

Downtown Station

SITE SELECTION / PUBLIC OUTREACH PLAN



January 2, 2024

Advancing the Strategic Plan



Connected City **outcome area**

Connectivity supports accessible, sustainable methods for safely moving people and information throughout the community and the region.

...and...

Investment in these assets reflects the City's commitment to contribute to the well-being of all people.

Investing in multimodal infrastructure is a **strategy** to improve the following **KPIs**:

- *CC-2: Resident satisfaction with transit experience*
- *CC-9: Cost per transit trip (ridership)*
- *CC-11: Percent of trips not taken in automobile*
- *CC-14: Infrastructure projects accounting for climate adaptation*



Advancing other City plans

Downtown Lawrence Plan



Adopted - August 10, 2021

  City of Lawrence
Downtown Lawrence Plan

Pages 159-160 of the City's long-range transportation plan, [Transportation 2050 \(T2050\)](#), list Downtown Station development to meet plan goals.

Pages 62-63 of the [Downtown Lawrence Plan](#) describe the need for Downtown Station improvements.

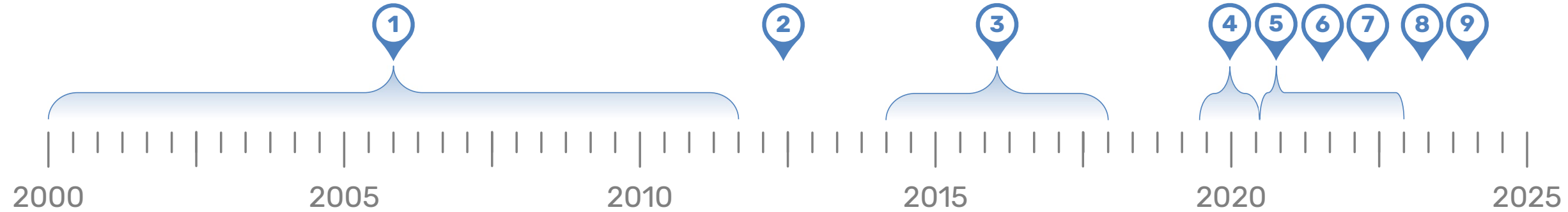


**Transportation
2050**

Lawrence-Douglas County
Metropolitan Transportation Plan



Brief History



2000 – 2012

Downtown transfers relocated 3 times due to construction, and evaluation of permanent location begins



2013

700 block of Vermont chosen as temporary Downtown transfer location until permanent site selected



2014 – 2018

2 site selection studies ([2014](#), [2018](#)), [TIGER grant application](#), City/KU discussion on Bob Billings/Crestline location



2019 – 2020

[City & KU finalize agreement](#) for Central Station on KU property at Bob Billings & Crestline



MAR 2021 – OCT 2022

[Route Redesign Study](#) indicates continued operational need for 5 routes to serve Downtown



AUG 2021

City Commission takes no action on proposed Downtown improvements, requests that staff evaluate other options



APR 2022

[City awarded \\$1.6M in federal grant funding](#) for Downtown transit improvements



AUG 2023 – OCT 2023

Transit presents draft site selection process at various Chamber and DLI meetings



JAN 2024

Transit presents draft site selection process to City Commission

Project Purpose

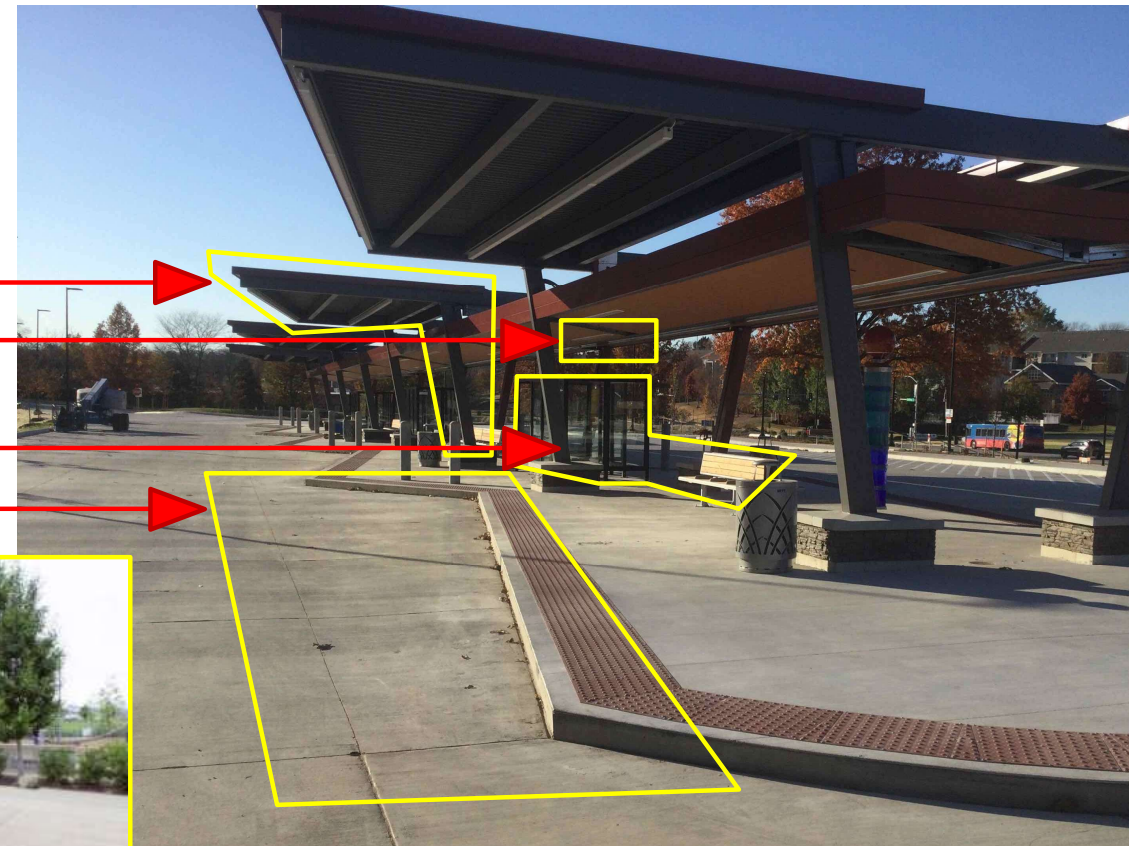
With or without improvements, 5 routes will continue to serve Downtown

Project aims to improve comfort & convenience to encourage more transit ridership today and in the future

Less significant improvements needed than Central Station

Today's platform lacks:

- Driver restrooms
- Individual bus bays
- Sufficient seating + wind protection
- Next departure signs
- Weather protection



Downtown Station



Downtown Business Comments

“ Perception that few people ride the bus. Is improving/expanding space for transit in Downtown worth the loss of space for something else? ”

Average of 561 daily boardings at 7th & Vermont in 2023



Rider suspension policy implemented in June 2023
Central Station code of conduct under development

“ Transit perceived as unsafe due to rider behaviors ”

“ Transit riders perceived to be less likely than people using other modes of transportation to live, work, or shop downtown. ”

2023 [interviews with transit riders](#) highlight wide variety of rider destinations, including downtown



Prior Work

- 2021 process relied on prior studies, did not clarify site selection guardrails
- Confusion about how candidate Downtown sites were identified
- Felt rushed



Downtown Station



Plan Forward

New approach intentionally brings community along through 3 phases to reach community-supported site

1

Establish Steering Committee. Define Downtown boundary, site selection criteria

2

Identify, solicit, evaluate all possible sites within boundary against criteria

3

Rank, select 3 sites for test concept, select 1 site for final design

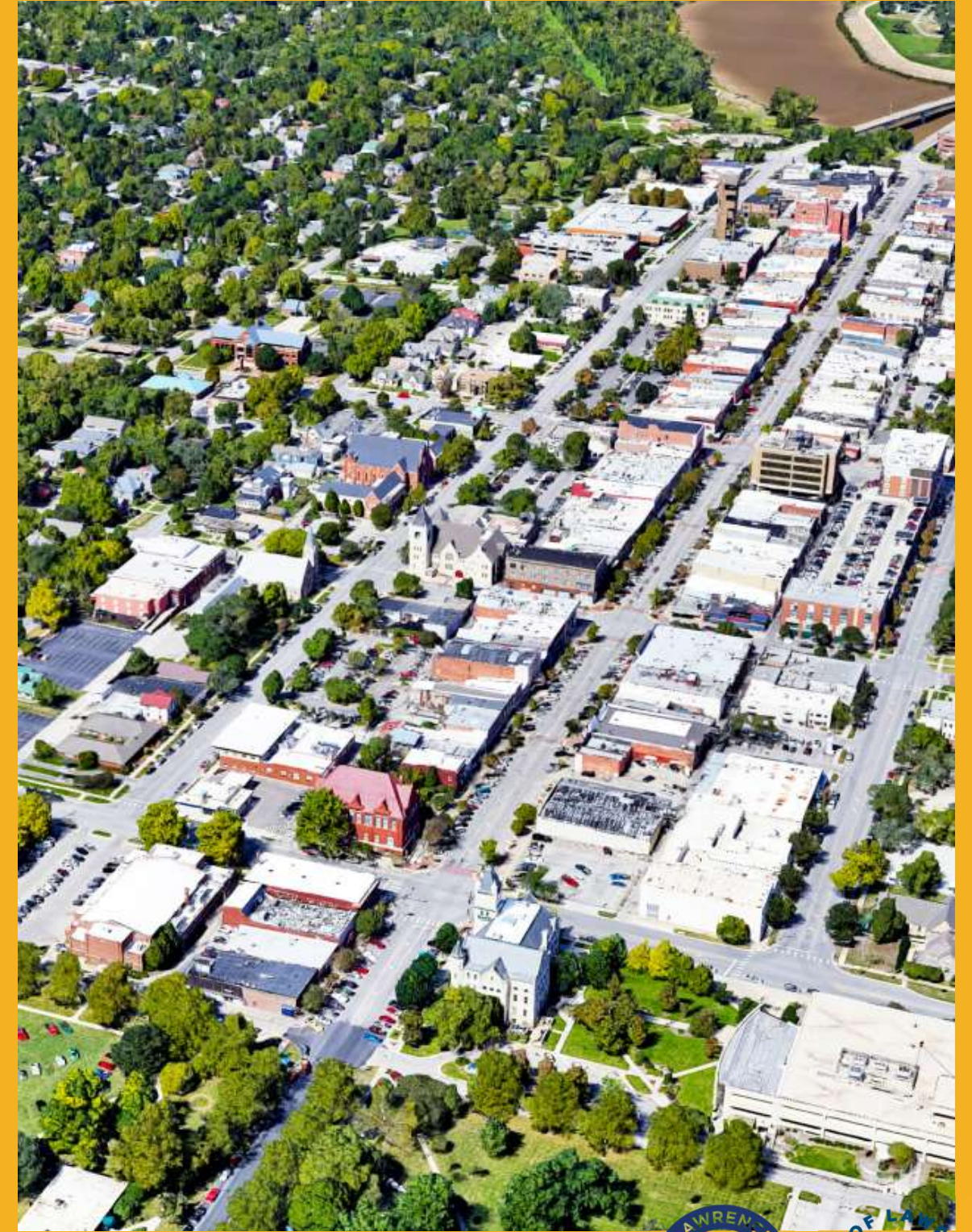


Downtown Station



Plan Forward, step 1

- Establish Steering Committee
- Define Downtown boundary
- Define site selection criteria

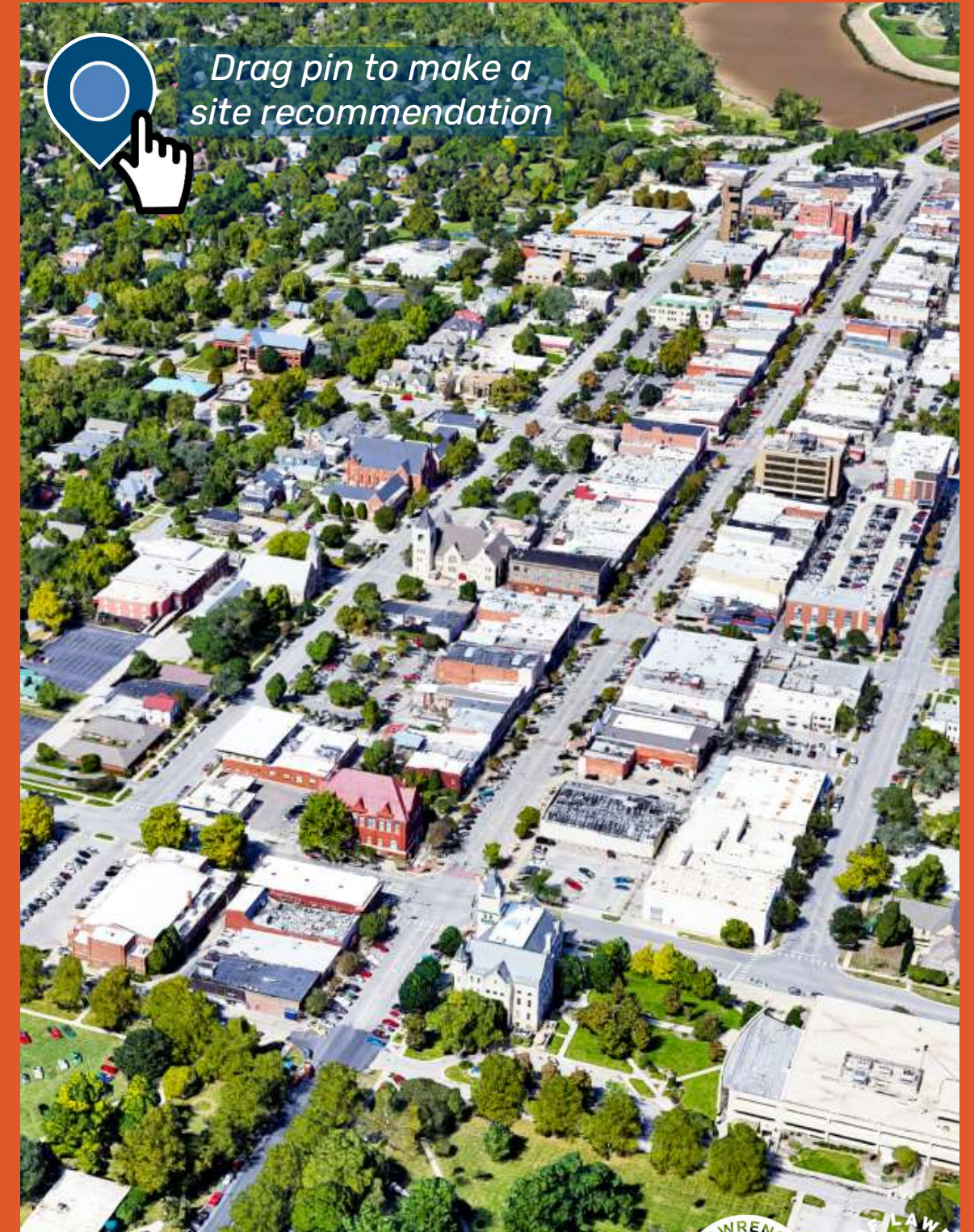


Downtown Station



Plan Forward, step 2

- Identify and solicit all possible sites within boundary from step 1
- Evaluate all sites against criteria from step 1



Downtown Station



Example

Plan Forward, step 3

- Rank all sites evaluated from step 2 and present for City Commission consideration
- City Commission selects 3 sites for concept design development
- 1 site selected for final design

- Site 1
- Site 2
- Site 3
- Site 4
- Site 5
- Site 6
- Site 7
- Site 8
- Site 9
- Site 10
- Site 11
- Site 12
- ...etc.

Viable sites
City Commission identifies 3 sites for concept design, ideally near top of ranked list

Downtown Station



Q1 2024

Establish Steering Committee. Draft Downtown boundary, site selection criteria, conduct public outreach, present to City Commission for vote/direction

Q2 2024

Draft initial list of candidate sites, conduct public outreach to solicit more sites within boundary

Q3-Q4 2024

Evaluate and rank all candidate sites, present full list to City Commission with recommended 3-5 sites to be selected for concept design

January/February 2025

Develop concept designs, present to City Commission with recommended site to move into final design

Timeline

Work session with City Commission 1/2/24

Appoint Steering Committee in January 2024

Site selection process in 2024 critical to 2025 design & construction

Downtown Station



Proposed outreach strategies

Balance of in-person/virtual, realistic for staff capacity.

Leverages IAP2 strategies for the **consult**, **involve**, and **collaborate** levels of public engagement.

- Definition of Downtown boundary
 - Establish steering committee | **collaborate**
 - 30 days of virtual map with comment feature | **consult**
 - Four 2-hr outreach tables at Downtown transfer area | **consult**
 - Two 2-hr outreach tables at Library entryway | **consult**
 - One 2-hr virtual meeting | **consult**
 - Present recommended boundary to City Commission & vote to approve
- Development of site selection criteria
 - 30 days of Lawrence Listens survey | **consult**
 - Four 2-hr outreach tables at Downtown transfer area | **consult**
 - Two 2-hr outreach tables at Library entryway | **consult**
 - One 2-hr virtual meeting | **consult**
 - Attend Downtown Lawrence, Inc. meeting to solicit input | **involve**
 - Attend Chamber meeting to solicit input | **involve**
 - Present recommended site selection criteria to City Commission & vote to approve
- Soliciting candidate sites for evaluation
 - 30 days of virtual map with comment feature | **consult**
 - Four 2-hr outreach tables at Downtown transfer area | **consult**
 - Two 2-hr outreach tables at Library entryway | **consult**
 - One 2-hr virtual meeting | **consult**
 - Attend Downtown Lawrence, Inc. meeting to solicit input | **involve**
 - Attend Chamber meeting to solicit input | **involve**
 - Present ranked list of all evaluated sites to City Commission & vote to develop concepts for 3 sites



Draft Steering Committee

9-11 members best for
effective working group

1 appointee from each organization below

Non-voting Chair – City Commission appointee

The Chamber

Downtown Lawrence, Inc.

Lawrence Public Library

Senior Resource Center

First Transit bus driver

Lawrence Association of Neighborhoods (LAN)

Public Transit Advisory Committee

Bus rider – First Transit/City Transit staff appointee

Downtown resident – City Commission appointee

Downtown employee – City Commission appointee

General public – City Commission appointee

*City Commission resolution to
establish steering committee in
Jan 2024*



Additional Stakeholders

- Sustainability advocacy groups
- Transportation advisory groups
- Equity advocacy groups
- KU and Haskell representatives
- Lawrence Public Schools
- Lawrence Community Shelter
- Douglas County Human Services Coalition
- Douglas County Health Dept
- KDOT
- FTA Region VII
- Other City staff departments



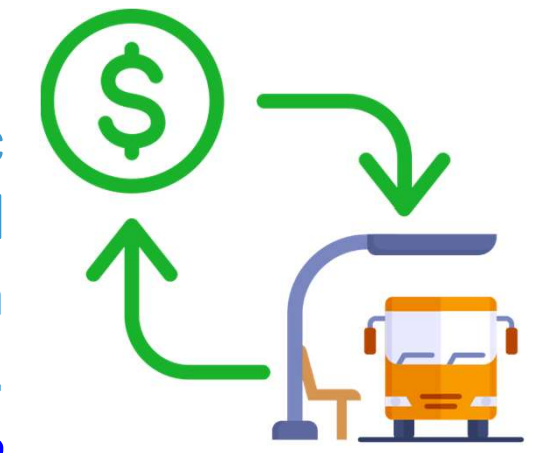
Why this work matters

The Lawrence community **supports** high quality transit service



Sustainability and density goals cannot be achieved without more **shared-ride** transportation

According to the American Public Transit Association, every **\$1 invested** in public transit **generates \$5** in economic returns.



[Source](#)





City Commission Questions

Feedback on draft steering committee scope of work?

Feedback on draft steering committee membership? Any important voices we are missing?





Thank You

