

September 2024



CITY OF LAWRENCE  
UNIVERSITY OF KANSAS



**Downtown Station – Step 3**  
*Final Steering Committee*  
*recommendations*

# Table of Contents

Table of Contents..... 2  
Background..... 3  
Executive Summary..... 3  
Appendix A: Written input received prior to 9/23..... 10  
Appendix B: 9/23 Steering Committee video recording..... 10

# Background

The Steering Committee scope for the site selection process for Downtown Station contains 3 steps:

1. Establish a downtown boundary: Completed in June 2024
  - a. Public engagement results | [Map](#), [Comments](#), [Final Boundary](#)
2. Establish site selection criteria: Completed in August 2024
  - a. Public engagement results | [Report](#), [Final Criteria](#)
3. Recommend 3-5 sites for concept design: Completed in September 2024
  - a. Public engagement results | [Map](#), [Comments](#)
  - b. [Initial committee ranking](#), [revised committee ranking](#)

# Executive Summary

The Steering Committee continued discussion of 14 viable sites at its 9/23/24 meeting. Public comment received between the Committee’s 8/19 and 9/23 meeting was primarily from residents in neighborhoods near downtown that voiced concerns about site options adjacent to residential properties.

The Steering Committee received substantial written public comment to evaluate prior to the 9/23 meeting and accepted additional verbal public comment at the 9/23 meeting. Following this input, the Steering Committee focused their discussion around 6 sites that have not yet received strong oppositional comments from the public:

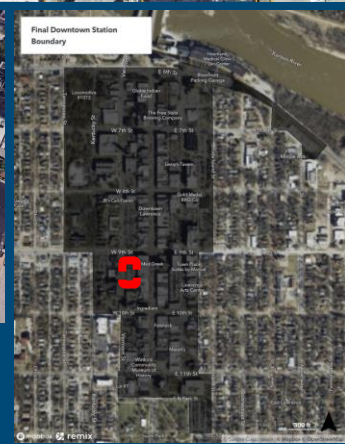
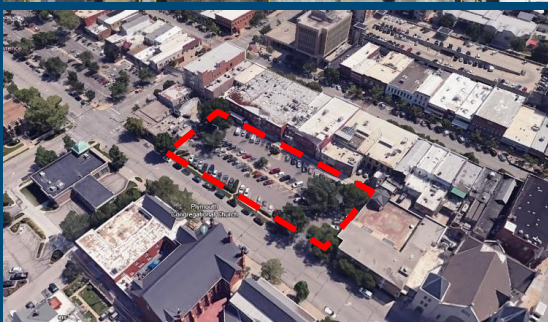
005 – City parking lot #5 (east side of 900 block of Vermont St.)	025 – City parking lot #8 (east side of 800 block of New Hampshire St.)
006 – City parking lot #9 (west side of 900 block of Vermont St.)	026 – City parking lot #4 (west side of 800 block of New Hampshire St.)
018 – Current bus transfer area, 700 block of Vermont St.	028 – City parking lot #7 (west side of Community Building)

Additional discussion about lack of parking options for Community Building users if site 028 was selected led to its removal, resulting in the final site recommendations from the Steering Committee:

005 – City parking lot #5 (east side of 900 block of Vermont St.)	025 – City parking lot #8 (east side of 800 block of New Hampshire St.)
006 – City parking lot #9 (west side of 900 block of Vermont St.)	026 – City parking lot #4 (west side of 800 block of New Hampshire St.)
018 – Current bus transfer area, 700 block of Vermont St.	

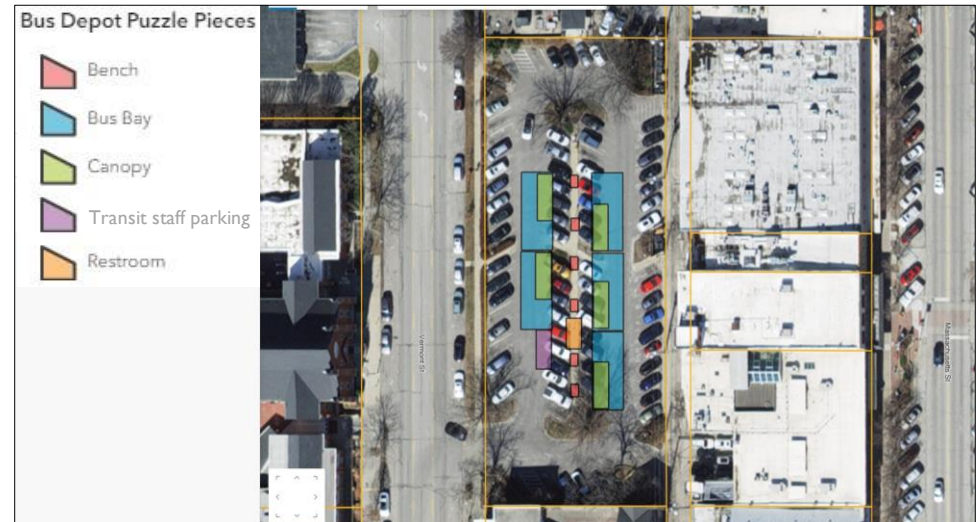
These 5 sites are not ranked in a specific order and are recommended to have updated concept plans and cost estimates developed so that the City Commission can provide guidance on a preferred final site.

# 005: City parking Lot #5 (east side of 900 block of Vermont St.)

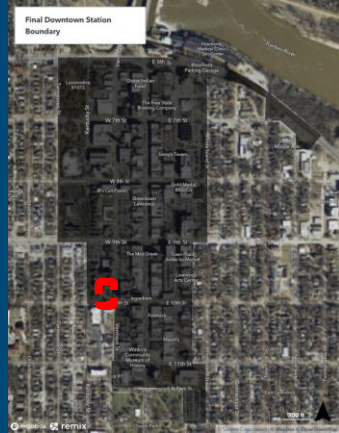
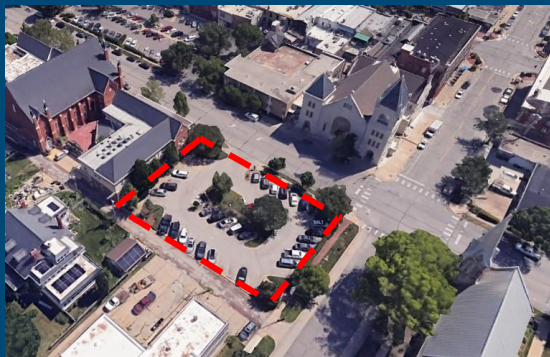


Biggest opportunities	Biggest concerns
Steering Committee comments	
<ul style="list-style-type: none"> <li>Convenient location - would be great for rider access to downtown</li> </ul>	<ul style="list-style-type: none"> <li>Well-used parking lot that serves a lot of businesses and the churches.</li> <li>Potentially difficult for bus access into and out of parking lot?</li> <li>Coming from the North and West could be really tricky with traffic.</li> </ul>
Staff comments	
<ul style="list-style-type: none"> <li>Central location</li> </ul>	<ul style="list-style-type: none"> <li>Concern about community support to repurpose well-used parking lot</li> </ul>

## Pre-concept site layout

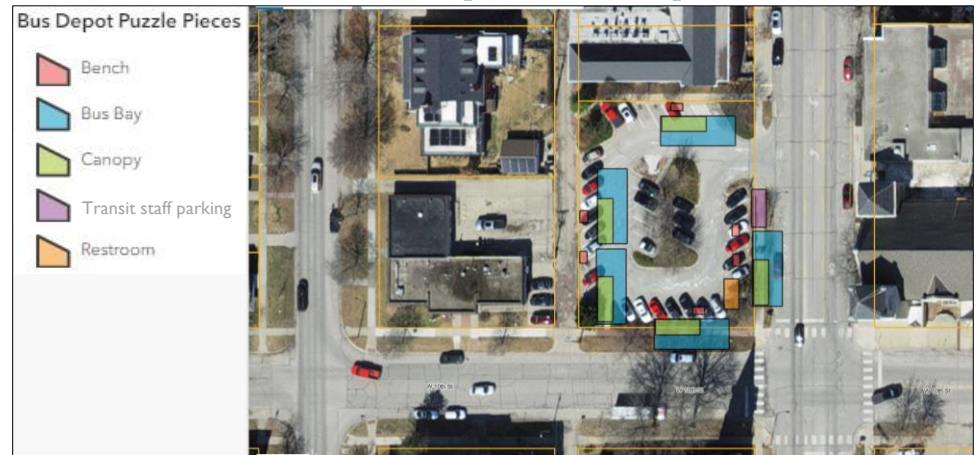


# 006: City parking Lot #9 (west side of 900 block of Vermont St.)

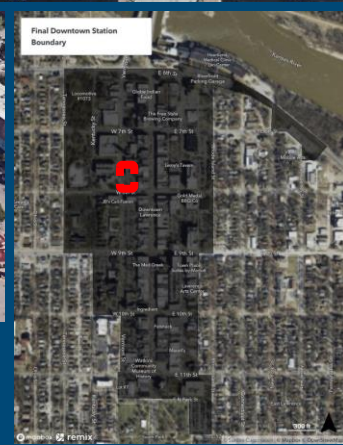
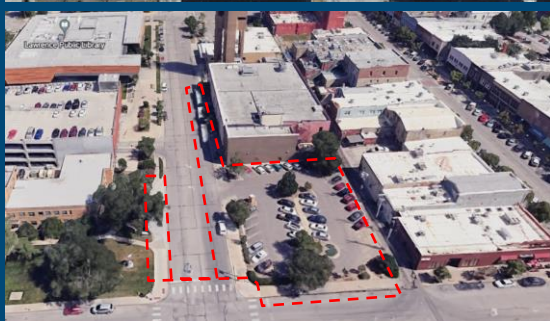
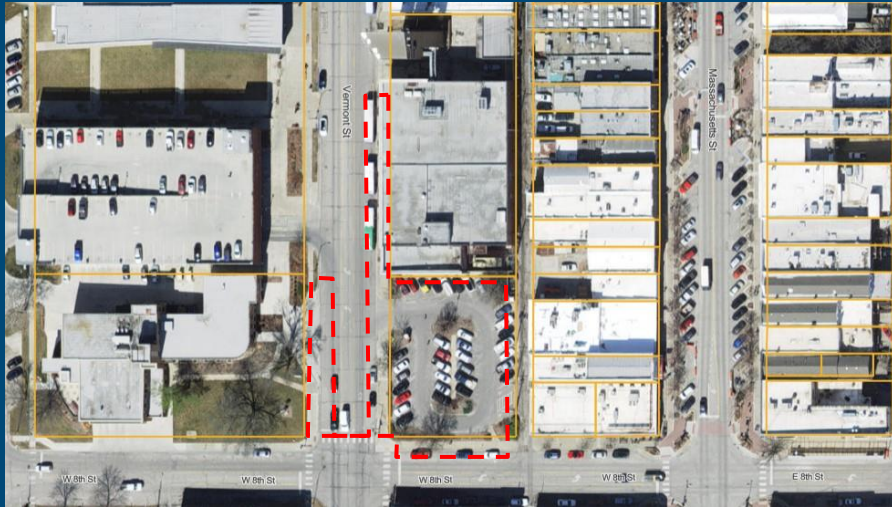


Biggest opportunities	Biggest concerns
Steering Committee comments	
<ul style="list-style-type: none"> <li>• Might actually benefit to consolidate some of the "activity" which occurs, thus making it easier to patrol?</li> <li>• Not a bad choice considering its proximity to 9th and Mass</li> </ul>	<ul style="list-style-type: none"> <li>• May be too small of a site</li> <li>• Parking serves the churches</li> <li>• Its proximity to churches, an outdoor encampment, and to the homeless resource center makes it a chaotic and unpleasant block to traverse for women on foot—especially at night.</li> <li>• Fire hydrant will be in way of proposed bay, workarounds please?</li> </ul>
Staff comments	
<ul style="list-style-type: none"> <li>• Smaller parking lot reduces parking impact compared to other sites</li> </ul>	<ul style="list-style-type: none"> <li>• The small site means that design options are limited</li> <li>• Concern about community support to repurpose well-used parking lot</li> </ul>

## Pre-concept site layout



# 018: Current bus transfer area, 700 block of Vermont St.



Biggest opportunities	Biggest concerns
Steering Committee comments	
<ul style="list-style-type: none"> <li>I would be in favor of enhancing the existing site if proper crosswalks were created so folks have easier access walking back and forth between the buses and the library.</li> </ul>	<ul style="list-style-type: none"> <li>Too much foot traffic in an area not designed for foot traffic.</li> <li>Speeding cars in the area</li> <li>Mixed traffic flow (cars/people/buses) is difficult with buses stopping on both sides of road</li> <li>Maintaining through-access for cars / access to the parking garage on the eastern side seems challenging</li> </ul>
Staff comments	
<ul style="list-style-type: none"> <li>Smaller parking lot reduces parking impact compared to other sites</li> </ul>	<ul style="list-style-type: none"> <li>Traffic patterns and pedestrian crossing challenges coupled with the strange site size/shape could create design challenges</li> </ul>

## Pre-concept site layout



## 025: City parking Lot #8 (east side of 800 block of New Hampshire St.)



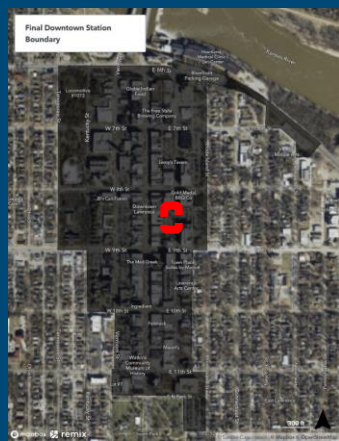
Biggest opportunities	Biggest concerns
Steering Committee comments	
<ul style="list-style-type: none"> <li>• One of my top choices because it seems just like a reasonable location. No big "cons" IMO.</li> <li>• Conveniently located to the most end-point destinations on and around Mass Street.</li> </ul>	<ul style="list-style-type: none"> <li>• Concerned about disrupting the Farmer's Market</li> <li>• A pretty area. Left (south) turns could be tricky but we could route us all right turn only if necessary.</li> </ul>
Staff comments	
<ul style="list-style-type: none"> <li>• Central location</li> </ul>	<ul style="list-style-type: none"> <li>• Concern about community support to repurpose well-used parking lot and displace Farmer's Market</li> <li>• Concern about spillover impact into neighborhoods, parking currently used by apartment residents</li> </ul>

## Pre-concept site layout



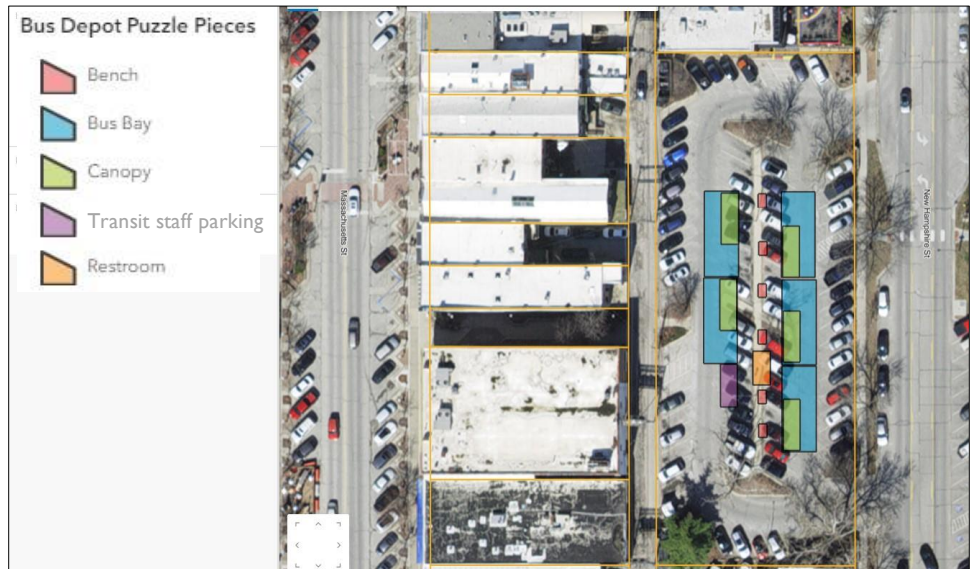


# 026: City parking Lot #4 (west side of 800 block of New Hampshire St.)



Biggest opportunities	Biggest concerns
Steering Committee comments	
<ul style="list-style-type: none"> <li>As a rider, this site would be really convenient to the most end-point destinations on and around Mass Street.</li> <li>Area has cool art, cool character</li> <li>Existing crosswalk on New Hampshire</li> </ul>	<ul style="list-style-type: none"> <li>Well-used parking, drivers could be frustrated to lose. Is there political will?</li> <li>Impact on Farmer's Market pedestrians.</li> </ul>
Staff comments	
<ul style="list-style-type: none"> <li>Central location</li> </ul>	<ul style="list-style-type: none"> <li>Concern about community support to repurpose well-used parking lot</li> </ul>

## Pre-concept site layout



# Appendix A: Written input received prior to 9/23

- [Public comment\\_8.22.24](#)
- [Public comment\\_9.13.24](#)
- [Public comment\\_9.14.24](#)
- [Public comment\\_9.19.24](#)
- [Public comment\\_9.20.24](#)
- [Public comment\\_9.22.24](#)
- [Public comment\\_9.22.24\\_2](#)
- [Public comment\\_9.22.24\\_3](#)
- [Public comment\\_9.22.24\\_4](#)
- [Public comment\\_9.22.24\\_5](#)
- [Public comment\\_9.22.24\\_6](#)
- [Public comment\\_9.22.24\\_7](#)
- [Public comment\\_9.22.24\\_8](#)
- [Public comment\\_9.22.24\\_9](#)
- [Public comment\\_9.23.24](#)
- [Public comment\\_9.23\\_2.24](#)
- [Public comment\\_9.23\\_3.24](#)

# Appendix B: 9/23 Steering Committee video recording

Video recording: <https://www.youtube.com/watch?v=BdbjbobrOf4>