

LAWRENCE - DOUGLAS COUNTY

MPO



METROPOLITAN PLANNING ORGANIZATION

# Transportation 2040

Lawrence-Douglas County  
Comprehensive Plan Update  
Steering Committee  
August 11, 2014



# A Metropolitan Planning Organization...

- Is a federally required group that conducts a regional transportation planning process and programs federal transportation funding
- Is a representative group of local stakeholders
- Leads the transportation planning process for the metropolitan planning area (all of Douglas County)
- Is one of the region's policymaking organizations responsible for prioritizing transportation projects
- Carries out the required metropolitan transportation planning process in cooperation with KDOT and local transit operators

# MPO structure

- An MPO is required to have a decision-making “policy body”
- The structure of this MPO is:
  - Policy Board
  - Technical Advisory Committee
  - Regional Transit Advisory Committee
  - Other Committees formed to assist with certain types of planning and/or large projects (e.g., Bicycle Advisory Committee and the T2040 Advisory Committee)
  - MPO Secretary/Planning Director, Senior Transportation Planner, and Transportation Planner

# What is transportation?

**Transportation is**  
different modes,  
working as a system,  
for the safe, efficient movement  
of people and goods.

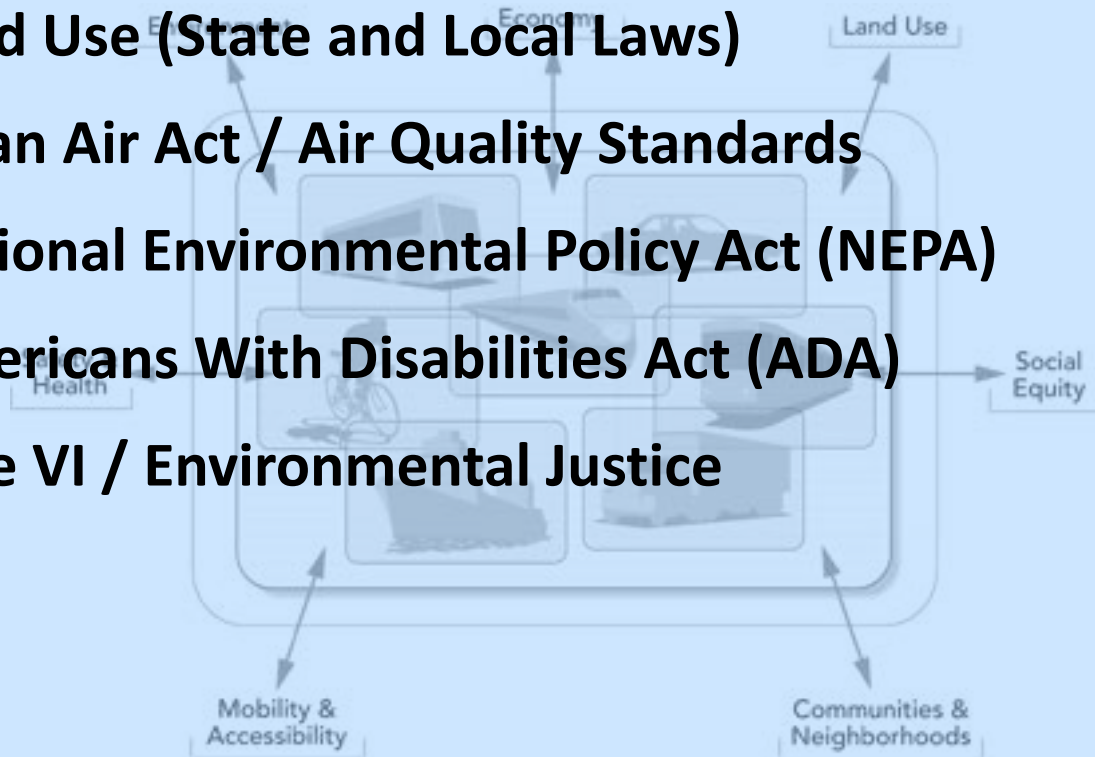
# What is transportation planning?

**Transportation planning provides**  
the information, tools, and public  
involvement needed for improving  
transportation system performance.

**Transportation planning is**  
a continuous process that requires monitoring  
of the system's performance and condition.

# Transportation Planning is about more than transportation

- Land Use (State and Local Laws)
- Clean Air Act / Air Quality Standards
- National Environmental Policy Act (NEPA)
- Americans With Disabilities Act (ADA)
- Title VI / Environmental Justice



It is Comprehensive.

# What is Transportation 2040 (T2040)?

- Blueprint for our future transportation system
- A vision for a healthy, safe, and efficient transportation system
- Serves the urbanized region that includes the City of Lawrence and all of Douglas County
- Updates and replaces *Transportation 2030 (T2030)*
- Federally required under SAFETEA-LU and MAP-21

# Goal 1: Improve Safety & Security

- **Objective 1.1:** Reduce the occurrences of fatalities and injuries to transportation system users through design techniques and the application of the “4 E’s” -- engineering, education, enforcement, and emergency response
- **Objective 1.2:** Coordinate with local, state and federal agencies and transportation providers to respond during times of natural disasters, extreme accidents, or other emergencies
- **Objective 1.3:** Increase the ability of the transportation system to support homeland security and to safeguard the personal security of all motorized users, non-motorized system users, and vital transportation facilities

# Goal 2: Focus on System Preservation & Economic Efficiency

- **Objective 2.1:** Maximize the useful life of the streets, highways, bridges, and related transportation structures
- **Objective 2.2:** Utilize management techniques and technologies to maximize the capacity of the network and improve the operational efficiencies of the transport system
- **Objective 2.3:** Incorporate and coordinate transportation improvements with existing and planned future land uses to minimize infrastructure costs
- **Objective 2.4:** Efficiently utilize existing financial resources to reduce duplication of services and/or other inefficiencies and investigate potential new revenue sources

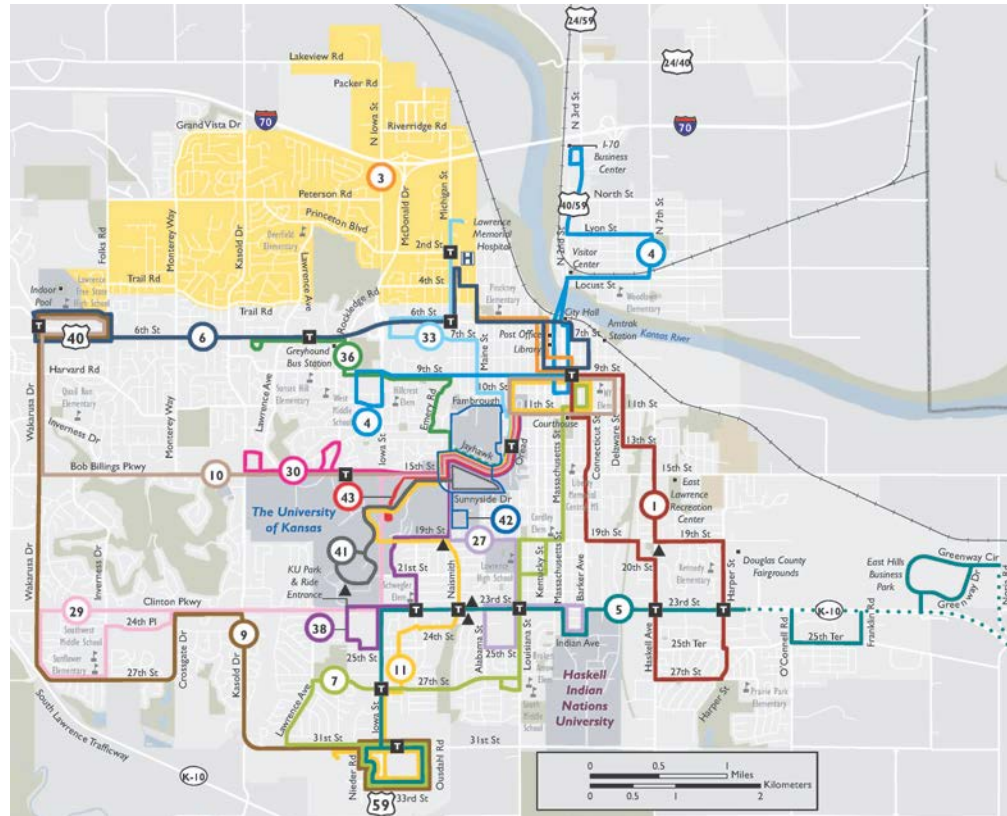
# Goal 3: Maximize Accessibility & Mobility

- **Objective 3.1:** Minimize delay and congestion to improve travel times through identifying and upgrading traffic signal technology and communications to improve traffic flow.
- **Objective 3.2:** Provide viable transportation alternatives (transit, bicycle, pedestrian) with better interconnectivity for people and goods by considering transit, bikeway and pedestrian facility details in all new development site planning, and adhering to local Complete Streets policies.
- **Objective 3.3:** Assure all users are provided access to the regional transportation system and planning process

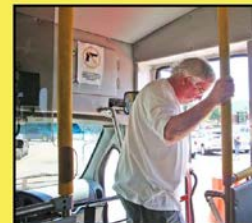
# Goal 4: Consider the Environment & Quality of Life

- **Objective 4.1:** Minimize adverse social, economic, and environmental impacts created by the transportation system
- **Objective 4.2:** Consider transportation impacts when making land use decisions, and consider land use impacts (in terms of land use patterns, densities, and designated uses) when making transportation-related decisions

# Transit



## COORDINATED PUBLIC TRANSIT- HUMAN SERVICES TRANSPORTATION PLAN FOR DOUGLAS COUNTY, KANSAS



Prepared for the Lawrence-Douglas County Metropolitan Planning Organization  
by the Lawrence-Douglas County Planning & Development Services Department

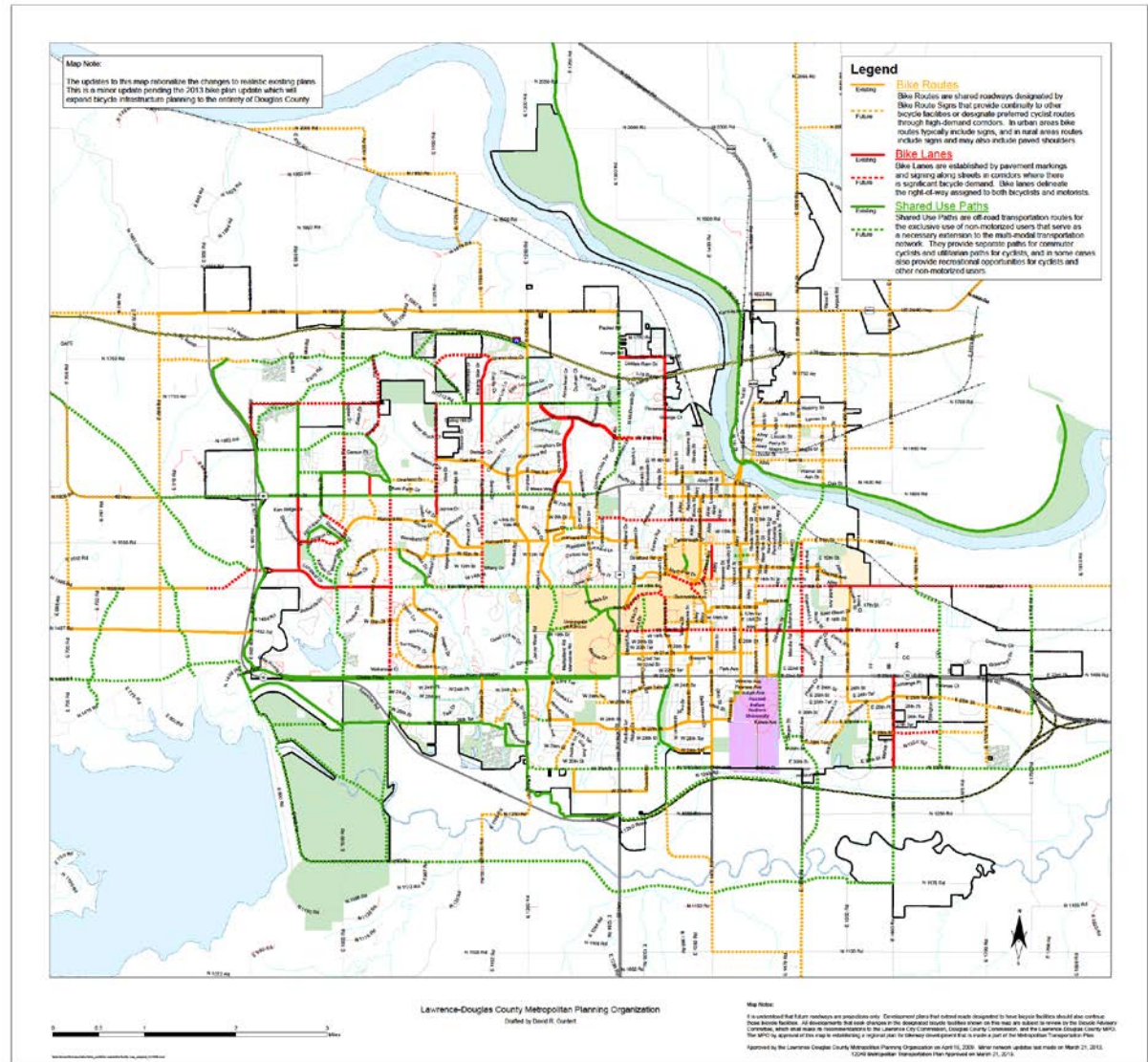
Approved by the L-DC MPO on February 16, 2012

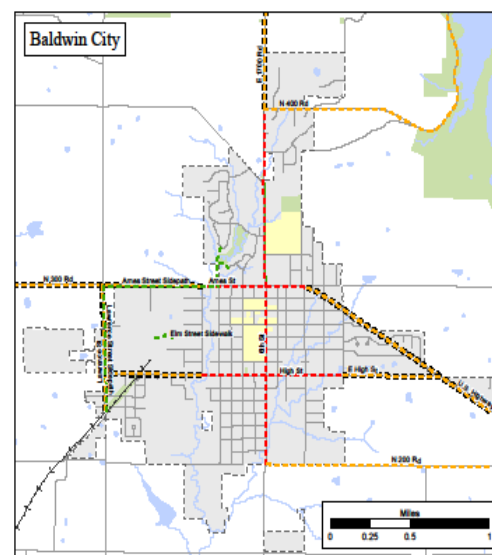
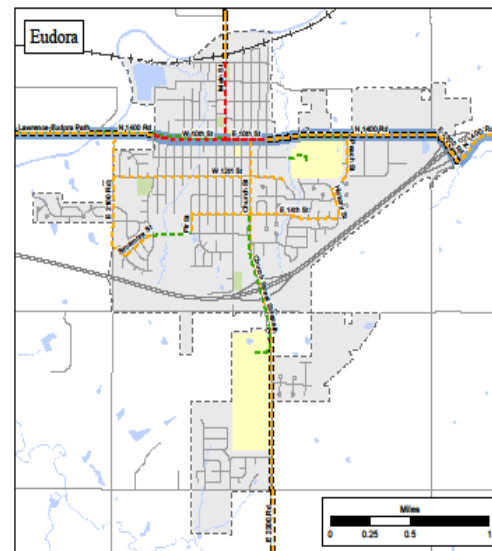
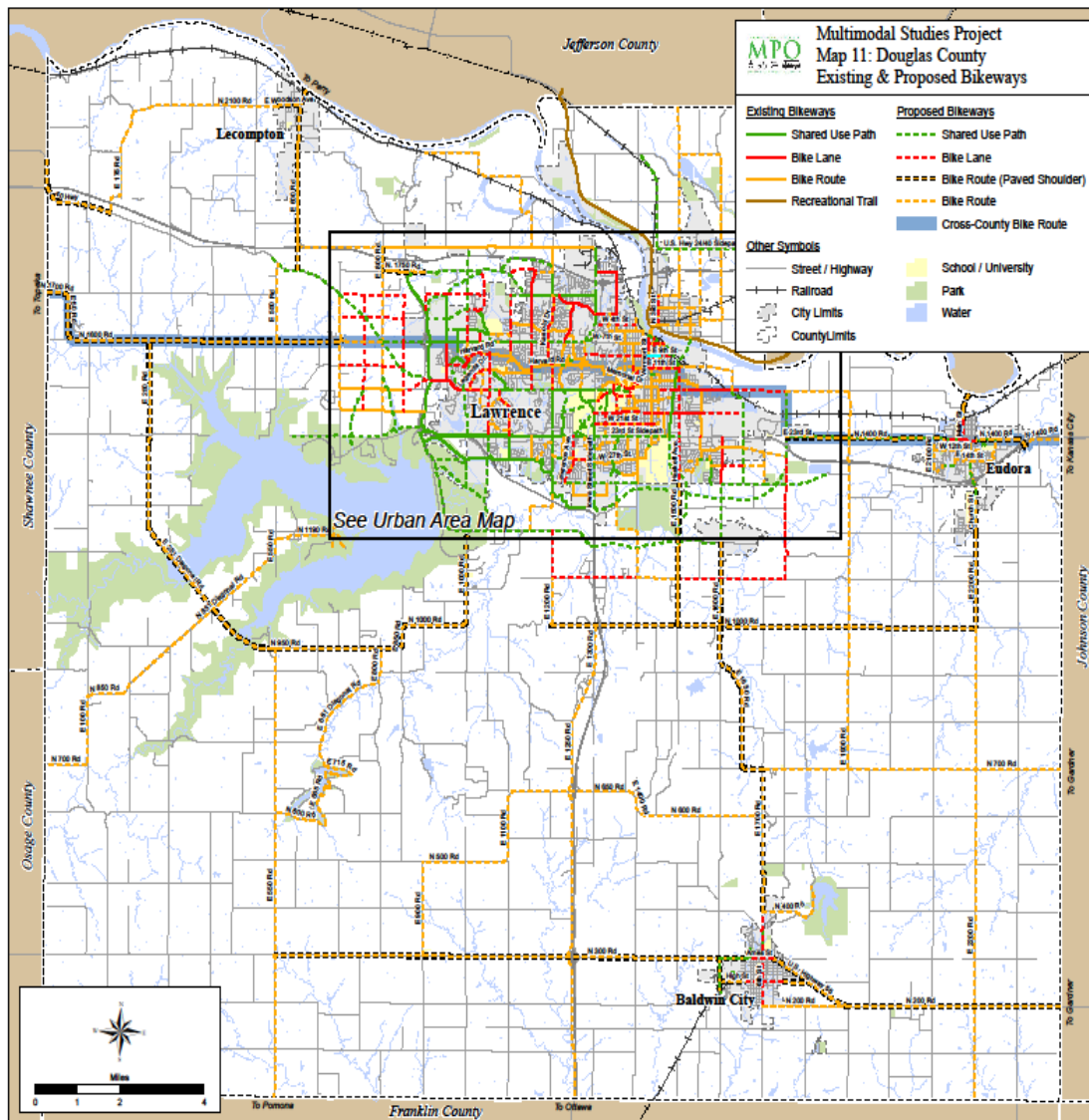


# T2040 Bikeway System Map



T2040 Bikeway System Map

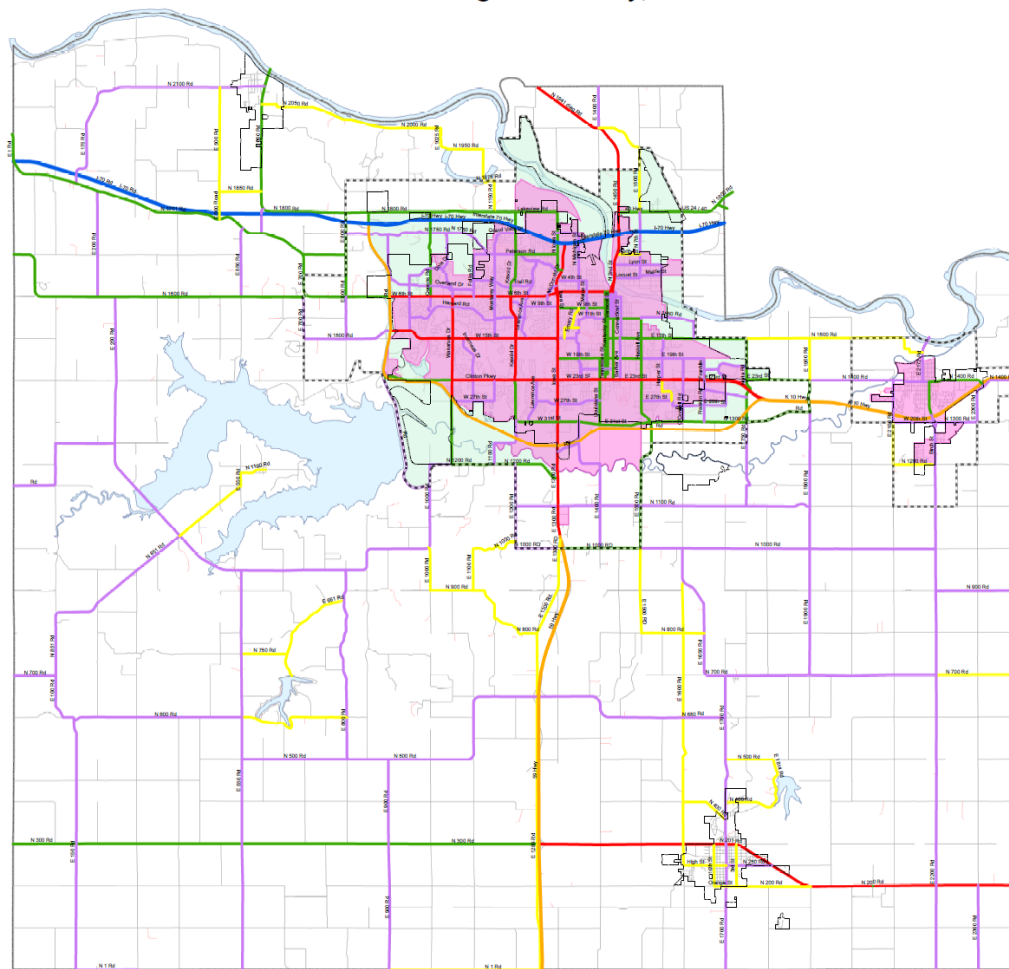




Data provided by the Lawrence - Douglas County MPO and the U.S. Census Bureau. This map is provided "as-is" for informational purposes and no guarantee is made as to the accuracy of the map or data. Plot date 12/05/2013.

# MPO-FHWA-KDOT Roadway Functional Classification Map

## 2013 MPO-KDOT-FHWA Roadway Functional Classification Map Lawrence-Douglas County, Kansas



Proposed Lawrence & Eudora FHWA  
Urban Area Boundaries 2012 Update  
Lawrence Urbanized Area and  
Eudora Urban Place - Census 2010  
Lawrence FHWA Urban Area Boundary - 2003

Notes: The Lawrence Urbanized Area and Eudora Urban Area Boundaries are determined by the U. S. Census Bureau and used for selected Federal funding allocation and land use planning purposes.

The Lawrence and Eudora Urban Area Boundaries are determined cooperatively by the Lawrence-Douglas County MPO, KDOT and FHWA. They are used for MPO level regional transportation planning and roadway functional classification purposes.

2 1 0 2 Miles

Map prepared by Lawrence-Douglas County Planning and Development  
Services Department for the Lawrence-Douglas County MPO  
March 21, 2013 - MPO Approved

### Urban Area Totals

#### Roadway Functional Classifications:

Interstates (7.9 miles - 1.3% of total UA road miles)  
Other Freeways & Expressways (21.3 miles - 4.1% of total UA road miles)  
Other Principal Arterials (35.4 miles - 6.7% of total UA road miles)  
Minor Arterials (59.5 miles - 11.2% of total UA road miles)  
Major Collectors (87.7 miles - 16.6% of total UA road miles)  
Minor Collectors (7.6 miles - 1.3% of total UA road miles)  
Local (269.6 miles - 50.9% of total UA road miles)  
Total public centerline road miles in Urban Area is 528.6 miles.

### Rural Area Totals

#### Roadway Functional Classifications:

Interstates (8.2 miles - 1.1% of total RA road miles)  
Other Freeways & Expressways (16.5 miles - 2.0% of total RA road miles)  
Other Principal Arterials (14.7 miles - 1.8% of total RA road miles)  
Minor Arterials (23.2 miles - 2.9% of total RA road miles)  
Major Collectors (138.7 miles - 16.8% of total RA road miles)  
Minor Collectors (8.9 miles - 1.1% of total RA road miles)  
Local (544.2 miles - 67.1% of total RA road miles)  
Total public centerline road miles in Rural Area is 836.1 miles.

### Regional Totals

#### Roadway Functional Classifications:

Interstates (17.1 miles - 1.2% of total road miles)  
Other Freeways & Expressways (38.0 miles - 2.8% of total road miles)  
Other Principal Arterials (50.1 miles - 3.7% of total road miles)  
Minor Arterials (102.7 miles - 7.5% of total road miles)  
Major Collectors (226.4 miles - 16.6% of total road miles)  
Minor Collectors (76.6 miles - 5.6% of total road miles)  
Local (853.8 miles - 62.6% of total road miles)  
The total public centerline road miles in Douglas County is 1,364.7 miles.



LAWRENCE - DOUGLAS COUNTY

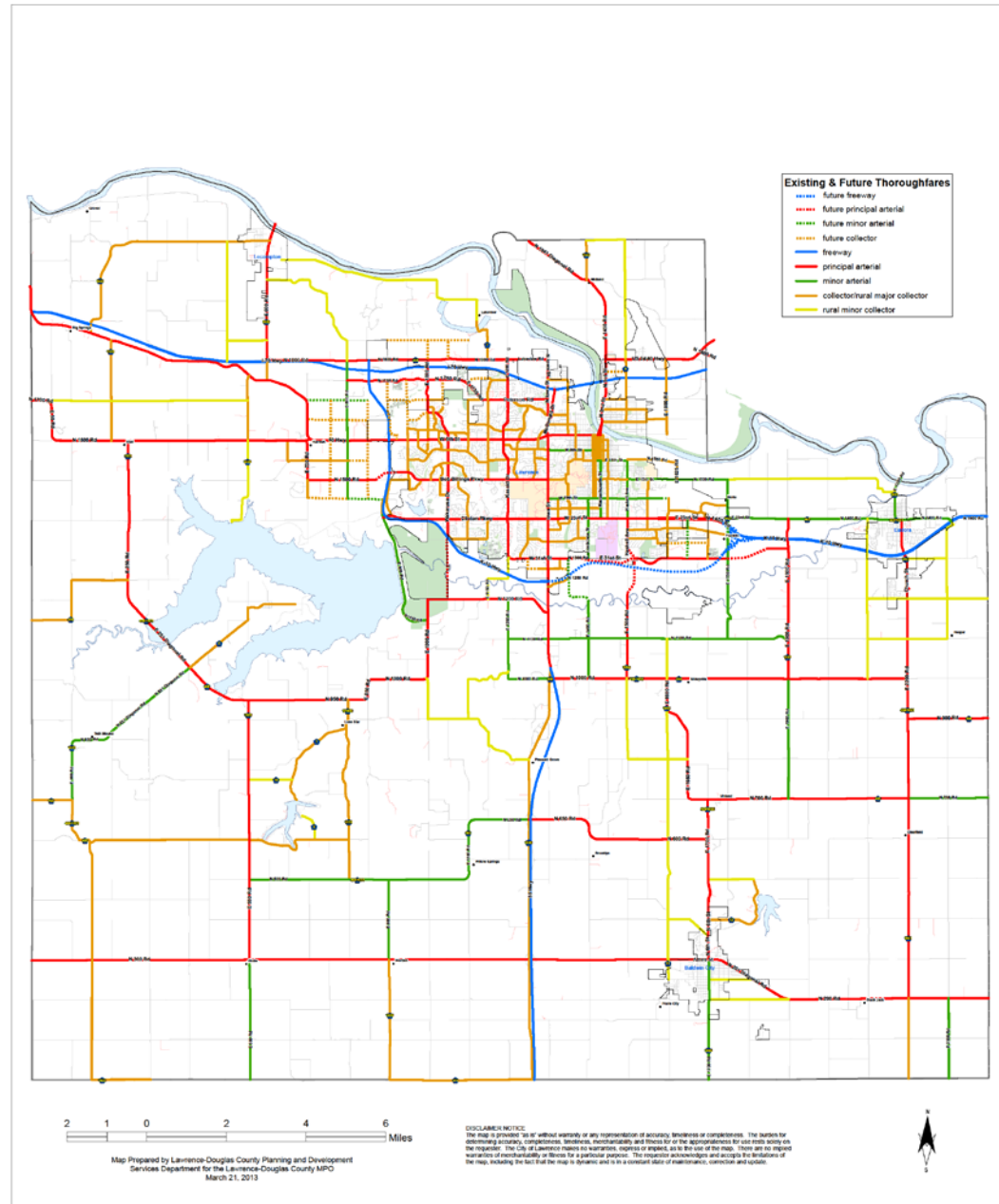
MPO



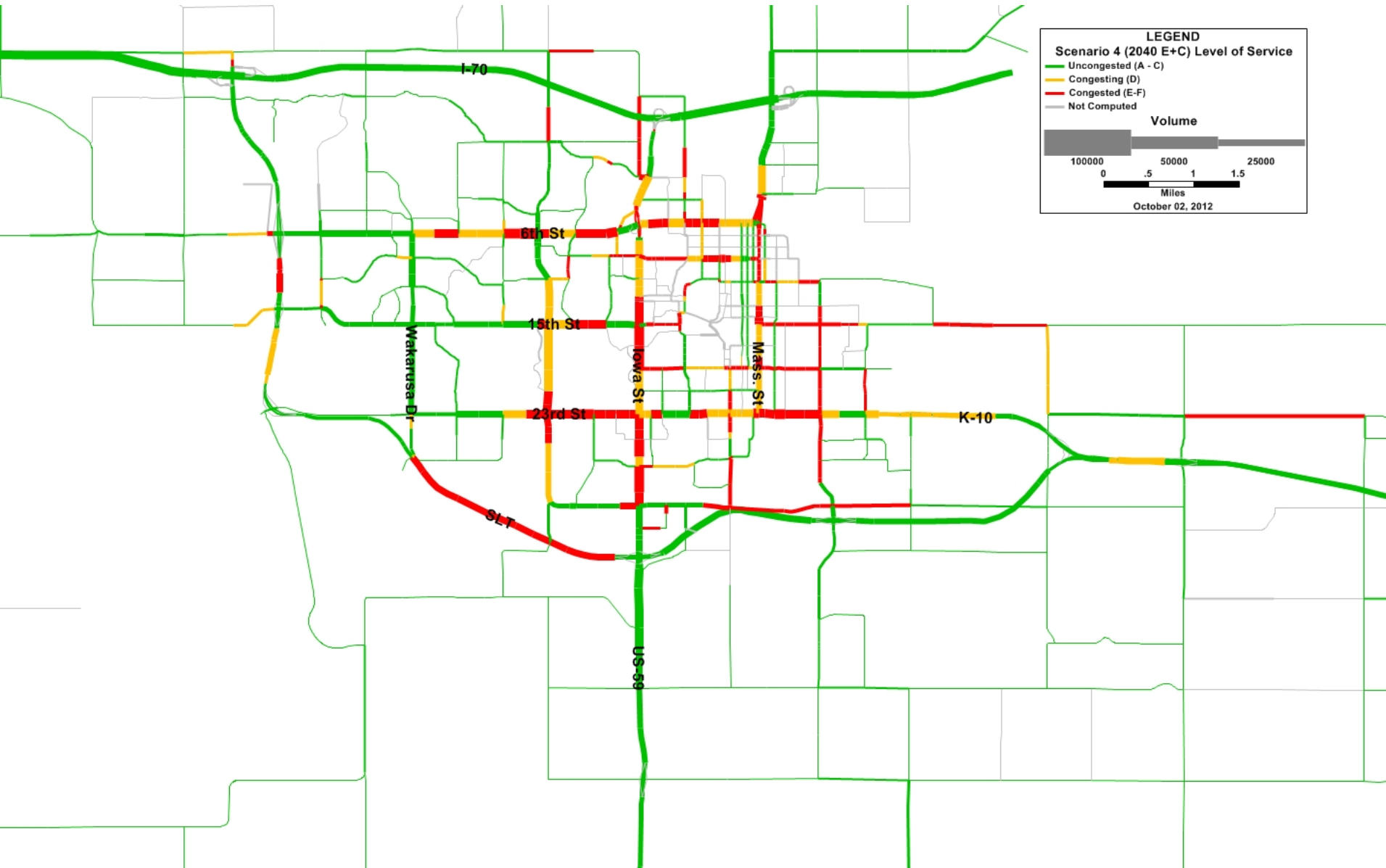
METROPOLITAN PLANNING ORGANIZATION

# Major Thoroughfares Map

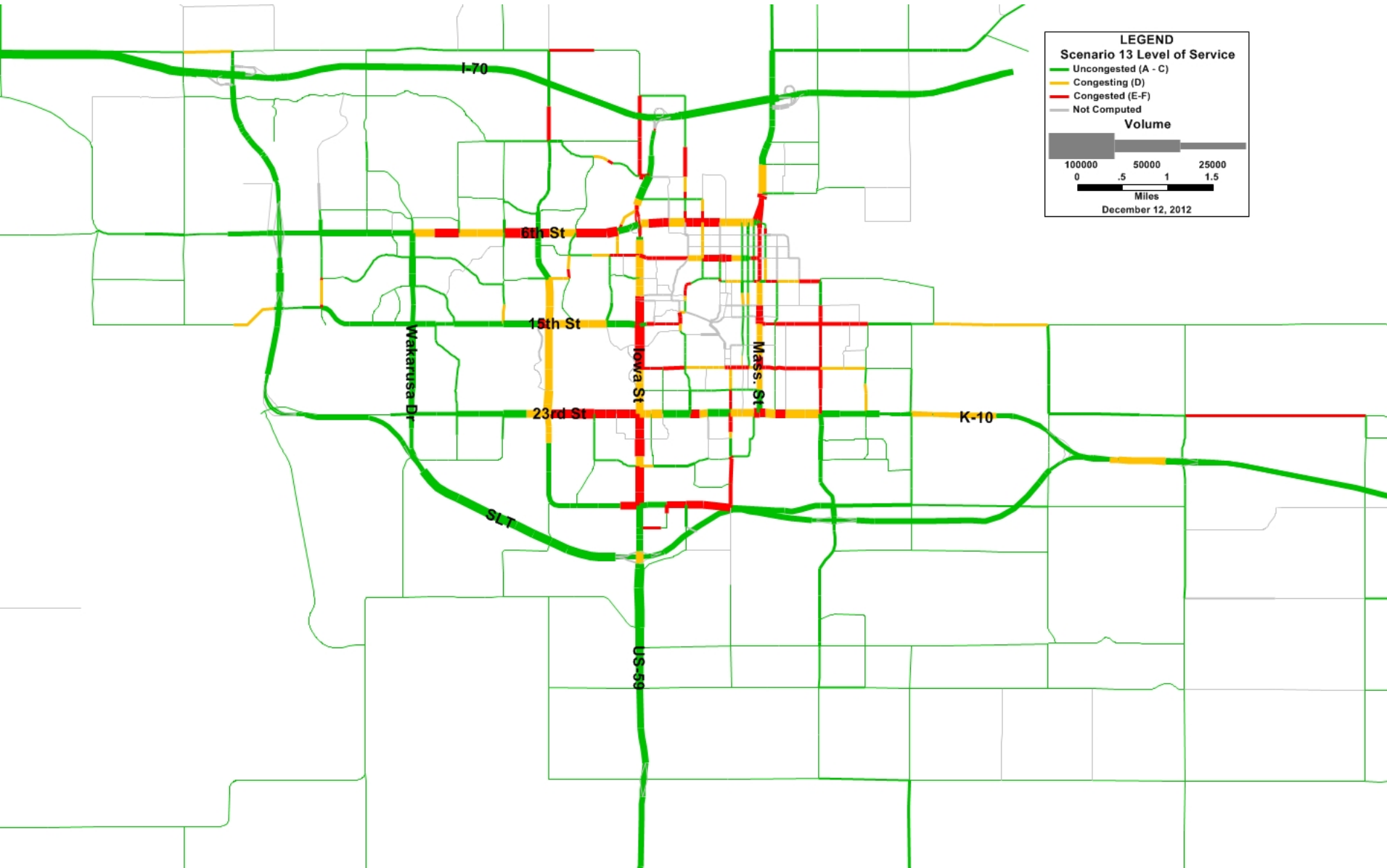
## T2040 Major Thoroughfares Map, Douglas County, Kansas



# Scenario 4 – 2040 E+C V/C



# Scenario 13 – All Updates V/C

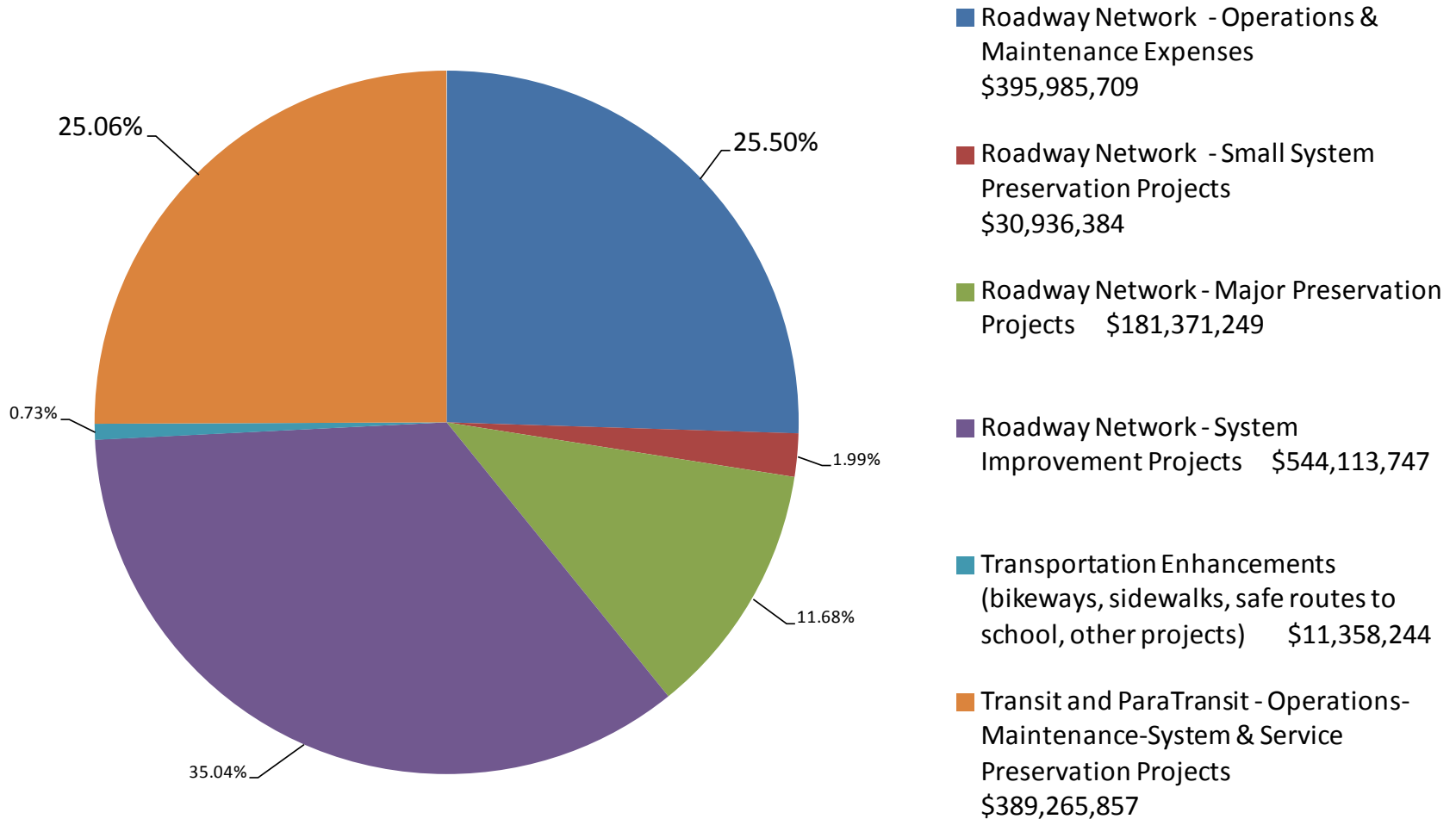


# What is “fiscal constraint”?

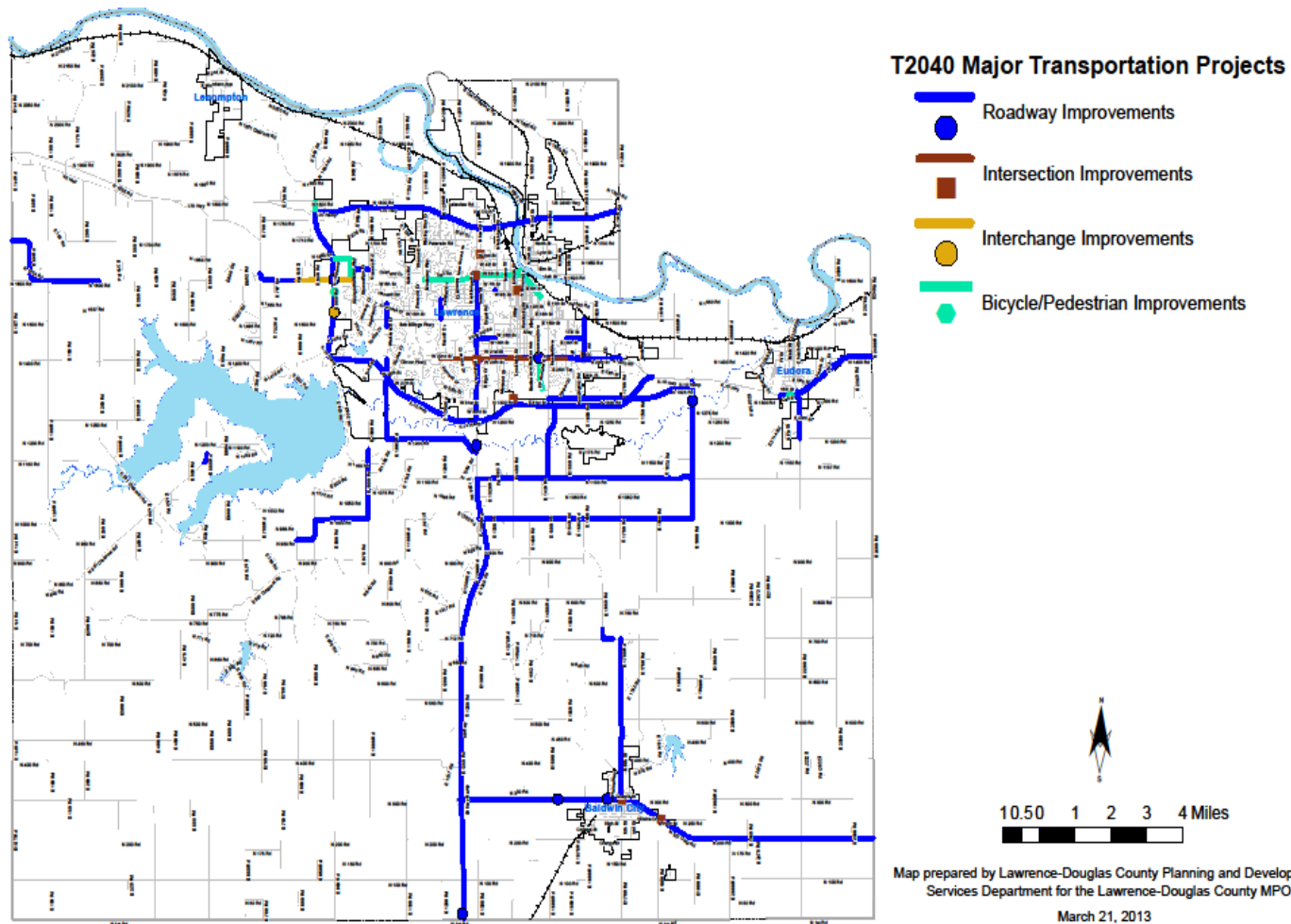
The cost of transportation system  
improvement projects  
must not exceed the level  
of reasonably available revenue.

Ensures realistic plans and programs for transportation systems

# Total Transportation System Funding for the 2012-2040 Period by Funding Type - \$1,553,031,190



## T2040 Projects Location Map - Douglas County, Kansas



# Approval Timeline

- MPO Policy Board Meeting
  - T2040 Approval– March 21, 2013
- MPO Policy Board Meeting
  - T2040 Amendment #1- August 15, 2013
- Board of County Commissioners
  - T2040 approval as part of Comp Plan on September 25, 2013
- City Commission
  - T2040 approval as part of Comp Plan on October 8, 2013

# The 5 E's of Transportation Planning

- **Engineering** - how we build things
- **Education** - how we learn how to use things
- **Encouragement** – how we try new options
- **Enforcement** – how we keep safe using things
- **Evaluation** – how we learn how to improve things

# Existing Street – Arterial



# Complete Street – Arterial



# Big Ideas - Takeaways

## ➤ Connectivity

- All Modes and Multimodal System Building

## ➤ Complete Streets

- Facility Construction and Design Standards for Everyone

## ➤ Viable Choices

- Funding, Education, Encouragement, Evaluation, Performance Measures