

Memorandum

City of Lawrence / Douglas County

Planning & Development Services

TO: David L. Corliss, City Manager
Craig Weinaug, County Administrator

FROM: Scott McCullough, Director

Date: February 2, 2012

RE: Site Plan Processing Analysis – 2011 Reporting Period

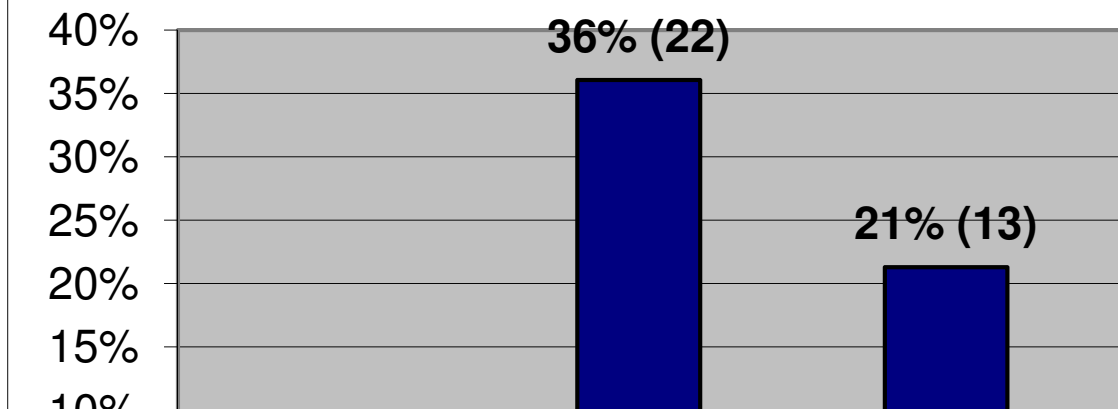
This report provides a summary of site plan data for 2011, as well as a comparison to years 2009 and 2010. Site planning is one of the main procedural tools used to review development projects against the city's and county's development codes.

The County Commission reviews most site plans in the unincorporated areas of the county. In Lawrence, site planning is largely an administrative function with appeals submitted directly to the City Commission. In 2011 there were no appeals submitted for City Commission consideration, though the Commission did spend considerable time in 2011 on the Dillon's project on Massachusetts Street, which was a late 2010 application, and recently considered the Remington Square Apartment site plan in conjunction with its rezoning request.

The attached table provides data on the 2011 site plan applications. Highlights of the data include:

- A total of 83 site plan applications were processed for the city and county combined.
- As of January 13, 2012 61 applications were approved, 1 was denied (Remington Square based on rezoning denial), 6 were withdrawn, and 15 were in some level of process.
- 60% of applications were completed within 30 business days while 23% were approved after 40 business days.
- The average number of business days that staff had the application in review was 19.
- The maximum number of business days to process an application from submittal to approval was 122 for the Hunter's Ridge Apartment complex at the northeast corner of 6th Street and Stoneridge Drive.

2011 Site Plan Approval



A few of the projects notable for their size or impact to a neighborhood, along with the total time, in business days, from submittal to approval, include:

1. Poehler Multi-Dwelling Structure (619 E 8th St.) – 73 days
2. Natural Grocers (1301 W. 23rd St.) – 55 days
3. Hunter's Ridge Apartment Complex (NE corner of 6th and Stoneridge Dr.) – 122 days
4. Briggs Subaru Dealership (2233 W. 29th Terr.) – 32 days
5. McFarlane Aviation Light Industrial Bldg (694 E. 1700 Rd.) – 46 days

Multi-year comparison

	2009	2010	2011
Number of Site Plans Processed	56	65	83
Percent completed within 30 business days	60%	43%	60%
Avg. business days in staff review	14	21	19

It is important to understand that issues, some related to city resources and processes and some related to the applicant, can extend the time required to complete the review process. City-related issues include staffing resources in Planning as well as other city departments that delay review comments, taking time to research and render determinations on a code issue (may require input of the City Attorney's Office, City Manager or other departments), reviewing associated cases for the same property (plats, floodplain development permit, etc.), and the fact that site plan reviews compete

for the same time needed to review other types of applications that may have statutory or local code deadlines (rezonings, SUPs, special event permits, etc.). Site plan review can be delayed when the deadline for planning commission reports, or other assignments that have more critical deadlines, are nearing.

Issues that can affect the total review time that are related to the applicant include substantially revising the application one or more times during the review, the ability of consultants to perform in a timely manner, private financing issues, private ownership or other legal matters, state or federal review, working with neighborhood associations or individual neighbors, etc. Further, the actual review may trigger elements of a project that are not compliant with the Development Code, thus requiring a decision by the applicant of whether to seek variances from the Board of Zoning Appeals or comply with the Development Code by modifying the design.

It is important to keep in mind that there are several entities that have an interest in site planning. These interests include:

1. The City – the city has an interest in quality development that meets the governing body established codes and best practices for utility placement, access management, storm water management, architectural compatibility, lighting, life-safety, parking, etc.
2. The applicant/owner – the owner has an interest in receiving a timely and consistent review and determination to quickly reach the building permit stage of the project or appeal a determination of denial to the city commission.
3. The surrounding neighborhood – the neighborhood has an interest in maintaining property values and quality of life.

Continuous Improvement

Staff made substantial progress on two efforts intended to further the efficiency of the site planning process. The first is the recent adoption by both the City and County Commissions of the joint Subdivision Regulations. Site planning is often linked with platting and the code was revised to streamline the platting process.

The second major effort that will be less visible to applicants but helpful to staff is implementation of the Innoprise application tracking software system. This will help all review agencies provide quick input to Planning staff as reviews are completed.

Main Site Plan Report

Case Action	Planner	Case #	Address	Project Name	Description	City or County	Sub. Date	Plan Review Date	Initial Comm. Sent to Appl.	Initial Rev. Back from Appl.	Final Comm. Sent to Appl.	Final Rev. Back from Appl.	App. Date	Rel. Date	Sub. to Plan Review Date	Plan Rev. to Initial Comm. Sent	Initial Comm. Sent to Initial Rev. Back	Initial Rev. Back to Final Comm. Sent	Final Comm. Sent to Final Rev. Back	Final Rev. Back to App. Date	App. Date to Release Date	Sub. Date to Initial Comm. Sent	Initial Comm. Sent to Final Rev. Back	Sub. Date to App. Date	Sub. Date to Release Date
	AAM	SP-6-35-11	529 MAPLE ST	QUALITY TOW	NEW BUILDI	City	6/24/2011	7/1/2011							5										
	DDW	SP-12-82-1	720 E 23RD ST	RACO CAR WASH	TWO SERVI	City	12/21/2011	12/30/2011	1/4/2012						7	3						10			
	DDW	SP-12-83-1	3801 W 6TH ST		FORMER ST	City	12/23/2011	12/30/2011							5										
	MJL	SP-10-66-1	1102 W 24TH ST	GARAGE CONVERS	APARTMENT	City	10/20/2011	10/28/2011	11/3/2011	12/14/2011	12/15/2011	12/20/2011			6	4	29	1	3			10	33		
	MKM	SP-10-69-1	2828 IOWA ST		PARKING FO	City	10/25/2011	11/4/2011	11/9/2011						8	3						11			
	MKM	SP-12-81-1	707 VERMONT ST	LIBRARY	RENOVATIO	City	12/12/2011	12/16/2011	12/22/2011						4	4						8			
	MKM	SP-2-7-11	1500 E 23RD ST	ZARCO	DRIVE THRU	City	2/8/2011	2/18/2011	2/25/2011	4/20/2011	4/29/2011				8	5	38	7				13			
	MKM	SP-8-51-11	1421 W 19TH ST	LUTHERAN CAMPU	neighborhoo	City	8/24/2011	9/2/2011	9/9/2011	1/11/2012					7	5	88					12			
	SLD	SP-10-60-1	2211 SILICON AVE	LAWRENCE EVANG	BUILDING A	City	10/6/2011	10/14/2011	10/27/2011	11/23/2011	11/23/2011	12/21/2011			6	9	19	0	20			15	39		
	SLD	SP-10-63-1	2128 HARPER ST	SPRINT ANTENNA	COMMUNIC	City	10/11/2011	10/21/2011	10/27/2011						8	4						12			
	SLD	SP-12-78-1	2101 & 2121 W 29	BRIGGS NISSAN	VEHICLE SA	City	12/2/2011	12/9/2011							5										
	SLD	SP-12-79-1	2125 WAKARUSA D	SPRINT	COMMUNIC	City	12/9/2011	12/16/2011							5										
	SLD	SP-12-80-1	302 E 1600 RD	SPRINT	COMMUNIC	County	12/9/2011	12/16/2011							5										
	SLD	SP-12-84-1	2840 IOWA ST	DALE WILLEY	OFFICE AND	City	12/27/2011	1/6/2012	1/6/2012						8	0						8			
	SLD	SP-9-57-11	111 11TH STREET	SPRINT ANTENN D	SPRINT ANT	City	9/20/2011	9/30/2011	10/21/2011						8	15						23			
Approved	AAM	SP-7-42-11	900 EAST 15TH ST	BURROUGHS CREE	PLAYGROUN	City	7/19/2011	7/22/2011	7/22/2011	7/22/2011	7/22/2011	7/22/2011	8/24/2011	8/24/2011	3	0	0	0	0	23	0	3	0	26	26
Approved	DDW	SP-1-1-11	2312 HARVARD RD	Christ Covenant Ch	Classroom a	City	1/3/2011	1/14/2011	1/18/2011	2/24/2011	2/24/2011	2/24/2011	2/25/2011	4/8/2011	9	2	27	0	0	1	30	11	27	39	69
Approved	DDW	SP-11-77-1	2004 E 23RD ST	CORNERSTONE PL	ADDITIONA	City	11/29/2011	12/2/2011	12/12/2011	1/4/2012	1/4/2012	1/4/2012	1/10/2012	1/11/2012	3	6	17	0	0	4	1	9	17	30	31
Approved	DDW	SP-1-3-11	1623 N 1320 RD	OCONNELL YOUTH	BUILDING A	County	1/4/2011	1/14/2011	1/18/2011	1/19/2011	1/19/2011	1/19/2011	1/26/2011	1/26/2011	8	2	1	0	0	5	0	10	1	16	16
Approved	DDW	SP-4-23-11	2329 IOWA ST	SAINTS PUB & PAT	FORMER OL	City	4/22/2011	4/29/2011	5/4/2011	5/19/2011	5/23/2011	5/26/2011	6/1/2011	6/16/2011	5	3	11	2	3	4	11	8	16	28	39
Approved	DDW	SP-5-28-11	299 E 550 RD	DETACHED GARAG	DETACHED	County	5/17/2011	5/20/2011	5/23/2011	5/30/2011	5/30/2011	5/30/2011	5/31/2011	5/31/2011	3	1	5	0	0	1	0	4	5	10	10
Approved	DDW	SP-5-30-11	325 MAINE ST	LAWRENCE MEMO	RENOVATIO	City	5/27/2011	6/3/2011	6/7/2011	6/23/2011	6/23/2011	6/27/2011	6/28/2011	6/30/2011	5	2	12	0	2	1	2	7	14	22	24
Approved	DDW	SP-6-37-11	2829 IOWA ST	LAIRD NOLLER		City	6/28/2011	7/8/2011	7/13/2011	7/21/2011	8/1/2011	8/15/2011	8/15/2011	9/13/2011	8	3	6	7	10	0	21	11	23	34	55
Approved	DDW	SP-6-38-11	1473 HWY 40	JELLYSTONE PARK	Minor Site PI	City	6/28/2011	7/8/2011	7/13/2011	7/25/2011	7/25/2011	7/25/2011	7/26/2011	7/26/2011	8	3	8	0	0	1	0	11	8	20	20

Case Action	Planner	Case #	Address	Project Name	Description	City or County	Sub. Date	Plan Review Date	Initial Comm. Sent to Appl.	Initial Rev. Back from Appl.	Final Comm. Sent to Appl.	Final Rev. Back from Appl.	App. Date	Rel. Date	Sub. to Plan Review Date	Plan Rev. to Initial Comm. Sent	Initial Comm. Sent to Initial Rev. Back	Initial Rev. Back to Final Comm. Sent	Final Comm. Sent to Final Rev. Back	Final Rev. Back to App. Date	App. Date to Release Date	Sub. Date to Initial Comm. Sent	Initial Comm. Sent to Final Rev. Back	Sub. Date to App. Date	Sub. Date to Release Date
Approved	DDW	SP-9-53-11	1120 E 23RD ST S	CRIMSON AND BLU	CAR LOT	City	9/1/2011	9/9/2011	9/13/2011	9/13/2011	9/13/2011	9/13/2011	9/21/2011	9/21/2011	6	2	0	0	0	6	0	8	0	14	14
Approved	LBZ	SP-10-67-1	1225 KENTUCKY S	RENOVATION	RENOVATIO	City	10/21/2011	10/28/2011	11/8/2011	11/11/2011	11/18/2011	11/22/2011	11/29/2011	12/15/2011	5	7	3	5	2	5	12	12	10	27	39
Approved	LBZ	SP-4-20-11	923 OHIO ST		8 BEDROOM	City	4/18/2011	4/22/2011	5/4/2011	5/10/2011	6/21/2011	7/25/2011	7/27/2011	9/29/2011	4	8	4	30	24	2	46	12	58	72	118
Approved	LBZ	SP-7-41-11	1000 KENTUCKY S	FIRST CHRISTIAN	PLAYGROUN	City	7/18/2011	7/22/2011	8/3/2011	8/10/2011	8/24/2011	8/31/2011	9/9/2011	9/23/2011	4	8	5	10	5	7	10	12	20	39	49
Approved	LBZ	SP-8-44-11	1141 MASSACHUSE	SOUTH PARK RECR	LANDSCAPE	City	8/4/2011	8/12/2011	8/16/2011	8/22/2011	8/22/2011	8/22/2011	8/22/2011	9/29/2011	6	2	4	0	0	0	28	8	4	12	40
Approved	LBZ	SP-8-45-11	619 E 8TH ST	POEHLER WAREHO	49 APARTM	City	8/5/2011	8/19/2011	8/30/2011	9/16/2011	10/7/2011	11/9/2011	11/16/2011	11/18/2011	10	7	13	15	23	5	2	17	51	73	75
Approved	LBZ	SP-8-48-11	DELAWARE ST	OPEN GRAVEL LOT	PARKING LO	City	8/5/2011	8/19/2011	8/30/2011	9/15/2011	10/7/2011	11/9/2011	11/17/2011	11/18/2011	10	7	12	16	23	6	1	17	51	74	75
Approved	LBZ	SP-8-52-11	1115 MASSACHUSE	FUZZYS TACOS	SIDEWALK	City	8/26/2011	9/2/2011	9/12/2011	9/13/2011	9/13/2011	9/13/2011	10/4/2011	10/6/2011	5	6	1	0	0	15	2	11	1	27	29
Approved	MJL	SP-11-72-1	831 MASSACHUSET	THE TAN COMPAN	TRASH & TR	City	11/7/2011	11/11/2011	11/16/2011	11/16/2011	11/16/2011	11/16/2011	11/17/2011	11/17/2011	4	3	0	0	0	1	0	7	0	8	8
Approved	MJL	SP-1-5-11	1411 E 1850 RD	BUILDING BLOCKS	DAYCARE	County	1/10/2011	1/14/2011	1/25/2011	2/8/2011	2/8/2011	2/8/2011	2/16/2011	2/18/2011	4	7	10	0	0	6	2	11	10	27	29
Approved	MJL	SP-2-11-11	1701 MASSACHUSE	CAT CLINIC OF LA		City	2/24/2011	3/4/2011	3/9/2011	3/16/2011	3/16/2011	3/29/2011	3/31/2011	4/4/2011	6	3	5	0	9	2	2	9	14	25	27
Approved	MJL	SP-2-9-11	2840 IOWA ST	DALE WILLEY AUT	ENTRY ADDI	City	2/16/2011	2/16/2011	2/16/2011	2/16/2011	2/16/2011	2/16/2011	2/18/2011	2/18/2011	0	0	0	0	0	2	0	0	0	2	2
Approved	MJL	SP-4-24-11	4901 LEGENDS DR	RANJBAR	SIDEWALK	City	4/28/2011	5/6/2011	5/11/2011	6/30/2011	6/30/2011	6/30/2011	7/13/2011		6	3	36	0	0	9		9	36	54	
Approved	MKM	SP-10-61-1	704 - 728 CONNEC	PARKING LOT	PARKING LO	City	10/10/2011	10/14/2011	10/19/2011	10/20/2011	11/4/2011	11/4/2011	11/4/2011	11/18/2011	4	3	1	11	0	0	10	7	12	19	29
Approved	MKM	SP-10-64-1	3220 S IOWA	conversion of outlot	NEW STRUC	City	10/14/2011	10/21/2011	10/26/2011	10/28/2011	11/4/2011	11/14/2011	11/17/2011	11/29/2011	5	3	2	5	6	3	8	8	13	24	32
Approved	MKM	SP-1-2-11	1400 E 8TH ST	LAWRENCE WASTE	ANAEROBIC	City	1/4/2011	1/14/2011	1/14/2011	1/14/2011	1/28/2011	2/3/2011	2/4/2011	2/8/2011	8	0	0	10	4	1	2	8	14	23	25
Approved	MKM	SP-3-12-11	1676 E 1550 RD	NUNEMAKER-ROSS	NUNEMAKE	County	3/3/2011	3/11/2011	3/17/2011	3/31/2011	4/28/2011	5/3/2011	5/11/2011	6/16/2011	6	4	10	20	3	6	26	10	33	49	75
Approved	MKM	SP-3-15-11	1301 W 23RD ST		NATURAL F	City	3/15/2011	3/25/2011	3/31/2011	4/8/2011	5/20/2011	5/24/2011	5/31/2011	7/1/2011	8	4	6	30	2	5	23	12	38	55	78
Approved	MKM	SP-3-18-11	NE CORNER STON	HUNTER'S PLACE A	MAJOR DEV	City	3/23/2011	4/1/2011	4/15/2011	7/15/2011	8/25/2011	9/2/2011	9/9/2011	9/21/2011	7	10	65	29	6	5	8	17	100	122	130
Approved	MKM	SP-5-27-11	704-728 CONNECT	INTERIOR REMOD	BANQUET F	City	5/10/2011	5/13/2011	5/18/2011	6/6/2011	7/5/2011	7/12/2011	7/12/2011	8/12/2011	3	3	13	21	5	0	23	6	39	45	68
Approved	MKM	SP-6-33-11	1202 E 23RD ST	CAL TESTING OFFI	REMODEL	City	6/22/2011	6/22/2011	6/22/2011	6/22/2011	6/30/2011	7/1/2011	7/5/2011	7/5/2011	0	0	0	6	1	2	0	0	7	9	9
Approved	MKM	SP-7-40-11	3200 CLINTON PK	CLINTON PARKWA	additin for d	City	7/8/2011	7/15/2011	7/26/2011	8/1/2011	8/2/2011	8/5/2011	8/4/2011	8/15/2011	5	7	4	1	3	1	7	12	8	19	26
Approved	MKM	SP-8-46-11	806 PENNSYLVANI	CIDER HOUSE BLD	1 AND 2 BE	City	8/5/2011	8/19/2011	8/30/2011	9/16/2011	10/7/2011	11/9/2011	11/17/2011	11/21/2011	10	7	13	15	23	6	2	17	51	74	76
Approved	MKM	SP-8-47-11	810 PENNSYLVANI	VINEGAR BLDG	ART STUDIO	City	8/5/2011	8/19/2011	8/30/2011	9/15/2011	10/7/2011	11/9/2011	11/17/2011	11/21/2011	10	7	12	16	23	6	2	17	51	74	76
Approved	SLD	SP-10-62-1	204 EISENHOWER	WAKARUSA APART	MULTI DWE	City	10/11/2011	10/21/2011	11/1/2011	11/18/2011	11/18/2011	11/18/2011	12/5/2011		8	7	13	0	0	11		15	13	39	
Approved	SLD	SP-10-65-1	1250 NORTH 1800	SPRINTANTENNAS	COMMUNIC	City	10/17/2011	10/28/2011	11/1/2011	11/1/2011	11/1/2011	11/1/2011	11/1/2011	11/1/2011	9	2	0	0	0	0	0	11	0	11	11

Friday, January 13, 2012

Case Action	Planner	Case #	Address	Project Name	Description	City or County	Sub. Date	Plan Review Date	Initial Comm. Sent to Appl.	Initial Rev. Back from Appl.	Final Comm. Sent to Appl.	Final Rev. Back from Appl.	App. Date	Rel. Date	Sub. to Plan Review Date	Plan Rev. to Initial Comm. Sent	Initial Comm. Sent to Initial Rev. Back	Initial Rev. Back to Final Comm. Sent	Final Comm. Sent to Final Rev. Back	Final Rev. Back to App. Date	App. Date to Release Date	Sub. Date to Initial Comm. Sent	Initial Comm. Sent to Final Rev. Back	Sub. Date to App. Date	Sub. Date to Release Date
Approved	SLD	SP-10-68-1	4700 OVERLAND D	FREESTATE HIGH	COMMUNIC	City	10/24/2011	10/28/2011	11/1/2011	11/1/2011	11/1/2011	11/1/2011	11/1/2011	11/8/2011	4	2	0	0	0	0	5	6	0	6	11
Approved	SLD	SP-10-70-1	1758 E 600 RD	SPRINT	COMMUNIC	County	10/31/2011	11/4/2011	11/11/2011	11/11/2011	11/11/2011	11/11/2011	11/11/2011	11/16/2011	4	5	0	0	0	0	3	9	0	9	12
Approved	SLD	SP-11-71-1	925 N IOWA ST	SPRINT CELL ANTE	COMMUNIC	City	11/4/2011	11/11/2011	11/15/2011	11/15/2011	11/15/2011	11/15/2011	11/21/2011	11/22/2011	5	2	0	0	0	4	1	7	0	11	12
Approved	SLD	SP-11-73-1	1315 WAKARUSA D	KU CENTER FOR R	ADA PARKIN	City	11/21/2011	12/2/2011	12/12/2011	12/12/2011	12/12/2011	12/12/2011	12/15/2011	1/5/2012	9	6	0	0	0	3	15	15	0	18	33
Approved	SLD	SP-11-74-1	1103 E 900 RD	SPRINT CELLULAR	SWB CLINT	County	11/10/2011	11/18/2011	11/22/2011	11/22/2011	11/22/2011	11/22/2011	11/22/2011	11/22/2011	6	2	0	0	0	0	0	8	0	8	8
Approved	SLD	SP-11-75-1	1429 KASOLD DR	SPRINT CELLULAR	PRESBYTERI	City	11/11/2011	11/18/2011	11/22/2011	11/22/2011	11/22/2011	11/22/2011	11/22/2011	11/22/2011	5	2	0	0	0	0	0	7	0	7	7
Approved	SLD	SP-11-76-1	1225 TENNESSEE S	10 BEDROOM CON	CONGRAGTE	City	11/11/2011	11/18/2011	12/13/2011	12/20/2011	12/20/2011	12/20/2011	1/4/2012		5	17	5	0	0	11		22	5	38	
Approved	SLD	SP-2-10-11	2233 W 29TH TER	BRIGGS SUBARU	BUILDING A	City	2/18/2011	2/25/2011	3/15/2011	3/29/2011	3/31/2011	3/31/2011	4/5/2011	4/12/2011	5	12	10	2	0	3	5	17	12	32	37
Approved	SLD	SP-2-8-11	711 W 23RD ST	WESTLAKE HARDW	SEASONAL S	City	2/17/2011	2/25/2011	2/25/2011	2/25/2011	2/25/2011	2/25/2011	3/9/2011	3/14/2011	6	0	0	0	0	8	3	6	0	14	17
Approved	SLD	SP-3-13-11	6228 W 22ND CT	NEIGHBORHOOD S	BATH HOUS	City	3/11/2011	3/18/2011	3/22/2011	3/24/2011	3/29/2011	3/29/2011	3/30/2011	3/30/2011	5	2	2	3	0	1	0	7	5	13	13
Approved	SLD	SP-3-14-11	734 MASSACHUSET	EXEMPT CHANGE	RESTAURNA	City	3/15/2011	3/15/2011	3/15/2011	3/15/2011	3/15/2011	3/15/2011	3/15/2011	3/15/2011	0	0	0	0	0	0	0	0	0	0	0
Approved	SLD	SP-3-16-11	694 E 1700 RD	MCFARLANE AVIAT	BUILIDNG A	County	3/16/2011	3/25/2011	4/19/2011	4/29/2011	5/5/2011	5/5/2011	5/19/2011	7/7/2011	7	17	8	4	0	10	35	24	12	46	81
Approved	SLD	SP-3-17-11	2957 FOUR WHEEL	BRIGGS BODY SHO	CHANGE OF	City	3/17/2011	3/25/2011	4/5/2011	4/20/2011	4/28/2011	4/28/2011	4/28/2011	5/17/2011	6	7	11	6	0	0	13	13	17	30	43
Approved	SLD	SP-4-19-11	601 KASOLD DR	WESTLAKE HARDW	SEASONAL S	City	4/7/2011	4/15/2011	4/28/2011	5/2/2011	5/2/2011	5/2/2011	5/5/2011	5/5/2011	6	9	2	0	0	3	0	15	2	20	20
Approved	SLD	SP-4-25-11	1733 MASSACHUSE	SHELL GAS STATIO	DRIVE THRU	City	4/29/2011	5/6/2011	5/18/2011	7/25/2011	7/26/2011	7/26/2011	7/26/2011	7/26/2011	5	8	48	1	0	0	0	13	49	62	62
Approved	SLD	SP-5-26-11	308 E 700 RD	AT&T MOBILITY T	COMMUNIC	County	5/5/2011	5/13/2011	5/23/2011	5/27/2011	5/27/2011	5/27/2011	6/15/2011	6/16/2011	6	6	4	0	0	13	1	12	4	29	30
Approved	SLD	SP-6-32-11	900 & 914 IOWA S	ZARCO 66	2 GAS STATI	City	6/14/2011	6/17/2011	7/7/2011	10/7/2011	11/1/2011	11/1/2011	11/10/2011		3	14	66	17	0	7		17	83	107	
Approved	SLD	SP-6-34-11	1516 W 23RD ST	EXTERIOR & INTE	CHANGE OF	City	6/20/2011	7/1/2011	7/14/2011	7/14/2011	7/14/2011	7/14/2011	7/15/2011	11/8/2011	9	9	0	0	0	1	82	18	0	19	101
Approved	SLD	SP-6-36-11	1927 E 100 ROAD	AMERICAN TOWER	COMMUNIC	County	6/6/2011	6/8/2011	6/8/2011	6/8/2011	6/8/2011	6/8/2011	6/14/2011	6/14/2011	2	0	0	0	0	4	0	2	0	6	6
Approved	SLD	SP-7-39-11	26195 LINWOOD R	HONEY CREEK DIS	REMODEL A	County	7/5/2011	7/22/2011	8/1/2011	8/17/2011	8/17/2011	8/17/2011	8/18/2011	8/18/2011	13	6	12	0	0	1	0	19	12	32	32
Approved	SLD	SP-8-43-11	1029 MASSACHUSE	PYRAMID PIZZA	HOSPITALIT	City	7/29/2011	8/5/2011	8/5/2011	8/5/2011	8/5/2011	8/5/2011	8/23/2011		5	0	0	0	0	12		5	0	17	
Approved	SLD	SP-8-49-11	1800 NAISMITH D	VERIZON WIRELES	COMMUNIC	City	8/19/2011	8/26/2011	8/30/2011	8/30/2011	8/30/2011	8/30/2011	9/1/2011	9/2/2011	5	2	0	0	0	2	1	7	0	9	10
Approved	SLD	SP-8-50-11	1901 STRATFORD	VERIZON WIRELES	COMMUNIC	City	8/19/2011	9/2/2011	9/2/2011	9/27/2011	9/27/2011	9/27/2011	10/21/2011	10/21/2011	10	0	17	0	0	18	0	10	17	45	45
Approved	SLD	SP-9-54-11	1225A E 23RD ST	KIA DEALERSHIP	CANOPY	City	9/16/2011	9/23/2011	9/27/2011	9/28/2011	9/28/2011	9/28/2011	9/28/2011	9/30/2011	5	2	1	0	0	0	2	7	1	8	10
Approved	SLD	SP-9-58-11	4601 CLINTON PK	RAINTREE MONTE	BUILDING A	City	9/21/2011	9/30/2011	10/5/2011	11/3/2011	11/3/2011	11/3/2011	11/3/2011	11/22/2011	7	3	21	0	0	0	13	10	21	31	44
Approved	SLD	SP-9-59-11	2300 W 31ST ST	SPRINT MONOPOL	COMMUNIC	City	9/23/2011	9/30/2011	10/28/2011	10/28/2011	10/28/2011	10/28/2011	11/1/2011	11/7/2011	5	20	0	0	0	2	4	25	0	27	31

Friday, January 13, 2012

Case Action	Planner	Case #	Address	Project Name	Description	City or County	Sub. Date	Plan Review Date	Initial Comm. Sent to Appl.	Initial Rev. Back from Appl.	Final Comm. Sent to Appl.	Final Rev. Back from Appl.	App. Date	Rel. Date	Sub. to Plan Review Date	Plan Rev. to Initial Comm. Sent	Initial Comm. Sent to Initial Rev. Back	Initial Rev. Back to Final Comm. Sent	Final Comm. Sent to Final Rev. Back	Final Rev. Back to App. Date	App. Date to Release Date	Sub. Date to Initial Comm. Sent	Initial Comm. Sent to Final Rev. Back	Sub. Date to App. Date	Sub. Date to Release Date
Denied	SLD	SP-9-56-11	4100 W 24TH PL	REMINGTON SQUA	MULTI FAMI	City	9/20/2011	9/30/2011	10/6/2011	10/10/2011					8	4	2					12			
Withdrawn	DRG	SP-5-29-11	855 MAPLE ST	IMI - INDUSTRIAL	CHAIN LINK	City	5/23/2011	6/3/2011	6/29/2011						9	18						27			
Withdrawn	LBZ	SP-4-21-11	1043 INDIANA ST				4/18/2011	4/22/2011							4										
Withdrawn	LBZ	SP-4-22-11	623 VERMONT ST	DEMPSEYS	DECK	City	4/19/2011	4/22/2011	4/28/2011						3	4						7			
Withdrawn	MKM	SP-1-4-11	711 CONNECTICUT	NEW CONSTRUCTI	MULTI-DWE	City	1/7/2011	1/14/2011	2/1/2011		2/4/2011				5	12						17			
Withdrawn	SLD	SP-6-31-11	900/918 MISSISSIP	DRIVE-THRU	COFFEE RO	City	6/13/2011	6/17/2011	7/5/2011	7/26/2011					4	12	15					16			
Withdrawn	SLD	SP-9-55-11	1400 MASSACHUSE	CENTRAL MIDDLE	PARKING LO	City	9/19/2011	9/30/2011	10/10/2011	12/13/2011					9	6	46					15			

Case Action	Planner	Case #	Address	Project Name	Description	City or County	Sub. Date	Plan Review Date	Initial Comm. Sent to Appl.	Initial Rev. Back from Appl.	Final Comm. Sent to Appl.	Final Rev. Back from Appl.	App. Date	Rel. Date	Sub. to Plan Review Date	Plan Rev. to Initial Comm. Sent	Initial Comm. Sent to Initial Rev. Back	Initial Rev. Back to Final Comm. Sent	Final Comm. Sent to Final Rev. Back	Final Rev. Back to App. Date	App. Date to Release Date	Sub. Date to Initial Comm. Sent	Initial Comm. Sent to Final Rev. Back	Sub. Date to App. Date	Sub. Date to Release Date
----------------	---------	--------	---------	--------------	-------------	-------------------	-----------	------------------------	--------------------------------------	--	------------------------------------	--	--------------	-----------	-----------------------------------	---	--	--	--	--	------------------------------------	---	---	---------------------------------	------------------------------------

Case Action	Planner	Case #	Address	Project Name	Description	City or County	Sub. Date	Plan Review Date	Initial Comm. Sent to Appl.	Initial Rev. Back from Appl.	Final Comm. Sent to Appl.	Final Rev. Back from Appl.	App. Date	Rel. Date	Sub. to Plan Review Date	Plan Rev. to Initial Comm. Sent	Initial Comm. Sent to Initial Rev. Back	Initial Rev. Back to Final Comm. Sent	Final Comm. Sent to Final Rev. Back	Final Rev. Back to App. Date	App. Date to Release Date	Sub. Date to Initial Comm. Sent	Initial Comm. Sent to Final Rev. Back	Sub. Date to App. Date	Sub. Date to Release Date
# of Total Cases		83														Average Days: Submittal to Plan Review Date	6				Maximum Days: Submittal to Plan Review Date	13			
# of Approved Cases		61		% of Approved Cases	73%				2		% of Approved Projects Submittal Date to Approval Date <5 days	3%				Average Days: Plan Review Date to Initial Comm. Sent	6				Maximum Days: Plan Review Date to Initial Comm. Sent	13			
# of Withdrawn Cases		6		% of Withdrawn Cases	7%				22		% of Approved Projects Submittal Date to Approval Date 5-20 days	36%				Average Days: Initial Comm. Sent to Initial Rev. Back	16				Maximum Days: Initial Comm. Sent to Initial Rev. Back	88			
# of Denied Cases		1		% of Denied Cases	1%				13		% of Approved Projects Submittal Date to Approval Date 20-30 days	21%				Average Days: Initial Rev. Back to Final Comm. Sent	11				Maximum Days: Initial Rev. Back to Final Comm. Sent	30			
# of Pending Cases		15		% of Pending Cases	18%				10		% of Approved Projects Sub. Date to Approval Date 30-40 days	16%				Average Days: Final Comm. Sent to Final Rev. Back	10				Maximum Days: Final Comm. Sent to Final Rev. Back	24			
# of City Cases		71		% of City Cases	86%				14		% of Approved Projects Submittal Date to Approval Date > or = 40 days	23%				Average Days:Final Rev. Back to Approval Date	5				Maximum Days:Final Rev. Back to Approval Date	23			
# of County Cases		11		% of County Cases	13%											Average Days:Approval Date to Release Date	12				Maximum Days: Approval Date to Release Date	82			
# of AAM Cases		2		% of AAM Cases	2%											Average Days: Submittal Date to Initial Comments Sent	12				Maximum Days: Submittal Date to Initial Comments Sent	27			
# of DDW Cases		11		% of DDW Cases	13%											Average Days: Initial Comments Sent to Final Revisions Back	23				Maximum Days: Initial Comments Sent to Final Revisions Back	100			
# of DRG Cases		1		% of DRG Cases	1%											Average Days: Submittal to Approval Date	31				Maximum Days: Submittal to Approval Date	122			
# of LBZ Cases		9		% of LBZ Cases	11%											Average Days: Submittal to Release Date	38				Maximum Days: Submittal to Release Date	130			
# of LF Cases		0		% of LF Cases	0%											Average Days: Staff Processing Time to Approval	19				Notes: 1. Day calculations represent working days (weekdays minus holidays). 2. Items noted in shadow boxes are Planning controlled elements of the site plan process.				
# of MJL Cases		6		% of MJL Cases	7%											Average Days: Applicant Processing Time to Approval	12								
# of MKM Cases		16		% of MKM Cases	19%																				
# of SLD Cases		38		% of SLD Cases	46%																				
# of SM Cases		0		% of SM Cases	0%																				
# of SMS Cases		0		% of SMS Cases	0%																				
# of Other Cases		0		% of Other Cases	0%																				