

Sustainability:

Presentation to the Planning Commission

Sept 9, 2015



Eileen Horn, Sustainability Coordinator
ehorn@douglas-county.org
785-330-3121



City of Lawrence



What is sustainability?

United Nations World Commission on
Environment and Development's 1987
Brundtland Report –

sustainable development “meets the needs
of the present without compromising the
ability of future generations to meet their own
needs.”



Sustainability:



Economy



Environment



Society



What is a sustainable community?

- ▶ A sustainable community is one that is **economically, environmentally, and socially healthy and resilient.**
- ▶ It meets challenges through **integrated solutions** rather than through fragmented approaches that meet one of those goals at the expense of the others.
- ▶ And it takes a **long-term perspective** – one that's focused on both the present and future, well beyond the next budget or election cycle.

-Institute for Sustainable Communities



Sustainability in local government: a multi-pronged approach

- **Municipal Leadership**
- **Policy/Programs**
- **Community Engagement**





Energy efficiency & conservation

Alternative fleet fuels

Green buildings

Economic development

Local food systems

Transportation

Water

Waste reduction & recycling

Citizen engagement & education





Energy Efficiency & Conservation:

City of Lawrence

- ▶ Monthly monitoring of EnergyCAP data.
- ▶ Smartmeters on 40+ main City facilities.
- ▶ Energy audits of buildings.
- ▶ Cost-effective retrofits- especially LEDs:
 - ▶ Vermont St. parking garage, New Hampshire parking garage upper lot & parking lot 16
 - ▶ Fire Station #2 (exterior and interior)
 - ▶ Exterior LED lights at Stone Barn, Central Maintenance Garage, Street Division building, Pinckney tunnel, Holcom west parking lot, South Park administration building, Indoor Aquatic Center, City Hall, Airport
 - ▶ Treatment basin lights at Kaw Water Plant, and 70% of basin lights at Wastewater Treatment Plant
 - ▶ Downtown holiday lighting all LED.

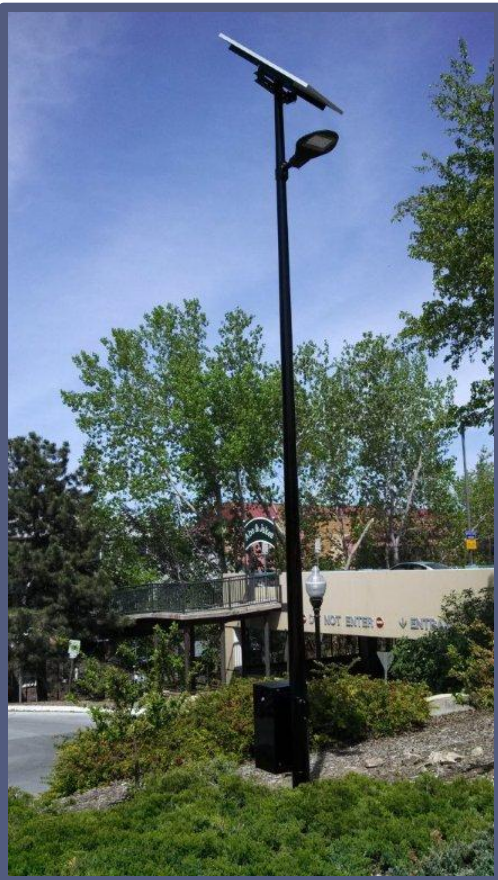




City of Lawrence

Renewable Energy:

- ▶ 10 kW solar PV system installed at Prairie Park Nature Center will produce 14,000 kWh of electricity each year. New educational programming on solar is being developed for adults and kids.
- ▶ Pilot projects with solar PV LED lighting in outdoor applications (i.e. City Hall).



Local, Sustainable Food Systems:

- Lawrence- Douglas County Food Policy Council.
- Common Ground Program.
 - Eight sites in 2014.
- Food hub feasibility study.
- SNAP matching program at Farmers Market.
- Community Supported Agriculture program for employees.



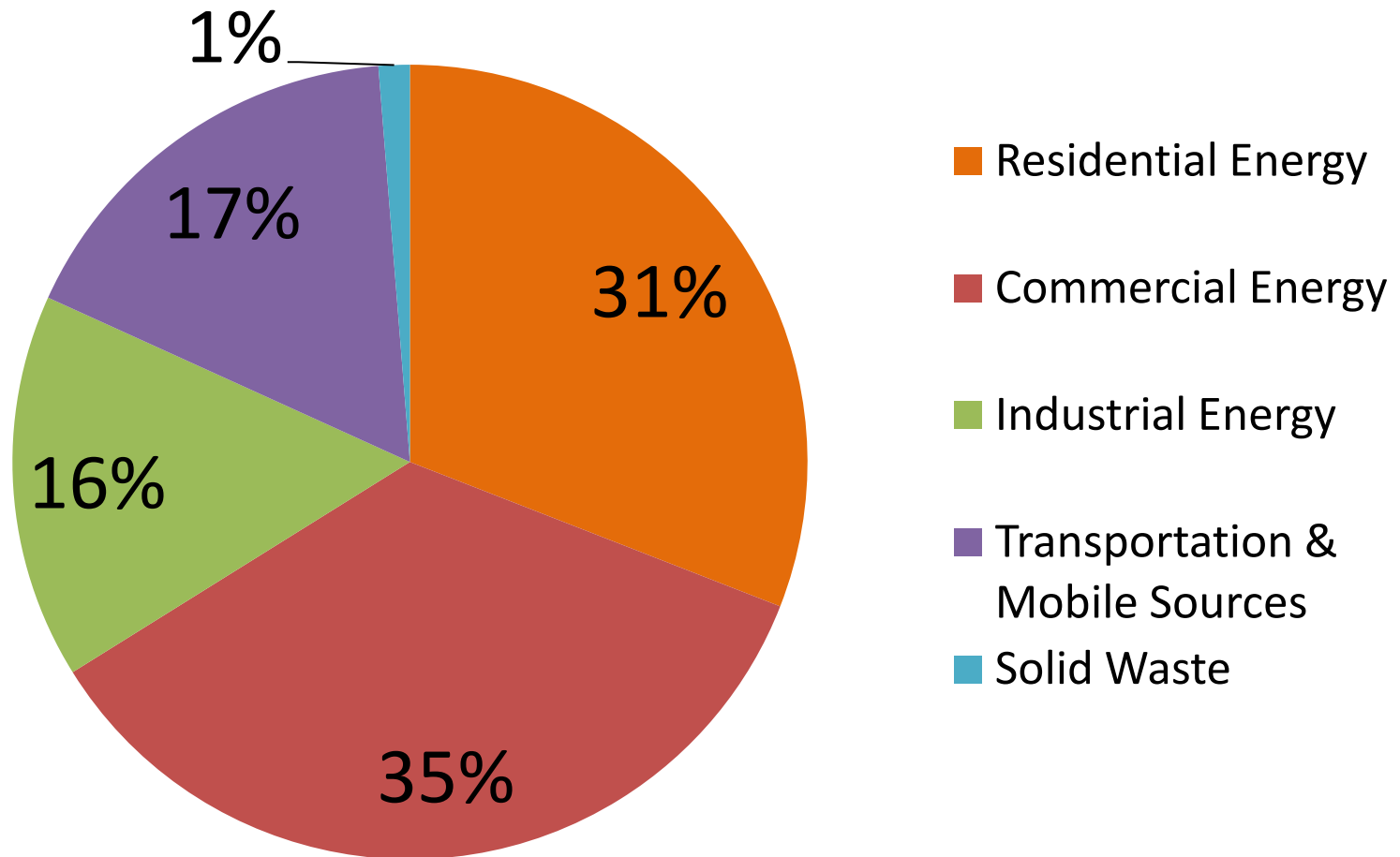
Guiding Documents:

- ▶ City of Lawrence: **Climate Protection Plan** (2009)
- ▶ **Greenhouse Gas Emissions Inventory** (2005, 2012)
- ▶ City of Lawrence reports from Peak Oil Task Force, Solid Waste Task Force, Complete Streets committee, etc.
- ▶ **City & County: Horizon 2020: Chapter 16** (2011)
- ▶ T2040 Transportation Plan
- ▶ **Lawrence SmartCode (2009)**

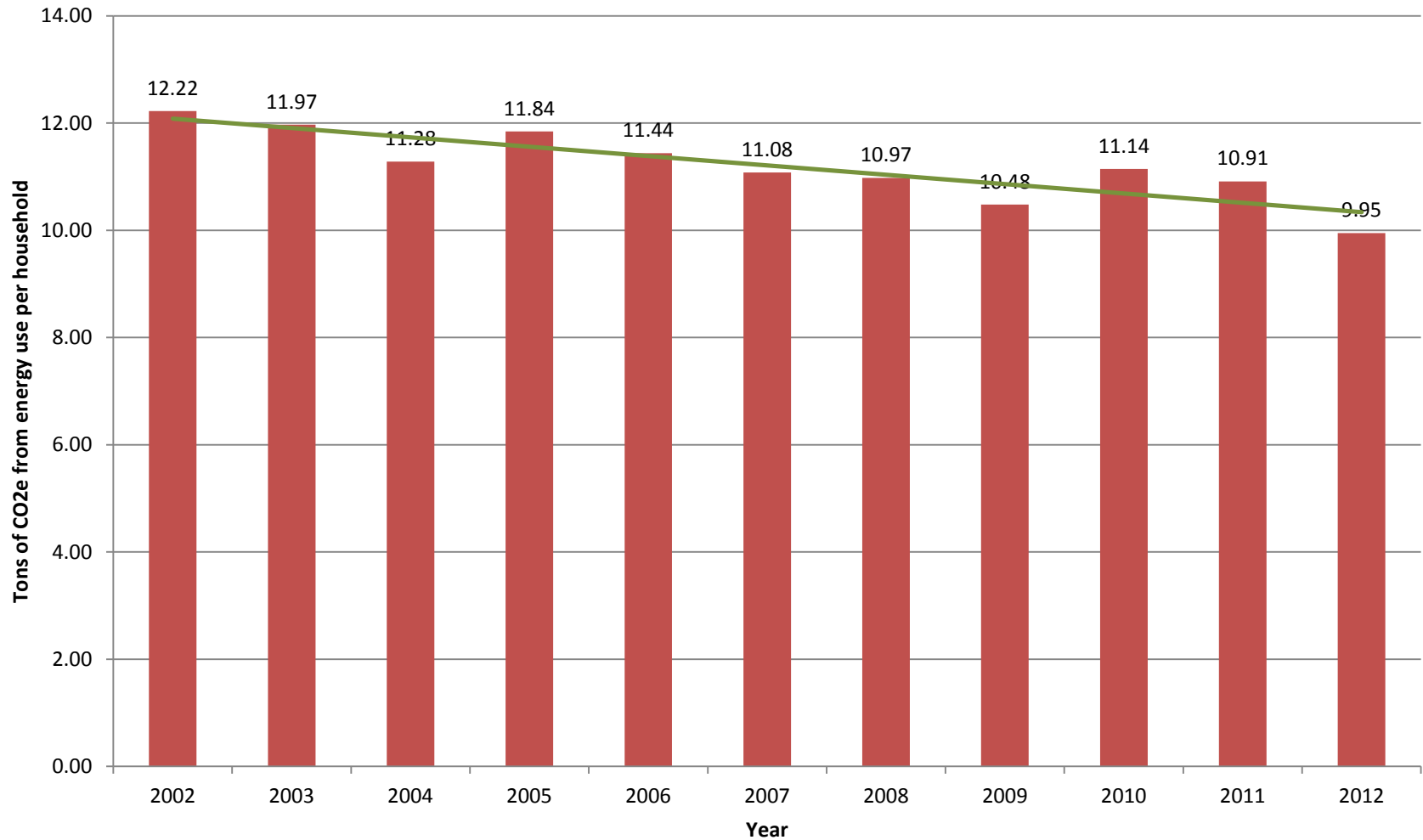
Advisory Boards:

- ▶ Sustainability Advisory Board
 - ▶ Bicycle Advisory Committee
 - ▶ Douglas County Food Policy Council
-

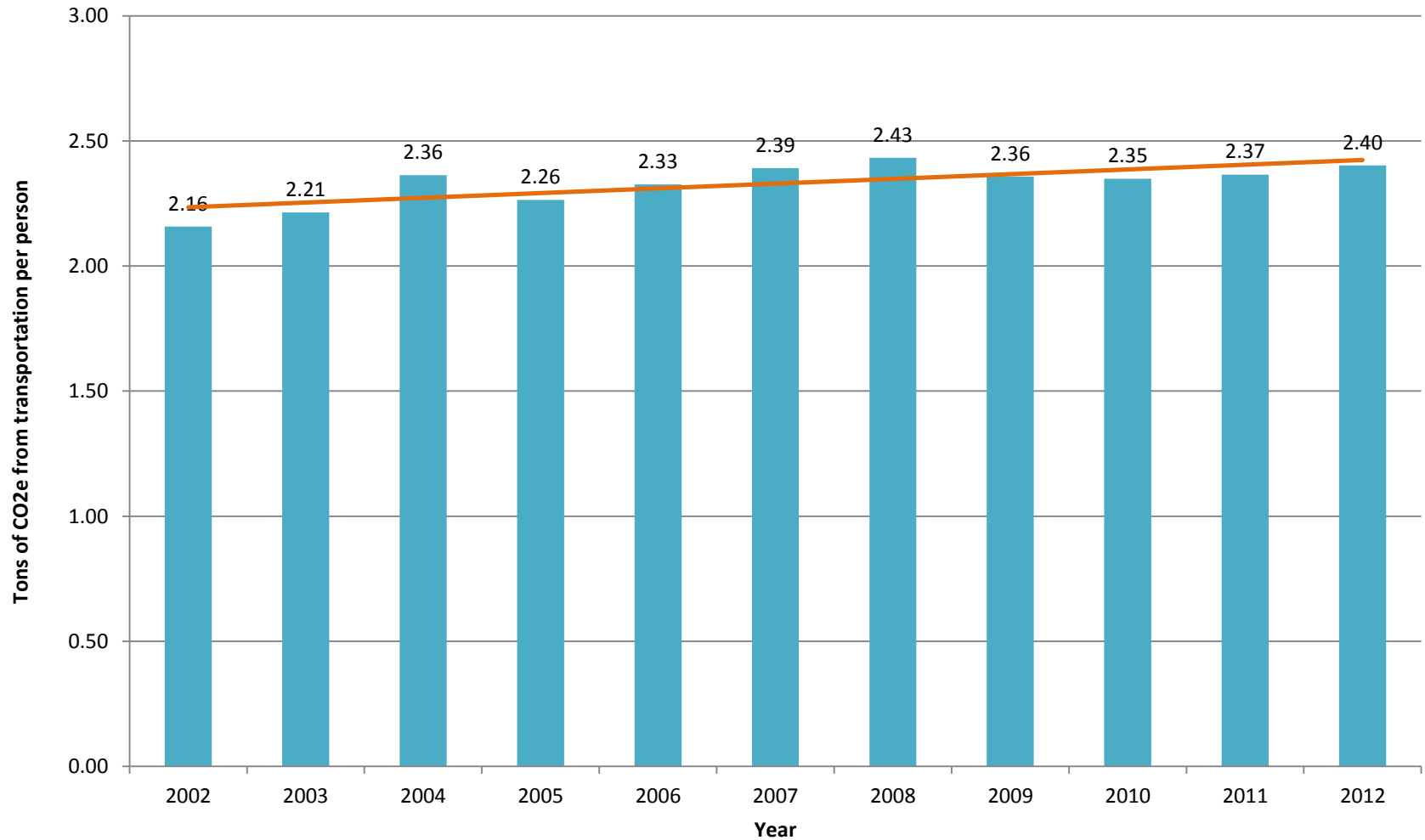
Contributions to Community GHG Emissions by Sector (2012).



GHG Emissions from Energy Used per Household (residential accounts)



GHG Emissions from Transportation Sources per Person



SAB: Top Priorities for Climate Protection:

- 1. Incorporate the goal of reducing greenhouse gas emissions into land use planning.**
(complete streets, redevelopment and infill, bicycle and pedestrian network, transit-oriented development)
- 2. Develop transportation policies and programs to consume less energy and reduce emissions.**
(safe routes to schools, promote public transit, fuel efficiency)
- 3. Strengthen energy conservation policies and building standards.**
(energy efficiency rebates, enhance building codes)
- 4. Develop water conservation policies and programs to consume less water, reducing energy usage and infrastructure costs.**
(automated metering infrastructure, water conservation education, rebates and incentives for conservation)



Lawrence SmartCode

- ▶ The City Commission approved the Lawrence SmartCode on January 20, 2009.
- ▶ The Lawrence SmartCode is an optional development code that is based on Traditional Neighborhood Design principles.
- ▶ The SmartCode is an option for development in the City of Lawrence, Kansas and exists parallel to the existing Development Code of The City of Lawrence, Kansas (Development Code).



Development Bonuses in SmartCode:

Public Goal	Points Earned
Goal I: Provision of Moderately Priced Dwelling Units	
Percentage of all dwelling units which are considered to be Moderately-Priced Dwelling Units	100 points for the first 10%; PLUS 10 points for each 1% provided in addition to 10%
Goal II: Provision of transit supportive development	
Location adjacent to Designated Transit Stop	100 points if located directly adjacent to a transit stop and if stop is integrated into the development and transit stop/pedestrian amenities are provided.
Goal III: Ensuring availability of adequate public facilities	
Location within 1/2 mile of a fire station	10 points
Location within 1 mile of a police station	10 points
Location within 1/4 mile of a public park or open space	25 points
Location within 1/4 mile of a school or cultural center	25 points
Redevelopment of an existing commercial or nonresidential center with adequate utility and transportation infrastructure to support redevelopment	75 points
Location adjacent to the intersection of two streets classified as either Minor Arterial or Principle Arterial according to the adopted Major Thoroughfares Map	15 points
Goal IV: Ensuring protection of environmental quality	
Provision of a green roof or rooftop garden to control stormwater runoff (determination of materials used to constitute a green rooftop garden shall be made by the City Stormwater Engineer)	75 points
Construction of a structure with LEED (Leadership in Energy Efficient Design) Certification	100 points per structure certified
Construction of a residential structure with ENERGY STAR certification	15 points per attached or detached dwelling certified

Horizon 2020: Chapter 16

► These are the key themes the SAB would like to see reflected in Chapter 16:

- ☐ Alternative transportation,
- ☐ Water conservation,
- ☐ Energy conservation,
- ☐ Sustainable agriculture practices,
- ☐ “Green” building practices,
- ☐ Community design that decreases sprawl and preserves rural character,
- ☐ Outdoor recreation,
- ☐ Decreasing air pollution,
- ☐ Preventing water pollution,
- ☐ Encouraging renewable energy,
- ☐ Encouraging infill and smart growth, and
- ☐ Protecting and restoring ecosystems.

Horizon 2020: Issue Action Report

Issue		Horizon 2020 Existing Policy Strength
1	Enhance Readability of Plan	Low
2	Maintain a Strong & Stable Downtown	High
3	Address Quality Housing for All Incomes	Low
4	Protect Natural Resources	High
5	Preserve Historic Buildings & Structures	Medium
6	Create Quality Neighborhoods for All Ages	Low
7	Create Employment Opportunities	High
8	Managing the Future Lawrence Growth	Medium
9	Plan For the Size & Location of Retail Development	Medium
10	Provide Opportunities for Small Neighborhood Retail	Medium
11	Encourage In-Fill Development	Medium
12	Consider Increasing Height/Density in Appropriate Locations	Low
13	Enhance Agricultural Uses & Rural Character in Douglas County	Medium
14	Encourage/Support Local Food System Development	Low
15	Enhance Sidewalks/Trails/Walking Paths	High
16	Plan For and Provide Arts & Cultural Amenities	Low
17	Enhance Bicycle & Pedestrian Safety	High
18	Maintain a Strong System of Parks, Recreation, and Open Space	Medium
19	Enhance the Transportation Network	High

STAR Certification



Table of STAR Goals and Objectives

Built Environment	Climate & Energy	Economy & Jobs	Education, Arts & Community	Equity & Empowerment	Health & Safety	Natural Systems
Ambient Noise & Light	Climate Adaptation	Business Retention & Development	Arts & Culture	Civic Engagement	Active Living	Green Infrastructure
Community Water Systems	Greenhouse Gas Mitigation	Green Market Development	Community Cohesion	Civil & Human Rights	Community Health & Health System	Invasive Species
Compact & Complete Communities	Greening the Energy Supply	Local Economy	Educational Opportunity & Attainment	Environmental Justice	Emergency Prevention & Response	Natural Resource Protection
Housing Affordability	Industrial Sector Resource Efficiency	Quality Jobs & Living Wages	Historic Preservation	Equitable Services & Access	Food Access & Nutrition	Outdoor Air Quality
Infill & Redevelopment	Resource Efficient Buildings	Targeted Industry Development	Social & Cultural Diversity	Human Services	Indoor Air Quality	Water in the Environment
Public Spaces	Resource Efficient Public Infrastructure	Workforce Readiness		Poverty Prevention & Alleviation	Natural & Human Hazards	Working Lands
Transportation Choices	Waste Minimization				Safe Communities	

Next Steps:

- ▶ Deeper dive into a particular topic?
- ▶ Potential collaboration with the City's Sustainability Advisory Board?
- ▶ Interested in STAR Certification process?



Additional Resources:

- Sustainable Communities Division:
<https://www.planning.org/divisions/sustainable/>
- Sustaining Places Initiative:
<https://www.planning.org/sustainingplaces/>
- Sustaining Places Blog:
<http://blogs.planning.org/sustainability/>
- National League of Cities Sustainable Cities Institute:
<http://www.sustainablecitiesinstitute.org/>



Jobs



Payments



Parks & Rec



Trash

Sustainability

[City Sustainability Initiatives](#) ▾

[Participate](#) ▾

[Home](#) / [Public Works](#) / [Quick Links](#) /

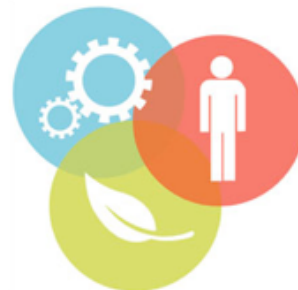
Sustainability

Sustainability means making decisions that balance the needs of the environment, economy, and society — for both present and future generations.

In the City of Lawrence, that means finding more efficient, smarter ways of serving our community.

We share our citizens' commitment to sustainability, and are working to foster a healthy environment that contributes to a growing economy and a livable community.

Sustainability Coordinator **Eileen Horn** can be reached at (785) 330-2873 or via email at ehorn@lawrenceks.org.



Annual Report

 Download the [2012 Sustainability Annual Report](#)

What the city is doing:

Our approach to sustainability involves these key initiatives. Each of these initiatives provides an opportunity to positively impact our City operations and our citizen's quality of life.

- [Energy efficiency & conservation](#)
- [Fuel conservation & alternative fleet fuels](#)
- [Economic development](#)
- [Healthy, local food systems](#)
- [Sustainable transportation](#)
- [Water & utilities](#)
- [Waste reduction & recycling](#)
- [Green building design & construction](#)
- [Outdoors & recreation](#)

What you can do:

Sustainability is a city priority, but creating a healthy environment, economy, and society is going to take the efforts of all of us. Find out [what you can do](#) to participate in the city's sustainability efforts.

- [What you can do](#)
- [Citizen engagement & outreach](#)
- [Sustainability Advisory Board](#)

City Commission · Meeting Agenda

The **04-01-14** City Commission Meeting agenda is now online.

I Want To...

- [Apply](#)
- [Contact](#)
- [Dispose](#)
- [Pay](#)
- [Report](#)
- [Sign Up](#)
- [View](#)

Events

	Tue, Apr 8, 2014
12:00pm	Parks & Recreation Board Meeting
4:10pm	Public Transit Advisory Committee
6:30pm	City Commission Meeting
	Sat, Apr 19, 2014
11:00am	Earth Day Parade & Festival
	Sat, May 10, 2014
10:00am	Lawrence-Douglas Bicycle Helmet Fair
	Thu, Sep 18, 2014
4:00pm	Youth Camps - Golf Advanced (runs W/T 9/19)

[View](#)



DOUGLAS COUNTY

KANSAS



[Departments](#) | [FAQ](#) | [M](#)

Search this site...

[Home](#)

[Residents](#)

[Business](#)

[Courts and Law](#)

[Government](#)

[Employment](#)

[Health and Environment](#)

[Recre](#)

Sustainability

Share this page [f](#) [t](#) [in](#) [g+](#) [e](#) [p](#)

Sustainability means balancing the needs of the economy, environment, and society. Together, we can create a vibrant economy, a healthy environment, and a livable society for all Douglas County residents – today and into the future.

As a County, we are striving for sustainability in our day-to-day operations, our facilities and buildings, the policies we implement, and the education we provide to our employees and citizens. Currently, we're working to reduce the energy use in our buildings and utilize the free renewable power of the sun where it's appropriate. We have a robust recycling program in our County buildings, innovative pilot programs to reduce fuel use in our fleet, and are working to purchase "green" products for office and cleaning supplies. Our first LEED-certified building is under construction, and our Douglas County Food Policy Council continues to be recognized as a regional leader in developing policies and programs to support our local food economy.



Our Services

Energy Efficiency and Renewables



Energy Efficiency and Renewable Energy projects.

Waste Reduction and Recycling



Information on Waste Reduction and Recycling options.

Local Food



Local food systems and programs in Douglas County.

Community and Employee Programs



Community and Employee Programs, including Common Ground.

Green Buildings



Green building options, including LEED.

What You Can Do



What you can do concerning sustainability.

Our Location



County Courthouse

1100 Massachusetts Street, Lawrence, KS 66044, USA (Second Floor)

Office Hours: Monday - Friday, 8:00 a.m. - 5:00 p.m.

Phone(s): 785-330-2873, 785-330-3121

Fax: 785-832-5148

[Email Us](#)



Meet
Sustainability
Coordinator
Eileen Horn

Sustainability
Coordinator Eileen
Horn started her

For more information:

www.lawrenceks.org/sustainability

<http://www.douglascountyks.org/depts/sustainability>

Contact:

Eileen Horn, Sustainability Coordinator

ehorn@lawrenceks.org

ehorn@douglas-county.com

785-330-3121

