

Quarterly Neighborhood Performance Report - Quarter Three (February-April) Due May. 10

Neighborhood__ East Lawrence

Barry Shalinsky

5/10/2021

Phone Number/Email _____ 785-330-5067 ELNAPrez@yahoo.com

Each Neighborhood is required to have at least quarterly meetings. (minutes must be attached.)

Meeting Date #1 2/8/2021

Minutes Attached? yes

Meeting Date #2 3/8/2021

Minutes Attached? yes

Meeting Date #3 4/12/2021

Minutes Attached? no - not approved yet

How was the neighborhood notified of the meeting(s)? (check all that apply)

email yes

newsletter yes

other announcement? (please specify) social media

Officer elections this quarter? (if so, attach list of new officers)

Yes

No xx

Each Neighborhood is encouraged to produce regular newsletters.

Date of Newsletter Mar-21

Copy Attached? (required) yes

Also to be attached: _____

Neighborhood activity list for the quarter, including method of notification as well as estimated attendance. (Required) see attached

Best practices in regard to neighborhood events that can be shared with other neighborhood associations. Provide information on outreach, event, and outcome. (recommended) We continue to meet via Zoom and publicize our meetings via print, email and social media. Our attendance is in the 15-25 range, and typically includes our State Rep, State Senator and a City Commissioner. Our meetings are very substantive. We worked very well with several departments and individuals at City Hall, particularly those who are collaborative in their approach, on parks and rec, transit, brick infrastructure and other matters. We held a socially distanced drive in movie night at a local church with films having East Lawrence subject matter and/or made by East Lawrence filmmakers. In light of reduced CDBG budget allocation, we asked our neighbors and neighborhood businesses to help us out, and received over \$1000 in contributions and newsletter ads. Best practices: trust your friends and don't waste your energy chasing rainbows.

Any other information your neighborhood association feels will be information that will help to provide a clear view of your neighborhood associations accomplishments. (recommended) We are strong, resilient and relevant. Our president had an excellent hour long meeting with the City Manager in April, during which the City Manager informed us that East Lawrence would be the first neighborhood slated for an update to our neighborhood plan once new planning staff is in place, a long time goal. ELNA began work on applying for 501(c)(3) status which will assist in our efforts to achieve more diversification of funding sources. We anticipate completing that process during the 4th qtr.

Meeting Agenda

Register for Zoom Meeting

Introductions and check-ins (15 min)

Feb Agenda / December, January Minutes

Presentation from The Willow (25 min)

Information items (30 min)

Community Fridge Proposal - Sakthi K

Lawrence Association of Neighborhoods

Historic Resources Commission

Lawrence Preservation Alliance

Planning Commission

City Commission

Safe Neighborhood Speeds Campaign

Sidewalk Inspection program

Brick streets and sidewalks city policies

Covid Vaccination info / outreach

Covid Mutual Aid / Kansas Beats the Virus Grant

CDBG Grant Application

Wildlife Conservation Area restoration and cleanup

The BIG Event

New York School / LMCMS updates

Discussion / Action Items (30 min)

Grant Seeking -- Douglas County Heritage Grant for Native Land signage

Accessory Dwelling Units in RS-5 Zones

Funding, including 501c3

Officer / Staff Reports & Miscellaneous items (15 min)

President

Vice-President

Treasurer

Coordinator

Adjourn

Note about our meetings: We appreciate our neighborhood meetings as an opportunity to learn more about what is happening in our neighborhood. For this reason we request that our interactions reflect our pursuit of knowledge and assume that we are all in it for these same reasons. Assume good intent on everyone's part. We will make every effort to recognize everyone's viewpoints.

For March -- Another East Side Free-idge, Lawrence Transit Planners

ELNA Minutes – February 8, 2021

Present: Phil Collison, Josh Davis, Will Averill, Lane Eisenbart, Aaron Paden, Sakthi Kasthuriengan, Barry Shalinsky, KT Walsh, Pam Blackburn, Desmond Granger, Barry Shalinsky, KT Walsh, Pam Blackburn, Sacie Lamberton, Brenda Nunez, Frank Janzen, Suzan Hampton, Boog Highberger, Joe Carpenter

Meeting called to order by Barry. KT moved and Phil seconded to approve the agenda and the December, January minutes. Motion passed.

Will and Desmond from The Willow gave a presentation on their organization. The Willow was founded in 1976 as they began offering shelter to abused women. Services today include all individuals who are abused, including trans people and men. They operate in Franklin, Jefferson, and Douglas county. The Willow is about to open their 2nd shelter. It was started as crisis intervention. Services are now wider and include emergency shelter. The new shelter will provide 9 more bedrooms for a total of 20 beds. The duration of stay will increase from 30 to 90 days to transition out of the situation. Allows clients to find employment, documentation and housing. 80% of people in transitional housing move to regular housing. Tenants to homeowners manages the housing. Willow does referrals. Services also include Human trafficking survivors program, court advocacy program goes to dockets and sit/support survivors thru the process. Community advocacy assistance helps with rent and other necessary items. They arrange for transportation to appointments and job interviews. They also have services for youth transitioning out of foster care. A transition house for these youth has been opened giving them a place to live for up to 2 years.

The willow is funded by federal and state grants. 15 to 20% of their funding is from individual or corporate donations. The city and county also contribute. There is a staff of 30, 2/3 are direct staff and 1/3 are community outreach.

Sakthi K talked about expanding the neighborhood refrigerator programs. He is looking for a program similar to Sunrise but more accessible. There is now a refrigerator at KU and downtown, with more places to come. Looking for ideas for where to put one in other places, like East Lawrence. They are recovering extra food from restaurants to stock the refrigerators.

Key Boards

LAN: next meeting is in a couple of days. Phil will forward the results

HRC: Memorial by swimming pool. Juneteenth was discussed.

LPA: Will be at next LAN meeting. Reaching to more neighborhoods to recognize people making good improvements to their homes.

Safe Neighborhood Speeds Campaign will be starting very soon.

Sidewalk Inspection program: this year there are some sidewalks in our neighborhood. Generally they are targeting sidewalks used by students going to middle school and NYE. No brick sidewalks are involved.

Phil, Sacie, Barry meeting with city hall about how / where to repair brick streets and sidewalks.

Covid Vaccination info / outreach: Sr center available to assist people without computer access to help people get on the list.

CDBG Grant Application submitted.

Wildlife Conservation Area restoration and cleanup: down by river, N of train station, invasive species to be removed. Trees to be planted.

The BIG Event: any ideas for projects? KU volunteers in april

New York School / LMCMS updates: any one interested in attending meetings?

Grant Seeking: Douglas County Heritage Grant

Accessory Dwelling Units in RS-5 Zones: Planning is investigating allowing ADUs on RS5 lots. Rules are that the owner must live in one unit. ADU cannot be more larger than the current building. Must have 6000 sq ft lot. Need to be ready for when this topic is hitting committees.

Douglas county Heritage grant: Native American recognition, signage. Who was here before? And how do we find out? Paid consultant to local tribe(s) plus artwork for signage.

Kaw rock to be returned to the Kaw nation. 1st step is do research of what should be done. Lane, Dave, KT and Phil to help organize a meeting.

Funding, including 501c3: Boog volunteered to help with organization of steps. Filing fee is \$260. Kt moves for Boog to file paper work for ELNA becoming 501c3 in April. Aaron 2nds. Filing fee should be < 500. Motion passed.

President: Met with Michael Almon, VP of Brook Creek. ELNA March meeting speaker will be from Lawrence transit on bus route changes in august.

Treasurer \$3997.38, paypal: 563.32; \$11 from recycling

Coordinator: talking to Trinity Lutheran church for a film festival in March in the parking lot. Needs Assessment : more than 20 people responded. They all indicated that they read the paper newsletter

Meeting adjourned.

East Lawrence Neighborhood Association

Meeting Agenda

Monday Mar 8th, 2021 • 7:00pm-9:00pm

Join Zoom Meeting (no pre-registration

needed):<https://us02web.zoom.us/j/83676498495?pwd=UTN2OFZBYnVMeHJVK3VKQzIWMmI4Zz09>

Meeting ID: 836 7649 8495 Passcode: 182617 Find your local number:

<https://us02web.zoom.us/j/83676498495?pwd=UTN2OFZBYnVMeHJVK3VKQzIWMmI4Zz09> Introductions and check-ins (15 min)

Approvals (5 min)

March Agenda / February Minutes

Presentation from Lawrence Transit (20 min)

Information items (45 min)

Polk Oil Building remodel and site plan - Scott Trettel

Community Free-edge Proposal - Sakthi K

City Commission - Budget, Neighborhood Plan, ELNA operating funds

Lawrence Association of Neighborhoods

Historic Resources Commission

Lawrence Preservation Alliance

Planning Commission

Safe Neighborhood Speeds Campaign

Sidewalk Inspection program

Brick streets and sidewalks city policies

Support for National Arbor Day Foundation Street Tree Planting Grant

Wildlife Conservation Area restoration and cleanup

The BIG Event

New York School / LMCMS updates

Grant Seeking -- Douglas County Heritage Grant regarding Native Lands

Discussion / Action Items (15 min)

East Lawrence Movie Night

Funding, including 501c3

Officer / Staff Reports & Miscellaneous items (10 min)

President

Vice-President

Treasurer

Coordinator

Adjourn

Note about our meetings: We appreciate our neighborhood meetings as an opportunity to learn more about what is happening in our neighborhood. For this reason we request that our interactions reflect our pursuit of knowledge and assume that we are all in it for these same reasons. Assume good intent on everyone's part. We will make every effort to recognize everyone's viewpoints.

April Agenda Note: Marlo Angell and La Yada film

1. ELNA Minutes – March 8, 2021

Present: Phil Collison, Pam Blackburn, Felice Levergne, KT Walsh, Adam Weigel, Sakthi, Barry Shalinsky, Anna McCoy, Boog Highberger, Lisa Larsen, Brenda Nunez, Joe Bickford, Ellen Paulson, Dave Loewenstein

Meeting called to order by Barry. Introductions were done and agenda approved. No minutes were available.

Felice from Lawrence Transit talked about upcoming route changes, effective August 1st. These changes are not due to the route redesigns upcoming in 2022. The new housing in the WAD has increased workers & populations. The main route will no longer go on Connecticut & a lot of 11th. The new route will service Poehler & Penn St lofts. Transit is anticipating greater use with the increased housing in the area. There a discussion about whether the Wishing Bench should be a part of this new bus stop. The existing bench is on the NW corner of 9th st and Delaware and needs to be moved for Tony K's development. The bus stop will be on Delaware just north of 9th. Transit asked about incorporating the Wishing bench as the functional bus stop. Adam would need to get easement most likely and the bus stop would need to be ADA accessible allowing 4 ft x 2.5 ft space for wheelchairs. It was asked if there would there be rules surrounding what is left there? Choice of regular bus shelter or wishing bench.

Sakthi gave an update on Lawrence Freedgin Kansas. They just got refrigerators donated and are working on getting the downtown refrigerator set up. Currently filling up the Sunrise site. Will be contacting NYE to see if their site is possible or contact Just Food for ideas.

Barry brought up there is a proposed remodel at 9th & Penn, the Polk Oil Building. It will be either office or commercial. It will connect street to building in alley.

City Commission: Lisa Larsen gave an update. CDBG funding will most likely not be available. Question was asked if there are other funding sources? Lisa feels money should be coming from general fund. Comparing social services to neighborhoods is not easy. More conversations to follow as budget talks continue. She recommends continuing to advocate thru the commissioners for this change.

Neighbor plan update. Planning is adding more staff. Last fall, Lisa proposed a planner 2 & a planner 1. They are committed to completing 2 neighborhood plans and also work on 2040 plans. Community engagement person needed to set up policies on how to interface with communities. Planning is not always communicating with neighborhoods.

HRC: discussion of Argana restaurant sign

LPA: raised \$\$ last year for St Luke's restoration. Raven & Dusty Bookshelf are taking donations for St Luke's bookshelf

Safe neighborhood speeds campaign: new speed limits signs have been seen west of Iowa. Just now beginning to show up in East Lawrence.

Sidewalk inspection program: no policies have been developed / adopted for brick sidewalks. ELNA, Pickney, and OWL will have a meeting to help write policy with staff support on historic sidewalks & streets.

Parks & Rec approached us in support of National Arbor Day Foundation tree planting grant. This will help them replace trees that have died. We sent in letter. Hoping it will supplement existing funds for tree replacement in neighborhood.

Wildlife conservation area restoration and cleanup: Friends of the Kaw & Big Event doing river cleanup on Big Event day, 4/24. Cutting out the honey suckle will happen later in summer and be replanting with native plants.

Local schools are enrolling now. Pick up after your dogs!

Movie Night: Sat Mar 27, Movies, Wishing Bench, Facing East, Ks River Kings & Langston's Lawrence. Unclear about concessions. Health dept says 200 can come to event. All must stay in their car, maintaining social distance and be masked. No more than 25 people out of their car at any time.

RI & housing authority properties: 1200 blk dumpster overflowing with trash. Gets blown around. Email'd housing authority. Not getting much response or action. Are there other problem dumpsters in the neighborhood?

Donate button on web site to contribute to elna. We need to sell more ads.

Meeting adjourned.

Will and Desmond from The Willow gave a presentation on their organization. The Willow was founded in 1976 as they began offering shelter to abused women. Services today include all individuals who are abused, including trans and men. They operate in Franklin, Jefferson, and Douglas county. The Willow is about to open their 2nd shelter. It was started as crisis intervention. Services are now wider and include emergency shelter. The new shelter will provide 9 more bedrooms for a total of 20 beds. The duration of stay will increase from 30 to 90 days to transition out of the situation. Allows them to find employment, documentation and housing. 80% of people in transitional housing move to regular housing. Tenants to homeowners manages the housing. Willow does referrals. Services also include Human trafficking survivors program, court advocacy program goes to dockets and sit/support survivors thru the process. Community advocacy assistance helps with rent and other necessary items. They arrange for transportation to appointments and job interviews. They also have services for youth transitioning out of foster care. A transition house for these youth has been opened giving them a place to live for up to 2 years.

The willow is funded by federal and state grants. 15 to 20% of their funding is from individual or corporate donations. The city and county also contribute. There is a staff of 30, 2/3 are direct staff and 1/3 are community outreach.

Sakthi K talked about expanding the neighborhood refrigerator programs. He is looking for a program similar to Sunrise but more accessible. There is now a refrigerator at KU and downtown, with more places to come. Looking for ideas for where to put one in other places, like East Lawrence. They are recovering extra food from restaurants to stock the refrigerators.

Key Boards

LAN: next meeting is in a couple of days. Phil will forward the results

HRC: Memorial by swimming pool. Juneteenth was discussed.

LPA: Will be at next LAN meeting. Reaching to more neighborhoods to recognize people making good improvements to their homes.

Safe Neighborhood Speeds Campaign will be starting very soon.

Sidewalk Inspection program: this year there are some sidewalks in our neighborhood. Generally they are targeting sidewalks used by students going to middle school and NYE. No brick sidewalks are involved.

Phil, Sacie, Barry meeting with city hall about how / where to repair brick streets and sidewalks.

Covid Vaccination info / outreach: Sr center available to assist people without computer access to help people get on the list.

CDBG Grant Application submitted.

Wildlife Conservation Area restoration and cleanup: down by river, N of train station, invasive species to be removed. Trees to be planted.

The BIG Event: any ideas for projects? KU volunteers in april

New York School / LMCMS updates: any one interested in attending

Grant Seeking: Douglas County Heritage Grant for Native Land signage

Accessory Dwelling Units in RS-5 Zones: Planning is investigating allowing ADUs on RS5 lots. Rules are that the owner must live in one unit. ADU cannot be more larger than the current building. Must have 6000 sq ft lot. Need to be ready for when this topic is hitting committees.

Douglas county grant: Native American recognition, signage. Who was here before? And how do we find out? Paid consultanting to local tribe plus art work for signage.

Kaw rock to be returned to the Kaw nation. 1st step is do research of what should be done. Lane, Dave, KT and Phil to help organize meeting.

Funding, including 501c3: Boog volunteered to help with organization of steps. Filing fee is \$260. Kt moves for Boog to file paper work for ELNA become 501c3 in April. Aaron 2nds. Filing fee should be < 500. Motion passed.

President: Met with Michael Almon, VP of Brook Creek. ELNA March meeting speaker will be from Lawrence transit on bus route changes in august.

Treasurer \$3997.38, paypa: 563.32; \$11 from recycling

Coordinator: talking to Trinity Lutheran church for film festival in March in the parking lot. Needs Assessment : more than 20 people responded. They were all paper newsletter responders;

Meeting adjourned.

East Lawrence Neighborhood Association

Meeting Agenda

Monday April 12th, 2021 • 7:00pm-9:00pm

Join Zoom Meeting (no pre-registration needed):

<https://us02web.zoom.us/j/89287596267?pwd=WHBveFV1OW0vWU1DOXFxcWJXeVZWdz09>

Meeting ID: 892 8759 6267

Passcode: 420827

Introductions and check-ins (10 min)

Approvals (5 min)

April Agenda / February and March Minutes

Presentation from Marlo Angell, film maker of LA YARDA (20 min)

Information items (45 min)

Depot Parking Lot construction - discovery of brick surface

Update: Community Free-edge Proposal

City Commission - Budget, Neighborhood Plan, ELNA operating funds

Lawrence Association of Neighborhoods

Historic Resources Commission

Lawrence Preservation Alliance

Planning Commission

Blowing / overflowing Trash from Dumpsters at LDCHA property and elsewhere

Sidewalk Inspection program

Brick streets and sidewalks city policies

Followup: National Arbor Day Foundation Street Tree Planting Grant

Wildlife Conservation Area restoration and cleanup

The BIG Event

New York School / LMCMS updates

Native Lands updates

Swimming Pool kiosk regarding history of discrimination in Lawrence

Discussion / Action Items (20 min)

The Future of the Wishing Bench

Funding, including 501c3

Officer / Staff Reports & Miscellaneous items (10 min)

President

Vice-President

Treasurer

Coordinator

Adjourn

Note about our meetings: We appreciate our neighborhood meetings as an opportunity to learn more about what is happening in our neighborhood. For this reason we request that our interactions reflect our pursuit of knowledge and assume that we are all in it for these same reasons. Assume good intent on everyone's part. We will make every effort to recognize everyone's viewpoints.

ELNA Minutes – April 12, 2021

Present: Phil Collison, Pam Blackburn, Marlo Angell, Aaron Paden, Lane Eisenbart, KT Walsh, Barry Shalinsky, Anna McCoy, Boog Highberger, Dave Loewenstein, Ellen Paulsen, Brenda Nunez, Josh Davis, Joe Bickford, Sacie Lambertson.

Meeting called to order by Barry. Introductions were done and agenda approved. March minutes were approved (KT moved and Sacie 2nd).

La Yorda neighborhood documentary has received grant funding. They are currently doing research and collecting oral history. It is focused the 1920 – 1950 era when Mexican American families came to work on the railroad. This was common in so many cities in Kansas and even nationally. The German POW camp was nearby and was integrated into neighborhood. Scholarly interviews starting. They are planning a 15 minute documentary which came out of wishing bench documentary. A well and some fencing still remained.

The northeast Depot parking lot was to be constructed as part of renovation. City uncovered large expanse of bricks in the area to be made into parking lot. ELNA visited site w/ city and suggested that bricks be incorporated into design. City is reviewing request and may be feasible without many change orders. One can see where old depot was (that was thrown into river) and floor of freight depot.

Community Free-edge: April 5 officially opened. Soliciting food for pantry & money donations.

Lan: 3/17 meeting, the police review group was there.

HRC: 1306 NH new addition: asking for it to be allowed to remain a duplex. 1308 NH wants to build garage with upstairs for studio (no kitchen, bath).

Lawrence Preservation Alliance : doing survey on how do LPA impacts city.

Blowing / overflowing Dumpsters & Trash: 1200 RI. City supposed to be doing 2x weekly pickups. The city cannot do a larger dumpster, no one can explain why or not responding. Everyone should be monitoring trash situation in neighborhood. We will probably see this as more of an issue as more apartments are built. It appears it is a Landlord issue (housing authority) by not providing adequate trash disposal containers, not a neighbors'.

Sidewalk inspection: no complaints heard from neighborhood. No brick sidewalks involved.

Brick streets & sidewalks policies: no new news. Meetings have occurred but nothing going forward. Barry contacted parks and recs: no update on tree planting grant.

The big event is coming up on 4/17. Our river cleanup is this weekend. Friends of the Kaw cleaning on 4/24.

Native Lands Updates: Robinson Park. Looking for History of park stories & it's movement to Lawrence. Geologist inspecting rock to verify condition & how it was installed.

Swimming Pool Kiosk regarding discrimination in Lawrence has been installed. Go look at it. History of integrated swimming pool and how it plays into our civil rights history.

ELNA was not recommended for CDBG funding. City says to find alternative funds for \$1300 from general fund. City is looking at 2022 budget for funding of 4 neighborhood associations. A spirited discussion followed on basic CDBG rules and their changes to rules. Does it make sense for ELNA to pursue 501(c)(3) status?

Wishing bench: should it be a city stop? Phil moves that ELNA does not want the wishing bench to be part of a formal bus stop. We welcome a nice covered modern bus stop on Delaware. The wishing bench should be part of the neighborhood culture and should evolve as it does. Decay is a sign of life. Pam 2nd. Motion passes. Barry will communicate to transit. Wishing bench committee to further investigate when it has to be moved and where it can be placed.

President report: Barry has requested a meeting with city manager.

VP report: There will be open zoom mtg on bus hub. All are welcome to join next Monday.

Treasurer: 4047.57 in bank. 760.27 paypal balance. KVKL may start in July. Other fundraising suggestions are welcome.

Coordinator: apr/may newsletter in progress. New advertisers: Eudora attic storage. Natural Breeze.

Meeting adjourned.

ELNA activities for 3rd Quarter February March April 2021

We usually have at least one rep at all City Commission and all the Historic Resources Commission Meetings during the time frame. Due to Covid protocols, our participation may be in observer only mode for some meetings. We did attend all 3 LAN meetings via Zoom. Every Thursday we send out Thursday E-news to about 400 email subscribers. In January and February, ELNA conducted a neighborhood needs assessment, inviting neighbors to let us know of special needs due to the pandemic and cold weather. We received over 25 responses. We rented our mower three times and our tiller twice during the quarter. ELNA produced and distributed our paper newsletter in March.

2/1/2021 Submitted CDBG Grant Application for 2021-22 – Not being funded.
2/2/2021 Distributed masks from Kansas Beats the Virus
2/3/2021 Participated in City-sponsored Brick Policies Committee meeting (3 ELNA members)
2/4/2021 Networking with Parks & Rec regarding riverfront cleanup planning
2/5/2021 Correspondence / networking regarding Community Fridge proposal
2/8/2021 Correspondence with community partners regarding relocating Wishing Bench
2/8/2021 Regular ELNA meeting with 16 attendees
2/10/2021 Submitted CDBG Quarterly Report
2/10/2021 ELNA members of Brick Policies Committee meet (4 members)
2/11/2021 ELNA and OWLA members of Brick Policies Committee meet to draft policy (7 members)
2/15/2021 Communication with owner regarding construction and uses at 846 Pennsylvania
2/17/2021 LAN meeting (1 ELNA rep, 17 attendees)
2/25/2021 Sent letter to National Arbor Day Foundation in support of City grant application
2/25/2021 ELNA and OWLA members of Brick Policies Committee meet to draft policy
3/4/2021 Participated in City-sponsored Brick Policies Committee meeting (3 ELNA, 10 total)
3/5/2021 Communication with Lawrence Transit regarding proposed route changes
3/7/2021 Communication with neighbors, LDC Housing Auth and Sanitation re blowing trash
3/8/2021 Regular ELNA meeting with 14 attendees
3/8/2021 Respond to inquiry from environmental activists regarding riverfront cleanup
3/17/2021 LAN meeting (1 ELNA rep, 17 attendees)
3/26/2021 East Lawrence Drive-in Movie Night at Trinity Lutheran Church
3/29/2021 Communication with neighbors, LDC Housing Auth and Sanitation re blowing trash
4/1/2021 Participated in City-sponsored Brick Policies Committee meeting (3 ELNA members)
4/6/2021 Met with City Engineer and 8 stakeholders re brick surface at depot parking lot site
4/12/2021 Regular ELNA meeting with 14 attendees
4/15/2021 Correspondence with Lawrence Transit regarding bus shelters in East Lawrence
4/16/2021 Meeting between City Manager and ELNA President
4/19/2021 Communication with neighbors, LDC Housing Auth and Sanitation re blowing trash
4/20/2021 Letter and public comment to City Commission regarding CDBG budgeting process
4/19/2021 Participated in Multi-Modal Transfer Facility meeting (2 ELNA members)
4/21/2021 LAN meeting (1 ELNA rep, 18 attendees)
4/21/2021 Correspondence with Jungle House regarding lighting improvements
4/24/2021 Correspondence with attorney for developer of 8th & Pennsylvania project
4/28/2021 ELNA began work on 501(c)(3) application (7 active participants in the process)

East Lawrence News

East Lawrence Neighborhood Association
P.O. Box 442393 Lawrence, Kansas - eastlawrence@yahoo.com
www.eastlawrence.com

May 2021



ELNA

General Meeting

May 10th 7-9pm

Online via Zoom

Agenda

always available at <http://www.eastlawrence.com/meetings>
Email Phil at phil@pcollision.com
for zoom link info

Board Contacts

Barry Shalinsky, President,
elnaprez@yahoo.com

KT Walsh, Vice President,
kathleenbridgetwalsh052@gmail.com

Pam Blackburn, Secretary
pamblackburn55@gmail.com

Aaron Paden, Treasurer,
aaronpaden@gmail.com

Phil Collision,
phil@pcollision.com

Dave Loewenstein,
dloewenstein@hotmail.com

Joshua Davis,
jid12345@gmail.com

Sacie Lambertson
sacie.lambertson@gmail.com

Brenda Nunez,
brendajnunez@hotmail.com

Suzan Hampton,
suzanhampton@gmail.com

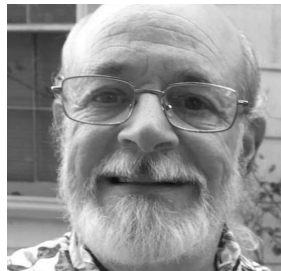
Boog Highberger,
mrboog@att.net

Anna McCoy,
pannam@sunflower.com

ELNA Contacts

Lane Eisenbart, Coordinator
eastlawrence@yahoo.com 785-843-8098

www.eastlawrence.com

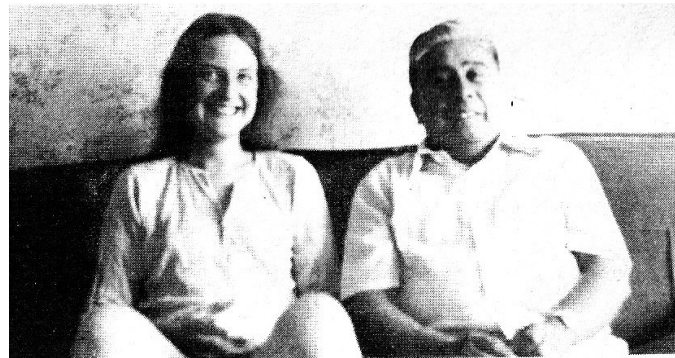


From the President

Barry Shalinsky

Community Development Block Grant funding for East Lawrence Neighborhood Association operations and communications has come to end, fueled by a new grant review process that minimizes community involvement. For over 40 years, a citizen advisory body made recommendations to the City Commission on how CDBG money should be spent.

The meetings were open to the public, and the committee received public testimony before making recommendations. The committee discussed, debated and voted on recommendations, all in public. There was transparency.



Long time residents of East Lawrence will recognize these two local legends. Shelley Miller and Val Romero were Pennsylvania Street neighbors who served together as East Lawrence's representatives to the City's Community Development Block Grant Advisory Board.

Last funding year, the City did away with that open process and replaced it with an anonymous staff review process, with no pre-review public input, no transparency and no accountability. Decisions are based on a rating "matrix" that was set up with criteria that disadvantage neighborhood associations. This year, one anonymous City Hall bean counter actually rated ELNA with zero points on five out of thirteen rating criteria. Not surprisingly, each of the neighborhood associations, including ELNA, was zero funded.

Yet all is not doom and gloom. ELNA has received over \$1000 in contributions and newsletter ad revenue since our last newsletter. City Commission tentatively voted to fund us at \$2,000 for August through December 2021 from general revenue, with an indication that there might be more next year. If you feel so inclined, please contact the City and let them know you value the work of Neighborhood Associations, and ask that a budget item be added. You can find email addresses for the City Manager and Commissioners on the City website. However, ELNA is taking no chances. We will be filing 501(c)(3) paperwork so we can start pursuing other funding opportunities. If you value what we do, please hit the "donate" button on www.eastlawrence.com or send us a check at PO Box 442393, Lawrence, KS 66044-2393. Sincere thanks to all who have helped!!

Meanwhile, ELNA continues to do what we do best – agitate, advocate, educate, communicate, collaborate and celebrate, just as Shelley used to do so many years ago. She was the self-described "ever vigilant neighborhood bitch" who worked hard and knew how to have a good time!

see President pg. 2

President . . .

- After years at the top of our agenda, the City Manager told ELNA that East Lawrence will be the first neighborhood that new Planning staff will work with on updating our Neighborhood Plan. This is huge!
- Parks and Rec is sharing plans for a new splash pad at Burroughs Creek Park at the 15th Street intersection with the Trail that is slated to be built this summer.
- When good historic brick pavement was found in the footprint of a new parking lot southeast of the Amtrak station, work was immediately stopped to see whether the brick could be incorporated into the parking lot. Neighbors and preservation architects are being consulted.
- ELNA participates in a work group with city staff and other neighborhoods to write a city policy for the preservation of brick streets and sidewalks to promote a historic streetscape while ensuring safe paths of travel.
- East Lawrence Drive-in Movie Night was so successful that we are looking at more fun ways to safely gather for fun this summer.
- Every Thursday like clockwork, our e-news goes out, and every two months, you receive this newsletter. Kudos to our awesome Neighborhood Coordinator who makes it happen!

City Seeks History & Photos of Sacred Red Boulder

-- *City of Lawrence*

The City of Lawrence is undergoing work to return In'zhúje'waxóbe, the sacred red boulder currently located in Robinson Park, to the Kaw Nation. During their meeting on March 16, 2021, the Lawrence City Commission adopted a joint resolution with Douglas County offering a formal apology on behalf of the City and County to the people of the Kaw Nation for the appropriation of In'zhúje'waxóbe and agreeing to its unconditional return.

As part of the work to return In'zhúje'waxóbe, the City is seeking historical archives from the community that may help in understanding how the sacred boulder was brought to Lawrence and installed in its current location. In'zhúje'waxóbe came to Lawrence via the Santa Fe railroad during either the late hours of September 18, 1929, or the early hours of September 19, 1929.

Historical archives are needed to better understand the installation of the rock in Robinson Park as well as to see the boulder in its natural form, prior to the construction of the base. Historical archives that may help with this understanding include photos, drawings, journal entries or any other timely record of In'zhúje'waxóbe.

Anyone with information that they believe could be helpful is asked to contact Ashley Chávez with the City Attorney's Office: 785-832-3475 | AsChavez@lawrenceks.org.

New York School News

The first week of May -- May 3rd-7th -- is Teacher Appreciation Week! All students, families, and neighbors are invited to show New York teachers that they are loved and appreciated. Choose a day, or two, or all five! to participate. Bring items to your teachers or the front office of the school.

Monday May 3rd -- Teachers Help Us Bloom! Bring your teacher a flower -- fresh, fake, or hand drawn -- or something with a floral print.

Tuesday May 4th -- Teachers Are Noteworthy! Write or draw your teacher a note explaining how they've made a difference to you.

Wednesday May 5th -- My Teacher Is a Treat! Treat your teacher to their favorite snack, drink, or homemade item.

Thursday May 6th -- Teachers Are Awesome to the Core! Bring an apple themed gift, a caramel apple, or just an apple.

Friday May 7th -- Teachers Help COLOR Our World! Wear your teacher's favorite color.

The New York School Garden Club will need help caring for the garden this summer. Watch the club's Facebook page -- search for New York Elementary Garden discussion group -- for a sign up when it's ready. Care for the garden might include watering, weeding, and even harvesting!

New La Yarda Film

Filmmakers Lourdes Kalusha-Aguirre and Marlo Angell are working on a new short documentary about the East Lawrence neighborhood of La Yarda and are looking for people to interview, photos to include and stories to share. This short film about the Mexican American neighborhood created to house railroad workers from 1920-51 is made possible by a grant from Humanities Kansas and support from The Percolator Lawrence. Email Lourdes & Marlo at layardafilm@gmail.com to connect!



TOM HARPER

CRS, ABR, GRI, e-PRO, REALTOR®
tomharper@stephensre.com
Tom-Harper.com
785-218-6351

Find me on Instagram
[@Lawrencemodern](https://www.instagram.com/Lawrencemodern)


STEPHENS
REAL ESTATE

Sunrise News

Sunrise Family Community Event!

May 14, 5:30--8:30 PM

Trivedi Wine LLC, 1826 E 1150 Rd, Lawrence, KS 66049

Sunrise Project staff and Board of Directors invite you to an outdoor, socially distanced family event at Trivedi Wine. Join us at this fun event to mingle and get to know our Sunrise Board. The purchase of your ticket to this event supports our programming which includes: weekly community meals; free food gardens and orchards; community pantry; and youth programs!

Each ticket is \$20 and it gets you:

Admission of up to two children (ages 18 and under)

Live music

Spring weather on a local farm

Safe, socially distanced community fun!

Live music by BOBEON and The T

Enjoy an evening of classic rock and country with this local fun-loving trio. Guaranteed to get your toes tapping with songs you know, these talented musicians have years of experience performing together and with various other bands in and around the Lawrence area. They are graciously volunteering their time and talents for the event!

Food Provided by Amber Scullery Food Truck

A delicious onsite food truck will be available for purchase for the duration of the event.

Bring your MASKS and your LAWN CHAIR for a socially distanced good time!

.....

It is time to ACTIVATE YOUR VOICE:

Courageous Leadership Conference

May 15, 10:00 AM — 3:00 PM CDT

1501 Larnard Ave. Lawrence, KS 66044

Sunrise Project's 2021 Activate Your Voice program will be a day of active learning and connection. We welcome Crystal Rozelle-Bennett as our facilitator to guide us on a Courageous Leadership journey that centers the experiences of Black, Indigenous and People of Color (BIPOC).

The Courageous Leadership Conference will take place outside, for a COVID-safe environment that enables us to connect face-to-face.

Childcare and transportation provided if needed.

About Crystal Bennett: Crystal Rozelle-Bennett, LMSW is the founder and CEO of THRYVE, LLC. Ms. Bennett brings over 20 years of experience with youth and families to the leadership of THRYVE.

More information about Crystal Rozelle-Bennet can be found on our Facebook event. (Just search the Sunrise Facebook page).

This program is FREE and OPEN to all, ages 18+.

We welcome people of all genders, backgrounds, and racial-ethnic identities; however, BIPOC folks will be prioritized for enrollment. This program is capped at 20 participants, our staff will follow up to confirm your spot.

This session of Activate Your Voice is made possible by a Racial Equity grant through Douglas County United Way.

Sign up today by filling out the form listed in the facebook event description.

E-mail melissa@sunriseprojectks.org or call 785-865-1618 to get on the list or to get more information.

Crisis Pet Retention Fund

In recent months the Lawrence Humane Society has had a significant increase in the number of people coming to us to surrender their pets due to job loss, housing instability, and/or financial challenges in caring for pets. Our hope is that the CPR Fund can help keep people and pets together and not add one more loss or burden to the folks in our community.

Some examples of things the CPR Fund can assist with include (but aren't limited to):

Pet deposits/pet rent

Essential pet supplies such as food, crates, collars, litter, etc.

Wellness medical care such as spay/neuter surgeries, vaccinations, etc.

Emergency vet care

Behavior consulting

Temporary boarding

Elina Alterman MSW, MPH

Senior Manager of Administration

Lawrence Humane Society

1805 E. 19th Street | Lawrence, KS 66046

Office: 785.843.6835 Direct: 785.843.0499

elalterman@lawrencehumane.org

ELNA Meetings 2021

The ELNA Board meets on the Second Monday of each month. Traditionally, we've met in the New York School library, but we'll continue to meet via zoom for the foreseeable future. The link to the zoom meeting is always posted at the top of the agenda, and the agenda can always be found at <http://www.eastlawrence.com/meetings/>. If you have any trouble finding the link, or getting access to a meeting, just email Phil phil@pcollison.com. We meet from 7-9pm.

Here's a list of meeting dates for the rest of 2021:

2ND MONDAYS May 10th, June 14th, July 12th, August 9th, September 13th, October 11th, November 8th, December 13th. We will have Board declarations in October, and Annual Meeting and Board Elections in November.

SPECIAL NOTICE:

ELNA will vote on minor technical changes to our bylaws at our zoom meeting on June 14, 2021. These changes will make us eligible to apply for 501(c)(3) non-profit status! The proposed amendments will be posted on www.eastlawrence.com by mid-May.

Hang 12 + Percolator TRAFFIC JAM!

Outdoor, interactive art show in the shared alley between 9th and 10th of New Hampshire street at the end of May. Traffic Jam will be on Saturday, May 29th from 6-10 pm and the rain date will be June 5th. It will include local artists, bands, and some of our own work! Plenty of sanitation stations will be provided, with masks and social distancing required. We are hosting it with help from the Percolator.

Plus ELNA Merch!

Lane will set up at the Traffic Jam event on Saturday May 29th with the ELNA merch. We've got hoodies, tees (in women's, unisex, and kids sizes,) possum lady tanks and even a few coozies. Clothing prices range from \$25 to \$12 and \$3 for the coozies. We'll be able to take cash, check, and card.

2021 Compost & Woodchip City-Load Events

The City offers City-load days at the Compost Facility once a month during peak season to allow customers to have compost and/or mulch loaded into their trucks or trailers by City staff using loading equipment. All Compost Facility Guidelines are still in effect during City-load events.

Cost: \$10 per scoop from the city's loading equipment. Once scoop typically fills a pickup truck bed.

2021 City-Load Dates

Saturday, May 1
Saturday, June 5
Saturday, July 3
Saturday, August 7
Saturday, September 4
Saturday, October 2

What is Compost?

Compost consists of decayed organic matter and has been proven to be extremely successful as a natural soil amendment. Lawrence Community Compost is made from the yard trimmings and small woody debris collected curbside on Monday mornings, as well as grass clippings, leaves, and woody debris from some commercial lawn care providers.



EAST LAWRENCE MOWING

SALEM JOHNSON*913-951-7363
SALEMJOHNSON08@GMAIL.COM

New Informational Kiosk at the Pool

There is a new kiosk in front of the Outdoor Aquatic Center on Kentucky Street that tells the story of how Lawrence got its first integrated swimming pool. Before the late 1960s there was no public pool— just segregated private pools. In 1955, a young Black man, Wray Jones, died while swimming in the Kansas River. In 1960, local civil rights activists picketed a segregated pool called the Jayhawk Plunge, which closed rather than open its doors to people of all races. After several failed bond issues and years of work by community organizers and student activists, a bond issue was finally approved in 1967, and the Lawrence Municipal Pool (now the Outdoor Aquatic Center) opened in 1969 at its current location. A recently installed informational kiosk, pictured, was a project of the Lawrence NAACP History committee, with support and financial assistance from the Lawrence Parks and Recreation Department, the Watkins Museum of History, and the friends of Dick Raney.



PROFESSIONAL REMODELERS

"Make Room For Your Life"

CHANGE YOUR HOME, NOT YOUR ADDRESS!

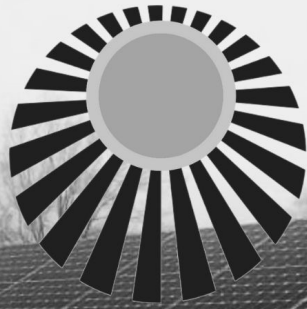
- ✦ KITCHENS & BATHS
- ✦ QUARTZ COUNTERTOPS
- ✦ FULL SERVICE PAINTING
- ✦ WHOLE ROOM RENOVATIONS
- ✦ ROOM ADDITIONS
- ✦ BASEMENT FINISHES
- ✦ AND MORE!

VISIT ONLINE OR
CALL US AT:
naturalbreeze.com
785.749.1855

LAWRENCE'S PREMIER REMODELING FIRM

Proudly Serving Lawrence & Surrounding Areas Since 1981

LOCAL RESIDENTIAL SOLAR



RA POWER LLC

DITCH COAL, USE THE SUN

www.rapower.solar 785-727-6036

Volunteer to Plant Flowers for The City of Lawrence

Lawrence Parks and Recreation Department is preparing to break out the spring flowers to beautify Lawrence's parks and public areas. Businesses and teams may see it as a great civic team-building project. Individuals are also encouraged to sign up and assist.

Volunteers ages 16 and up are needed at the following locations and times.

- 8-11 a.m. Tuesday, May 4, Lawrence Union Pacific Depot, 402 N. Second St.
- 1-3 p.m. Tuesday, May 4, N. Second Street | 59 Highway and Riverfront St. LAWRENCE sign and Lawrence Airport
- 8-11 a.m. Saturday, May 8, Downtown Lawrence
- 8-11 a.m. Tuesday, May 11, Town Center and City Hall, 6 East Sixth St.
- 8-11 a.m. Tuesday, May 11, Downtown Lawrence
- 8-11 a.m. Wednesday, May 12, South Park, 1141 Massachusetts St.
- 1-3 p.m. Wednesday, May 12, South Park, 1141 Massachusetts St.
- 8-11 a.m. Thursday, May 13, South Park, 1141 Massachusetts St.
- 1-3 p.m. Thursday, May 13, South Park, 1141 Massachusetts St.
- 9-11 a.m. Wednesday, May 19, Vermont Street Butterfly Garden/Public Library Garden, 707 Vermont St.
- 8-11 a.m. Wednesday, May 26, Downtown Lawrence
- 8-11 a.m. Thursday, May 27, Downtown Lawrence

Volunteers may sign up for multiple times from the days and locations listed above. Locations for meeting the day of volunteering will be provided once participants have signed up. Volunteer opportunities will close as number of volunteers needed are reached. To see the number of volunteers needed for a given date, please consult the online registration form listed below.

To volunteer or for more information, please visit <http://lawrenceks.org/lprd/> flowerplanting or individuals may contact the Parks and Recreation administrative office parksrec@lawrenceks.org, (785) 832-3450.



Neighborhood grocery store Lawrence, Kansas

More old photos from a neighbor on pages 6 & 7.

COVID Vaccine News

According to our Douglas County COVID Response Team, our county's vaccine supply currently outpaces community demand. The need for mass vaccination events is waning, and as such, the final two mass vaccination clinics at the Douglas County Fairgrounds will have been held on April 27-28.

After April 28, there will be a drive-thru site at LMH Health. The drive-through clinic, run by Lawrence-Douglas County Public Health, anticipates being able to provide 200-300 appointments each day with some walk-in appointment availability. You can make an appointment at LDCHealth.org/COVIDVaccine and douglascountyks.org/coronavirus, or just show up. In this phase of vaccination rollout, anyone 16 and older is eligible to receive their shots.

Furthermore, in addition to encouraging everyone to get vaccinated as soon as possible, public health orders still require mask wearing, social distancing, and reduced venue occupancy in all businesses and public venues, County-wide, through the end of May. Anyone with a question about compliance of a local health order can email: phorders@ldchealth.org. And the Douglas County COVID Helpline – 785-864-9000 – is available. This phone number will be answered by trained staff who can help answer questions about vaccination, testing, symptoms, local public health orders and other COVID-19 related questions. The helpline will be available: 8 a.m.-5 p.m. Monday through Friday, and 8 a.m.-noon Saturday.

More information about Douglas County COVID-19 response and recovery efforts can visit douglascountyks.org/coronavirus.

Mower and Tiller for Rent

The grass is green and growing! It's mowing time again! You can rent a mower from ELNA for \$10 per half day. You can also rent a tiller for just \$20 per half day. Please be prepared to provide your own transportation. Contact Phil by call or text 785-843-8098 or email to phil@pcollison.com.

Final Fridays

returns to the Warehouse Arts District

CIDER GALLERY

Mention this advertisement at the Cider Gallery on April 30th or May 28th Final Fridays between 5pm and 9pm and receive \$1 off your first drink!

Events | Offices | Fine Art | Framing Services
Cider Gallery | 810 Pennsylvania Street
cidergallery.com | @cidergallery

BANKRUPTCY

STOP GARNISHMENTS & SILENCE BILL COLLECTORS
SAVE YOUR HOUSE – SAVE YOUR CAR

John Harper – Jerry Harper

We've Been at This Since 1978 & Know How To Help
Call Today for a Free Appointment Tomorrow

785-354-8188

Lawrence Lawyers

We are a debt relief agency that helps people file for relief under the Bankruptcy Code

Long Ago on East Ninth *Former neighbor, Carol Guy, posts old photos of her time on East Ninth on Facebook. She also frequently posts them to the group discussion page "You Know You're From Lawrence Kansas if ..." Carol has granted us permission to print some of her recent shares. Thanks, Carol! More on page 7.*



Butch Proctor shoveling snow in front of our dad's Auto Garage 411 E. 9th (store across the street was Johnsons Service grocery 412 E. 9th Street) -chains on tires

ATTIC STORAGE OF EUDORA

785-542-1515 ~ MOBILE 785-371-6703

Mike Lindeman
Manager

attic-storage.com | 1002 OCL Parkway
atticeudora@atticmgmt.net | Eudora, Ks 66025

Join ELNA for \$1.00

HELP YOUR NEIGHBORHOOD – GET A BIG BANG FOR A BUCK!

Your \$1.00 membership in ELNA and contact information help us represent East Lawrence in our city and county government and to meet the needs of our neighborhood. Support us. Let us support you.

\$100.00 lifetime membership \$5.00 for out-of-neighborhood members
 \$20.00 for in-neighborhood businesses \$10.00 for in-neighborhood non-profits
(Please note personal memberships are per individual, not household.)

Name: _____ Date: _____

Address: _____

Phone: _____ E-mail: _____

- ☐ We print the names of new and returning ELNA members in the ELNA newsletter . Check here if it is okay to print your name.
- ☐ Please add my email to the “Thursday ELNA News” (the weekly enewsletter) email list.

Get even more East Lawrence news!

Like us on Facebook, and follow us on Twitter, too!

Visit our Website eastlawrence.com

ELNA Needs Your Help! Please Volunteer!

Mark what ELNA events / skills you would like to volunteer for:

- ☐ Work Days / Snow Shoveling
- ☐ YART Sale
- ☐ Block Party
- ☐ Adopt-A-Family
- ☐ Music
- ☐ Art
- ☐ Photography
- ☐ Gardening
- ☐ Historic Preservation
- ☐ Serving on the ELNA Board
- ☐ Baking/Cooking
- ☐ Grilling / Concessions
- ☐ Other: _____



Just a quaint ol' Pic. ca1955 -E.9th between Conn.& N.Y.- Makes you think of a scene out of a old western movie. At the time pic. taken folks lived in those buildings. I believe the little square bldg. possibly was a Cafe in earlier yrs. The bldg. in center was a Used Furn. store in this pic. (alley to the right not shown)



across the alley (not pictured) where Johnsons Service grocery had been yrs. ago.



this view shows those bldg.s across 9th from our yard.



Van's Furniture Repair between Conn. and R.I. right by the alley.

East Lawrence Neighborhood Association
PO Box 442393
Lawrence Kansas 66044-2393

PRSRT STD
U.S. POSTAGE
PAID
LAWRENCE, KS
PERMIT #542

This issue of East Lawrence News sponsored by:

Slimmer's Automotive Service is proud to be in East Lawrence



Following a comprehensive rehab of the old
Lawrence Bus Co. building at 901 Delaware St.,
Slimmer's Automotive is now in the neighborhood
and ready to help you with all of your automotive needs.

Specializing in European and Asian automotive
repair and diagnostics, we're here to keep your
car running reliably for years to come.

(785) 843-5606 • slimmerauto.com • 901 Delaware