

FFY 2017 - 2020 Transportation Improvement Program



Adopted: October 5, 2016
Amended: February 23, 2017
Amended: August 17, 2017

Funding Note:

This report was funded in part through grant[s] from the Federal Highway Administration [and Federal Transit Administration], U.S. Department of Transportation. The views and opinions of the authors [or agency] expressed herein do not necessarily state or reflect those of the U. S. Department of Transportation.

Title VI Note:

The L-DC MPO hereby gives public notice that it is the policy of the agency to assure full compliance with Title VI of the Civil Rights Act of 1964, the Civil Rights Restoration Act of 1987, Executive Order 12898 on Environmental Justice, and related statutes and regulations in all programs and activities. Title VI requires that no person in the United States of America shall, on the grounds of race, color, national origin, sex, age, or handicap/disability, be excluded from the participation in, be denied the benefits of, or be otherwise subjected to discrimination under any program or activity for which the L-DC MPO receives federal financial assistance. Any person who believes they have been aggrieved by an unlawful discriminatory practice under Title VI has a right to file a formal complaint with the L-DC MPO. Any such complaint must be in writing and filed with the L-DC MPO's Title VI Coordinator within one hundred and eighty (180) days following the date of the alleged discriminatory occurrence. For more information, or to obtain a Title VI Discriminatory Complaint Form, please see our website at www.lawrenceks.org/MPO.

Table of Contents

MPO SELF-CERTIFICATION.....	II
DEFINITIONS.....	III
INTRODUCTION	1
WHAT IS AN MPO?.....	1
WHAT IS A TIP?	2
<i>The TIP and the MTP.....</i>	<i>3</i>
TIP PUBLIC INVOLVEMENT PROCESS.....	3
PROGRAMMING PROCESS	4
LEGISLATIVE REQUIREMENT	4
PROCESS FOR INCLUDING PROJECTS IN THE TIP	4
REVISIONS TO THE TIP	5
<i>Amendments</i>	<i>5</i>
<i>Administrative Revisions.....</i>	<i>5</i>
FISCAL CONSTRAINT	8
PROJECT FUNDING.....	8
<i>Federal Funds.....</i>	<i>8</i>
<i>State Funds.....</i>	<i>8</i>
<i>Local Funds.....</i>	<i>9</i>
<i>Transit and Paratransit Funds</i>	<i>10</i>
<i>Operation and Maintenance (O&M) Funding.....</i>	<i>11</i>
<i>Year of Expenditure (YOE) Inflation Factor</i>	<i>13</i>
DEMONSTRATION OF FISCAL CONSTRAINT	13
ENVIRONMENTAL JUSTICE REVIEW	15
METHODOLOGY	15
<i>Define Target Populations and Thresholds.....</i>	<i>15</i>
<i>Assess and Analyze Investments in the TIP.....</i>	<i>16</i>
APPENDICES	
APPENDIX A – PLANNING AND ENGINEERING FACTORS FOR PROJECT SELECTION	A-1
APPENDIX B – DEFINITIONS OF MAJOR PROJECTS AND SIGNIFICANT DELAY	B-1
APPENDIX C – PROGRESS ON PREVIOUS TIP PROJECTS	C-1
APPENDIX D – LATEST FEDERAL FISCAL YEAR - LIST OF OBLIGATED PROJECTS.....	D-1
APPENDIX E – TIP PUBLIC PARTICIPATION.....	E-1
APPENDIX F – TIP PROJECT SUBMISSION FORM	F-1
APPENDIX G – FUNDING SUMMARY TABLE.....	G-1
APPENDIX H – SUMMARY OF TIP AMENDMENTS & ADMINISTRATIVE REVISIONS.....	H-1
APPENDIX I – TIP PROJECT LISTINGS	I-1

MPO Self-Certification

The Kansas Department of Transportation (KDOT) and the Lawrence - Douglas County Metropolitan Planning Organization (MPO) certify that the metropolitan transportation planning process is being carried out in accordance with all applicable requirements including the following:

1. 23 U.S.C. 134, 49 U.S.C. 5303, and this subpart; All core documents are current;
2. In nonattainment and maintenance areas, Sections 174 and 176 (c) and (d) of the Clean Air Act, as amended (42 USC 7504, 7506 (c) and (d)) and 40 CFR Part 93;
3. Title VI of the Civil Rights Act of 1964, as amended (42 USC 2000d-1) and 49 CFR Part 21;
4. 49 USC 5332, prohibiting discrimination on the basis of race, color, creed, national origin, sex, or age in employment or business opportunity;
5. Section 1101(b) of the SAFETEA-LU (Pub. L. 109-59) and 49 CFR Part 26 regarding the involvement of disadvantaged business enterprises in USDOT funded projects;
6. 23 CFR Part 230, regarding the implementation of an equal employment opportunity program on Federal and Federal-aid highway construction contracts,
7. The provisions of the Americans with Disabilities Act of 1990 (42 USC 12101 et seq.) and 49 CFR Parts 27, 37, and 38;
8. The Older Americans Act, as amended (42 USC 6101), prohibiting discrimination on the basis of age in programs or activities receiving Federal financial assistance;
9. Section 324 of Title 23 USC regarding the prohibition of discrimination based on gender; and
10. Section 504 of the Rehabilitation Act of 1973 (29 USC 794) and 49 CFR Part 27 regarding discrimination against individuals with disabilities.



Bryan Culver, Chair
Lawrence-Douglas County MPO



Michael J. Moriarty
Bureau Chief of Transportation Planning
Kansas Department of Transportation

Definitions

ADA	ADA- Americans with Disabilities Act of 1990 (P.L. 101-336) and ADA Amendment Act of 2008 (P.L. 110-325)
BAC	Bicycle Advisory Committee
BNSF	Burlington Northern-Santa Fe Railroad
CAP	Capital
CE	Construction Engineering
CFR	Code of Federal Regulations
CIP	Capital Improvement Program
CONST	Construction
CTD	Coordinated Transit District
CTP	Comprehensive Transportation Program
E+C	Existing Plus Committed
EJ	Environmental Justice
EPA	U.S. Environmental Protection Agency
FAA	Federal Aviation Administration
FAST Act	Fixing America's Surface Transportation Act (P.L. 114-94) (Signed by President Obama on December 4, 2015)
FFY	Federal Fiscal Year
FHWA	Federal Highway Administration
FTA	Federal Transit Administration
HOV	High-Occupancy Vehicle Lanes
ITS	Intelligent Transportation Systems
KDOT	Kansas Department of Transportation
KLINK	Kansas Connecting Link Program
KTA	Kansas Turnpike Authority
KU	University of Kansas, Lawrence
KUOW	KU on Wheels Transit Service
LMCMS	Liberty Memorial Central Middle School
LOS	Level of Service
MAP-21	Moving Ahead for Progress in the 21st Century Act (P.L. 112-141) (Signed by President Obama on July 6, 2012)
MPO	Metropolitan Planning Organization, such as the Lawrence-Douglas County Metropolitan Planning Organization
MTP	Metropolitan Transportation Plan
NHS	National Highway System
O & M	Operation and Maintenance
OP	Operating
PE	Preliminary Engineering
PPP	Public Participation Plan
PTAC	Public Transportation Advisory Committee
ROW	Right-of-Way
RRFBs	Rectangular Rapid Flash Beacons
RTAC	Regional Transit Advisory Committee
STBG	Surface Transportation Block Grant Program
STIP	State Transportation Improvement Program
STP	Surface Transportation Program
T2040	Transportation 2040 - the Long Range Transportation Plan for the Lawrence-Douglas County region
TAC	Technical Advisory Committee
TAZ	Traffic Analysis Zone
TDM	Travel Demand Management
TE	Transportation Enhancements
TIP	Transportation Improvement Program
TSM	Transportation System Management
UGA	Urban Growth Area
UP	Union Pacific
UPWP	Unified Planning Work Program
USC	United States Code
UTIL	Utilities
WES	Woodlawn Elementary School

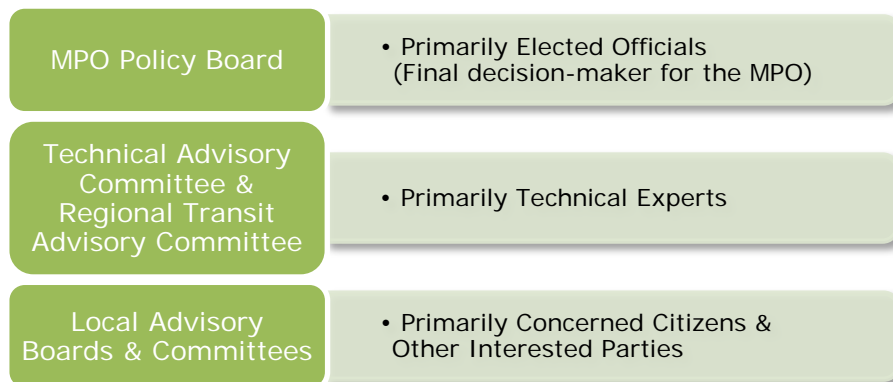
INTRODUCTION

What is an MPO?

A Metropolitan Planning Organization (MPO) is a regional decision making body composed primarily of elected officials from a metropolitan area that is charged with creating a transportation plan and related policy and programming documents. The Lawrence-Douglas County MPO is comprised of a Policy Board composed of mostly elected officials, a Technical Advisory Committee (TAC) made up of transportation and engineering professionals, the MPO Staff, and various other advisory groups that the MPO may form. Figure 1 displays the MPO structure. The MPO develops four core documents that create a regional vision for how the multimodal transportation system will function and grow – now and into the future. The MPO's core documents are the Metropolitan Transportation Plan (MTP), Transportation Improvement Program (TIP), the Unified Planning Work Program (UPWP), and the Public Participation Plan (PPP).

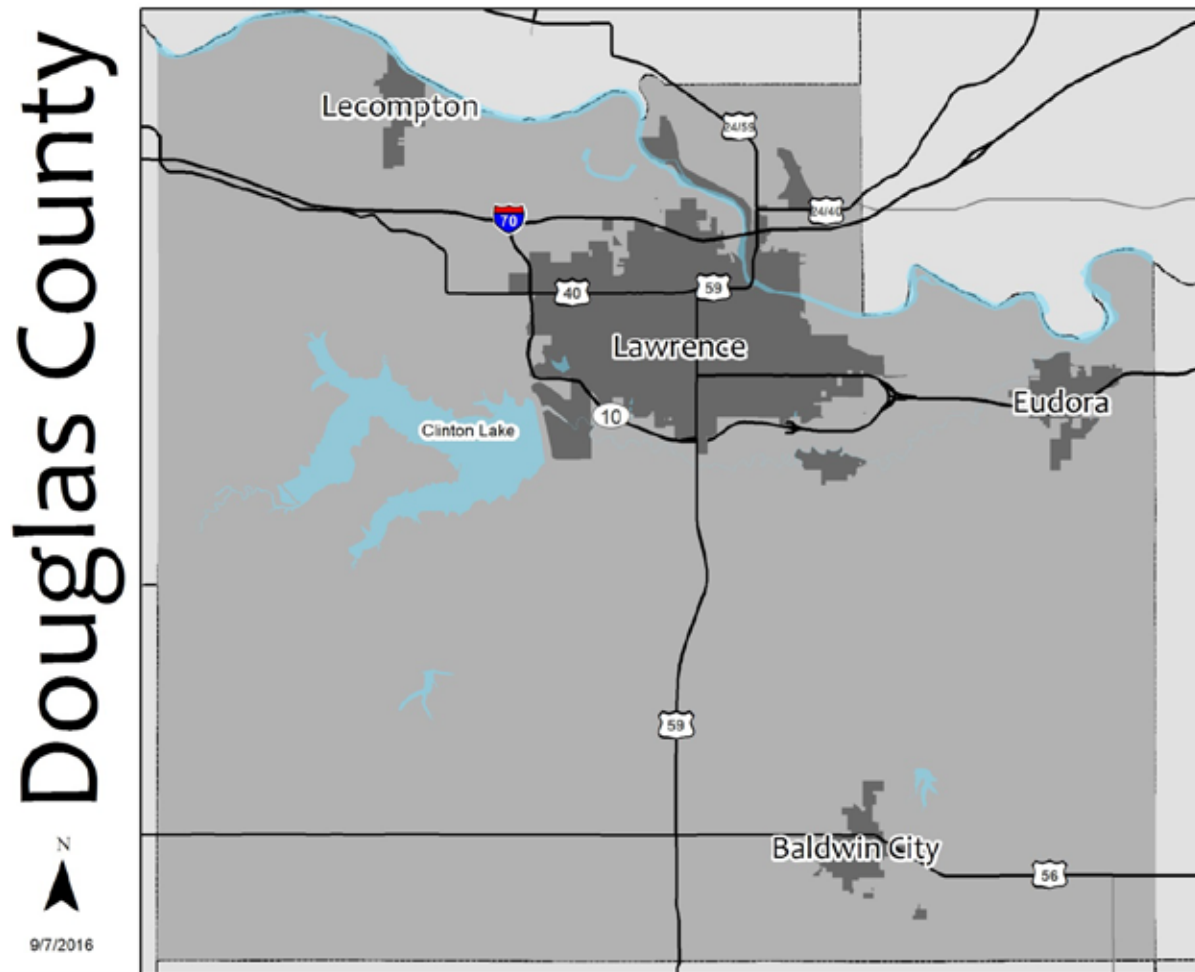
The MPO is a group that is composed of representatives from many local governments that collectively discusses the transportation issues facing the metro area and then makes decisions about how to address those issues.

Figure 1: MPO Structure



The Lawrence-Douglas County Metropolitan Planning Organization (MPO) serves all of Douglas County, Kansas including Baldwin City, Eudora, Lawrence, and Lecompton (see Figure 2).

Figure 2: Lawrence-Douglas County Metropolitan Planning Area (MPA)



What is a TIP?

The Transportation Improvement Program (TIP) documents how the region prioritizes the limited transportation resources available among the various needs of the region.

The TIP is a short-range, multi-year listing of federally funded and/or regionally significant improvements to the region's multimodal transportation system. Projects in the TIP are designed to implement the Metropolitan Transportation Plan (MTP). The TIP must be fiscally constrained and include only projects for which funding has been identified using existing or reasonably available revenue sources. The TIP must be updated at least once every four years, on a schedule compatible with the Statewide Transportation Improvement Program (STIP). The Lawrence-Douglas County TIP is updated every two years.

Statewide Transportation Improvement Program

The STIP is the State's equivalent of an MPO's TIP. It includes all federally funded transportation projects in the state. Projects in the metropolitan areas are included by reference to the relevant STIP.

The TIP and the MTP

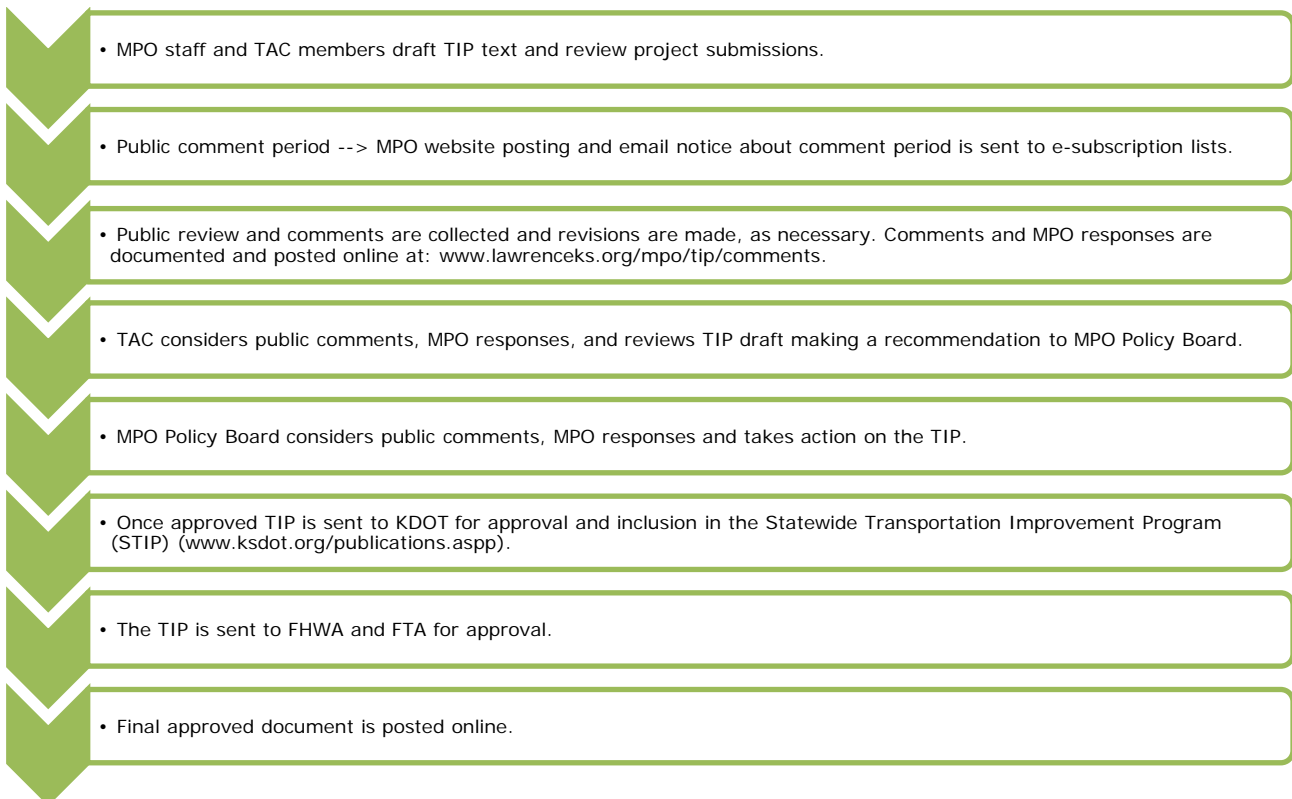
The TIP implements the goals and objectives stated in the Metropolitan Transportation Plan (MTP). These goals include 1) Improve Safety & Security, 2) Focus on System Preservation and Economic Efficiency, 3) Maximize Accessibility and Mobility, and 4) Consider the Environment and Quality of Life. Furthermore, for projects to be included in the TIP, they must be consistent with the MTP. This ensures projects are implementing the MPO's vision for the future.

TIP Public Involvement Process

The MPO's Public Participation Plan (PPP) requires a new TIP to undergo a 30-day comment period and amendments require a 15-day public comment period.¹ The full draft TIP is available on the MPO website (www.lawrenceks.org/mpo/tip) and a printed copy is available at Lawrence City Hall, Lawrence Public Library, Eudora Public Library, Baldwin City Public Library, and Lecompton City Hall. The public is notified of the opportunities to review the draft TIP through a local newspaper advertisement, notification by email, and by staff announcements that the draft TIP is available for comment at MPO meetings.

Public comments are reviewed by MPO staff and if found applicable, those public comments are incorporated into the final draft document sent to the MPO Policy Board for approval. Appendix E contains the public involvement process utilized to develop this TIP.

Figure 3: TIP Public Involvement Process



¹ Details about the public participation process for the approval and amendment of the TIP can be found at www.lawrenceks.org/mpo/public_participation.

PROGRAMMING PROCESS

Legislative Requirement

The current federal surface transportation legislation is called the Fixing America's Surface Transportation (FAST) Act.² It is a five year (FFY 2016-2020) transportation program signed into law by President Obama on December 4, 2015. MPOs are required to develop a TIP that is fiscally constrained and contain all capital and non-capital surface transportation projects within the MPO area that will receive federal funding, as well as other regionally significant transportation projects.³

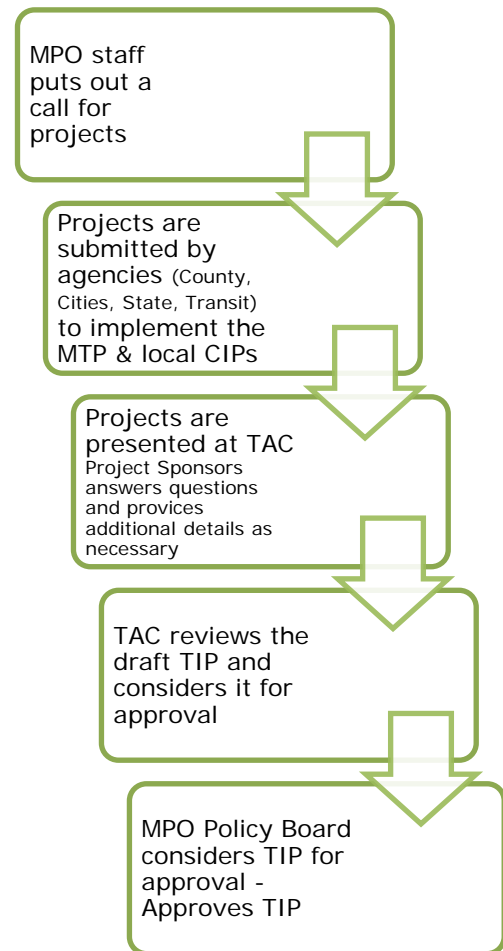
Process for Including Projects in the TIP

The projects included in the TIP are drawn from the area's Metropolitan Transportation Plan (MTP), County and City governments' Capital Improvement Plans (CIP), as well as the State's Transportation Program known as T-WORKS. The MPO encourages Project Sponsors to use the factors in Appendix A to determine which projects should be prioritized for funding and inclusion in the TIP. Project Sponsors submit projects to the MPO staff for inclusion in the TIP and MPO staff work with TAC members to ensure that the projects are regionally significant and are consistent with the MTP. Figure 4 displays the process for including projects in the TIP.

The transit and paratransit projects programmed in the TIP also go through a project selection process. Lawrence Transit staff works with the MPO, FTA, KDOT, and University of Kansas - KU On Wheels (KUOW) staffs to plan and program projects in the TIP that address transit needs and issues identified in the MTP. The KDOT- Office of Public Transportation in consultation with the Urban Corridor Coordinated Transit Council makes the selection of paratransit projects to include in the TIP.

This TIP document contains projects for Lawrence Transit that collectively constitutes the Program of Projects (POP) for Lawrence Transit. This list of transit items is a prioritized list of projects used by the Lawrence Transit staff and reviewed by FTA officials. Approval of the TIP includes the approval of the POP for Lawrence Transit. The public involvement procedures used for TIP development and amendments are used to satisfy the POP requirements for FTA Section 5307 funding.

Figure 4: TIP Project Listing Submission Process



² The FAST Act was created as Public Law 114-96. The official legislation can be accessed at <https://www.gpo.gov/fdsys/pkg/PLAW-114publ94/pdf/PLAW-114publ94.pdf>.

³ In accordance with United States Code Titles 23 and 49, the TIP document must outline at least a four-year program of: 1) All federally funded priority transportation projects, and 2) All regionally significant priority projects, regardless of funding source.

Revisions to the TIP

There are times when information about projects needs to be adjusted. Minor changes to project information are called revisions and are administrative actions with no public involvement required. Major changes are called amendments and require public involvement.

Amendments

Amendments to the TIP often consist of major changes to project cost and/or funding levels. Those types of fiscal changes may have impacts on the ability of the TIP and/or the MTP to remain fiscally constrained. The following types of project changes are always handled as TIP amendments:

- Addition or deletion of a project within the first four (4) years of the TIP (federal regulations require this part of the TIP to show fiscal constraint)
- Total costs and/or funding amounts for a project listed in the TIP increase by more than 20% of the total project cost
- Change to a funding source, project scope and/or location (such as changing from state funding to federal)
- A change of schedule for a project that exceeds one year (see explanation below and Table 1).

Administrative Revisions

Administrative revisions include all revisions that are not formal amendments. These revisions usually involve, but are not limited to:

- Obvious minor data entry errors or editing corrections to text, map, and/or other graphics
- Splitting or combining projects (project scopes and costs cannot change)
- Changes or clarifying elements of a project description (with no major changes in scope)
- Change in funding program or category (such as changing from STP to HSIP funding)
- Shifting funds between a singular year
- Minor change of less than 20% of total project cost

In processing administrative revisions MPO staff will:

- Enter the requested revision into the project database.
- Prepare and publish an updated TIP and post it online.
- Notify the Kansas Department of Transportation of the modifications and request their inclusion in the respective Statewide Transportation Improvement Program.
- Prepare a summary of the revision to be presented at the next scheduled MPO Technical Advisory Committee and Policy Board meetings (no formal action required).

Administrative Revisions require no public comment.

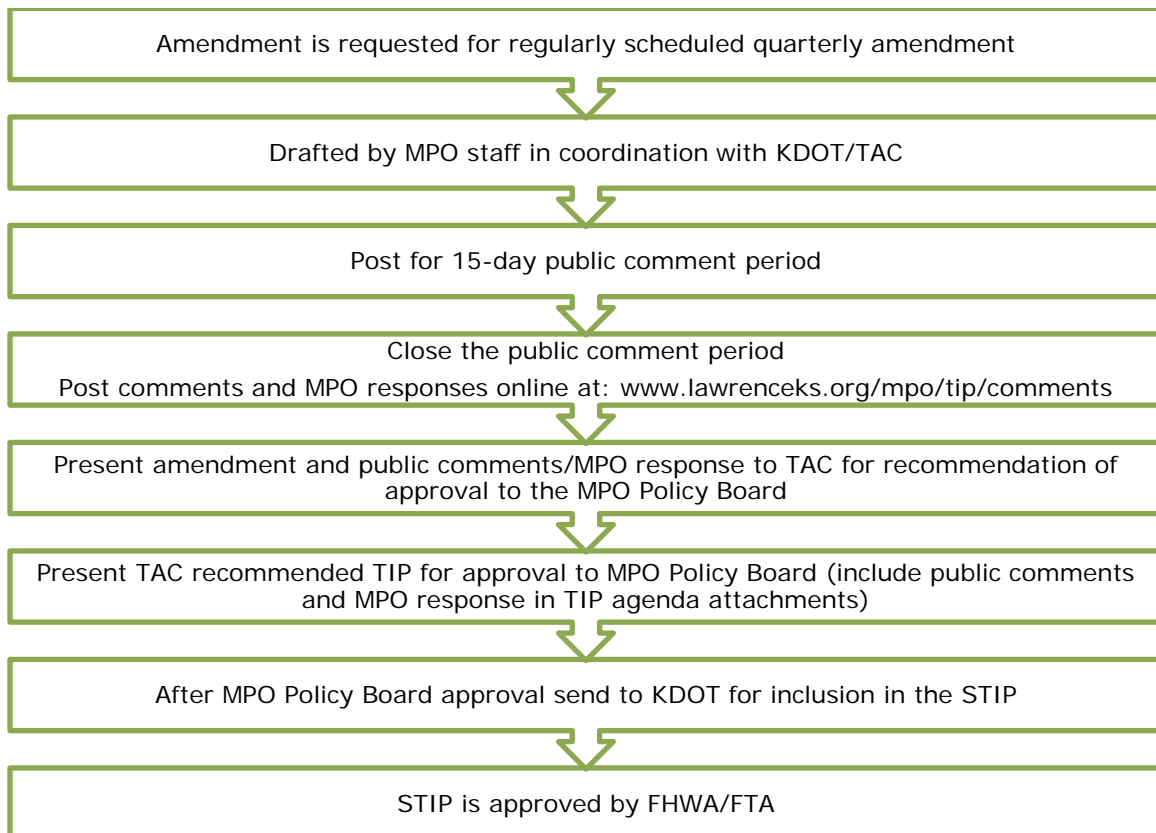
Table 1: Major Schedule Changes – Revision or Amendment

From/To	Year			
	1	2	3	4
1		Revision	Amendment	Amendment
2	Revision		Revision	Amendment
3	Amendment	Revision		Revision
4	Amendment	Amendment	Revision	

Figure 5 displays the TIP amendment process. Amendments to the TIP will be drafted by the MPO staff in cooperation with KDOT staff and TAC members as needed and/or scheduled. The draft TIP amendment will be presented to the TAC for review and approval before sending the amendment to the MPO Policy Board for approval.

After the MPO Policy Board approves the amendment the MPO staff will forward the amendment to KDOT for their review and inclusion in the Statewide Transportation Improvement Program (STIP). The TIP is included in the STIP by reference so an amendment to the TIP also becomes an amendment to the STIP. Then the STIP is approved by FHWA/FTA.

Figure 5: Amendment Process



Amendment Public Process

TIP amendments must be posted for public review and comment, the MPO staff must collect and review any public comments and share those comments with the TAC and MPO Policy Board to address and/or incorporate them, as necessary, before TIP approval.⁴

A minimum 15-day public comment period is required and proposed amendments are posted on the MPO web page. The MPO staff also places a paper copy of all TIP amendments in a binder kept at the front counter of the MPO Office for public review and comments. In addition, all TIP amendment announcements, including the printed advertisement in the newspaper, have the phone number, mailing address, and email address of the MPO staff listed on them so that anyone with questions or comments about the amendment can contact the staff to discuss it. Following the required 15-day public comment period, all comments will receive a response, either individually or in a summary form. The comments and responses will be posted at www.lawrenceks.org/mpo/tip/comments prior to distributing the TAC agenda packet (one week before the TAC meeting). The MPO staff presents these public comments and the staff response to the TAC and the MPO Policy Board before they discuss approving the amendment. There is no requirement for a public hearing.

Amendment Schedule

In order to facilitate the process of making TIP amendments, the MPO has a TIP amendment item on the TAC and Policy Board meeting agenda once each quarter (Table 2). These dates to consider TIP amendments will be coordinated with the KDOT calendar for making changes to the Statewide Transportation Improvement Program (STIP). A similar schedule will be followed for the other years covered by this TIP.

Table 2: FFY2017 Quarterly Schedule for TIP Amendments

TIP Amendment Request Made to MPO Staff	Public Review Period	TAC Approval	MPO Approval	STIP Approval
September-02	9/8/2016 to 9/23/16	October 4, 2016	October 20, 2016	November 2016
January-06	1/12/17 to 1/27/17	February 7, 2017	February 16, 2017	March 2017
March-03	3/9/17 to 3/24/17	April 4, 2017	April 20, 2017	May 2017
June-30	7/6/17 to 7/21/17	August 1, 2017	August 17, 2017	August 2017

These dates are approximate and subject to change following discussions between MPO and KDOT staffs and/or discussions at the Technical Advisory Committee (TAC) meetings.

⁴ An appropriate level of public involvement activities are outlined in the latest MPO-approved Public Participation Plan found online at www.lawrenceks.org/mpo/public_participation.

FISCAL CONSTRAINT

Project Funding

Projects are funded from several sources. Street and highway projects can be financed entirely by State and/or local funds or by any combination of federal, state, and local funds. The Fixing America's Surface Transportation (FAST) Act provides federal-aid to state and local units of government for surface transportation projects.

The use of Federal Transit Administration (FTA) funds are allocated to transit operators by formulas through the FTA Region 7 Office in Kansas City and through the KDOT Public Transportation Programs Office in Topeka. State transit funds from the T-WORKS Program flows through KDOT. These funds are utilized for the operations of Lawrence Transit and various paratransit operations in the region.

KDOT administers Federal Highway Administration (FHWA) funding to local governments. The Surface Transportation Block Grant (STBG) Program and Highway Safety Improvement Program (HSIP) categories are the main federal categories or programs that cities receive through KDOT. The STBG Program combines the long-standing Surface Transportation Program and the Transportation Alternatives Program, now known as TA Set-Aside. Some of these funds provide annual allocations to cities while others require local governments to apply for project specific funding. The TA Set-Aside funds have helped build pathways, do historic preservation projects, and other projects outside the scope of traditional road and bridge improvements. They provide funding for former Transportation Alternatives (TA) program and the Safe Routes to Schools (SRTS) programs.

All of the estimated amounts of transportation project funds are included in the Estimated Revenues and Expenditures Tables found in Appendix G. The estimates of reasonably expected funding levels based on recent experience are compared to the levels of federal, state, and local funding for transportation facilities and services that are requested by KDOT and local governments for inclusion in the TIP. Comparing these expected funding levels and funding request levels allows the MPO to determine if the TIP is fiscally constrained.

Federal Funds

The federal funding for road and bridge projects in the region is generally limited to formula funding levels set by the USDOT and KDOT. Those levels have been relatively steady over the last few years with Douglas County receiving about \$500,000 and the City of Lawrence receiving about \$1 million annually in federal aid for roads and bridges. The three smaller cities in Douglas County (Lecompton, Eudora, and Baldwin City) have small public works departments, thus large road or bridge projects are often managed by Douglas County or KDOT.

Discretionary funding for TA Set-Aside program projects is also available on a more sporadic competitive basis. That funding is not guaranteed in any given year, but our region has received some funding and expects to receive more in the foreseeable future. These funding levels have more uncertainty and therefore, projects must have awarded funding to be included in the TIP and fiscal constraint. If and when local governments in Douglas County are awarded funding from these discretionary programs the MPO will amend the TIP to add that funding and those projects in a timely manner.

State Funds

State funds used in Douglas County for road and bridge projects are mostly limited to KDOT facilities and projects. The level of KDOT funding expended in the region varies greatly by year

due largely to how much work KDOT does on the area's major highways. Recently KDOT has spent large amounts of funding to build the South Lawrence Trafficway (new K-10 alignment), and to build a new interchange along K-10 at Bob Billings Parkway/N 1500 Road. All of those projects are KDOT administered projects on KDOT routes, which typically do not significantly impact the local governments' budgets for transportation improvements (although the City of Lawrence/Douglas County contributed \$1,000,000 for pedestrian and bicycle facility improvements to the K-10/Bob Billings Parkway interchange). Some other smaller amounts of State funding are used for local projects, such as the occasional purchase of a paratransit van with state money or a state contribution to a local bridge project.

For most local governments in the region the main KDOT funding role has been to provide federal aid to local projects, not to provide large amounts of state aid to local transportation improvements. However, the one example in the region where the state funding of a local project does make a routine and significant difference in the local budget process is state transit operating assistance. Lawrence Transit receives about \$1 million in state operating and capital assistance annually which is an important part of their budget.

KDOT does not program projects in their budget documents or ask for projects to be added to the TIP unless a specific identified and reasonable funding source is identified. Therefore, KDOT requests for TIP actions represent a fiscally constrained condition for state funded and/or managed projects.

Local Funds

City of Lawrence

For Lawrence most of that federal funding has come recently in the form of STP and has remained about the same each year at about \$1 million. In 2015, the City of Lawrence received \$.9 million in federal Surface Transportation Program (STP) funds through the KDOT distribution process of sharing federal funds with local governments.

In November 2008, Lawrence voters approved three increases in sales taxes to support the improvement of roads and transit services. A 0.3% increase was dedicated to roads and infrastructure, a 0.2% increase was dedicated to funding transit service, and a 0.05% for overall transit operating and capital improvements (Table 3).

Table 3: Lawrence Sales Tax for Improvement of Roads and Transit Services (Shown in \$1,000s)

Source	Tax Percentage	Collected in 2015
Roads/Infrastructure	0.30%	\$ 4,987
Transit Service	0.20%	\$ 3,325
Transit Operating/ Capital Improvements	0.05%	\$ 831
Total		\$ 9,144

These sales taxes will expire in April of 2019; new referendums will need to be approved to ensure this funding is available in the future. With the addition of those taxes the City has a local dedicated funding source for road and transit improvements that has made funding more predictable. The City is utilizing the sales tax revenue to design and program some large road projects that were not financially feasible prior to the tax. Some projects are now funded with this sales tax revenue and some are still funded with a combination of federal aid and local matching funds.

City of Eudora, Baldwin City, and City of Lecompton

The City of Eudora became a second class city under Kansas statutes in 2010. With the designation, Eudora now receives an annual distribution of STP funding through KDOT. This amount of federal funding is expected to be small (less than \$100,000).

Baldwin City, Eudora and Lecompton have used federal funding sporadically and worked with Douglas County staff to administer major road and bridge projects using federal aid. This cooperation between the small cities and the County for the use of federal aid is expected to continue through the life of this TIP.

Douglas County

Douglas County receives obligation authority for STP funds from KDOT. Douglas County has elected to exchange their available obligation authority of federal funds for state funds at an exchange rate of \$0.90 in state funds for every \$1.00 in federal obligation authority, per KDOT policy. Alternatively, jurisdictions have “banked” the federal obligation authority for a later project. In 2015, the County received approximately \$685,789 in federal STP funds obligation authority through KDOT. The County exchanged the federal obligation authority for \$617,210 in state dollars through KDOT’s federal funds exchange program.

The County can also apply for TA Set-Aside funds if it chooses to do so. The County does not operate transit service and does not receive federal or state transit funding.

Douglas County has a CIP that is updated on a regular basis. The annual CIP allocation in Douglas County in recent years has been approximately \$4 million. This allocation is reviewed and adjusted annually by the Board of County Commissioners. The Board of County Commissions approved the 2016-2020 CIP on August 24, 2016. Table 4 displays the 2017 budgeted and 2018-2020 anticipated funding amounts for facilities, roads, and bridges.

Table 4: Douglas County Approved CIP (Shown in \$1,000s)

Year	Facilities, Roads, Bridges
2017	\$ 4,883
2018	\$ 4,675
2019	\$ 4,341
2020	\$ 4,200
Total	\$ 18,098

The County programs its projects in their CIP and as needed the County staff coordinates its capital planning with the MPO staff for TIP development and changes.

Transit and Paratransit Funds

The public transit operations in Lawrence are composed of a mix of services operated by the Lawrence Transit and the University of Kansas service called KU On Wheels (KUOW). KUOW transit operations are primarily supported by student fees. The City transit service uses state operating assistance, state capital assistance, federal capital assistance, and federal operating assistance to keep buses running. Lawrence also uses local sales taxes to pay for transit. In recent years, Lawrence has used about \$2 million annually in flexible federal formula Section 5307 subsidies to provide transit services. This annually allocated funding can be used for capital projects (e.g., buying new buses), but most of it has been used for operations.

Capital assistance levels are typically much more unpredictable than operating assistance, but when the transit capital funding will be needed is fairly predictable because it is based on the life span of buses. That creates a dilemma for transit operators who in the past relied heavily on large discretionary grants from the FTA for bus fleet replacements. Now those large grants

are gone and our transit operators are adjusting to buying only a few new buses at a time when funding is available instead of buying many buses on one large grant funded order.

Lawrence Transit uses a relatively constant mix of federal and local funds for operations. Under the State T-WORKS Program some state operating assistance is received each year.

The paratransit providers in the region provide all or most of their own funds to operate their services, and in some cases they use FTA grants for vehicle purchases. KDOT also funds paratransit vehicles in the region. As part of these vehicle purchases the agency requesting the federal funds is required to provide a local match, and those vehicles are programmed in the TIP.

Operation and Maintenance (O&M) Funding

The fiscal constraint analysis looks primarily at capital projects (e.g., building roads and bridges, buying buses, etc.), however, that is not a complete picture of funding for the region's multimodal transportation system. The funds needed for operating and maintaining transport facilities and services also has to be reviewed. An adequate level of Operations & Maintenance (O&M) funding needs to be budgeted to maintain the federal-aid highways in the region. Shortchanging the O&M budgets to make the road improvement projects fiscally feasible is not appropriate. This funding is divided into Roads/Bridges and Transit.

O&M consists of routine things such as pothole patching, minor repairs to pavements and curbs, snow removal, striping and marking, utility work and patching, electrical repairs, tree trimming, mowing, signal repairs, sign replacement, bridge maintenance, and other minor work tasks.

Road and Bridge Operations and Maintenance Funding Estimates

The expenses for O&M work items are usually paid for by the local government that owns and operates the road and the utility providers that use the road rights-of-ways.

In the case of major highways, KDOT is the owner of the road and maintains those facilities. The major exception to this is the Kansas Turnpike/I-70 which is owned and operated by the Kansas Turnpike Authority. Some of the state highway mileage in Lawrence is provided on City streets through a connecting link agreement between KDOT and the City. That agreement includes annual payments from KDOT to the City to pay a share of the maintenance costs for those route segments carrying a state highway. KDOT plays a role in the maintenance of some major roads in the region (approximately \$0.555 million per year), but major highway mileage comprises a small percentage of total roadway mileage. Most of the road mileage in Douglas County is owned by the County, City or Township Governments that levy local property taxes and sometimes other taxes to pay for road maintenance and operations.

The cities and county also receive a portion of the state gas tax collected in Douglas County. This amount of funding is anticipated to continue during the years covered by this TIP. The state supplied pass through gas tax funding is supplemented by local government funds to make up the bulk of Lawrence and Douglas County roadway O&M budgets.

For 2015, the City of Lawrence had an O&M budget for its road system of approximately \$3.5 million. Those costs were paid for with \$2.5 million of state gas tax funds and \$1.0 million of local tax sources including the 2008 approved sales tax increase dedicated to infrastructure improvements. For 2015, the roadway O&M budget for Douglas County was approximately \$6 million with approximately \$2.1 million of that total coming from the state gas tax funds and the other \$3.9 million from County tax sources. It is expected that the local governments in the region will continue to fund their O&M budgets in order to adequately maintain their transportation infrastructure during this TIP period. Table 5 shows the KDOT, Douglas County, and the City of Lawrence O&M expected cost per lane mile.

Table 5: Road and Bridge O&M (Shown in \$1,000s)

	KDOT	County*	Lawrence	Total
Cost Per Lane Mile	\$ 2.466	\$ 11.472	\$ 4.424	
Lane Miles	225	523	791	1539
2017	\$ 555	\$ 6,000	\$ 3,500	\$ 10,055
2018	\$ 555	\$ 6,000	\$ 3,500	\$ 10,055
2019	\$ 555	\$ 6,000	\$ 3,500	\$ 10,055
2020	\$ 555	\$ 6,000	\$ 3,500	\$ 10,055
Total Per Lane Mile for 4 Years	\$ 2,219	\$ 24,000	\$ 14,000	\$ 40,219

*Does not include Township roads or road maintenance funds, but County maintenance costs does include bridges and large culverts on township roads that are maintained by the County.

Transit Operations and Maintenance Funding Estimates

Transit operations are funded with a mix of local, state, and federal funds. The transit system in Douglas County is a coordination of services owned and operated by the City of Lawrence, the University of Kansas, social service agencies that run paratransit vehicles, and Johnson County Transit that operates a commuter bus service called the K-10 Connector, which traverses between Lawrence and locations in Johnson County. K-10 Connector funding is programmed in the TIP produced by the Mid-America Regional Council (MARC), which is the MPO for the Kansas City Area.

Lawrence Transit

Lawrence Transit service uses federal, state, and local funds for operating and routine maintenance expenses for their fixed-route and complementary paratransit services. Lawrence Transit needs to pay for its services when they are rendered (i.e., when the buses are rolling, burning fuel and labor costs are incurred) by maintaining a cash flow to pay for its vendors and staff as they work. Unlike a road or a bridge that can be bonded for twenty years and paid for over time, transit operations are typically not paid for with debt service. For 2015, Lawrence Transit had an O&M budget of approximately \$5.2 million which was funded with \$2 million of federal aid, \$0.5 million of state aid, \$0.4 million of farebox revenue and \$2.3 million of local funds. Those levels of O&M expenses and revenues are anticipated to continue through the four-year fiscally constrained period (2017-2020), as shown in Table 6.

Table 6: Lawrence Transit O&M (Shown in \$1,000s)

FFY	2017	2018	2019	2020	Total
Total O&M	\$ 5,200	\$ 5,200	\$ 5,200	\$ 5,200	\$ 20,800

However, the transit tax's ten year horizon will sunset in April of 2019. If funding decisions are not made, the overall transit budget including O&M will be greatly impacted. Operations and maintenance funding for Lawrence Transit is shown in the Estimated Revenues and Expenditures Tables founding Appendix G.

The O&M costs are deducted from the estimated revenues; therefore, funding for O&M projects are not available other projects and the TIP is fiscally constrained.

Paratransit

The paratransit providers in the region mostly provide their own funds to operate their services, but in some cases receive a small amount of state operating subsidy from KDOT. Typically, this state operating assistance is only a few thousand dollars per year for each operator. Most of the federal and state aid to paratransit is for vehicle purchases. The MPO staff works closely with the KDOT transit staff, the Regional Transit Advisory Committee (RTAC), and the Urban Corridor Coordinated Transit Council members to keep informed about the status of paratransit operations and funding issues. Those paratransit issues are discussed

in more detail in the Coordinated Public Transit-Human Services Transportation Plan (CPT-HSTP).⁵

University of Kansas (KU on Wheels) Transit Funding

The University of Kansas also provides transit services that are available to the general population as well as KU students and staff. Funding for the KU On Wheels system includes a considerable amount of funding that supports fixed route transit in Lawrence. The KU transit funding information listed in Table 7 gives a more complete and realistic account of the size and costs of the transit system in Lawrence.

The KU On Wheels (KUOW) and the Lawrence Transit services are integrated into one route and schedule system and both of these operations accept each other's bus passes. Even though these two services are coordinated into one route map and schedule book, only Lawrence Transit receives FTA funding. The KUOW operations are expected to maintain the KUOW transit service at current levels through the years covered by this TIP. The KUOW part of the public transit system in Lawrence is fiscally constrained by the revenues provided by fees that support it.

Table 7: KU on Wheels (KUOW) – University of Kansas Transit System Funding Estimates in \$1,000s

Funding Programmed in the KU Parking & Transit Budget				
Year	KU Parking Funds	KU Student Fee Funds	Other Funds	Total Funds
2017	\$ 1,220	\$ 3,285	\$ 133	\$ 4,638
2018	\$ 1,239	\$ 3,285	\$ 133	\$ 4,657
2019	\$ 1,239	\$ 3,285	\$ 133	\$ 4,657
2020	\$ 1,196	\$ 3,285	\$ 133	\$ 4,614
4-Year Totals	\$ 4,894	\$ 13,140	\$ 532	\$ 18,566

Year of Expenditure (YOE) Inflation Factor

In addition to having a clearly identified source of funding for each roadway, bridge, transit, and enhancement project listed in the TIP, the project sponsor must also present their project costs in year of expenditure (YOE) dollars. This allows the project estimates to take into account inflation and should make them more realistic than using constant dollars. This fiscal analysis uses an annual inflation factor of 1.5% (which matches the T2040 Inflation Factor) for all TIP projects to determine the estimated costs in the year of expenditure. This inflation factor was developed by KDOT in 2012 for use with federal aid projects. TAC and MPO Policy Board members agreed to the YOE inflation rate.

Demonstration of Fiscal Constraint

TIPs are required to have a four year fiscally constrained program of projects. Fiscally constrained means enough financial resources are available to fund projects listed in the TIP. Fiscal constraint also makes good sense.

This TIP document provides realistic cost and funding estimates for improvement projects in the first two years of the fiscal constraint period (2017 and 2018). Predicting the revenues that will be available and costs for projects in the second half of that period (2019 and 2020) are a

⁵ Access this plan at <https://www.lawrenceks.org/mpo/transit>.

more speculative exercise, especially as the current tax referendum will sunset in April of 2019. Decisions will need to be made regarding future funding. Thus revenues for 2019 and 2020 are based on rough estimates of available funds and costs, which are helpful in showing the four years of fiscally constrained project tables. The MPO has assumed that 2015 levels for federal funding will remain in place for funding through 2020. The Estimated Revenues and Expenditures Tables in Appendix G show that the level of projected funding from reasonable sources and the total level of project funding programmed in this TIP is balanced and this TIP is fiscally constrained.

ENVIRONMENTAL JUSTICE REVIEW

The Environmental Protection Agency (EPA) defines Environmental Justice as the "fair treatment for people of all races, cultures, and incomes, regarding the development of environmental laws, regulations, and policies." Environmental Justice (EJ) is a federal requirement that projects using federal funds be selected and distributed fairly to all people regardless of income or race and that all people have equal access to the benefits afforded by federally funded projects as well as equal access to the decision-making process for the selection of those federal projects.⁶ This concept is conveyed in the three Environmental Justice Principles shown in Figure 6.

Figure 6: U.S. DOT Environmental Justice Principles



Read about how the MPO is providing access to the transportation planning process at www.lawrenceks.org/mpo/public_participation.⁷

Methodology

In response to EJ regulations the MPO developed a process to assess the impact of transportation planning processes regarding the TIP on the target populations. The results of the analysis in this EJ review provide insight to the MPO's commitment to achieve the US DOT EJ Principles.

Define Target Populations and Thresholds

Low-income and minority populations were identified in the MPO area. This is done by utilizing Census tracts and 2010-2014 American Community Survey (ACS) 5-year estimate data. Tracts are determined to meet the EJ threshold if they meet either of the criteria listed below.

Low/Moderate Household Income Population, by 2010 Census Tracts

The threshold for low/moderate household income was 50 percent or more of the population residing in households earning less than 80 percent of the area's median income. The City of Lawrence Neighborhood Resources Division of the Planning and Development Services Department currently uses this information to identify areas within the community that have higher concentrations of low and moderate income residents. Various housing rehabilitation program funds and Community Development Block Grant (CDBG) funds are targeted toward these areas.

⁶ This policy is defined in Executive Order 12898 that was signed by President Clinton on February 11, 1994.

⁷ Title VI Civil Rights and Environmental Justice Non-Discrimination issues can be found in the MPO's Title VI Program Manual and the Public Participation Plan. More Environmental Justice information related to programs, including MPO operations which are funded by the Federal Highway Administration (FHWA) and the Federal Transit Administration (FTA), can be found at the following website: www.fhwa.dot.gov/environment/environmental_justice/overview.

99% Confidence Interval for the Mean Minority Population, by 2010 Census Tracts

The US Census Bureau collects demographic data for one race and a combination of races. For this review, only one race data attribute was used to depict areas within Douglas County that have a minority population within the 99% Confidence Interval average population residing in Lawrence and Douglas County. Essentially, a confidence interval indicates a range of values that's likely to encompass the true value in our community. With a 99% mean confidence interval we are 99% sure that the interval contains all of the values. The mean minority population is 18.71%. The 99% confidence interval is $\pm 5.24\%$. Therefore, $18.71\% + 5.24\%$ equals 23.95%. So we are 99% sure that the minority population is under 23.95%.

The majority race in this region is White/Caucasian and the other races collectively are considered as the minority group population for this EJ analysis. The 2010-2014 American Community Survey 5 Year Estimates indicates the minority population within Douglas County represents 10.9% of the total population. In Lawrence, the minority population is slightly higher representing 12.8% percent of the total population.

The EJ zones consist of areas where census tracts are either Low/Moderate household income and/or at the minority 99% confidence interval. The EJ zones are mapped in Figure 7 & 8. Approximately 46,502 people or 42% of the total Douglas County population resides within EJ zones. No EJ zones are identified outside of the City of Lawrence. The EJ zones within Lawrence are located generally to the east of Iowa Street.

Assess and Analyze Investments in the TIP

This assessment and analysis compares the EJ zones with TIP projects locations and fixed route transit services. EJ zones were also evaluated by EJ population within the ¼ mile buffer of transit routes and EJ population with zero vehicle households.

TIP Projects: Roadway, Bridge, Intersection, Enhancement, Access Management

TIP projects were mapped to see where the projects intersect with EJ zones. Not all TIP projects could be mapped for the EJ analysis. This analysis does not include transit allocations, planning studies, SRTS allocations and projects that are not limited to a specific point on a map. Table 8 shows the total 2017-2020 TIP projects, the TIP projects that were able to be mapped, and the mapped TIP projects that are within the EJ zones.

Table 8: TIP Projects (Shown in \$1,000s)

	Number of Projects	Total Project Cost
TIP Projects (2017-2020)	41	\$ 94,060
TIP Projects Mapped	28	\$ 66,605
TIP Projects Mapped in EJ Zones	12	\$ 28,581

*Total project cost includes project phases outside of the TIP years (2017-2020)

Twenty-eight (28) projects were able to be mapped in this TIP, for a combined total of \$66.6 million. (There are some projects that do not have specific locations or transit areas that cover the entire region – these projects are not mapped). These projects are completely or partially, on a road that is in an EJ zone or along an EJ zone border. Of the 28 mapped projects in the 2017-2020 TIP, 12 are considered EJ projects for the purpose of this analysis for a total improvement cost of \$28.5 million (as shown in Table 9). Approximately 43% of the total funding for the 28 mapped projects will be invested in EJ zones.

Table 9: EJ Zone Projects (Shown in \$1,000s)

Project Number	Project Name	Project Type	Total Project Cost	Multimodal Elements Included
107	Kasold Reconstruction: Clinton Pkwy to HyVee	Reconstruction	\$ 1,100	X
203	19th Street: Naismith Dr to Iowa St Reconstruction	Grading & Surfacing	\$ 2,000	X
204	Kasold Drive Reconstruction	Grading & Surfacing	\$ 5,920	X
205	K-10 Access Point Consolidation	Access Management	\$ 421	
212	9th Street Reconstruction: Massachusetts St to Delaware St	Grading & Surfacing	\$ 3,600	X
229	19th Street Reconstruction: O'Connell Rd to Harper St	Reconstruction	\$ 3,000	X
232	W 23rd St & Ousdahl Rd Intersection/Storm Sewer Improvements	Intersection Improvements	\$ 3,600	
234	23rd Street Reconstruction: Haskell Ave to East City Limits	Reconstruction	\$ 7,200	X
242	Access Consolidation on K10 West of Ousdahl Road	Access Management	\$ 80	
500	Santa Fe Depot Restoration	Special Work	\$ 1,501	
603	W 23rd St Access Management: 2246 Ohio St Driveway Removal	Access Management	\$ 9	
604	Massachusetts St, 11th to 14th St Reconfigure Lanes	Mill/Overlay	\$ 150	X

*Total project cost includes project phases outside of the TIP years (2017-2020)

Total \$ 28,581

A majority of the projects that are within EJ zones are reconstruction projects, where the only expected impact is during the actual reconstruction, e.g. road closures, delays. Furthermore, a many of the projects include installing infill of missing sidewalks, additional Shared Use Paths or improvements to existing multimodal facilities, thereby improving connectivity and mobility for all populations.

However, EJ analysis is more than just the location of the projects and how many are (or aren't) in EJ areas. All of the projects in this TIP have impacts and benefits both during construction and long term after they are built as part of the network. Of the projects included in this TIP, there are no anticipated impacts to significant property displacement.

A review of the MPO's urban area indicates that all residents in the urban portion of the region regardless of race or income experience the impacts of the urban transport system in similar fashion. The benefits and impacts of that urban transportation network are not concentrated in any particular EJ zones.

The region's transportation projects are selected based on the merit of the project and the need for improvements to the transport system without any intended bias towards impacting EJ areas any more than any other area in the region.

There are busy congested intersections all around the urban area in both high and low income areas. Regardless of your racial group or where you live you are likely to encounter one of those intersections near your home. The impacts from the transportation system (congestion, noise, pollutant emissions, etc.) appear to be more related to whether you live in the Lawrence Urbanized Area or not; more than related to whether you live in a minority or low income area or not. Disproportionate impacts from federally funded transportation projects on low income or minority population clusters were not observed in this EJ analysis.

Figure 7: MPO Programmed Roadway Projects in Relation to EJ Zones (Douglas County)

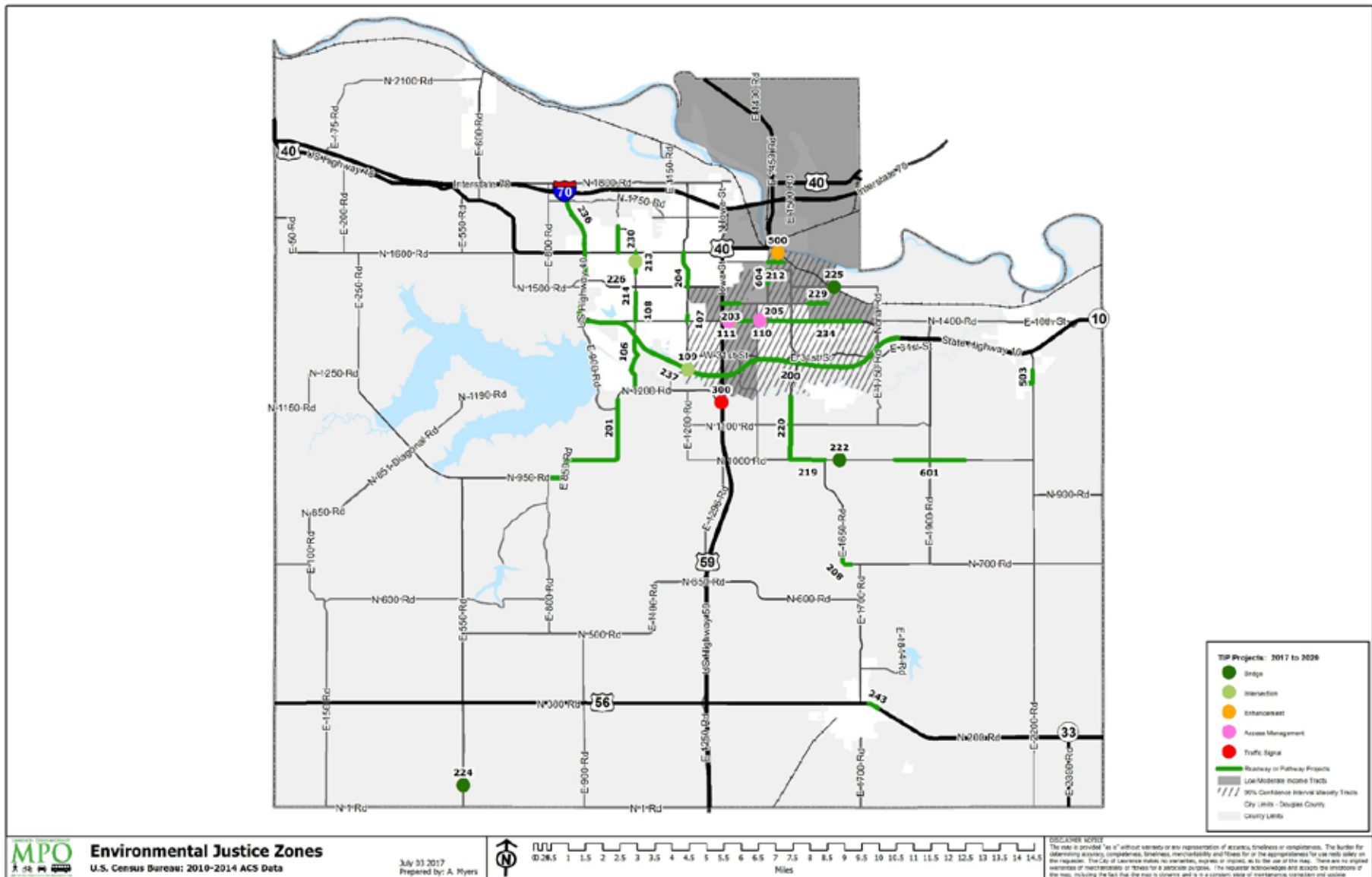
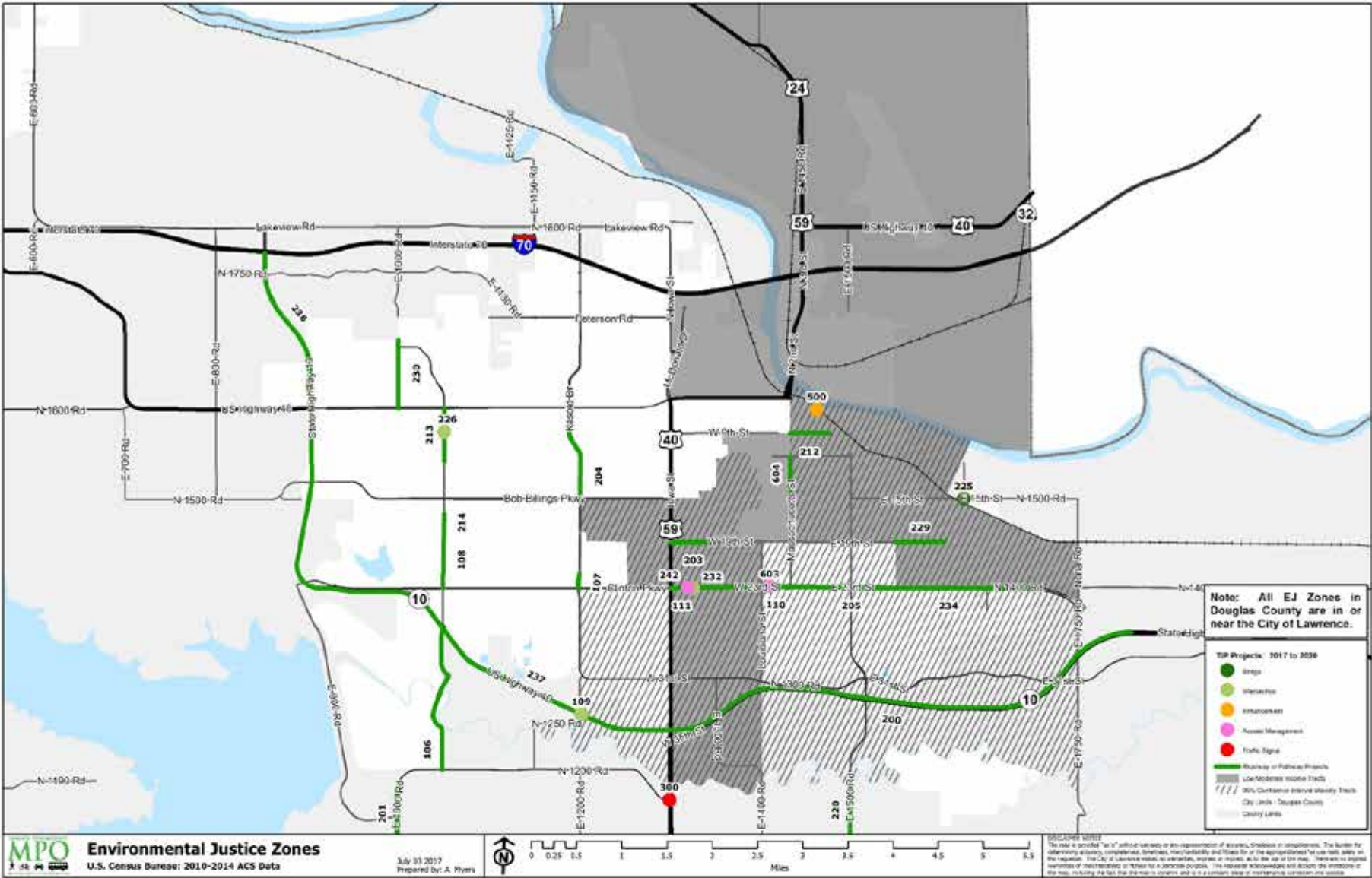


Figure 8: MPO Programmed Roadway Projects in Relation to EJ Zones (Lawrence)



TIP Projects: Fixed Route Transit

Lawrence Transit & KU on Wheels 2016-2017 fixed routes are shown on Figure 9. Sixteen (16) or 88% of the current routes have 30 minute or less service during peak times. Lawrence Transit & KU on Wheels is transitioning all routes to 30 minute or less service during peak times. This transition is occurring as resources become available. Route information can be accessed at www.lawrencetransit.org/routes. None of Lawrence Transit projects were mapped because the transit service occurs throughout the community and is not located on one fixed point. Lawrence Transit projects include operating costs for fixed route and paratransit services, as well as the capital costs associated with vehicle acquisition.

For the case of federally supported transit services, both the fixed route system and paratransit service areas, cover parts of Douglas County with low-income and/or minority populations. Therefore, the TIP projects associated with these transit and paratransit services are all considered to serve EJ populations and to be located in EJ zones for the purpose of this analysis. If there is any difference with EJ zones it seems to be that some EJ zones receive greater choice and frequency of transit services due to the fact that those areas coincide with the parts of the region with population densities high enough to support frequent fixed route transit.

Additional review was performed to provide further mobility analysis in determining if there are any disparate or adverse impacts resulting from transit services included in the TIP. Projects were evaluated to determine the percentage of people who live within the EJ zones that are within a ¼ mile buffer of transit routes and the people who live within the EJ zones that are zero vehicle households. Zero vehicle households also access transit to gain mobility, but again stops must be within walking distance to be easily used.

As shown in Figure 10, approximately 41,675 people or 90% of people who live within the EJ zones are within ¼ mile of a transit fixed route. A ¼ mile is generally the distance people are comfortable walking. Thus, 90% of people who live within EJ zones have easy to access transit service, thereby expanding their mobility.

The darker red color within the zero vehicle households map (Figure 11) indicates a high concentration of zero vehicle households. The high concentration of zero vehicle households is served by transit.

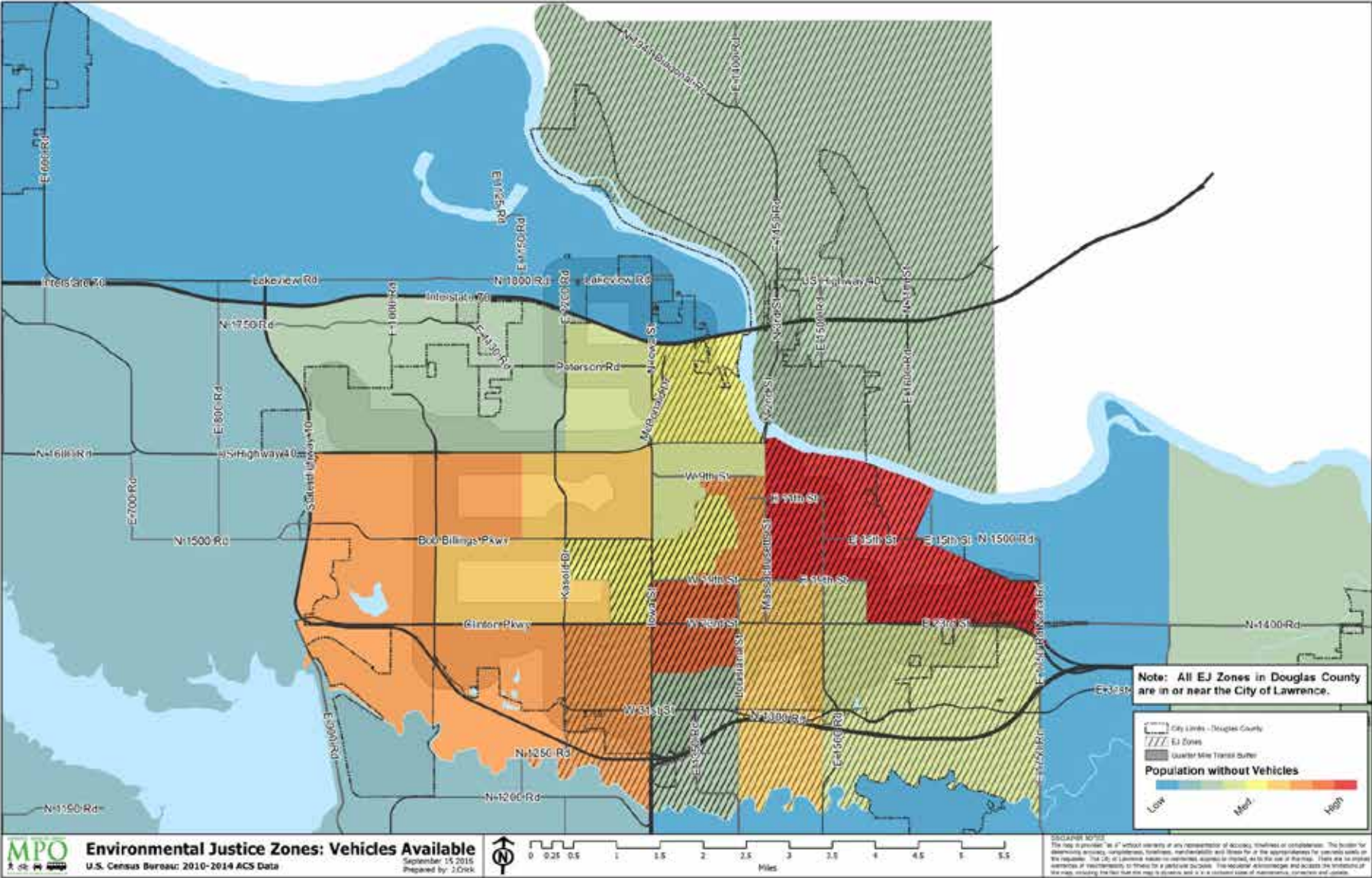
FFY 2017 TIP



FFY 2017 TIP



Figure 11: Zero Vehicle Households in Relation to EJ Zones



Conclusion

Reviewing the assessment and analysis in this chapter the MPO believes there are no significant EJ issues with the selection of roadway, bridge, transportation enhancement, or transit projects in Douglas County. This TIP includes projects inside and outside of EJ zones, and projects for this TIP are selected based on objective planning and engineering criteria (e.g., bridge deterioration, pavement condition, transit demand, etc.).

APPENDICES

Appendix A – Planning and Engineering Factors for Project Selection

Planning Factors

- Ø Is the project consistent with the goals and objectives found in the Metropolitan Transportation Plan (MTP)?
- Ø Is the project listed as a recommended transportation system improvement in the MTP?
- Ø Is the project regionally significant as defined by federal regulations and the latest Regionally Significant Policy approved by the MPO?
- Ø Is the project consistent with the latest MPO/FHWA approved Functional Classification Map?
- Ø Is the project consistent with the latest locally approved comprehensive plan (including the land use plan, area plans, Safe Routes to School, and other comprehensive plan elements/chapters) covering the project location?
- Ø Does the project include provisions for transit, bicycle, and pedestrian movements (including students and ADA accessibility) as needed to provide a regional multimodal transportation system?
- Ø Has the project sponsor considered Title VI and Environmental Justice (EJ) impacts in the planning for this project, and if the project is in a minority and/or low-income area has the project sponsor considered and addressed the Title VI and EJ issues related to the project?
- Ø Has the project sponsor received public comments about this project and if received considered those public comments in the planning and design of the project?
- Ø Is the project eligible for the type of federal and/or state funding being proposed for it, and is there adequate funding available for the project in the year it is proposed?

Engineering Factors

- Ø Does the Project address a facility that has (existing or projected) a high volume to capacity ratio indicating it or will experience significant congestion and lower levels of service?
- Ø Does the project location have a traffic accident history marked by a higher than expected accident rate which, along with other accident attributes, indicates that an engineering change could reduce the number and/or severity of crashes?
- Ø Does the project location have pavement conditions noting a deteriorated state showing that the facility is in need of improvements to maintain its function and/or that those improvements can be made economically now before more costly reconstruction is needed?
- Ø Does the project site include geometric design that is inadequate by current standards and does the project sponsor have documentation that this design is hampering the facility's ability to handle the traffic loads and/or vehicle sizes using the facility in a safe and efficient manner, and does the project sponsor plan to address those geometric deficiencies as part of this project?
- Ø Does the project site or facility have structural deficiencies indicating that the facility is near the end of its projected lifespan and that it will need frequent maintenance to function adequately, and does the project sponsor plan to address these structural deficiencies as part of this project?
- Ø Have safety concerns involving motorists, bicyclists, pedestrians and/or transit users and transit operations been identified at the project location and does the project sponsor plan to address those concerns as part of this project?
- Ø Has the project location met minimum engineering standards set by the project sponsor that indicate the facility is in need of improvement, rehabilitation or replacement?

*This list is not exhaustive. It is used at the discretion of local governments and project sponsors and may be changed in the future.

Appendix B – Definitions of Major Projects and Significant Delay

Roadways (including intersections and bridges)

The major roadway projects include projects located on a roadway classified by the MPO as a Major Collector or higher, with construction costs of at least \$2.0 million and that have at least one of the following attributes:

- Designed to increase roadway capacity and/or decrease traffic congestion
- Designed to improve safety
- Designed to replace aging infrastructure and bring it up to current standards
- Results in significant delay and/or detours during construction

Major projects do not include the following types of projects that are considered to be routine maintenance projects: mill & overlay, micro-abrasion, micro-surfacing, crack sealing, concrete rehabilitation, curb repairs, sweeping, mowing, spot repairs, and interim measures on detour routes.

Transit Facilities and Services

The major transit projects include projects that need to be listed in the TIP because they use federal funding and/or are regionally significant, have a total cost of at least \$1.0 million, and meet at least one of the following criteria:

- Acquisition of three or more new transit vehicles
- Addition or expansion operations and/or maintenance buildings
- Initiation of new transit service or expansion of transit services into territory not previously served

Major transit projects do not include the following types of projects that are considered to be routine: preventive maintenance on transit vehicles; purchase of spare parts, shop supplies and fuel; annually received formula based operating assistance; purchase of bus stop signs, shelters and related items; scheduled purchases of one or two transit vehicles; staff training and recruitment; and other routine operational activities.

Bikeway and Pedestrian Facilities

The major bikeway and pedestrian projects includes projects that need to be listed in the TIP because of federal funding and/or regional significance, and meet at least one of the following criteria:

- Total project cost of at least \$ 500,000
- Construction of bikeway or pedestrian facility (or extension of existing facility) into a location where a bicycle/pedestrian facility did not exist before

Major bikeway/pedestrian projects do not include the following types of projects that are considered to be routine maintenance projects: patching, crack sealing, curb repairs, sweeping, mowing, spot repairs, landscaping maintenance, sign replacements, and other routine operational activities.

Significant Delay

The term significant delay will be defined as two years or more from the year first listed for the project in the previous TIP.

Appendix C – Progress on Previous TIP Projects

Major Projects from the Previous 2015-2019 TIP

Using the definitions listed above the following major projects from the previous 2015-2019 TIP were implemented between the start of 2015 and the approval date for this new 2017-2020 TIP. This current TIP covers 2017 to 2020 so some 2017 projects could be listed in both the previous and current TIP documents.

Table C-1: Completed Major Projects

TIP #	Project Type	Project Name	Project Sponsor	Location	Scope	Year	Cost (In 1,000s)
202	Road	Route 1055 from Route 12 to Vinland	Douglas County	Route 1055 from Route 12 (N 400 Rd.) to Route 460 (N 700 Rd.)	Roadside Safety Improvements: Culvert replacements/extensions, tree removal in ROW	2014-2015	\$ 565
206	Interchange	K-10/15th St./Bob Billings Pkwy Interchange	KDOT	K-10/15th Street/Bob Billings Pkwy	Construct Interchange	2016	\$ 6,432
210	Intersection	Bob Billings Pkwy & George Williams Way Intersection	Lawrence	Bob Billings Pkwy & George Williams Way Intersection	New traffic signal	2015	\$ 500
211	Road	Bob Billings Pkwy: Wakarusa to Foxfire Dr Reconstruction	Lawrence	Wakarusa to Foxfire Road	Reconstruction	2015	\$ 2,000
215	Road	Lawrence KLINK: Selected portions of Us-59	Lawrence	Mus-59 from 6th St to Harvard Rd and from Irving Hill Rd to 21st St	Mill and Overlay	2016	\$ 617
216	Road	Route 1055 3-R Improvements North of Wakarusa	Douglas County	Rte 1055 from Waka. R. Bridge to Relocated Haskell construction	Extend typical section and concrete pavement from south end of relocated Haskell to north end of Wakarusa River bridge	2015	\$ 342
217	Road	Route 1055 Pavement Rehabilitation, Rte 12 to N700	Douglas County	Rte 1055 from Rte 12 to N 700	Reconstruction from N 500 Rd north .55 mi; remaining pavement rehabilitated	2015	\$ 1,009
218	Bridge	Bridge 0507-1700 Replacement	Douglas County	Rte 1055 .07 mi north of N500 Rd	Replace bridge, stabilize channel	2015	\$ 804
223	Bridge	Bridge 1189-1500 Rehabilitation	Douglas County	Rte 1055 at Wakarusa river	Modify South abutment; reset bearing devices; repair deteriorated concrete; polymer concrete overlay	2015	\$ 330
228	Road	Bob Billings Parkway Improvements, Kasold to Wakarusa	Lawrence	Kasold to Wakarusa	Major resurfacing, traffic control & sidewalks.	2015-2016	\$ 2,400
231	Intersection	US 40/6th St & Champion Lane Signalization	Lawrence	US 40/6th St & Champion Lane Intersection	Construct traffic signal	2016	\$ 440
235	Road	KLINK US 59 (Iowa St)	Lawrence	US-59 (31st to 23rd St)	Mill & overlay of Iowa Street between 31st and 23rd St with full depth patching and new pavement markings.	2016	\$ 870
238	Road	K-10: Approximately 500ft W of Harper St	KDOT		Consolidation of access points (Orschlen's) & construction of right turn lane	2016	\$ 113
239	Road	Improvements on K-10 West of Naismith Dr	KDOT	K-10 improvements to median	Median treatment to allow right out only near Natural Grocers	2016	\$ 51
240	Road	Access Consolidation on K-10 West of Alabama St (Jiffy Lube)	KDOT	K-10 W of Alabama St	Access improvements	2016	\$ 31
241	Road	Access Consolidation on K-10 West of Alabama St (Chipotle)	KDOT	K-10 W of Alabama St	Access improvements	2016	\$ 31
300	ITS	23rd St Traffic Signal Coordination	KDOT	Lawrence	Install fiber optic cables & video detection systems	2016	\$ 180
301	ITS	West Lawrence Traffic Signal Timing	KDOT/Lawrence	6th St, Wakarusa, Clinton Pkwy	Adaptive traffic signal system - new controllers, PTZ cameras & cabinet modifications	2016	\$ 529
404	Transit/Paratransit	JARC Small Urban Funds	Lawrence Transit	Lawrence	FFY 2009 small Urban JARC funds passed thru from KDOT. 80/20 split.	2015	\$ 310
405	Transit/Paratransit	Transit 5309 Funds	Lawrence Transit	Lawrence	FFY 2008 Capital 83% Fixed Route Bus Replacement	2015	\$ 631
406	Transit/Paratransit	Transit 5309 Funds	Lawrence Transit	Lawrence	FFY 2008 Capital - Bus & Bus Facilities -- Fleet Replacement 83%	2015	\$ 177
407	Transit/Paratransit	Transit 5309 Funds	Lawrence Transit	Lawrence	FFY 2009 Capital 83% Fixed Route Bus Replacement	2015	\$ 30
501	Enhancement	Baldwin City Depot Railscape	Baldwin City		Extend the length of the brick boarding platform, cover the platform and install lighting, install native prairie landscaping and three additional ADA parking spaces to complete the Depot Railscape	2016	\$ 260
700	Other	South Lawrence Trafficway Widening Study	KDOT	K-10 West Leg in Douglas County US 59/K10/Iowa to I70/KTA/K10 Junction	Study to provide a 4-lane freeway section, review area issues, current transportation needs, impacts on current projects, interchange configurations, reevaluate the evrn docs for preferred improvements, traffic analysis, field survey & public involvement	2015	\$ 175
702	Other	US-59 Seeding Project	KDOT	Douglas Co Line N to 2L/4L divided	Permanent seeding	2015	\$ 498

Major Projects from the 2015-2019 TIP That Were Significantly Delayed

Table C-2: Significantly Delayed Major Projects

TIP #	Project Type	Project Name	Project Sponsor	Location	Scope	Original Year	Currently Programmed Year in the TIP	Cost (In 1,000s)
204	Road	Kasold Reconstruction	Lawrence	Kasold Drive: Harvard Road to Bob Billings Pkwy	Reconstruction of street will include subgrade treatment, concrete pavement and multi-modal facilities	2015-2016	2015-2017	\$ 5,920
212	Road	9th Street Reconstruction	Lawrence	Massachusetts St to Delaware St	Reconstruction of street will include subgrade treatment, surfacing, storm sewer, geometric improvements and multimodal facilities.	2015-2016	2015-2018	\$ 3,600
229	Road	19th Street Reconstruction, O'Connell to Harper	Lawrence	O'Connell to Harper	Reconstruct \$ tie into venture park, roundabout at 19th & Harper, construct sidewalk & bike lanes	2016-2017	2018	\$ 3,000

Appendix D – Latest Federal Fiscal Year - List of Obligated Projects

The purpose of this listing is to illustrate the progress of federal aid transportation projects in the region as they move through the years in the TIP projects table and onto the recently obligated projects list. Projects are listed based on the year the federal funds were obligated, not necessarily the year the construction of the project began. The federal amount represents the federal funds spent on the project.

The table below describes projects listed in the TIP that were obligated in the previous Federal Fiscal Year (FFY). A listing of projects with federal aid obligated in the previous FFY are presented to the MPO each year for review either as part of a TIP approval or amendment or as a separate memo.

The listing will be made available on the MPO website and sent to the Kansas Department of Transportation who will then distribute the listing to the FHWA and the FTA for informational purposes.

Lawrence-Douglas County MPO Area - List of Project for Which Federal Funds Were Obligated to in FFY 2016 (Cost in \$1,000's)											
MPO #	KSOT #	Project Name	Responsible Party	Route or Service Area / Project Location	Project Description	Work Description	Federal Funding Source	Federal Funds Obligated in FFY 2016	Federal Funds Obligated in FFY 2015	Federal Funds Obligated in FFY 2014	Federal Funds Obligated in FFY 2013
400 and 417	5307-400-40	Operating Funds (Independence Line) PTA 5307	Lamarine, Mo.	Lamarine	Trunk/Arterial	Operating	5307	6,790	1,410	1,410	6,960
413		Capital Funds	Independence, Mo.	Based in Lamarine - Douglas County	Trunk/Arterial	Capital - Full Size Van Procurement	5310	47	47	47	160
144	6-7880-01	Franklin-Douglas County Line, North To 24th Street	KDOT	Franklin-Douglas County Line N To 24th St.	Franklin-Douglas County Line, North To 24th St.	Gr & Brdwn 4-Lane Freeway (South Alignment) Construction	5307	66,056	12,481	66,056	0
174-007-75	6-7880-06	Franklin-Douglas County Line, North To 24th Street	KDOT	Franklin-Douglas County Line N To 24th St.	Franklin-Douglas County Line, North To 24th St.	Gr & Brdwn 4-Lane Freeway (South Alignment) Construction	5307	18,588	82	12,289	6,000
66	6-8392-04	South Lawrence Freeway	KDOT	US 59 Just US 59 (K-10) to K-10	US 59 Just US 59 (K-10) to K-10	Gr & Brdwn 4-Lane Freeway (South Alignment) Construction	5307	173,039	18,007	175,126	1,230
124	NA-0032-51	East Fork Taux Creek Bridge Replacement (Bridge # 554)	KDOT	US 59 over Taux Creek Drainage Bridge 1.06 miles east of US-59 & Taux Creek Bridge 2.7 miles east of US-59	East Fork Taux Creek Bridge (B-14) 4.15 Miles East of US-59	Bridge Replacement	88	2,667	34	1,042	1,042
131-001-60	NA-7918-51	West Fork Taux Creek Bridge Replacement (Bridge # 552)	KDOT	US 59 over West Fork of Taux Creek 1.46 N of DQPR County Line	Bridge #552, 0.54 Mile North of the Douglas/Franklin County Line	Bridge Replacement based on a 36 ft. roadway. Preservation of historic features, improvements to the substructure (piers, abutments and windows), interior improvements (stairs, walls, ADA compliance, restoration of original trim and furnishings), and mechanical/electrical systems (heating and cooling systems, light fixtures, fire suppression system, etc.)	5307	618	0	116	253
536	TE-0172-60	Santa Fe Depot Restoration	Lamarine	413 East 7th Street, Lamarine, MO	Preservation of Santa Fe Station located at 413 E 7th Street, Lamarine	Improvements to depot platform including extending the length of the brick train boarding platform, covering the boarding platform, platform lighting, landscaping, and addition of three ADA parking spaces	75	1,132	13,180	0	1,142
601	TE-0240-01	Bathurst City Depot Redevelopment	Bathurst City	1601 High Street, Bathurst City, MO	Bathurst City Depot located at 1601 High Street	Redevelopment of depot platform including extending the length of the brick train boarding platform, covering the boarding platform, platform lighting, landscaping, and addition of three ADA parking spaces	75	174	175	175	175
707	0-0664-01	Safe Routes to School	Lamarine	Lamarine	City of Lamarine	Redevelopment of depot platform including extending the length of the brick train boarding platform, covering the boarding platform, platform lighting, landscaping, and addition of three ADA parking spaces	75	19	151	0	15
9-2802-01		Safe Routes to School	KDOT	US 59 & E 1900 Road east of Lamarine	US 59 & E 1900 Road east of Lamarine	Redevelopment of depot platform including extending the length of the brick train boarding platform, covering the boarding platform, platform lighting, landscaping, and addition of three ADA parking spaces	5307	2,000	500	500	1,400

Legend
 5307 - PTA Section 5307 - Operating Assistance, Preventive Maintenance, Program Administration, & Security and Capital
 5309 - PTA Section 5309 - Capital Bus and Bus Facilities
 5310 - PTA Section 5310 - Safety and Disabled
 5317 - PTA Section 5317 - New Freedom
 5318 - PTA Section 5318 - Bus and Bus Facilities
 5319 - PTA Section 5319 - Bus and Bus Facilities
 5320 - PTA Section 5320 - Bus and Bus Facilities
 5321 - PTA Section 5321 - Bus and Bus Facilities
 5322 - PTA Section 5322 - Bus and Bus Facilities
 5323 - PTA Section 5323 - Bus and Bus Facilities
 5324 - PTA Section 5324 - Bus and Bus Facilities
 5325 - PTA Section 5325 - Bus and Bus Facilities
 5326 - PTA Section 5326 - Bus and Bus Facilities
 5327 - PTA Section 5327 - Bus and Bus Facilities
 5328 - PTA Section 5328 - Bus and Bus Facilities
 5329 - PTA Section 5329 - Bus and Bus Facilities
 5330 - PTA Section 5330 - Bus and Bus Facilities
 5331 - PTA Section 5331 - Bus and Bus Facilities
 5332 - PTA Section 5332 - Bus and Bus Facilities
 5333 - PTA Section 5333 - Bus and Bus Facilities
 5334 - PTA Section 5334 - Bus and Bus Facilities
 5335 - PTA Section 5335 - Bus and Bus Facilities
 5336 - PTA Section 5336 - Bus and Bus Facilities
 5337 - PTA Section 5337 - Bus and Bus Facilities
 5338 - PTA Section 5338 - Bus and Bus Facilities
 5339 - PTA Section 5339 - Bus and Bus Facilities
 5340 - PTA Section 5340 - Bus and Bus Facilities
 5341 - PTA Section 5341 - Bus and Bus Facilities
 5342 - PTA Section 5342 - Bus and Bus Facilities
 5343 - PTA Section 5343 - Bus and Bus Facilities
 5344 - PTA Section 5344 - Bus and Bus Facilities
 5345 - PTA Section 5345 - Bus and Bus Facilities
 5346 - PTA Section 5346 - Bus and Bus Facilities
 5347 - PTA Section 5347 - Bus and Bus Facilities
 5348 - PTA Section 5348 - Bus and Bus Facilities
 5349 - PTA Section 5349 - Bus and Bus Facilities
 5350 - PTA Section 5350 - Bus and Bus Facilities
 5351 - PTA Section 5351 - Bus and Bus Facilities
 5352 - PTA Section 5352 - Bus and Bus Facilities
 5353 - PTA Section 5353 - Bus and Bus Facilities
 5354 - PTA Section 5354 - Bus and Bus Facilities
 5355 - PTA Section 5355 - Bus and Bus Facilities
 5356 - PTA Section 5356 - Bus and Bus Facilities
 5357 - PTA Section 5357 - Bus and Bus Facilities
 5358 - PTA Section 5358 - Bus and Bus Facilities
 5359 - PTA Section 5359 - Bus and Bus Facilities
 5360 - PTA Section 5360 - Bus and Bus Facilities
 5361 - PTA Section 5361 - Bus and Bus Facilities
 5362 - PTA Section 5362 - Bus and Bus Facilities
 5363 - PTA Section 5363 - Bus and Bus Facilities
 5364 - PTA Section 5364 - Bus and Bus Facilities
 5365 - PTA Section 5365 - Bus and Bus Facilities
 5366 - PTA Section 5366 - Bus and Bus Facilities
 5367 - PTA Section 5367 - Bus and Bus Facilities
 5368 - PTA Section 5368 - Bus and Bus Facilities
 5369 - PTA Section 5369 - Bus and Bus Facilities
 5370 - PTA Section 5370 - Bus and Bus Facilities
 5371 - PTA Section 5371 - Bus and Bus Facilities
 5372 - PTA Section 5372 - Bus and Bus Facilities
 5373 - PTA Section 5373 - Bus and Bus Facilities
 5374 - PTA Section 5374 - Bus and Bus Facilities
 5375 - PTA Section 5375 - Bus and Bus Facilities
 5376 - PTA Section 5376 - Bus and Bus Facilities
 5377 - PTA Section 5377 - Bus and Bus Facilities
 5378 - PTA Section 5378 - Bus and Bus Facilities
 5379 - PTA Section 5379 - Bus and Bus Facilities
 5380 - PTA Section 5380 - Bus and Bus Facilities
 5381 - PTA Section 5381 - Bus and Bus Facilities
 5382 - PTA Section 5382 - Bus and Bus Facilities
 5383 - PTA Section 5383 - Bus and Bus Facilities
 5384 - PTA Section 5384 - Bus and Bus Facilities
 5385 - PTA Section 5385 - Bus and Bus Facilities
 5386 - PTA Section 5386 - Bus and Bus Facilities
 5387 - PTA Section 5387 - Bus and Bus Facilities
 5388 - PTA Section 5388 - Bus and Bus Facilities
 5389 - PTA Section 5389 - Bus and Bus Facilities
 5390 - PTA Section 5390 - Bus and Bus Facilities
 5391 - PTA Section 5391 - Bus and Bus Facilities
 5392 - PTA Section 5392 - Bus and Bus Facilities
 5393 - PTA Section 5393 - Bus and Bus Facilities
 5394 - PTA Section 5394 - Bus and Bus Facilities
 5395 - PTA Section 5395 - Bus and Bus Facilities
 5396 - PTA Section 5396 - Bus and Bus Facilities
 5397 - PTA Section 5397 - Bus and Bus Facilities
 5398 - PTA Section 5398 - Bus and Bus Facilities
 5399 - PTA Section 5399 - Bus and Bus Facilities
 5400 - PTA Section 5400 - Bus and Bus Facilities

Appendix E – TIP Public Participation

Task	Date	July	August	September	October	November
Discuss TIP Development with TAC and MPO Policy Board	TAC - 7/5/16 MPO - 7/21/16					
TIP Project Submission Deadline to MPO Staff	7/22/16					
Send draft to KDOT, FHWA, and FTA for review	8/1/16 - 8/8/16					
Incorporate KDOT, FHWA, and FTA comments	8/8/16 - 8/18/16					
Draft for 30 day public comment period*	8/19/16 - 9/18/16					
Send draft plan to TAC/Policy Board for Review as a part of the public comment period	8/19/16 - 9/18/16					
Incorporate public comments and other KDOT, FHWA, and FTA comments	9/19/16 - 9/20/16					
Send revised draft back to KDOT, FHWA, and FTA	9/20/16 - 9/23/16					
TAC/MPO Policy Board consideration of incorporating public comments into final TIP	TAC - 10/4/16 MPO - 10/5/16					
Pending Policy Board approval post online and send to KDOT, FHWA, and FTA	10/5/16					
Inclusion in Kansas STIP	November					

* Public participation process includes: Newspaper advertisement, email to subscription list, place document online and at public locations - Baldwin City Public Library, Eudora Public Library, Lawrence Public Library, Lecompton City Hall, and MPO Office.

TIP public comments can be viewed at www.lawrenceks.org/mpo/tip/comments.

Appendix F – TIP Project Submission Form

Project Sponsor: _____

Project Name: _____

Location (to/from location): _____

Length (mi): _____ KDOT #: _____

Project Type (choose from available options on TIP Appendix I): _____

Work Type (choose from available options on TIP Appendix I): _____

Description:

Comments:

Does this project use Advanced Construction? Yes No

Will the project occur in more than one year? Yes No

Is the project in the Current MTP's Fiscally Constrained List of Recommended Projects? Yes No

Is the project listed in the MTP as an Illustrative Project? Yes No

Does the project address a transport system issue discussed or noted in the MTP? Yes No

If so, please list the issue(s): _____

Is the project regionally significant as defined by the L-DC MPO? Yes No

Is the project identified as a TCM in the SIP? Yes No

Does this project have any ITS elements? Yes No

If yes, are the elements consistent with the approved ITS Plan? Yes No

Is the project listed and/or described in other documents or plans? Yes No

If so, list the documents:

Total Project Cost (all years, all phases in \$1,000s): _____

Local funding sources: Sales Tax, Bond, General Fund, CIP, Storm Water, etc

Appendix G – Funding Summary Table

The table below displays the fiscal breakdown by funding source for all roadway and transit projects listed in the 2017-2020 TIP. The projects are shown by year and funding source.

Estimated Expenditures by Year and Funding Source (in thousands)						
Funding Source		FFY 2017	FFY 2018	FFY 2019	FFY 2020	Total
Federal Funds	FTA 5307	\$ 2,135	\$ 2,135	\$ 2,135	\$ -	\$ 6,405
	FTA 5310	\$ 47	\$ 156	\$ -	\$ -	\$ 203
	FTA 5311	\$ 54	\$ 57	\$ -	\$ -	\$ 111
	HSIP	\$ 1,100	\$ 1,245	\$ 600	\$ 500	\$ 3,445
	STP	\$ -	\$ -	\$ -	\$ -	\$ -
	TE/TA	\$ 1,462	\$ 186	\$ -	\$ -	\$ 1,648
	HRRR	\$ 36	\$ -	\$ -	\$ -	\$ 36
	Other	\$ -	\$ -	\$ -	\$ -	\$ -
State		\$ 4,310	\$ 2,792	\$ 6,165	\$ 500	\$ 13,767
State AC Conversion*		\$ (500)	\$ (500)	\$ (500)	\$ (500)	\$ (2,000)
Local		\$ 24,404	\$ 24,332	\$ 7,474	\$ 1,470	\$ 57,680
Total		\$ 33,048	\$ 30,403	\$ 15,874	\$ 1,970	\$ 81,295

*State AC Conversions are negative because the State is receiving federal reimbursement for funds spent in previous years (as noted in the project listing).

Anticipated Funding (in thousands)					
Funding Source	FFY 2017	FFY 2018	FFY 2019	FFY 2020	Total
Federal: FTA	\$ 2,698	\$ 2,739	\$ 2,780	\$ 2,822	\$ 11,038
Federal: FHWA	\$ 10,650	\$ 10,810	\$ 10,972	\$ 11,137	\$ 43,570
State	\$ 2,604	\$ 3,366	\$ 7,183	\$ 2,723	\$ 15,877
Local	\$ 22,563	\$ 28,356	\$ 13,699	\$ 13,905	\$ 78,522
Total	\$ 38,516	\$ 45,271	\$ 34,634	\$30,587	\$149,008

Anticipated funding is based on historical TIP programs averages from FFY2012-2015 that can be reasonably expected for FFY2017-2020. Local anticipated funding also includes known bonds and other sources of local funds for FFY2017 and FFY2018. Federal and State Funding as well as FFY2019 and FFY2020 Local funds includes 1.5% inflation.

The 2008 Lawrence sales tax referendum which funds 1) Roads/Infrastructure, 2) Transit Service, and 3) Transit Operating/Capital Improvements will be sunseting in April of 2019. Decisions regarding future funding will need to be made. For the purposes of this fiscal constraint, it is assumed this funding will be available in the future.

Appendix H - Summary of TIP Changes

Costs in 1,000s



FFY 2017 - 2020 L-DC MPO Transportation Improvement Program (TIP) Revision Summary: Amendment 2

TIP #:	KDOT #:	Project Name:	Project Sponsor:	Action:	Revision Description:	Total Project Cost:
401		Independence Inc.: FTA 5311 Operating & Capital	Independence Inc.	New Project	Program operating funds in 2018. \$57 FTA 5311 funding, \$23 State funding, \$34 local funding. Program administrative operating funds in 2018. \$32 FTA 5311 funding and \$8 local funding.	\$202
409		Cwood: FTA 5310 Capital Funds	Cottonwood Inc.	New Project	Purchase a ramp mini-van. Program \$31 of FTA 5310 funding and \$8 of Local funding in 2018.	\$39
413		LPM: FTA 5310 Capital Funds	Lawrence Presbyterian Manor	New Project	Purchase a 14 passenger composite small transit bus. Program \$47 of FTA 5310 funding and \$18 of Local funding in 2018.	\$65
414		SRC DGCO: FTA 5310 Capital Funds	Senior Resource Center for Douglas County, Inc.	New Project	Purchase a ramp mini-van and full size van. Program \$78 of FTA 5310 funding and \$20 of Local funding in 2018.	\$98
604	U-0225-01	Massachusetts St, 11th to 14th St Reconfigure Lanes	Lawrence	New Project	Adding project to reconfigure lanes for center turn lane and bike amenities; programming \$20 of 2018 Local PE, \$30 of 2018 Local CONST, and \$100 of 2019 HSIP CONST funding.	\$150
205	K-9667-01	23rd Street (K-10) Access Point Consolidation	KDOT	Project Change	Shifting phase years forward one year; 2016 Local PE and ROW is now programmed in 2017; 2016 Local UTIL is programmed in 2018; 2017 State CE and CONST is programmed in 2018; 2017 Local CE and CONST is programmed in 2018.	\$421
226	U-0561-01	Harvard & Wakarusa Roundabout	Lawrence	Project Change	Revising Local ROW from 2016 to 2017 and adjusting it from \$62 to \$13. Revising 2017 Local CE funding from \$4 to \$195; 2017 Local CONST funding from \$1,400 to \$1,380; and 2017 Local PE funding from \$62 to \$20.	\$2,214
500	23TE-0373-01	Santa Fe Depot Restoration	Lawrence	Project Change	Revising 2017 TA CONST from \$1,065 to \$1,112 and 2017 Local CONST from \$266 to \$278.	\$1,501

Appendix I – TIP Project Listings

<div>1</div> <div>Project Sponsor:</div>	CDOT	<div>7</div> <div>Project Name:</div>	Access Consolidation on K-10 West of Ousdahl Rd			<div>13</div> <div>FFY</div>	<div>14</div> <div>Fund Source</div>	<div>15</div> <div>Phase</div>	<div>16</div> <div>Federal</div>	<div>State</div>	<div>Local</div>
<div>2</div> <div>TIP #:</div>	242	<div>8</div> <div>KDOT #:</div>	K-9667-10			2017	State	CONST	\$0	\$60	\$0
<div>3</div> <div>Length (mi):</div>	0.50	<div>9</div> <div>Location:</div>	K-10 W of Ousdahl Rd.			2017	Local	CONST	\$0	\$0	\$20
<div>4</div> <div>Project Type:</div>	Road	<div>10</div> <div>Work Type:</div>	Access Management								
<div>5</div> <div>Date Added:</div>	1/2016	<div>11</div> <div>Last Revised:</div>	10/2016								
<div>6</div> <div>Description:</div>	Access Improvements			<div>12</div> <div>Comments:</div>							
						<div>17</div> <div>Federal Total:</div>	\$0	<div>18</div> <div>Non-Federal Total:</div>	\$80	<div>19</div> <div>Grand Total:</div>	\$80

<div>1</div> <div>Project Sponsor:</div>	Agency responsible for project			<div>11</div> <div>Last Revised:</div>	Date of most recent project adjustment and amendment/revision number			<div>16</div> <div>Funding:</div>	Federal, State, or Local funding shown in 1,000s		
<div>2</div> <div>TIP #:</div>	MPO assigned number based on project type:			<div>12</div> <div>Comments:</div>	Include notes or observations about the project, not included in the other categories.			<div>17</div> <div>Federal Total:</div>	Total federal funding		
<div>3</div> <div>Length (mi):</div>	Measures the length or distance of the project			<div>13</div> <div>FFY:</div>	Federal Fiscal Year – October 1 – September 30			<div>18</div> <div>Non-Federal Total:</div>	Total non-federal (state and local) funding		
<div>4</div> <div>Project Type:</div>	Classified into categories:			<div>14</div> <div>Fund Source:</div>	National Highway Performance Program (NHPP) Surface Transportation Program (STP) Highway Safety Improvement Program (HSIP) Railway-Highway Crossings (set-aside from HSIP) Transportation Alternatives (TA) –includes Safe Routes To School funding Urban Area Formula Grants (5307) Rural Area Formula Grants (5311)			<div>19</div> <div>Grand Total:</div>	Total amount of funding for the project		
<div>5</div> <div>Date Added:</div>	Date incorporated into the TIP										
<div>6</div> <div>Description:</div>	Brief definition of the range of the project's work and tasks included										
<div>7</div> <div>Project Name:</div>	General project name to identify the project										
<div>8</div> <div>KDOT #:</div>	Assigned by KDOT for each state administered and/or funded project (including projects for which KDOT provides federal money to the local government)										
<div>9</div> <div>Location:</div>	Identifies the starting and ending point of project										
<div>10</div> <div>Work Type:</div>	Classified into categories:										
<div>11</div> <div>Last Revised:</div>	Date of most recent project adjustment and amendment/revision number			<div>12</div> <div>Comments:</div>	Include notes or observations about the project, not included in the other categories.			<div>13</div> <div>FFY:</div>	Federal Fiscal Year – October 1 – September 30		
<div>12</div> <div>Comments:</div>				<div>14</div> <div>Fund Source:</div>	National Highway Performance Program (NHPP) Surface Transportation Program (STP) Highway Safety Improvement Program (HSIP) Railway-Highway Crossings (set-aside from HSIP) Transportation Alternatives (TA) –includes Safe Routes To School funding Urban Area Formula Grants (5307) Rural Area Formula Grants (5311)			<div>15</div> <div>Phase:</div>	PE – Preliminary Engineering ROW – Right of Way CE – Construction Engineering CONST – Construction CAP – Capital OP – Operating UTIL - Utilities		
<div>13</div> <div>FFY:</div>	Federal Fiscal Year – October 1 – September 30			<div>14</div> <div>Fund Source:</div>	National Highway Performance Program (NHPP) Surface Transportation Program (STP) Highway Safety Improvement Program (HSIP) Railway-Highway Crossings (set-aside from HSIP) Transportation Alternatives (TA) –includes Safe Routes To School funding Urban Area Formula Grants (5307) Rural Area Formula Grants (5311)			<div>15</div> <div>Phase:</div>	PE – Preliminary Engineering ROW – Right of Way CE – Construction Engineering CONST – Construction CAP – Capital OP – Operating UTIL - Utilities		
<div>14</div> <div>Fund Source:</div>	National Highway Performance Program (NHPP) Surface Transportation Program (STP) Highway Safety Improvement Program (HSIP) Railway-Highway Crossings (set-aside from HSIP) Transportation Alternatives (TA) –includes Safe Routes To School funding Urban Area Formula Grants (5307) Rural Area Formula Grants (5311)			<div>15</div> <div>Phase:</div>	PE – Preliminary Engineering ROW – Right of Way CE – Construction Engineering CONST – Construction CAP – Capital OP – Operating UTIL - Utilities			<div>16</div> <div>Funding:</div>	Federal, State, or Local funding shown in 1,000s		
<div>15</div> <div>Phase:</div>	PE – Preliminary Engineering ROW – Right of Way CE – Construction Engineering CONST – Construction CAP – Capital OP – Operating UTIL - Utilities			<div>16</div> <div>Funding:</div>	Federal, State, or Local funding shown in 1,000s			<div>17</div> <div>Federal Total:</div>	Total federal funding		
<div>16</div> <div>Funding:</div>	Federal, State, or Local funding shown in 1,000s			<div>17</div> <div>Federal Total:</div>	Total federal funding			<div>18</div> <div>Non-Federal Total:</div>	Total non-federal (state and local) funding		
<div>17</div> <div>Federal Total:</div>	Total federal funding			<div>18</div> <div>Non-Federal Total:</div>	Total non-federal (state and local) funding			<div>19</div> <div>Grand Total:</div>	Total amount of funding for the project		
<div>18</div> <div>Non-Federal Total:</div>	Total non-federal (state and local) funding			<div>19</div> <div>Grand Total:</div>	Total amount of funding for the project						
<div>19</div> <div>Grand Total:</div>	Total amount of funding for the project										

Lawrence-Douglas County MPO
FFY 2017 - 2020 Transportation Improvement Program Projects (Costs in 1,000s)
 (Includes the Program of Projects for the Lawrence Transit System)

Project Sponsor: KDOT

TIP #: 103

Length (mi): 0.00

Project Type: Bridge

Date Added: 2/2017

Description:

Bridge Replacement

Project Name: US 56 Taury Creek Drainage Bridge

KDOT #: KA-0033-01

Location: Bridge 1.95 miles east of US 59 & Taury Creek Bridge 2.7 miles east of IIS-59

Work Type: Bridge Replacement

Last Revised:

Comments:

Amendment to revise the source of local match to the use of Toll Credits. The Federal amount of STP reflects the change to Toll Credits. The State amount reflects the non-participating amount of the project.

FFY	Fund Source	Phase	Federal	State	Local
2010	STP	PE	\$362	\$0	\$0
2010	State	PE	\$0	\$26	\$0
2012	STP	UTIL	\$206	\$0	\$0
2013	STP	CE	\$98	\$0	\$0
2013	State	CE	\$0	\$6	\$0
2013	STP	CONST	\$2,092	\$0	\$0
2013	State	CONST	\$0	\$23	\$0
2013	State	ROW	\$0	\$223	\$0

Federal Total:	\$2,758	Non-Federal Total:	\$278	Grand Total:	\$3,036
-----------------------	---------	---------------------------	-------	---------------------	---------

Project Sponsor: Douglas County

TIP #: 106

Length (mi): 1.70

Project Type: Road

Date Added: 10/2016

Description:

New road construction to extend Wakarusa Drive from planned K-10 interchange to Route 458. Includes new bridge over Wakarusa River.
 *Alignment not finalized

Project Name: Wakarusa Drive Extension

KDOT #:

Location: Rte 458 to planned K-10 interchange at Wakarusa Drive

Work Type: Grading, Bridge, Surfacing

Last Revised: 2/2017

Comments:

Construction contingent on KDOT construction of K-10 interchange at Wakarusa Drive. Changed TIP # from 100 to 106 in 2/2017 - this amendment makes no changes to scope or funding.

FFY	Fund Source	Phase	Federal	State	Local
2018	Local	PE	\$0	\$0	\$300
2019	Local	PE	\$0	\$0	\$300
2020	Local	ROW	\$0	\$0	\$250
2020	Local	UTIL	\$0	\$0	\$20
2021	Local	CONST	\$0	\$0	\$8,000

Federal Total:	\$0	Non-Federal Total:	\$8,870	Grand Total:	\$8,870
-----------------------	-----	---------------------------	---------	---------------------	---------

Lawrence-Douglas County MPO
FFY 2017 - 2020 Transportation Improvement Program Projects (Costs in 1,000s)
 (Includes the Program of Projects for the Lawrence Transit System)

Project Sponsor: Lawrence

Project Name: Kasold Reconstruction:
Clinton Parkway to HyVee

TIP #: 107

KDOT #:

Length (mi): 0.20

Location: Kasold from 22nd Street to
Clinton Parkway

Project Type: Road

Work Type: Reconstruction

Date Added: 10/2016

Last Revised: 2/2017

Description:

Reconstruction of street including
pavement, storm sewer, sidewalks,
bicycle facilities, and median.

Comments:

Included in 2018 CIP. Changed TIP # from
101 to 107 in 2/2017 - this amendment
makes no changes to scope or funding.

FFY	Fund Source	Phase	Federal	State	Local
2017	Local	PE	\$0	\$0	\$100
2018	Local	CONST	\$0	\$0	\$1,000

Federal Total:	\$0	Non-Federal Total:	\$1,100	Grand Total:	\$1,100
-----------------------	-----	---------------------------	---------	---------------------	---------

Project Sponsor: Lawrence

Project Name: Wakarusa Reconstruction:
18th to 23rd St

TIP #: 108

KDOT #:

Length (mi): 0.60

Location: Wakarusa - 18th to 23rd St

Project Type: Road

Work Type: Reconstruction

Date Added: 10/2016

Last Revised: 2/2017

Description:

Reconstruction of street including
pavement, storm sewer, sidewalks,
bicycle facilities, and median

Comments:

Included in CIP. Changed TIP # from 102 to
108 in 2/2017 - this amendment makes no
changes to scope or funding.

FFY	Fund Source	Phase	Federal	State	Local
2020	Local	PE	\$0	\$0	\$250
2021	Local	CONST	\$0	\$0	\$2,500

Federal Total:	\$0	Non-Federal Total:	\$2,750	Grand Total:	\$2,750
-----------------------	-----	---------------------------	---------	---------------------	---------

Lawrence-Douglas County MPO
FFY 2017 - 2020 Transportation Improvement Program Projects (Costs in 1,000s)
 (Includes the Program of Projects for the Lawrence Transit System)

Project Sponsor: KDOT

Project Name: South Lawrence Trafficway/K-10 West Leg in DG Co.

TIP #: 109

KDOT #: KA-3634-04

Length (mi): 0.00

Location: K-10: 2000 ft W of Junction K-10/E 1200 Rd to 1500 ft E of Junction of K-10/E 1200 Rd

Project Type: Intersection

Work Type: Reconstruction

Date Added: 10/2016

Last Revised: 2/2017

Description:

Conversion of Standard Stop Controlled intersection to Right In - Right Out configuration

Comments:

Project lets in Sept '17. Changed TIP # from 103 to 109 in 2/2017 - this amendment makes no changes to scope or funding.

FFY	Fund Source	Phase	Federal	State	Local
2016	State	CE	\$0	\$4	\$0
2016	State	CONST	\$0	\$69	\$0
2016	State	PE	\$0	\$231	\$0

Federal Total: \$0 **Non-Federal Total:** \$304 **Grand Total:** \$304

Project Sponsor: KDOT

Project Name: 23rd St 2 Way Left Turn Lane

TIP #: 110

KDOT #: KA-4473-04

Length (mi): 0.32

Location: 23rd St: Louisiana St to Massachusetts St

Project Type: Road

Work Type: Special Work

Date Added: 2/2017

Last Revised:

Description:

Construction of a 2 way left turn lane on 23rd St from Louisiana St to Massachusetts St

Comments:

This project is part of the 23rd St KDOT/City turn back agreement. This agreement, including final project(s) cost share, has not been finalized to date.

FFY	Fund Source	Phase	Federal	State	Local
2019	State	CONST	\$0	\$500	\$0

Federal Total: \$0 **Non-Federal Total:** \$500 **Grand Total:** \$500

Lawrence-Douglas County MPO
FFY 2017 - 2020 Transportation Improvement Program Projects (Costs in 1,000s)
 (Includes the Program of Projects for the Lawrence Transit System)

Project Sponsor: KDOT **Project Name:** 23rd St Resurfacing: Iowa St to Ousdahl Rd

TIP #: 111 **KDOT #:** KA-4473-03

Length (mi): 0.25 **Location:** 23rd St: Iowa St to Ousdahl Rd

Project Type: Road **Work Type:** Surfacing

Date Added: 2/2017 **Last Revised:**

Description:
 Resurfacing 23rd St from Iowa St to Ousdahl St **Comments:**
 This project is part of the 23rd St KDOT/City turn back agreement. This agreement, including final project(s) cost share, has not been finalized to date.

FFY	Fund Source	Phase	Federal	State	Local
2018	State	CONST	\$0	\$300	\$0
Federal Total:			\$0	Non-Federal Total: \$300	Grand Total: \$300

Project Sponsor: KDOT **Project Name:** South Lawrence Trafficway

TIP #: 200 **KDOT #:** K-8392-04

Length (mi): 5.96 **Location:** SO Junct US 59/K10 E to K10

Project Type: Road **Work Type:** Special Work, Right of Way

Date Added: 10/2014 **Last Revised:** 7/2016

Description:
 Linked to Project L-8392-01. **Comments:**
 Revise the source of local match for the use of toll credits- Fed amount of NHPP/STP reflect change to toll credits. State \$ reflects non-participating amount of project.

FFY	Fund Source	Phase	Federal	State	Local
2016	STP/NHPP	CONST/CE	\$143,662	\$0	\$0
2016	STP/NHPP	PE	\$9,049	\$0	\$0
2016	State	PE/R/U/C/CE	\$0	\$4,030	\$0
2016	STP/NHPP	UTIL	\$18,743	\$0	\$0
Federal Total:			\$171,454	Non-Federal Total: \$4,030	Grand Total: \$175,484

Lawrence-Douglas County MPO
FFY 2017 - 2020 Transportation Improvement Program Projects (Costs in 1,000s)
 (Includes the Program of Projects for the Lawrence Transit System)

Project Sponsor: Douglas County **Project Name:** Route 458 3-R Improvements

TIP #: 201 **KDOT #:**
Length (mi): 4.30 **Location:** Route 458 between E 800 Rd & N 1175 Rd Douglas County

Project Type: Road **Work Type:** Surfacing, Reconstruction

Date Added: 10/2014 **Last Revised:**

Description: 3-R Improvements (restoration, resurfacing, reconstruction). **Comments:** Const in 2017.

FFY	Fund Source	Phase	Federal	State	Local
2015	Local	PE	\$0	\$0	\$480
2016	Local	ROW	\$0	\$0	\$300
2016	Local	UTIL	\$0	\$0	\$200
2017	Local	CONST	\$0	\$0	\$5,000

Federal Total: \$0 **Non-Federal Total:** \$5,980 **Grand Total:** \$5,980

Project Sponsor: Lawrence **Project Name:** 19th Street: Naismith to Iowa Reconstruction

TIP #: 203 **KDOT #:**
Length (mi): 0.50 **Location:** 19th St from Iowa to Naismith

Project Type: Road **Work Type:** Grading, Surfacing

Date Added: 10/2014 **Last Revised:** 10/2016

Description: Reconstruction of street will include subgrade treatment, surfacing, storm sewer, geometric improvements and multimodal facilities. **Comments:**

FFY	Fund Source	Phase	Federal	State	Local
2017	Local	PE	\$0	\$0	\$200
2018	Local	CONST	\$0	\$0	\$1,800

Federal Total: \$0 **Non-Federal Total:** \$2,000 **Grand Total:** \$2,000

Lawrence-Douglas County MPO
FFY 2017 - 2020 Transportation Improvement Program Projects (Costs in 1,000s)
 (Includes the Program of Projects for the Lawrence Transit System)

Project Sponsor: Lawrence

Project Name: Kasold Reconstruction: 6th St to Bob Billings Pkwy

TIP #: 204

KDOT #:

Length (mi): 1.00

Location: Kasold Drive: 6th St to Bob Billings Pkwy

Project Type: Road

Work Type: Grading, Surfacing

Date Added: 10/2014

Last Revised: 2/2017

Description:

Reconstruction of street will include subgrade treatment, concrete pavement, traffic signal at Kasold and Harvard, and multi-modal facilities.

Comments:

FFY	Fund Source	Phase	Federal	State	Local
2015	Local	UTIL	\$0	\$0	\$500
2017	Local	CONST	\$0	\$0	\$6,000

Federal Total:	\$0	Non-Federal Total:	\$6,500	Grand Total:	\$6,500
-----------------------	-----	---------------------------	---------	---------------------	---------

Project Sponsor: KDOT

Project Name: 23rd Street (K-10) Access Point Consolidation

TIP #: 205

KDOT #: K-9667-01

Length (mi): 3.00

Location: 23rd St. (K-10) from US 59 (Iowa St.) E to O'Connell Rd.

Project Type: Road

Work Type: Access Management

Date Added: 10/2014

Last Revised: 8/2017

Description:

Consolidation of Access Points

Comments:

FFY	Fund Source	Phase	Federal	State	Local
2017	Local	PE	\$0	\$0	\$67
2017	Local	ROW	\$0	\$0	\$123
2018	State	CE	\$0	\$26	\$0
2018	Local	CE	\$0	\$0	\$76
2018	State	CONST	\$0	\$78	\$0
2018	Local	CONST	\$0	\$0	\$26
2018	Local	UTIL	\$0	\$0	\$25

Federal Total:	\$0	Non-Federal Total:	\$421	Grand Total:	\$421
-----------------------	-----	---------------------------	-------	---------------------	-------

Lawrence-Douglas County MPO
FFY 2017 - 2020 Transportation Improvement Program Projects (Costs in 1,000s)
 (Includes the Program of Projects for the Lawrence Transit System)

Project Sponsor: Douglas County **Project Name:** Route 1055 at North 700 Curve

TIP #: 208 **KDOT #:**

Length (mi): 0.50 **Location:** Route 1055 from 725 North to 1675 East

Project Type: Road **Work Type:** Geometric Improvement, Bridge Replacement

Date Added: 10/2014 **Last Revised:** 10/2016

Description:
 Reconstruct curve, replace two bridges and one culvert

Comments:

FFY	Fund Source	Phase	Federal	State	Local
2016	Local	ROW	\$0	\$0	\$250
2018	Local	PE	\$0	\$0	\$120
2018	Local	ROW	\$0	\$0	\$10
2019	Local	UTIL	\$0	\$0	\$20
2020	Local	CONST	\$0	\$0	\$950
Federal Total:			\$0	Non-Federal Total: \$1,350	Grand Total: \$1,350

Project Sponsor: Lawrence **Project Name:** 9th Street Reconstruction

TIP #: 212 **KDOT #:**

Length (mi): 0.45 **Location:** Massachusetts St to Delaware St

Project Type: Road **Work Type:** Grading, Surfacing

Date Added: 10/2014 **Last Revised:** 7/2016

Description:
 Reconstruction of street will include subgrade treatment, surfacing, storm sewer, geometric improvements and multimodal facilities.

Comments:

FFY	Fund Source	Phase	Federal	State	Local
2015	Local	PE	\$0	\$0	\$300
2018	Local	CONST	\$0	\$0	\$3,000
2018	Local	UTIL	\$0	\$0	\$300
Federal Total:			\$0	Non-Federal Total: \$3,600	Grand Total: \$3,600



Lawrence-Douglas County MPO FFY 2017 - 2020 Transportation Improvement Program Projects (Costs in 1,000s)

(Includes the Program of Projects for the Lawrence Transit System)

Project Sponsor: Lawrence

Project Name: Wakarusa Reconstruction
(North)

TIP #: 213

KDOT #:

Length (mi): 0.50

Location: North of Inverness/Legends to
6th St

Project Type: Road

Work Type: Grading, Surfacing

Date Added: 10/2014

Last Revised:

Description:

Reconstruction of street will include subgrade treatment, surfacing, storm sewer, geometric improvements and multimodal facilities.

Comments:

Linked to project #226.

FFY	Fund Source	Phase	Federal	State	Local
2016	Local	PE	\$0	\$0	\$150
2017	Local	CONST	\$0	\$0	\$3,500

Federal Total:	\$0	Non-Federal Total:	\$3,650	Grand Total:	\$3,650
-----------------------	-----	---------------------------	---------	---------------------	---------

Project Sponsor: Lawrence

Project Name: Wakarusa Reconstruction
(South)

TIP #: 214

KDOT #:

Length (mi): 0.22

Location: Research Parkway to 18th Street

Project Type: Road

Work Type: Grading, Surfacing

Date Added: 10/2014

Last Revised:

Description:

Reconstruction of street will include subgrade treatment, surfacing, storm sewer, geometric improvements and multimodal facilities.

Comments:

FFY	Fund Source	Phase	Federal	State	Local
2017	Local	PE	\$0	\$0	\$100
2019	Local	CONST	\$0	\$0	\$2,500

Federal Total:	\$0	Non-Federal Total:	\$2,600	Grand Total:	\$2,600
-----------------------	-----	---------------------------	---------	---------------------	---------

Lawrence-Douglas County MPO
FFY 2017 - 2020 Transportation Improvement Program Projects (Costs in 1,000s)
 (Includes the Program of Projects for the Lawrence Transit System)

Project Sponsor: Douglas County **Project Name:** Route 458 Improvements, E1500 to E1600

TIP #: 219 **KDOT #:**

Length (mi): 1.00 **Location:** E1500 to E1600

Project Type: Road **Work Type:** Grading, Surfacing

Date Added: 8/2015 **Last Revised:**

Description:
 Construct paved shoulders; replace narrow culvert; flatten roadside slope

Comments:

FFY	Fund Source	Phase	Federal	State	Local
2017	Local	ROW	\$0	\$0	\$30
2018	Local	UTIL	\$0	\$0	\$40
2019	Local	CONST	\$0	\$0	\$1,130

Federal Total: \$0 **Non-Federal Total:** \$1,200 **Grand Total:** \$1,200

Project Sponsor: Douglas County **Project Name:** Route 1055 Improvements, N1000 to N1180

TIP #: 220 **KDOT #:**

Length (mi): 1.80 **Location:** N1000 to N1180

Project Type: Road **Work Type:** Grading, Surfacing

Date Added: 8/2015 **Last Revised:**

Description:
 Construct paved shoulders; replace narrow culvert; flatten roadside slope

Comments:

FFY	Fund Source	Phase	Federal	State	Local
2017	Local	ROW	\$0	\$0	\$45
2017	Local	UTIL	\$0	\$0	\$70
2018	Local	CONST	\$0	\$0	\$1,885

Federal Total: \$0 **Non-Federal Total:** \$2,000 **Grand Total:** \$2,000

Lawrence-Douglas County MPO

FFY 2017 - 2020 Transportation Improvement Program Projects (Costs in 1,000s)

(Includes the Program of Projects for the Lawrence Transit System)

Project Sponsor: Douglas County **Project Name:** Bridge 1000-1638 Replacement

TIP #: 222 **KDOT #:**

Length (mi): 0.17 **Location:** Rte 458 .38 mi east of Rte 1055

Project Type: Bridge **Work Type:** Bridge Replacement

Date Added: 8/2015 **Last Revised:**

Description: Replace Rte 458 bridge over Coal Creek **Comments:** Includes replacing Br No. 1001-1649; PE completed 2014' ROW/Utilities completed 2015

FFY	Fund Source	Phase	Federal	State	Local
2013	Local	PE	\$0	\$0	\$69
2014	Local	PE	\$0	\$0	\$67
2015	Local	PE	\$0	\$0	\$4
2015	Local	ROW	\$0	\$0	\$3
2016	Local	CONST	\$0	\$0	\$795
Federal Total:			\$0	Non-Federal Total: \$938	Grand Total: \$938

Project Sponsor: Douglas County **Project Name:** Bridge 0064-0550 Replacement

TIP #: 224 **KDOT #:**

Length (mi): 0.10 **Location:** Rte 1029 .6 mi North of N1 Rd

Project Type: Bridge **Work Type:** Bridge Replacement

Date Added: 8/2015 **Last Revised:**

Description: Replace Bridge **Comments:**

FFY	Fund Source	Phase	Federal	State	Local
2016	Local	PE	\$0	\$0	\$41
2016	Local	ROW	\$0	\$0	\$10
2016	Local	UTIL	\$0	\$0	\$10
2017	Local	CONST	\$0	\$0	\$625
Federal Total:			\$0	Non-Federal Total: \$686	Grand Total: \$686

Lawrence-Douglas County MPO
FFY 2017 - 2020 Transportation Improvement Program Projects (Costs in 1,000s)
 (Includes the Program of Projects for the Lawrence Transit System)

Project Sponsor: Douglas County **Project Name:** Culvert 1500-1624 Replacement

TIP #: 225 **KDOT #:**

Length (mi): 0.10 **Location:** N 1500 Rd/E 15th St. at E 1625 Rd Intersection

Project Type: Road **Work Type:** Grading, Surfacing

Date Added: 8/2015 **Last Revised:**

Description: Replace narrow culverts, channel improvements **Comments:** South half N1500 Rd in City Limits

FFY	Fund Source	Phase	Federal	State	Local
2016	Local	ROW	\$0	\$0	\$20
2016	Local	UTIL	\$0	\$0	\$20
2017	Local	CONST	\$0	\$0	\$460
Federal Total:			\$0	Non-Federal Total: \$500	Grand Total: \$500

Project Sponsor: Lawrence **Project Name:** Harvard & Wakarusa Roundabout

TIP #: 226 **KDOT #:** U-0561-01

Length (mi): 0.24 **Location:** Harvard & Wakarusa Intersection

Project Type: Intersection **Work Type:** Geometric/Intersection Improvements

Date Added: 8/2015 **Last Revised:** 8/2017

Description: Convert All Way Stop controlled intersection to two lane roundabout **Comments:** PE/ROW are each estimated at 10% of Construction Costs. Linked to project #213.

FFY	Fund Source	Phase	Federal	State	Local
2015	State	PE	\$0	\$6	\$0
2017	Local	CE	\$0	\$0	\$195
2017	HSIP	CE	\$36	\$0	\$0
2017	Local	CONST	\$0	\$0	\$1,380
2017	HSIP	CONST	\$564	\$0	\$0
2017	Local	PE	\$0	\$0	\$20
2017	Local	ROW	\$0	\$0	\$13
Federal Total:			\$600	Non-Federal Total: \$1,614	Grand Total: \$2,214

Lawrence-Douglas County MPO
FFY 2017 - 2020 Transportation Improvement Program Projects (Costs in 1,000s)
 (Includes the Program of Projects for the Lawrence Transit System)

Project Sponsor: Lawrence

Project Name: 19th Street Reconstruction,
O'Connell to Harper

TIP #: 229

KDOT #:

Length (mi): 0.54

Location: O'Connell to Harper

Project Type: Road

Work Type: Reconstruction

Date Added: 8/2015

Last Revised: 7/2016

Description:

Reconstruct & tie into venture park, roundabout at 19th & harper, construct sidewalk & bike lanes

Comments:

PE/ROW are each estimated at 10% of Construction Costs

FFY	Fund Source	Phase	Federal	State	Local
2018	Local	CONST	\$0	\$0	\$2,500
2018	Local	PE	\$0	\$0	\$250
2018	Local	ROW	\$0	\$0	\$250

Federal Total:	\$0	Non-Federal Total:	\$3,000	Grand Total:	\$3,000
-----------------------	-----	---------------------------	---------	---------------------	---------

Project Sponsor: Lawrence

Project Name: Queens Road, 6th to North City Limits

TIP #: 230

KDOT #:

Length (mi): 0.75

Location: 6th Street to North City Limits

Project Type: Road

Work Type: Reconstruction

Date Added: 8/2015

Last Revised: 10/2016

Description:

Construct Queens Road, roundabout at Overland & Wakarusa, construct sidewalk & bike lanes

Comments:

PE/ROW are each estimated at 10% of Construction Costs

FFY	Fund Source	Phase	Federal	State	Local
2015	Local	ROW	\$0	\$0	\$600
2016	Local	PE	\$0	\$0	\$200
2018	Local	CONST	\$0	\$0	\$3,000

Federal Total:	\$0	Non-Federal Total:	\$3,800	Grand Total:	\$3,800
-----------------------	-----	---------------------------	---------	---------------------	---------

Lawrence-Douglas County MPO
FFY 2017 - 2020 Transportation Improvement Program Projects (Costs in 1,000s)
 (Includes the Program of Projects for the Lawrence Transit System)

Project Sponsor: Lawrence **Project Name:** 23rd & Ousdahl Storm Sewer Improvements

TIP #: 232 **KDOT #:** KA-4473-02

Length (mi): **Location:** 23rd & Ousdahl Intersection

Project Type: Intersection **Work Type:** Intersection Improvements

Date Added: 8/2015 **Last Revised:** 2/2017

Description:
 Geometric Improvements & Storm Sewer

Comments:
 PE/ROW are each estimated at 10% of Construction Costs. This project is part of the 23rd St KDOT/City turn back agreement. This agreement, including final project(s) cost share, has not been finalized to date.

FFY	Fund Source	Phase	Federal	State	Local
2016	Local	ROW	\$0	\$0	\$250
2017	Local	CONST	\$0	\$0	\$2,500
2017	Local	PE	\$0	\$0	\$250
2018	State	CONST	\$0	\$700	\$0
2018	Local	CONST	\$0	\$0	\$300
Federal Total:			\$0	Non-Federal Total: \$4,000	Grand Total: \$4,000

Project Sponsor: Lawrence **Project Name:** 23rd Street Reconstruction, Haskell to East City Limits

TIP #: 234 **KDOT #:** KA-4473-01

Length (mi): 2.01 **Location:** Haskell to East City Limits

Project Type: Road **Work Type:** Reconstruction

Date Added: 8/2015 **Last Revised:** 2/2017

Description:

Comments:
 PE/ROW are each estimated at 10% of Construction Costs. Project is part of the 23rd St KDOT/City turn back agreement. This agreement, including final project(s) cost share, has not been finalized to date.

FFY	Fund Source	Phase	Federal	State	Local
2017	Local	ROW	\$0	\$0	\$600
2018	Local	CONST	\$0	\$0	\$6,000
2018	Local	PE	\$0	\$0	\$600
2019	State	CONST	\$0	\$4,000	\$0
Federal Total:			\$0	Non-Federal Total: \$11,200	Grand Total: \$11,200

Lawrence-Douglas County MPO
FFY 2017 - 2020 Transportation Improvement Program Projects (Costs in 1,000s)
 (Includes the Program of Projects for the Lawrence Transit System)

Project Sponsor: KDOT TIP #: 236 Length (mi): 1.20 Project Type: Road/Interchange Date Added: 1/2016 Description: Add 2 lanes to existing 2 lanes for a 4 lane freeway section. This will include reconstruction of existing interchange @ KTA (I-70). A mainline ORT (open road tolling) toll plaza on K-10 is included in reconstruction of interchange @ I-70.	Project Name: SLT/K-10 West Leg in Douglas County KDOT #: KA-3634-02 Location: I-70/K10 Junction South to 3500 ft N of K-10/US-40 Junction Work Type: Interchange/Reconstruction Last Revised: Comments: Project is authorized for PE only. The total project cost, including all work phases, is estimated at \$73,775 K. This estimate should be used for planning purposes only.	FFY	Fund Source	Phase	Federal	State	Local
		2016	State	PE	\$0	\$4,200	\$0
		Federal Total:		\$0	Non-Federal Total:	\$4,200	Grand Total:

Project Sponsor: KDOT TIP #: 237 Length (mi): 7.00 Project Type: Road/Interchange Date Added: 1/2016 Description: Add 2 lanes to existing 2 lanes for a 4 lane freeway section. Includes existing interchanges @ US-40, Bob Billings, Clinton & US-59. New interchange approx. .8 mi east of Wakarusa/27th St intersection. Kasold Dr intersection will be RI-RO [Project #109]	Project Name: SLT/K-10 West Leg in Douglas County KDOT #: KA-3634-03 Location: 3500 ft N of K-10/US-40 Junction,to K-10 US-59/Iowa St Junction Work Type: Interchange/Reconstruction Last Revised: Comments: Project is authorized for PE only. The total project cost, including all work phases, is estimated at \$159,800 K. This estimate should be used for planning purposes only.	FFY	Fund Source	Phase	Federal	State	Local
		2016	State	PE	\$0	\$10,800	\$0
		Federal Total:		\$0	Non-Federal Total:	\$10,800	Grand Total:

Lawrence-Douglas County MPO
FFY 2017 - 2020 Transportation Improvement Program Projects (Costs in 1,000s)
 (Includes the Program of Projects for the Lawrence Transit System)

Project Sponsor: KDOT

Project Name: Access Consolidation on K-10
 West of Ousdahl Rd

TIP #: 242

KDOT #: K-9667-10

Length (mi): 0.50

Location: K-10 W of Ousdahl Rd.

Project Type: Road

Work Type: Access Management

Date Added: 1/2016

Last Revised: 10/2016

Description:
 Access Improvements

Comments:

FFY	Fund Source	Phase	Federal	State	Local
2017	State	CONST	\$0	\$60	\$0
2017	Local	CONST	\$0	\$0	\$20

Federal Total: \$0 **Non-Federal Total:** \$80 **Grand Total:** \$80

Project Sponsor: KDOT

Project Name: US-56 Improvements from
 Eisenhower St to 1st St

TIP #: 243

KDOT #: KA-4365-01

Length (mi): 0.30

Location: Eisenhower St to 1st St

Project Type: Road

Work Type: Other/Reconstruction

Date Added: 7/2016

Last Revised:

Description:
 Improvements to US-56 - Realign
 Eisenhower and construct 3 lane
 US-56 in Baldwin City

Comments:

FFY	Fund Source	Phase	Federal	State	Local
2017	State	CONST	\$0	\$1,675	\$0

Federal Total: \$0 **Non-Federal Total:** \$1,675 **Grand Total:** \$1,675

Lawrence-Douglas County MPO
FFY 2017 - 2020 Transportation Improvement Program Projects (Costs in 1,000s)
 (Includes the Program of Projects for the Lawrence Transit System)

Project Sponsor: KDOT **Project Name:** Install Permanent Signal at K-10 at US-59/CR 458

TIP #: 300 **KDOT #:** KA-3634-06

Length (mi): 0.00 **Location:** K-10 at US-59/CR 458

Project Type: Traffic Signal **Work Type:** Signal

Date Added: 10/2016 **Last Revised:**

Description: Installation of a permanent signal **Comments:** Project lets in March '17

FFY	Fund Source	Phase	Federal	State	Local
2016	State	PE	\$0	\$43	\$0
2017	State	CE	\$0	\$43	\$0
2017	State	CONST	\$0	\$850	\$0

Federal Total: \$0 **Non-Federal Total:** \$936 **Grand Total:** \$936

Project Sponsor: Independence Inc. **Project Name:** Independence Inc.: FTA 5311 Operating & Capital

TIP #: 401 **KDOT #:**

Length (mi): **Location:** Lawrence

Project Type: Transit/Paratransit **Work Type:** Operating/Capital

Date Added: 10/2014 **Last Revised:** 8/2017

Description: Operating **Comments:** 2017 - 5311 Admin- \$25, Local Admin \$6;
2018 - 5311 Admin- \$32, Local Admin \$8

FFY	Fund Source	Phase	Federal	State	Local
2017	State	OP	\$0	\$11	\$0
2017	Local	OP	\$0	\$0	\$23
2017	5311	OP	\$54	\$0	\$0
2018	State	OP	\$0	\$23	\$0
2018	Local	OP	\$0	\$0	\$34
2018	5311	OP	\$57	\$0	\$0

Federal Total: \$111 **Non-Federal Total:** \$91 **Grand Total:** \$202

Lawrence-Douglas County MPO
FFY 2017 - 2020 Transportation Improvement Program Projects (Costs in 1,000s)
 (Includes the Program of Projects for the Lawrence Transit System)

Project Sponsor: Lawrence Transit **Project Name:** Operating Funds

TIP #: 402 **KDOT #:** 5307 FTA

Length (mi): 0.00 **Location:** Lawrence

Project Type: Transit/Paratransit **Work Type:** Operating

Date Added: 10/2014 **Last Revised:** 10/2016

Description:
 Operating and Preventative Maintenance activities

Comments:
 Federal Transit 5307 Funds. Not included in fiscal constraint. Previous unspent balances. Linked with project #412.

FFY	Fund Source	Phase	Federal	State	Local
2012	Local	OP	\$0	\$0	\$13
2012	5307	OP	\$50	\$0	\$0
2014	Local	OP	\$0	\$0	\$18
2014	5307	OP	\$100	\$0	\$0
2015	Local	OP	\$0	\$0	\$18
2015	5307	OP	\$100	\$0	\$0
2016	Local	OP	\$0	\$0	\$1,524
2016	5307	OP	\$2,135	\$0	\$0

Federal Total: \$2,385 **Non-Federal Total:** \$1,573 **Grand Total:** \$3,958

Project Sponsor: Lawrence Transit **Project Name:** Transit Capital Assistance

TIP #: 403 **KDOT #:** PT-0701

Length (mi): **Location:** Lawrence

Project Type: Transit/Paratransit **Work Type:** Special Work

Date Added: 10/2014 **Last Revised:** 10/2016

Description:
 Comprehensive Transportation Program. Purchase of replacement paratransit vehicles.

Comments:
 StateCTP

FFY	Fund Source	Phase	Federal	State	Local
2015	State	CAP	\$0	\$500	\$0
2015	State	OP	\$0	\$558	\$0
2016	State	CAP	\$0	\$500	\$0
2016	State	OP	\$0	\$640	\$0
2017	State	CAP	\$0	\$500	\$0
2017	State	OP	\$0	\$665	\$0
2018	State	CAP	\$0	\$500	\$0
2018	State	OP	\$0	\$665	\$0
2019	State	CAP	\$0	\$500	\$0
2019	State	OP	\$0	\$665	\$0

Federal Total: \$0 **Non-Federal Total:** \$5,693 **Grand Total:** \$5,693



Lawrence-Douglas County MPO

FFY 2017 - 2020 Transportation Improvement Program Projects (Costs in 1,000s)

(Includes the Program of Projects for the Lawrence Transit System)

Project Sponsor: Cottonwood Inc. **Project Name:** Cwood: FTA 5310 Capital Funds

TIP #: 409

KDOT #:

Length (mi): 0.00

Location: Lawrence

Project Type: Transit/Paratransit

Work Type: Capital

Date Added: 8/2017

Last Revised:

Description:

Purchase a Ramp Mini-Van

Comments:

80/20 federal/local split

FFY	Fund Source	Phase	Federal	State	Local
2018	Local	CAP	\$0	\$0	\$8
2018	5310	CAP	\$31	\$0	\$0

Federal Total: \$31 **Non-Federal Total:** \$8 **Grand Total:** \$39

Project Sponsor: Lawrence Transit **Project Name:** Lawrence Multi-Modal Center

TIP #: 410

KDOT #:

Length (mi):

Location:

Project Type: Transit/Paratransit

Work Type:

Date Added: 7/2016

Last Revised:

Description:

Transit Facility

Comments:

FFY	Fund Source	Phase	Federal	State	Local
2017	Local	PE	\$0	\$0	\$1,000
2018	Local	CONST	\$0	\$0	\$1,000
2019	Local	CONST	\$0	\$0	\$2,000

Federal Total: \$0 **Non-Federal Total:** \$4,000 **Grand Total:** \$4,000

Lawrence-Douglas County MPO

FFY 2017 - 2020 Transportation Improvement Program Projects (Costs in 1,000s)

(Includes the Program of Projects for the Lawrence Transit System)

Project Sponsor: Independence Inc. **Project Name:** Indep. Inc: FTA 5310 Capital Funds

TIP #: 411

KDOT #:

Length (mi):

Location:

Project Type: Transit/Paratransit

Work Type: Capital

Date Added: 7/2016

Last Revised:

Description:

Full size van

Comments:

FFY	Fund Source	Phase	Federal	State	Local
2017	Local	CAP	\$0	\$0	\$12
2017	5310	CAP	\$47	\$0	\$0

Federal Total: \$47 **Non-Federal Total:** \$12 **Grand Total:** \$59

Project Sponsor: Lawrence Transit **Project Name:** Operating Funds

TIP #: 412

KDOT #: 5307 FTA

Length (mi):

Location: Lawrence

Project Type: Transit/Paratransit

Work Type: Operating

Date Added: 10/2014

Last Revised: 10/2016

Description:

Operating and Preventative Maintenance activities.

Comments:

Federal Transit 5307 Funds. 2016-2019 amounts based on 2016 levels projected. Linked with project #402.

FFY	Fund Source	Phase	Federal	State	Local
2017	Local	OP	\$0	\$0	\$1,524
2017	5307	OP	\$2,135	\$0	\$0
2018	Local	OP	\$0	\$0	\$1,524
2018	5307	OP	\$2,135	\$0	\$0
2019	Local	OP	\$0	\$0	\$1,524
2019	5307	OP	\$2,135	\$0	\$0

Federal Total: \$6,405 **Non-Federal Total:** \$4,572 **Grand Total:** \$10,977

Lawrence-Douglas County MPO
FFY 2017 - 2020 Transportation Improvement Program Projects (Costs in 1,000s)
 (Includes the Program of Projects for the Lawrence Transit System)

Project Sponsor: Lawrence Presbyterian Manor
TIP #: 413
Length (mi): 0.00
Project Type: Transit/Paratransit
Date Added: 8/2017
Description: Purchase a 14 Passenger Composite Small Transit Bus

Project Name: LPM: FTA 5310 Capital Funds
KDOT #:
Location: Lawrence
Work Type: Capital
Last Revised:
Comments: 80/20 federal/local split

FFY	Fund Source	Phase	Federal	State	Local
2018	Local	CAP	\$0	\$0	\$18
2018	5310	CAP	\$47	\$0	\$0

Federal Total: \$47 **Non-Federal Total:** \$18 **Grand Total:** \$65

Project Sponsor: Senior Resource Center for Douglas County, Inc.
TIP #: 414
Length (mi): 0.00
Project Type: Transit/Paratransit
Date Added: 8/2017
Description: Purchase a Ramp Mini-Van (\$38) and a Full Size Van (\$60)

Project Name: SRC DGCO: FTA 5310 Capital Funds
KDOT #:
Location: Lawrence
Work Type: Capital
Last Revised:
Comments: 80/20 federal/local split

FFY	Fund Source	Phase	Federal	State	Local
2018	Local	CAP	\$0	\$0	\$20
2018	5310	CAP	\$78	\$0	\$0

Federal Total: \$78 **Non-Federal Total:** \$20 **Grand Total:** \$98

Lawrence-Douglas County MPO
FFY 2017 - 2020 Transportation Improvement Program Projects (Costs in 1,000s)
 (Includes the Program of Projects for the Lawrence Transit System)

Project Sponsor: Lawrence **Project Name:** Santa Fe Depot Restoration

TIP #: 500 **KDOT #:** 23TE-0373-01

Length (mi): **Location:** 413 East 7th Street, Lawrence, KS

Project Type: Enhancement **Work Type:** Special Work

Date Added: 10/2014 **Last Revised:** 8/2017

Description:
 Revitalize the Santa Fe Depot site and building

Comments:
 TA funding to pay 80% of eligible costs.

FFY	Fund Source	Phase	Federal	State	Local
2016	Local	PE	\$0	\$0	\$1
2017	TA	CE	\$88	\$0	\$0
2017	Local	CE	\$0	\$0	\$22
2017	TA	CONST	\$1,112	\$0	\$0
2017	Local	CONST	\$0	\$0	\$278
Federal Total:			\$1,200	Non-Federal Total: \$301	Grand Total: \$1,501

Project Sponsor: Eudora **Project Name:** Eudora South Trail Phase 2

TIP #: 503 **KDOT #:** TE-0437-01

Length (mi): 0.66 **Location:** South Eudora from Eudora High School to Eudora Middle School

Project Type: Enhancement **Work Type:** Pedestrian & Bicycle Work

Date Added: 7/2016 **Last Revised:**

Description:
 10' wide shared use path that will have ADA ramps and create a safe access for residents of all ages.

Comments:

FFY	Fund Source	Phase	Federal	State	Local
2016	Local	PE	\$0	\$0	\$26
2017	TA	CE	\$44	\$0	\$0
2017	Local	CE	\$0	\$0	\$11
2017	TA	CONST	\$218	\$0	\$0
2017	Local	CONST	\$0	\$0	\$55
Federal Total:			\$262	Non-Federal Total: \$92	Grand Total: \$354

Lawrence-Douglas County MPO
FFY 2017 - 2020 Transportation Improvement Program Projects (Costs in 1,000s)
 (Includes the Program of Projects for the Lawrence Transit System)

Project Sponsor: Lawrence

Project Name: Lawrence Safe Routes to School TA

TIP #: 504

KDOT #: U-2305-01

Length (mi): 0.43

Location: Various sidewalk in 3 locations, RRFB at approx. 10 locations

Project Type: Enhancement

Work Type: Pedestrian & Bicycle Work

Date Added: 7/2016

Last Revised: 2/2017

Description:

The project will add sidewalks along designated safe routes for 2 schools (LMCMS/WES) on arterial roadways w/sidewalk on 1 side & residential roadways w/no sidewalk on either side. It will also add RRFBs at existing school crossings w/o a crossing guard

Comments:

The SRTS funding is an 80/20 (KDOT/City) cost share with KDOT contributing a max of \$189,156. Shift CONST from 2017 to 2018.

FFY	Fund Source	Phase	Federal	State	Local
2017	Local	CE	\$0	\$0	\$24
2018	Local	CONST	\$0	\$0	\$68
2018	TA	CONST	\$186	\$0	\$0
Federal Total:			\$186	Non-Federal Total: \$92	Grand Total: \$278

Project Sponsor: KDOT

Project Name: Various Railroad Safety Projects in the Region

TIP #: 600

KDOT #:

Length (mi):

Location:

Project Type: Safety

Work Type:

Date Added: 10/2014

Last Revised: 10/2016

Description:

Safety improvements along railroads in region as identified by KDOT. These funds may be used to benefit the region by working to correct or improve identified safety hazards at public railway-highway crossing in a proactive manner.

Comments:

This is a master project that would include any safety projects selected in region. State funds (SF) Conversions: 2016 SF to 2017 HSIP, 2017 SF to 2018 HSIP, 2018 SF to 2019 HSIP, 2019 SF to 2020 HSIP.

FFY	Fund Source	Phase	Federal	State	Local
2017	State-AC	CONST	\$0	\$500	\$0
2017	HSIP	CONVERSION	\$500	\$0	\$0
2017	Credit	OTHER	\$0	(\$500)	\$0
2018	State-AC	CONST	\$0	\$500	\$0
2018	HSIP	CONVERSION	\$500	\$0	\$0
2018	Credit	OTHER	\$0	(\$500)	\$0
2019	State-AC	CONST	\$0	\$500	\$0
2019	HSIP	CONVERSION	\$500	\$0	\$0
2019	Credit	OTHER	\$0	(\$500)	\$0
2020	State-AC	CONST	\$0	\$500	\$0
2020	HSIP	CONVERSION	\$500	\$0	\$0
2020	Credit	OTHER	\$0	(\$500)	\$0
Federal Total:			\$2,000	Non-Federal Total: \$0	Grand Total: \$2,000

Lawrence-Douglas County MPO
FFY 2017 - 2020 Transportation Improvement Program Projects (Costs in 1,000s)
 (Includes the Program of Projects for the Lawrence Transit System)

Project Sponsor: Douglas County **Project Name:** Rte 458 HRRR

TIP #: 601 **KDOT #:** C-4857-01

Length (mi): 2.00 **Location:** Rte 458 E 1800 Rd. to E 2000 Rd.

Project Type: Safety **Work Type:** Grading

Date Added: 1/2016 **Last Revised:** 2/2017

Description:
 Replace nine narrow culverts and remove roadside trees to improve roadside safety.

Comments:
 Non-participating pavement rehab and entrance reconstruction not included in listed costs.

FFY	Fund Source	Phase	Federal	State	Local
2016	Local	PE	\$0	\$0	\$48
2017	Local	ROW	\$0	\$0	\$75
2017	Local	UTIL	\$0	\$0	\$75
2018	Local	CE	\$0	\$0	\$45
2018	Local	CONST	\$0	\$0	\$83
2018	HSIP	CONST	\$745	\$0	\$0

Federal Total: \$745 **Non-Federal Total:** \$326 **Grand Total:** \$1,071

Project Sponsor: Douglas County **Project Name:** Local Road Safety Plan

TIP #: 602 **KDOT #:**

Length (mi): **Location:** County road network

Project Type: Safety **Work Type:** Safety

Date Added: 1/2016 **Last Revised:** 10/2016

Description:
 Safety study of county road network (major collectors) to identify needed safety improvements.

Comments:

FFY	Fund Source	Phase	Federal	State	Local
2017	Local		\$0	\$0	\$4
2017	HRRR		\$36	\$0	\$0

Federal Total: \$36 **Non-Federal Total:** \$4 **Grand Total:** \$40

Lawrence-Douglas County MPO

FFY 2017 - 2020 Transportation Improvement Program Projects (Costs in 1,000s)

(Includes the Program of Projects for the Lawrence Transit System)

Project Sponsor: Lawrence

Project Name: 23rd St Access Management -
2246 Ohio St Driveway

TIP #: 603

KDOT #: K-9667-11

Length (mi): 0.03

Location: 23rd Street & Ohio Street

Project Type: Safety

Work Type: Access Management

Date Added: 10/2016

Last Revised:

Description:

Removal of driveway access to
23rd Street east of Ohio Street.

Comments:

FFY	Fund Source	Phase	Federal	State	Local
2017	Local	CE	\$0	\$0	\$1
2017	State	CONST	\$0	\$6	\$0
2017	Local	CONST	\$0	\$0	\$2

Federal Total:	\$0	Non-Federal Total:	\$9	Grand Total:	\$9
-----------------------	-----	---------------------------	-----	---------------------	-----

Project Sponsor: Lawrence

Project Name: Massachusetts St, 11th to
14th St Reconfigure Lanes

TIP #: 604

KDOT #: U-0225-01

Length (mi): 0.50

Location: Massachusetts 11th Street to
14th Street

Project Type: Safety

Work Type: Mill/Overlay

Date Added: 8/2017

Last Revised:

Description:

Reconfigure lanes for center turn
lane and bike amenities

Comments:

FFY	Fund Source	Phase	Federal	State	Local
2018	Local	CONST	\$0	\$0	\$30
2018	Local	PE	\$0	\$0	\$20
2019	HSIP	CONST	\$100	\$0	\$0

Federal Total:	\$100	Non-Federal Total:	\$50	Grand Total:	\$150
-----------------------	-------	---------------------------	------	---------------------	-------

Lawrence-Douglas County MPO

FFY 2017 - 2020 Transportation Improvement Program Projects (Costs in 1,000s)

(Includes the Program of Projects for the Lawrence Transit System)

Project Sponsor: KDOT

TIP #: 703

Length (mi): 38.00

Project Type: Other

Date Added: 1/2016

Description:

Study for the feasibility of tolling in the SLT & K-10 Corridors in Douglas and Johnson County. This study will include a determination of which tolling scenarios are most feasible at a sketch planning level for implementing corridor improvements.

Project Name: Toll Feasibility Study for the SLT & K-10 Corridors

KDOT #: KA-2362-02

Location: I-10(KTA)/K-10 Junction to I-435/K-10 Junction

Work Type: Special Work

Last Revised: 10/2016

Comments:

Study is currently on hold pending future direction from KDOT leadership. Project also included in MARC TIP.

FFY	Fund Source	Phase	Federal	State	Local
2016	State	PE	\$0	\$94	\$0
2016	KTA	PE	\$0	\$0	\$94

Federal Total:	\$0	Non-Federal Total:	\$188	Grand Total:	\$188
-----------------------	-----	---------------------------	-------	---------------------	-------