

Tuesday, January 2, 2018 at 1:30 PM
Planning Conference Room
City Hall, 6 East 6th Street
Lawrence, Kansas 66044

TECHNICAL ADVISORY COMMITTEE - AGENDA

1. Call Meeting to Order, Welcome and Introductions
2. Action Item: Approval of minutes from the December 5, 2017 meeting (attached)
3. Action Item: Election of TAC Officers for 2018
The MPO staff will ask the TAC members to elect a Chairperson and a Vice Chairperson to serve during calendar year 2018.
4. Action Item: Recommend Approval of the Lawrence Loop Alignment Study (<https://assets.lawrenceks.org/assets/mpo/pedbike/Lawrence-Loop-Study-DRAFT.pdf>)
5. Discussion Item: Safety Target Setting (attached)
6. Quick Updates
 - a. T2040 Update – www.lawrenceks.org/mpo/t2040-update
 - b. Bus Transfer Location Analysis – www.lawrencetransit.org/bus-transfer-location-analysis
 - c. Safety Analysis
 - d. TIP Amendment – projects due January 5
7. Other Business
8. Next Meeting: February 6, 2018 or another date set by the TAC

Special Accommodations: Please notify the Lawrence-Douglas County Metropolitan Planning Organization (L-DC MPO) at (785) 832-3150 at least 72 hours in advance if you require special accommodations to attend this meeting (i.e., qualified interpreter, large print, reader, hearing assistance). We will make every effort to meet reasonable requests.

The L-DC MPO programs do not discriminate against anyone on the basis of race, color, national origin, sex, age, or handicap/disability, according to Title VI of the Civil Rights Act of 1964. For more information or to obtain a Title VI Complaint Form, see www.lawrenceks.org/mpo/title6 or call (785) 832-3150.

TECHNICAL ADVISORY COMMITTEE (TAC)
Minutes for Tuesday, December 5th, 2017 Meeting

Voting Members

Keith Browning (Douglas County Public Works Director)
Charles Soules (City of Lawrence Public Works Director)
Leslie Herring (City of Eudora)
Ed Courton (City of Baldwin City)
Scott McCullough (Lawrence-Douglas County Planning & Development)
Allison Smith (KDOT)
Bob Nugent (Lawrence Transit)
Danny Kaiser (KU on Wheels)

Non-Voting Members

Daniel Nguyen (Federal Transit Administration)
Charlie Bryan (Lawrence-Douglas County Health Department)

Staff

Jessica Mortinger (Lawrence- Douglas County MPO)
Ashley Myers (Lawrence- Douglas County MPO)
Ryan Pearson (L-DC MPO Intern)

Others

Michael Almon (Sustainability Action Network)

1. Call Meeting to Order, Welcome and Introductions

Danny Kaiser called the meeting to order at 1:32 PM. A quorum was present.

2. Action Item: Approval of minutes from the November 7, 2017 meeting

Danny Kaiser asked if anyone had any changes to make to the minutes from the November 7th meeting. There were no changes. Keith Browning moved to approve the minutes and the motion was seconded by Allison Smith and passed unanimously, 8-0.

3. Action Item: Recommend approval of the FFY201-2020 Transportation Improvement Program (TIP) Amendment 3

Ashley Myers introduced the proposed amendments to the Transportation Improvement Program. The document was posted for public comment from November 9th thru 24th and no public comments were received. Ms. Myers asked if there were any questions about the proposed special amendment requested by KDOT. There were none. Chuck Soules moved to approve the TIP amendment and the motion was seconded by Ed Courton and passed unanimously, 8-0.

4. Discussion Item: Recommend writing a letter of support for Topeka Transit

Jessica Mortinger described that Topeka Metro Transit is considering to apply to KDOT for competitive Commuter Discretionary Program funding to operate commuter bus service along I-70. KDOT's grant program covers capital acquisition and 1 year of operation and requires a 20% local match. Topeka Metro Transit has met with Lawrence Transit and discussed opportunities to coordinate, connect proposed routes and bus stop amenities. Topeka Metro Transit has not yet made a final decision on whether to apply or not, there have been concerns from the Topeka MPO and others of the ability to fund a service past the 1 year of operating

that the grant covers. The plan for commuter service on I-70 are supported by the KDOT I-70 Corridor Transit Feasibility Study and Transportation 2040. At this time, there aren't any local Douglas County funds available for service operations, however Topeka metro has asked for a letter of support from the MPO Policy Board. Chuck Soules asked about the level of support that the MPO would be providing and whether or not this would be financial. Ms. Mortinger clarified that it would communicate that their plan was consistent with existing MPO plans but that there is no known local funding available. TAC members discussed commuter service and agreed that the letter should recognize that the proposal is consistent with existing plans, however there are concerns about funding and no local funding the Douglas County is available.

5. Quick Updates

a. T2040 Update

Ashley Myers outlined the most recent process for the second round of public engagement for the T2040 update, noting that there a total of 88 survey responses between the online survey and public engagement events. Ms. Myers mentioned that the MPO is in the process of reviewing the comments and developing the T2040 plan.

b. Lawrence Loop Alignment Study

Jessica Mortinger indicated that study is being finalized and a final draft will be available for consideration by TAC/MPO in January.

c. Bus Transfer Location Analysis

Bob Nugent noted that the final survey is online and currently collecting feedback on the proposed locations. Jessica Mortinger said a final report is being prepared to document the planning process and will be available in 2018. As we continue the process we will generate a report by the end of the year, which will propose two candidate locations for consideration.

d. Safety Analysis

Jessica Mortinger indicated that study is being finalized and a final draft will be available for consideration by TAC/MPO in February.

e. Ozone Designation Update

Provided in agenda packet

6. Other Business

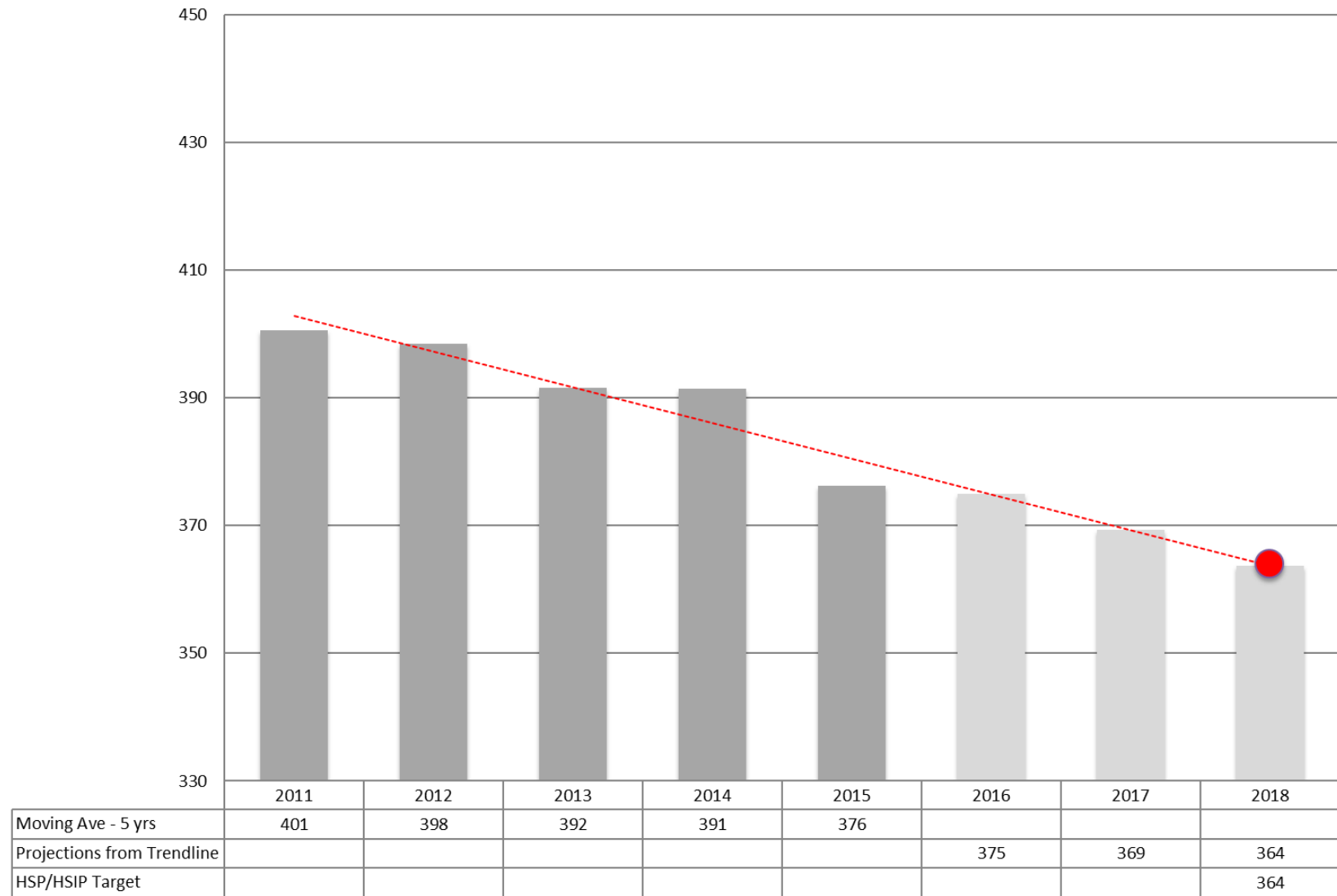
Michael Almon, asked staff to clarify the process for the T2040 update approvals, asking whether the update will be go to TAC or the steering committee first. Jessica Mortinger indicated it will be sent to the steering committee first.

7. Next Meeting: January 2, 2018 or another date set by the TAC

KDOT State Safety Targets

(Set August 31, 2017)

Fatalities



■ Moving Ave - 5 yrs

■ Projections from Trendline

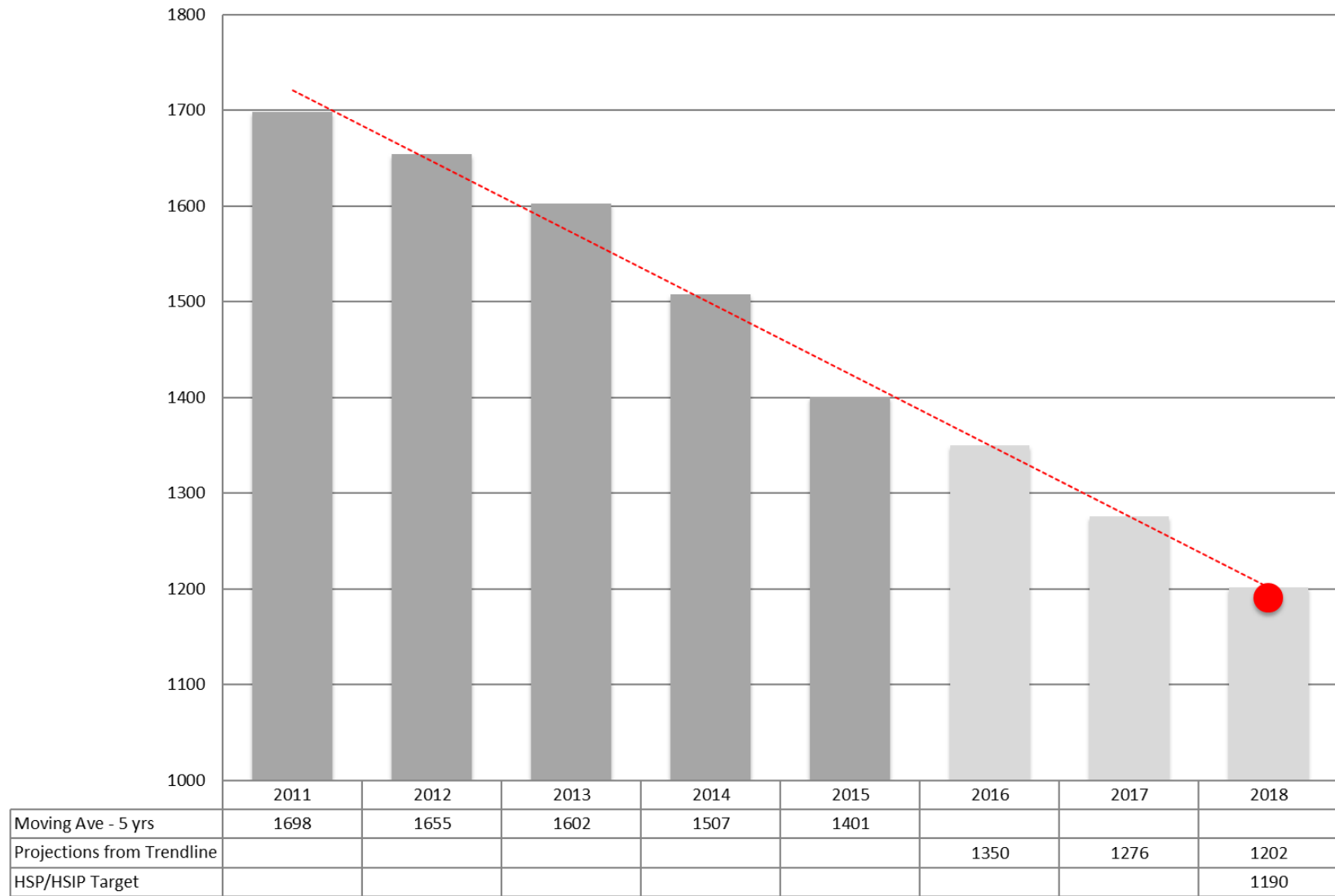
● HSP/HSIP Target

--- Linear (Moving Ave - 5 yrs)

KDOT State Safety Targets

(Set August 31, 2017)

Serious Injuries



■ Moving Ave - 5 yrs

■ Projections from Trendline

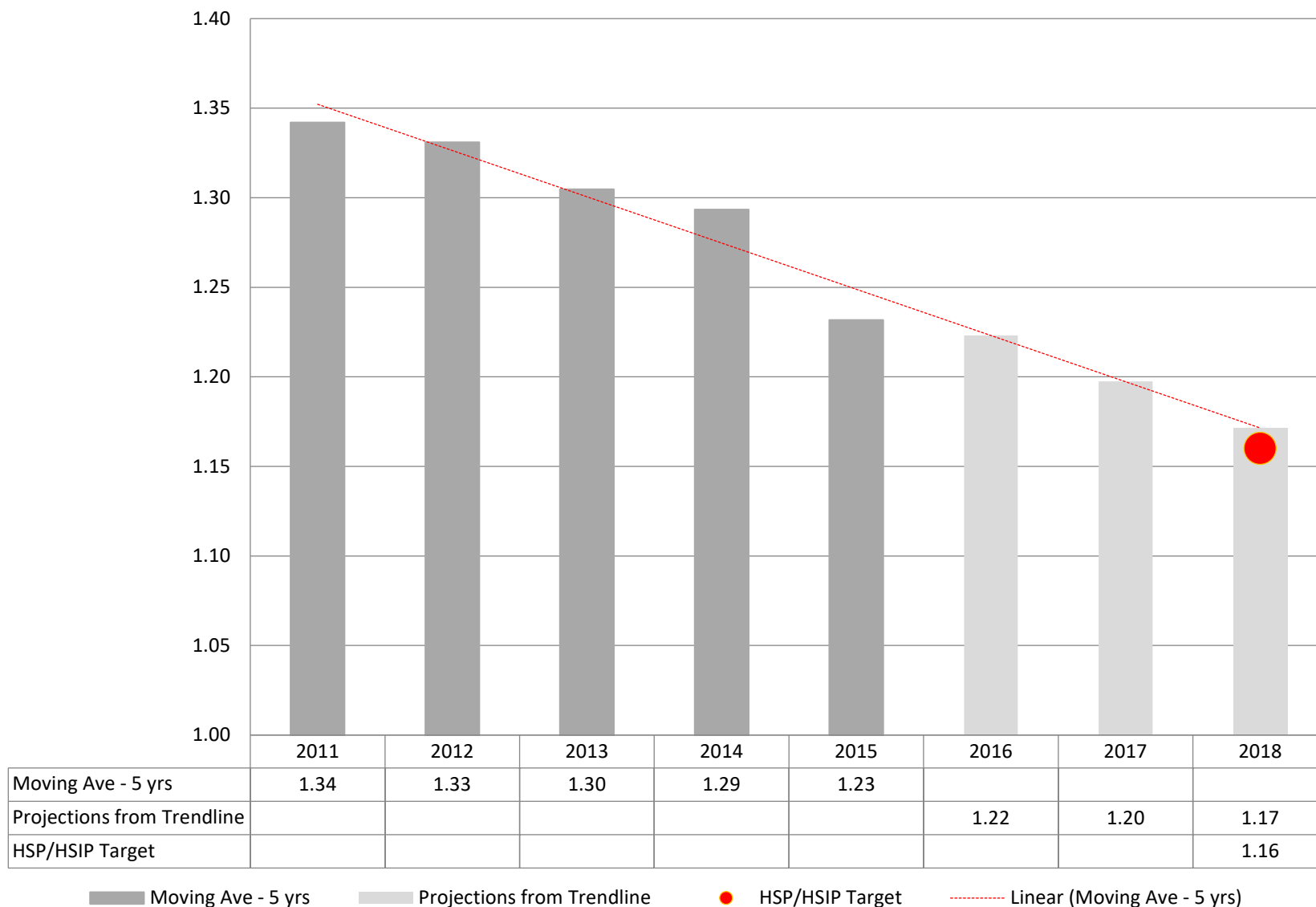
● HSP/HSIP Target

- - - Linear (Moving Ave - 5 yrs)

KDOT State Safety Targets

(Set August 31, 2017)

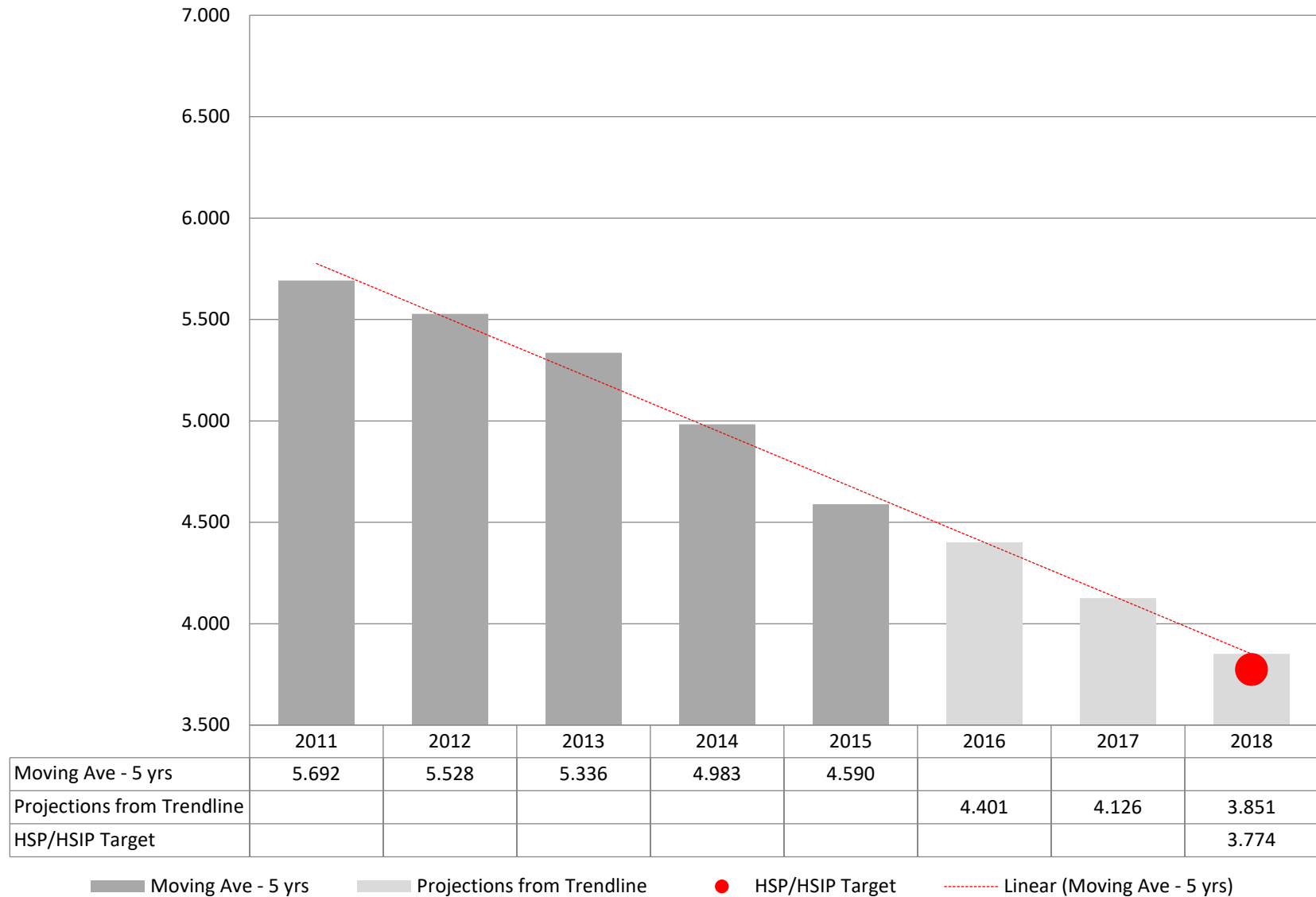
Fatalities per 100 Million VMT



KDOT State Safety Targets

(Set August 31, 2017)

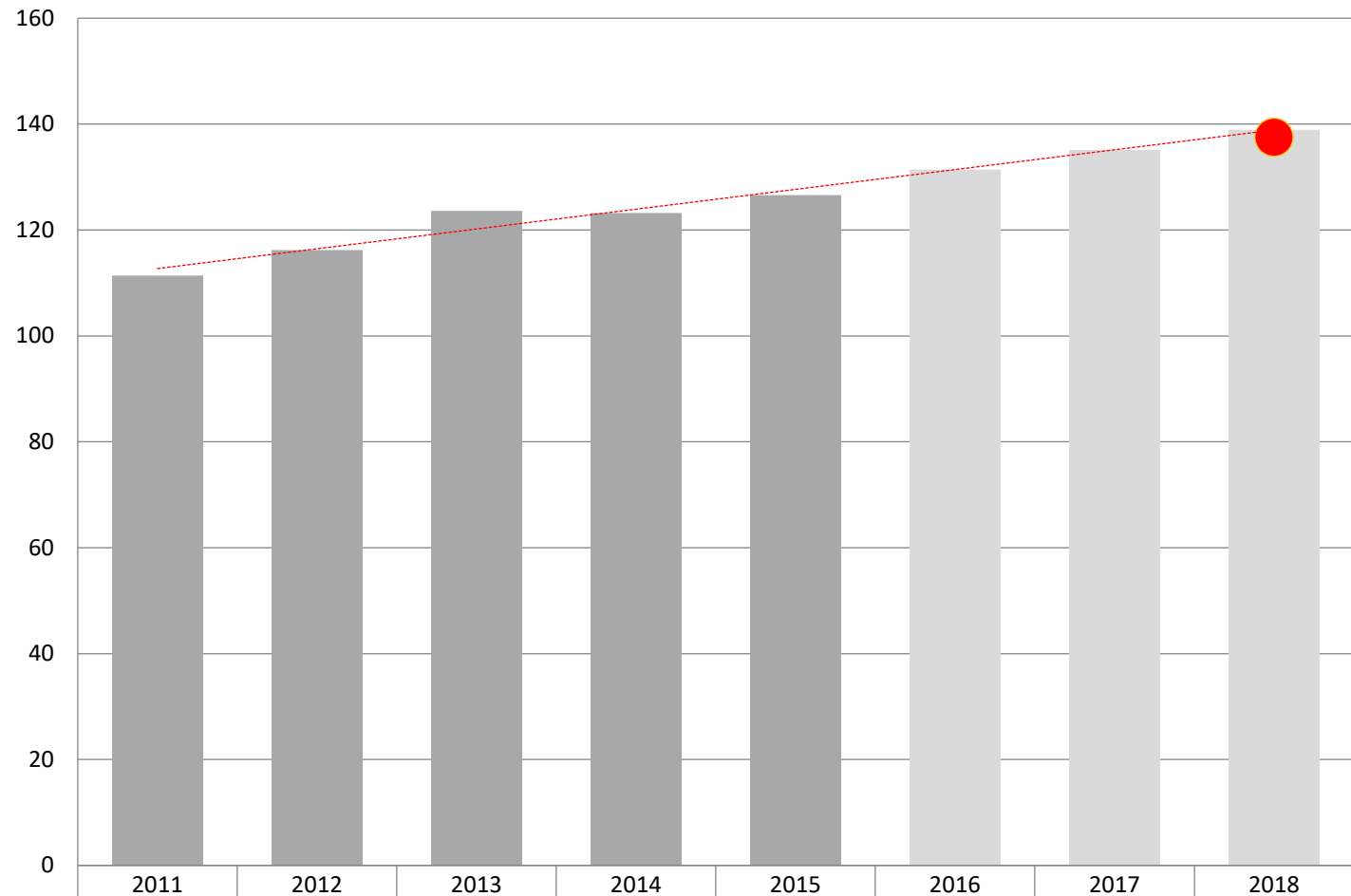
Serious Injuries per 100 Million VMT



KDOT State Safety Targets

(Set August 31, 2017)

Non-Motorized Serious Injuries and Fatalities

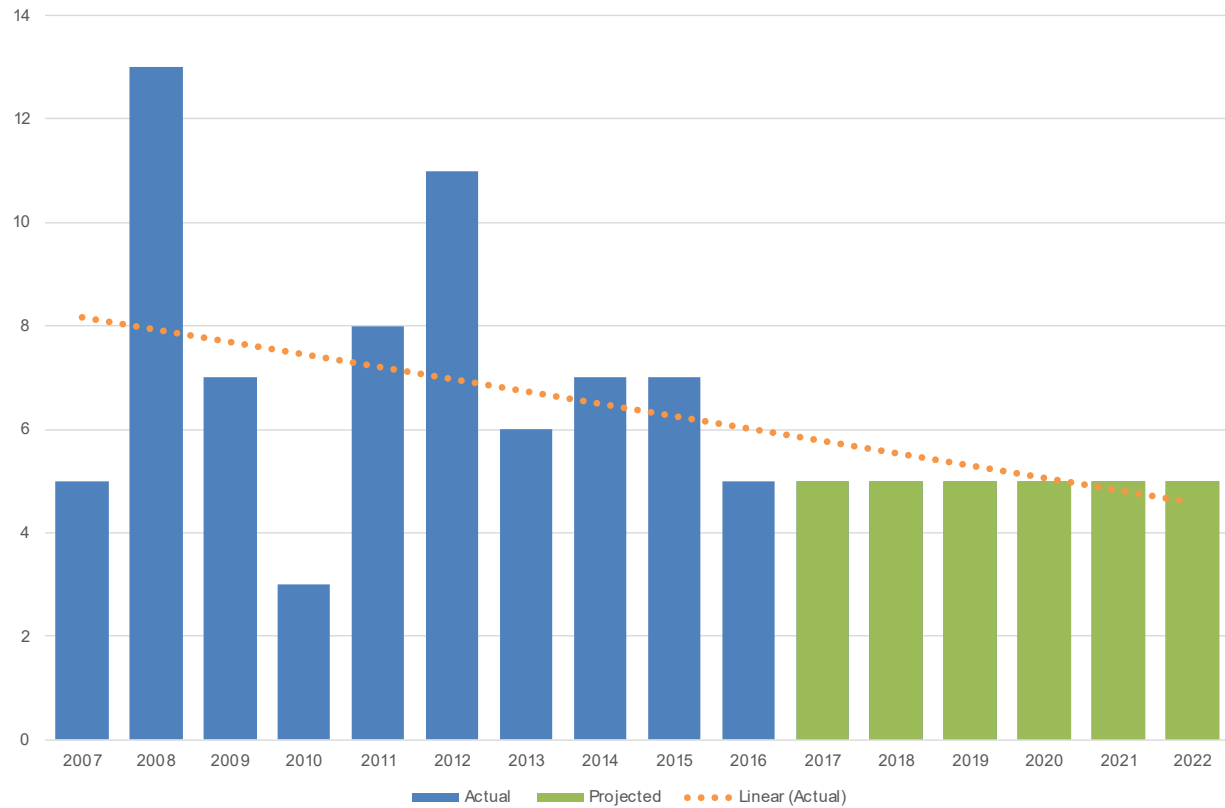


	2011	2012	2013	2014	2015	2016	2017	2018
Moving Ave - 5 yrs	111	116	124	123	127			
Projections from Trendline						131	135	139
HSIP Target								138

Moving Ave - 5 yrs
 Projections from Trendline
 HSIP Target
 Linear (Moving Ave - 5 yrs)

Safety Data

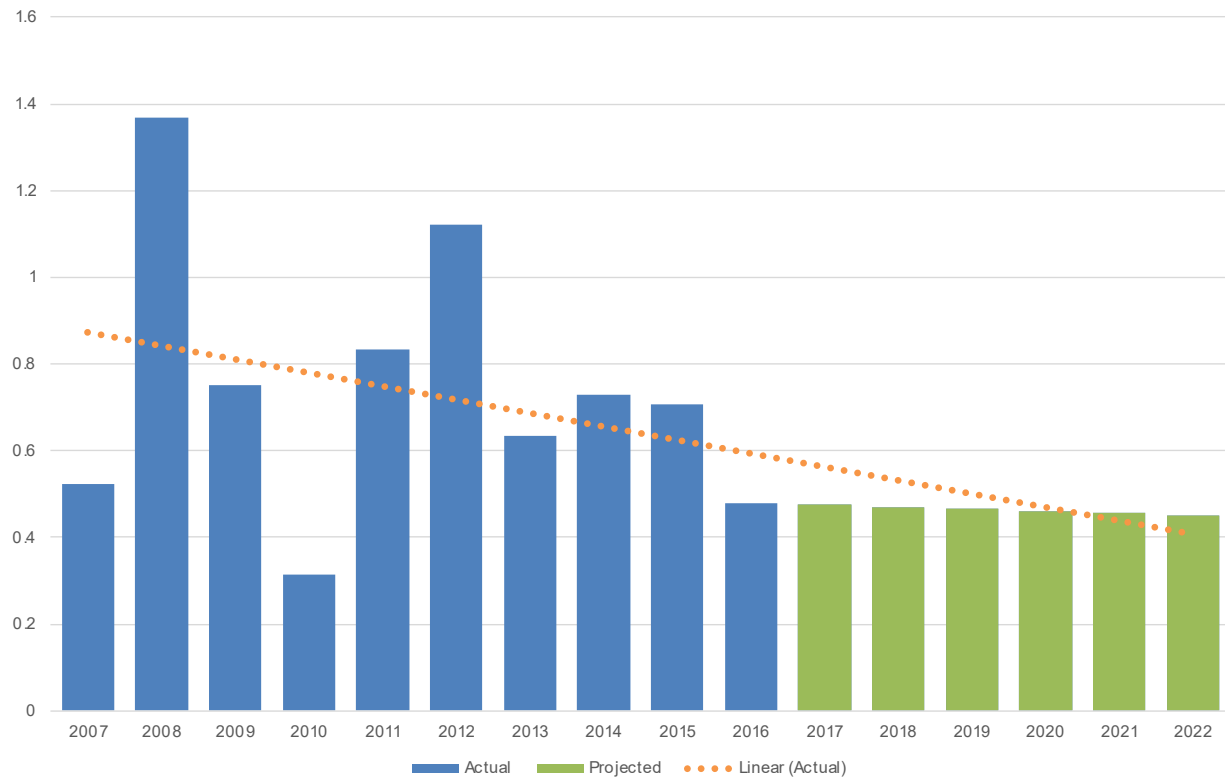
**All Fatalities Crashes (Includes Vehicles, Bicyclists, and Pedestrians)
PM 9**



Fatalities - All Crashes (Includes Vehicles, Bicyclists, and Pedestrians Crashes)												
	2007-2011	2008-2012	2009-2013	2010-2014	2011-2015	2012-2016	2017	2018	2019	2020	2021	2022
5-Yr Rolling Averages	7.2	8.4	7.0	7.0	7.8	7.2						
Projected Trend							5.0	5.0	5.0	5.0	5.0	5.0
Proposed Target							5.0	5.0	5.0	5.0	5.0	5.0

Safety Data

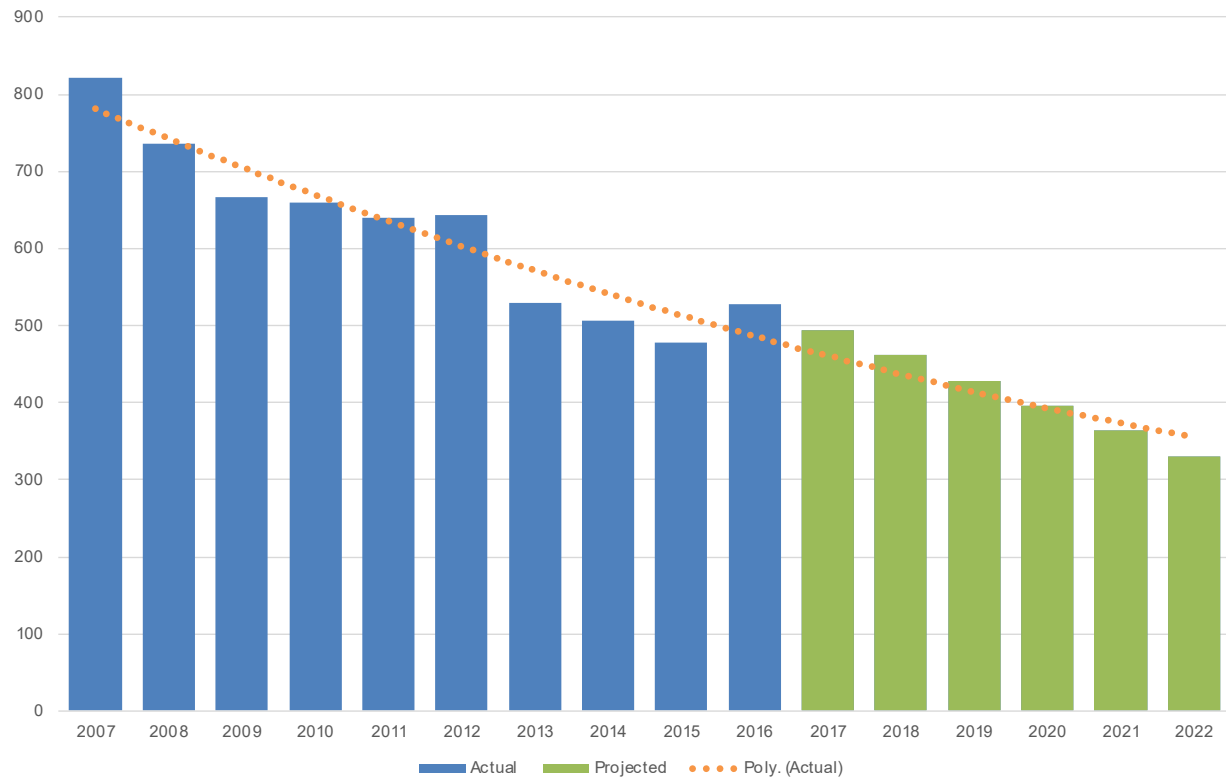
**Rate of Fatalities per 100 Million VMT
(Includes Vehicles, Bicyclists, and Pedestrians Crashes)
PM 10**



Rate of Fatalities per 100 Million VMT (Includes Vehicles, Bicyclists, and Pedestrians Crashes)												
	2007-2011	2008-2012	2009-2013	2010-2014	2011-2015	2012-2016	2017	2018	2019	2020	2021	2022
5-Yr Rolling Averages	0.76	0.88	0.73	0.73	0.81	0.73						
Projected Trend							0.48	0.47	0.47	0.46	0.46	0.45
Proposed Target							0.48	0.47	0.47	0.46	0.46	0.45

Safety Data

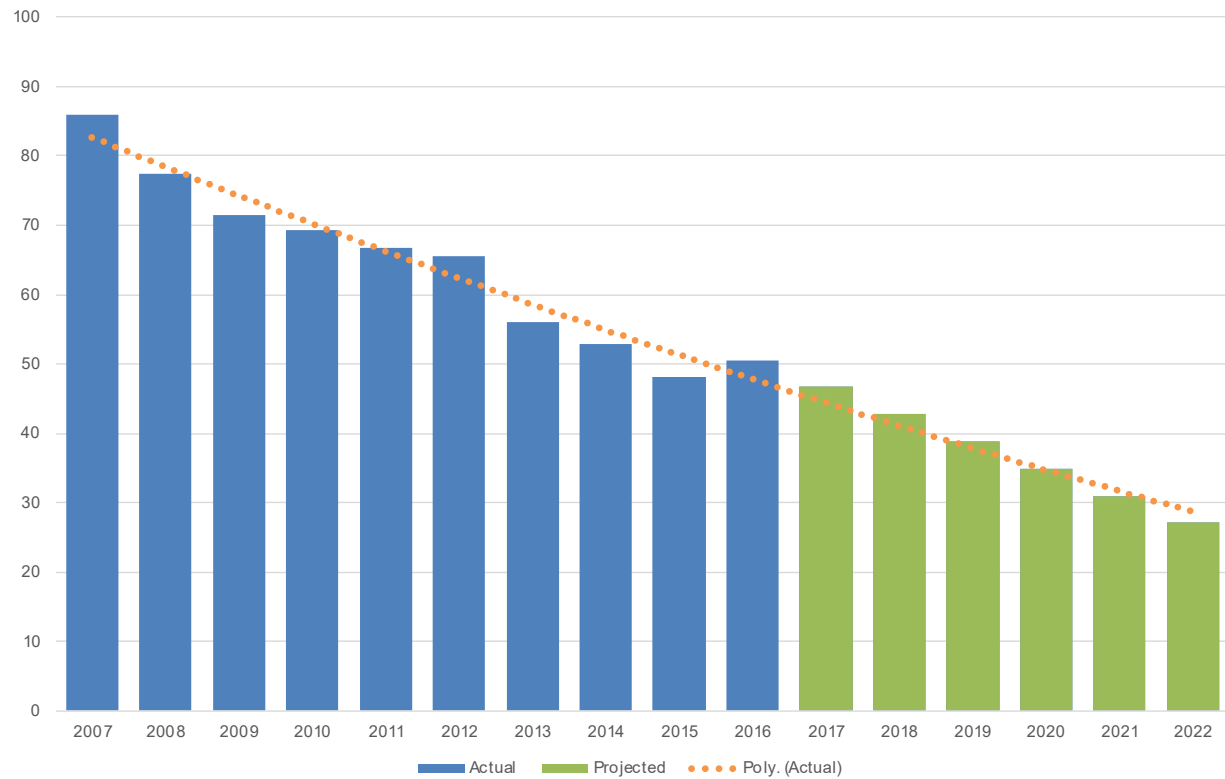
Serious Injuries - All Crashes
(Includes Vehicles, Bicyclists, and Pedestrians Crashes)
PM 11



Serious Injuries - All Crashes (Includes Vehicles, Bicyclists, and Pedestrians Crashes)												
	2007-2011	2008-2012	2009-2013	2010-2014	2011-2015	2012-2016	2017	2018	2019	2020	2021	2022
5-Yr Rolling Averages	705	669	628	596	559	537						
Projected Trend							494	461	429	396	363	330
Proposed Target							494	461	429	396	363	330

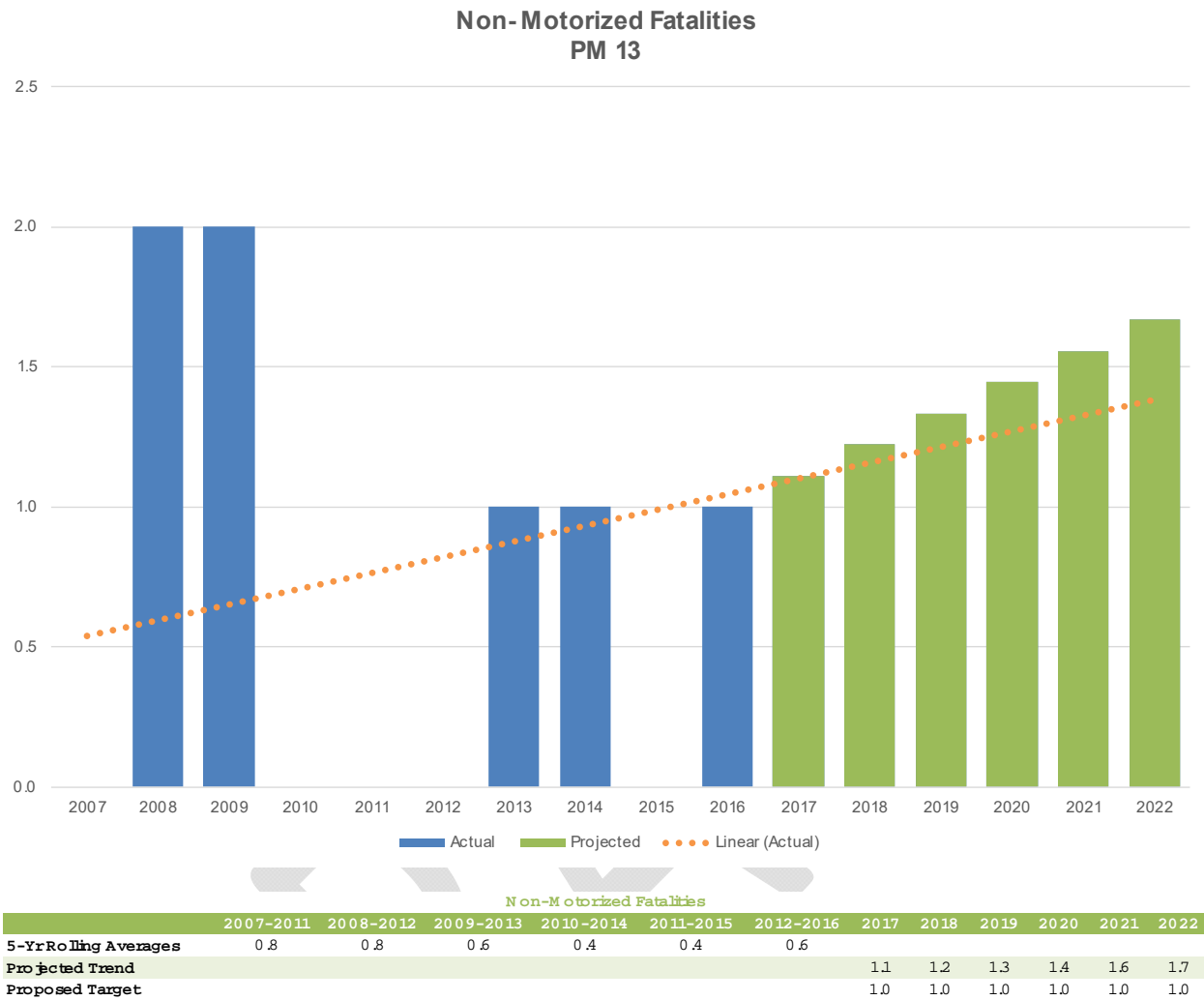
Safety Data

**Rate of Serious Injuries per 100 Million VMT
(Includes Vehicles, Bicyclists, and Pedestrians Crashes)
PM 12**



Rate of Serious Injuries per 100 Million VMT (Includes Vehicles, Bicyclists, and Pedestrians Crashes)												
	2007-2011	2008-2012	2009-2013	2010-2014	2011-2015	2012-2016	2017	2018	2019	2020	2021	2022
5-Yr Rolling Averages	74.18	70.04	65.81	62.13	57.85	54.57						
Projected Trend							46.69	42.77	38.85	34.93	31.01	27.09
Proposed Target							46.69	42.77	38.85	34.93	31.01	27.09

Safety Data



Safety Data

