

# Multimodal Planning Studies

## Bicycle Plan

Steering Committee Meeting #4

September 18, 2013



# Agenda



1. Project Schedule
2. Rural Recommendations
3. Urban Area Recommendations
4. Upcoming Tasks

# Project Schedule



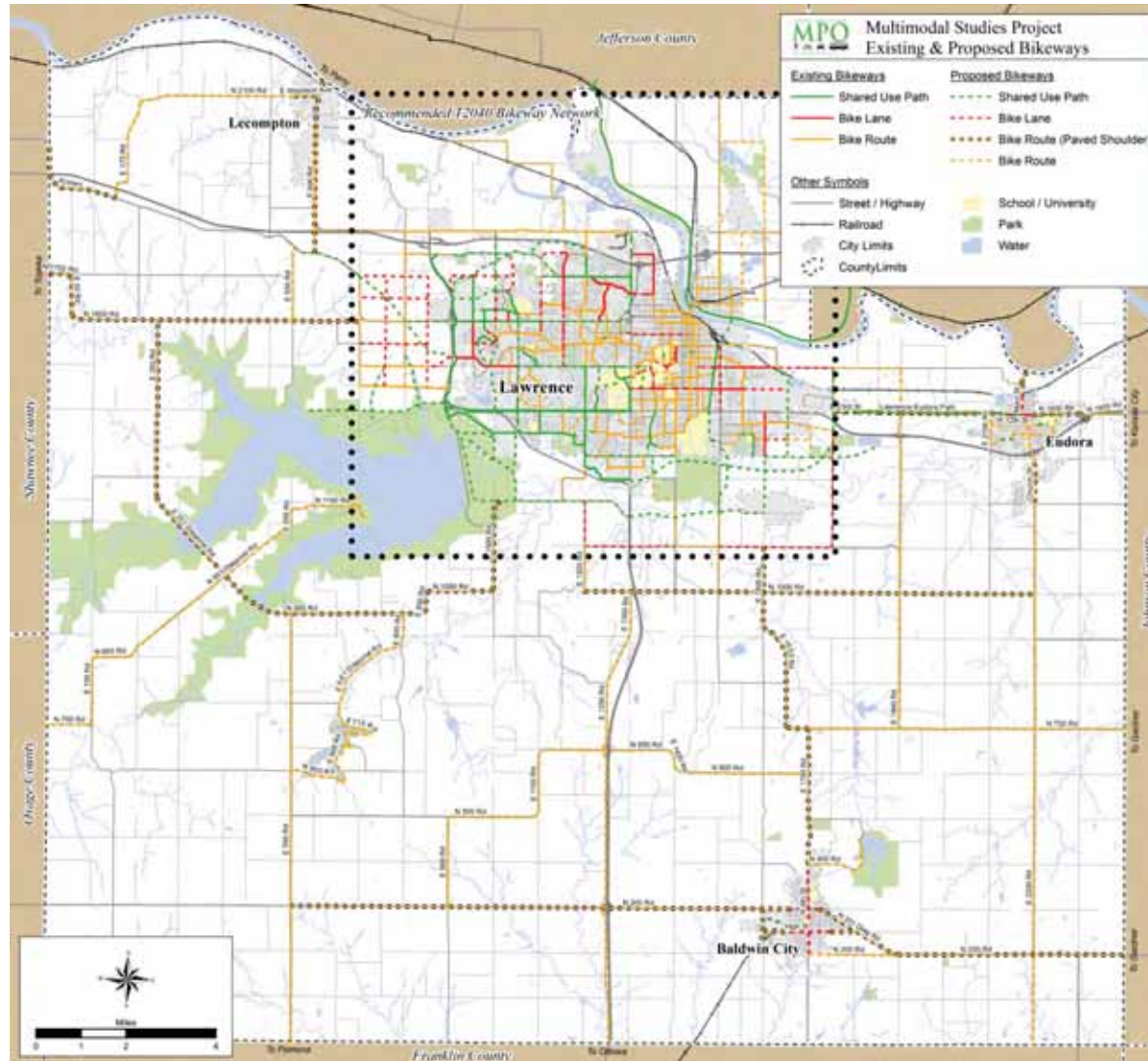
- Online Survey (September through Mid-October)
- Open House; Steering Committee Meeting (October 9, 2013)
- Draft Report (November)

# Rural Recommendations

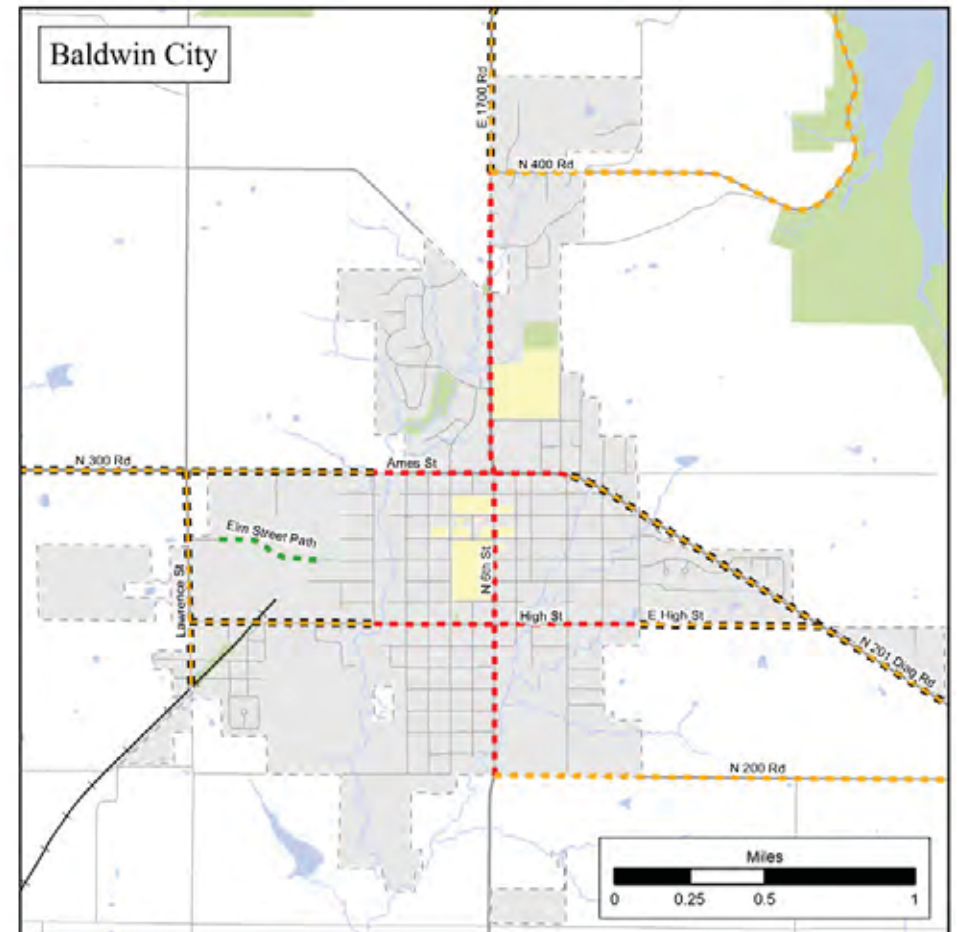
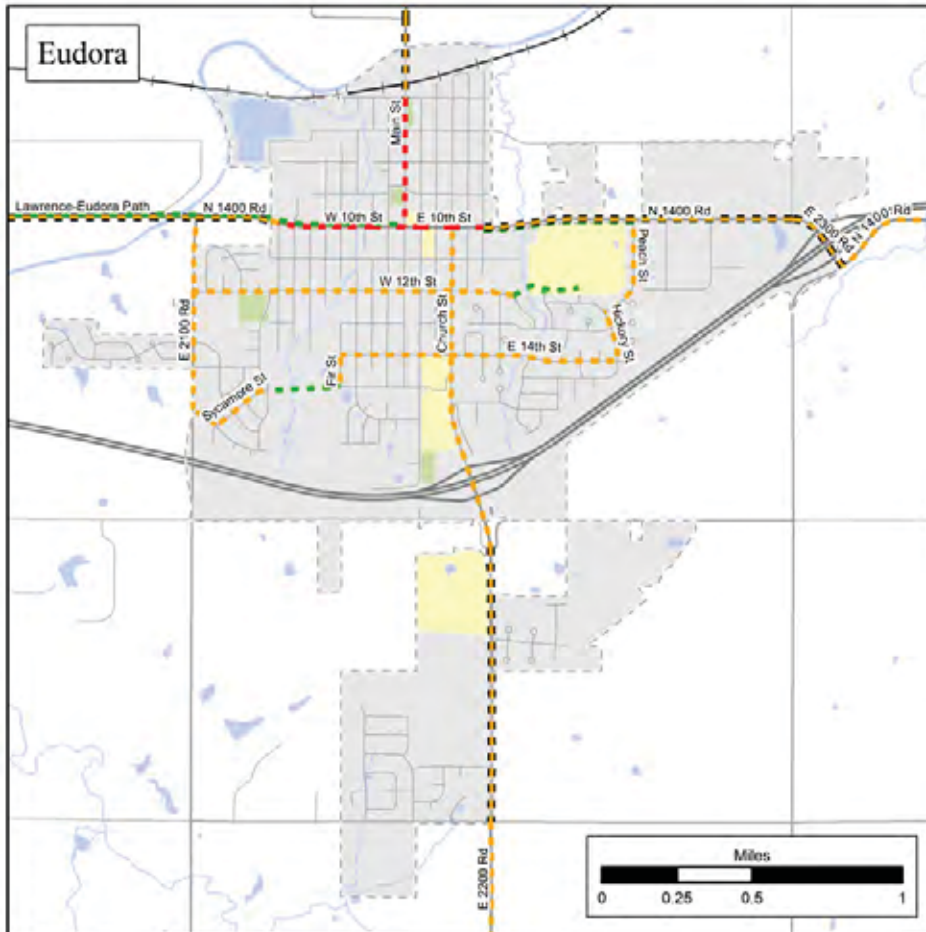
## Bikeway Network Throughout the County

- Connections to communities
  - Eudora, Baldwin City, & Lecompton
- Connections to recreation areas
  - Clinton Lake, Douglas Lake
- Connections to surrounding areas
  - Topeka, Kansas City, others

# Countywide Recommendations



# Eudora & Baldwin City





# Rural Recommendations

## Discussion

- What are we missing?
  - Rural connections
  - Eudora
  - Baldwin City
  - Lecompton
  - Connections to surrounding areas

# Urban Area Recommendations

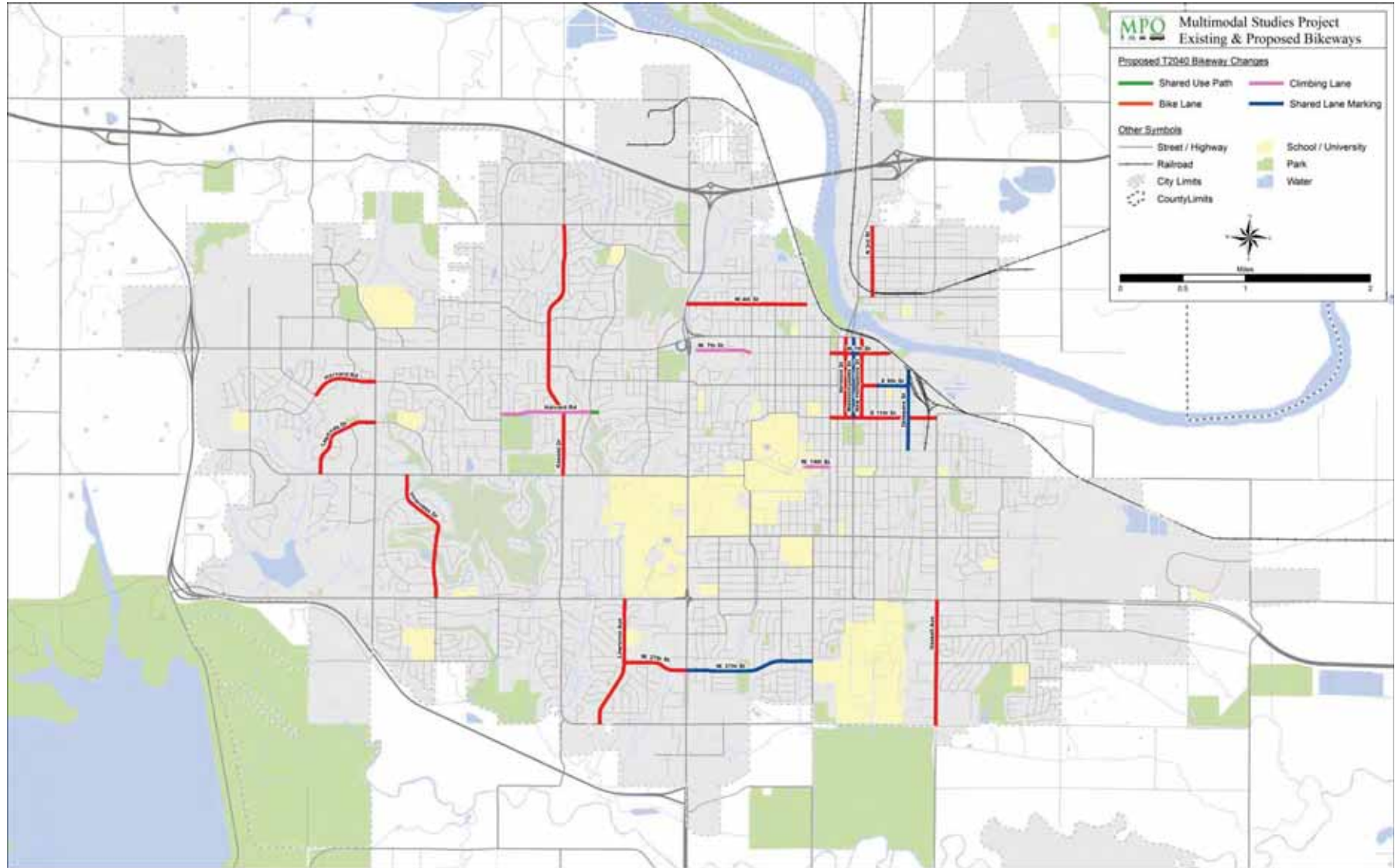


## Build on T2040 Plan

- Focused on changes to T2040 recommendations
  - Provide bike lanes where feasible
- Final recommendations may include additional bikeways
  - Bike lanes on some streets where sidepaths exist
  - Key connections missing from T2040 plan



# Urban Area Recommendations



Data provided by the Lawrence - Douglas County MPO and the U.S. Census Bureau. This map is provided "as is" for informational purposes and no guarantee is made as to the accuracy of the map or data. Plot date 09/11/2015.

# Urban Area Recommendations

## Discussion

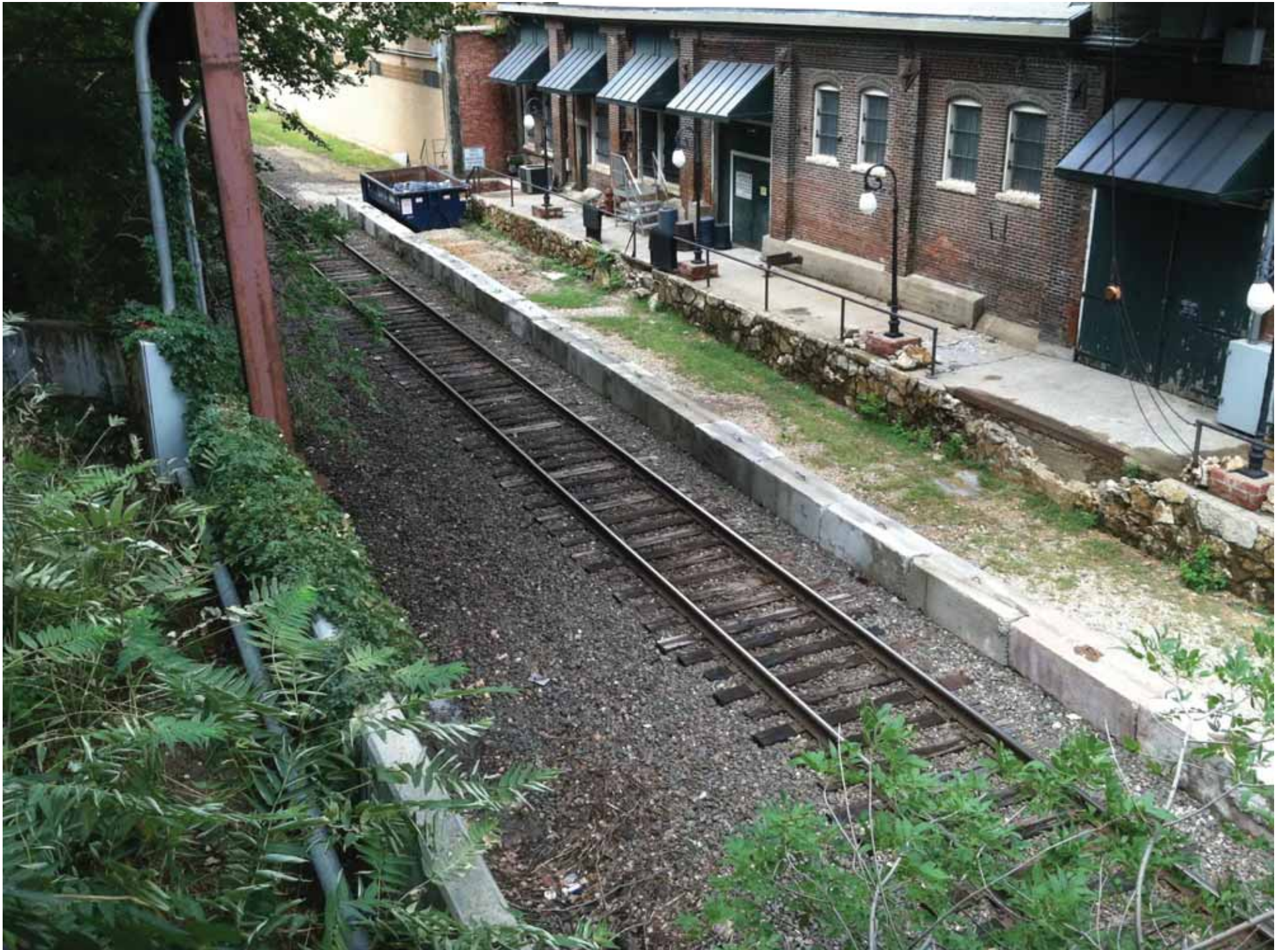
- What are we missing?
  - Other changes
  - New connections?

# Upcoming Tasks



- Final recommendations for rural area bikeway network plan
- Final recommendations for urban area bikeway network plan
- Online Survey
  - August – September
- Draft Recommendations for Open House
  - Today – input from steering committee
  - October – open house
- On-Going Steering Committee Input and Feedback















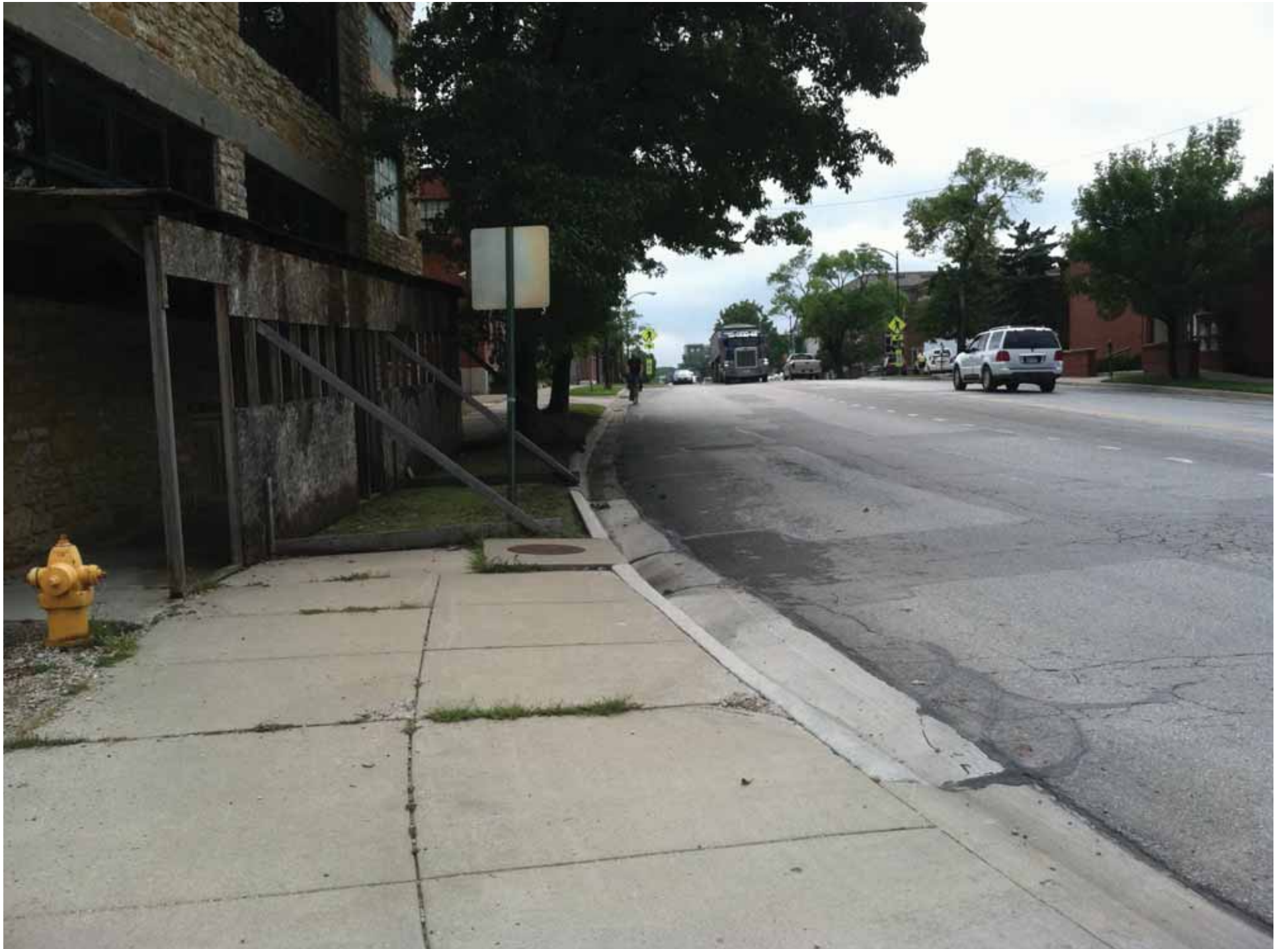


































➔ **PARK** | **OUT** ➔













