



Gaps in the Network

- No sidewalks
- Missing, or poor quality, sidewalk segments
- Obstacles along the sidewalk



Naismith Drive in Lawrence



Sidewalk Maintenance Issues

- Overgrown vegetation
- Snow / Ice
- Sweeping



Mississippi Street in Lawrence



6th Street in Lawrence



Mississippi Street in Lawrence

Transit and Pedestrian Accessibility



Transit Stops

- ADA accessible
- Shelters, signs only
- Concrete pads, grass or dirt
- Connectivity



6th and Michigan in Lawrence



20th and Haskell in Lawrence



6th Street in Lawrence



Intersection Crossings

- Signalized Intersections
- Push Button Locations
- Non-Signalized Crossings



11th and Burroughs Creek Trail



19th and Burroughs Creek Trail

Transit and Pedestrian Accessibility

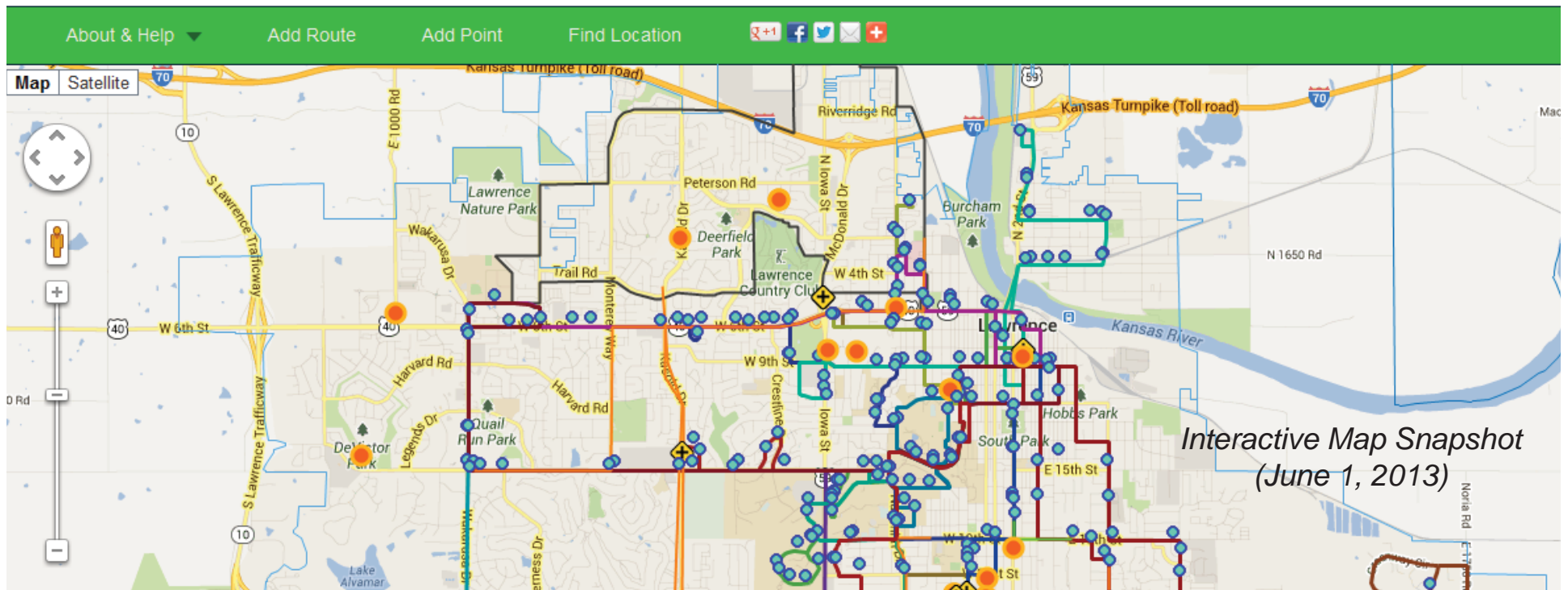


Interactive Maps

- Comment on problem areas, difficult intersections and your route you use to access transit
- Access the transit map directly at: tinyurl.com/TransitPedAccess

Lawrence & Douglas County Multimodal Study: **Transit Access**

Switch Maps: **Bicycling** or **Park & Ride**





An Online Comment...

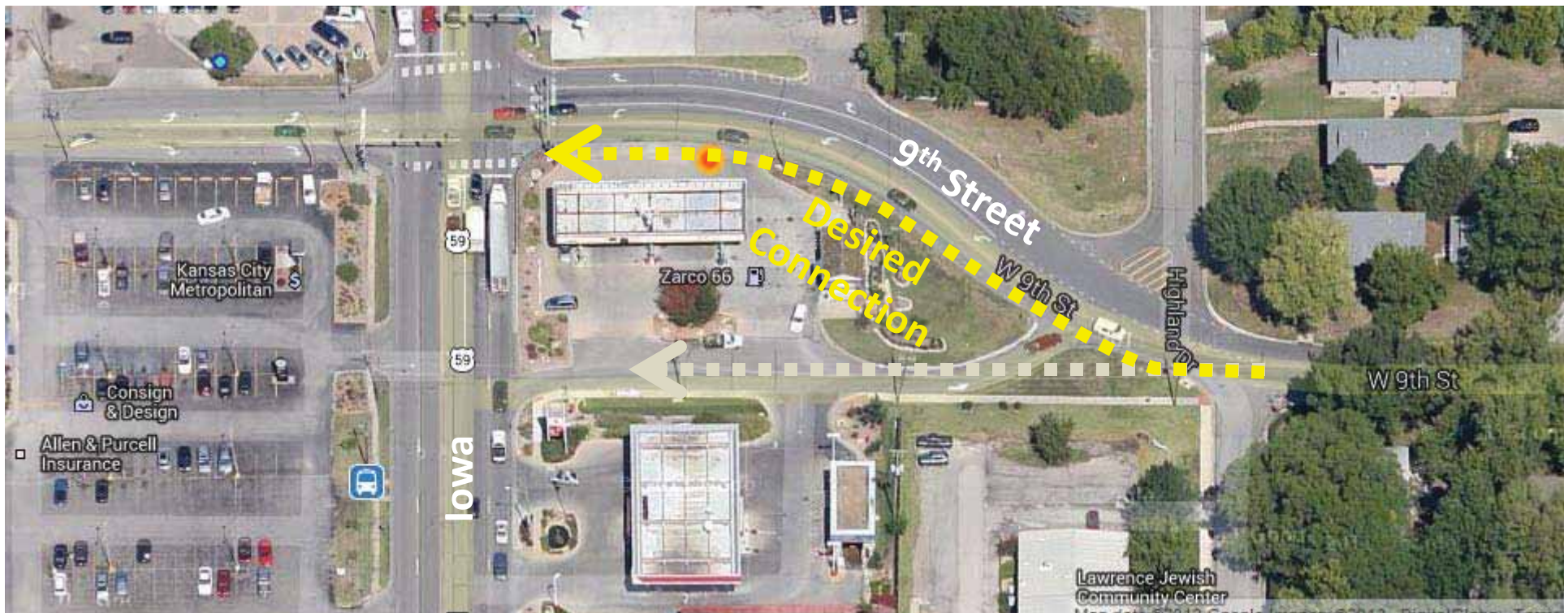
“Sidewalk that goes down 9th street doesn't lead to stop light-- instead jogs down the access driveway between the gas stations. A person trying to access the stop on the west side of Iowa would need to pass through the gas station to access the crossing.”





An Online Comment...

- “Sidewalk that goes down 9th street doesn't lead to stop light-- instead jogs down the access driveway between the gas stations. A person trying to access the stop on the west side of Iowa would need to pass through the gas station to access the crossing.”

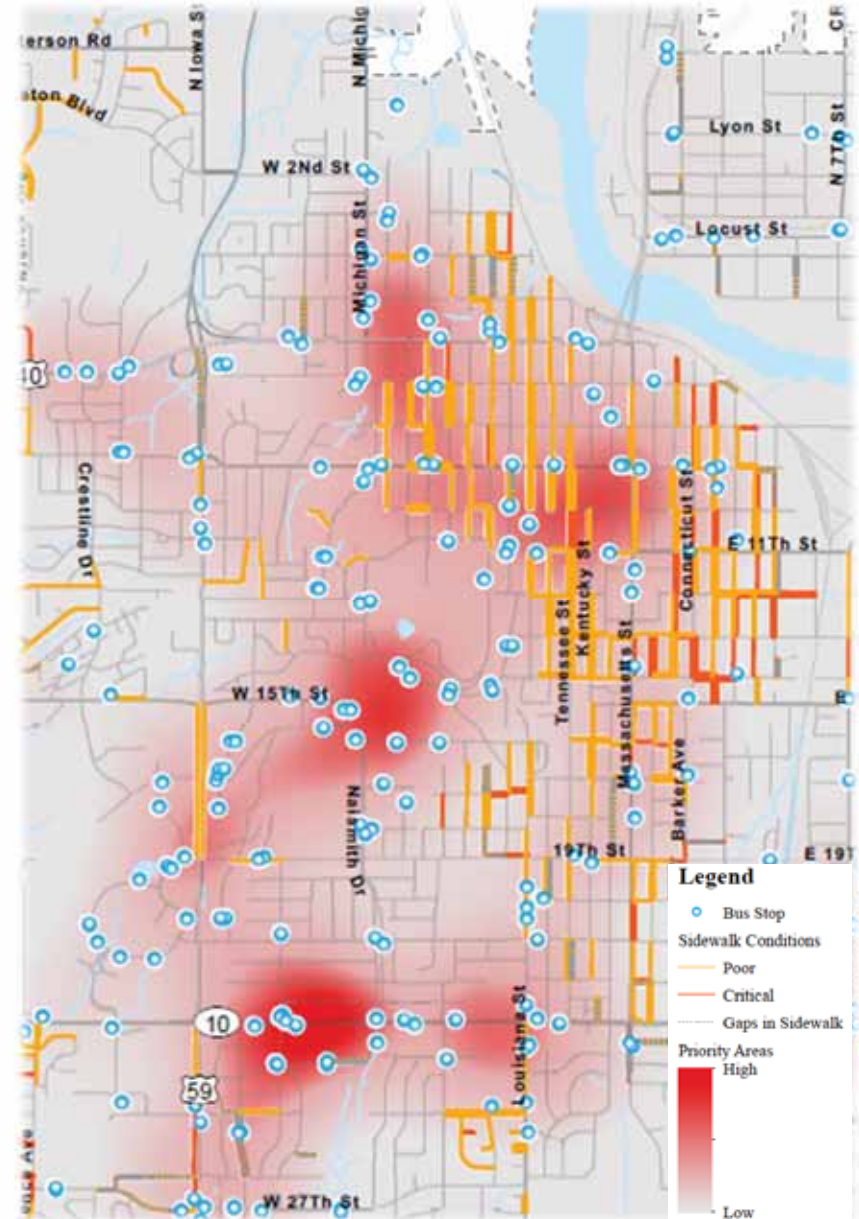




Evaluation Process

User input and quantitative metrics will be used to identify bus stops for further analysis:

- Low to moderate income
- Persons with disabilities
- Traffic volumes and speeds
- Lane width
- Number of lanes
- Connectivity to commercial areas, universities, schools and parks
- Connections to bicycle facilities
- Number of transit routes served





What You Can Tell or Show Us

- What obstacles prevent you from riding fixed-route transit in the Lawrence Area
- What obstacles do you face when you ride transit in the Lawrence Area
- What type of improvements would be most beneficial to enhance pedestrian connections to bus stops
 - ✓ Sidewalk improvements
 - ✓ Bus stop / shelter improvements
 - ✓ Street crossing improvements
 - ✓ Bus pullouts
- Where should these improvements be made

