

Fixed-Route Transit and Pedestrian Accessibility Study

Transit-Pedestrian Accessibility Issues

Lack of Connectivity Between Bus Stop and Developments



Bus Stop in Front of Dillion's on 23rd Street

Lack of Concrete Pads and Shelters at Major Bus Stops



Bus Stop on Naismith, south of 23rd Street

Sidewalks in Disrepair or Missing Sidewalk Segments



Naismith Drive, south of 19th Street

Need for Improved Ped Crossings Near Bus Stops (Mid-Block)



Ped Crossing Near Bus Stop on 33rd Street

Transit-Pedestrian Accessibility Issues

Bus Boarding and Alighting



← **Bus Stop on 33rd Street
(near Kohl's and Wal-Mart)**
– No concrete connection
between sidewalk and
roadway.

**Bus Stop on 23rd Street
(in front of Dillon's)** →
– Example of a good
connection between
sidewalk and roadway.

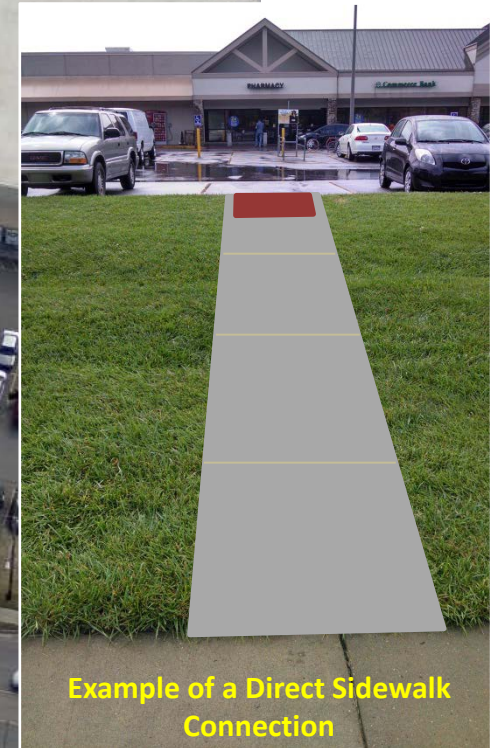


Transit-Pedestrian Accessibility Issues

Lack of Connectivity Between Bus Stop and Developments

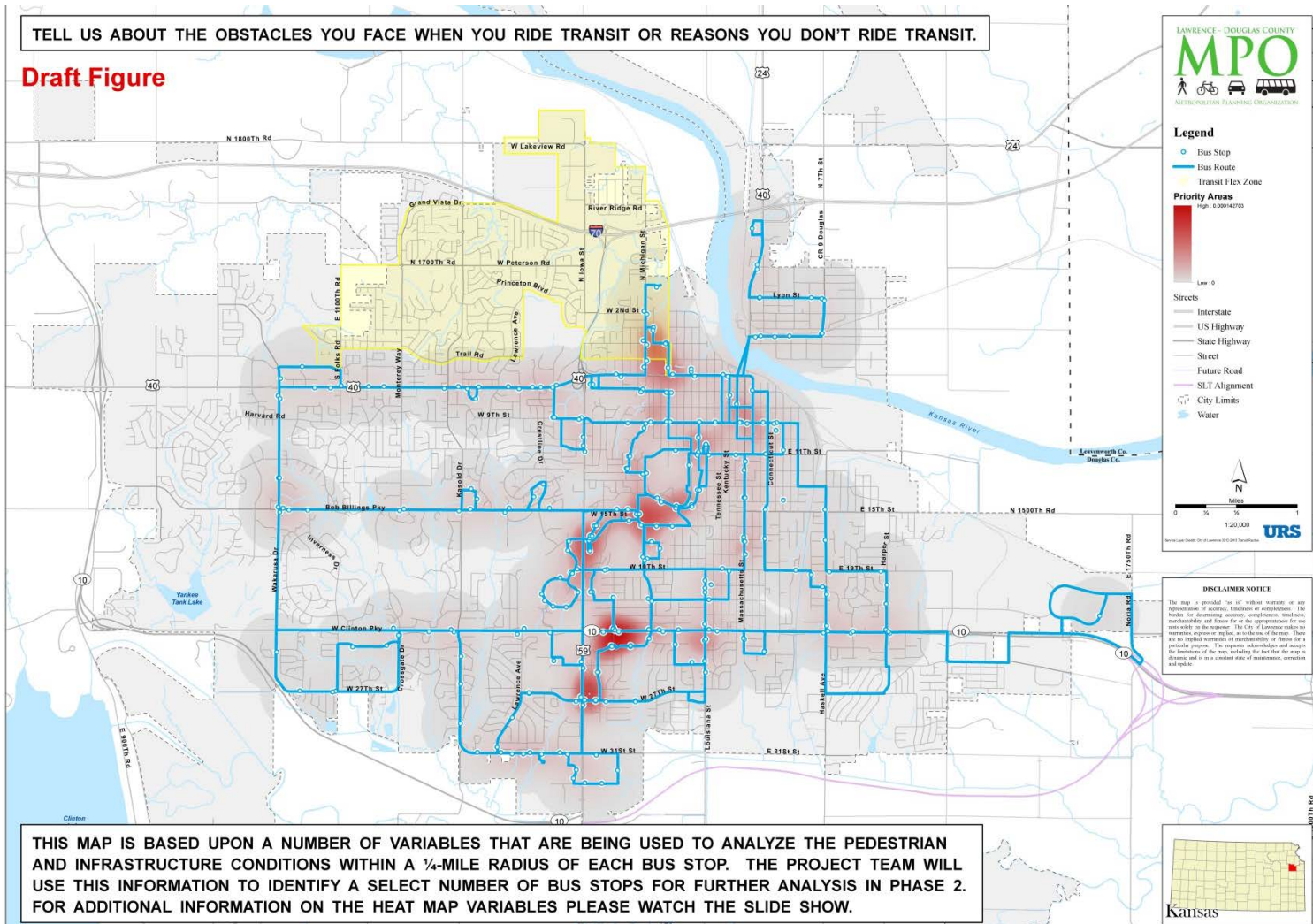


Transit-Pedestrian Accessibility Issues



Phase 1 Evaluation – Heat Map

Bus Stops Scored using Variables that Impact Pedestrian Accessibility



Phase 2 Evaluation – Targeted Corridors

The Heat Map was used to identify issues in Targeted Corridors, such as 6th Street.



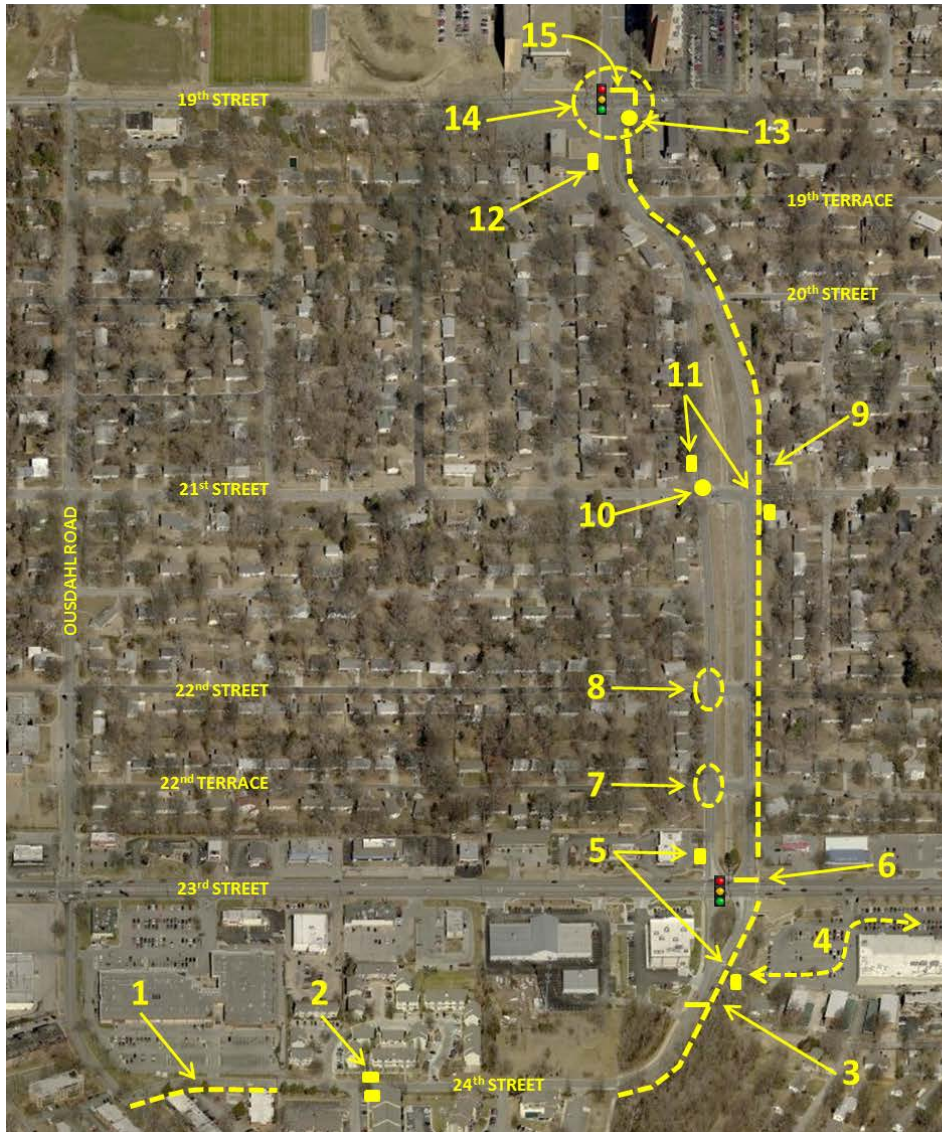
6th Street Transit/Ped Issues

#	ISSUE
1	.75 Miles with no N/S crossing
2	Curb ramps and ped push buttons need improvement
3	Bus stops with no amenities
4	Missing crosswalk paint on high speed crossing
5	Access management issue and sidewalk in disrepair
6	Bus stops with no amenities
7	Sidewalk in disrepair

#	ISSUE
8	Courtesy walk on south side but not north side
9	Good example of sidewalk connection to commerce
10	Severe grade at curb ramp
11	Sidewalk deficiencies - site presently in redevelopment
12	Bus stop on Maine Street with no amenities
13	Big lip at curb ramp - SE corner

#	ISSUE
14	Missing crosswalk paint near school
15	Bus stops with no amenities
16	NW corner curb ramp needs improvement
17	Curb ramps in severe disrepair and steep grades
18	Bus stops with no amenities
19	No N/S crosswalks to Robinson Park

Phase 2 Evaluation – Targeted Corridors



**Naismith Drive
 Transit/Ped Issues**

#	ISSUE
15	Missing crosswalk paint
14	Inaccessible ped push buttons
13	Ped push button on back side of pole
12	K-10 Connector bus stop - no amenities
11	Bus stops with no amenities
10	Curb ramp/crosswalk very skewed
9	Missing sidewalk - dirt path
8	Curb ramp leads to catch basin
7	Curb ramp leads to catch basin
6	Missing crosswalk paint
5	Bus stops with no amenities
4	Poor connectivity to commercial area
3	Missing sidewalk / connection to bus stop
2	Bus stops with no amenities/crossing
1	Missing sidewalk - dirt path

Recommendations

Construct Sidewalks on Both Sides of Arterials



Naismith Drive, near 24th Street

Recommendations

Construct Sidewalks on Both Sides of Arterials



AFTER

Naismith Drive, near 24th Street

Recommendations

Enhance Pedestrian Crossings Near Major Bus Stops



BEFORE

Naismith Drive, just south of 23rd Street

Recommendations

Enhance Pedestrian Crossings Near Major Bus Stops



AFTER

Naismith Drive, just south of 23rd Street

Text here...

Construct ADA Accessible Sidewalks



Naismith Drive, just south of 19th Street

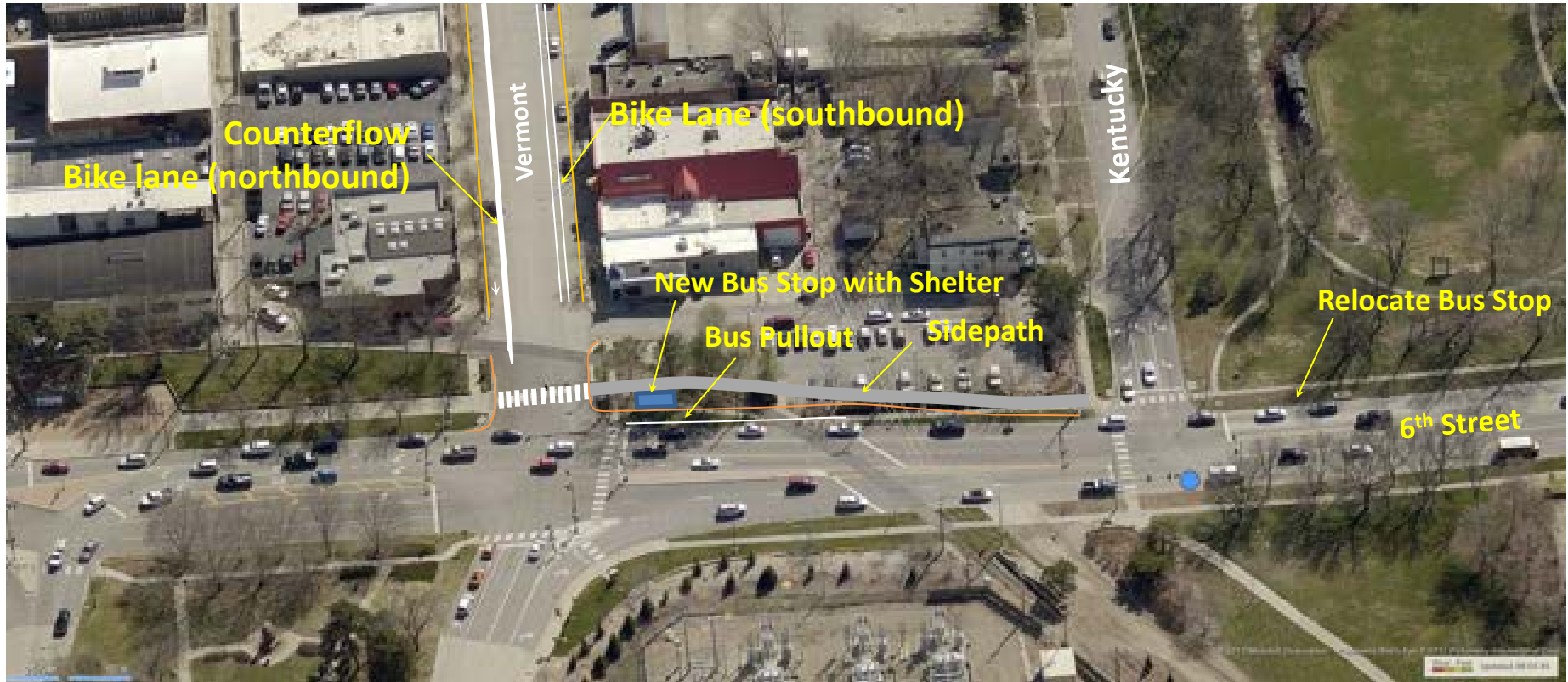
Construct ADA Accessible Sidewalks



Naismith Drive, just south of 19th Street

Study Coordination

Example of Potential Coordinated Transit and Bikeway Improvements



6th Street (Kentucky to Massachusetts)