

Countywide & Small City Bicycle Facilities

Proposed County Bicycle Facilities

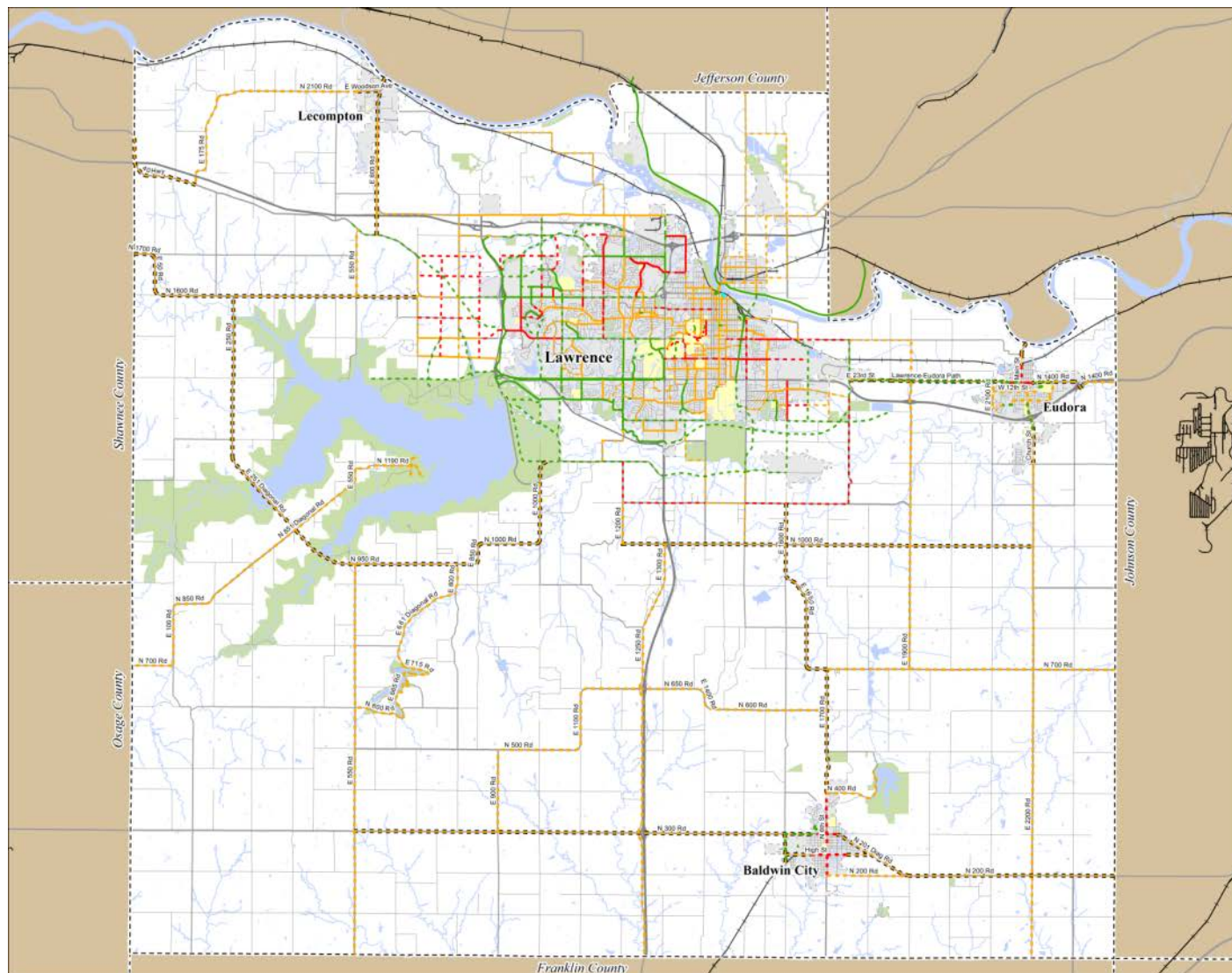
Objectives

- Provide connections between Lawrence and smaller cities within Douglas County
- Connect to parks and other destinations
- Provide connections into neighboring counties
- Provide facilities that serve both recreational and transportation bicyclists



New paved shoulders on U.S. 56 at E. 1600 near Baldwin City

Proposed County Bicycle Facilities



MPO Multimodal Studies Project
 Existing & Proposed Bikeways

Legend

Existing Bikeways

- Shared Use Path (Green line)
- Bike Lane (Red line)
- Bike Route (Orange line)

Proposed Bikeways

- Shared Use Path (Dashed Green line)
- Bike Lane (Dashed Red line)
- Bike Route (Paved Shoulder) (Dashed Orange line)
- Bike Route (Dotted Orange line)

Other Symbols

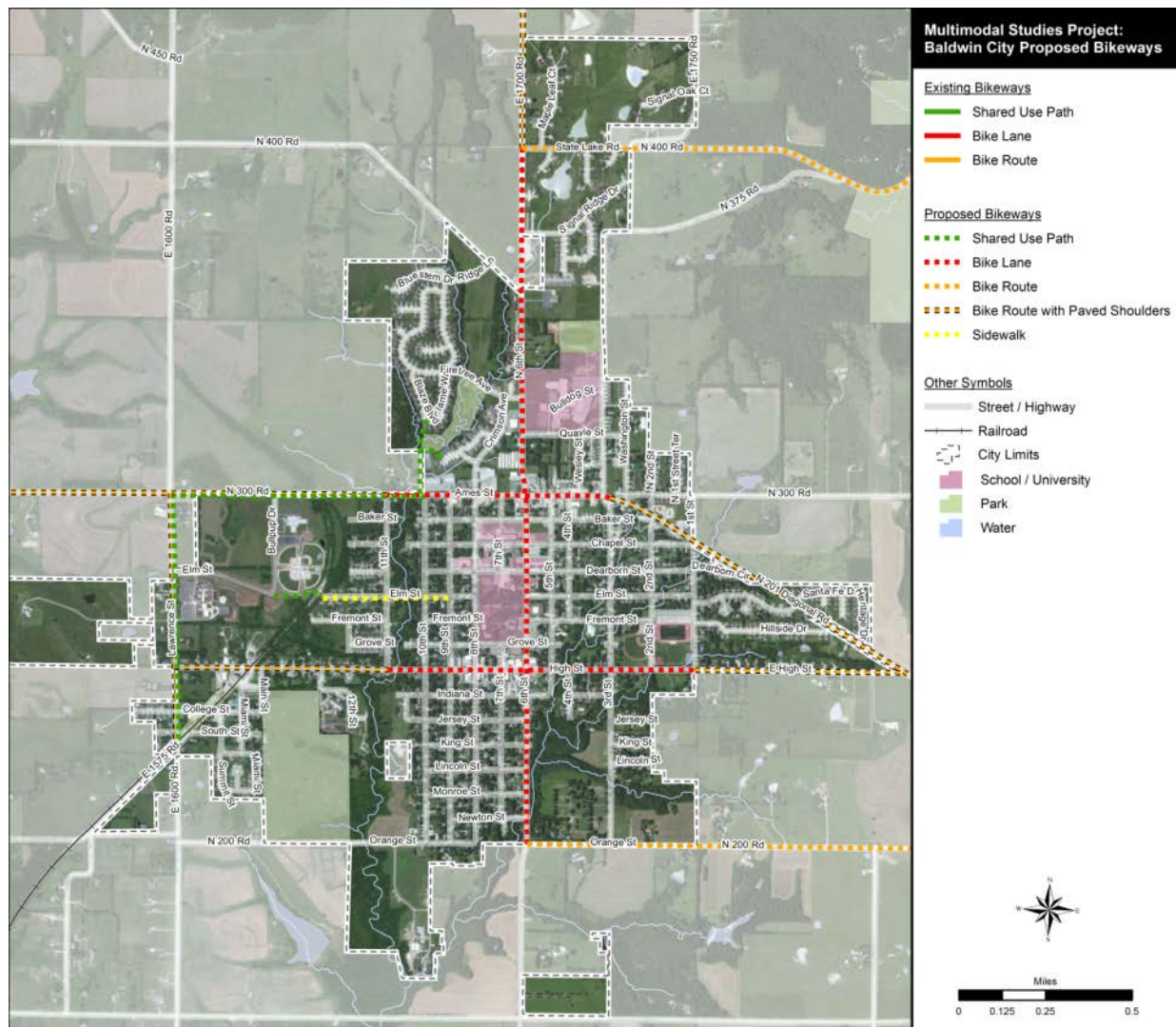
- Street / Highway (Black line)
- Railroad (Black line with cross-ticks)
- City Limits (Grey shaded area)
- County Limits (Dashed black line)
- School / University (Yellow square)
- Park (Green square)
- Water (Blue square)

Scale: 0 to 6 Miles

Proposed Baldwin City Facilities

Bikeway Improvements

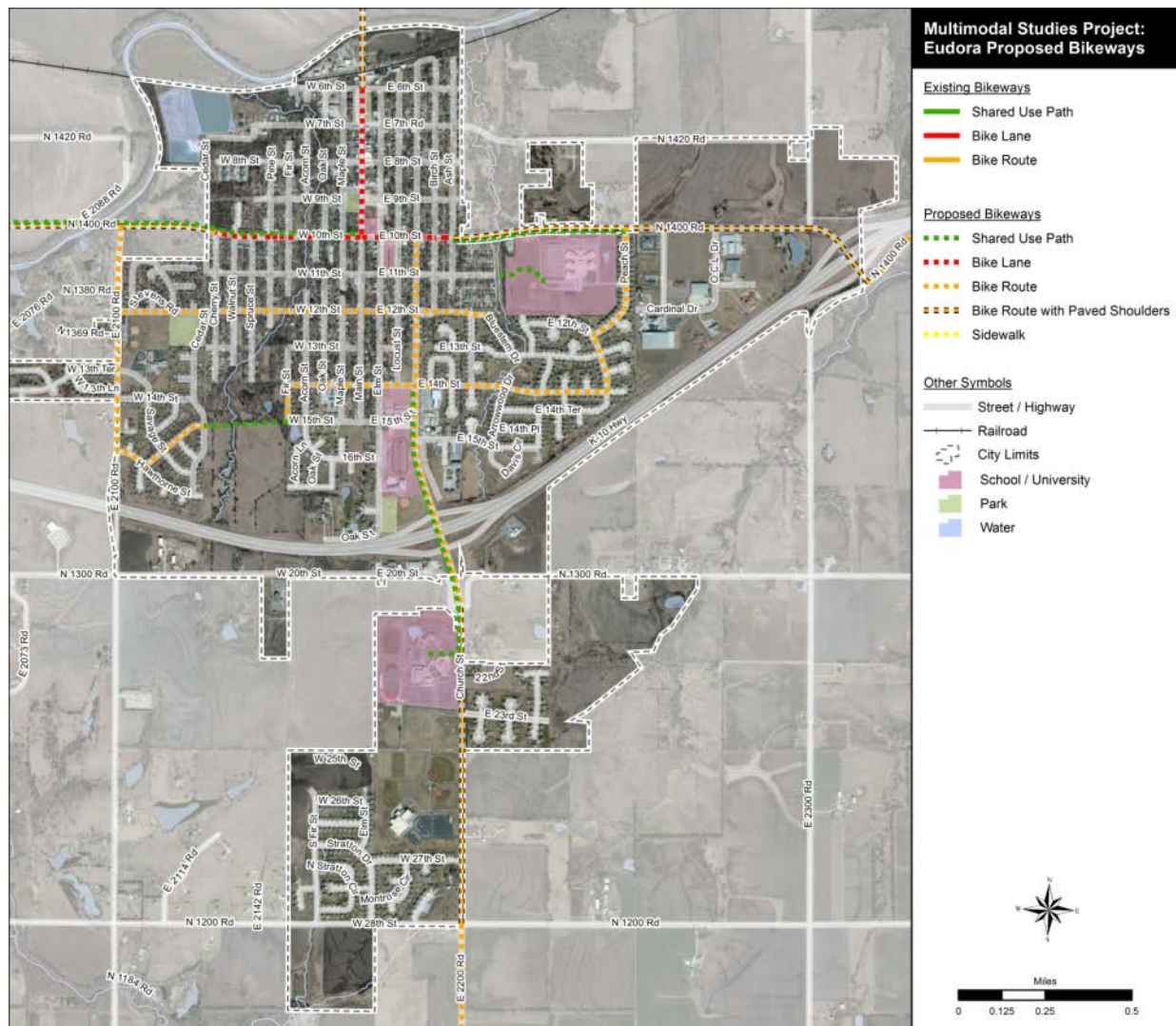
- Bike lanes on 6th, Ames, and High Streets
- Better path connections to the schools
- Bike routes in/out of the city



Proposed Eudora Facilities

Bikeway Improvements

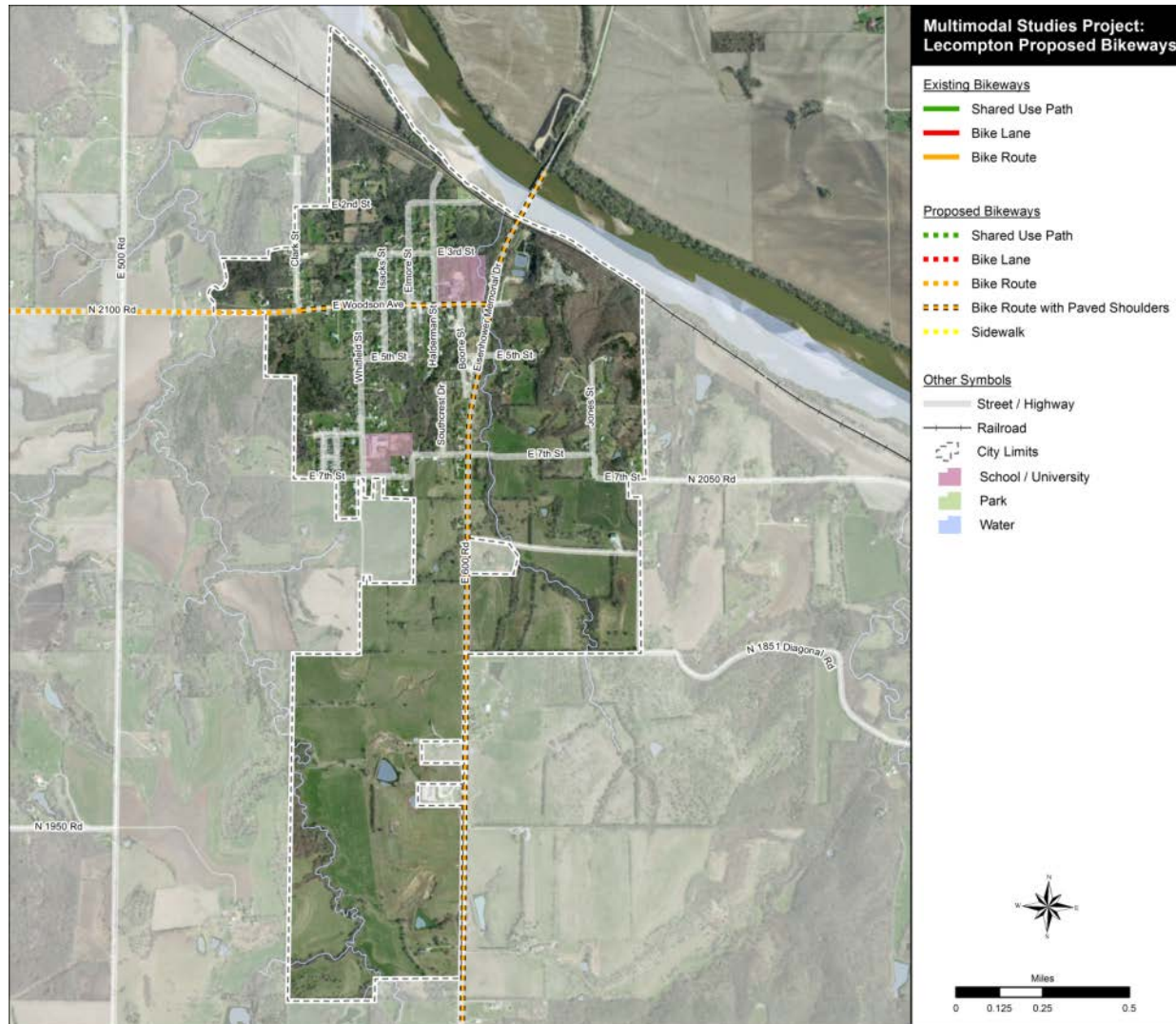
- Bike lanes on Main and 10th Streets
- Better path connections to the schools
- Bike routes in/out of the city
- Path west to Lawrence



Proposed Lecompton Facilities

Bikeway Improvements

- Signed bike routes on Woodson Avenue and Eisenhower Memorial Drive
- Bike routes in/out of the city

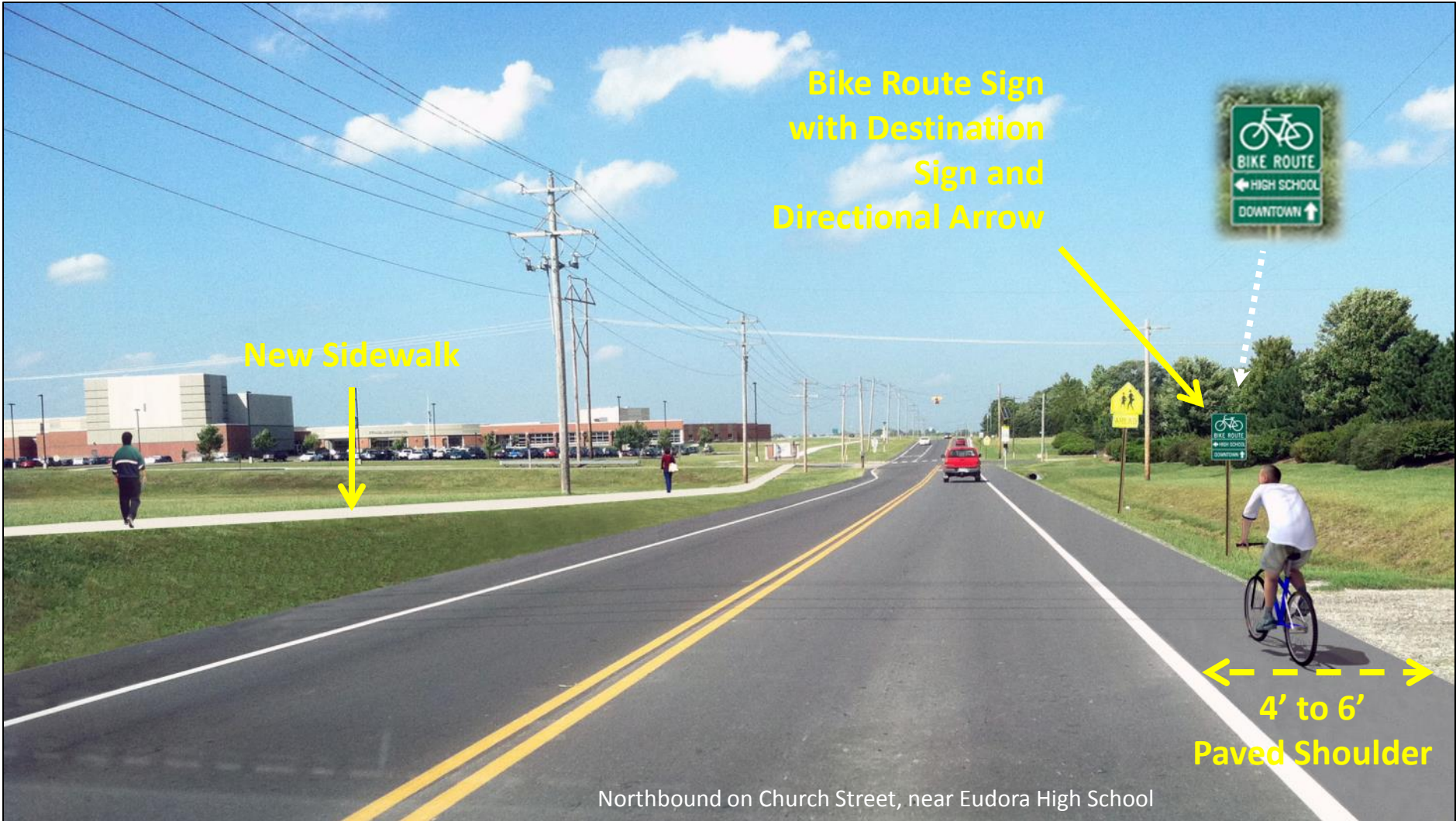


Church Street (Eudora) – Before



Northbound on Church Street, near Eudora High School

Church Street (Eudora) – After



Rural Paved Shoulder – Before



Typical Rural Douglas County Two-Lane Road

Rural Paved Shoulder – After



**Bike Route Sign
with Destination
Sign and
Directional Arrow**

**4' to 6'
Paved Shoulder**

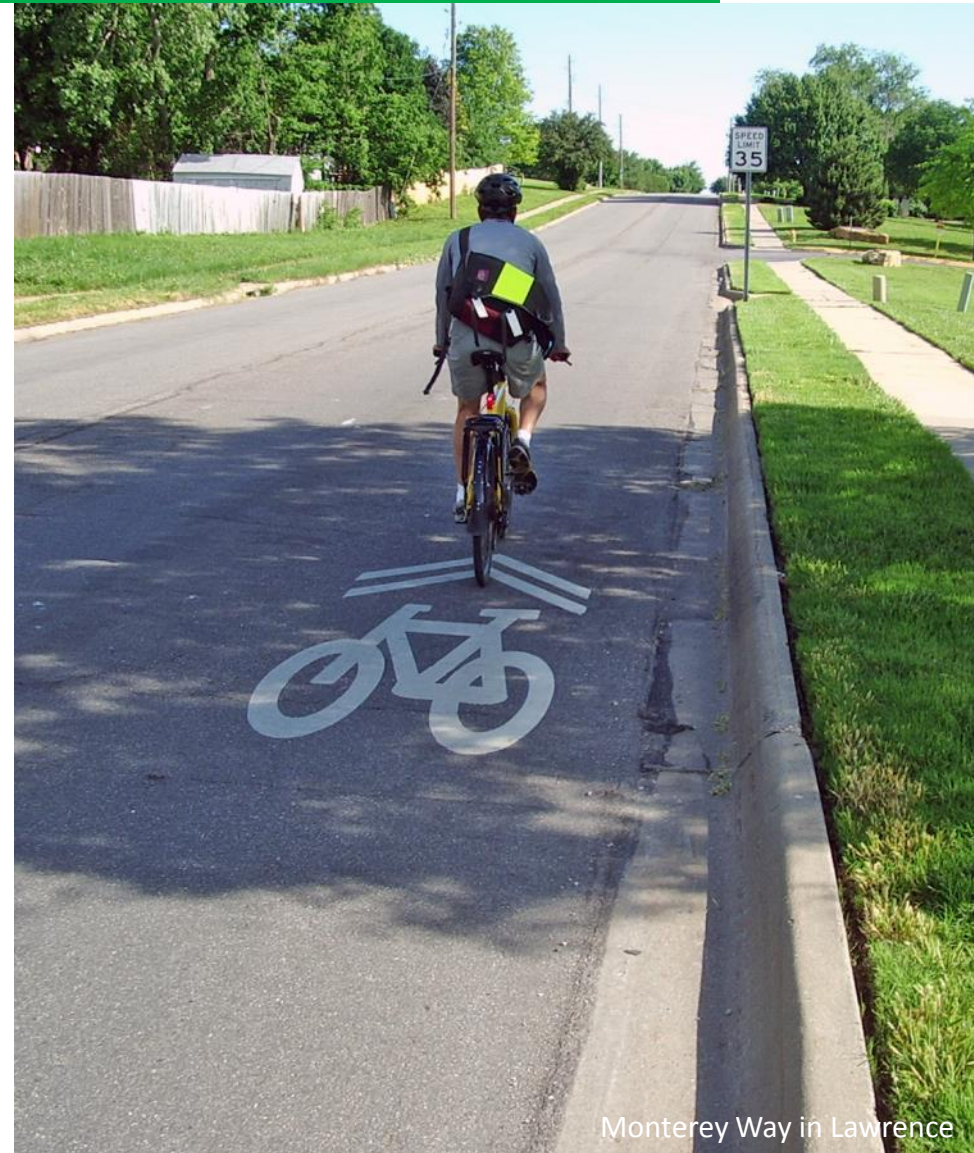
Typical Rural Douglas County Two-Lane Road

Lawrence Area Bicycle Facilities

Lawrence Area Bikeway Updates

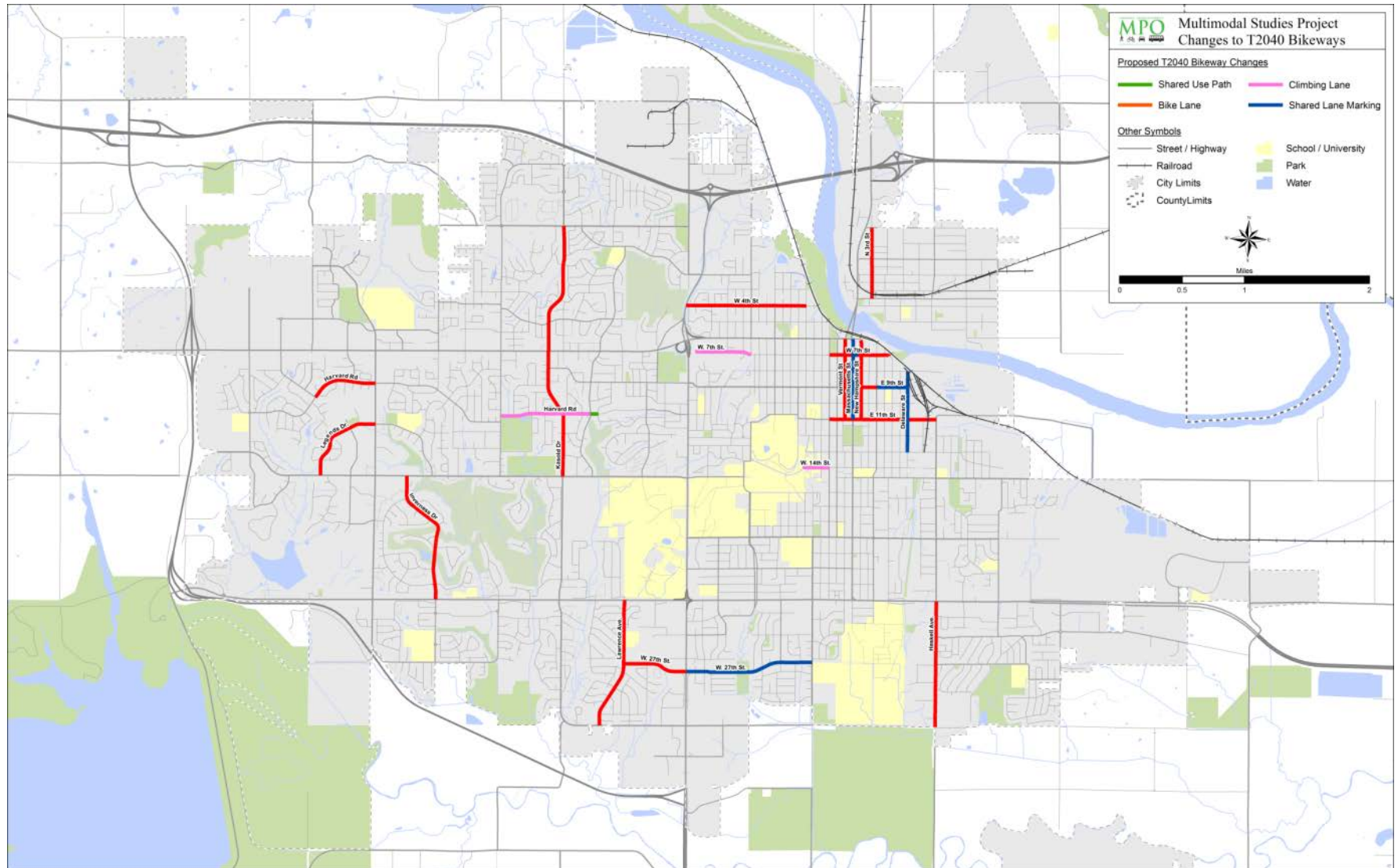
Objectives

- Review of existing and proposed bikeways in the Lawrence Urban Area
- Recommend changes to the existing and proposed network

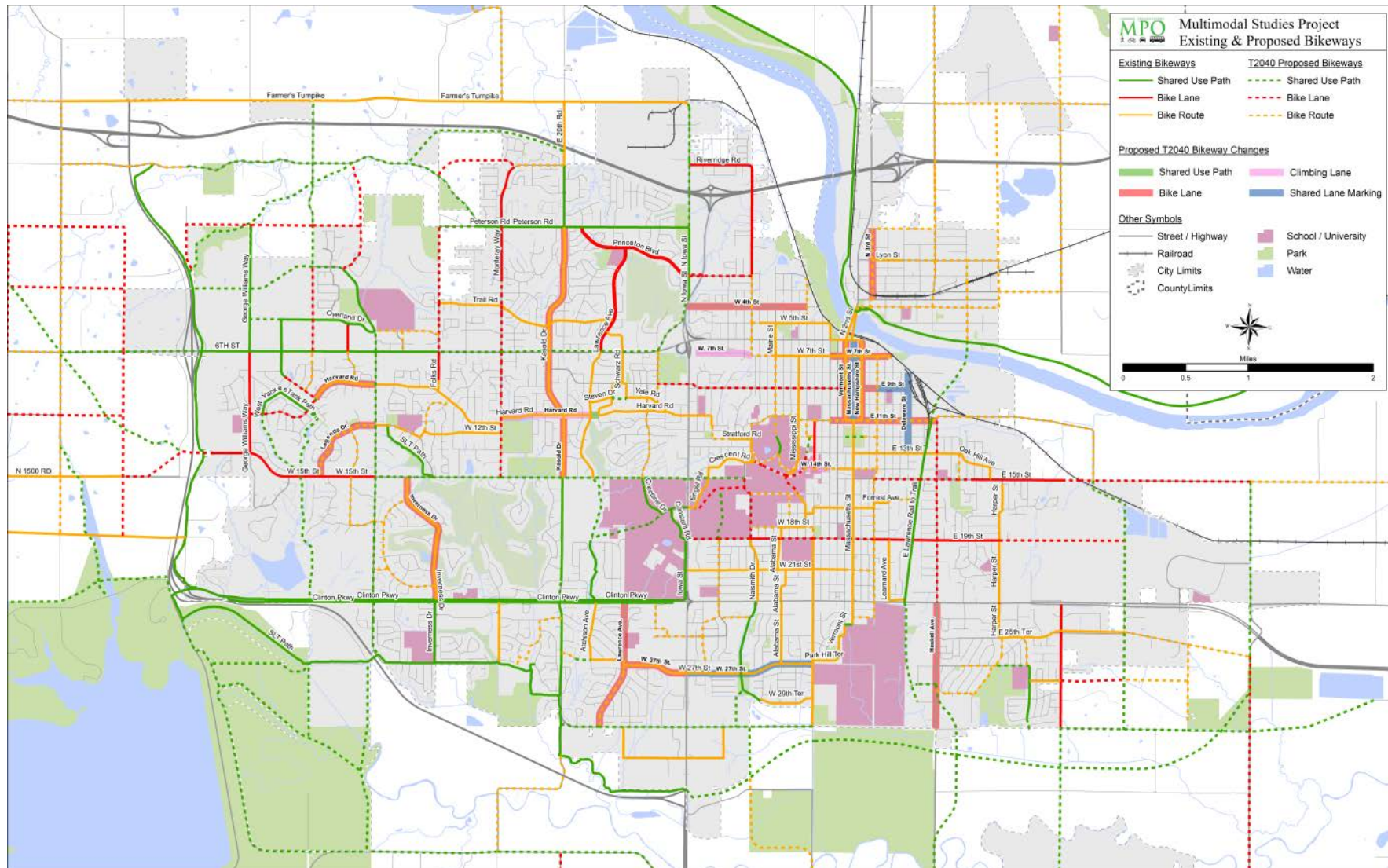


Monterey Way in Lawrence

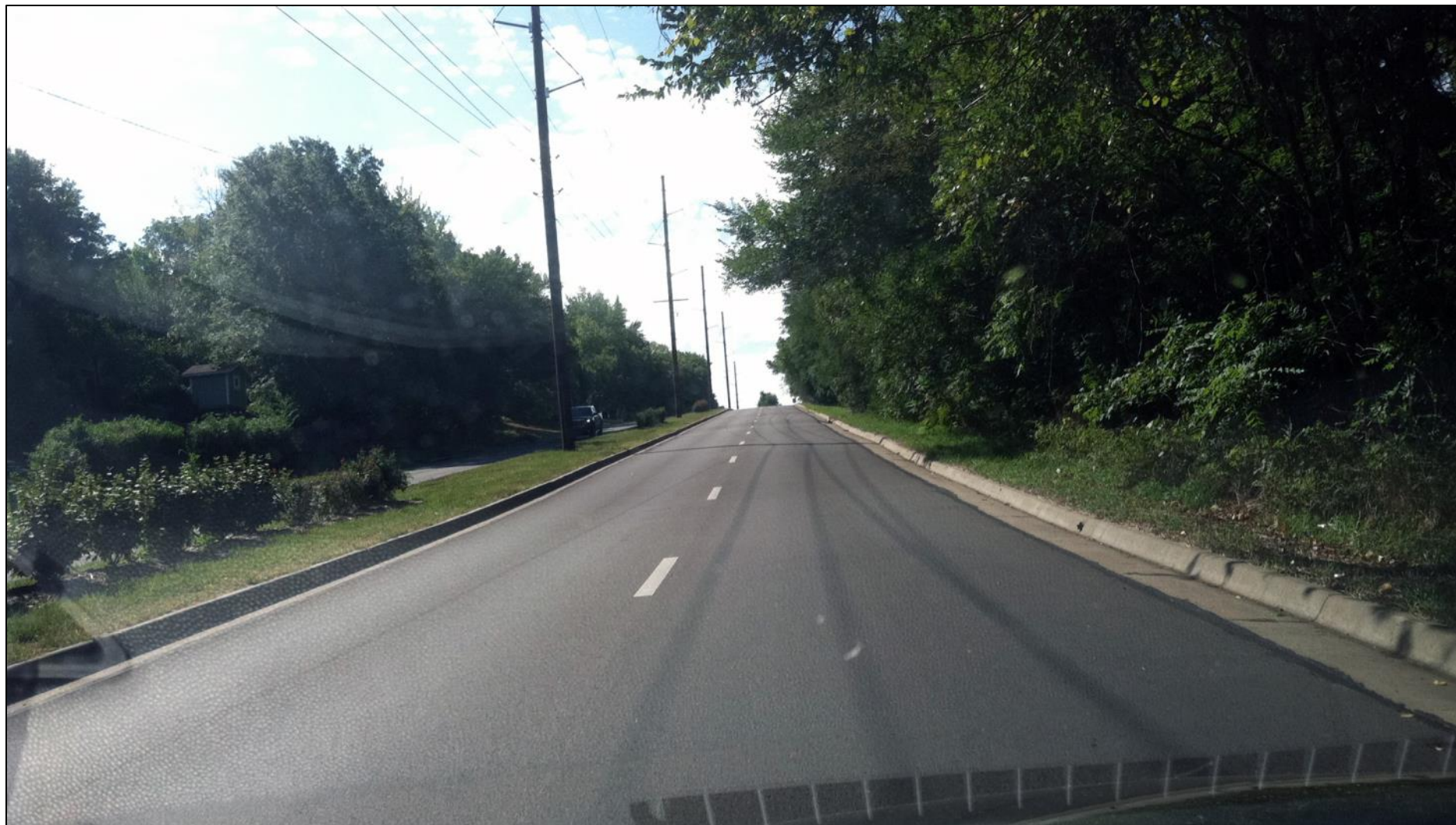
Lawrence Area Bikeway Updates



Lawrence Area Full Updated Network



Kasold Street – Before



Kasold Street – After

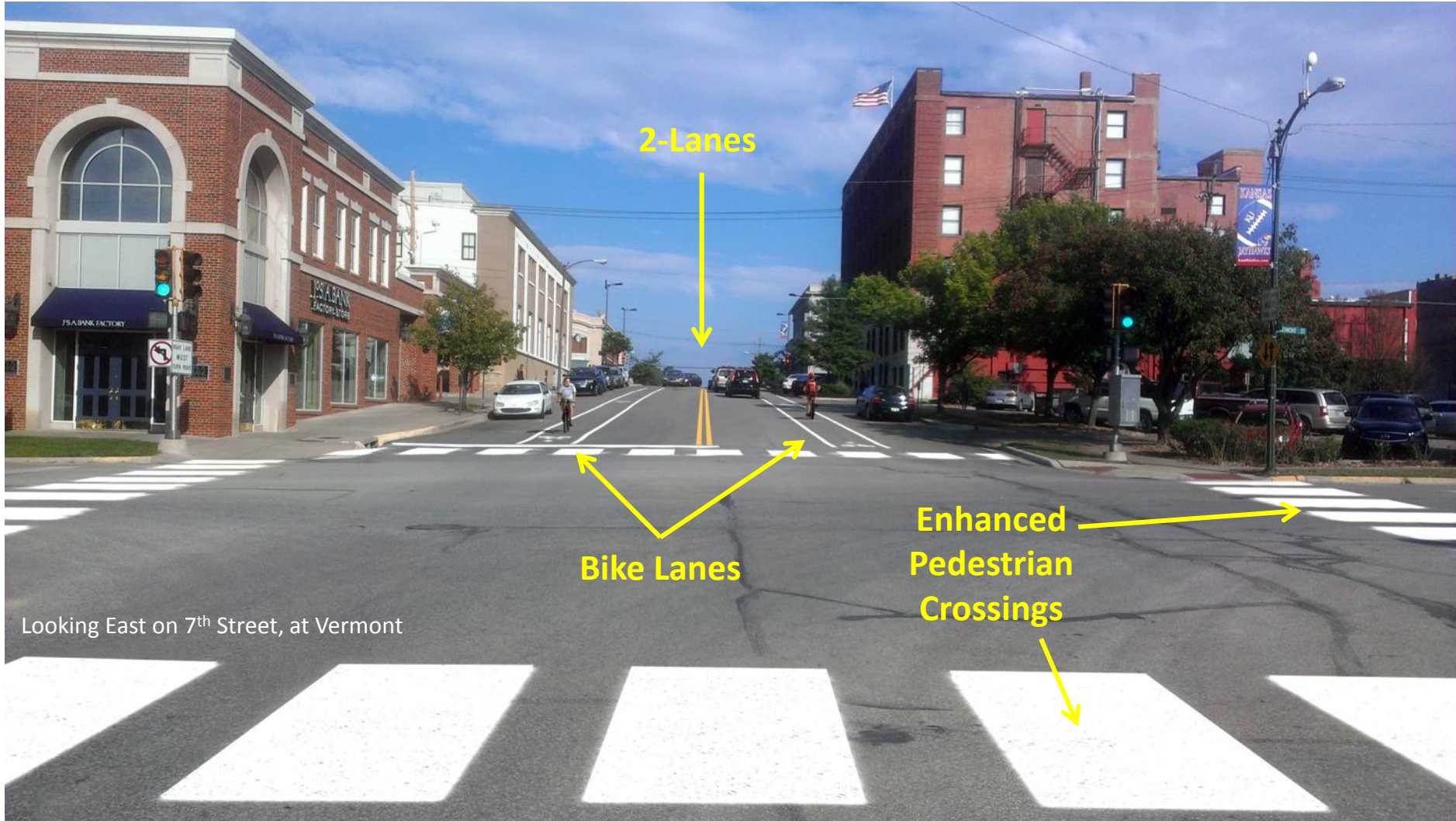


7th Street @ Vermont – Before

2-Lanes with Center
Turn Lane; No Bike
Accommodations



7th Street @ Vermont – After



Looking East on 7th Street, at Vermont

Hobbs Park to Constant Park Connection

Hobbs to Constant Park Connection

Objectives

- Connect Hobbs Park to Constant Park
- Provide better connection around downtown Lawrence

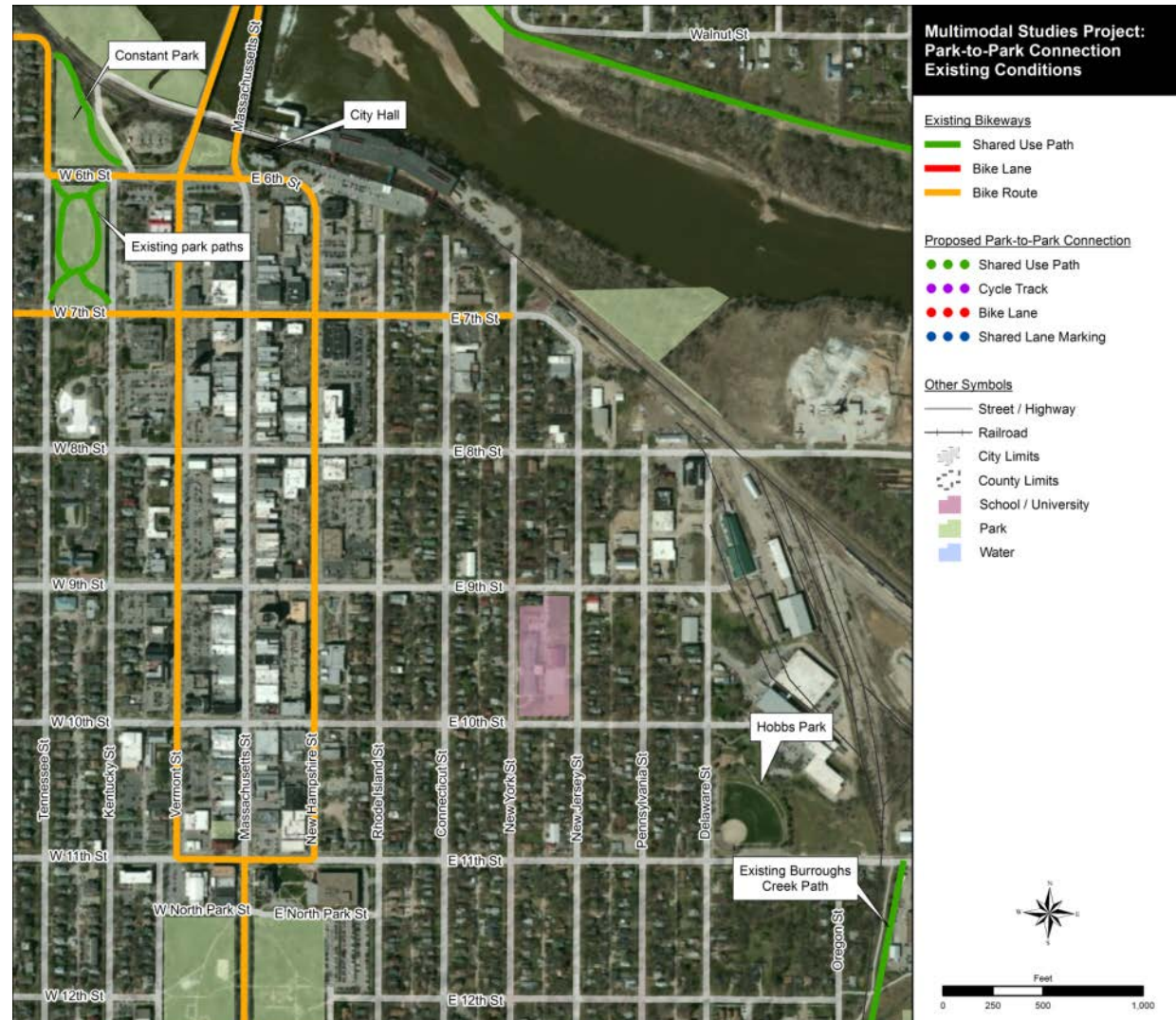


Existing sidewalk into Hobbs Park

Hobbs to Constant Park Connection

Existing Conditions

- No clear connection between parks
- Bicyclists use sidewalks or busier streets than they are comfortable with

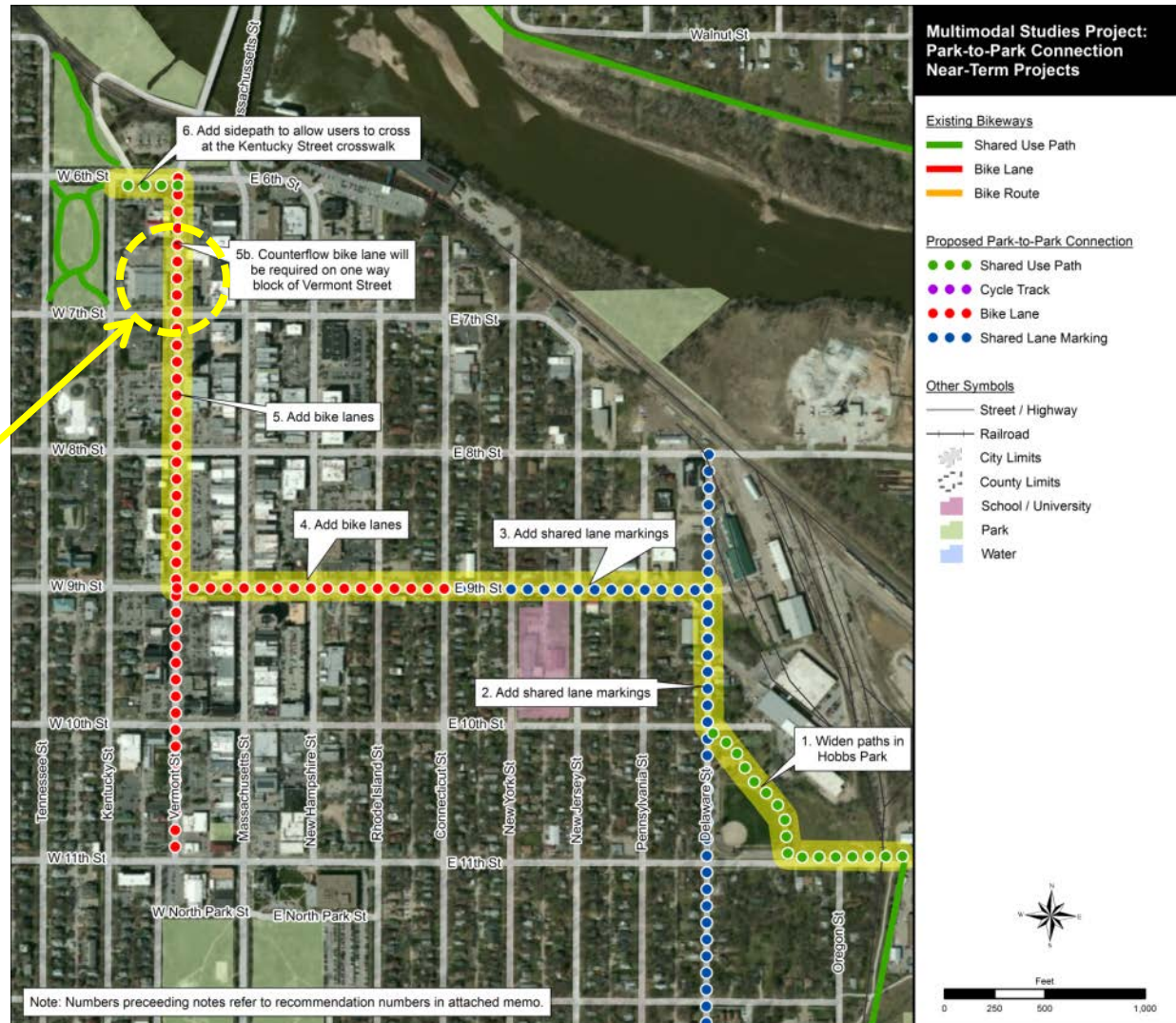


Hobbs to Constant Park Connection

Near-Term Improvements

- Provide clear on-street connection between the two parks
- Use bike lanes, shared lane markings, and clearly marked bike routes

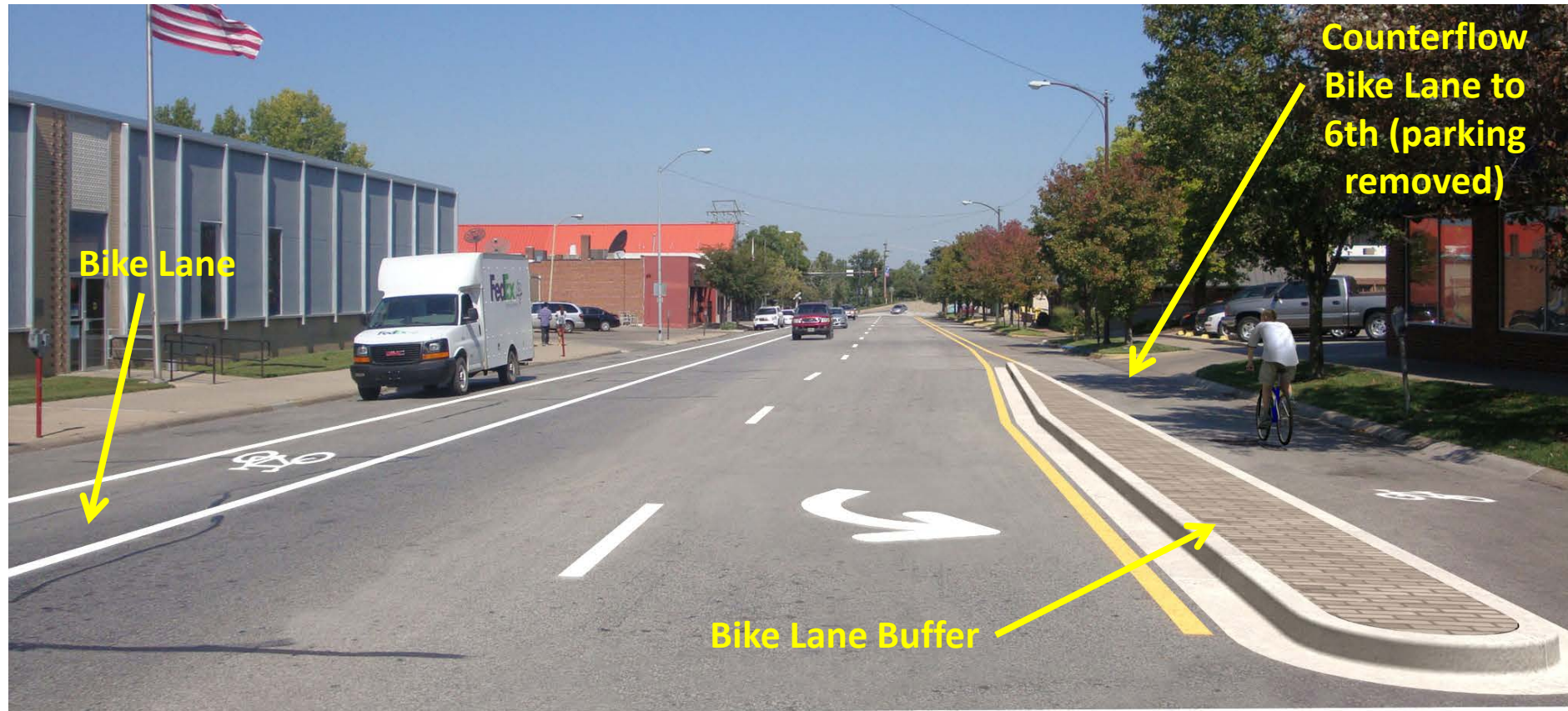
See photo on next slide for proposed improvement along Vermont.



Vermont @ 7th Street – Before



Vermont @ 7th Street – After



Looking North on Vermont, at the intersection of 7th Street. Vermont is one-way, southbound.

Hobbs to Constant Park Connection

Mid-Term Improvements

- Provide off-street bikeways for much of the route
- Continue to use on-street bikeways on low-volume roadways



Hobbs to Constant Park Connection

Long-Term Improvements

- Complete off-street connection from Hobbs to Constant Park
- Provide extension of Burroughs Creek Path to Downtown Lawrence
- Provide path undercrossing of major Kansas River bridges

