



Multimodal Planning Studies

Countywide Bikeway Plan Study

Steering Committee Kickoff Meeting

April 5, 2013



Agenda

1. Multimodal Studies Overview

- a) Project Team
- b) Study Elements
- c) Project Schedule

2. Countywide Bikeway Plan Study

- a) Issues Identification/Discussion

3. Online Interactive Mapping Tool

Project Team



- **Dave Kocour**
 - Principal in Charge
- **Dan Meyers**
 - Project Manager
- **Jim Meyer**
 - Deputy Project Manager / Task Leader
- **Nalini Johnson**
 - Project Planner

Project Team



- **Tom Huber**
 - Countywide Bicycle Plan
 - Support Fixed-Route/Pedestrian Access Study
- **Kevin Luecke**
 - Bicycle Planning
- **Bob Patten**
 - Bicycle Planning
- **Eric Mongelli**
 - Engineering



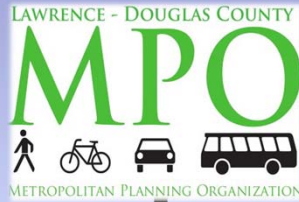
Project Team

vireo
Patti Banks Associates • Community ReDesigned

- **Triveece Harvey**
 - Public Outreach
- **Steve Rhoades**
 - Support Bicycle Planning



Multimodal Studies



**Fixed-Route and Pedestrian
Accessibility Study**

Steering Committee #1



**Commuter Park & Ride
Study**

Steering Committee #2

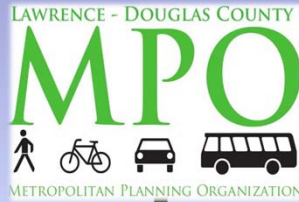


**Countywide Bicycle Plan
Study**

Steering Committee #3



Multimodal Studies



**Fixed-Route and Pedestrian
Accessibility Study**

Steering Committee #1



**Commuter Park & Ride
Study**

Steering Committee #2



**Countywide Bicycle Plan
Study**

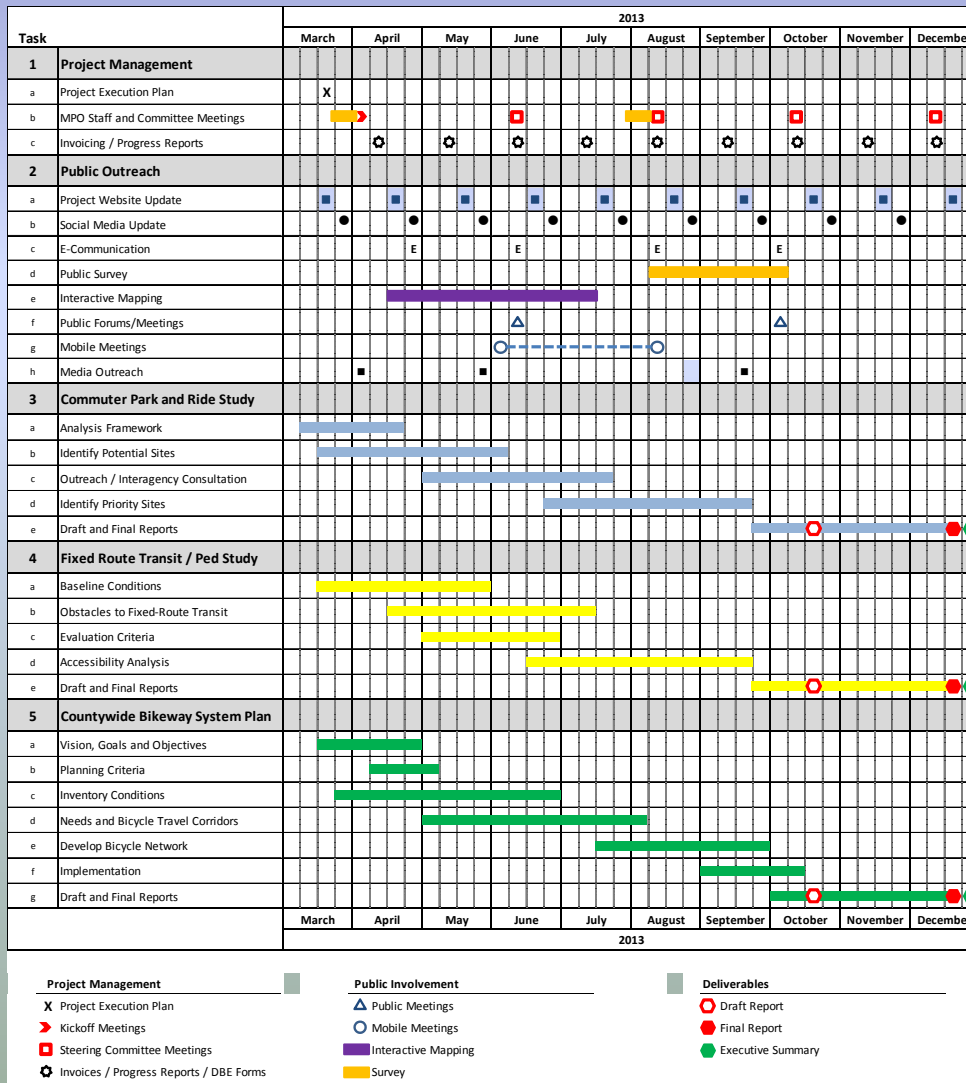
Steering Committee #3



Public Outreach



Overall Project Schedule



- Project complete by December 2013
- 3 or 4 additional Steering Committee meetings
- 2 public meetings
- Draft report – October 2013

Countywide Bikeway Plan Schedule

Task		2013									
		March	April	May	June	July	August	September	October	November	December
1	Project Management										
a	Project Execution Plan	X									
b	MPO Staff and Committee Meetings		▶		◻		▶	◻		◻	◻
c	Invoicing / Progress Reports		⊛	⊛	⊛	⊛	⊛	⊛	⊛	⊛	⊛
2	Public Outreach										
a	Project Website Update	■	■	■	■	■	■	■	■	■	■
b	Social Media Update	●	●	●	●	●	●	●	●	●	●
c	E-Communication		E		E		E		E		
d	Public Survey						▶	▶	▶		
e	Interactive Mapping		▶	▶	▶	▶	▶				
f	Public Forums/Meetings				△				△		
g	Mobile Meetings				○	○	○	○			
h	Media Outreach		■		■			■			
5	Countywide Bikeway System Plan										
a	Vision, Goals and Objectives	▶	▶	▶							
b	Planning Criteria		▶	▶							
c	Inventory Conditions	▶	▶	▶	▶	▶					
d	Needs and Bicycle Travel Corridors			▶	▶	▶	▶				
e	Develop Bicycle Network					▶	▶	▶	▶		
f	Implementation							▶	▶		
g	Draft and Final Reports								○	▶	▶

Purpose

- Revise/update Existing MPO Plan
- Expand to all of Douglas County and Regionally
- Particular focus on Problem Areas

Vision, Goals, Objectives

- Where do you want to be in 10 years, 20 years?
- Has the vision and goals changed from the current Lawrence Plan?
- What should we use to measure progress?



Network Plan

- Lawrence Plan
- Douglas County Plan
- Transitions
- Establish Priorities



Special Area Focus

- 6th and Iowa
- Hobbs to Constant Park Connector
- Baldwin City Elementary School
- Eudora Elementary and Middle School



Most Pressing Needs

- **Regional Connections:** Eudora, Desoto, and greater Johnson County
 - Between Lawrence and Lone Star Lake
 - Connection from current north end of Hike/Bike path to Route 438
 - Route 458 to Lone Star Lake, Route 1055 to Baldwin City
- **Expand existing facilities that work:** 23rd and LA, LHS, FSHS, and downtown areas
- **Need a bikeway system** that is actually a system
 - Get across town, from neighborhood to neighborhood, destination to destination, just as major arterial roads do for cars
 - Arterial roads currently are barriers between destinations for non-automotive travel
 - Bridge these barriers to connect bike and walking routes within city limits, and secondarily within the outlying county, to inter-connect communities in the region
 - Iowa street, particularly between East and West Campus (23rd to 15th Streets), as well as from 15th to 6th streets
 - Entire length of 23rd Street from the east edge of town to around Kasold (crossings get easier as you head west).
 - 6th Street, again from the east edge of town to about Kasold Drive
- **Major routes:** Iowa, 6th, 9th, and Massachusetts
 - Intermittent bike lanes and sidewalks, but are by no means complete, safe cycling routes

Goals in the Next 10 Years

- Connect Lawrence and Eudora
- Improvements to accommodate bikes in planned road improvements
 - Connect north end of existing Hike/Bike path to Route 438
- Bikeways and walking system that serves the same purpose as arterial routes do for automotive users
 - Clearly marked and intuitive
 - Neighborhood roads that parallel existing arterial roads (for example 21st Street as it parallels 23rd or Trail Rd as it parallels 6th Street)
 - Traffic calming devices are unnecessary
- Identify key routes for bicycle amenity improvements
- Prioritize infrastructure investments for bike lanes/multi-use paths
- Improve signage for cyclists and motorists
- Improve community's education and awareness safe cycling
- Additional cities besides Lawrence adopt Complete Streets policies

Thoughts Regarding Funding

- Increased taxes are not an option; part of the existing program
- In unincorporated areas, most bikeway projects part of road improvement projects, (i.e. addition of paved shoulders).
 - Mostly funded through the county's CIP
- Applying for grants and taking advantage of existing improvements to tack on bike-friendly infrastructure
- Helpful to have a bikeway system plan addressing connectivity
 - As opportunities arise, prioritize and apply for funds
- Pro-active in pursuit of implementing a system
 - A plan will make funding requests for more compelling
- There is local government support for funding key projects
 - Momentum behind the Complete Streets policy

Additional Comments

- Focus on what is attainable; expand from there
- Area is extremely hostile toward cycling, begin with what is clearly acceptable
- Long-term, would be nice to convert old railbeds into bikeways
 - Difficult as most old RR right-of-way has reverted to private property owners
- Opportunity to focus on real plan for the future
- ***Other Comments?***

Online Interactive Mapping

- Public outreach for issues identification
- Comments on all three study elements
- Review draft website...