



Multimodal Planning Studies



Transit and Pedestrian Accessibility Study

Steering Committee Meeting

June 6, 2013

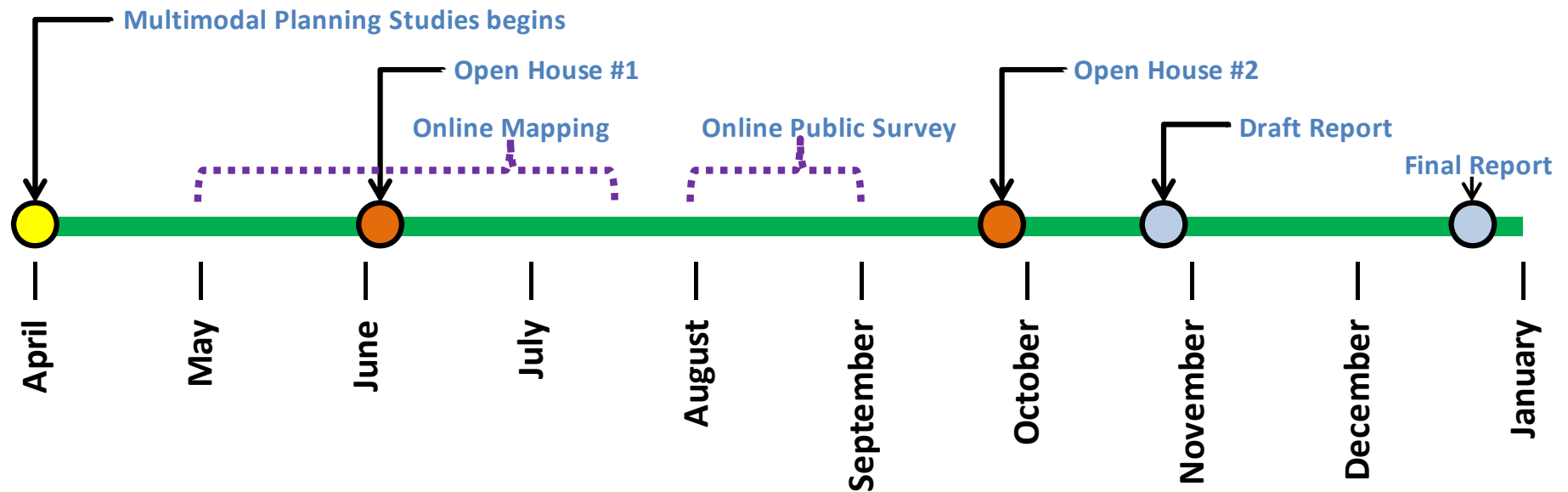


Agenda

1. Update on Project Schedule
2. Update on Interactive Mapping
3. Key Themes from the Open House
4. Evaluation Methodology
5. Stakeholder Outreach (mobile meetings)
6. Upcoming Tasks

Project Schedule

- Key Public Outreach Dates



- Finalize Evaluation Methodology
- Identify Key Locations for Screen Two
- Next Steering Committee Meeting: August 2013

Interactive Online Mapping

Available in all browsers

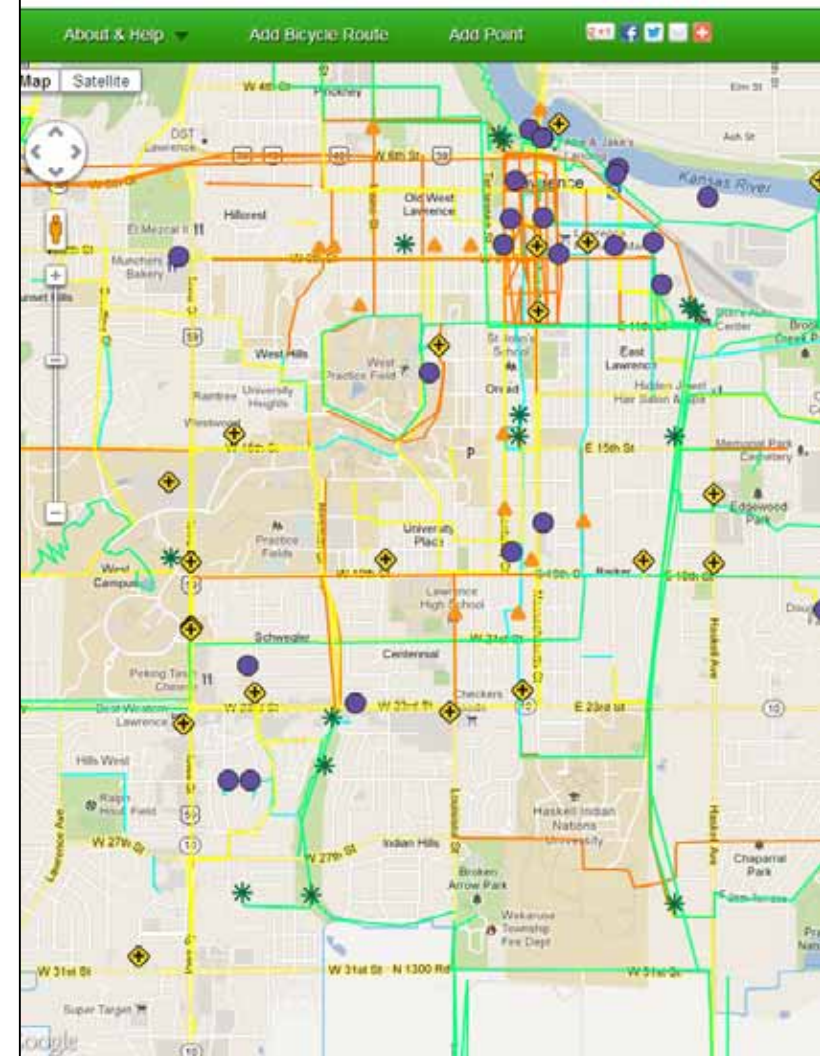
- Bike: <http://tinyurl.com/DouglasCoBike>
- Transit: <http://tinyurl.com/TransitPedAccess>
- P&R: <http://tinyurl.com/DouglasCoPark-Ride>

Users can mark and comment on:

- Specific Bus Stops
- Routes Used to Access Transit
- Problem Intersections / Crossings

Lawrence & Douglas County Multimodal Study: **Bicycling**

Switch Maps: Park & Ride or Transit Access



Key Themes from the Open House



- 6th Street
 - Heavy traffic volumes
 - Difficult intersection crossings
- 19th Street
 - Lack of sidewalks, gaps
 - Need improved bus shelters
- Iowa
 - Lack of sidewalks
- Naismith
 - Lack of sidewalks
- West of Iowa
 - Sidewalks generally OK, connectivity issues
 - Route extensions should better accommodate transit

Evaluation Methodology

Existing Conditions / Infrastructure

- Traffic Volumes
- Travel Speeds
- Roadway Width

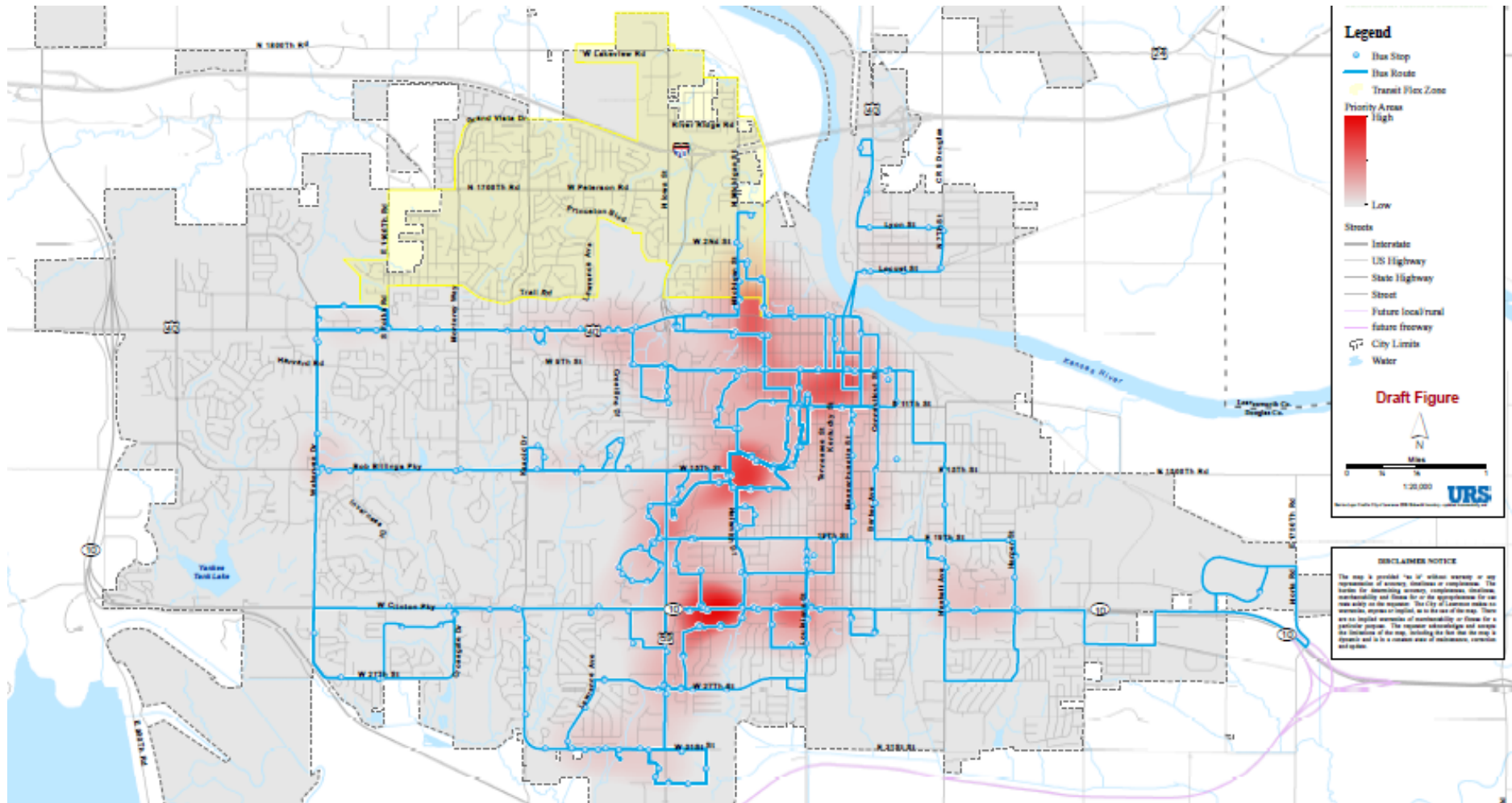
Connectivity

- Area Type
- Parks
- Universities
- Schools
- Commercial Areas
- Bicycle Facilities
- Transit Routes

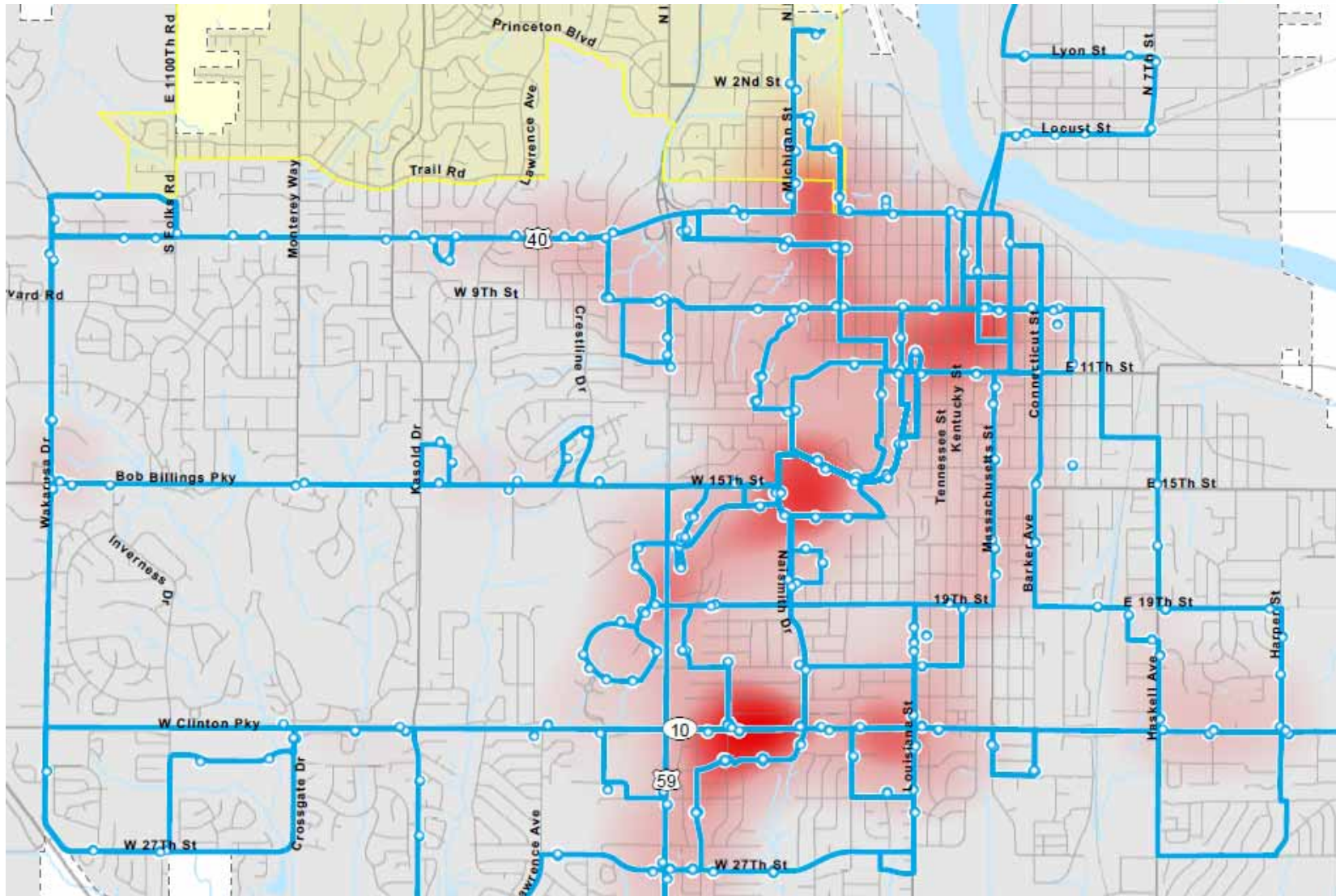
Demand

- Low to Moderate Income
- Persons with Disabilities
- Older Adults
- Low Auto Ownership

Heat Map



Heat Map



Example, 6th and Kentucky



Example, 6th and Kentucky



6th Street, Looking East

Example, 6th and Kentucky



6th Street, Looking west (at Kentucky)

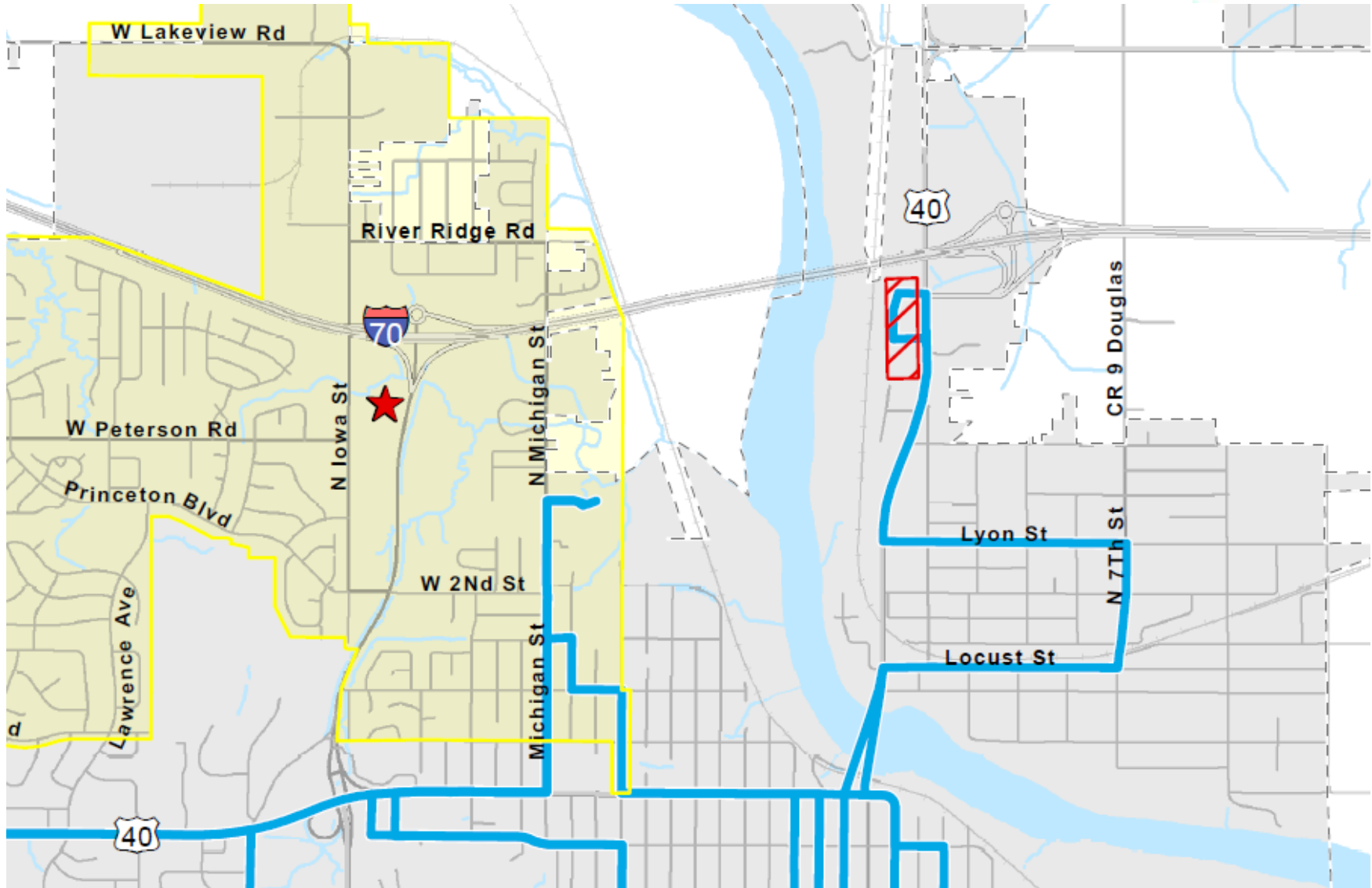
Example, 6th and Kentucky



Example, 6th and Kentucky



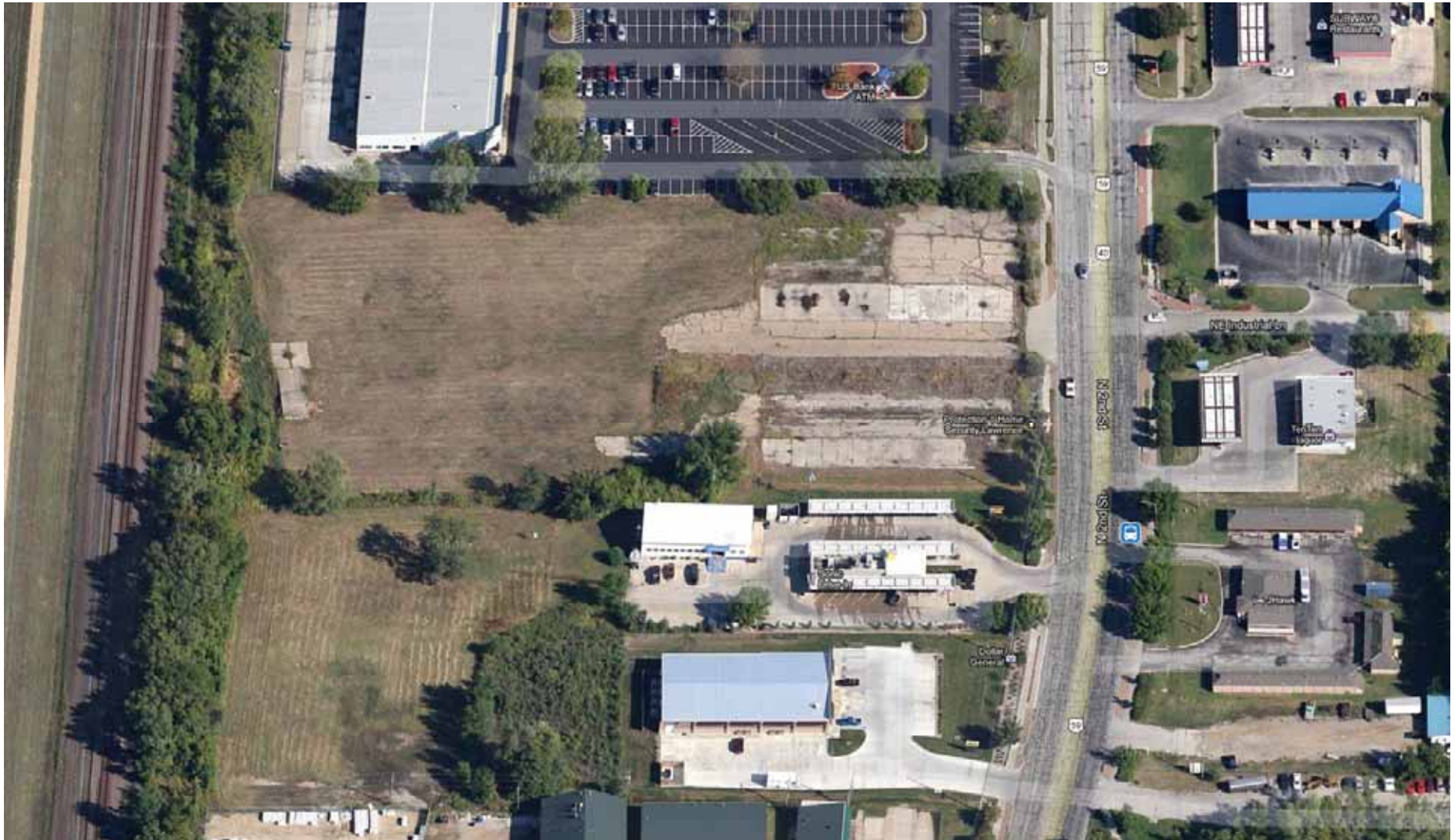
Study Coordination – Park & Ride



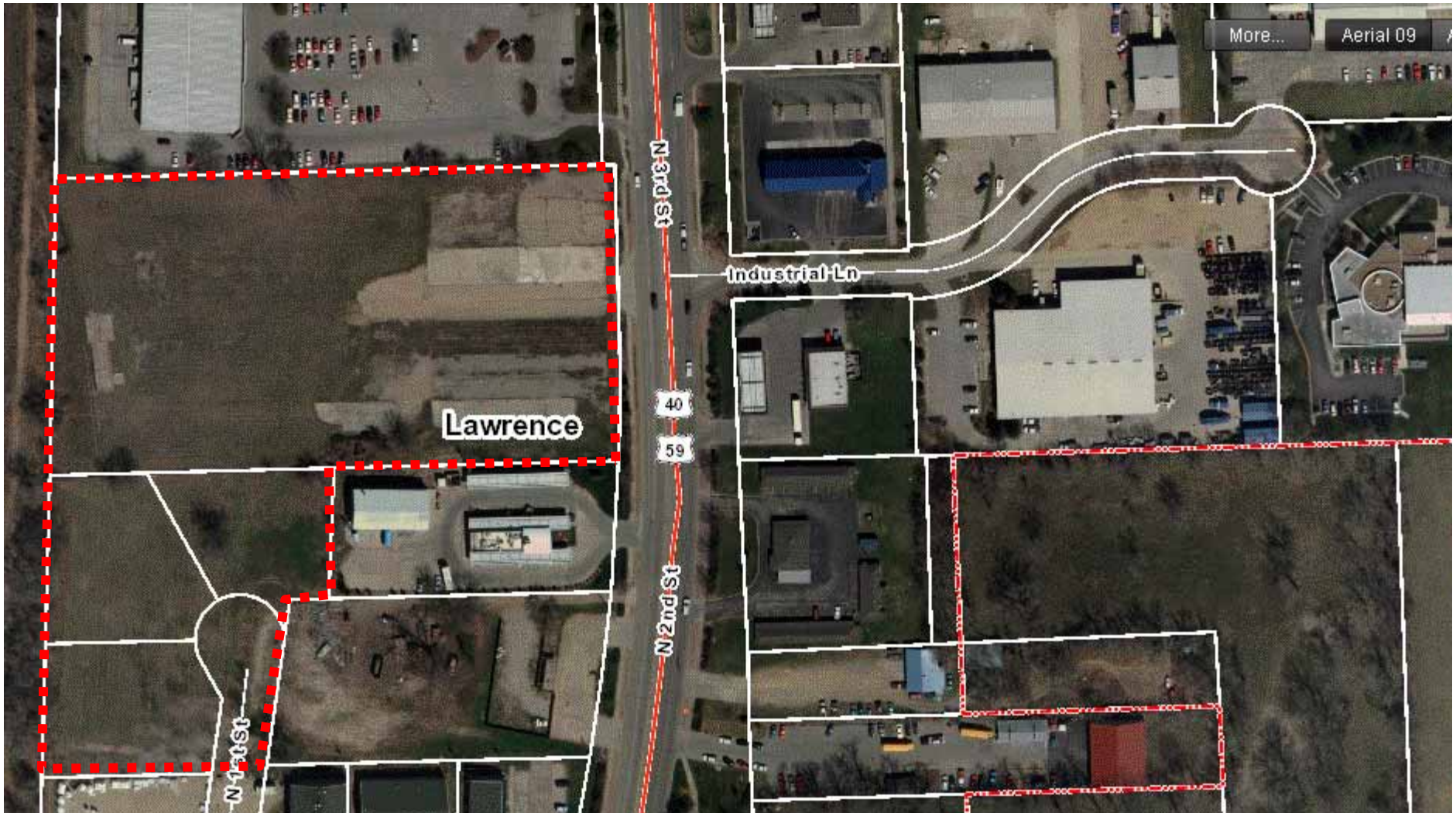
I-70 at 2nd



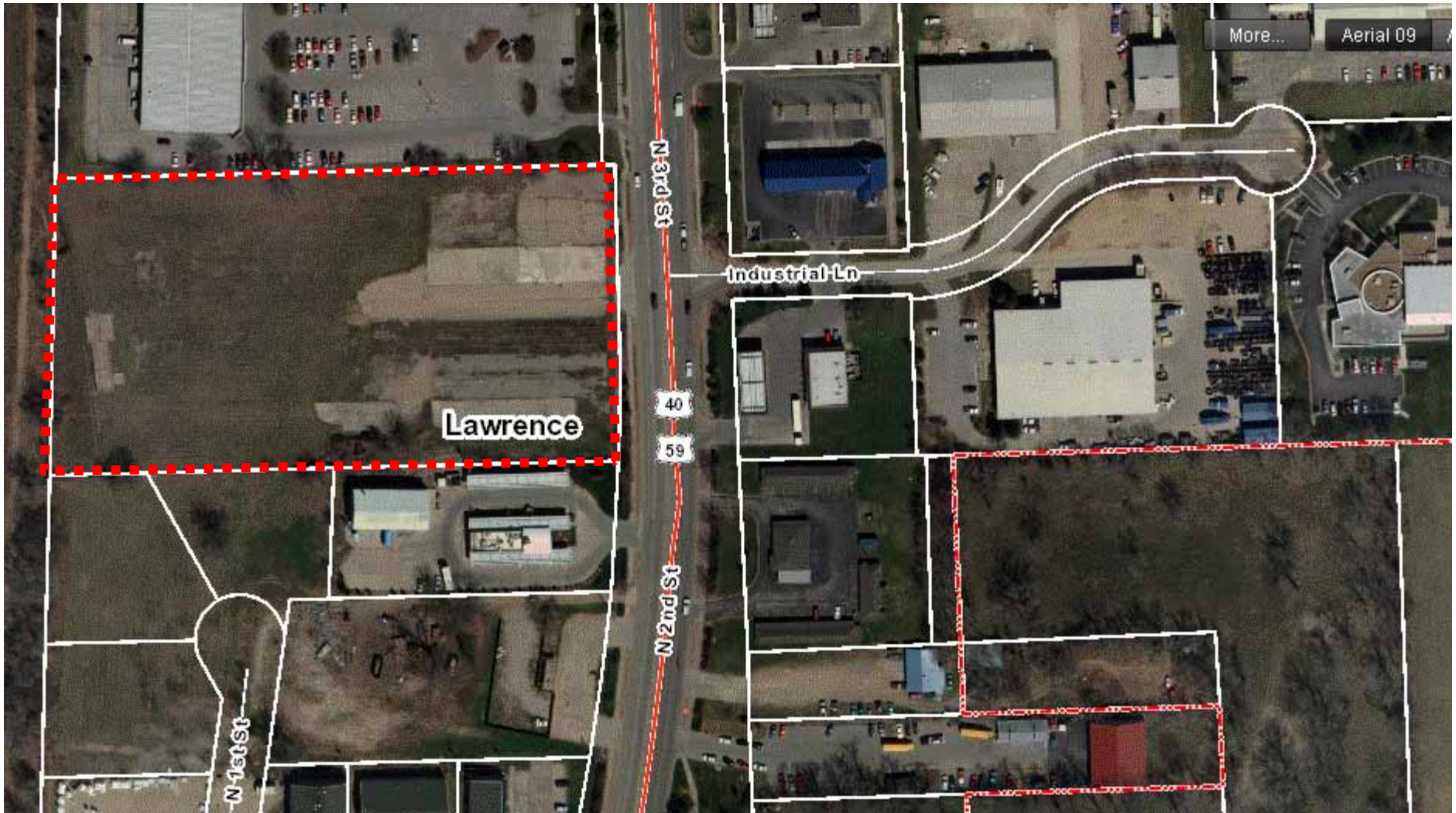
Example, Transit Hub/Park & Ride



Property Ownership (Park & Ride)



Property Ownership (Park & Ride)



Example (Study Coordination)



Coordination with Planned Improvements

T2040

Table 7.7 - Roadway Network Improvements – Fiscally Constrained

City/County	Project Route	Project Description	Project Location
Lawrence-DG County	I-70/Kansas Turnpike	Widen to 6 lanes	K-10 Lecompton Interchange E to DG/LV County Line
Lawrence-DG County	K-10 Highway	Safety and Resurfacing Project - with centerline rumble strips	I-70/KTA Interchange to US-59
Lawrence-DG County	K-10/15th Street/Bob Billings Parkway	New Interchange	K-10/15th Street/Bob Billings Parkway
Lawrence-DG County	K-10/South Lawrence Trafficway	New 4-lane freeway	US-59/Iowa E to 23rd Street/K-10 on 32nd Street
Lawrence	31st Street	New 2-lane road, grading, surfacing, multimodal improvements	Haskell to O'Connell
DG County	K-10 Highway	Safety Project - Cable Median Barrier	K-10 Highway East of Lawrence
Lawrence	23rd Street/K-10 Highway	Bridge Replacement over BNSF Abandoned Rail Line and Rail-Trail	K-10 Highway/ 23rd Street Bridge over BNSF Railroad
Lawrence	23rd Street/K-10	Access Point Consolidation	US 59 (Iowa St.) East to O'Connell Road
Lawrence	23rd & Iowa Intersection	Geometric/Intersection Improvements	23rd & Iowa Streets Intersection
DG County	US-59	Widen to 4-lane freeway, guardrails, lighting	US 59 Franklin-Douglas County Line N to 4-lane divided section at about N1000 Road/CR 458
DG County	US-59	Bridge Replacement	US 59 over West Fork of Taury Creek .14 mile N of
DG County	Old US-59 alignment	Turnback Project for KDOT Transfer to County-grading and pavement improvements	US 59 Franklin-Douglas County Line N to 4-lane divided section at about N1000 Road/CR 458
Lawrence	US-59/Iowa Street	Reconstruction and addition of sidewalks and shared use pathway	Yale Drive to Irving Hill Road including Intersection Area t 15th/ Bob Billings Parkway
DG County	US-56	Bridge Replacement	US 56 Taury Creek Drainage Bridge 1.95 miles east of US-59 & Taury Creek Bridge 2.7 miles east of US-59
DG County	US-56	Bridge Replacement	US 56 Taury Creek Drainage Bridge 1.95 miles east of US 59 & Taury Creek Bridge 2.7 miles east of US-59
Baldwin City	US-56	Center Turn Lane Improvement	US-56 at Baldwin City from Bull Pup Drive to E 1600
Baldwin City	US-56	Realignment/Geometric/Intersection Improvements	High Street and US 56 Intersection
Lawrence	6th Street/US-40 and Iowa Street/US-59 Intersection	Geometric/Intersection Improvements	6th & Iowa Streets Intersection
DG County	CR 1057/E 1900 Road	Bridge Replacement	Route 1057 Bridge over Wakarusa River at 1300 E 1900
Baldwin City	CR 1055/6th Street	Reconstruction and Improvements to Urban Road with Curbs and Gutters	US-56 N to CR 12
DG County	CR 1055	Reconstruction and addition of paved shoulders	Vinland (E 1700 Rd/N 700 Rd) to CR 458/N 1000 Road
DG County	CR 1055/E 1700 Road	Reconstruction and addition of paved shoulders	CR 12/N 400 Road to CR 460/N 700 Road
DG County	CR 442/N 1600 Road/Stull Road	Reconstruction of curves and addition of paved shoulders	SN/DG County Line E to CR 1023/E 250 Road
DG County	CR 458/N 1200 Road	Reconstruction and addition of paved shoulders	US-59 to E 1050 Road
DG County	CR 458	Reconstruction and Rehabilitation	E 800 Road to N 1175
Lawrence	19th Street	Reconstruction including center turn lane and bike lanes	Naismith Drive to Iowa/US-59
Lawrence	Kasold Drive	Reconstruction including multimodal facilities	Harvard Road to Bob Billings Parkway
Lawrence	Wakarusa Drive	Major Reconstruction Project with Pedestrian Facility Improvements	Bob Billings Parkway to Legends Drive
Baldwin City	6th Street in Baldwin City	Construct Left Turn Lane on 6th Street at US-56	Intersection of US-56 and 6th Street
Lawrence	9th Street	Signal, Intersection Improvement, Sidewalk	Emery Road to Michigan Street
DG County	CR 6	Safety Project - reconstruct and improve curve	N 1150 Road to E 550 Road
Lawrence	9th Street and Kentucky Intersection	Intersection Improvements including addition of turn lanes	9th and Kentucky Intersection

Stakeholder Outreach



T2040

Table 6.0 - Douglas County Public Transit and Human Services Transportation Providers

Operator	*Fleet Size	Service Hours	Days of Service	Service Area	Clientele
Bert Nash	1	9 am - 7 pm	Monday - Friday	Lawrence city limits	Elderly, Disabled
Cottonwood, Inc.	3 KDOT + 36 agency	7 am - 10 pm	Monday - Sunday	Douglas County	Disabled
Douglas County Senior Services, Inc.	4	8 am - 3 pm	Monday - Thursday Friday (medical only)	Lawrence city limits, DG	Elderly
Independence, Inc.	5	8 am - 5 pm	Monday - Friday	Douglas County, KC Metro	Elderly, Disabled, General Public
Johnson County Transit K-10 Connector	4	6 am - 11 pm	Monday - Friday	Johnson and Douglas Counties	General Public
KU on Wheels Fixed Route	43	7 am - 6 pm	Monday - Friday (when classes in session)	Lawrence city limits	General Public
KU on Wheels JayLift	5	7 am - 6 pm	Monday - Friday (when classes in session)	Lawrence city limits	**General Public
Lawrence - Douglas County Housing Authority Babcock Bus	1	8 am - 5 pm	Monday - Thursday	Lawrence city limits	Elderly, Disabled, Individuals receiving housing assistance
Lawrence - Douglas County Housing Authority Residential Services	2	9am - 5:30pm 10am - 7pm	Monday & Wednesday Tuesday & Thursday	Lawrence city limits	Individuals receiving housing assistance
Lawrence Transit Fixed Route	10	6 am - 8 pm	Monday - Saturday	Lawrence city limits	General Public
Lawrence Transit T-Lift	11	6 am - 8 pm	Monday - Saturday	Lawrence city limits	**General Public

* Fleet size is measured by the number of vehicles in maximum revenue hour service for 2010.

**Certification required.

Upcoming Tasks

- Finalize Evaluation Criteria
- Finalize Existing Conditions Analysis
- Develop Potential Improvements
- On-Going Steering Committee Input and Feedback