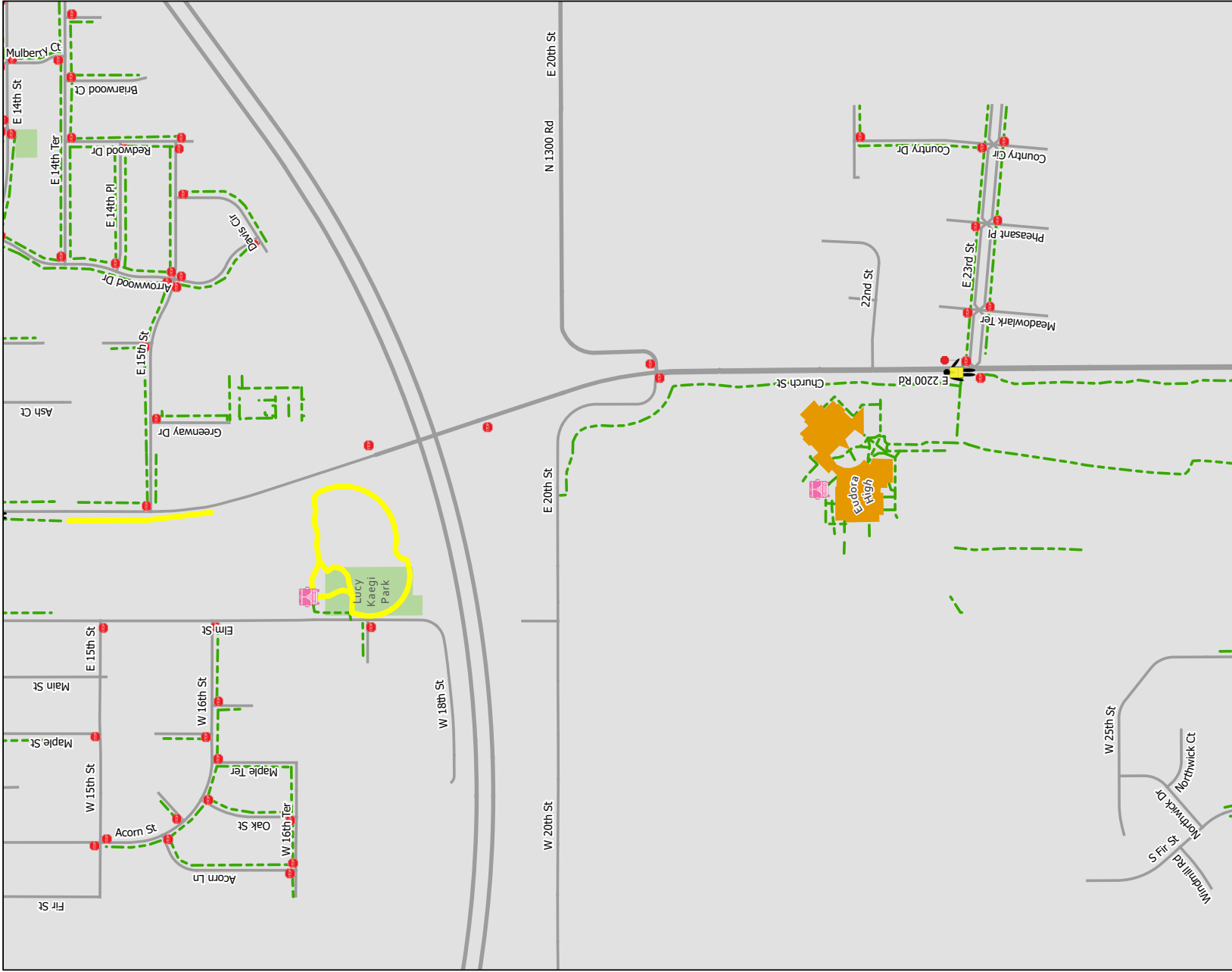
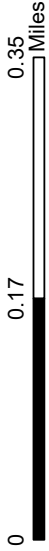




Eudora High School

For more information or to see all school maps visit: BeActiveSafeRoutes.com



Route Information



- Existing Sidewalk
- Pending Sidewalk

- Park
- Stop Signs

- School Crossing Guard

- School
- Shuttle Bus Stops

*Pending SRTS Sidewalk Projects are projects that have received funding and are planned for construction

Date Exported: 8/5/2021

Disclaimer: The map is provided "as is" without warranty or any representation of accuracy, timeliness or completeness. The burden for determining accuracy, completeness, timeliness, merchantability and fitness for or the appropriateness for use rests solely on the requester. The City of Lawrence makes no warranties, express or implied, as to the use of the map. There are no implied warranties of merchantability or fitness for a particular purpose. The requester acknowledges and accepts the limitations of the map, including the fact that the map is dynamic and is in a constant state of maintenance, correction and update.

SAFE ROUTES TO SCHOOL

WHAT IS ACTIVE TRANSPORTATION?

Using your body to get somewhere, including:

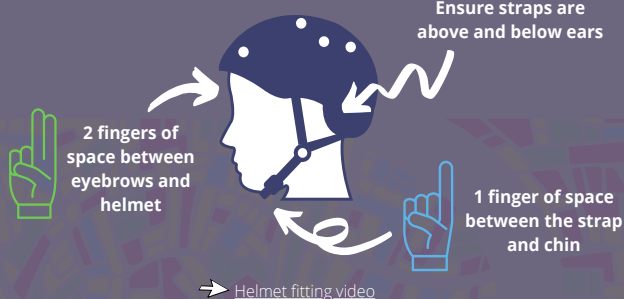
- Biking
- Walking
- Wheeling: Skating, skateboarding, using a scooter or wheelchair

WALKING, WHEELING, AND BIKING SAFETY TIPS



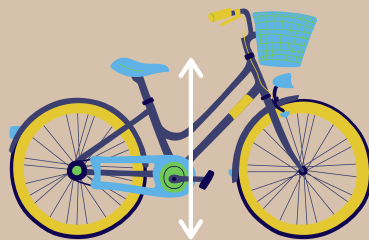
- If you're under 10, have an adult or someone over 10 with you
- Be seen! Wear bright, reflective clothing
- Be alert! Put away your phone and headphones
- Walk or wheel on the sidewalk when possible
- If there isn't a sidewalk, walk on the left side of the road so you can see cars coming toward you
- Bike on the right side of the road in the same direction as the cars when biking on the street
- Use bicycle lanes where available and if you're comfortable riding closer to traffic
- Bike on the sidewalk if you're not comfortable on the road. Make room for people walking. Always ring a bell or yell "on the left" to let others know you are approaching from behind.
- Use hand signals when biking so cars know if you're turning or stopping
- Watch for cars backing out of driveways, parking spots, and turning at intersections
- Lock your bike when you get to your destination

[Walking Safety Resource](#) - [Biking Safety Resource](#)



HOW TO CHOOSE THE RIGHT SIZE BIKE: MIDDLE SCHOOL THRU ADULT

CONSIDER:
SEAT HEIGHT + PERSON'S INSEAM + RIDING ABILITY



CHECK YOURSELF BEFORE YOU WRECK YOURSELF: BIKING CHECKLIST

- ✓ Helmet fits right and hair is pulled away from your face
- ✓ Wearing tennis shoes or other close-toed shoes. Shoelaces are tied.
- ✓ Reflectors and lights on the front and back of my bike when riding in the dark
- ✓ I've done my ABC's:
 - Air: Tires are full of air
 - Brakes: Brakes are working
 - Crank and chain: Spin the pedals and cranks to see if the chain drives the back wheel. Make sure the chain doesn't have rust. Check that the gear levers work.
 - Check: Seats and handlebars are tight and the bike is at a comfortable height. Do a short test ride to double check everything.
- ✓ My pants are rolled up so they don't get caught in the bike chain

HOW TO CROSS THE STREET



- Look for a cross walk, crossing guard, or traffic light. These are the safest places to cross the street.
- Stop before crossing the street, entering a road, or turning
- Look up and make sure drivers see you
- Look left, right, left, behind, and in front of you for cars or other people
- After traffic has stopped, walk confidently across the street, make eye contact with drivers, and wave to thank them for stopping



SEASON READINESS CHECKLIST:

- ✓ Wear clothes with the weather in mind
- ✓ Wear layers to prevent heat loss. Put away layers as you warm up.
- ✓ Choose shoes that keep your feet dry.
- ✓ Wear a jacket that deflects wind, rain, or snow
- ✓ Put a shower cap or bag over your bike seat to keep it dry when you're not riding
- ✓ Ask for hats, gloves, and other winter wear at your school student services office



BENEFITS OF BIKING, WALKING, OR WHEELING TO SCHOOL

- Stronger bones, muscles and joints
- Counts toward the recommended 1 hour of daily physical activity
- Helps with staying focused in class
- Kids develop responsibility and independence
- It's a fun way to make friends
- Cleaner air because there are fewer cars on the road and near schools
- Families save money on gas

Direct questions to
saferoutes@ldchealth.org

