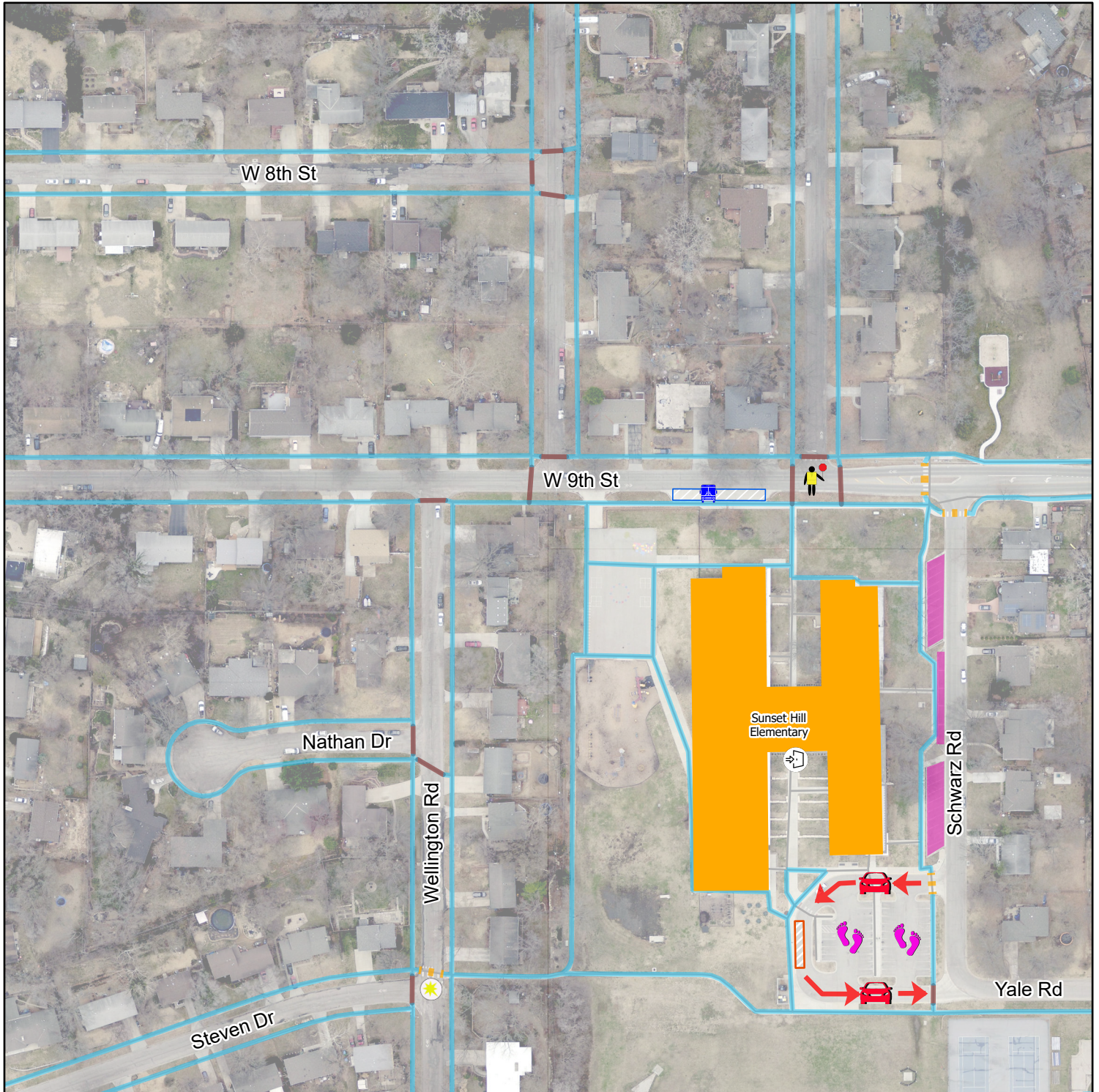




Sunset Hill Elementary Traffic Map

Exported 7/29/2022

0 0.05 0.1 Miles



- | | | | |
|------------------------------------|----------------------------|----------------------------|---------------------------------|
| 2022 - 23 Crossing Guard Locations | School | Parent Drop off and Pickup | Parent Drop off and Pickup Zone |
| Rectangular Rapid Flash Beacon | Parent Drop Off and Pickup | Park and Walk | Staff Parking |
| Main Entrance | Bus Stop | Bus Stop | |

Disclaimer: The map is provided "as is" without warranty or any representation of accuracy, timeliness or completeness. The burden for determining accuracy, completeness, timeliness, merchantability and fitness for or the appropriateness for use rests solely on the requester. The City of Lawrence makes no warranties, express or implied, as to the use of the map. There are no implied warranties of merchantability or fitness for a particular purpose. The requester acknowledges and accepts the limitations of the map, including the fact that the map is dynamic and is in a constant state of maintenance, correction and update.