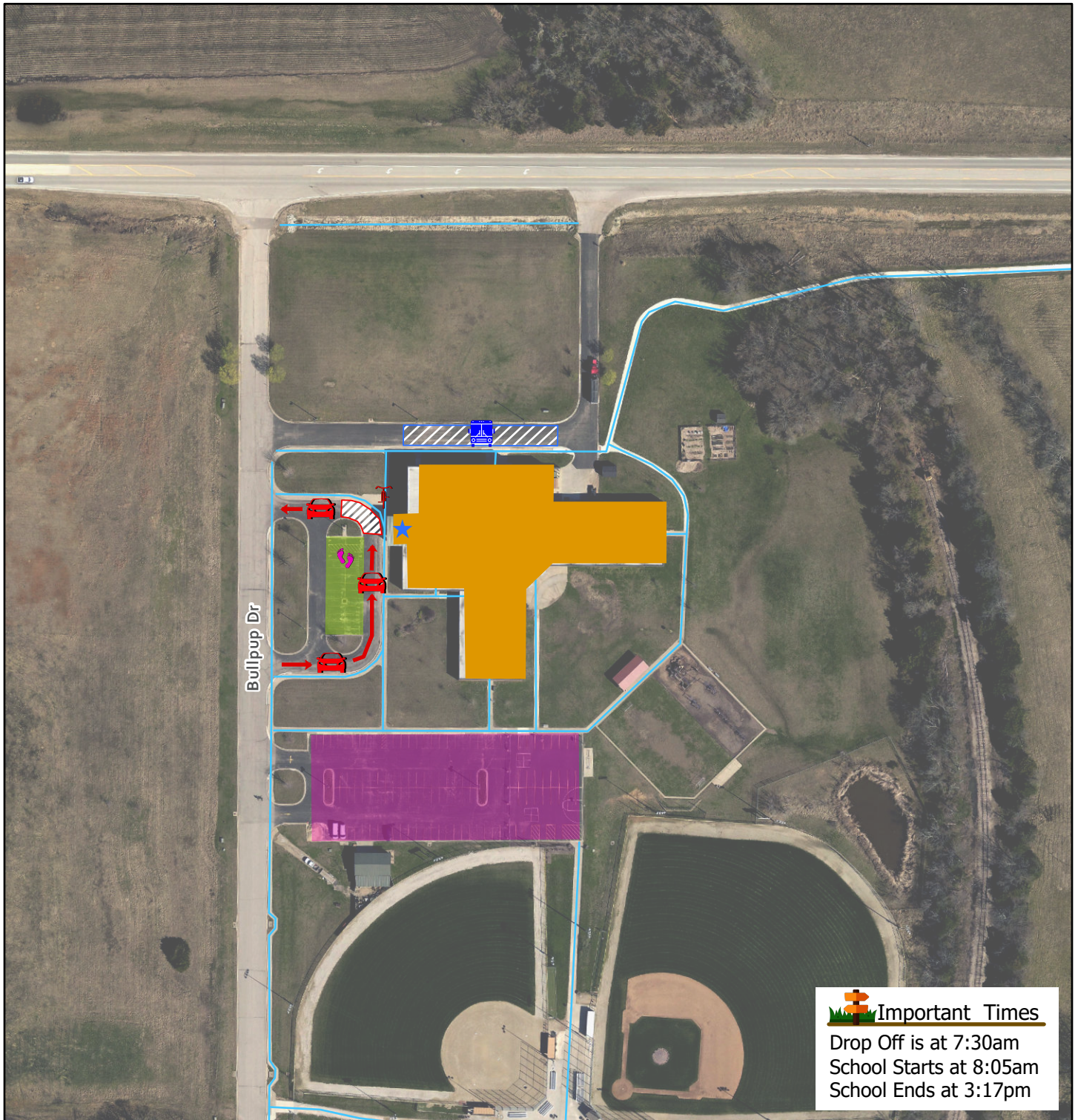
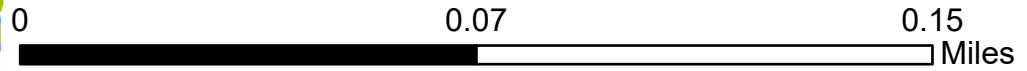




Baldwin City Elementary School Intermediate Center Traffic Map

Date: 8/23/2021



Important Times
 Drop Off is at 7:30am
 School Starts at 8:05am
 School Ends at 3:17pm

- | | | |
|------------------------------|-------------------------------|-----------------------------------|
| ★ School Entrances | 🚲 Bike Rack | 🚌 Bus Stop |
| 🛑 All Way Stop | 👣 Park and Walk | 🚗 Parent Drop Off and Pickup Zone |
| 🚗 Parent Drop Off and Pickup | 📶 Drop Off | 🏫 Schools |
| 🚌 Bus | 🅑🅓 Staff Parking | 🚶 Existing Sidewalk |
| | 🅑🅓 Parent and Visitor Parking | |

Disclaimer: The map is provided "as is" without warranty or any representation of accuracy, timeliness or completeness. The burden for determining accuracy, completeness, timeliness, merchantability and fitness for or the appropriateness for use rests solely on the requester. The City of Lawrence makes no warranties, express or implied, as to the use of the map. There are no implied warranties of merchantability or fitness for a particular purpose. The requester acknowledges and accepts the limitations of the map, including the fact that the map is dynamic and is in a constant state of maintenance, correction and update.