



19th Street Neighborhoods Coalition



Limit Traffic on All of 19th St. No Widening east of Harper

Barker Neighborhood Association
Brook Creek Neighborhood Association
Schwegler Neighborhood Association
University Place Neighborhood contingent of 30

19th St. Character is Residential

From Harper St. eastward to its terminus, 19th St. serves 212 homes, a salvage yard, the animal shelter, and a church.

Right-of-way is residential width of only 65 feet.

The pavement is 22 feet residential width, crown-and-ditch contour, asphalt material.

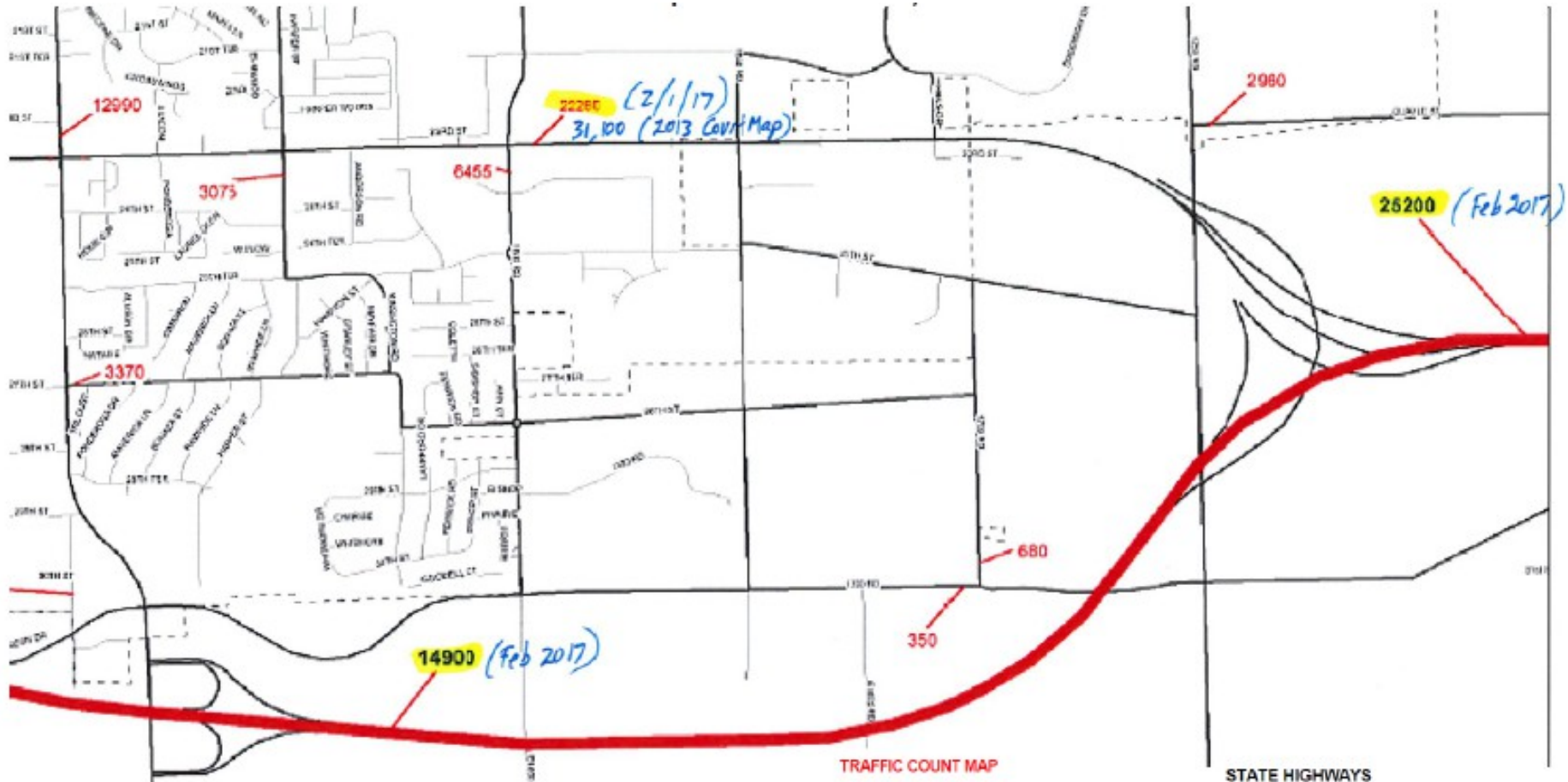
Daily vehicle trips are less than 1000.

These conditions don't warrant widening it to 47 feet, for \$3.625 million.



Use the New Capacity on 23rd St.

- Since the K-10 SLT opened, KDOT traffic counts on 23rd St. are down by 8820 at O'Connell Rd.



Blue notations by KDOT Staff

TRAFFIC COUNT MAP
OF
LAWRENCE
DOUGLAS COUNTY, KANSAS

STATE HIGHWAYS
ANNUAL AVERAGE DAILY TRAFFIC
YEAR ENDING DECEMBER 31, 2016

CITY STREETS
24-HOUR TRAFFIC COUNTS OBTAINED SEPTEMBER,
OCTOBER 2016, JANUARY & FEBRUARY 2017

2016 Base count map - counts taken in Sept/Oct 2016, Jan/Feb 2017

East Traffic Generator: 47 Foot Wide 19th St. to O'Connell

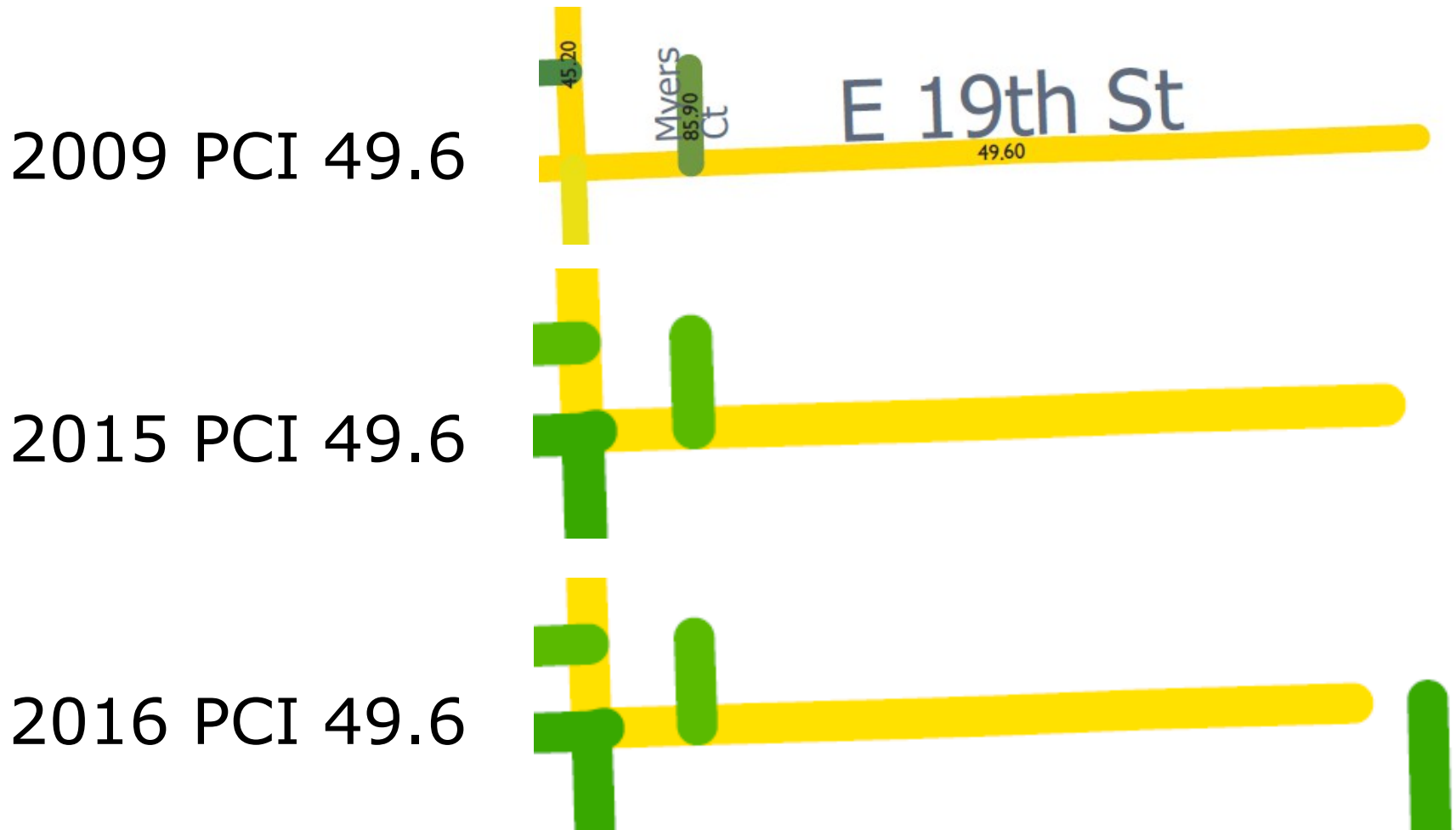


The City claims widening is justified for these reasons:

- For a third employee access to Venture Business Park
- For water lines, drainage, sidewalks, and a bikeway
- Low PCI prohibits repaving, claiming total rebuild needed
- For transit service
- For emergency vehicle access

Wider 19th St. to O'Connell Unjustified

- Public Works claims the East 19th St. Pavement Condition Index (PCI) is 24.8 (out of 100).
- This abrupt change after 2016 seems contrived.



Bullene Ave., Ward to 19th St.

2017 PCI of 47.15

Light industrial use

Semi-truck traffic

2018 Street Maintenance

Program

Micro-surfacing



Solution To Address All Aspects



- Mill and overlay 19th St. at 22 foot wide pavement.
- Remove and repair sub-grade in the few needed spots.
- Install new waterline, sidewalk, shared use path.
- Install barrier gate at O'Connell, opened by transponders on emergency and transit vehicles.
- Install \$1 million roundabout at 23rd and Franklin Rd.
- Save \$1 million overall.

Options to a 19th St. Complete Rebuild

- Waterlines are routinely upgraded without rebuilding streets.
- A 6 foot sidewalk and 10 foot shared use path would be welcomed.
- There is a historical M.O.U. to retain drainage ditches as higher performing than storm sewers.
- Traffic calming reduces speeds but NOT numbers.

- We propose a gate at O'Connell, operable by emergency and transit vehicles only.

