
1. Call Meeting to Order and Introductions

(Cory Davis – L-DC MPO Chair)

2. Action Item: Approval of Minutes from March 16 , 2017 (attached)

(Cory Davis – L-DC MPO Chair)

3. Discussion Item: Old Business and Correspondence

(Jessica Mortinger – MPO Staff)

a. Project Updates Memo (attached)

- Transportation 2040
- 2017 Special Studies

b. Recent TAC meeting minutes

- TAC – March 7 & 20 Meeting – approved and posted online at www.lawrenceks.org/boards/technical-advisory-committee

4. Action Item: Approve Corridors for Critical Rural Freight Corridors (CRFC) and Critical Urban Freight Corridors (CUFC) Designation to Submit to KDOT (attached)

MPO Staff will present the recommended corridor identified by TAC.

5. Other Business

6. Public Comments

This item is to allow brief public comments on items not listed specifically on the agenda. Comments from each individual or organization will be limited to five minutes.

7. Adjournment

Next Meeting: The MPO Policy Board will meet next for its regularly scheduled meeting on May 18, 2017 or another date set by the MPO if needed.

Special Accommodations: Please notify the Lawrence-Douglas County Metropolitan Planning Organization (L-DC MPO) at (785) 832-3150 at least 72 hours in advance if you require special accommodations to attend this meeting (i.e., qualified interpreter, large print, reader, hearing assistance). We will make every effort to meet reasonable requests.

The L-DC MPO programs do not discriminate against anyone on the basis of race, color, national origin, sex, age, or handicap/disability, according to Title VI of the Civil Rights Act of 1964. For more information or to obtain a Title VI Complaint Form, see www.lawrenceks.org/mpo/title6 or call (785) 832-3150.

Lawrence-Douglas County Metropolitan Planning Organization (MPO) Policy Board Meeting Minutes- Thursday, March 16, 2017

Attendance:

Organization	Name	Present
Voting Members		
Lawrence City Commission	Lisa Larsen	
Lawrence City Commission	Matthew Herbert	X
Douglas County Commission	Michelle Derusseau	X
L-DC Metropolitan Planning Commission	Eric Struckhoff	X
L-DC Metropolitan Planning Commission	Bryan Culver	X
City of Baldwin City	Christi Darnell	
Kansas Department of Transportation	Cory Davis	X
Non-Voting Members		
Federal Highway Administration	Paul Foundoukis	
Federal Transit Administration	Daniel Nguyen	
University of Kansas	Paul Graves	
City of Leocompton	Jimmy Wilkins	
City of Eudora	Tim Reazin	
Staff		
Lawrence - Douglas County MPO	Jessica Mortinger, AICP	X
Lawrence - Douglas County MPO	Ashley Myers, AICP	X
Lawrence-Douglas County Planning & Development Services Dept.	Scott McCullough, AICP	X
Others		
Lawrence Transit	Bob Nugent	X

1. Call Meeting to Order and Introductions

Cory Davis called the meeting to order at 3:01. Introductions were made.

2. Action Item: Approval of Minutes from February 23, 2017 (attached)

Corey Davis presented the minutes and asked if there was any discussion. There was none. Approval of the minutes was moved by Bryan Culver, seconded by Michelle Derusseau and passed unanimously, 5-0

3. Discussion Item: Old Business and Correspondence

Jessica Mortinger presented the old business, correspondence and TAC minutes and asked MPO members if they had any questions. Bryan Culver asked about the planned TAC freight discussion meeting next week. Ms. Mortinger explained that the TAC needed to have a discussion about what routes/projects to propose to be included in the Kansas Critical Freight Corridors. KDOT has funding to put towards projects identified on this network. The meeting will provide staff the time to develop materials to be voted on at the regularly scheduled TAC/MPO April meetings. We needed to post an agenda in case we have a quorum of voting members attend so we don't violate KOMA rules.

4. Action Item: Review and Approve the Lawrence Bicycle Parking and Amenities Policy Review with Citywide and Downtown Recommendations

Jessica Mortinger presented the MPO's work with the BAC on updating the Lawrence Bicycle Parking and Amenities Policy Review with Citywide and Downtown Recommendations. She reviewed each of the recommendations. Ms. Mortinger noted that the work of inventorying

downtown parking occupancy will be a task of the MPO to track the demand of bicycle parking following the LiveWell grant for Bicycle Parking. Staff discussed recent developments and their bicycle parking amenities and the proposals for additional Bicycle Corrals request that the MPO staff that had public hearings conducted at the Transportation Commission and will go before the Lawrence City Commission on March 21st.

Eric Struckhoff said he liked the density/demand map. It is a good approach to solving bike parking issues - if there is red on the map, let's put bike parking there. As a result, the after map no longer has the red on the map.

Corey Davis asked where this work originated. Ms. Mortinger said it came from the Lawrence-Douglas County Bicycle Advisory Committee, which no longer exists. This is the third version of the report. The Lawrence City Commission accepted it on December 20, 2016. The MPO is committed to report back to the Transportation Commission on bike parking policy and the bike corral pilot project in late 2017.

Matthew Herbert asked about bike parking ovals at light poles. Ms. Mortinger said the light poles along Massachusetts St. are decorative and there are no parking ovals that will fit around the light poles that would accommodate u-locks, not to mention that City Code prohibits bicycles from parking on light poles. Meter ovals are nice, but they are not the ideal type of bike parking, because they often do not allow the bicycle to be entirely supported and it is challenging to lock bicycles on both sides of the oval and maintain vehicle parking access. The Association of Pedestrian and Bicycle Professionals (APBP) suggest installing bike racks with 2 locations to secure bikes, so inverted U racks are better. There is also the issue about sidewalk space being a premium with increased sidewalk dining downtown. Parks and Recreation staff (who maintains the downtown streetscape) and MPO staff agree that it makes more sense to have bike parking in the street as bikes are not supposed to be ridden on the sidewalk downtown. Mr. Struckhoff said have the bike parking on the street gives validity to biking as form of transportation.

A motion to approve the Lawrence Bicycle Parking and Amenities Policy Review with Citywide and Downtown Recommendations report was made by Eric Struckhoff, seconded by Matthew Herbert and passed unanimously, 5-0.

5. Action Item: Review and Approve the amended TAC Bylaws (attached)

Jessica Mortinger presented the amended TAC Bylaws that remove non-voting members from the Lawrence-Douglas County Bicycle Advisory Committee (BAC) and the Lawrence Public Transit Advisory Committee (PTAC). The BAC was dissolved December 31st. Further PTAC is represented by Bob Nugent and Danny Kaiser. TAC meetings are open to the public, so if members of PTAC or any MPO committees want to attend they are welcome to do so.

A motion to approve the amended TAC Bylaws was made by Matthew Herbert, seconded by Eric Struckhoff and passed unanimously, 5-0.

6. Action Item: Review and Approve of the Transit Comprehensive Operations

Analysis (COA) - <http://assets.lawrenceks.org/assets/mpo/COA/COAOverview2016.pdf>

Bob Nugent presented the Transit Comprehensive Operations Analysis. Mr. Nugent stated the study analyzed each route and their respective needs. The data will be utilized if the service needs to be redesigned to accommodate a transit center. It will also provide justification for which stops receive amenities, like shelters or benches.

Matthew Herbert asked what the loss of revenue would be if we went fare free. Mr. Nugent said about \$400,000, but that there would be additional expenses to operate fare free

because with the free service, more busses would have to be used than the current configuration. For example, two services that went fare free are talking about putting a fare back into their system.

Bryan Culver said the assumption is that the transit center analysis will use this data. Mr. Nugent said yes. Last time we did a transit center analysis we didn't have this data, so we looked at the mean center of the city on a map which equated to around campus. Now we have the data to know where rides are actually happening.

A motion was made to approve the Transit Comprehensive Operations Analysis (COA) by Bryan Culver, seconded by Michelle Derusseau and passed unanimously, 5-0.

7. Action Item: Review and Approve of the Lawrence Bike Share Feasibility Study

- <http://assets.lawrenceks.org/assets/mpo/bicycle/FinalBikeSharePresentation.pdf>

Ashley Myers presented the Lawrence Bike Share Feasibility Study. The study found that a Bike Share system would be feasible in Lawrence. Eric Struckhoff said the smart bike system sounds like a good system. He asked about people not wanting to ride up hills. Jessica Mortinger said there can be incentives, like the ride is free if you go up hill and there is the possibility of electric bikes, which would help with the topography issue. Bryan Culver said it makes sense to start at KU. Ms. Mortinger agreed saying this is especially true as KU Parking and Transit is transitioning to an assigned parking system. Cory Davis asked about the next step. Ms. Mortinger said the City/County sustainability office, KU Bicycle Advisory Committee, and KU Parking and Transit are going to be forming an implementation committee. Involving students will be important will identify students that are interested as part of the upcoming Student Senate election.

A motion was made approve the Lawrence Bike Share Feasibility Study by Eric Struckhoff, seconded by Bryan Culver and passed unanimously, 5 -0.

8. Other Business

Jessica Mortinger said the MPO purchased the Association of Pedestrian and Bicycle Professionals webinar series. She said anyone is welcome to attend the webinars. They are held on the third Wednesday of the month at 2:00 pm.

9. Public Comments

There were no public comments.

10. Adjournment

The meeting adjourned at 4:03 pm. The MPO Policy Board will meet next for its regularly scheduled meeting on April 20, 2017 or another date set by the MPO if needed.



Memorandum

TO: L-DC MPO Members
FROM: Jessica Mortinger, Senior Transportation Planner
Ashley Myers, Transportation Planner
CC: Scott McCullough, Director of Planning & Development Services
Date: April 13, 2017
Re: MPO Activity Updates

The following list is a summary of selected projects and a brief description of recent MPO staff work since the last MPO meeting held on March 16, 2017.

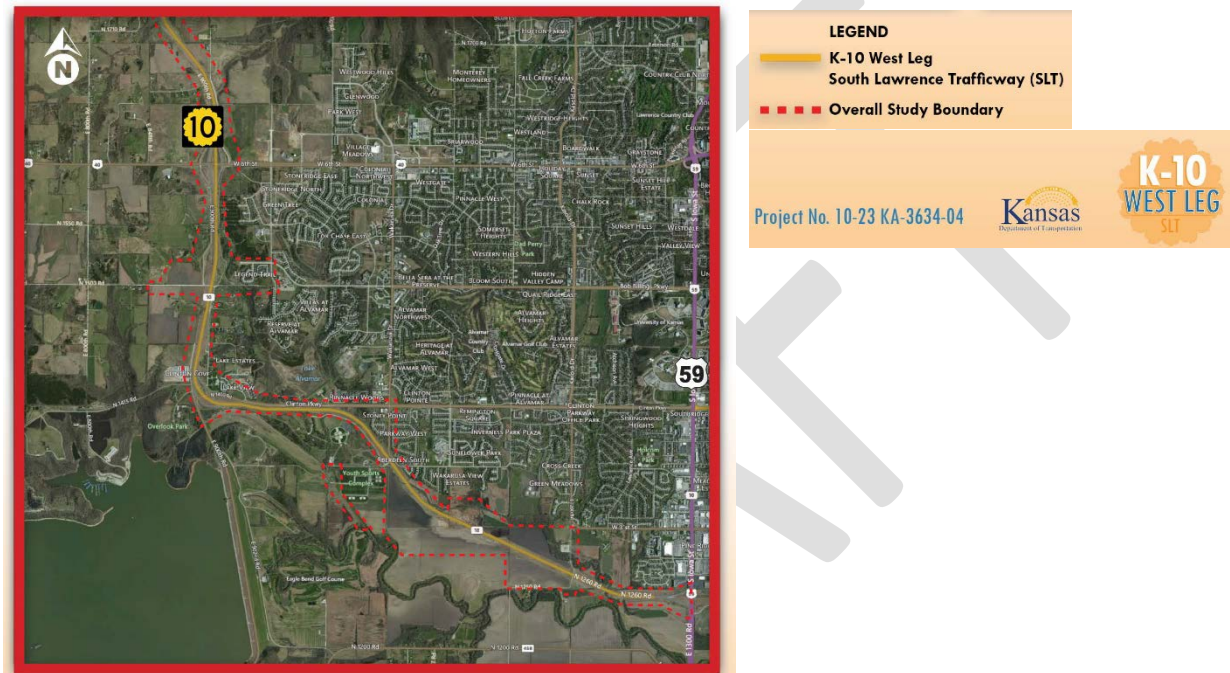
Transportation 2040 – Two open houses were held in Lawrence, one in Baldwin City, and one in Eudora. MPO staff has also been tabling at various locations to promote the survey which will close on April 30th. A second round of public engagement will occur in the fall. The updated plan is expected to be approved by March 2018. Visit www.lawrenceks.org/mpo/t2040-update for more information.

2017 Special Studies – We are currently in the process to hire consultants to perform three studies – Lawrence Loop Alignment Study, Safety Analysis and Countermeasure Identification, Transit Center Location Analysis.

TAC Proposed Critical Urban/Rural Freight Corridors for Douglas County

- K-10 - US-59 to I-70**
 8.8 centerline miles
 (West leg of K-10-Capacity/Interchange access/Connection at I-70)

Map of Segment as presented for the West Leg Study



Serves as a connection between K-10/US-59 and I-70. K-10 is planned to have 5 interchanges with access to the arterials street network in Lawrence. This section has two connections to Lawrence truck routes. Borders the Urbanized area.

The Lawrence Douglas County region has not applied for FASTLANE grant for K-10.

K-10 West Leg Traffic Counts			
Location	Average Annual Daily Traffic (AADT)	Average Annual Daily Truck Traffic (AADTT)	% Truck Traffic
West of US 59/Iowa St	8,100	485	6.0%
West of Kasold Dr	6,100	425	7.0%
North of Bob Billings Parkway	9,920	610	6.1%
North of US 40/6th St	12,600	710	5.6%
Average	9,180	558	6.2%

Source: 2016 KDOT Traffic Flow Map

Note: AADTT includes all heavy commercial vehicles

