

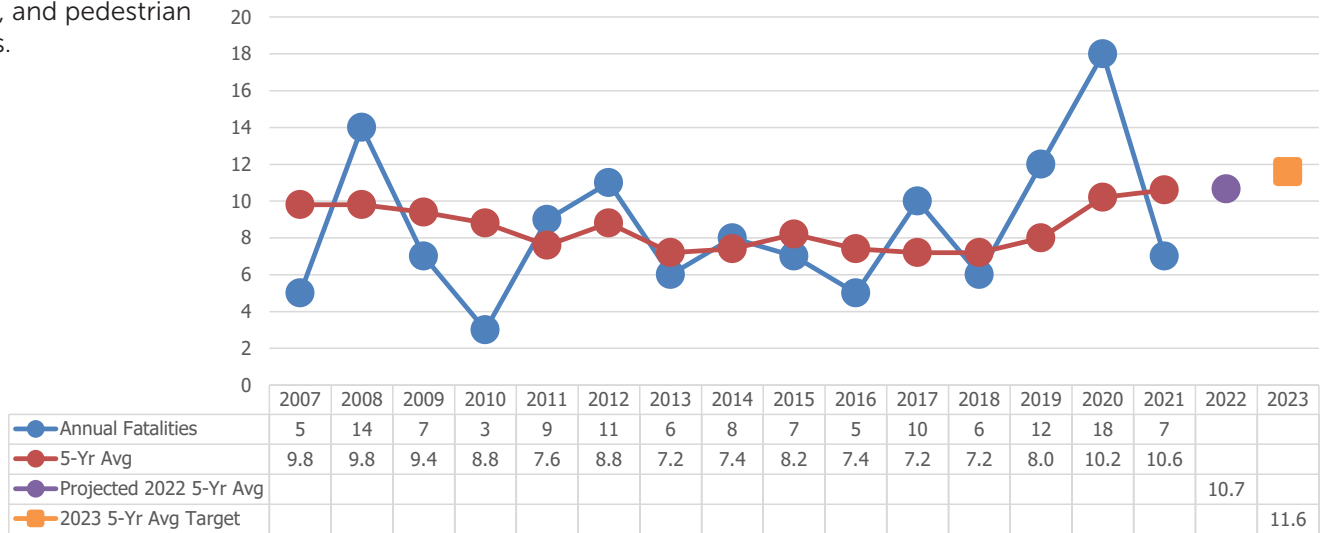
Safety

Performance Measure 9: Number of Fatalities (all public roads)

This measure includes the total number of persons suffering fatal injuries in crashes during a calendar year using five-year rolling averages. Law enforcement provides crash information to the Kansas Department of Transportation (KDOT) for compiling and KDOT dispenses the data to the MPO. The MPO desires improved safety beyond the target; however, the target reflects rolling averages with projections based on historical trends. Rolling average information is shown for the entity which maintains the road the crash occurred on. View the road maintenance map on page 7. The total Douglas County rolling average for the five year period is the official measure and MPO target.

Rolling Averages	Total Douglas County	Crash on Road Maintained by	2012-2016	2013-2017	2014-2018	2015-2019	2016-2020	2017-2021
2007-2011	7.6	City of Lawrence	1.6	1.8	1.2	1.4	2.2	2.4
2008-2012	8.8	Douglas County	2.4	2.0	2.2	2.0	2.4	2.2
2009-2013	7.2	Kansas Department of Transportation	1.2	1.2	1.4	2.0	3.8	4.4
2010-2014	7.4	Kansas Turnpike Authority	0.8	0.6	0.8	0.8	0.6	0.6
2011-2015	8.2	Private (Unincorporated)	0.2	0.0	0.0	0.0	0.0	0.0
2012-2016	7.4	Townships	1.0	1.4	1.4	1.6	1.0	0.8
2013-2017	7.2	Total Mapped*	7.2	7.0	7.0	7.8	10.0	10.4
2014-2018	7.2	KDOT Douglas County Traffic Fatalities	7.4	7.2	7.2	8.0	10.2	11.5
2015-2019	8.0	<small>*Some crashes don't have mappable data</small>						
2016-2020	10.2							
2017-2021	11.5							

Note: Includes vehicle, bicycle, and pedestrian crashes.



Source: Kansas Department of Transportation

Anticipated Update: Yearly

Target Set by MPO Policy Board: [November 17, 2022](#)

2023 Target
11.6

Safety

Performance Measure 10:

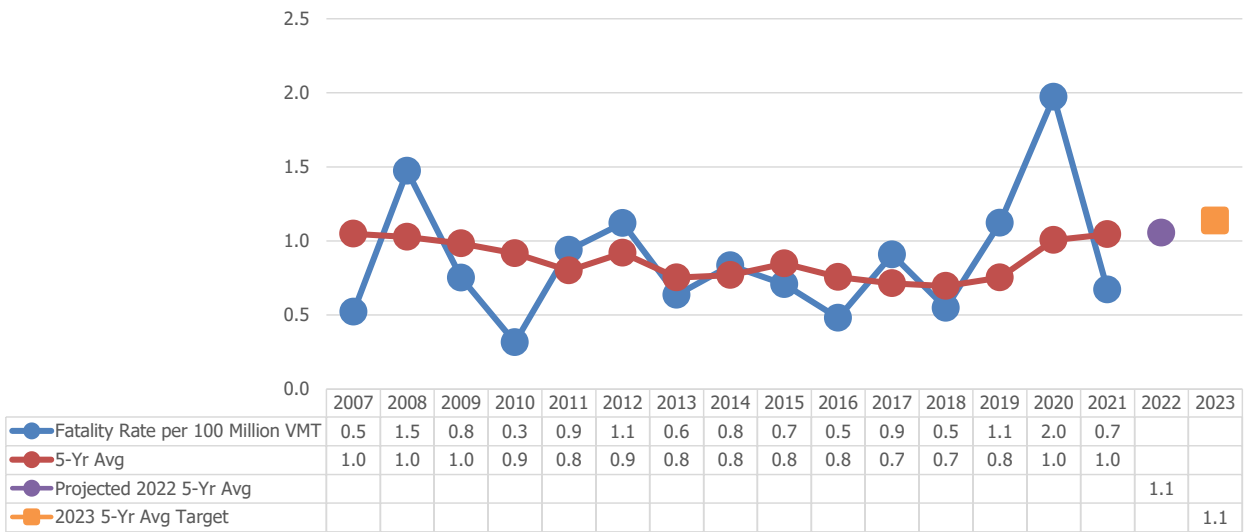
Rate of Fatalities per 100 million VMT (all public roads)

This measure includes the ratio of total number of fatalities to the number of vehicle miles traveled (VMT, in 100 Million VMT) in a calendar year using five-year rolling averages. Law enforcement provides crash information to the Kansas Department of Transportation (KDOT) for compiling and KDOT dispenses the data to the MPO. The MPO desires improved safety beyond the target; however, the target reflects rolling averages with projections based on historical trends. The total Douglas County rolling average for the five year period is the official measure and MPO target.

Rolling Averages	Total Douglas County
2007-2011	0.8
2008-2012	0.9
2009-2013	0.8
2010-2014	0.8
2011-2015	0.8
2012-2016	0.8
2013-2017	0.7
2014-2018	0.7
2015-2019	0.8
2016-2020	1.0
2017-2021	1.1

Fatality crashes are shown by the entity who owns and maintains the road the crash occurred on in Performance Measure 9 (the prior page). However, the Vehicle Miles Traveled (VMT) information provided by KDOT is not split into the specific entities crashes occurred on (e.g. township roads). Thus, only the total Douglas County rate is shown here. To see the per entity crashes go to Performance Measure 9.

Note: Includes vehicle, bicycle, and pedestrian crashes.



Source: Kansas Department of Transportation

Anticipated Update: Yearly

Target Set by MPO Policy Board: [November 17, 2022](#)

2023 Target
1.1

Safety

Performance Measure 11:

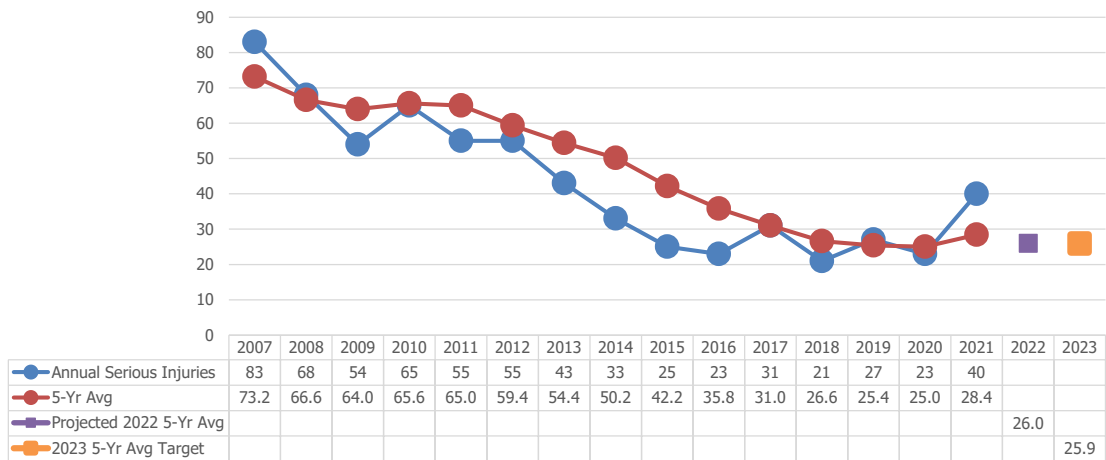
Number of Serious Injuries (all public roads)

This measure includes the total number of persons suffering at least one serious injury in a crash during a calendar year using five-year rolling averages. Law enforcement provides crash information to the Kansas Department of Transportation (KDOT) for compiling and KDOT dispenses the data to the MPO. KDOT changed to the national definition of serious injuries on January 1, 2019 (see the last page for the definitions). The MPO desires improved safety beyond the target; however, the target reflects rolling averages with projections based on historical trends. Rolling average information is shown for the entity which maintains the road the crash occurred on. View the road maintenance map on page 7. The total Douglas County rolling average for the five year period is the official measure and MPO target.

Rolling Averages	Total Douglas County	Crash on Road Maintained by	2012-2016	2013-2017	2014-2018	2015-2019	2016-2020	2017-2021
2007-2011	65.0	Army Corps of Engineers	0.2	0.0	0.0	0.0	0.0	0.0
2008-2012	59.4	City of Baldwin City	0.2	0.0	0.0	0.0	0.0	0.4
2009-2013	54.4	City of Eudora	0.2	0.0	0.0	0.0	0.0	0.0
2010-2014	50.2	City of Lawrence	18.2	16.4	14.0	12.2	12.0	10.8
2011-2015	42.2	Douglas County	4.2	3.6	3.4	3.8	3.2	4.4
2012-2016	35.8	Kansas Department of Transportation	5.0	3.6	2.8	3.6	4.4	6.4
2013-2017	31.0	KS Dept of Wildlife, Parks, & Tourism	0.0	0.0	0.0	0.2	0.2	0.2
2014-2018	26.6	Kansas Turnpike Authority	4.6	4.4	3.6	3.2	2.6	2.8
2015-2019	25.4	Private (Lawrence)	0.4	0.2	0.2	0.2	0.2	0.2
2016-2020	25.0	University of Kansas	1.0	0.6	0.4	0.4	0.4	0.4
2017-2021	25.5	Total Mapped*	34.0	28.8	24.4	23.6	23.0	25.8

Note: Includes vehicle, bicycle, and pedestrian crashes.

KDOT Douglas County Traffic-Related Serious Injuries
 *Some crashes don't have mappable data



Source: Kansas Department of Transportation

Anticipated Update: Yearly

Target Set by MPO Policy Board: [November 17, 2022](#)

2023 Target

25.9

Safety

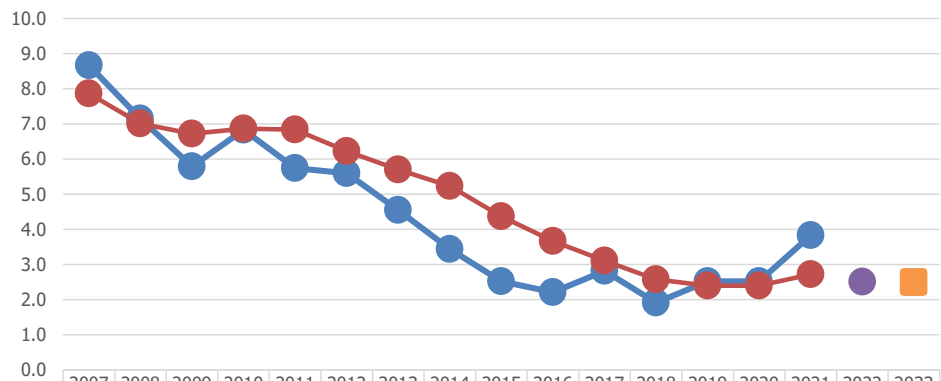
Performance Measure 12: Rate of Serious Injuries per 100 million VMT (all public roads)

This measure includes the ratio of total number of serious injuries to the number of vehicle miles traveled (VMT, in 100 Million VMT) in a calendar year using five-year rolling averages. Law enforcement provides crash information to the Kansas Department of Transportation (KDOT) for compiling and KDOT dispenses the data to the MPO. KDOT changed to the national definition of serious injuries on January 1, 2019 (see the last page for the definitions). The MPO desires improved safety beyond the target; however, the target reflects rolling averages with projections based on historical trends. Data is shown by jurisdiction, but the total Douglas County number is our official measure and MPO target.

Rolling Averages	Total Douglas County
2007-2011	6.8
2008-2012	6.2
2009-2013	5.7
2010-2014	5.2
2011-2015	4.4
2012-2016	3.6
2013-2017	3.1
2014-2018	2.6
2015-2019	2.4
2016-2020	2.4
2017-2021	2.5

Serious injury crashes are shown by the entity who owns and maintains the road the crash occurred on in Performance Measure 11 (the prior page). However, the Vehicle Miles Traveled (VMT) information provided by KDOT is not split into the specific entities crashes occurred on (e.g. township roads). Thus, only the total Douglas County rate is shown here. To see the per entity crashes go to Performance Measure 11.

Note: Includes vehicle, bicycle, and pedestrian crashes.



	2007	2008	2009	2010	2011	2012	2013	2014	2015	2016	2017	2018	2019	2020	2021	2022	2023
— Serious Injury Rate per 100 Million VMT	8.7	7.2	5.8	6.8	5.7	5.6	4.6	3.4	2.5	2.2	2.8	1.9	2.5	2.5	3.8		
— 5-Yr Avg	7.9	7.0	6.7	6.9	6.8	6.2	5.7	5.2	4.4	3.7	3.1	2.6	2.4	2.4	2.7		
— Projected 2022 5-Yr Avg																2.5	
— 2023 5-Yr Avg Target																	2.5

Source: Kansas Department of Transportation
 Anticipated Update: Yearly
 Target Set by MPO Policy Board: [November 17, 2022](#)

2023 Target

2.5

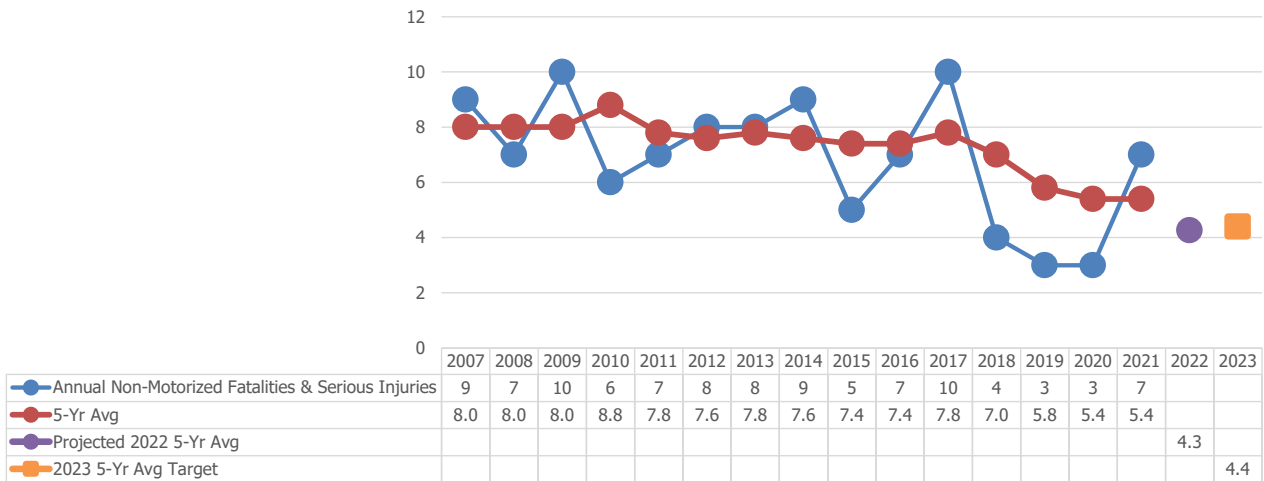
Safety

Performance Measure 13: Number of Non-Motorized Fatalities & Serious Injuries (all public roads)

This measure includes the combined total number of non-motorized fatalities and non-motorized serious injuries involving a motor vehicle during a calendar year using five-year rolling averages. KDOT changed to the national definition of serious injuries on January 1, 2019. The MPO desires improved safety beyond the target; however, the target reflects rolling averages with projections based on historical trends. Rolling average information is shown for the entity which maintains the road the crash occurred on. View the road maintenance map on page 7. The total Douglas County rolling average for the five year period is the official measure and MPO target.

Rolling Averages	Total Douglas County	Crash on Road Maintained by	2012-2016	2013-2017	2014-2018	2015-2019	2016-2020	2017-2021
2007-2011	7.8	City of Baldwin City	0.0	0.0	0.0	0.0	0.0	0.0
2008-2012	7.6	City of Lawrence	5.6	5.4	5.0	4.0	3.8	3.4
2009-2013	7.8	Douglas County	0.4	0.4	0.4	0.2	0.2	0.2
2010-2014	7.6	Kansas Department of Transportation	0.0	0.2	0.2	0.2	0.2	0.2
2011-2015	7.4	Kansas Turnpike Authority	0.2	0.2	0.2	0.2	0.0	0.0
2012-2016	7.4	Private (Lawrence)	0.2	0.2	0.2	0.2	0.2	0.0
2013-2017	7.8	University of Kansas	0.8	0.6	0.4	0.4	0.4	0.2
2014-2018	7.0	Wakarusa Township	0.2	0.2	0.0	0.0	0.0	0.0
2015-2019	5.8	Total Mapped*	7.4	7.2	6.4	5.2	4.8	4.0
2016-2020	5.4	KDOT Douglas County Non-Motorized Fatal and Serious Injuries	7.4	7.8	7.0	5.8	5.4	4.6
2017-2021	4.6							

*Some crashes don't have mappable data



Source: Kansas Department of Transportation

Anticipated Update: Yearly

Target Set by MPO Policy Board: [November 17, 2022](#)

2023 Target

4.4