

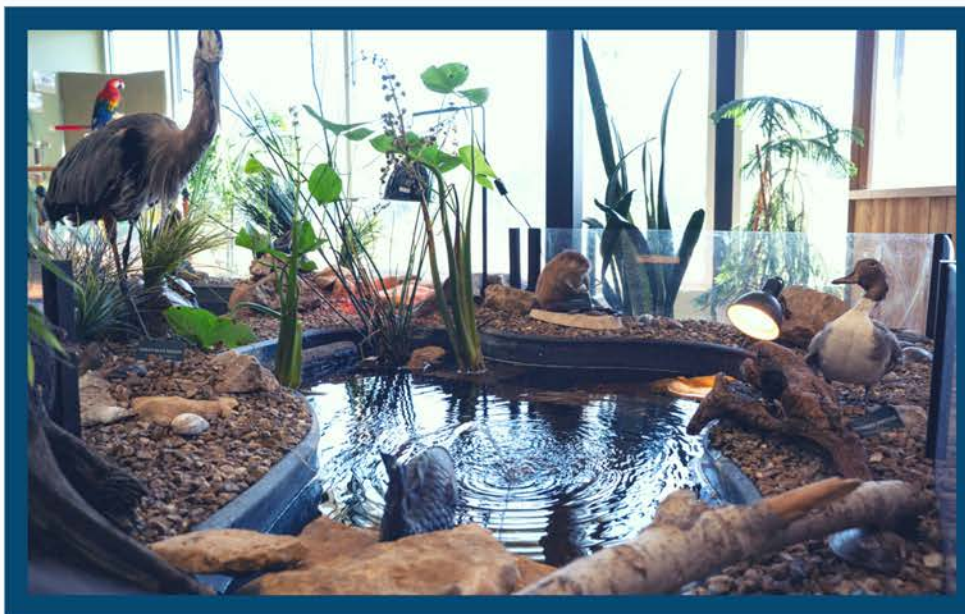
VOL. 1 ISSUE 1 • WINTER 2023

THE PRAIRIE PARK POST

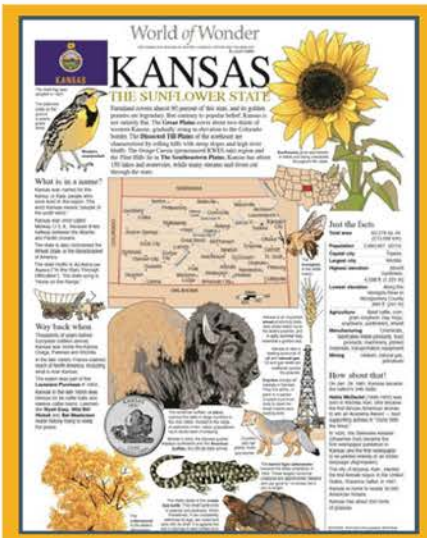
OFFICIAL NEWSLETTER OF THE CITY OF LAWRENCE'S
PRAIRIE PARK NATURE CENTER



New at the Nature Center



Wetland Diorama Updates: The Prairie Park team has been hard at work giving the nature center a facelift, exhibit by exhibit. Their most recent renovation has been an updated wetland diorama (shown above) which allows visitors to interact more closely with and even feed the water turtles. Come check out new interpretive signs, live plants, and more!



"World of Wonder" Signs: Discover our new educational signage from graphic journalist Laurie Triefeldt's beloved "World of Wonder" series. Featured in over 120 newspapers ranging from the Lawrence Journal World to the the New York Times, these are sure to teach you something fascinating! Our new signage features a variety of topics from an in-depth look at nature center critters like our opossum, ferrets, and turkey vulture, to broader conceptual topics such as endangered species, water pollution, and animal hibernation.

THE MISSION of the Prairie Park Nature Center is to promote the preservation of the natural world through hands-on environmental and conservation education.

Get involved!

Interested in volunteering with us? We can always use additional help caring for our animals, facilitating educational programs, and maintaining our preserve. Call 785-832-7980 for more information.

Our education building is located on a 100-acre nature preserve featuring wetland, woodland, and prairie environments. The building features educational exhibits including live Kansas animals and a bird of prey collection. We offer many environmental education programs for a variety of ages. Visit us soon!

OPEN TUES-SAT 9-5
FREE ADMISSION



2730 HARPER ST, LAWRENCE, KS 66046
(785) 832-7980 | www.lawrenceks.org/lprd/ppnc

Don't Miss These: Programs & Events this Season



AGES 3+

Saturdays
December 9 & 16
5:00 - 8:00 PM

Lawrence

winter wonderland

enroll online!
scan here

\$10

Entry is staggered to alleviate crowding.

See the magic and pet some festive furry friends like ponies, llamas, and/or goats! Enjoy a hot cocoa bar, holiday crafts, and a chorus of carolers while viewing our animals underneath the merry twinkling lights. Check out the winter wonderland photo booth to get an adorable family holiday photo. Free for ages 2 and under. Staggered entry throughout event to alleviate crowding and ensure building capacity is not met.



LOESS BLUFFS TRIP

City of Lawrence Kansas

\$67 PER PERSON
Tuesday, January 9
8 AM - 8 PM

Embark on an exciting day trip to experience the wonders of the seasonal bird migration at Loess Bluffs National Wildlife Refuge in Missouri.

One of the greatest migration spectacles in the Midwest happens in Missouri. Loess Bluffs National Wildlife Refuge is known to teem with flocks of waterfowl that even black out the sky at peak times. Join us on a day-trip by bus to check out massive quantities of snow geese, a diversity of ducks and birds, trumpeter swans, herons, bald eagles, and more. We will bring viewing scopes and assist you in identifying the many species of birds. The itinerary includes a stop to purchase lunch.

Join us for our Winter/Spring Programs

- Wild Adventures for Preschoolers and Parents
- Exploring Nature for Homeschool Students
- Loess Bluffs Trip
- Kansas Sugarbush Field Trip
- Eagle Expedition
- Spaghetti and Meatballs with the Animals
- Birds & the Bees: Love in the Animal Kingdom
- Nighttime at the Nature Center
- Breakfast with the Animals
- Spring Break Camp
- Snakes and Scones!
- Nature Center Easter Egg Hunt and Breakfast
- Mushroom Field Trip with a Fun-Guy
- Archery
- Canoeing
- Turtle Yoga
- Campfire Jam: S'mores, Stories, and Songs
- Insect Pinning Workshop
- Crochet with a Critter
- Hike for Health with a Naturalist
- Mindfulness Monday Walk with a Naturalist
- Enchanted Tea Party with the Animals

Use QR code at right for details



**Enroll Here or Call
785-832-7980**

Want to reserve an exciting 1-hour animal program, 2-hour field trip, or birthday party? Call us to learn more!

Seasonal Sightings



As the weather turns chilly and birds begin their journeys south, keep an eye out for Kansas' winter visitors. Thousands upon thousands of birds travel to Kansas each year from the far northern reaches of Canada and even the Arctic circle. Get your binoculars out and see what you can spot this season!

Kansas is in the heart of the "Central Flyway," an important migration route for many bird species. This route has been established due to the area's lack of mountains to fly over, as well as sufficient sources of food and water. We see a wide range of migrant species in Kansas, such as snow geese, a diversity of ducks, bald eagles, trumpeter swans, herons and more. Serious birders head out to sites such as Cheyenne Bottoms Preserve and Quivira National Wildlife Refuge to see the migration. If you'd like to stay closer to home, see what you can spot at Marais des Cynes Wildlife Area, Shawnee Mission Park, or even Baker Wetlands and Clinton Lake! Better yet, join us for our Loess Bluffs trip on January 9th!

There are also winter visitors that can be spotted at feeders, such as the Dark-eyed Junco, shown at right. Winter visitors like red-breasted nuthatches, spotted towhees, Harris Sparrows, Lincoln's sparrows, and more may visit your backyard this season. They're particularly attracted to an unfrozen birdbath and a bird feeder with the right seeds. Don't have your own bird feeder? Make one using a pine cone, vegetable shortening, and seeds like black oil sunflower seeds, millet, peanut kernels, and canary seeds. Kids especially love making these!



Featured Friend

At the nature center, our prairie dogs "Pip" and "Squeak" are some of our most entertaining education animals. Prairie dogs are native to the prairies of North America, where they spend their days eating grasses, watching out for predators, and maintaining their burrow habitats. Prairie dogs are known as a keystone species, because their burrows are important for many species. Their abandoned tunnels provide habitats for other animals, and their engineering activities improve the health of the soil. Prairie dogs live in "towns" with complex social structures, and they have one of the most advanced animal languages. During the winter, prairie dogs enter a period of torpor. Torpor is characterized by a decreased metabolism, lower body temperature, and slower breathing rate. Unlike hibernation, animals in torpor remain awake. Come visit our prairie dogs Pip and Squeak at the nature center to learn more!

Winter Sustainability Tips

Be heat efficient this winter! Bundle up before you turn up the heat. Let heat from the sun in during the day by opening up blinds and curtains. At night, close those back up, turn down the thermostat a bit, and unplug unused appliances. Additionally, make sure your home is well-insulated and free of leaks where cold air can come in. Your wallet and the planet will thank you!

DONATE HERE:



Support our conservation efforts and help us feed our resident animals by donating at the link.

[RB.GY/DTXQN](https://rb.gy/dtxqn)