

Measuring Sustainability Progress: STAR Certification

Parks and Recreation Board

July 10, 2018



Jasmin Moore
Sustainability Director
JaMoore@lawrenceks.org



City of Lawrence





SUSTAINABILITY: THE FOUR-WAY TEST

1. How does it impact ENVIRONMENTAL HEALTH?
2. How does it directly impact the WELL-BEING OF PEOPLE?
3. How does it impact relationships, effective government, social justice, and OVERALL LIVABILITY?
4. How does it impact the LOCAL ECONOMY and at what long and short term costs?





SUSTAINABILITY



Environmental
Health



Society



Local Economy





SUSTAINABLE COMMUNITY

- A sustainable community is one that is ***economically, environmentally, and socially healthy and resilient.***
- It meets challenges through **integrated solutions** rather than through fragmented approaches that meet one of those goals at the expense of the others.
- And it takes a **long-term perspective** – one that's focused on both the present and future, well beyond the next budget or election cycle.

-Institute for Sustainable Communities





Sustainability in local government: a multi-pronged approach

- **Municipal Leadership**
- **Policy/Programs**
- **Community Engagement**





Energy efficiency & conservation

Alternative fleet fuels

Green buildings

Economic development

Local food systems

Transportation

Water

Waste reduction & recycling

Citizen engagement & education





GUIDING DOCUMENTS

- City of Lawrence: Climate Protection Plan (2009)
- Greenhouse Gas Emissions Inventory (2005, 2012)
- Douglas County: County Sustainability Plan (2011)
- City of Lawrence reports from Peak Oil Task Force, Solid Waste Task Force, Bike/Ped Task Force
- City & County: Horizon 2020: Chapter 16 (2011)
- T2040 Transportation Plan
- Douglas County Food Systems Plan (2017)

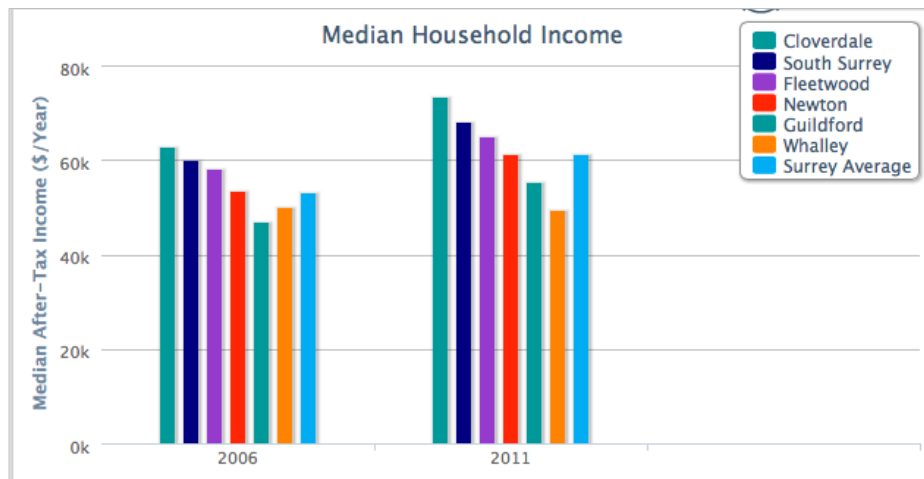
ADVISORY BOARDS

- Sustainability Advisory Board
- Douglas County Food Policy Council





MEASURING SUSTAINABILITY



Sustainable Santa Monica

2012 Sustainable City Report Card

Arts and Culture, Community Education and Civic Participation, Economic Development, Environmental and Public Health, Housing, Open Space and Land Use, Resource Conservation, Transportation, Human Dignity

city of minneapolis 2012 **SUSTAINABILITY** report

The City of Minneapolis is committed to citywide economic opportunity, social equality, and environmental sustainability. For the seventh year in a row, the City is tracking progress on 26 sustainability indicators. Monitoring these indicators helps us understand the state of our community and focus on what needs to be done to preserve and enhance our quality of life for future generations.

To learn more about each sustainability indicator and what is being done to achieve Minneapolis' sustainability goals, visit our new website:
www.minneapolismn.gov/sustainability/indicators



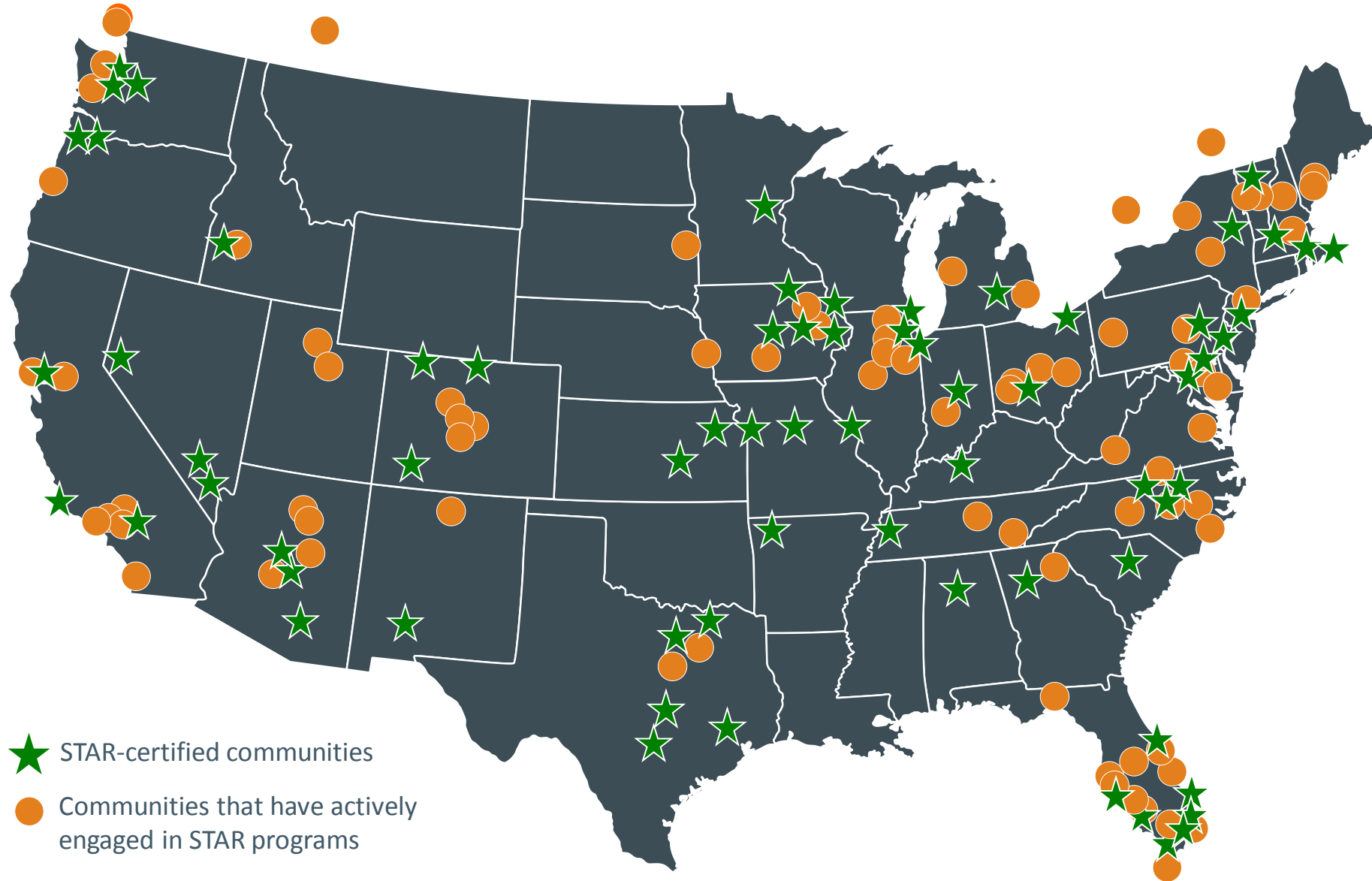
STAR COMMUNITIES

SUSTAINABILITY
TOOLS FOR
ASSESSING &
RATING COMMUNITIES



**SET GOALS. MEASURE PROGRESS.
IMPROVE YOUR COMMUNITY.**

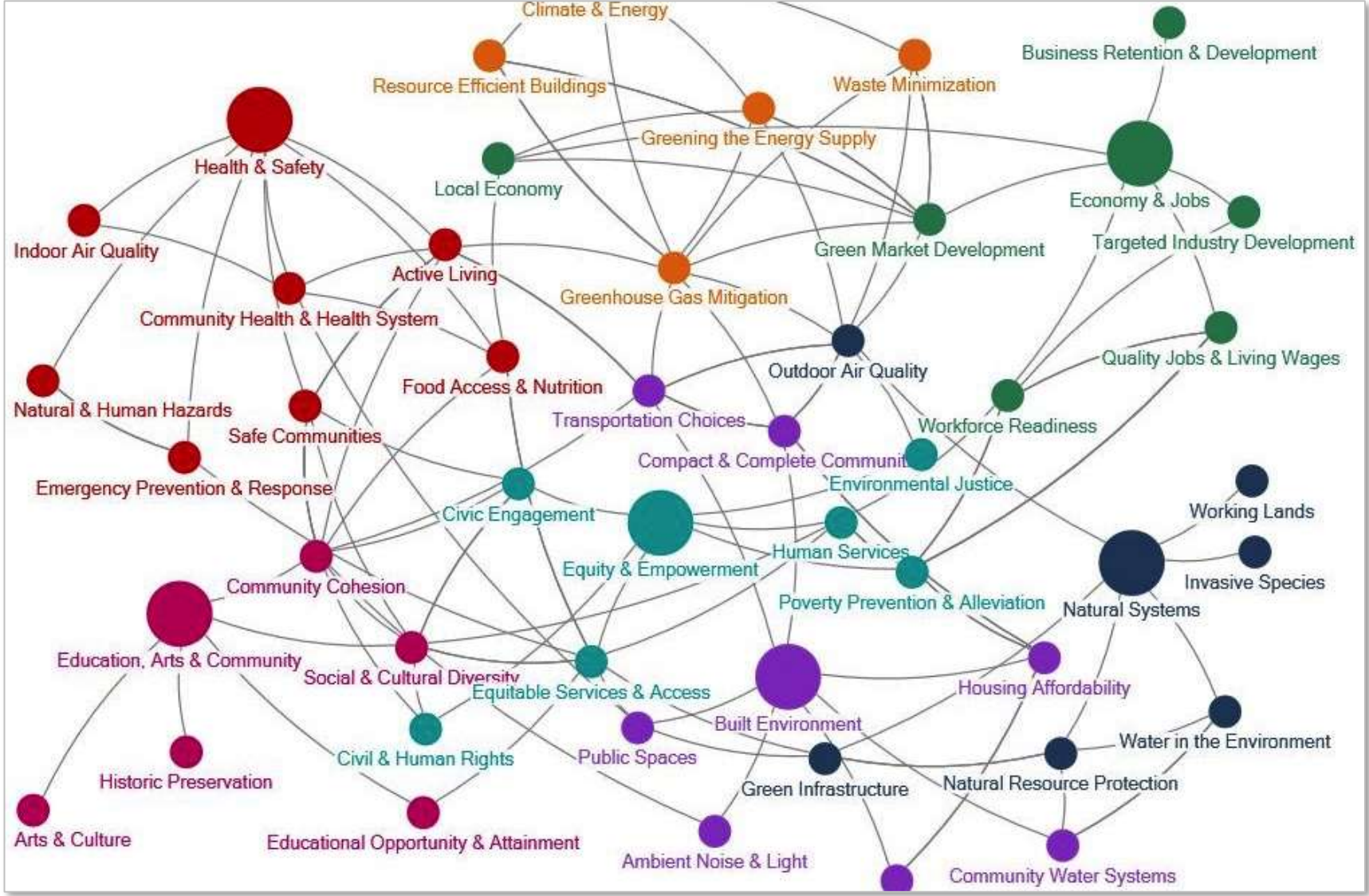
37 STATES + DC | 4 PROVINCES | 170 COMMUNITIES



STAR FRAMEWORK OF GOALS & OBJECTIVES

Built Environment	Climate & Energy	Economy & Jobs	Education, Arts, & Community	Equity & Empowerment	Health & Safety	Natural Systems
Ambient Noise & Light	Climate Adaptation	Business Retention & Development	Arts & Culture	Civic Engagement	Active Living	Green Infrastructure
Community Water Systems	Greenhouse Gas Mitigation	Green Market Development	Community Cohesion	Civil & Human Rights	Community Health	Biodiversity & Invasive Species
Compact & Complete Communities	Greening the Energy Supply	Local Economy	Educational Opportunity & Attainment	Environmental Justice	Emergency Management & Response	Natural Resource Protection
Housing Affordability	Energy Efficiency	Quality Jobs & Living Wages	Historic Preservation	Equitable Services & Access	Food Access & Nutrition	Outdoor Air Quality
Infill & Redevelopment	Water Efficiency	Targeted Industry Development	Social & Cultural Diversity	Human Services	Health Systems	Water in the Environment
Public Parkland	Local Government GHG & Resource Footprint	Workforce Readiness	Aging in the Community	Poverty Prevention & Alleviation	Hazard Mitigation	Working Lands
Transportation Choices	Waste Minimization				Safe Communities	

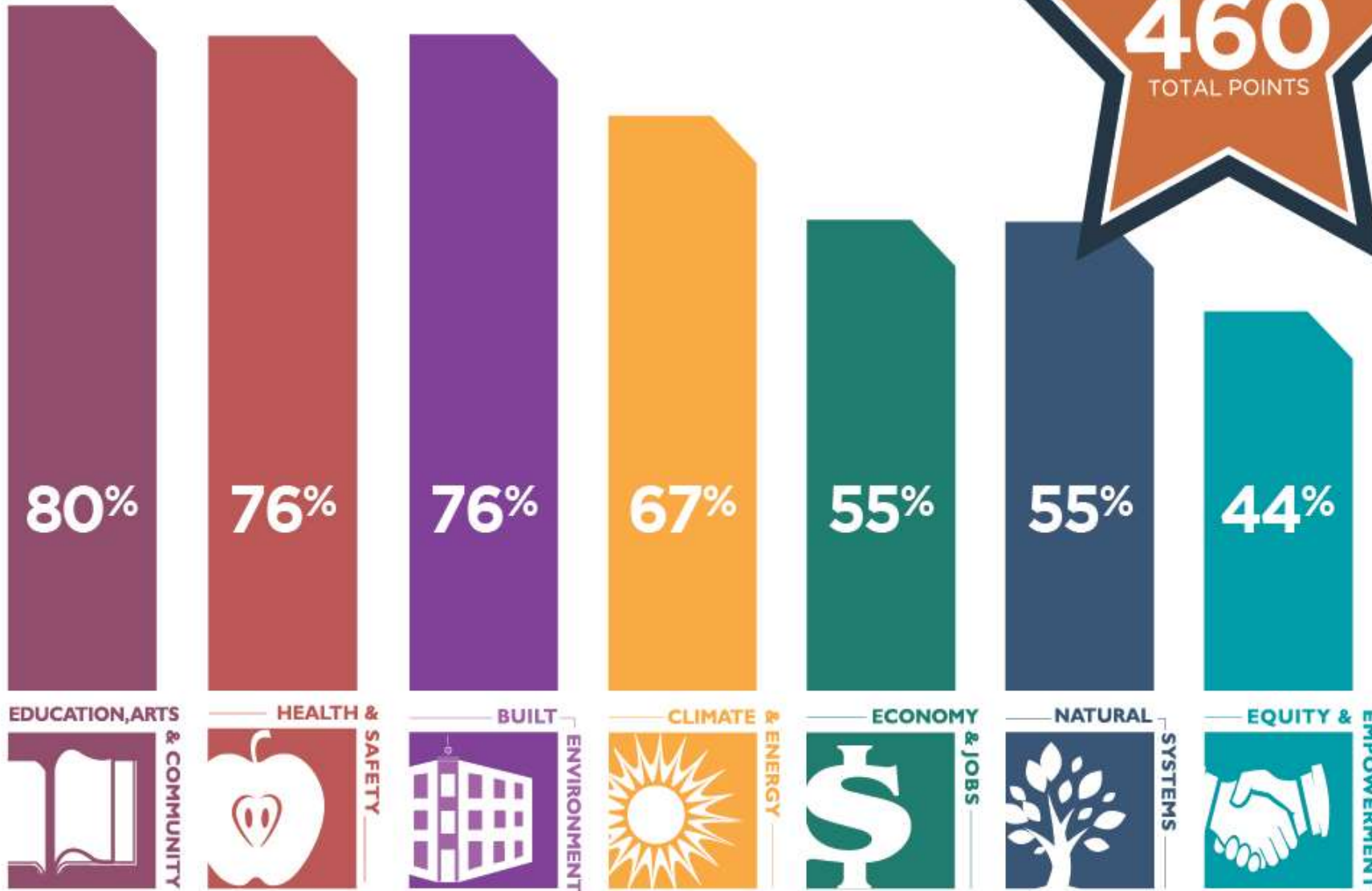
SUSTAINABILITY SYNERGIES



City of Lawrence Score

STAR GOAL AREAS

% OF AVAILABLE POINTS AWARDED





AREAS OF OPPORTUNITY

Public Spaces:

- Conduct a study regarding the economic impact of public parklands on the local economy to understand their contributions to community satisfaction and tourism.
- Adopt site design guidelines for new public parklands and improvements to existing facilities to strengthen environmental benefits and provide visitor amenities.
- Participate in a local or regional alliance working to improve and expand the community-based or regional park system.





AREAS OF OPPORTUNITY

Neighborhood Cohesion:

- **Accessibility of Community Venues and Facilities:**
Demonstrate that at least 75% of residents live within 1 mile of a community venue that is open to the public and offers free services and/or events for residents





AREAS OF OPPORTUNITY

Equitable Services & Access

- Construct new facilities and infrastructure in locations that reduce existing disparities





AREAS OF OPPORTUNITY

Green Stormwater Infrastructure

- Upgrade public spaces and public buildings based upon locally-adopted or recognized best practices in green infrastructure. Where possible, create demonstration projects to enhance public support.

Natural Resource Areas

- Adopt land use strategies to incentivize permanent land conservation





AREAS OF OPPORTUNITY

Outdoor Air Quality

Create or enhance forestry programs aimed at increasing the jurisdiction's tree canopy through active planting, care, and management

Invasive Species

Take critical actions to prevent the spread of invasive species, especially in priority natural systems areas, such as monitoring, eradication, or other control programs





STAR Integration

STAR provides opportunity to support current community planning efforts:

- Comprehensive Plan re-write
- City Commission Strategic Planning & Metrics
- Community Health Plan
- Food System Plan
- T2040 Transportation Plan





FOR MORE INFORMATION:

www.lawrenceks.org/star

www.lawrenceks.org/sustainability

www.douglascountyks.org/depts/sustainability

www.starcommunities.org

Jasmin Moore

Sustainability Director

jamoore@lawrenceks.org



City of Lawrence