

"We Have Tomorrow – Bright Before Us, Like A Flame." *Langston Hughes*



#### PROTECT YOUR PIPES

As temperatures drop this winter, remember to take care of the pipes in your house. Here are some easy tips to avoid frozen water pipes:

1. Disconnect outside hoses
2. Repair leaking faucets outside
3. Cover outside faucets
4. Keep furnaces set to at least 55°

#### OUR MISSION

We create a community where all enjoy life and feel at home.

City information is available at [lawrenceks.org](http://lawrenceks.org) and on cable Channel 25.

The Flame is published by the City of Lawrence, 785-832-3000



## Voters pass Affordable Housing and Emergency Shelter Services Sales Tax

Lawrence voters made their voices heard this November! The proposed change to the Lawrence form of government was rejected and the Affordable Housing and Emergency Shelter Services Sales Tax was passed.

The City of Lawrence is thankful to the community for voting to pass the Affordable Housing and Emergency Shelter Services Sales Tax. This tax replaces the current 0.05% tax with a new 0.10% sales tax. The funds from the tax will be dedicated to affordable housing initiatives and providing temporary emergency shelter services in Lawrence.

"By expanding this tax, our residents have empowered the City to build on the progress we've made in affordable housing and significantly strengthen resources for those experiencing homelessness," said Craig Owens, City Manager. "This dedicated, long-term funding ensures that we can move forward with our commitment to A Place for Everyone, including impactful programs that create greater housing stability and community resilience."

The City looks forward to working with local agencies, advocates, and residents to implement initiatives made possible by the expanded tax, which will have a lasting

impact on the availability of affordable housing and emergency shelter in Lawrence.

Emergency shelter services that this tax will help fund include immediate benefits for people experiencing homelessness, such as food, laundry, transportation, storage, non-prescription medical supplies, and case management and outreach services. It will also help fund homeless prevention services, such as rent stabilization funding, utility assistance, and assistance obtaining government identification cards and government benefits.

Collection for the tax will begin April 1, 2025, and will continue through March 31, 2035.

**Pictured above:** The Estates of Lawrence, a townhome community with 10 buildings of affordable multifamily housing units for income-eligible households of seniors ages 55 and older. This project was supported by the Affordable Housing Trust Fund and completed by Wheatland Investments.

# Snow Season Preparation

You never know when winter weather is going to strike, so it's best to start your preparations early. The City of Lawrence has a number of programs and policies in place to help make the season go as smoothly as possible for residents.

Here are some key reminders for the upcoming snow season!

- Snow plowing operations are generally not effective if there are less than two inches of snow on the ground.
- City crews will typically spread sand and salt on the roadways for icy conditions and small accumulations.
- When snow does hit, City crews follow the snow removal policy.
- You can view the policy, route maps, and live traffic cams online: [lawrenceks.org/snow](http://lawrenceks.org/snow).

As part of the snow removal policy, snow-clearing routes follow a priority order from most-traveled to least-traveled streets. In general, winter operations progress from:

- Arterials: High-capacity areas of travel, such as Iowa St. or 6th St.

- Collectors: Low to moderate-capacity streets that move traffic from local streets to arterials, such as Tennessee St. or Lawrence Ave.

- Areas around schools

- Local streets, such as residential streets and cul-de-sacs

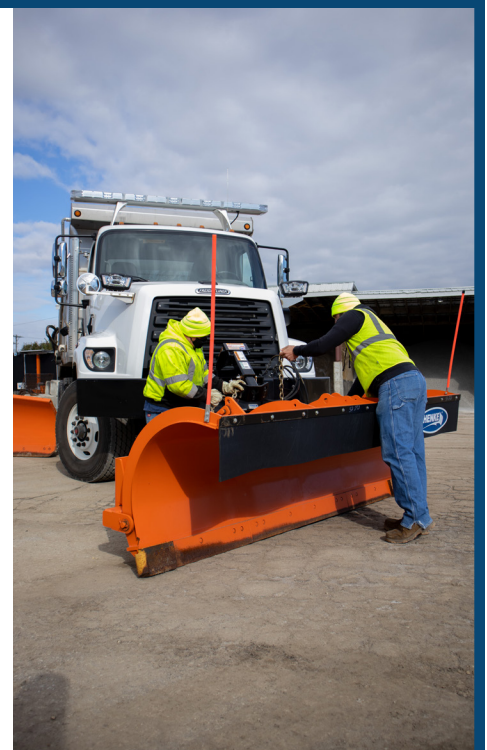
The snow removal and ice control plan allows for 24-hour operations when necessary.

## How to help when snow hits!

When snow accumulations reach two inches deep, crews will begin to plow around cars that are left parked on the street. Any parked cars should be moved off the street prior to plowing operations. If not, the car's owner will be responsible for digging them out.

A windrow of snow is left at the curb when city crews plow snow. Residents and businesses who need access to those drives will be responsible for removing the windrow after crews have plowed the street.

In addition to clearing City streets, it's important to clear sidewalks after snow events. City ordinance No. 8324 states that all property owners must clear their



public sidewalks of snow and ice within 48 hours of a winter storm. If removal of ice is impossible, the property owner or occupant is required to place sand on the sidewalk within 48 hours. This helps keep pathways safe for all Lawrence residents.

## Exciting Progress on 6th Street!

We're thrilled to share the latest updates on our 6th Street improvements, where each project is bringing fresh upgrades, long-term solutions, and safer access for everyone who travels this key route. As we near the finish line, let's take a moment to celebrate the transformations coming to 6th Street, from pavement maintenance and ADA improvements to waterline replacements and new bike and pedestrian pathways.

### Transformative Enhancements from Mass St. to Iowa St.

Since early 2024, crews have been working to enhance 6th St. between Massachusetts and Iowa, a project that includes full-depth pavement patching and major curb, gutter and storm sewer upgrades. In addition to these foundational improvements, we installed 3,000 feet of new waterline to boost water system reliability

For walkers and cyclists, an ADA-compliant shared-use path now runs along the north side of 6th St., from Iowa St. to Wisconsin St., making the area safer and more accessible.

### Pavement and Waterline Upgrades from Iowa St. to Folks Rd.

Another vital project, this work from Iowa St. to Folks Rd. has been focused on ensuring smooth, durable pavement, with ongoing

curb and gutter upgrades as well as a complete replacement of the water main between Champion Lane and Monterey Way. This new infrastructure is designed to stand the test of time, ensuring 6th St. remains a safe, reliable route for all travelers.

### New Traffic Signal for Improved Safety at Queens Rd.

As traffic continues to grow, safety is a priority, and the installation of a new traffic signal at 6th St. and Queens Rd. is set to make a positive impact.

Completed in summer 2024, this new signal will enhance traffic flow and reduce congestion, particularly during peak travel times, making it easier and safer to navigate one of Lawrence's busier intersections

### ADA and Shared-Use Path Upgrades at Schwarz Rd.

Enhancing accessibility along 6th St. is another major focus, and the improvements at Schwarz Rd. bring new ADA-compliant ramps, a traffic signal, and fresh pavement markings. In addition, the installation of a new 10-foot shared-use path along the north side of 6th St. from Lawrence Ave. to Iowa St. means better and safer routes for cyclists and pedestrians, ensuring everyone

has the freedom to travel 6th St. comfortably and safely.

### FINAL TOUCHES – AND WHAT'S NEXT

Currently, our contractors are wrapping up concrete curb and ramp installations and addressing any remaining island medians needing work along 6th St. Throughout November, they worked on concrete and asphalt patching in the outside and inside lanes with milling, patching, and a final street overlay.

Although the overlay should be completed before Thanksgiving, we'll allow a few weeks for curing before applying permanent pavement markings. In the meantime, temporary markings will be used to keep traffic flowing safely throughout 6th St.

The 6th St. improvements are on track to be a major milestone for Lawrence. These upgrades not only address today's infrastructure needs but also set a foundation for a better, more accessible roadway for years to come. **Thank you to our residents, businesses, and visitors for your patience as we bring these projects to life!**

For more updates and details on the 6th Street improvements, visit our website: [lawrenceks.org/mso/6th-street](http://lawrenceks.org/mso/6th-street).