

# Sustainability 2014 Annual Report



Eileen Horn, Sustainability Coordinator  
ehorn@douglas-county.com  
785-330-3121



City of Lawrence



# Sustainability:

---



Economy



Environment



Society

---



# Sustainability: a multi-pronged approach

---

- **Municipal Leadership**
- **Policy/Programs**
- **Community Engagement**





Energy efficiency & conservation

Alternative fleet fuels

Green buildings

Economic development

Local food systems

Transportation

Water

Waste reduction & recycling

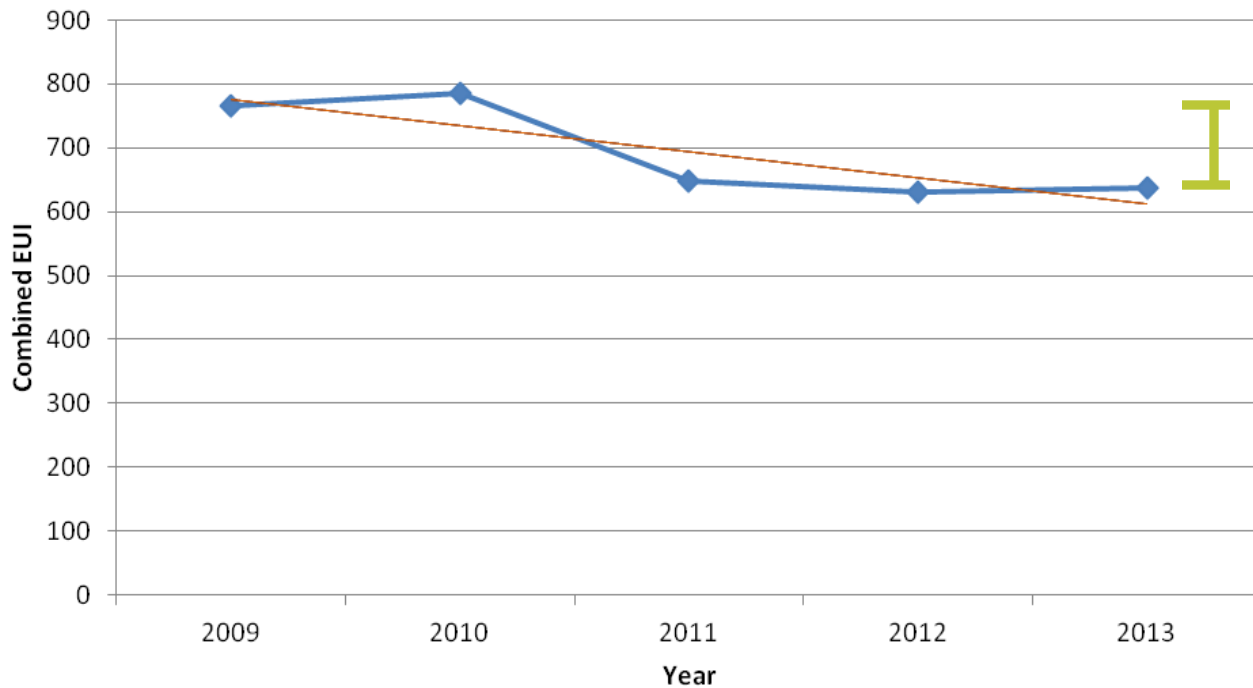
Citizen engagement & education





# Energy Efficiency & Conservation:

**Weather Normalized Site EUI 2009-2013  
Major County Facilities**



Energy use  
reduction:  
**16.8%**

Avoided  
costs in  
2013 alone:  
**\$144,106**

**Between 2009-2013, we reduced energy use in our major County facilities by 16.8%.**



# Energy Efficiency & Conservation:

---

## Sustainability & Energy Savings Reinvestment Fund:

- ✓ Reduce energy costs and operations expenses.
- ✓ Promote the implementation of innovative sustainability solutions.
- ✓ Demonstrate County's commitment to sustainability, stewardship, and conservation.





# Energy Efficiency & Conservation:

City of Lawrence

- ▶ Monthly monitoring of EnergyCAP data.
- ▶ Smartmeters on 40+ main City facilities.
- ▶ Energy audits of buildings.
- ▶ Cost-effective retrofits- especially LEDs:
  - ▶ Vermont St. parking garage, New Hampshire parking garage upper lot & parking lot 16
  - ▶ Fire Station #2 (exterior and interior)
  - ▶ Exterior LED lights at Stone Barn, Central Maintenance Garage, Street Division building, Pinckney tunnel, Holcom west parking lot, South Park administration building, Indoor Aquatic Center, City Hall, Airport
  - ▶ Treatment basin lights at Kaw Water Plant, and 70% of basin lights at Wastewater Treatment Plant
  - ▶ Downtown holiday lighting all LED.





## Alternative Fuels:

City of Lawrence

- ▶ Hybrid Transit buses.
- ▶ CNG pilot project: roll-off container truck, F-150, two F-550s, and fueling station.
- ▶ Electric vehicle charging station & hybrid electric aerial truck.
- ▶ Conversion of Eagle Bend golf fleet to electric carts.







## Renewable Energy:

---

- ▶ Two solar hot water installations at Douglas County Jail and Youth Services installed in 2010.
- ▶ 4.2 kW solar PV system at Douglas County Extension Office – installed in 2010. Has saved 6,300 kWh/yr = \$600/yr.
- ▶ 2015: Installation of 14 kW solar PV system at the new Public Works Facility. Will save 19,074 kWh/year = \$1,800/yr.





City of Lawrence

## Renewable Energy:

- ▶ 10 kW solar PV system installed at Prairie Park Nature Center will produce 14,000 kWh of electricity each year. New educational programming on solar is being developed for adults and kids.
- ▶ Pilot projects with solar PV LED lighting in outdoor applications (i.e. City Hall).





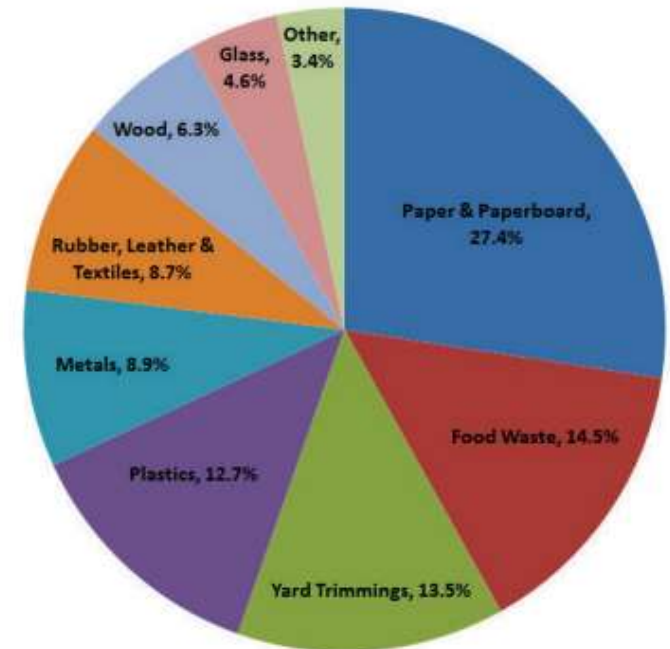
# Waste Reduction & Recycling:

City of Lawrence

- ▶ Curbside recycling began Fall 2014.
- ▶ Other services include: household hazardous waste program, yard waste composting, electronics recycling events, community compost and woodchip sale, and education.
- ▶ Text, email notification of services: [notify.lawrenceks.org](http://notify.lawrenceks.org)



TOTAL MUNICIPAL SOLID WASTE IN US BY CATEGORY (EPA, 2012)










# Waste Reduction & Recycling:

City of Lawrence

## **YES** Permitted recyclable materials listed below.

- Glass food and beverage containers 
- Mixed paper (magazines, catalogues, junk mail, chipboard, milk/juice cartons, paperback books, telephone books)
- Newsprint 
- Office paper
- Shredded paper (must be in clear plastic bags to avoid littering during collection)
- Cardboard 
- Plastic bottles, tubs and jars (marked #1-#7, leave caps on) 
- Tin, steel, and aluminum food and beverage containers
- Scrap metal (sized less than 30-inches all directions and less than 50 pounds each) 

## **NO** Do not place these items in the recycling cart.



- Plastic bags/plastic film (drop-off recycling options)
- Styrofoam™ - polystyrene
- Pyrex® - glass cookware
- Ceramics - cups and dishes
- Trash
- Electronics
- Garden hoses
- Clothing and textiles
- Light bulbs
- Motor oil containers/filters
- Household hazardous waste
- Organics (food & yard waste)

10

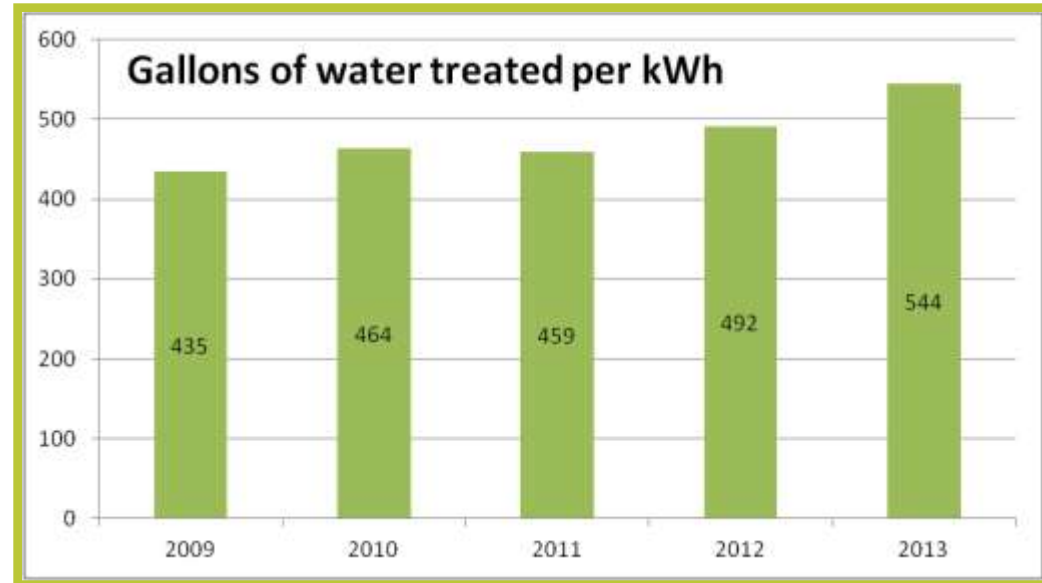
Other items to recycle? [www.LawrenceRecycles.org](http://www.LawrenceRecycles.org)



# Water Conservation & Efficiency:

City of Lawrence

- ▶ Energy efficiency: variable frequency drives for pumps, lighting retrofits to LEDs at all plants and towers.
- ▶ Chemical use reduced with flow pacing and real-time analyzers.
- ▶ Digester gas for building heat.
- ▶ Field crew workday change (four, 10-hour days) reduced fuel usage by 20%.
- ▶ Reclaimed water for Parks & Recreation irrigation use.



# Economic Development:

---

- ▶ Infill development remains a priority:  
(i.e. 1106 Rhode Island, apartment/retail development near KU, and 9 Del Lofts) All increase density, walkability, leverage existing infrastructure, etc.
- ▶ The Lawrence Chamber of Commerce and economic development partners: increased focus on growth of existing businesses - rather than external recruitment.
- ▶ Lawrence VenturePark: City invested in environmental remediation and site prep to attract primary jobs.



# Local, Sustainable Food Systems:

---

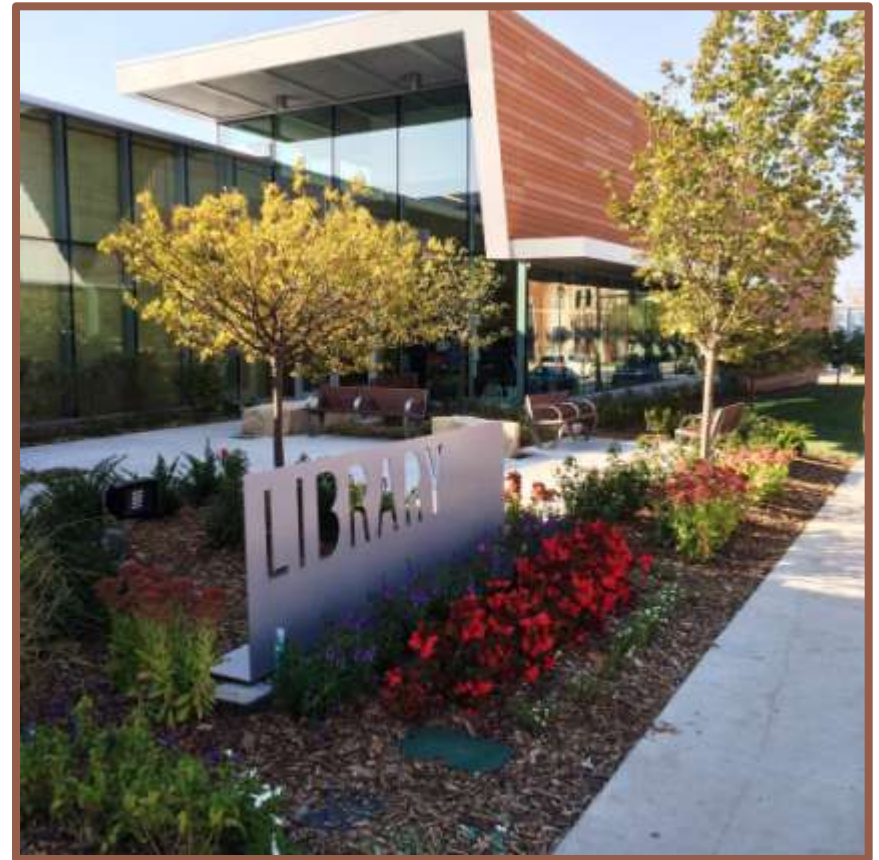
- Lawrence- Douglas County Food Policy Council.
- Common Ground Program.
  - Eight sites in 2014.
- Food hub feasibility study.
- SNAP matching program at Farmers Market.
- Community Supported Agriculture program for employees.



# Green Buildings:

---

- ▶ **Lawrence Public Library** renovation applying for LEED Silver certification.
- ▶ **Douglas County Public Works** facility currently in construction process, aiming for LEED Silver level certification.





# Transportation:

- ▶ T2040 emphasizes multi-modal travel.
- ▶ Multimodal studies:
  - ▶ Countywide Bikeway System Plan
  - ▶ Fixed-Route Transit & Pedestrian Accessibility Study
  - ▶ Commuter Park & Ride Study
- ▶ Complete Streets policy implementation.
- ▶ Re-designated as a Bronze Level Bicycle Friendly Community through 2016.
- ▶ Sidewalk inventory conducted.
- ▶ Safe Routes to Schools planning.



# Citizen Engagement & Education:

---

- ▶ Earth Day Parade and Celebration.
- ▶ Home weatherization grants for low-income homeowners.
- ▶ Prairie Park Nature Center's ecology programming.
- ▶ Classes in various depts:
  - ▶ Rain barrel construction
  - ▶ Composting
  - ▶ Healthy eating
  - ▶ Bicycle safety and helmet fairs



## Guiding Documents:

---

- ▶ City of Lawrence: Climate Protection Plan (2009)
- ▶ Greenhouse Gas Emissions Inventory (2005, 2012)
- ▶ Douglas County: County Sustainability Plan (2011)
- ▶ City of Lawrence reports from Peak Oil Task Force, Solid Waste Task Force, Complete Streets committee, etc.
- ▶ City & County: Horizon 2020: Chapter 16 (2011)
- ▶ T2040 Transportation Plan

## Advisory Boards:

- ▶ Sustainability Advisory Board
  - ▶ Bicycle Advisory Committee
  - ▶ Douglas County Food Policy Council
-

## Sustainability

City Sustainability Initiatives ▾ Participate ▾

Home / Public Works / Quick Links /

## Sustainability

**Sustainability** means making decisions that balance the needs of the environment, economy, and society — for both present and future generations.

In the City of Lawrence, that means finding more efficient, smarter ways of serving our community.

We share our citizens' commitment to sustainability, and are working to foster a healthy environment that contributes to a growing economy and a livable community.

Sustainability Coordinator **Eileen Horn** can be reached at (785) 330-2873 or via email at [ehorn@lawrenceks.org](mailto:ehorn@lawrenceks.org).

### What the city is doing:

Our approach to sustainability involves these key initiatives. Each of these initiatives provides an opportunity to positively impact our City operations and our citizen's quality of life.

- [Energy efficiency & conservation](#)
- [Fuel conservation & alternative fleet fuels](#)
- [Economic development](#)
- [Healthy, local food systems](#)
- [Sustainable transportation](#)
- [Water & utilities](#)
- [Waste reduction & recycling](#)
- [Green building design & construction](#)
- [Outdoors & recreation](#)



### Annual Report

 Download the [2012 Sustainability Annual Report](#)

### What you can do:

Sustainability is a city priority, but creating a healthy environment, economy, and society is going to take the efforts of all of us. Find out [what you can do](#) to participate in the city's sustainability efforts.

- [What you can do](#)
- [Citizen engagement & outreach](#)
- [Sustainability Advisory Board](#)

### City Commission - Meeting Agenda

The **04-01-14** City Commission Meeting agenda is now online.

### I Want To...

- [Apply](#)
- [Contact](#)
- [Dispose](#)
- [Pay](#)
- [Report](#)
- [Sign Up](#)
- [View](#)

### Events

Tue, Apr 8, 2014	
12:00pm	Parks & Recreation Board Meeting
4:10pm	Public Transit Advisory Committee
6:30pm	City Commission Meeting
Sat, Apr 19, 2014	
11:00am	Earth Day Parade & Festival
Sat, May 10, 2014	
10:00am	Lawrence-Douglas County Bicycle Helmet Fair
Thu, Sep 18, 2014	
4:00pm	Youth Camps - Golf & Tennis (runs W/T 9/19)

[View](#)



## Sustainability

Share this page [f](#) [t](#) [in](#) [g+](#) [e](#) [p](#)

**Sustainability** means balancing the needs of the economy, environment, and society. Together, we can create a vibrant economy, a healthy environment, and a livable society for all Douglas County residents – today and into the future.

As a County, we are striving for sustainability in our day-to-day operations, our facilities and buildings, the policies we implement, and the education we provide to our employees and citizens. Currently, we're working to reduce the energy use in our buildings and utilize the free renewable power of the sun where it's appropriate. We have a robust recycling program in our County buildings, innovative pilot programs to reduce fuel use in our fleet, and are working to purchase "green" products for office and cleaning supplies. Our first LEED-certified building is under construction, and our Douglas County Food Policy Council continues to be recognized as a regional leader in developing policies and programs to support our local food economy.



## Our Services

### Energy Efficiency and Renewables



Energy Efficiency and Renewable Energy projects.

### Local Food



Local food systems and programs in Douglas County.

### Green Buildings



Green building options, including LEED.

### Waste Reduction and Recycling



Information on Waste Reduction and Recycling options.

### Community and Employee Programs



Community and Employee Programs, including Common Ground.

### What You Can Do



What you can do concerning sustainability.

## Our Location



### County Courthouse

1100 Massachusetts Street, Lawrence, KS 66044, USA (Second Floor)

**Office Hours:** Monday - Friday, 8:00 a.m. - 5:00 p.m.

**Phone(s):** 785-330-2873, 785-330-3121

**Fax:** 785-832-5148

[Email Us](#)



Meet Sustainability Coordinator Eileen Horn. Sustainability Coordinator Eileen Horn started her

# For more information:

---

[www.lawrenceks.org/sustainability](http://www.lawrenceks.org/sustainability)

<http://www.douglascountyks.org/depts/sustainability>

**Contact:**

**Eileen Horn, Sustainability Coordinator**

**ehorn@lawrenceks.org**

**ehorn@douglas-county.com**

**785-330-3121**

---

