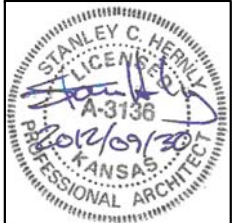




1 SITE PLAN  
21  
1" = 50'-0"

**BARTLETT & WEST**  
439 VERMONT STREET - LAWRENCE KS 66044-2882  
PHONE 785.749.2452 - FAX 785.749.8961  
WWW.BARTWEST.COM

Note:  
This schematic Site Design drawing was prepared for and included in the Historic Structure Report dated December 15, 2009 for the Santa Fe Station. Its inclusion here is for reference only and is not intended to depict any specific Work included in this Preservation Project. Construction Documents for site improvements, beyond those depicted elsewhere in these Construction Documents, shall be provided separately from these documents and are not part of this project.



**SANTA FE STATION**  
PRESERVATION PROJECT  
413 E 7TH STREET, LAWRENCE, KANSAS

**Hernly ASSOCIATES**

920 Massachusetts  
Lawrence, Kansas  
66044  
785 - 749 - 5806  
FAX 785 - 749 - 1515

SCHEMATIC SITE DESIGN

Date: 2012/09/30  
Drawn by: SJB  
Checked by: SCH  
Revisions:



**SANTA FE STATION**  
 ACCESSIBILITY IMPROVEMENTS  
 413 E 7TH STREET, LAWRENCE, KANSAS

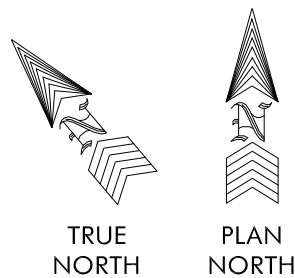
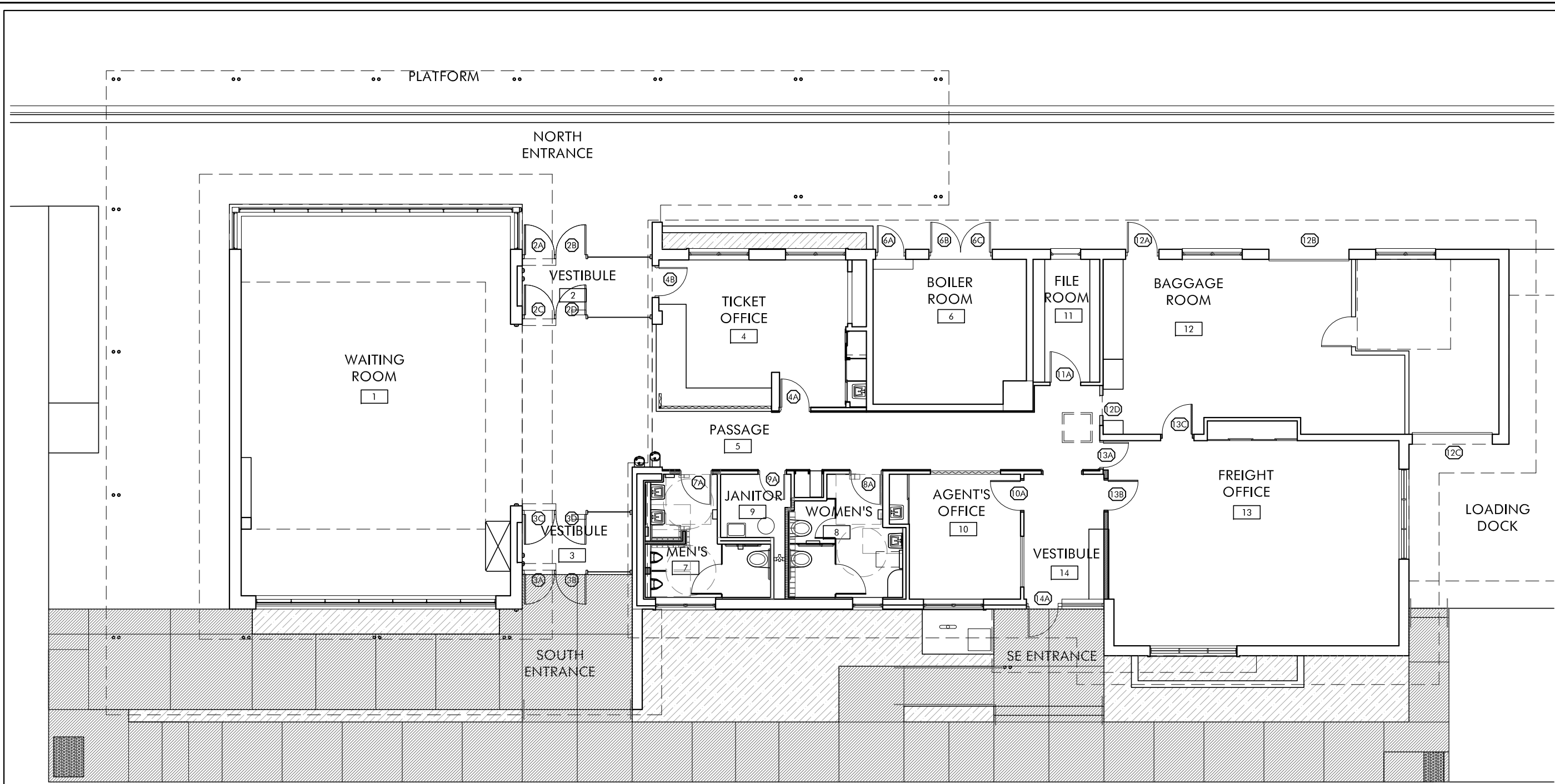
**Hernly  
 ASSOCIATES**

920 Massachusetts  
 Lawrence, Kansas  
 66044  
 785 - 749 - 5806  
 FAX 785 - 749 - 1515

PLAN

Date: 2012/09/30  
 Drawn by: SJB  
 Checked by: SCH  
 Revisions:

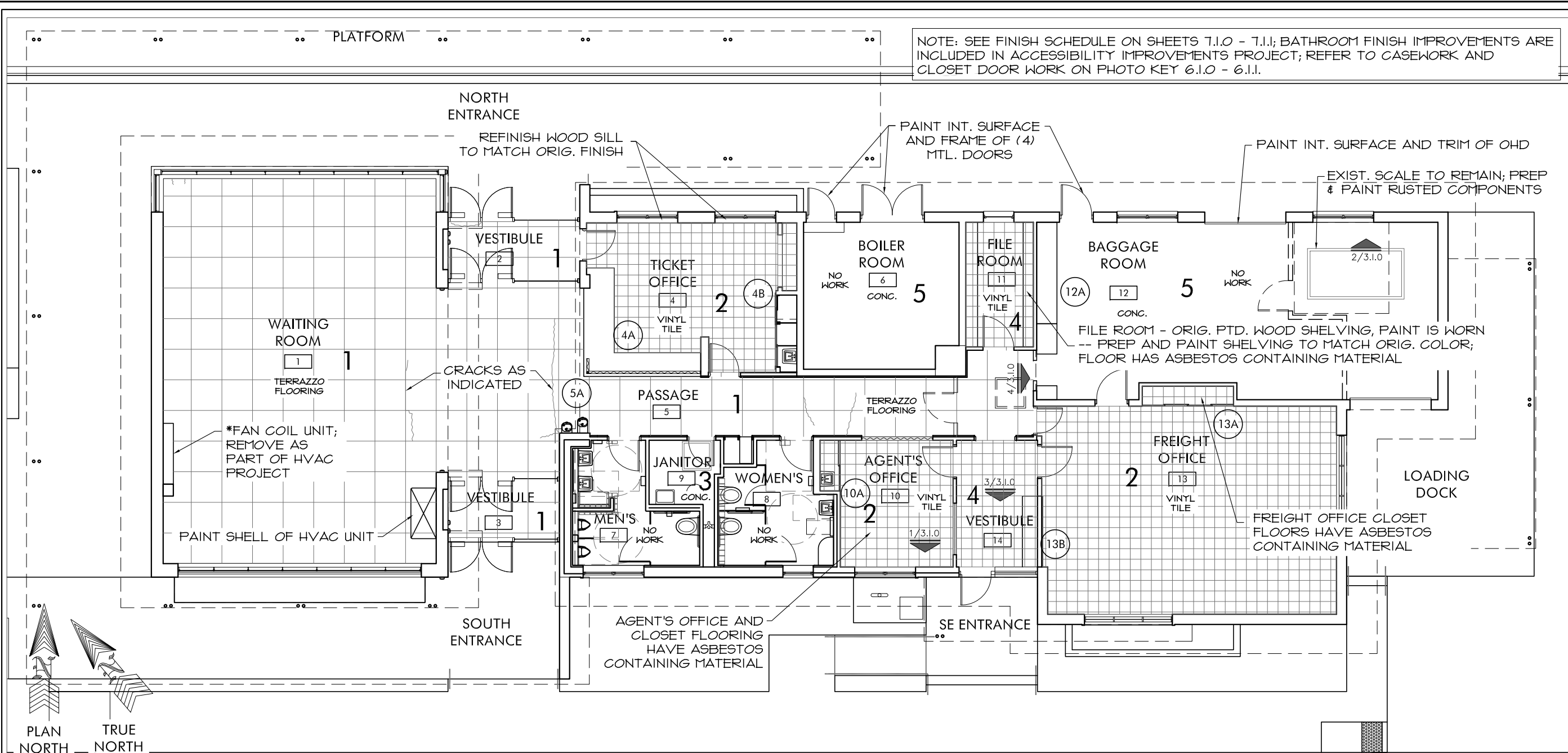
**1.A.3**



7TH STREET

7TH STREET

**1 FLOOR PLAN OVERVIEW**  
 3/32" = 1'-0"



**SANTA FE STATION**  
 INTERIOR RESTORATION  
 413 E 7TH STREET, LAWRENCE, KANSAS

**Hernly ASSOCIATES**

920 Massachusetts  
 Lawrence, Kansas  
 66044  
 785 - 749 - 5806  
 FAX 785 - 749 - 1515

**1 FINISH FLOOR PLAN**  
 3/32" = 1'-0"

**NOTES:**

- 1. Terrazzo Flooring: Re-grind, clean, and seal existing terrazzo per specification section 096610.
- 2. 12x12 vinyl tile is not original, 9x9 vinyl asbestos tile in closet is original -- Replace existing 12x12 vinyl tile w/ new 12x12 vinyl tile to match original color

- 3. Exist. conc. floor to remain -- Replace exist. 30x30 steel floor hatch w/ new steel or aluminum door & frame
- 4. 12x12 vinyl tile is not original -- Replace existing vinyl tile w/ new 12x12 vinyl tile to match original color
- 5. Existing concrete floor to remain

**FLOOR RESTORATION NOTES**

**1.1.0**

PLAN

Date: 2012/09/30  
 Drawn by: SJB  
 Checked by: SCH  
 Revisions: