

Date January 18, 2018

To: Casey Toomay,
Assistant City Manager
City of Lawrence

From Dan Partridge 
Director
Lawrence-Douglas County Health Department

RE: 2017 Progress Report and Expense Report

Thank you for the opportunity to provide this report as required by section IV, A of our 2017 *Agreement for the use of City General Funds*. As we work to achieve our mission of improving health for all your support is invaluable. On behalf of all of our clients and the residents of Lawrence thank you for continuing to invest in their health and quality of life through your support of public health.

City funds in the amount of \$671,401 were received in 2017. These funds were used for the purposes

- \$210,459 General operating and administrative
- \$188,277 Clinic services
- \$159,277 Community Health
- \$82,931 Family and Senior Support Services
- \$30,457 Epidemiology and Environmental Public Health

The attached reports describe the services delivered. In addition, we respectfully request the opportunity to present this report at a future City Commission meeting.

Respectfully submitted.



Lawrence-Douglas County
Health Department



@ldchealth



200 Maine, Suite B
Lawrence, KS 66044-1396
OFFICE: 785.843.3060
CLINIC: 785.843.0721
ldchealth.org

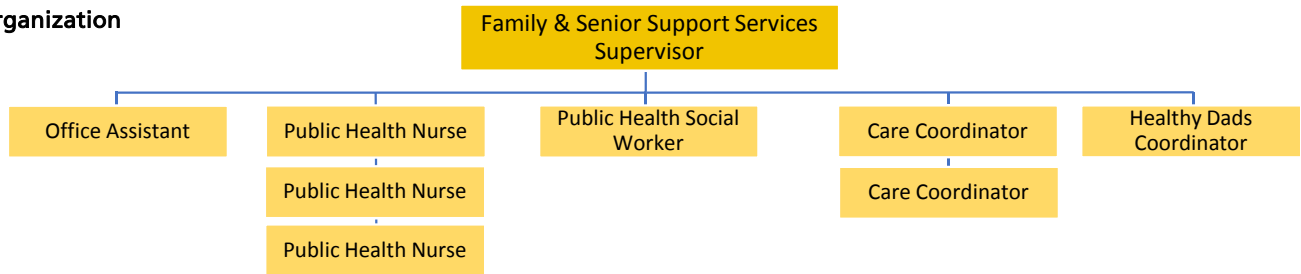
City Tax Support: \$82,931

Program Purpose

We provide holistic support to families and older adults facing challenges to enhance quality of life.

Program Organization

FTE History	
2015	7.3
2016	8.1
2017	8.3



Program Description

Case management services include working with young families in our Healthy Families program, fathers in our Healthy Dads program, and seniors in our Project LIVELY program. Healthy Families is an evidence based program to support parents facing multiple stressors in their lives. Staff meet with families regularly in their home to teach them about their child's health and development, help them access health care, assist them with goal setting and link them to community services. The Healthy Dads program offers classes to help fathers build positive relationships with their children and themselves.

Project LIVELY (Life, Interest and Vigor Entering Later Years) promotes the health of older adults. Our goals are to educate individuals about available resources and connect them with the help they need to stay safely in their homes and reduce premature nursing home placement. To accomplish this we collaborate with community partners and advocate for aging issues.



Performance Indicators

	2015	2016	2017	Target
% of children in Healthy Families program up-to-date on immunizations	97%	96%	94%	≥ 90%
% of child developmental screenings completed	85%	92%	93%	≥ 90%
% of Project LIVELY home visits completed	86%	96%	94%	≥ 96%
% of men completing Healthy Dads curriculum	NA	NA	34%	> 50%

Notable Activities

- Healthy Dads program builds relationships with district court judges.
- Project LIVELY collaborated with KU Academic Health Department to create a new intake tool that will better assess the overall wellbeing of clients.
- Local physician groups use ACEs (Adverse Childhood Experiences) screening to refer clients to Healthy Families.



Program Impact Story

When a resident is referred to Project LIVELY, a care coordinator will contact the resident within a couple of days to set up a home visit. The care coordinator will then visit with the resident and/or family to learn about the resident's needs and goals. "We want to understand holistically what is going on," said Susan Ridenour, Project LIVELY care coordinator. "The question we always ask is: 'What does the person need?' Then, we look at the appropriate options with them to develop a care plan to meet their goals."

Ridenour met 93-year-old James Walsh, who had fallen a couple days before, called 911 and declined to go to the hospital. His longtime friends and neighbors were concerned about him because he wasn't feeling well, had no appetite and was having trouble moving his legs. After visiting with Ridenour, Walsh decided to go to the hospital, where he received a diagnosis of Parkinson's disease and was able to get medications and therapy he needed. During an interview in December, he said he was feeling much better and thankful for Ridenour's help. "It was a good thing she was here," he said with a smile.

Revenues

	Operating	Grants	Local tax	Other	Expenditures
2017	17%	57%	26%	0%	\$842,181

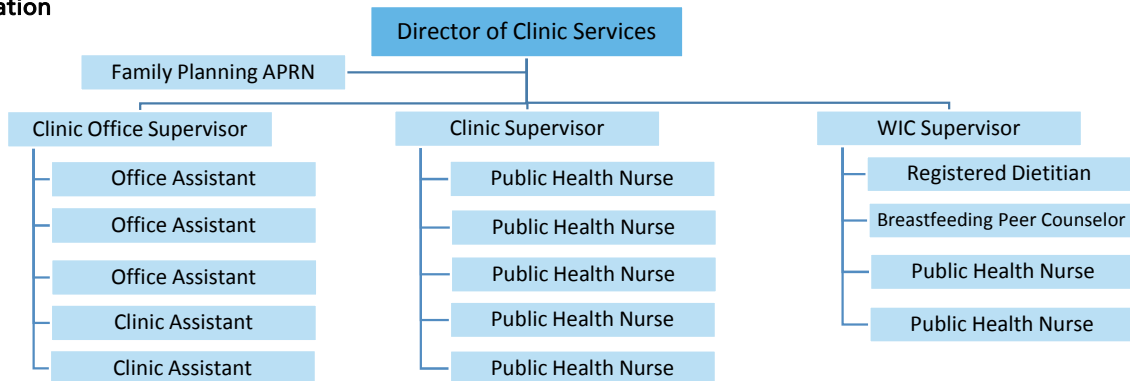
City Tax Support: \$188,277

Program Purpose

We provide compassionate services to promote the health and well-being of our community.

Program Organization

FTE History	
2015	16.9
2016	16.3
2017	15.5



Program Description

Our clinic emphasizes prevention and education serving over 10,000 clients each year with the following services: immunizations for all ages; women's health and family planning; sexually transmitted infection testing and treatment; and nutritional support and counseling for pregnant or nursing women and their children.



Performance Indicators

	2015	2016	2017	Target
% of contraception users continuing with method beyond first 3 months	68%	73%	74%	≥ 75%
Tobacco cessation counseling rate	75%	75%	80%	≥ 80%
Average clinic service time (minutes)	N/A	48	50	<60
% of WIC appointments within processing standards	N/A	95%	93%	100%



Notable Activities

- STD testing available for walk-in clients results in more residents receiving services.
- Same-week scheduling made available for WIC clients reduces missed appointments.
- Door hangers offering free flu shots were distributed in nearby neighborhood.

Program Impact Story

About 10,000 people use the Health Department's clinic services each year. A survey of 424 clients revealed that 46 percent did not have a regular health care provider. The new collaboration between the Health Department and Heartland Community Health Center aims to change that percentage.

Heartland began offering its services in November 2016 and within a month and a half, 36 Health Department clients were referred to Heartland for help with tobacco cessation, high blood pressure, behavioral counseling, medication management, health screenings and other services.

Health Department staff say it's rewarding to see people receive the care they need. For example, a young woman drove her parents to the Health Department to get flu vaccinations. They were from India and hadn't seen a health care provider in more than 10 years. The Health Department nurse noticed that both parents had elevated blood pressure and recommended Heartland's services. They accepted and received services from a Heartland provider that day.

Revenues

	Operating	Grants	Local tax	Other	Expenditures
2017	22%	46%	31%	1%	\$1,528,090

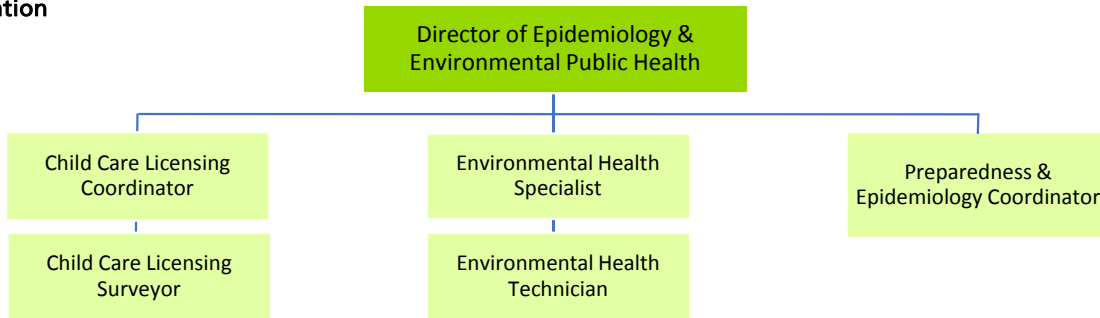
City Tax Support: \$30,457

Program Purpose

Through preventative and enforcement activities we ensure and safeguard healthy environments for all.

Program Organization

FTE History	
2015	4.2
2016	4.5
2017	4.8



Program Description

Epidemiology and environmental public health services enforce public health laws. These laws include Kansas communicable disease and child care licensing regulations. Enforcement of local city and county laws include the Douglas County Sanitary Code and City of Lawrence public pool and spa ordinance. We accomplish all of this through field inspections and investigations. Through public health preparedness activities we improve the capacity of staff, volunteers, community partners and individuals to respond to and recover from significant health incidents.



Performance Indicators

	2015	2016	2017	Target
Average number of days to complete real estate inspection	N/A	N/A	9	≤ 7
% of childcare licensing surveys completed	96%	96%	96%	≥ 90%
% of essential staff reached within 60 minutes of initiation of a notification drill	100%	100%	100%	≥ 91%

Notable Activities

- Health Department staff offered training to licensed childcare providers on new state regulations.
- Swimming pool and spa licensing requirements were updated to meet national standards.
- Health Department increased epidemiology surveillance of Douglas County residents.



Program Impact Story

When a concerned mother reported a dangerous abandoned well on an adjacent property in rural Douglas County, the Health Department's Environmental Health staff worked to assure the well was safely plugged. The Douglas County Sanitary Code states that an abandoned well is in violation of the code and must be plugged in accordance with Kansas Department of Health and Environment regulations for the purpose of keeping contaminants from underground aquifers. As is often the case in these situations, the property owner was not even aware that the abandoned well existed. With assistance from the Health Department the property owner was able to locate a licensed well driller who was able to plug the well in a way that preserved water quality and eliminated the danger.

Revenues

	Operating	Grants	Local tax	Other	Expenditures
2017	39%	31%	30%	0%	\$352,560

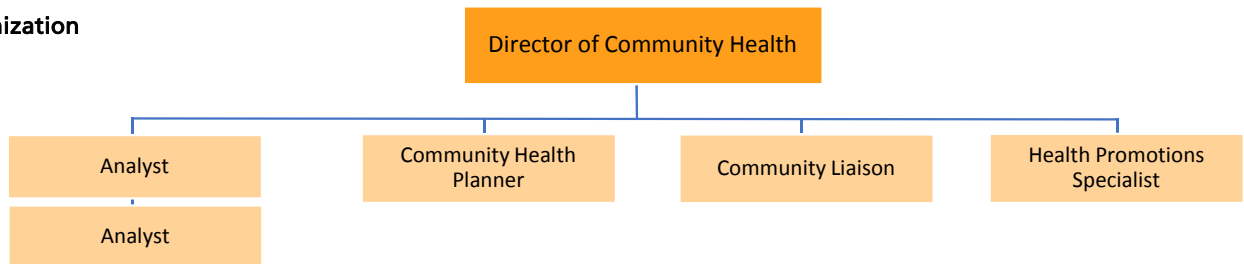
City Tax Support: \$159,277

Program Purpose

We work across the community to understand and address the root causes of health and to promote health as a human right for all.

Program Organization

FTE History	
2015	6.9
2016	7.3
2017	6.5



Program Description

The Health Department's Community Health Program is responsible for monitoring the health status of the community to identify health determinants and health disparities in the population. We work to mobilize community partnerships to implement evidence-based strategies and evaluate impact of program outcomes to improve community health. Our targets are a reduction in chronic disease by modifying behaviors that influence health.



Performance Indicators

	2015	2016	2017	Target
# of community or system change events	10	23	18	≥ 12

Notable Activities

- Coordinated the CHAMPS (Cities Combating Hunger Through After School and Summer Meal Programs) grant on behalf of the City of Lawrence.
- Supported efforts of the University of Kansas to develop and implement a tobacco-free campus policy that will go into effect during the Summer of 2018.
- Coordinated efforts leading to the passage of a resolution creating tobacco-free parks in LeCompton, the third Douglas County community to establish this policy.
- Assisted Lawrence Public Schools with expansion of BLAST (Bike Lesson and Safety Training) to all Lawrence public elementary schools as part of Safe Routes to School efforts.



Program Impact Story

In the Fall of 2017 the Health Department produced a new Community Health Assessment (CHA), on behalf of a multi-disciplinary team of over 30 community leaders from Douglas County. The team comprised a Steering Committee of elected officials and other stakeholders from all jurisdictions in the county that had been meeting since 2016 to oversee the development of the Assessment.

The assessment used a multi-methods approach to gain a deep understanding of health and the factors that drive health outcomes in Douglas County. These methods consisted of a health issues survey completed by more than 2,000 residents, an organizational assessment of almost 50 businesses and organizations, a Local Public Health System Assessment (a self-assessment involving over 50 stakeholders from across the county using a nationally-recognized instrument), a Photovoice project involving youth from Van Go Arts, and compilation and analysis of a broad array of available public health data. The CHA, consistent with earlier work, demonstrated that it is primarily preventable chronic diseases like cancer, heart disease and stroke that are leading causes of death in Douglas County. Unintentional injuries – including those caused by misuse of drugs including opioids – and suicide are also concerns, particularly among some population groups.

The Community Health Assessment & Planning Steering Committee, after extensive review of all of the available data, has chosen to develop the new Douglas County Community Health Plan around the themes of health equity and discrimination. These themes will be examined through the lens of four key issues that emerged in the CHA:

- Access to healthy food and physical activity
- Behavioral health
- Poverty and a lack of good-paying jobs
- Safe and affordable housing

The new Community Health Plan will be completed later in 2018. Information about the plan and the Community Health Assessment are on the Health Department website at: <http://ldchealth.org/221/Community-Health-Plan>.

Revenues

	Operating	Grants	Local tax	Other	Expenditures
2017	0%	60%	40%	0%	\$986,677