

City of Lawrence  
Outside Agency  
Bi-annual Report  
2016

Reports on activity should be submitted electronically to Danielle Buschkoetter, at [dbuschkoetter@lawrenceks.org](mailto:dbuschkoetter@lawrenceks.org). Reports on activities from January 2016 to June 2016 are due on July 15<sup>th</sup> 2016. Cumulative reports on activities from January 2016 through December 2016 are due on February 15<sup>th</sup> 2017.

**Agency Name:** Douglas County Historical Society/Watkins Museum of History

**Reporting Period (please check one):**

☐ January - June  
(deadline July 15)

☒ January – December  
(deadline February 15)

1. Give a brief narrative of the activities that were funded with City funds over the reporting period checked above.

Between January 1 and December 31, 2016 City funds were used to supplement a Douglas County Heritage Conservation Grant and private funding for several projects associated with the Watkins Museum's core exhibits on the museum's second and third floors. On the second floor, the refurbishment of the museum's original bank tellers' counter, installation of family-focused hands-on activities there, and the development of a family guide to the second floor exhibit were completed in March 2016. On the third floor, restoration of the museum's 1870s playhouse, relocation/installation of several major artifacts to their permanent locations, construction of exhibit partition walls, and development of core exhibit schematic drawings and budget projections was completed. The third floor reopened in October. Throughout the building, permanent interpretive panels were installed to describe the history of the Watkins Building and its architectural detail.

2. Provide specific detail (and supportive documents, if needed) to demonstrate progress made toward your goals/objectives.

The following projects were completed by mid-year and were described in detail in the July 2016 report:

- Second Floor Tellers' Counter interactive exhibit and Family Guide
- 1870s Playhouse restoration and furnishing
- Watkins Building interpretive panels
- Relocation of Watkins Land Mortgage Company vault door and clock

Since June the following work was completed according to plan:

Schematic drawings detailing the components of the third floor core exhibits were completed. These drawings allowed us to site exhibit partition walls and develop detailed budget estimates for the exhibits. With budget estimates in place the DCHS Board of Directors will proceed with fundraising to fabricate and install core exhibits in 2017.

Exhibit partition walls were constructed. The façade of the Blondie Corp Barber Shop (from a building originally located in the 1800 block of Massachusetts Street) was relocated to its permanent location and restored to its early 1900s appearance. Completion of this construction work means that the third floor is configured to receive the planned core exhibits, with no additional construction or electrical work required, as funding becomes available.

New lighting fixtures were added to the main stair hall and back stair hall to increase light levels and improve safety for visitors using the stair cases. A transom window on the third floor that had been blocked by abandoned HVAC duct work was restored.

3. How have you impacted the citizens of Lawrence?

The third floor reopened to the public in October 2016. Since then 5,033 people visited the Watkins Museum—nearly a third of the museum's record-breaking attendance of 16,668 for the year (an 8% increase over 2015 attendance). The Playhouse is a prominent feature of the third floor and a major draw for visitors. It was featured in two major programs for families, Halloween at the Watkins and the Tails and Traditions Festival. These events drew attendance of over 2,300. The Tails and Traditions Festival, which takes place on the day of the Old Fashioned Christmas Parade downtown, is a major attraction for families and keeps them downtown where they patronize local businesses (see attached evaluation report summary).

A new series of programs for home school students was developed in 2016. These programs make use of the activities installed in the Tellers' Counter and in the Family Guide to the second floor exhibit. This series will continue in 2017.

4. What barriers, if any, have you encountered?

No barriers were encountered other than a construction delay caused by issues with discontinued lighting fixtures and delays in shipping lighting fixtures from the manufacturer. These issues delayed construction and electrical work.

5. Review the line-item budget you provided in your application. How much of your allocation has been spent?

The entire allocation was spent.

Project Expenses through December 31, 2016:

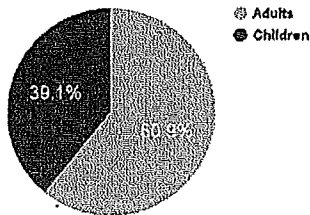
Tellers' Counter/Family Guide Graphic Design	\$3,500.00
Tellers' Counter Fabrication and Installation	\$7,355.62
Tellers' Counter Activities	\$145.12
Family Guide Printing	\$145.00
Building Interpretation Fabrication/Installation	\$1,430.00
Large Artifact Relocation/Installation	\$6,250.00
Playhouse Restoration	\$1,811.33
Playhouse Activities and Furnishings	\$1,057.66
Construct Exhibit Partition Walls	\$6,150.00
Restore Blondie Corp Barber Shop	\$550.00
Stair Hall Lighting	\$4,263.56
Transom Window Restoration	\$578.00
Total Expenses:	\$33,236.29



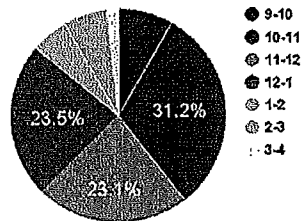
## Watkins Museum Tails & Traditions 2016 Infographic

1 out of every 3 people said this was their 1st visit to the Watkins Museum.  
For almost 2 out of every 3 people, this was their 1st time at Tails and Traditions.

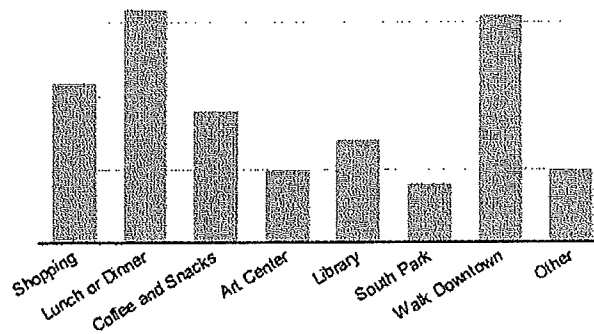
Visitor Make-Up



Visitors By the Hour



What Else Were Visitors Doing?



Total number of visitors to the Watkins for Tails and Traditions 2016 is 738, and the average experience rating is 9.5 out of 10!

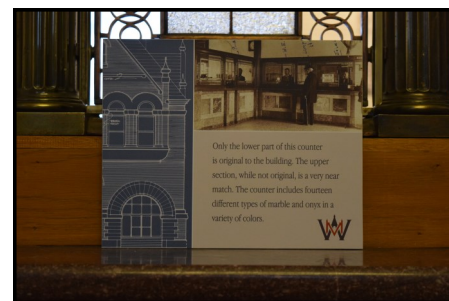
What visitors said about Tails and Traditions



**Douglas County Historical Society/Watkins Museum of History**  
2016 Bi-annual Progress Report on City of Lawrence Funding  
January-December 2016

**Photographs**

**Tellers' Counter Family Interactive and Gallery Guide for Families**



Examples of Watkins Building History  
Interpretive Panels



Restored 1870s Playhouse







Relocated Major Artifacts



Restored Barber Shop Facade



Completed Third Floor