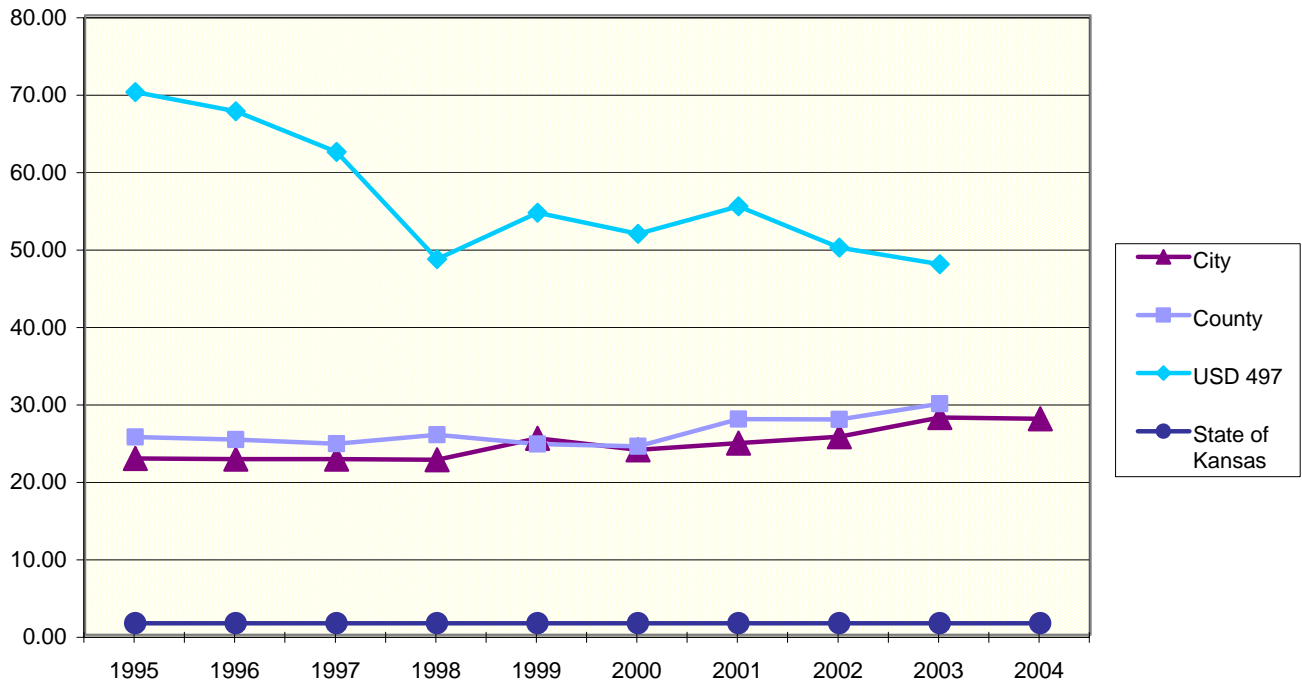


Comparison of Local Levies - City, County, School District, and State: 1995 - 2004



Year	City	County	USD 497	State of Kansas	Total
1995	22.78	25.52	70.1	1.50	119.90
1996	22.67	25.19	67.59	1.50	116.95
1997	22.67	24.66	62.36	1.50	111.19
1998	22.60	25.84	48.5	1.50	98.44
1999	25.36	24.62	54.52	1.50	106.00
2000	23.90	24.32	51.78	1.50	101.50
2001	24.77	27.86	55.34	1.50	109.47
2002	25.56	27.82	49.98	1.50	104.86
2003	28.07	29.84	47.84	1.50	107.25
2004	27.90			1.50	29.40