

**WATER AND
WASTEWATER FUND**

**CLINTON WATER TREATMENT
ACCOUNT 501-7210-581**

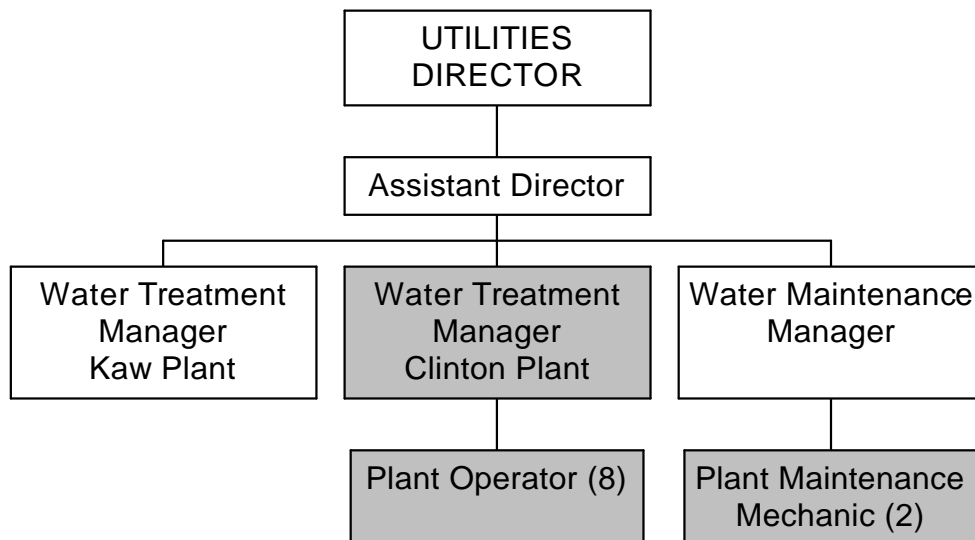
2005 DEPARTMENT / DIVISION SPENDING SUMMARY

EXPENDITURES	2003 Actual	2004 Adopted	2004 Estimate	2005 Budget
Personal Services	\$ 592,259	\$ 617,162	\$ 617,162	\$ 670,103
Contractual Services	317,469	389,600	389,600	422,300
Commodities	502,327	502,700	502,700	611,000
Capital Outlay	23,380	64,000	64,000	62,000
Debt Service	-	-	-	-
Transfers	15,000	15,000	15,000	15,750
Contingency	-	145,000	145,000	95,000
Total	\$ 1,450,435	\$ 1,733,462	\$ 1,733,462	\$ 1,876,153

DEPARTMENT / DIVISION PERSONNEL SUMMARY

PERSONNEL	2003 Actual	2004 Adopted	2004 Estimate	2005 Budget
Authorized Positions	11.0	11.0	11.0	11.0

DEPARTMENT / DIVISION ORGANIZATIONAL CHART



DEPARTMENT / DIVISION PROFILE

The mission of this division is to operate and maintain the 15 million-gallon per day capacity water treatment facility located on Wakarusa Drive in West Lawrence. The division must also process drinking water in compliance with the Safe Water Drinking Act. The water treatment division includes the assistant director for water, operations supervisors, maintenance supervisor, plant operators and maintenance staff at both plants.

Significant Issues for 2005 - The increase in Personal Services for 2005 can be attributed to merit increases for eligible employees and increased costs for health care benefits as well as a 2% general wage adjustment and implementation of the Primary Pay Plan. Infrastructure improvements will include expansion of the Clinton Plant to begin late next year. Staff is working to begin design in 2004. Increases to maintenance contracts and operations supply needs are anticipated for Contractual Services and Commodities, respectively.

CURRENT YEAR ACCOMPLISHMENTS

- Treated and pumped a combined total of 1.22 billion gallons of water from January 1 to April 30, 2004 within compliance of the State and Federal regulations.
- Submitted an application to KDHE for SRF Funding for Phase II of the Clinton Plant Expansion.
- Working with KWO to resolve Clinton Reservoir Water Rights issue related to Tri-District application for additional water.
- Completed the installation of CCTV System at Clinton Plant and began revising Emergency Response Plan.
- Provided consultant with information for new rate study
- Working on resubmission of the Risk Management Plan required by EPA.

MAJOR GOALS AND OBJECTIVES FOR 2005

1. Provide safe, reliable drinking water and fire protection volume to the citizens of Lawrence at an affordable price and within compliance of the State and Federal regulations.
2. Clinton Plant Phase II Expansion will begin construction in 2005
3. Continue security improvements to maintain public confidence in the ability to safeguard the facilities and water quality.
4. Staff working with Water Quality Control Division to begin distribution and raw water testing for future regulations.

PERFORMANCE INDICATORS

	2003	2004	2005	Standard
	Actual	Estimated	Projected	
Technical Quality Complaints/day/1000	N/A	<1	<1	N/A
O & M Cost Ratio per 1,000 Gallons	\$0.66	\$0.65	\$0.72	N/A