

City of Lawrence
Transportation Commission Study Session
June 20, 2018 Minutes

MEMBERS PRESENT: Charlie Bryan, Mark Hurt, Steve Evans, Michele Dillon, John Ziegelmeyer, Donna Hultine, Kathryn Schartz

MEMBERS ABSENT: Erin Paden, Ron May

STAFF PRESENT: David Cronin, Public Works Department
Zach Baker, Public Works Department
Amanda Sahin, Public Works Department
Jon Marburger, Public Works Department
Ashley Meyers, Transportation Planner
Jasmin Moore, Sustainability Director

PUBLIC PRESENT: N/A

A complete video recording of the meeting is available on the City's website at <https://lawrenceks.org/boards/transportation-commission/>

1. How Lawrence Measures Up: STAR Community Rating System, Bicycle Friendly Community and Walk Friendly Community

Jasmin Moore presented on the STAR system and Ashley Meyers presented on the Bicycle Friendly and Walk Friendly Community ratings

Measuring Sustainability Progress: STAR Certification

Transportation Commission

June 20, 2018

Jasmin Moore

Sustainability Director

JaMoore@lawrenceks.org



City of Lawrence





SUSTAINABILITY: THE FOUR-WAY TEST

1. How does it impact ENVIRONMENTAL HEALTH?
2. How does it directly impact the WELL-BEING OF PEOPLE?
3. How does it impact relationships, effective government, social justice, and OVERALL LIVABILITY?
4. How does it impact the LOCAL ECONOMY and at what long and short term costs?

SUSTAINABILITY



Environmental
Health



Society



Local Economy



SUSTAINABLE COMMUNITY

- A sustainable community is one that is ***economically, environmentally, and socially healthy and resilient.***
- It meets challenges through **integrated solutions** rather than through fragmented approaches that meet one of those goals at the expense of the others.
- And it takes a **long-term perspective** – one that's focused on both the present and future, well beyond the next budget or election cycle.

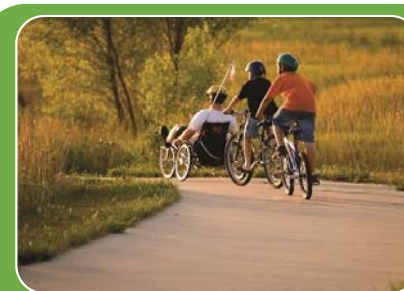
-Institute for Sustainable Communities



Sustainability in local government: a multi-pronged approach

- **Municipal Leadership**
- **Policy/Programs**
- **Community Engagement**





Energy efficiency & conservation

Alternative fleet fuels

Green buildings

Economic development

Local food systems

Transportation

Water

Waste reduction & recycling

Citizen engagement & education





GUIDING DOCUMENTS

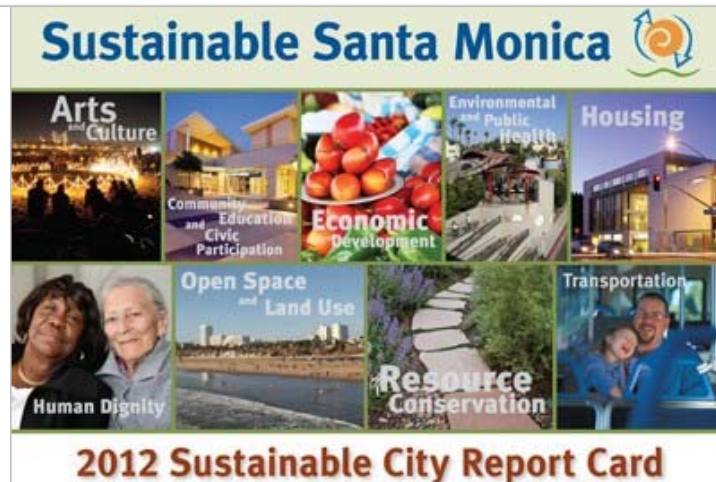
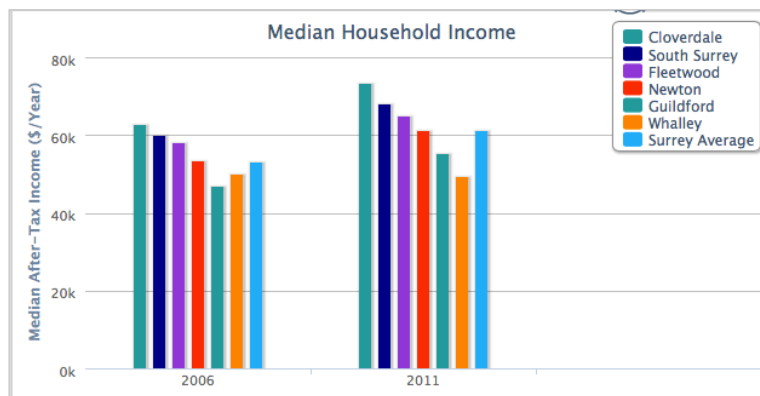
- City of Lawrence: Climate Protection Plan (2009)
- Greenhouse Gas Emissions Inventory (2005, 2012)
- Douglas County: County Sustainability Plan (2011)
- City of Lawrence reports from Peak Oil Task Force, Solid Waste Task Force, Bike/Ped Task Force
- City & County: Horizon 2020: Chapter 16 (2011)
- T2040 Transportation Plan
- Douglas County Food Systems Plan (2017)

ADVISORY BOARDS

- Sustainability Advisory Board
- Douglas County Food Policy Council



MEASURING SUSTAINABILITY



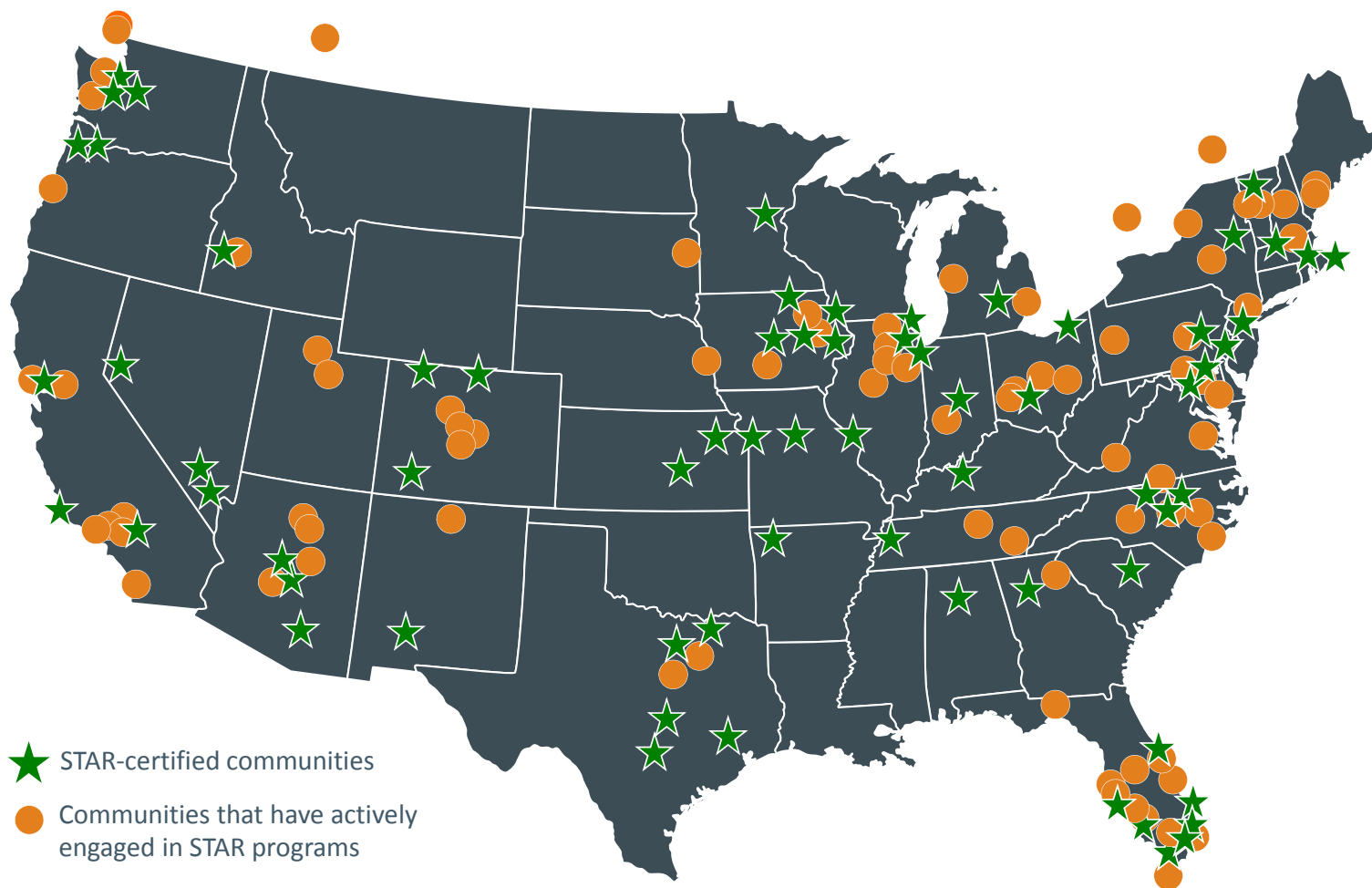


SUSTAINABILITY
TOOLS FOR
ASSESSING &
RATING COMMUNITIES



SET GOALS. MEASURE PROGRESS.
IMPROVE YOUR COMMUNITY.

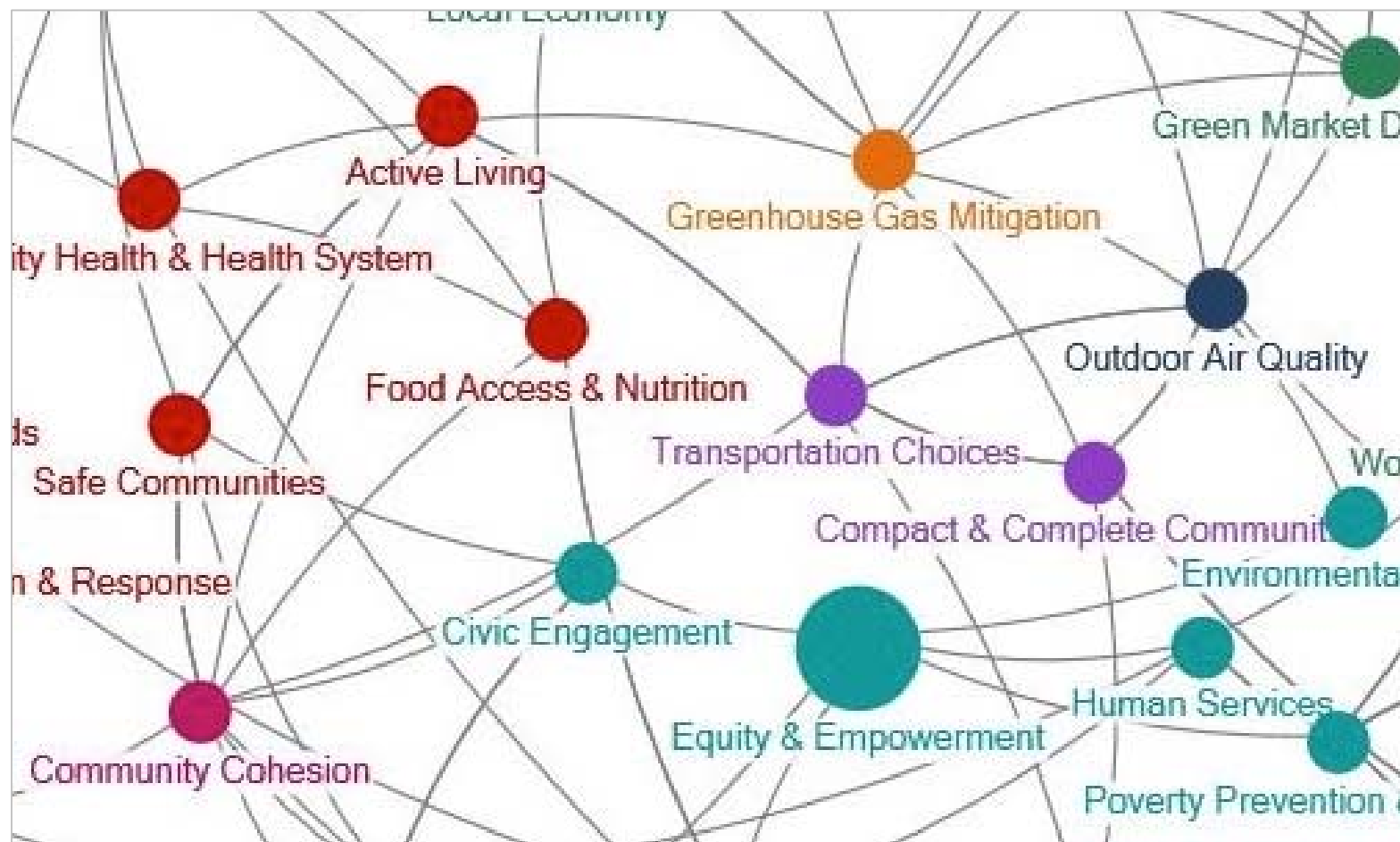
37 STATES + DC | 4 PROVINCES | 170 COMMUNITIES



STAR FRAMEWORK OF GOALS & OBJECTIVES

Built Environment	Climate & Energy	Economy & Jobs	Education, Arts, & Community	Equity & Empowerment	Health & Safety	Natural Systems
Ambient Noise & Light	Climate Adaptation	Business Retention & Development	Arts & Culture	Civic Engagement	Active Living	Green Infrastructure
Community Water Systems	Greenhouse Gas Mitigation	Green Market Development	Community Cohesion	Civil & Human Rights	Community Health	Biodiversity & Invasive Species
Compact & Complete Communities	Greening the Energy Supply	Local Economy	Educational Opportunity & Attainment	Environmental Justice	Emergency Management & Response	Natural Resource Protection
Housing Affordability	Energy Efficiency	Quality Jobs & Living Wages	Historic Preservation	Equitable Services & Access	Food Access & Nutrition	Outdoor Air Quality
Infill & Redevelopment	Water Efficiency	Targeted Industry Development	Social & Cultural Diversity	Human Services	Health Systems	Water in the Environment
Public Parkland	Local Government GHG & Resource Footprint	Workforce Readiness	Aging in the Community	Poverty Prevention & Alleviation	Hazard Mitigation	Working Lands
Transportation Choices	Waste Minimization				Safe Communities	

SUSTAINABILITY SYNERGIES







LAWRENCE LEADING THE WAY

We received over 95% of available points available in these 10 categories:

- ✓ Greenhouse Gas Mitigation
- ✓ Educational Opportunity & Attainment
- ✓ Emergency Prevention & Response
- ✓ Safe Communities
- ✓ Outdoor Air Quality
- ✓ Resource Efficient Public Infrastructure
- ✓ Public Spaces
- ✓ Business Retention & Development
- ✓ Resource Efficient Buildings
- ✓ Community Water Systems



AREAS FOR IMPROVEMENT

We received fewer than 10% of available points in these categories:

- ✓ Climate Adaptation
- ✓ Environmental Justice
- ✓ Invasive Species
- ✓ Quality Jobs & Living Wages



AREAS OF OPPORTUNITY

Housing Affordability-Housing and Transportation Costs:

- Analyze transit access & transportation costs for neighborhoods with housing affordable to low- and moderate-income households
- When new transit or other major infrastructure investments are planned, analyze the impact to housing affordability so that appropriate strategies can be developed to preserve and create long-term affordable housing



AREAS OF OPPORTUNITY

- Show that the average total driving cost is 15% or less of the regional typical household income
- Offer local government employees incentives to commute by modes other than single-occupancy vehicles
- Implement at least 2 types of focused enforcement programs to ensure pedestrian, bicycle, and motorist safety
- Establish or support a community-wide public bike share program



AREAS OF OPPORTUNITY

Greening the Energy Supply

- Establish partnerships between fleet managers, alternative fuel suppliers, and consumers to elevate alternative fuel options within the community
- Adopt a renewable energy or alternative fuel targets for locally owned facilities and vehicles
- Create incentive programs to support the development of renewable and alternative fuel infrastructure, such as electrical vehicle charging stations and small scale solar projects



AREAS OF OPPORTUNITY

Civic Engagement

- Adopt inclusive public engagement guidelines for local government agencies and departments

Equitable Access and Proximity

- Construct new facilities and infrastructure in locations that reduce existing disparities
- Publicize efforts to improve equitable access and proximity to priority foundational community assets and opportunities to contribute to decision-making and planning



AREAS OF OPPORTUNITY

Community Health & Health System

- Conduct *health impact assessments (HIAs)* on proposed infrastructure investments and development projects to increase positive health outcomes and minimize adverse impacts



AREAS OF OPPORTUNITY

Green Stormwater Infrastructure

- Upgrade public spaces and public buildings based upon locally-adopted or recognized best practices in green infrastructure. Where possible, create demonstration projects to enhance public support.

Outdoor Air Quality

- Improve traffic signal timing or upgrade intersections to relieve congestion



STAR Integration

STAR provides opportunity to support current community planning efforts:

- Comprehensive Plan re-write
- City Commission Strategic Planning & Metrics
- Community Health Plan
- Food System Plan
- T2040 Transportation Plan



FOR MORE INFORMATION:

www.lawrenceks.org/star

www.lawrenceks.org/sustainability

www.douglascountyks.org/depts/sustainability

www.starcommunities.org

Jasmin Moore

Sustainability Director

jamoore@lawrenceks.org



Bicycle Friendly Community

What is it?

The Bicycle Friendly Community program provides a roadmap to improving conditions for bicycling and guidance to help make your community's vision for a better, bikeable community a reality.

What are we?

Bronze Bicycle Friendly Community since 2004

Renewed

- 2006
- 2008
- 2012
- 2016



307



78



26



5

2012



How has the feedback changed?

on residents of pollution and noise, limiting greenhouse gases, and improving the quality of public spaces; **Reduce congestion** by shifting short trips (the majority of trips in cities) out of cars. This will also make cities more accessible for public transport, walking, essential car travel, emergency services, and deliveries; **Save lives** by creating safer conditions for bicyclists and as a direct consequence improve the safety of all other road users. **Research shows** that increasing the number of bicyclists on the street improves bicycle safety; **Increase opportunities** for residents of all ages to participate socially and economically in the community, regardless of income or ability. Greater choice of travel modes also increases independence, especially among **seniors** and **children**; **Boost the economy** by creating a community that is an attractive destination for new residents, tourists and businesses; **Enhance recreational opportunities**, especially for children, and further contribute to the quality of life in the community; **Save city funds** by increasing the efficient use of public space, reducing the need for costly new road infrastructure, preventing crashes, improving the health of the community, and increasing the use of public transport; **Enhance public safety and security** by increasing the number of "eyes on the street" and providing more options for movement in the event of emergencies, natural disasters, and major public events; **Improve the health and well being** of the population by promoting routine physical activity.

The key measures Lawrence should take to improve cycling in the community are:

- Expanding the bicycle and pedestrian manager's time focused on bike projects would help in scaling up your BFC efforts. Current work of the BPAC and TDM staff could be complemented by a staff person devoted to acquiring bike/ ped grants and making the community bicycle-friendly. See this report on the importance of Bicycle & Pedestrian program staff. http://www.bikeleague.org/resources/reports/pdfs/why_bike_ped_staff_april_2010.pdf
- Continue to expand the bike network and increase network connectivity through the use of bike lanes, bike tracks, shared lane arrows, signed routes and bicycle cut-throughs. Since arterial and collector roads are the backbone of every transportation network, it is essential to increase the number of wide shoulders or **bike lanes** along these roads to allow bicyclists of all skill levels to reach their destinations quickly and safely. On-street improvements coupled with the expansion of the off-street system will continue to increase use and improve safety. These improvements will also increase the effectiveness of encouragement efforts by providing a broader range of facility choices for users of various abilities and comfort levels.
- Ensure that bicycle-safety education is a routine part of public education and that schools and the surrounding neighborhoods are particularly safe and convenient for biking. Work with your Bicycle Advisory Committee and local bicycle advocates to develop and implement **Safe Routes to School programs** that emphasizes bicycling for elementary schools, middle schools and high schools. Strongly encourage all schools to participate.



LAWRENCE, KS

TOTAL POPULATION
91282
TOTAL AREA (sq. miles)
34.3

POPULATION DENSITY
2664.4

OF LOCAL BICYCLE FRIENDLY BUSINESSES 1
OF LOCAL BICYCLE FRIENDLY UNIVERSITIES 0

TO BUILDING BLOCKS OF A BICYCLE FRIENDLY COMMUNITY

	Average Silver	Lawrence
High Speed Roads with Bike Facilities	47%	5%
Total Bicycle Network Mileage to Total Road Network Mileage	51%	24%
Bicycle Education in Schools	GOOD	ACCEPTABLE
Share of Transportation Budget Spent on Bicycling	14%	6%
Bike Month and Bike to Work Events	VERY GOOD	AVERAGE
Active Bicycle Advocacy Group	YES	YES
Active Bicycle Advisory Committee	MEETS EVERY TWO MONTHS	MEETS AT LEAST MONTHLY
Bicycle-Friendly Laws & Ordinances	AVERAGE	GOOD
Bike Plan is Current and is Being Implemented	YES	YES
Bike Program Staff to Population	1 PER 89K	1 PER 33 K

CATEGORY SCORES

ENGINEERING <i>Bicycle network and connectivity</i>	4 /10
EDUCATION <i>Musical awareness and bicycling skills</i>	3 /10
ENCOURAGEMENT <i>Meets/reinforces bicycling culture</i>	4 /10
ENFORCEMENT <i>Promoting safety and protecting bicyclist's rights</i>	3 /10
EVALUATION & PLANNING <i>Setting targets and having a plan</i>	2 /10

KEY OUTCOMES

	Average Silver	Lawrence
RIDERSHIP <i>Percentage of Commuters who bike</i>	2.8%	1.3%
SAFETY MEASURES CRASHES <i>Crashes per 100 bicycle commuters</i>	498	474
SAFETY MEASURES FATALITIES <i>Fatalities per 100 bicycle commuters</i>	8	0



KEY STEPS TO SILVER

- » Congratulations on taking the first step to institutionalizing funding for improvements for people who walk and bike by creating a specific budget item for non-motorized improvements!
- » Lawrence has completed a number of projects that will eventually form the "Lawrence Loop," a 22-mile paved off-street path around the city. Continue efforts to complete the Loop and ensure that residents and visitors can safely access the loop and community destinations from the Loop.
- » Develop a design manual that meets current NACTO standards or adopt the NACTO Urban Bikeway Design Guide. This will make it easier for city staff to propose and implement bicycle facility designs that have been shown to improve conditions for people

who bike in other cities throughout the United States. Your application indicated that many traffic calming and bicycling-related designs found in the NACTO guide have not been implemented and implementing a greater variety of treatments may help create context-sensitive improvements for people walking and biking in Lawrence.

- » Increase the amount of staff time spent on improving conditions for people who bike and walk.
- » While the "Lawrence Loop" is a transformative community asset it should not detract from creating a connected network that helps people safely access transit schools

LEARN MORE » WWW.BIKELEAGUE.ORG/COMMUNITIES SUPPORTED BY **planet bike** AND LEAGUE MEMBERS

2016

2016 Feedback

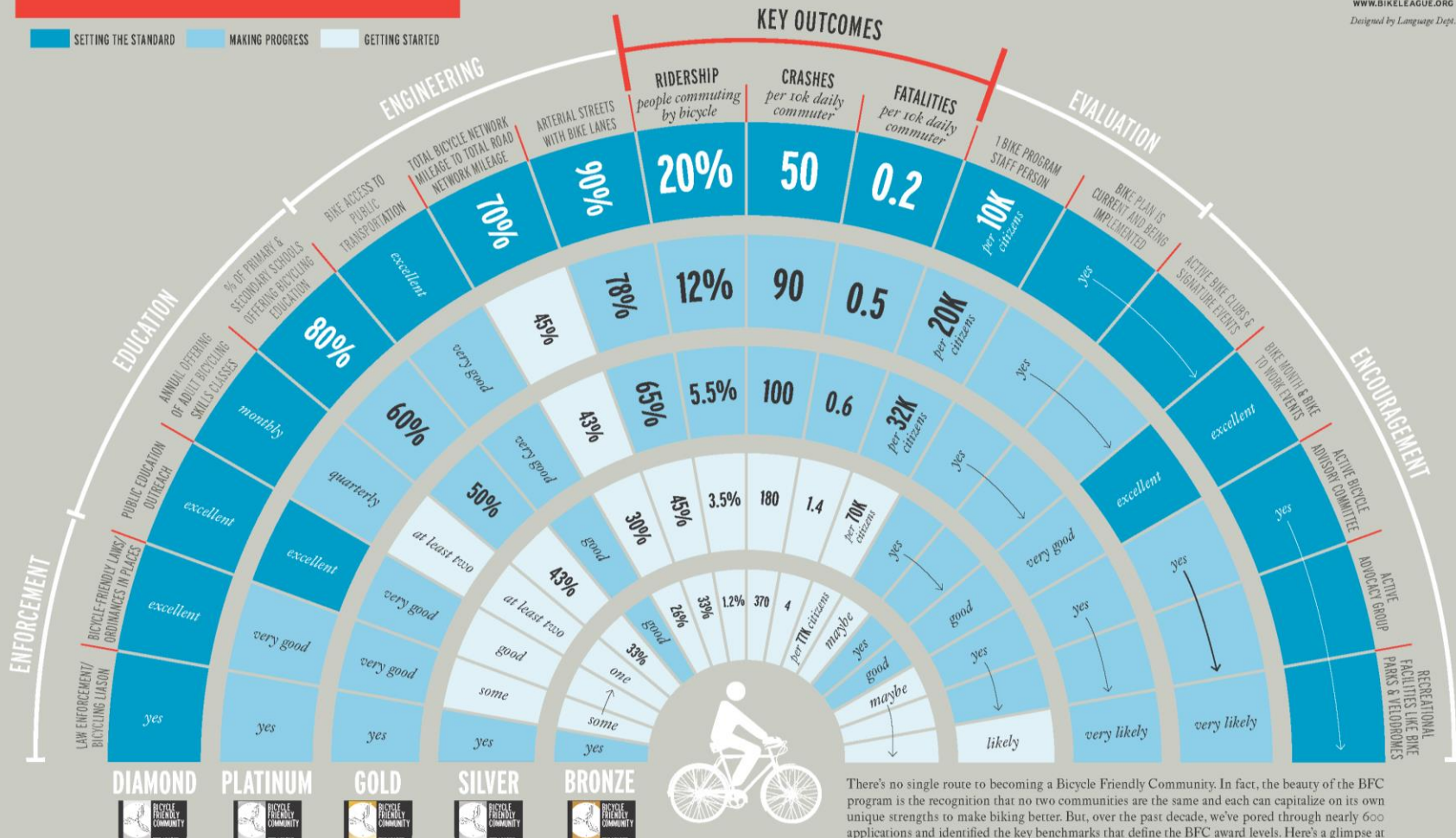
ENGINEERING Bicycle network & connectivity	4/10
EDUCATION Motorist awareness & bicycling skills	3/10
ENCOURAGEMENT Mainstreaming bicycling culture	4/10
ENFORCEMENT Promoting safety & protecting bicyclists' rights	3/10
EVALUATION & PLANNING Setting targets & having a plan	2/10

2016 Feedback

- Continue to **complete** the Lawrence Loop and ensure people can **safely access** the loop and community destinations **from the loop**.
- **Increase staff time** on improving conditions for people who bike and walk.
- Continue to create a **connected network** that helps people **safely access transit and schools**.

THE BUILDING BLOCKS OF A BICYCLE FRIENDLY COMMUNITY

produced by
THE LEAGUE
 OF AMERICAN BICYCLISTS
 WWW.BIKELEAGUE.ORG
 Designed by Language Dept.





Walk Friendly

What is it?

Walk Friendly Communities is a national recognition program developed to encourage towns and cities across the U.S. to establish or recommit to a high priority for supporting safer walking environments. The WFC program recognizes communities that are working to improve a wide range of conditions related to walking, including safety, mobility, access, and comfort.

What are we?

Silver Walk Friendly Community since 2017



33



21



15



2

2017 Feedback

STATUS OF WALKING	Walk Friendly
PLANNING	Walk Friendly
EDUCATION/ ENCOURAGEMENT	On the Right Track
ENGINEERING	Walk Friendly
ENFORCEMENT	On the Right Track
EVALUATION	Needs Improvement

2017 Feedback

- **Complete more Road Safety Assessments, Expand to automated counters (Evaluation)**
- **Formalize communication between law enforcement, traffic engineering, and planners (Enforcement)**
- **Consider Right Turn on Red restrictions (Engineering)**
- **Implement pedestrian wayfinding and host an Open Streets event (Education/Encouragement)**
- **Update the ADA Transition Plan (Planning)**

**How do we
improve?**

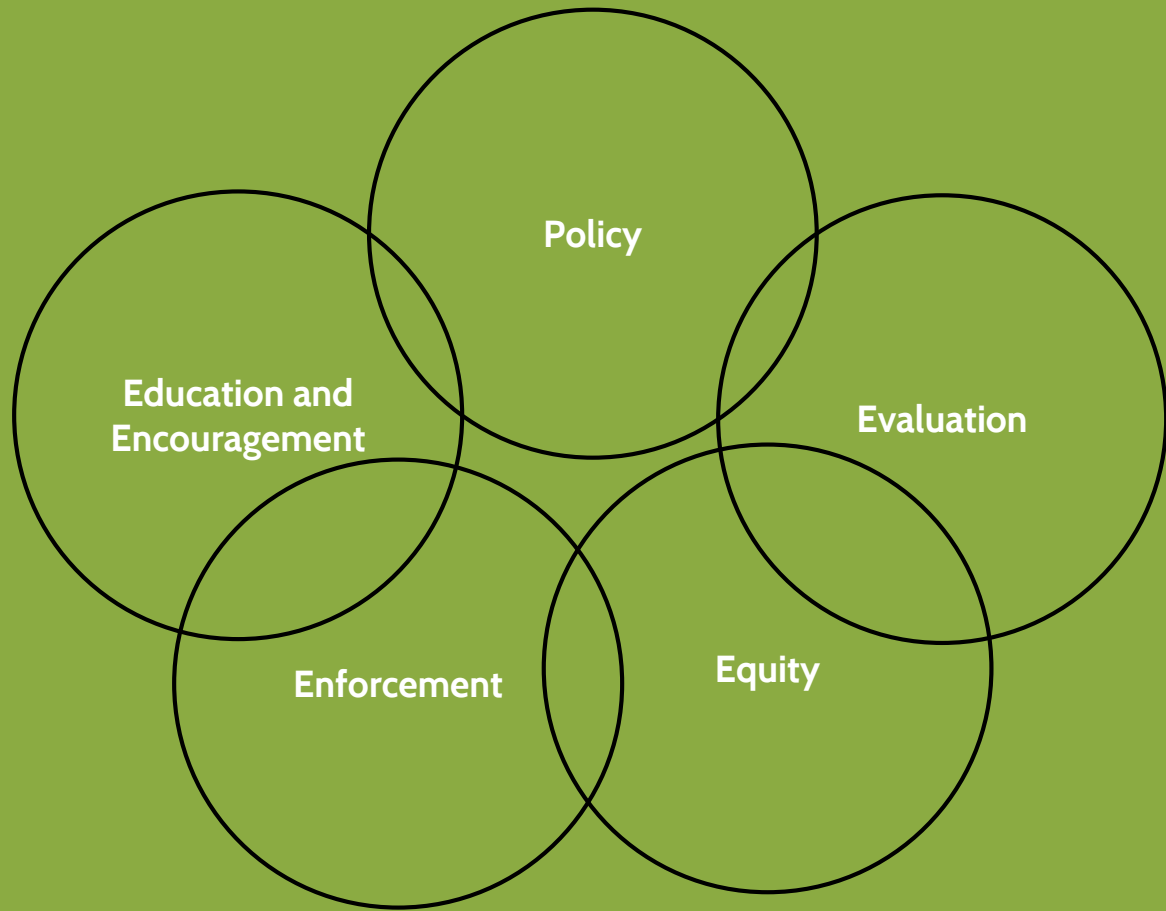
**More than bike
lanes/sidewalks:
Fostering
bicycle/walking
culture**

Barriers

Route-finding
Locating Parking
End of Trip
Weather



Addressing barriers



Education and Encouragement

Education and Encouragement

National Bike Challenge & Ride with Commissioners

NATIONAL BIKE CHALLENGE DOUGLAS



2-4m residents category

May 2018

NAME	TRIPS	MILES	TOTAL RIDERS
Kansas	4,435	72,748	255
Utah	4,743	62,988	306
Arkansas	4,594	56,025	276
Iowa	4,244	50,937	278
Connecticut	2,287	46,449	176
New Mexico	1,876	21,810	100
Nevada	1,231	17,447	73
Oklahoma	719	10,939	55
Mississippi	405	9,995	31

Kansas won the 2-4 million resident category!

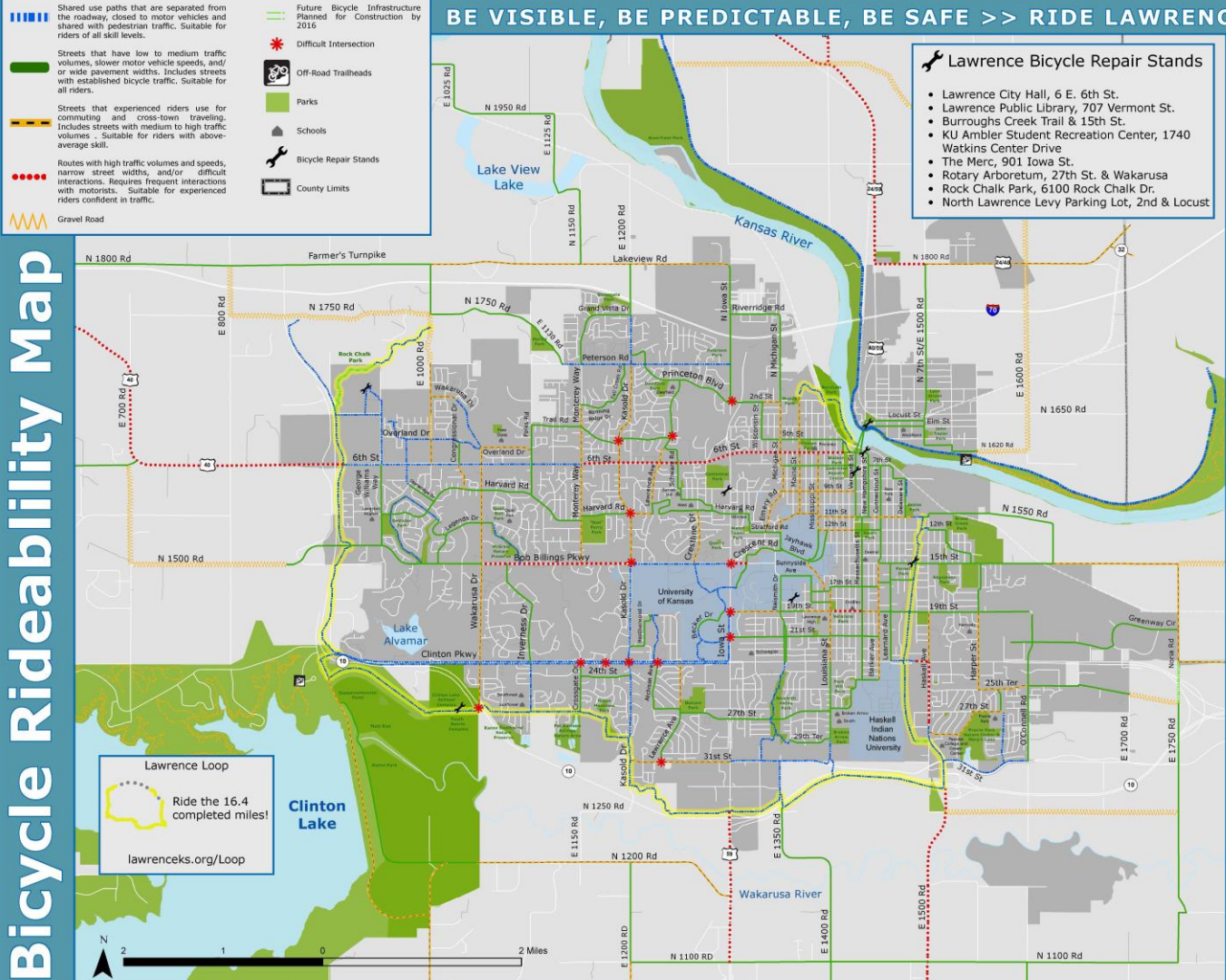


2018 Ride with Commissioners

Education and Encouragement

Route-finding guides

Bicycle Rideability Map



Education and Encouragement

Confident commuter class/ Walking school bus

Take advantage of all the benefits of commuting by bicycle

CONFIDENT, CAPABLE, COMMUTERS

taught by the League of American Bicyclists

With instruction from LAB certified instructors, the *Confident, Capable, Commuters* course is designed to be beneficial to all levels of riders. It will teach the skills needed to safely use a bike as a form of transportation.

Cyclists will learn:

- Riding Safely in Traffic
- Basic Bike Maintenance
- Group Riding Skills

OPEN TO ALL LEVELS AND TYPES OF CYCLISTS

Participants must provide their own bicycle and helmet

UPCOMING CLASSES:

April 12-16

6-9 p.m. Tuesday | Thursday

9 a.m. - 1 p.m. Saturday

May 17-21

6-9 p.m. Tuesday | Thursday

9 a.m. - 1 p.m. Saturday

Cost is \$20 per class/person
Pre-Registration is required.



City of Lawrence
PARKS AND RECREATION

For More Information:

Stephen Mason, Recreation Programmer
smason@lawrenceks.org | (785) 832-7950
East Lawrence Recreation Center

- Help students overcome barriers
- Feel more confident



Graphic by Sullivan School District

Education and Encouragement

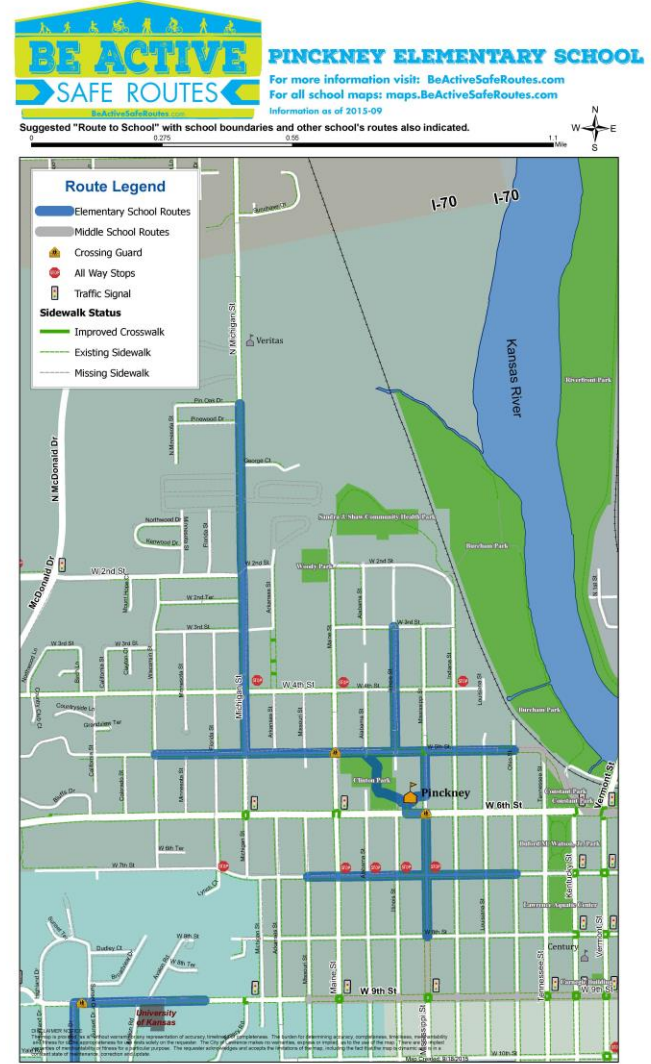
Safe Routes to School



Photo by Richard Gwin



**BIKE TO
SCHOOL DAY**
WEDNESDAY, MAY 4



Education and Encouragement

Open Streets events





Equity

Equity

Lawrence Unchained Bicycle Coop

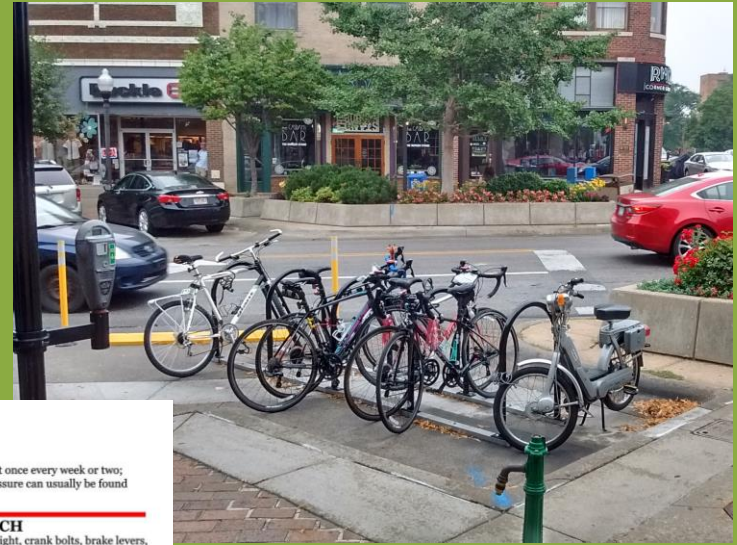






Policy

Policy

End of trip facilities




City of Lawrence



Repair stand makes it easier for you to work on your bike.
Air pump allows you to inflate your tires.
Provided tools allow you to do basic maintenance.

AIR PUMP
Inflate tires at least once every week or two; recommended pressure can usually be found on tire's sidewall.

ALLEN WRENCH
Adjust seatpost height, crank bolts, brake levers, shifters, derailleurs, brake cables, shift cables, brake calipers, derailleur pulleys, saddles, stems, and handlebars.

TIRE LEVERS
For removing a tight tire off the wheel slip this tool under the tire bead and lever back against the wheel.

PHILLIPS/FLAT-HEAD
Install accessories, like lights, reflectors and bells and adjust components, like derailleurs and brakes.

WRENCHES
Tighten bolt-on wheels secured with 15 mm nuts and pedals attached with 15 mm flats.
Tighten fixing bolts for shift and brake cables, brakecalipers, and front derailleurs.

TORX WRENCH
Tighten bolts that secure disc-brake rotors to wheel hubs.



Policy

Design Standards & Requirements

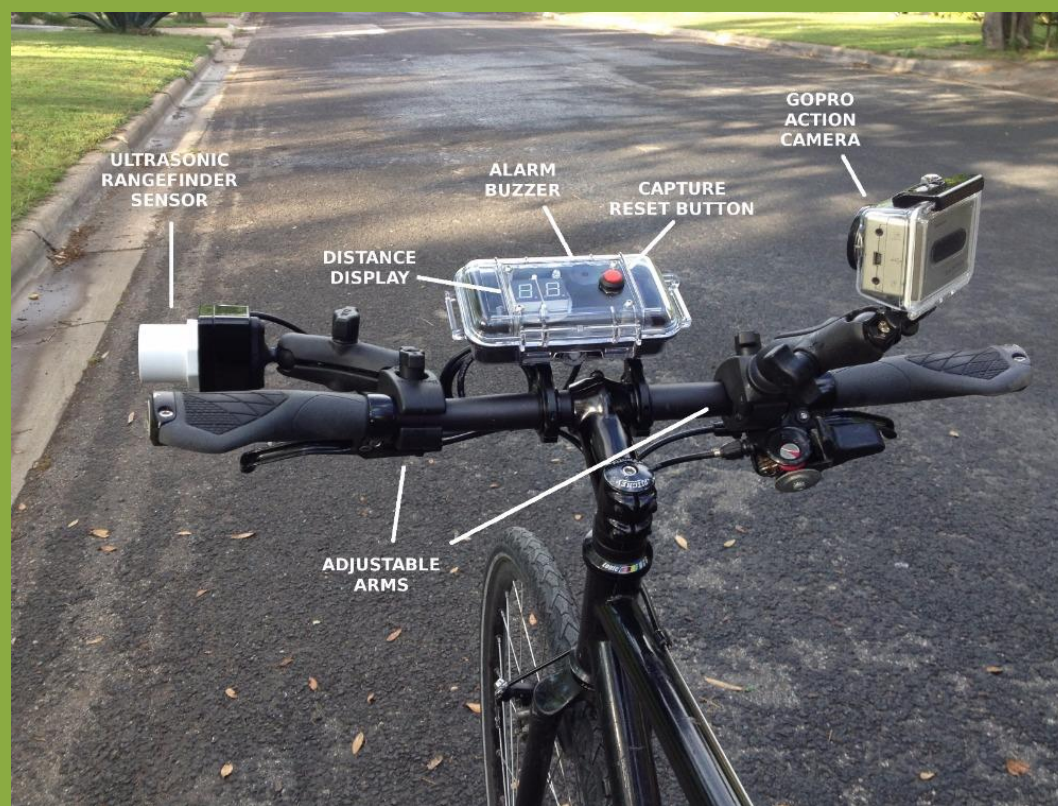




Enforcement

Enforcement

3-foot passing





Evaluation

Evaluation

Bicycle and pedestrian counts/survey



LAWRENCE - DOUGLAS COUNTY

MPO

METROPOLITAN PLANNING ORGANIZATION



Volunteer for the Annual Bicycle & Pedestrian Count



Help us count during the following times:

Wednesday, September 6th: 10am-12pm, 5-7pm

Thursday, September 7th: 10am-12pm, 5-7pm

Saturday, September 9th: 12pm-2pm

Rain Dates:

Wednesday, September 13th: 10am-12pm, 5-7pm

Saturday, September 16th: 12pm-2pm

Data collected on bicycling and walking will assist with estimating usage and demand for bicycle and pedestrian facilities. The counts also track the region's use of non-motorized transportation, strengthen grant applications to leverage additional federal funding for bicycle and pedestrian projects, and help determine the location of future investments.

* A short 4 minute online training video is required.

Questions? 785-832-3165 mpo@lawrenceks.org

Sign Up! www.lawrenceks.org/mpo/volunteer

**CASE
STUDY:
Before/After**

**City of
Lawrence &
KU
12th Street
Lighted
Pathway**



**CASE
STUDY:
Before/After**

**City of
Lawrence &
KU
12th Street
Lighted
Pathway**

5 times
more
Trips

**Between 9-11pm



Development of
bicycle/walking
culture is not
dependent on
only
roadway
improvements



Questions?

Jessica Mortinger

jmortinger@lawrenceks.org

Ashley Myers

amyers@lawrenceks.org

Bike Plan Survey

www.lawrenceks.org/mpo/tellus

Transportation Commission Study Session

June 20, 2018

Name	Initials
Members	
Charlie Bryan Lawrence DGCO Health Dept. Representative	CWB
Donna Hultine University of Kansas	dh
Kathryn Schartz Multi-Modal Transportation / Planning Eng Rep	KSS
Mark Hurt PTAC representative	MA
Michele Dillon Pedestrian Representative	MD
Steve Evans Planning/Engineering Field Representative	SE
Erin Paden Bicyclist Representative	
John Ziegelmeyer Local Business Representative	JZ
Ron May USD-497	
City Staff	
David Cronin City Engineer	DC
Jessica Mortinger Senior Transportation Planner	
Ashley Meyer Transportation Planner	AM
Amanda Sahin Transportation Engineer	AS
Zach Baker Project Engineer	ZB
Jon Marburger Project Engineer	JPM