

OUTDOOR • DOWNTOWN  
**SCULPTURE**  
**EXHIBITION** **21**

LAWRENCE, KANSAS

[lawrenceartscommission.org](http://lawrenceartscommission.org)

## **The Lawrence Arts Commission welcomes you to the 21st annual Outdoor Downtown Sculpture Exhibition**

Downtown Lawrence is a valuable part of our community. One way our Downtown remains remarkable is through the infusion of art.

I am pleased to introduce the 2008 Outdoor Downtown Sculpture Exhibition and its continued contribution to the uniqueness of our Downtown. Each year, the Lawrence streetscape evolves with the sculptures.

From enhancing the streetscape to creating an experience for people, art can tell an important story, share a piece of a culture and bring people together to appreciate the talent of an artist. Art makes an impact on many levels.

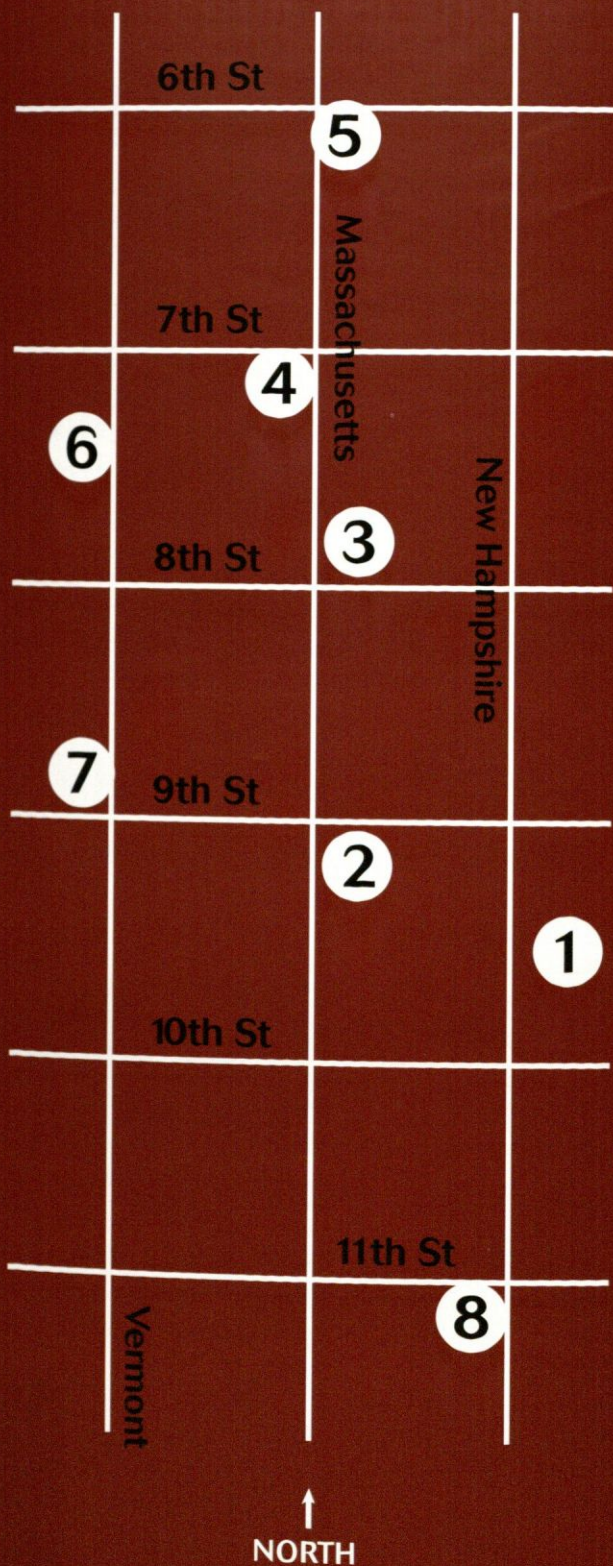
Unique this year is the number of nationally and internationally accomplished artists exhibited and living here in Lawrence. A great way to appreciate our Downtown is with a walking tour of the annual exhibition. I invite you and your family and friends to head Downtown and take a few minutes to appreciate the talent we have on display.

On behalf of the entire City Commission, I also would like to give special thanks to the Lawrence Arts Commission and the Lawrence Parks and Recreation Department for their continued dedication to the sculpture exhibition.

— *Mayor Michael S. Dever*



# SCULPTURE LOCATIONS





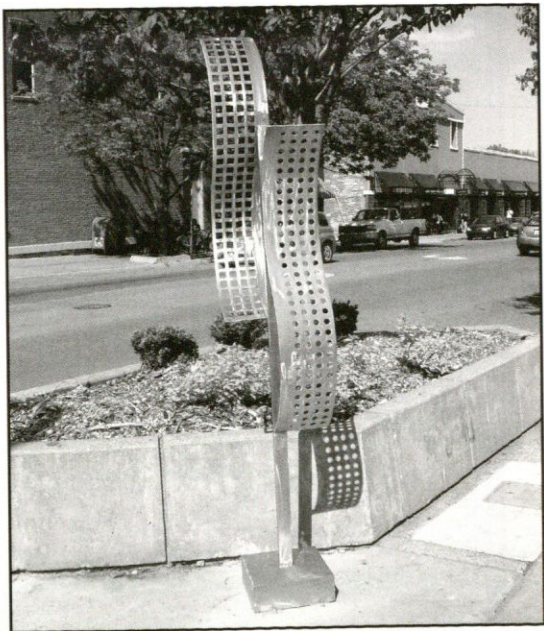
1

**"The Queen of the Urban Sea"**  
**Rebecca Davis**  
**Phoenix, AZ**

"The 'Queen' started out as an assignment involving the creation of a mythical creature for a sculpture class. What made it fun and challenging for me was the utilization of found objects and the attempt to create beauty from trash. I am truly impressed by the art from tribal Africa and other less 'developed' countries. 'Going green' is not a catchy new slogan to an impoverished country or an ongoing crusade against waste and pollution. It's a way of life. Being capable of producing utilitarian objects or artwork from refuse is an art in itself. My queen of the imagined undersea realm is an amalgamation of used car parts, cedar decking, baling wire, and rebar. Old welding projects and blackboards from a local community college retrieved from a dumpster contributed substantially to the completed form. Recycling in whatever form it takes is not only essential, it's fun!"

Rebecca Davis, who lives in Phoenix, AZ, completed a bachelor's of fine arts in sculpture at the University of Kansas. She also has a nursing degree.





2

## **"Double Wave"**

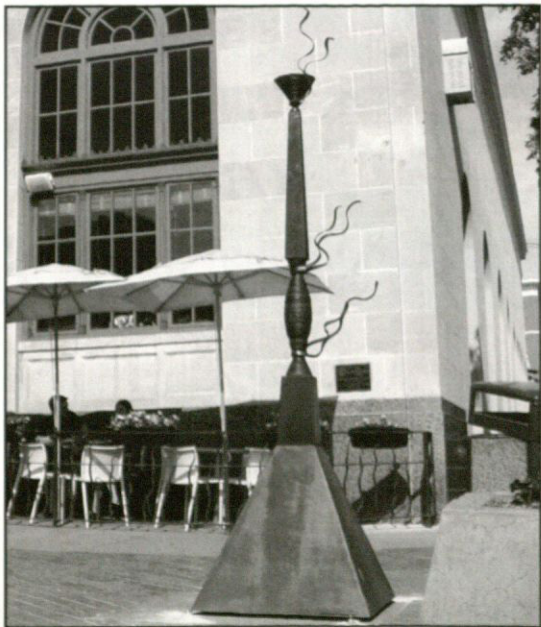
**Mark Baker**

**Lafayette, IN**

**[www.markbakerdesign.com](http://www.markbakerdesign.com)**

"'Double Wave' is all about subtle oppositions. Initially, from a distance, the viewer embraces the flowing quality of the wide curves made from the perforated sheets of stainless steel against the rigid upright. Next, the theme is continued within the small holes in each wave; square cut-outs on one side, circle cut-outs on the other.

"My current studio is in Cedar Rapids, IA. At Cornell College, I immersed myself in art, studying both art history and advanced studio techniques. For a number of years now, the majority of my professional artistic endeavors have been explorations in three-dimensional metals, most notably freestanding, hanging and installation sculpture. My three-dimensional work has further expanded my outlets for creativity while allowing me to thoughtfully respond to both the art world and the external world in which I interact with a handful of gallery and civic exhibitions across Iowa, Illinois and Indiana. The time I've spent working three-dimensionally has proven to be very rewarding."



**3**

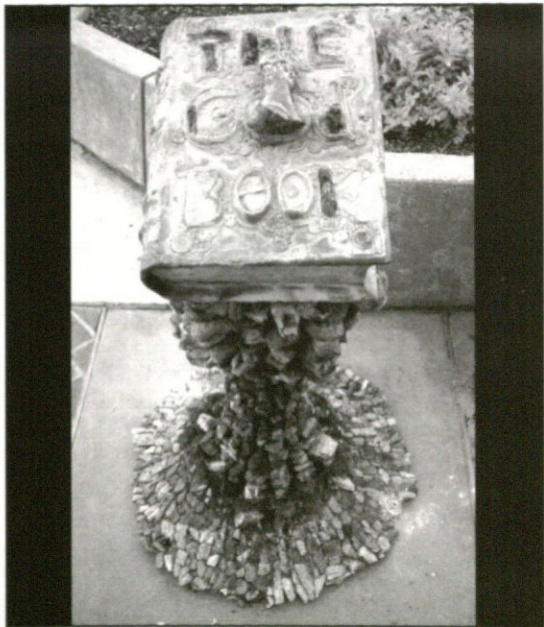
**"Time Marker"**

**Thomas Lingeman**

**Perrysburg, OH**

"I have always been enthralled and inspired by ritual icons, funerary vessels and the mystery embodied in monumental sculptural objects, which, like 'standing stones,' by their very permanence on the landscape mark time and space for us. Almost all of my previous work in cast and fabricated metal is, at least in part, inspired by this interest. Within the past few years I have generated a body of vertical freestanding sculpture that is an extension of this work, reflecting my personal and long-held interest in the monuments of the American rural cemetery."

Sculptor Tom Lingeman works primarily in cast bronze and welded steel. He received his bachelor's degree in art education from Ball State University in 1973 and a master's from Southern Illinois University at Carbondale in 1979. He joined the faculty of the University of Toledo to teach sculpture at the Toledo Museum of Art in 1979 and continues today as a sculptor and professor of art. His work is included in private and public collections and he has exhibited in Scotland, Spain and Hungary.



4

**"Castle Rock"**

**Alan Detrich**

**Lawrence, KS**

**[www.spearofjesus.com](http://www.spearofjesus.com)**

"The objects I create from 65-million-year-old fragmented dinosaur fossil bone and other materials explore connections between time, origins, and spirituality."

A mostly retired fossil hunter, Alan Detrich was born and raised in Great Bend, KS. Trained as a sculptor, he specialized in bronze casting and received a master's in fine arts from Wichita State University. He then ventured into the oil and gas business, spending the next 16 years as owner/operator of Detrich Oil Co. in Barton County, KS. He became serious about hunting dinosaur in 1986 and has discovered many interesting and rare species of dinosaur. His greatest discovery was a nearly complete T-rex found in South Dakota.

Alan is known for his unique skills in fossil preparation, receiving numerous awards for his spectacular 3-D presentations. His discoveries have been placed in important collections all over the globe, including museums of natural history in Vienna, Austria; Belfast, Northern Ireland; and Seoul, South Korea; the National Museum in Tokyo; and the University of Kansas, which added a rare fish-within-a-fish to its Natural History Museum collection.





**5**

**"The Guardian"**  
**Jan Gaumnitz**  
**Lawrence, KS**

"The idea for the design of 'The Guardian' began with a small model in clay of a Viking as a guardian figure. For the 8-foot version, stainless steel was chosen for its strength as well as possibilities for a beautiful finish. The vertical upright pieces symbolize strong and sturdy legs, braced for action. The horizontal forms are strong, active arms brandishing a sword to protect family and community. The top form indicates the head raised to survey his vicinity and position."

Jan Gaumnitz was born in New Ulm, MN, spending the first seven years of her life on a farm. There she developed her enduring love of the outdoors which has been a major influence on her life and art. More formal art training began when the family moved to Madison, WI., where she lived until graduating from the University of Wisconsin with a degree in art education. After spending a year in Denver teaching, two years in Madison teaching, and four years in California, Jan moved to Lawrence where she, her husband and four children have lived to the present. The focus of her life, besides family, has been working in her studio, teaching and exhibiting in the United States and internationally.





6

### **"Retraction Device"**

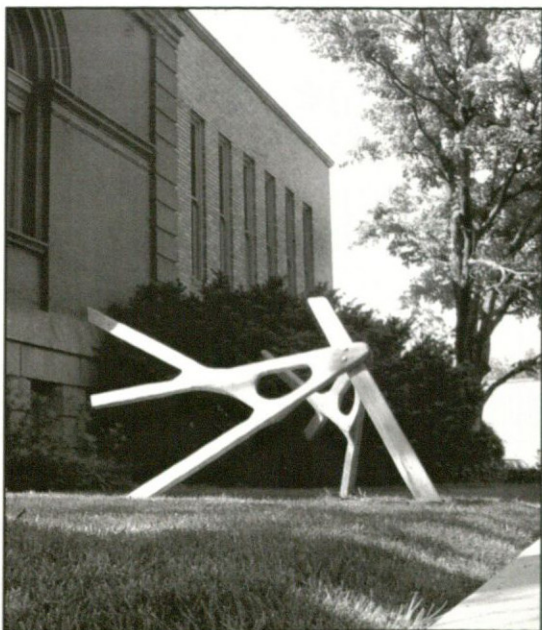
**Matt Moyer**

**Columbia, MO**

**[mattmoyerdesign.com](http://mattmoyerdesign.com)**

"My work, a portrayal of fictitious distribution systems, engages the viewer in a dialogue regarding our reliance on machines but our disregard for the people who engineered them and use them. In each sculpture, movement becomes the focus. Each work represents a relationship between a 'machine' and the objects that it produces."

Matt Moyer is currently an MFA candidate at the University of Missouri in ceramics and public sculpture. Matt received a bachelor's degree from Illinois State University and pursued studies at Southern Illinois University in Edwardsville and at the University of Iowa. While at the University of Iowa Matt accepted a position of artist-in-residence at the Herbert Hoover National Historic Site and Library. During his first year at Missouri, he accepted a one-semester position as artist-in-residence at the Tainan National University of the Arts School of Applied Arts in Taiwan. He is in his final year at the University of Missouri and expects to graduate in December 2008.



7

### **"Conventional Apparatus"**

**J. Karl Lipscomb**

**Pittsburg, KS**

"Making a piece addressing violence and aggression was the inspiration for 'Conventional Apparatus.' Without using literal references, the hard geometric angles of the oak beams and the use of industrial hardware combine to express techniques of forcible persuasion. Also, there are subtle aspects that imply coercion, whether it is for military use, national security or even some type of hostile domestic abuse. In any case, the apparatus and the techniques used with it eventually become relics and are hopefully discarded along with the mentality that produced the device in the first place.

"The worn and smoothed edges of the wood and hardware on this sculpture imply many years of use, the rust, patinas and weathered parts clearly indicate that it is outdated and is no longer considered useful."

Originally from Springfield, MO, Karl Lipscomb now lives in Pittsburg, KS. He specializes in painting, sculpture and ceramic art, often combining all three into one piece.





8

### **"The Conversation"**

**Robert Garcia**

**Toledo, OH**

"In 'The Conversation,' I hope to convey a panoramic, expressive gesture of not only wind but all earth forces through an image of a vortex. The vortex-like form is divided so that the viewer may walk into its environment and perhaps converse with another person, possibly hearing the reverberation of their voices. It is also a symbol for the constant stream of communication, so vital in life that it seems to be our main objective in living.

"In these works I use steel which I roll, cut, grind and weld but after applying a rust preventive agent and coats of durable paint, only hints of the metal are seen. Through the strength of metal I bring the aspects of painting and sculpture out of the gallery and off the walls for more accessible public viewing."

During nearly 40 years of art involvement and teaching, Garcia has exhibited and received grants and commissions. His work is included in corporate and private collections regionally and nationally. Through a residency program in 2006 he produced his first international steel sculpture in Toledo, Spain.

# OUTDOOR • DOWNTOWN **SCULPTURE EXHIBITION**<sup>21</sup>

LAWRENCE, KANSAS

**Juror:** Bill Buchen, with his wife, Mary, has developed a methodology for working with public space that draws upon environmental phenomena, solar energy, science, sound and physics to create comprehensive art environments that inform the public's consciousness of the natural environment. Combining innovation and elegance, their work inspires the public to experience space in constantly changing paradigms, referring to the future of public space. He has been a composer of original works and a percussionist specializing in new and world music for the past 20 years. He has taken drawing classes at The Cooper Union in New York and studied music in the United States, Brazil and India.

**Lawrence City Commission**

Michael S. Dever, Mayor  
Robert Chestnut, Vice-Mayor  
Mike Amyx  
Sue Hack  
Dennis "Boog" Highberger

**City Manager:** Dave Corliss

**Lawrence Arts Commission**

John Reeves, Chair  
Donna Griffin  
Elizabeth Hatchett  
Matthew Herren  
Lora Jost  
Amy Kelly  
Dave Loewenstein  
Jane Pennington  
Evie Rapport  
Leslie vonHolten

**City Liaison:** Michael Tubbs

**Sponsored by**

Lawrence Arts Commission  
Lawrence Convention and Visitors Bureau  
City of Lawrence

If interested in purchasing a sculpture,  
contact the City Managers Office  
(785) 832-3400, [lawrenceks.org/cmo](http://lawrenceks.org/cmo)

The Outdoor Downtown Sculpture Exhibition  
was founded in 1987 by Jim Patti  
and the Kansas Sculptors Association.