

OUTDOOR-DOWNTOWN

**SCULPTURE
EXHIBITION**

Lawrence : Kansas

The Lawrence Arts Commission
welcomes you to the 15th Annual
Downtown Lawrence
Outdoor Sculpture Exhibition

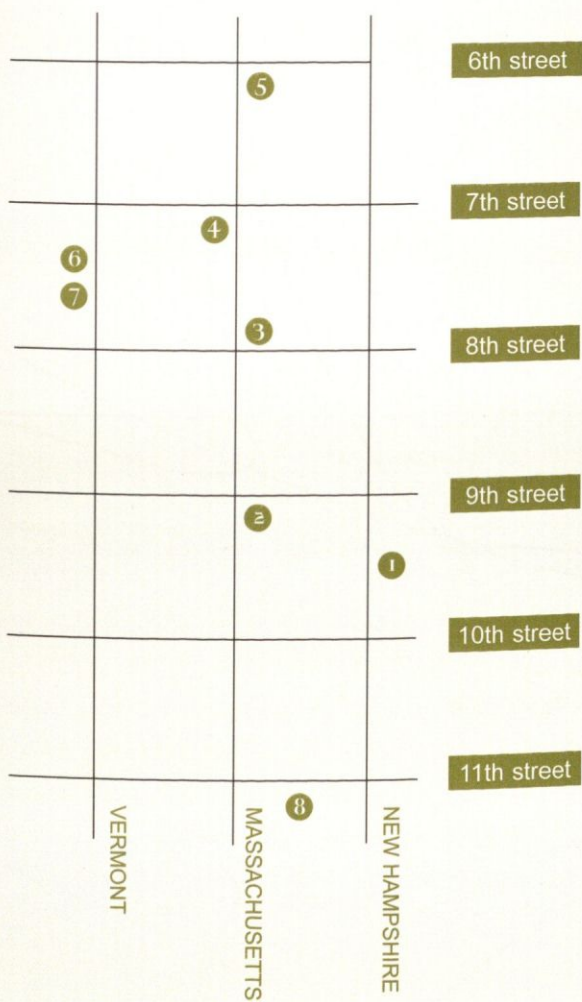
The exhibition features eight original works
from artists across the United States.

This year's exhibition was juried by Dana
Self, Curator, Kemper Museum of
Contemporary Art, Kansas City, Missouri.

The show is organized to enhance the under-
standing and appreciation of sculpture. This
brochure is intended to assist a viewer's
enjoyment of a self-guided tour of the exhibition.

The Lawrence Arts Commission appreciates
the efforts of many organizations and
individuals that assist with this annual exhibition
and especially wants to recognize the
Lawrence Convention and Visitors Bureau,
Jim Patti and the City of Lawrence for their
many contributions.

exhibition map



North



"Alchemy"

Willie Ray Parish

La Union, New Mexico

Media: Painted Steel (Wind Driven)

Ray was born in Tupelo, Mississippi and earned his BFA from Ole Miss in 1970, and an MFA at Otis Art Institute of Los Angeles in 1978. He has taught sculpture at Ball State University in Muncie, Indiana and the University of Texas at El Paso. He is currently the Chairman of the Art Department at UTEP, where he has been on the faculty for eighteen years. He is the founder of the Border Art Residency, a foundation supporting art and artists in La Union, New Mexico.

When asked about his sculpture, Ray said:

"The red form at the top is equipped with sealed bearings and will turn in the wind, but the movable part weighs 1,000 pounds, so it takes a wind of approximately twelve knots or greater to spin it. One end of the movable form is lead coated, as the form turns to expose the other end, it is gold. Hence the title "Alchemy". The spinning turns lead into gold."



"Wind Totem"

Marie Camille Truscott

Cedar Falls, Iowa

Media: Stainless Steel

2

Marie is "influenced by Lelooska, who, in the heritage of the northwest coast natives, carved totems of wood that tell stories of the clans and nations, animals and nature." At forty-three, she had been a long time artist, painter, elementary educator, leader of statewide workshops on equity and multicultural education and illustrated children's books. It was then that she decided to become a sculptor.

She now studies at the University of Northern Iowa in Cedar Falls.

Now I am living here, loving the endless, rolling horizon of this land. I rest in the remnants of the prairie.



"Whirlwind"

Lynn Olson

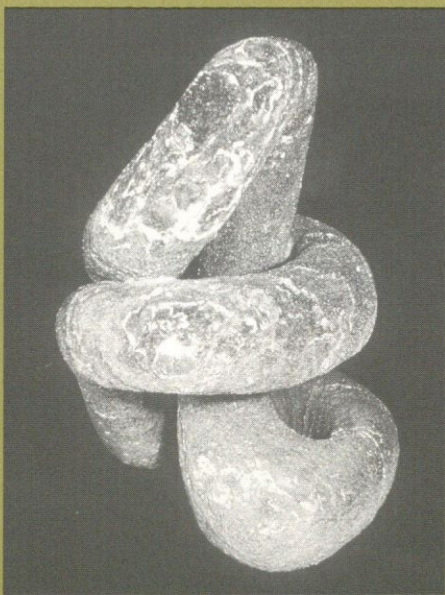
Valparaiso, Indiana

Media: Cement, Steel

3

Lynn is a sculptor, painter and writer who has developed techniques for making cement into a practical direct modeling medium to build sculptures of any size and complexity by applying fiber-cement and steel reinforcement directly without molds. He outlines these direct techniques in his book, *Sculpting with Cement*, which has been recommended by the American Library Association and by *Library Journal*.

Examples of Lynn's sculptures may be viewed at: www.IRAAregistry.org (IRAA#OL-4-19-1952-1) or www.ohioonlinearts.org



"Inside Out"

Alan Jay Glenn

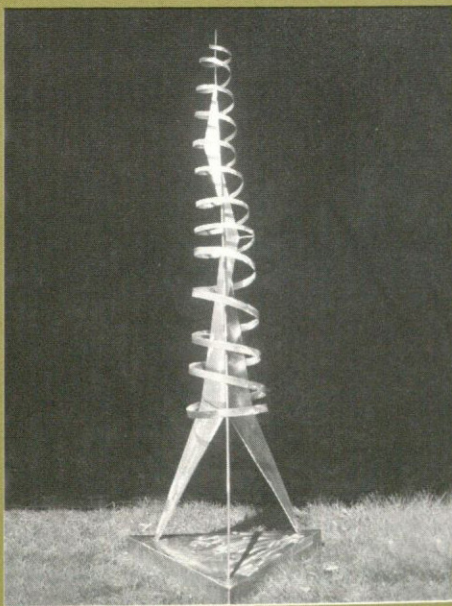
Silver Spring, Maryland

Media: Featherstone (carved)

4

"As we become a more technologically dependent society, we also become more disconnected from our relationship with our natural world. I try with my organically shaped sculpture to reconnect us to the beautiful calm that can readily be found in a garden, a forest, or any other natural setting.

The curves, twists, and holes in my stone sculpture remind me of normally occurring botanical formations found in sprouts, vines leaves, plants and trees. My large abstract pieces are well placed in any garden or natural setting. Indoors my work evokes the spirit of nature and calm, while also seeming quite contorted. It is this balance of man-made art in an organic style that I strive for in an abstract work, thus reconnecting us to the natural world all around us."



"Rocket"

Tom Newport

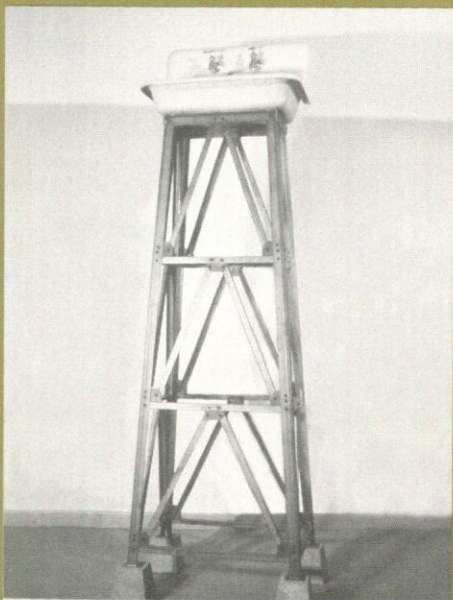
Cedar Rapids, Iowa

Media: Stainless Steel

5

Tom has lived in Iowa all his life. He received a degree in art from Cornell College and has been pursuing sculpture and metalsmithing ever since. His diverse knowledge of metal-smithing and stone carving techniques have allowed him to mix materials like stainless steel, titanium, neon and bronze together in many successful sculptures.

Tom says of "Rocket": "Shooting off into space with an angled trajectory. The rocket darts and flashes through space. It spirals through space to new uncharted destinations."



"Water Tower #1"

Mark Cowardin

Baldwin, Kansas

Media: Steel, Cast Iron Sink and Concrete

6

Mark received his BFA from the University of Kansas and an MFA in sculpture from the University of Arizona at Tucson. He is currently a member of the faculty at Johnson County Community College. Mark has shown his work nationally and in the summer of 2002 he will be an artist in residence at the Kohler Arts/Industry program in Kohler, Wisconsin.

"Water Tower #1" is a "light-hearted illustration of the source and destination of life sustaining water. A play on words, the sculpture consists of a cast iron sink elevated to the top of a steel tower. The viewer is faced with the separation and disconnection between the plumbing fixture and the source of the necessary plumbing."



"Stainless Steel #1"

Kermit Gilbert

Painted Post, New York

Media: Stainless Steel

7

Kermit is originally from Kansas and attended Kansas University. He most recently lived in Texas and New York. Mr. Gilbert has worked as a carpenter and in group homes for people with developmental disabilities. In 1997, he started studying art and decided to become a sculptor.

In his statement, Kermit says "Stainless Steel #!" is not a birdhouse. "I mean what would a birdhouse have to look like to make it through a nuc'lar strike anyway? Why build a stainless steel thing? Is it funny? Is it really durable? I deny the right to categorize art."



"Trefoil in Motion"
Stephen Janesko
Tonganoxie, Kansas
Media: Metals

8

Steve has been sculpting for over seven years. His introduction to sculpting was first expressed through carving wood and bone. These materials were used due to their unique properties and availability. Since then, he has gravitated toward metal and stone as a medium of choice and periodically casts in bronze.

"Utilizing a variety of mediums helps in expressing one's visions."

Steve's desire for sculpting comes forth in a stylized form that moves between realism and surrealism.

Anyone interested in purchasing a piece represented in this year's exhibition may call the office of the City Manager, (785) 832-3400, or visit the City Manager's office, fourth floor, City Hall, 6 E. 6th St.

City Commission:

Sue Hack, Mayor
David M. Dunfield
James R. Henry
Martin Kennedy
Mike Rundle

Lawrence Arts Commission:

Lewis Tilford, Chair
William Carswell
Elizabeth Clark
DiAnne Damro
Shelley R. Davis
Kay Henry
Marlene Merrill
Jeff Ridgway
Dan Sabatini
Janet Satz
Linda Stone-Ferrier

Sponsored by:

Lawrence Arts Commission
The Kansas Sculptors Association
Lawrence Convention and Visitors Bureau
City of Lawrence