

# 14<sup>th</sup> Annual

outdoor · sculpture · exhibition  
downtown · lawrence · kansas

The Lawrence Arts Commission  
welcomes you  
to the 14th Annual  
Downtown Lawrence  
Outdoor Sculpture Exhibition.

The exhibition features eight original works from artists across the United States, which were selected from over a hundred submissions. This year's exhibition was juried by Robert Soppelsa, Director, Mulvane Art Museum, Washburn University in Topeka, Kansas.

The exhibition is organized to enhance the understanding and appreciation of sculpture. This brochure is organized to assist a viewer's enjoyment of a self guided tour of the exhibition.

The Lawrence Arts Commission appreciates the efforts of many organizations and individuals that assist with this annual exhibition and especially want to recognize the Lawrence Convention and Visitor Bureau, Jim Patti and City of Lawrence for their many contributions.



# Exhibit Map





# 1

## Deer Hunter

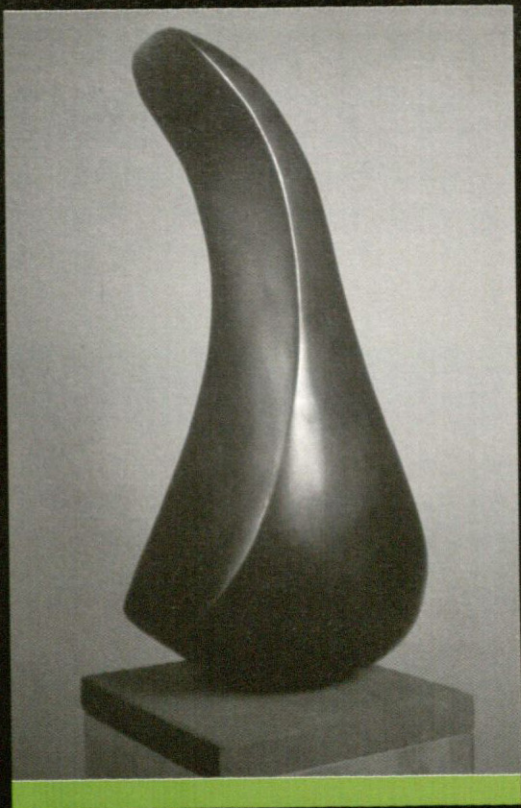
### Leslie Bruning

Omaha, NE • Media: Steel

Leslie studied at the Graz Center in Austria and received a BA from Nebraska Wesleyan University and an MFA in sculpture from Syracuse University. Currently, Leslie is Chair of the Art Area of Bellevue University, Bellevue, NE. His works are abstractions using symbolic images.

“Deer Hunter” is a fragmented bronze sculpture that has a cast bronze deer antler embedded in its chest. The tall looming form seems to lean forward like a hunter moving through the woods. The fragmentation creates an open airy feel.



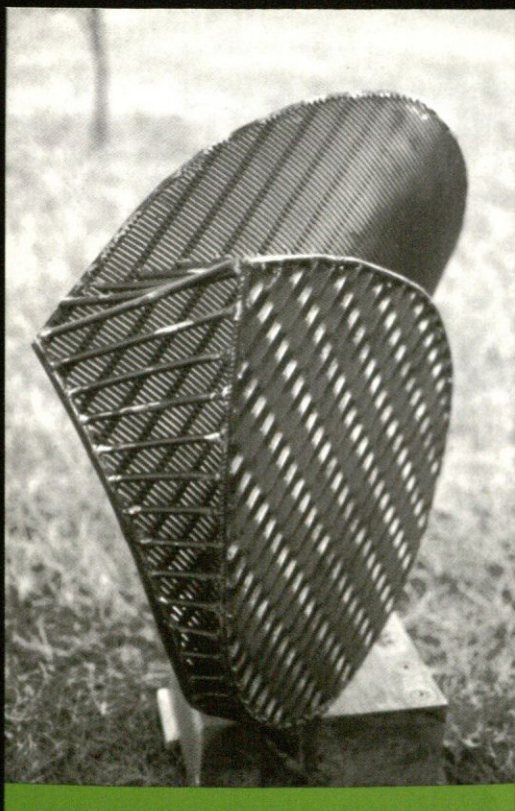


## Reverse Curve II

Joseph L. Castle III

Philadelphia, PA • Media: Bronze

For over ten years, Joseph L. Castle has designed sculptures for parks, foundation collections and private residences. Joseph's work is deeply inspired by the human form and geometric shapes. His medium of choice is bronze for its sensual nature.



3

## Cross Action

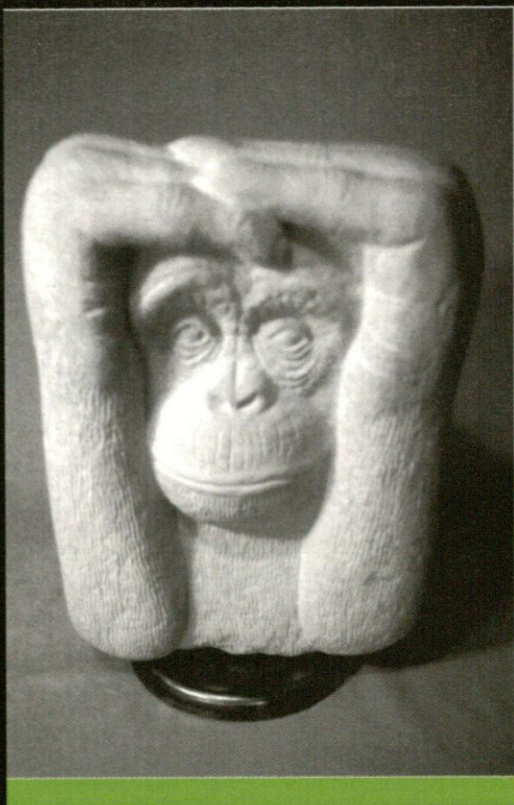
### Donald Lee Dynneson

Seward, NE • Media: Steel

Donald received a BS in 1966 from Dana College, Blair, Nebraska. He attained an MA and MFA in 1969 and 1971 respectively from University of Wyoming. He is currently a Professor of Art at Concordia University in Seward, Nebraska.

The textured metal surfaces are arranged to promote a moiré (wavy patterns) effect. They have a shell and/or leaf reference with opposed axis. The structure invites the viewer to walk around it. Sunlight and shadow have additional visual offerings.





4

## Just A Little Evil

Beth Van Natta

Halstead, KS • Media: Limestone

Beth received her Bachelor of Art Ed in 1969 from Ft. Hays. She taught for several years at Hutchinson High School and Hutchinson Community College. She retired in 1999 from teaching to enjoy and focus on her art.



5

## Overhead Overture

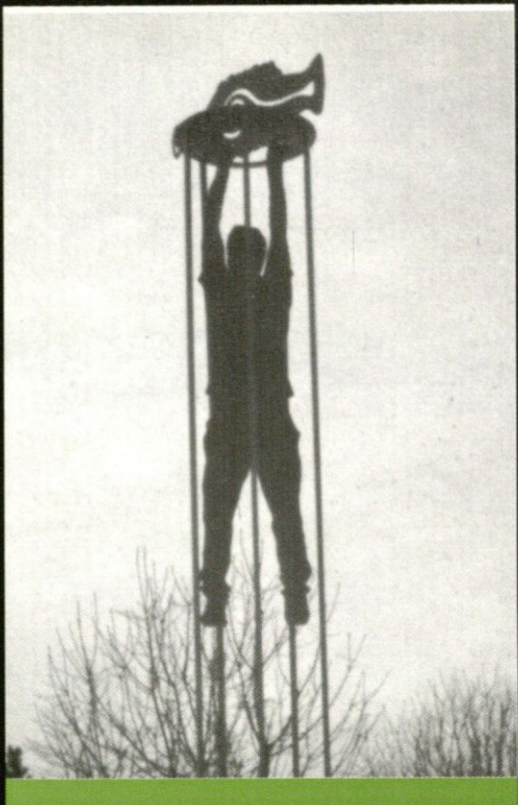
Mary Jane Lamberson

Dannebrog, NE • Media: Welded Steel

“Overhead Overture” is a manipulated steel rod sculpture in ongoing exploration of figures in motion. This piece represents a pair of abstract figures on the dance stage or on the ice skating rink frozen in mid-action. The final direction of the figures is left to the imagination and internal music of the viewer.

“My energies have always been focused toward some form of creative expression. My background and training were originally directed toward 2-dimensional work, with my academic emphasis being watercolors. After exploring several areas of traditional 3-dimensional media, such as bronze, clay and stone, I began experimenting with found materials and recycled metal, primarily steel.”





## Artist Hanging On

### Leslie Bruning

Omaha, NE • Media: Steel

Leslie studied at the Graz Center in Austria and received a BA from Nebraska Wesleyan University and an MFA in sculpture from Syracuse University. Currently, Leslie is Chair of the Art Area of Bellevue University, Bellevue, NE. His works are abstractions using symbolic images.

"Artist Hanging On" is from a series of works that I created to pay homage to working artists. The particular artist represented here is a ceramic artist in full size and with a cutout of an example of his artwork. The narrow opening and the project into the air by the sculpture is to reflect the difficulties that artists face to continue to produce their work. The work is welded steel and painted a bright orange color.



## Cart I

Donald W. Horstman

Fenton, MO • Media: Steel

Donald received his BFA in Fine Art from Washington University in St. Louis, MO and M.A.T. at Webster University also in St. Louis, MO.

“My mission is to restore cast-off elements of our society to a worthy, functional aspect of our collective consciousness as an appreciated work of art. The art then becomes its own reality and all of its components cease to be what they were. This new reality enlightens your subconscious; liberating your mind to explore new dimensions without any of the fetters and absolutes society has cluttered it up with. The art is the unrestricted message.”





8

## Pneuma

### James Berg

Hot Springs, AK • Media: Marble

James attended University of Kansas and Ft. Hays State to study with many other painters and sculptors as associates in the same field.

“I can’t remember when I wasn’t involved in creating artwork...I am still learning at the age of 59.”

“Pneuma” is Greek for spirit and spirit meaning life, wind, wholeness, breath, and inward man.

### City Commission:

Mike Rundle, Mayor  
David Dunfield  
Sue Hack  
James Henry  
Marty Kennedy  
Mike Wildgen, City Manager

### Lawrence Arts Commission:

Bill Carswell, Chair  
Bob Bowline  
Ellen Casagrande  
Betsy Clark  
Kay Henry  
Sally Hersh  
Marlene Merrill  
Jeff Ridgeway  
Dan Sabatini  
Linda Stone-Ferrier  
Lewis Tilford  
Mike Tubbs

### Sponsored By:

Lawrence Arts Commission  
The Kansas Sculptors Association  
Lawrence Convention and Visitors Bureau  
City of Lawrence

### Designed By:

redletter studio  
Stephanie Jirak

Anyone interested in purchasing a piece represented  
in this year's exhibition may call the office of the  
City Manager, 832-3400, or visit the City Manager's  
Office, fourth floor, City Hall, 6 East 6th Street



2003 LAWRENCE, KANSAS

OUTDOOR-DOWNTOWN  
SCULPTURE EXHIBITION

16<sup>th</sup>  
ANNUAL

## **The Lawrence Arts Commission welcomes you to the 16th Annual Downtown Lawrence Outdoor Sculpture Exhibition**

The exhibition features eight original works from artists across the United States, which were selected from over 40 submissions. This year's exhibition was juried by Dr. Jan Schall, the Sanders Sosland Curator of Modern and Contemporary Art at the Nelson-Atkins Museum of Art in Kansas City, Missouri.

The exhibition is organized to enhance the understanding and appreciation of sculpture. This brochure is organized to assist a viewer's enjoyment of a self-guided tour of the exhibition.

The Lawrence Arts Commission appreciates the efforts of many organizations and individuals that assist with this annual exhibition and especially want to recognize the Lawrence Convention and Visitor Bureau, Jim Patti and City of Lawrence for their many contributions.



# SCULPTURE LOCATIONS



↑  
NORTH