



**LAWRENCE CULTURAL ARTS COMMISSION  
COMMUNITY ARTS GRANT FINAL REPORT**

**Final reports are due no later than August 1, 2014.** Please fill out this form, attach final budget and documentation such as photographs, programs, reviews, or surveys, and submit it to:

Lawrence Cultural Arts Commission  
City Manager's Office  
ATTN: Diane Stoddard, Assistant City Manager  
P.O. Box 708  
Lawrence, KS 66044

Questions? Contact Diane at [dstoddard@lawrenceks.org](mailto:dstoddard@lawrenceks.org) or (785) 832-3413

**Name of Organization** Watkins Museum of History

**Address** 1047 Massachusetts St

**City, State, Zip Code** Lawrence, KS 66044

**Telephone** 785-841-4109 **Fax** \_\_\_\_\_ **E-Mail** amagariel@watkinsmuseum.org

**Project Director** Abby Pierron Magariel

**Project Title** Modern Views of Quantrill's Raid

**LCAC Grant Amount \$** 500 **Start Date** 8-16-2013 **End Date** 10-4-2013

*The following questions may be answered on this form or attached to the form as a separate document.*

1) Describe the outcome of this project

Two concurrent exhibits of original art works by local artists, reflecting on the legacy of Quantrill's Raid on Lawrence. Exhibits were at the Watkins Museum and the Lawrence Percolator.

2) Did this project change substantially from how you described it in your grant proposal?  yes  no  
If yes, please describe why and how it changed and the impact of this change on the outcome.

4) Estimate how many people benefited from this project: 2000 adults 100 children  
How did you collect these numbers?

Watkins Museum visitorship is counted at the front door. Percolator visitorship is estimated.

3) Describe what the LCAC grant enabled you to accomplish in regards to this project.

We hired a graphic designer to create a title panel to display in both locations to help unify the two exhibits. The panels were professionally printed on a durable surface. Artists were hired to create posters to advertise first the call for art, then the shows' openings.

4) Attach final project budget indicating specifically how the LCAC grant was expended.

5) Documentation of the project attached here includes (please itemize):

Photos of exhibit	Map connecting two exhibits	Info posters
Photos of opening reception	Image of intro panels	Family guide

Lawrence Cultural Arts Commission Community Arts Grant Final Report  
 Watkins Museum of History: "Modern Views of Quantrill's Raid"

Item	Cost	
Printing Fees from SignUp	\$200	LCAC
Design fees: Lauren Weege	\$100	LCAC
Artist commission: Rachael Perry	\$50	LCAC
Artist commission: Michael Bradley	\$50	LCAC
Color copies (posters, flyers, gallery guides)	\$80	LCAC
Paint	\$20	LCAC
Label materials	\$40	Watkins
Staff time: Abby Magariel 30 hrs @ \$30/hr	\$900	Watkins
Staff time: Lauren Taylor 10 hrs @ \$20/hr	\$200	Watkins
Staff time: Brittany Keegan 5 hrs @ \$30/hr	\$150	Watkins
Staff time: Seth Todd 5 hrs @ \$20/hr	\$100	Watkins
Reception refreshments	\$300	Watkins
Musical performance value	\$125	Watkins
Percolator volunteer time: 40 hours @ \$20/hr	\$800	Percolator
Percolator reception expenses	\$60	Percolator
<b>Total expenses:</b>	<b>\$500</b>	<b>\$1,815</b>
		<b>\$3,175</b>

To the members of the Lawrence Cultural Arts Commission board,

The Watkins Museum was the recipient of a \$500 Cultural Arts grant for the exhibit "Modern Views of Quantrill's Raid." In collaboration with the Lawrence Percolator, the dual exhibits shared original works by local artists responding to the legacy of Quantrill's Raid.

The exhibit garnered 25 submissions of new works. Most were visual, but others represented different creative genres: poetry, fiction, the spoken word and live musical performance. Artists came from Lawrence, Baldwin, Topeka and the surrounding areas. Some of the participating artists are regulars to the Lawrence arts scene, and others had never before publicly displayed their works. We enlisted a graphic designer to create visually impactful title panels for the exhibit that were installed at both locations. The title panels helped to unify the two exhibit locations, which are several blocks apart. They also gave the exhibits a professional polish that made it blend in with the new permanent exhibit at the Watkins, opening that same weekend.

The exhibit at the Watkins opened on August 16 and closed on October 4. The exhibit at the Percolator opened August 30 and closed September 30. The weekend of August 16-18 saw record crowds at the Watkins Museum, as the new permanent exhibition on Lawrence and Douglas County's history was celebrating its grand opening, special programming was offered, and the museum was open for extended hours. The "Modern Views" exhibit was staged in the new temporary exhibit space directly adjacent to the new exhibits, so all visitors to the museum walked through the art exhibit. Over 1100 people visited the museum on Saturday, August 17 alone.

Both exhibits celebrated a grand opening on Friday, August 30. The Watkins welcomed 135 visitors that evening, and the Percolator around half that number. Visitors were treated to live music and an original reading inspired by women affected by the massacre.

Abby Pierron Magariel was the project coordinator, and worked with the board at the Percolator to encourage artists to submit works. Rachael Perry, the chair of the Percolator board, worked many hours to enlist artists, build an interactive component to the exhibit, create original artwork to display and assemble the Percolator exhibit. Lauren Taylor, the education intern at the Watkins, created a family guide for the exhibit. It was used by casual visitors both with and without children. She also created a survey to collect information about visitors during the exhibit's opening reception. Seth Todd, the exhibits intern at the Watkins, mounted labels for the works on display and helped with exhibit installation. Brittany Keegan, curator at the Watkins, led the installation of the exhibit at the Watkins. Steve Nowak, director of the Douglas County Historical Society, lent his expertise at exhibit installation and label design.

Without the support of the Lawrence Cultural Arts Commission, the two exhibits would not have felt like one cohesive, collaborative project.



Selections from the Watkins exhibit



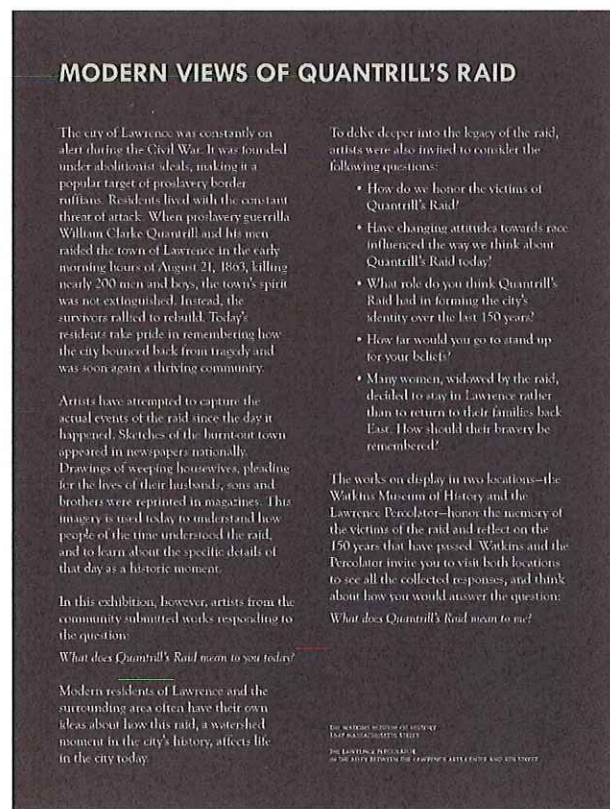
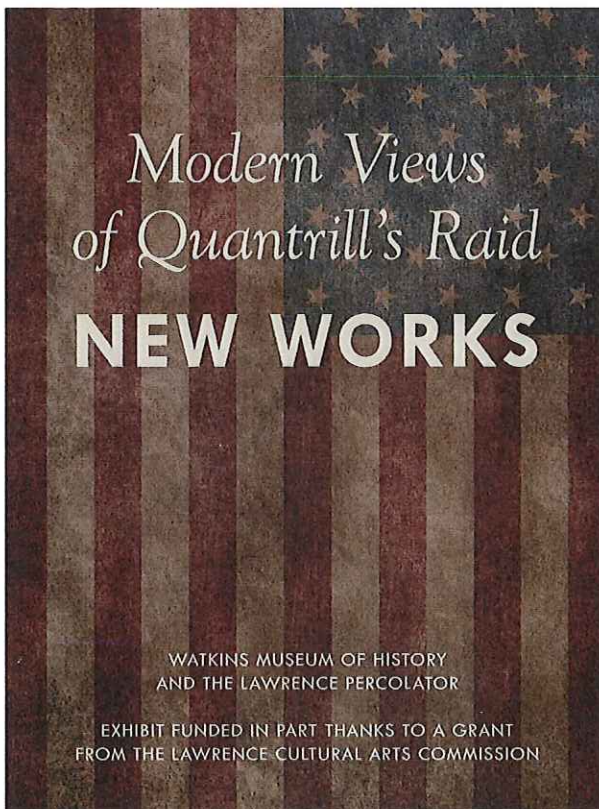
Exhibit Opening photos



Installation at the Percolator

Left: interactive memory board

Right: Place to write thoughts about the city's recovery after the raid



Intro panels designed by Lauren Weege. Both were printed on durable material and installed at the two exhibit locations.



*The Watkins Community Museum  
&  
The Lawrence Percolator  
present*

*Modern Views of  
Quantrill's  
Raid*  
*New Works*

On Display at both  
Watkins Museum of History  
and the Lawrence Percolator  
Opening August 16th  
Running through October

915 Rhode Island  
LCAVA.org  
Made possible with the support of the Lawrence Cultural Arts Commission

1047 Mass.  
watkinsmuseum.org

THE WATKINS MUSEUM AND THE LAWRENCE PERCOLATOR ARE PROUD TO ANNOUNCE

**A CALL FOR ART:**

**WHAT DOES  
QUANTRILL'S RAID  
MEAN TO YOU TODAY?**



Works will be displayed at the Watkins and the Percolator from early August through October. All artistic media are welcome for submission. For more ideas to get you started, visit [lawrence-percolator.blogspot.com](http://lawrence-percolator.blogspot.com) or [watkinsmuseum.org](http://watkinsmuseum.org).

To submit works, contact Abby Pierron at the Watkins Museum, 785-841-4109 or email [apierron@watkinsmuseum.org](mailto:apierron@watkinsmuseum.org) for details. Works will be accepted at the Watkins Museum and the Percolator in late July and early August.



Commissioned posters advertising the exhibit

*The Watkins Museum of History  
& The Lawrence Percolator  
present*

*Modern Views of  
Quantrill's  
Raid* *New Works*

On Display at both  
Watkins Museum of History  
and the Lawrence Percolator

Opening August 30th

915 Rhode Island      PERCOLATOR      10-17 Mass.  
LAWA.org      LAWRENCE      watkinsmuseum.org  
KANSAS

Made possible with the support of the Lawrence Cultural Arts Commission

Parking for the Percolator is available at the Parking Garage on New Hampshire (across from the Lawrence Arts Center).

Access the Percolator on foot, either from the alley between 9th & 10th streets east of New Hampshire or from Rhode Island St.

Parking is available for the Watkins Museum either in the small lot behind the building or streetside on Massachusetts St.





## Want to Learn More?

### At the Watkins:

Explore the Quantrill's Raid experience in the permanent exhibit on the 2nd floor (right behind this gallery). It has an interactive map on which you can trace the raiders' route and listen to reactions to the raid from people who lived through it.

Research at the Watkins! Make an appointment and dive through city records and the Watkins' library.

### In a Book:

*A history of Lawrence, Kansas, from the First Settlement to the Close of the Rebellion* by Richard Cordley

*Bleeding Kansas: Contested Liberty in the Civil War Era*  
by Nicole Etcheson

*Lawrence: Survivors of Quantrill's Raid* by Katie Armitage

\*All titles are available at the Watkins gift shop

### Online:

Kansas State Historical Society  
[http://www.kshs.org/portal\\_research](http://www.kshs.org/portal_research)

Kansapedia  
[http://www.kshs.org/portal\\_kansapedia](http://www.kshs.org/portal_kansapedia)



## Modern Views of Quantrill's Raid Family Guide

# Modern Views of Quantrill's Raid NEW WORKS

WATKINS MUSEUM OF HISTORY  
AND THE LAWRENCE PERCOLATOR

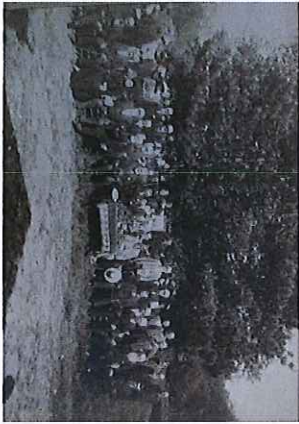
EXHIBIT FUNDED IN PART THANKS TO A GRANT  
FROM THE LAWRENCE CULTURAL ARTS COMMISSION

## Remembering the Raid

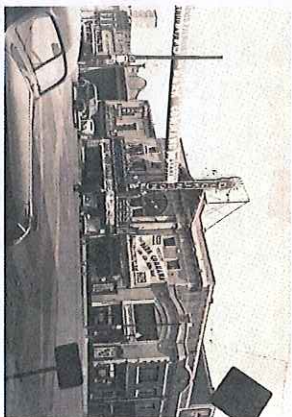
Quantrill's Raid was a great tragedy but also a defining moment in Lawrence's history. In the early morning on August 21, guerilla raiders led by William Quantrill swept into Lawrence killing nearly 200 men and boys and causing over \$1 million in damage to the town.

Lawrencians were shocked and saddened, but determined to rebuild and honor those who died. Survivors of the raid held gatherings to remember the fallen. Oak Hill Cemetery was built to commemorate the raid and the bravery of those killed. The raid is even dramatized in films and television shows.

Over the last 150 years, Quantrill's raid has meant many things to the people of Lawrence. What does it mean to you?



Reunion of Quantrill's Raid Survivors



Premiere of Dark Command, a movie about Quantrill's Raid, at what is now Liberty Hall in Lawrence.



Vigil at Oak Cemetery for Quantrill's Raid victims

## Activities

These photos got separated from the rest of the artwork! Can you find which pieces of art they belong to?

Write the title in the blanks.



Choose one of the works of art you found above. What do you feel when you look at this artwork?

Circle the words you think describe the piece.

BOLD	EXCITING	LONELY	QUIET
HOPE	COLORFUL	PEACEFUL	LOUD

Write your own: \_\_\_\_\_

Which piece of art is your favorite? Leave your vote with the volunteer at the front desk! We'll post the crowd favorite on Facebook and Twitter before the exhibit closes.

 @WatkinsMuseum

 /watkinsmuseumofhistory

Watkins	11	73%
Percolator	4	27%

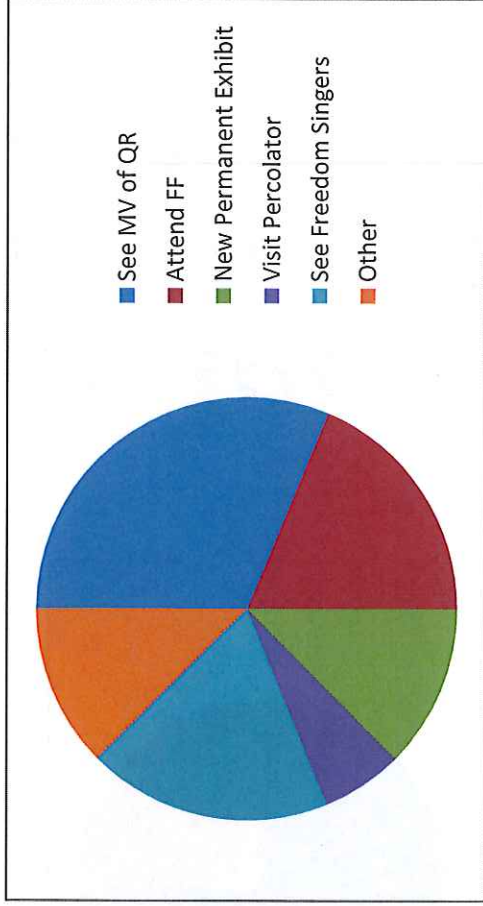
Reason for Visit	5	31%
Attend FF	3	19%
New Permanent Exhibit	2	13%
Visit Percolator	1	6%
See Freedom Singers	3	19%
Other	2	13%

Been to Watkins Before?	14	93%
Yes	1	7%
No		

How long since last at the Watkins?	7	47%
Less than a year		

Been to Percolator	8	53%
Yes	7	47%
No		

How long since last at Percolator	8	53%
Less than a year		



Plan to see both shows

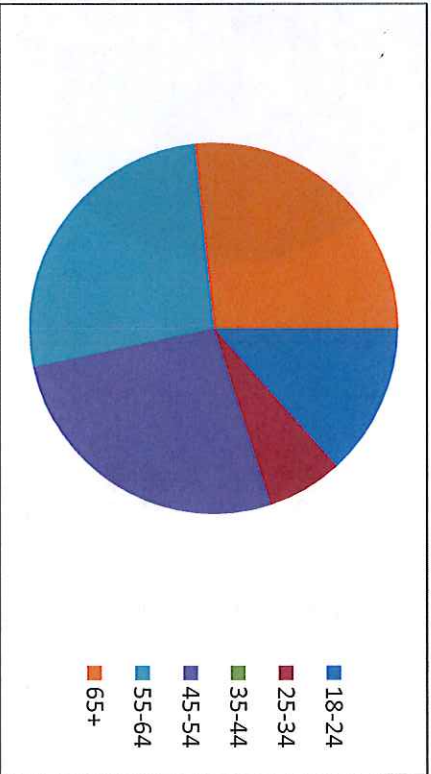
Yes	11	73%
No	2	13%

Age

18-24	2	13%
25-34	1	7%
35-44	0	0%
45-54	4	27%
55-64	4	27%
65+	4	27%

Which city do you live?

Lawrence	15	100%
----------	----	------



How did you hear?

Percolator Website	1	6%
Watkins Website	1	6%
Radio	2	12%
Lawrence Calendar	0	0%
Percolator FB	3	18%
Watkins FB	0	0%
Newspaper	4	24%
Word of Mouth	6	35%
Other	1	6%

