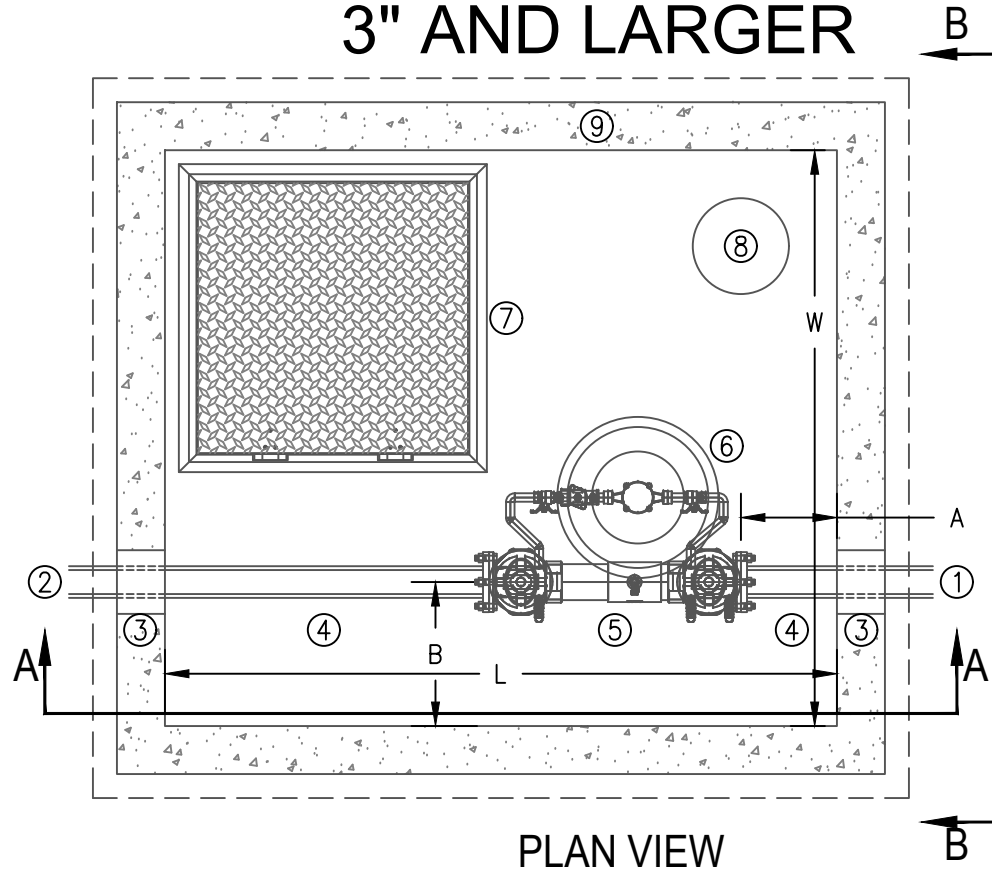


# BACKFLOW VAULT DETAIL 3" AND LARGER



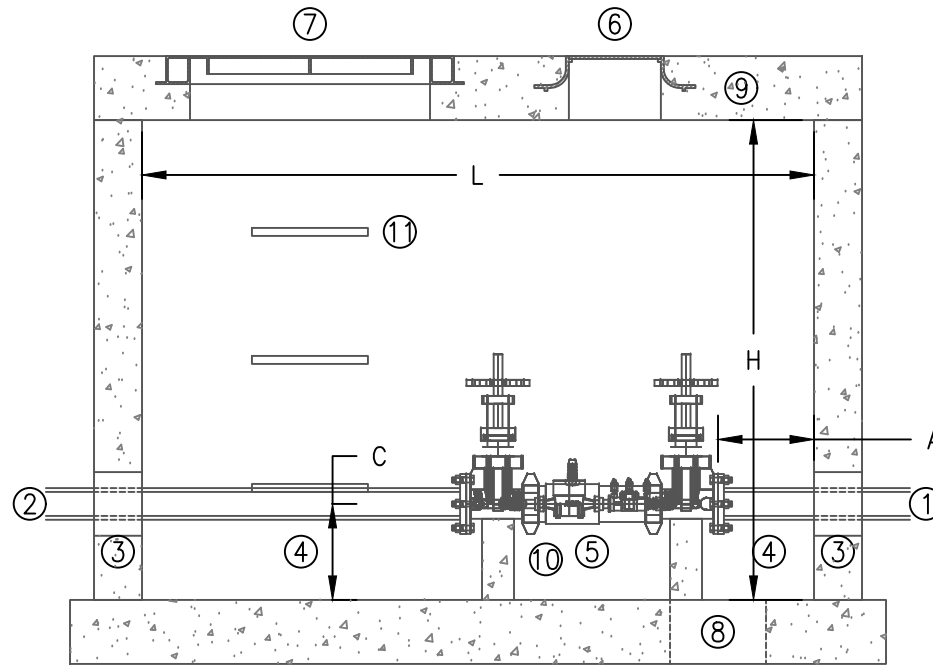
## NOTES:

- 1 INLET
- 2 OUTLET
- 3 WALL SLEEVE, 2" GREATER THAN SUPPLY PIPE DIAMETER
- 4 FLANGE X PLAIN END WALL PIPE
- 5 DOUBLE CHECK DETECTOR BACKFLOW ASSEMBLY
- 6 FORD A32PR-BR INSPECTION RING, CENTERED OVER DETECTOR METER
- 7 30"x30" ACCESS HATCH
- 8 SUMP HOLE
- 9 CONCRETE VAULT, PRECAST OR CAST-IN-PLACE  
DESIGN BY OTHERS

- A CLEAR DISTANCE, 12" MINIMUM
- B CLEAR DISTANCE = FLANGE DIA./2 + 12", 18" MINIMUM
- L VAULT LENGTH PER VAULT SUPPLIER/DESIGNER
- W VAULT WIDTH PER VAULT SUPPLIER/DESIGNER

ALL NUTS AND BOLTS SHALL BE STAINLESS STEEL GRADE 304 OR BETTER, COATED TO PREVENT GALLING AND SEIZING.  
FLANGE GASKETS SHALL BE  $\frac{1}{8}$ " THICK 150 LB. RED RUBBER.

# BACKFLOW VAULT DETAIL 3" AND LARGER



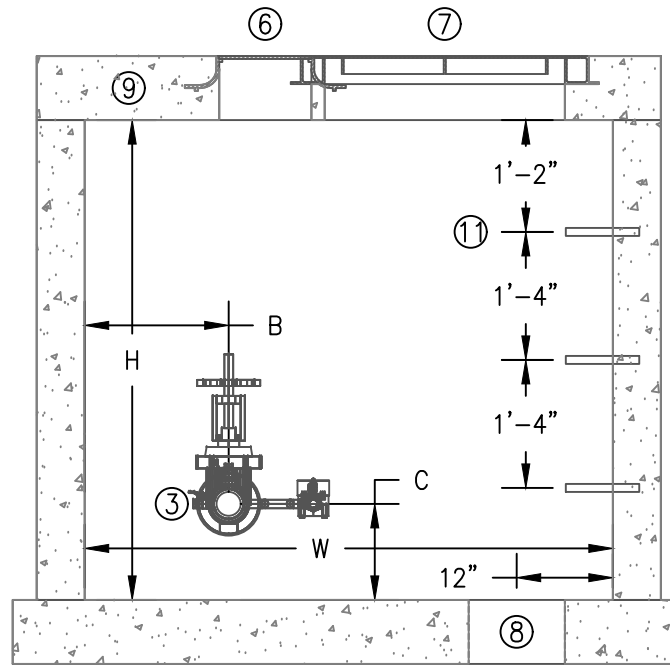
SECTION A-A

NOTES:

- |   |   |    |   |
|---|---|----|---|
| 1 | INLET   | 10 | CONCRETE PIPE SUPPORT                                   |
| 2 | OUTLET  | 11 | STEPS, MA INDUSTRIES PS2-PF-DF OR EQUAL, 3 REQUIRED     |
| 3 | WALL SLEEVE, 2" GREATER THAN SUPPLY PIPE DIAMETER           | A  | CLEAR DISTANCE, 12" MINIMUM                             |
| 4 | FLANGE X PLAIN END WALL PIPE                                | C  | CLEAR DISTANCE = FLANGE DIA./2 + 12", 18" MINIMUM       |
| 5 | DOUBLE CHECK DETECTOR BACKFLOW ASSEMBLY                     | L  | VAULT LENGTH PER VAULT SUPPLIER/DESIGNER                |
| 6 | FORD A32PR-BR INSPECTION RING, CENTERED OVER DETECTOR METER | H  | VAULT HEIGHT PER VAULT SUPPLIER/DESIGNER, 5'-0" MINIMUM |
| 7 | 30"x30" ACCESS HATCH  |    |   |
| 8 | SUMP HOLE   |    |   |
| 9 | CONCRETE VAULT, PRECAST OR CAST-IN-PLACE DESIGN BY OTHERS   |    |   |

ALL NUTS AND BOLTS SHALL BE STAINLESS STEEL GRADE 304 OR BETTER, COATED TO PREVENT GALLING AND SEIZING.  
FLANGE GASKETS SHALL BE  $\frac{1}{8}$ " THICK 150 LB. RED RUBBER.

# BACKFLOW VAULT DETAIL 3" AND LARGER



SECTION B-B

NOTES:

- |    |   |   |   |
|----|---|---|---|
| 3  | WALL SLEEVE, 2" GREATER THAN SUPPLY PIPE DIAMETER           | W | VAULT WIDTH PER VAULT SUPPLIER/DESIGNER                 |
| 6  | FORD A32PR-BR INSPECTION RING, CENTERED OVER DETECTOR METER | H | VAULT HEIGHT PER VAULT SUPPLIER/DESIGNER, 5'-0" MINIMUM |
| 7  | 30"x30" ACCESS HATCH  |   |   |
| 8  | SUMP HOLE   |   |   |
| 9  | CONCRETE VAULT, PRECAST OR CAST-IN-PLACE DESIGN BY OTHERS   |   |   |
| 11 | STEPS, MA INDUSTRIES PS2-PF-DF OR EQUAL, 3 REQUIRED         |   |   |
| B  | CLEAR DISTANCE = FLANGE DIA./2 + 12", 18" MINIMUM           |   |   |
| C  | CLEAR DISTANCE = FLANGE DIA./2 + 12", 18" MINIMUM           |   |   |

ALL NUTS AND BOLTS SHALL BE STAINLESS STEEL GRADE 304 OR BETTER, COATED TO PREVENT GALLING AND SEIZING.  
FLANGE GASKETS SHALL BE  $\frac{1}{8}$ " THICK 150 LB. RED RUBBER.