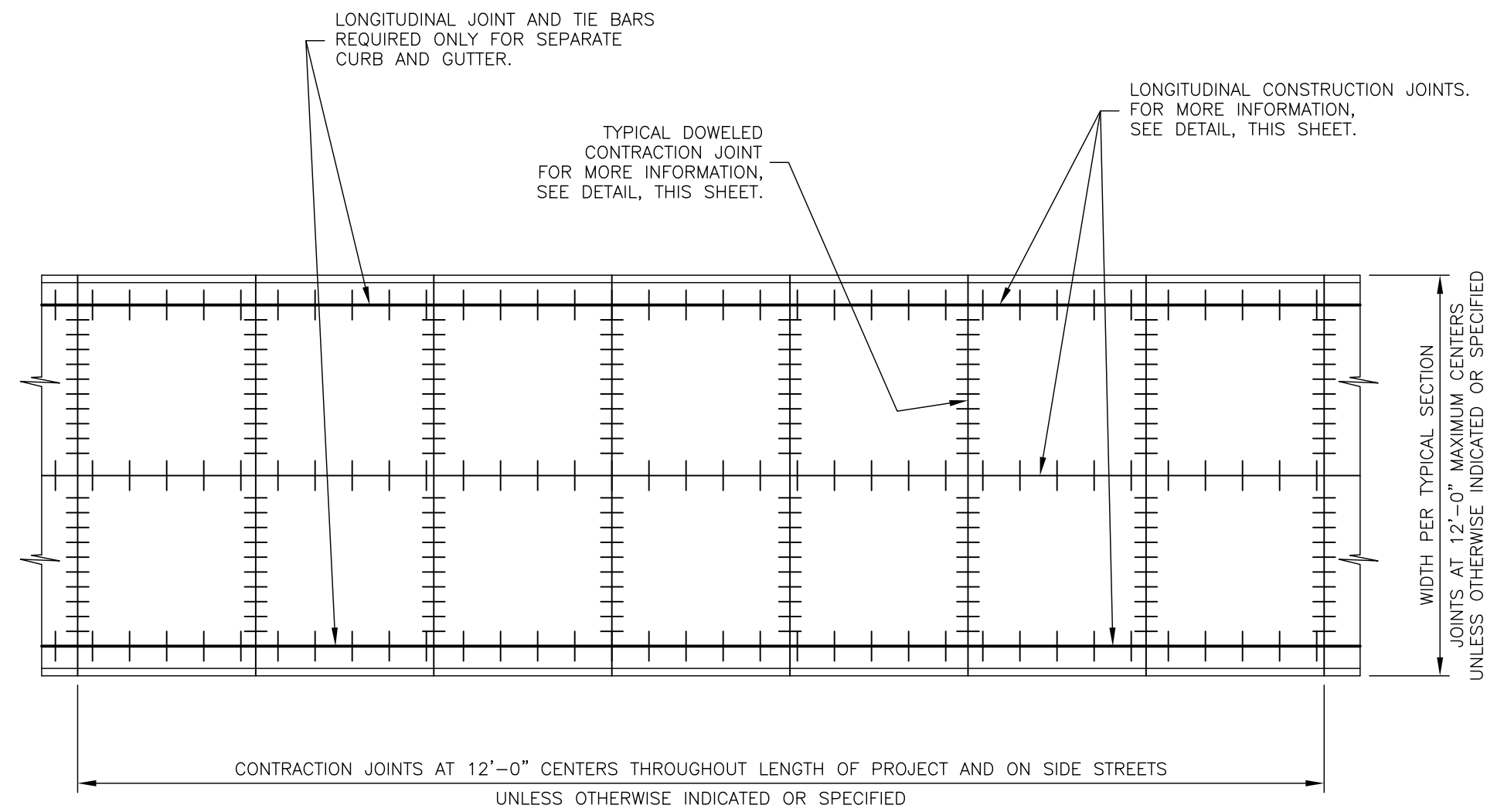
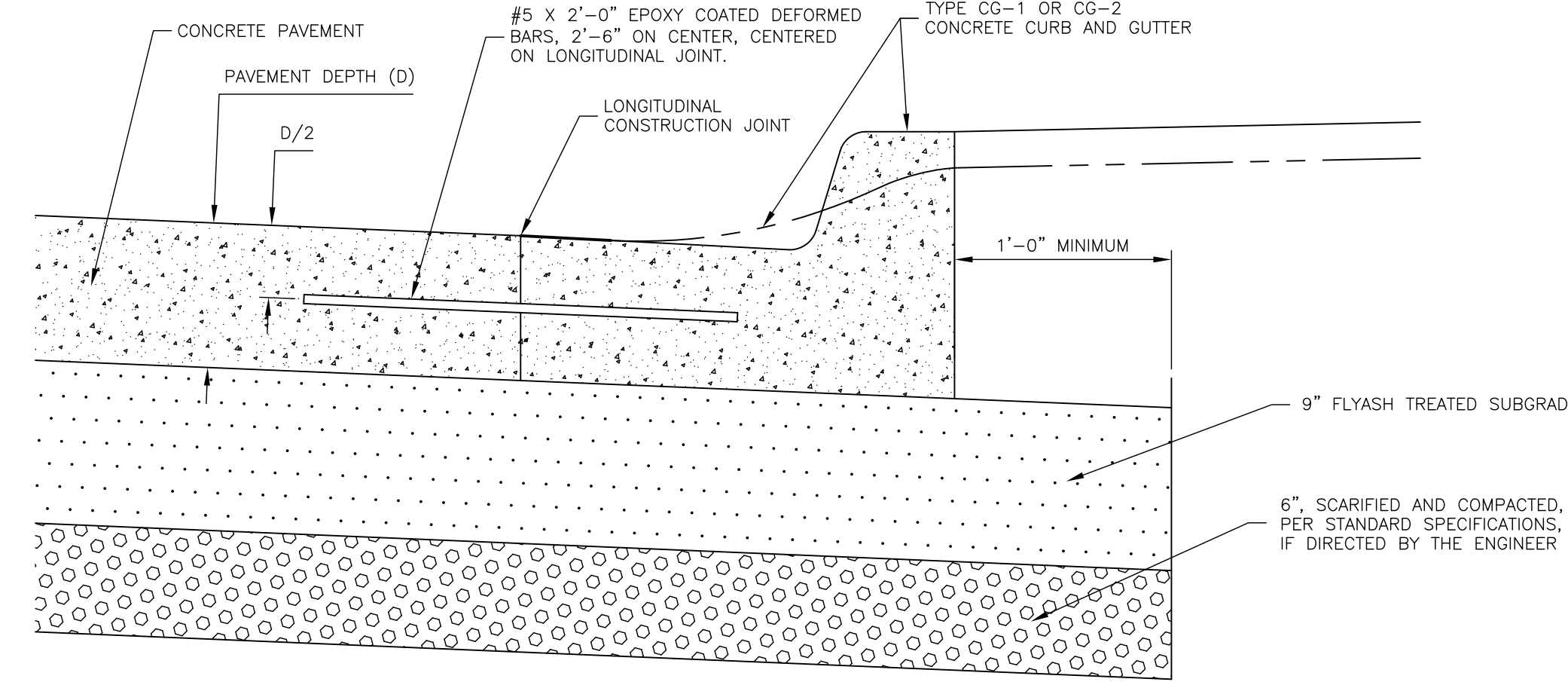


NOTES:

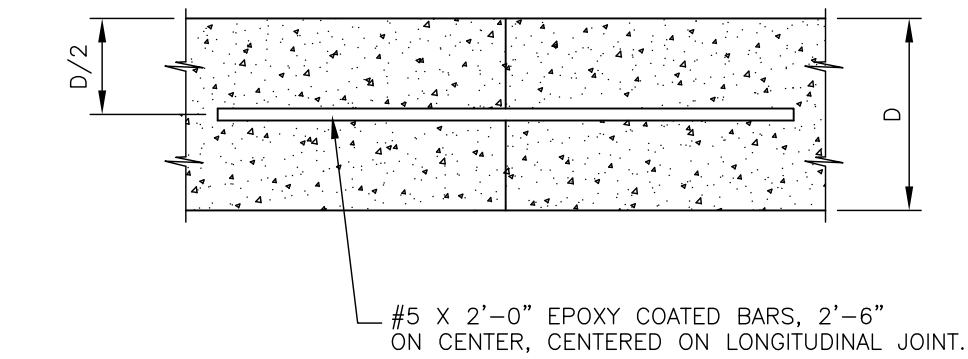
1. ALL BARS, REINFORCEMENT CHAIRS AND JOINT MATERIAL ARE SUBSIDIARY TO THE PRICE BID FOR PORTLAND CEMENT CONCRETE PAVEMENT.
2. CURB AND GUTTER ADJOINING PORTLAND CEMENT CONCRETE PAVEMENT MAY, AT THE CONTRACTOR'S OPTION, BE PLACED INTEGRAL WITH PAVEMENT OR SEPARATELY. IF PLACED SEPARATELY, SEE DETAIL, THIS SHEET.
3. PAVEMENT JOINTS SHALL BE CONTINUED THROUGH CURB AND GUTTER. JOINTS IN THE PAVEMENT AND CURB AND GUTTER SHALL BE SEALED IN ACCORDANCE WITH STANDARD SPECIFICATIONS.
4. ISOLATION JOINTS IN THE CURB AND GUTTER ARE TO BE PLACED OPPOSITE ISOLATION JOINTS IN THE PORTLAND CEMENT CONCRETE PAVEMENT.
5. ISOLATION JOINTS SHALL BE PLACED AT LOCATIONS INDICATED ON THE PROJECT PLANS OR AS DIRECTED BY THE CITY ENGINEER OR AN AUTHORIZED REPRESENTATIVE.



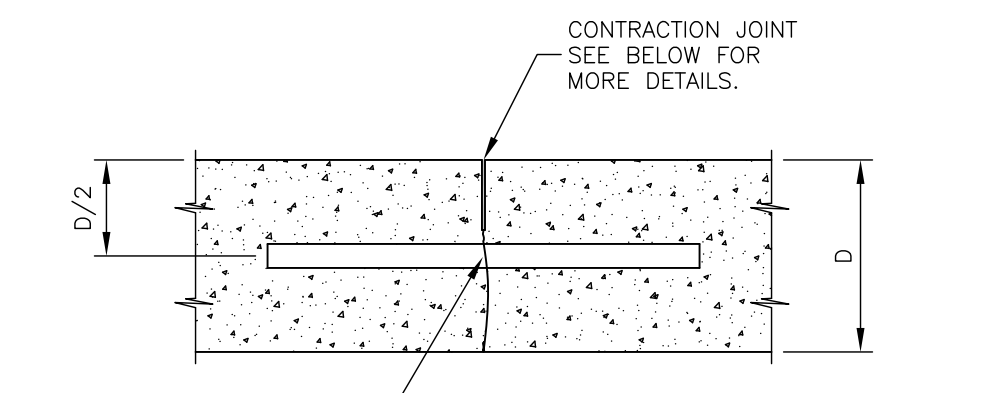
JOINT PLAN



SEPARATE CURB AND GUTTER



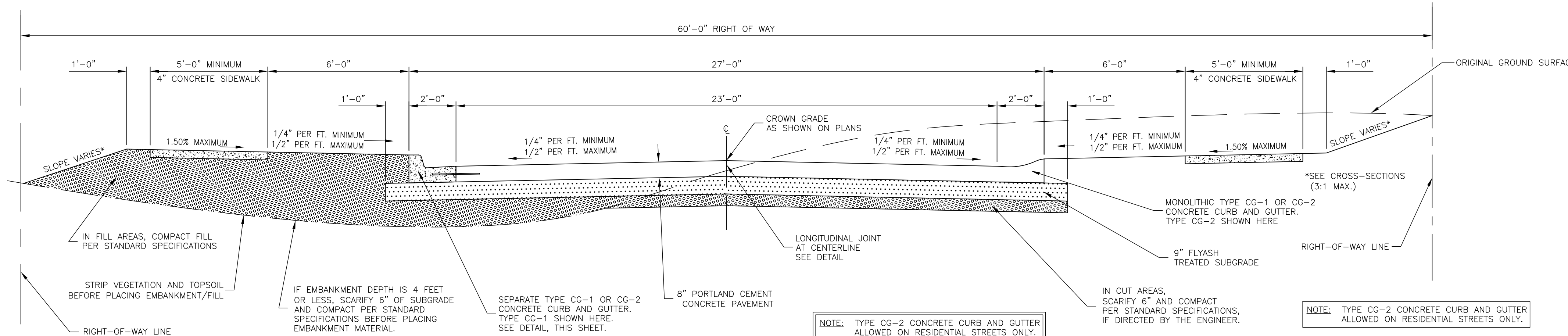
LONGITUDINAL CONSTRUCTION JOINT



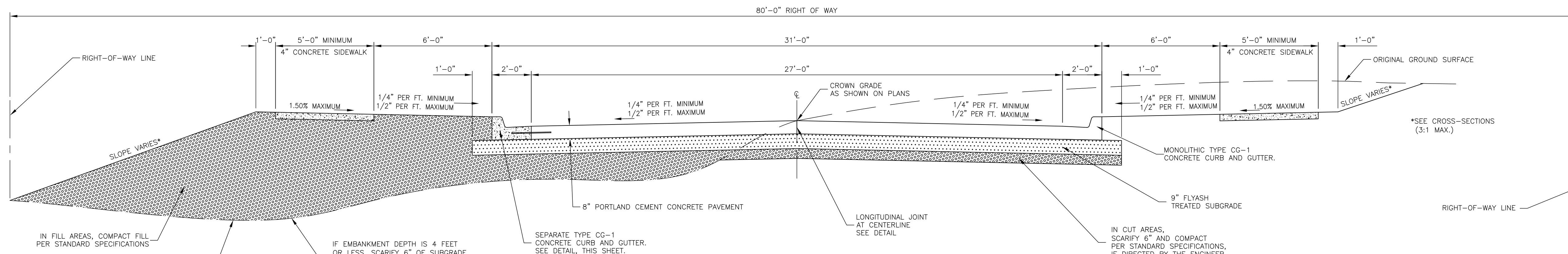
DOWEL SIZING CHART

BAR DIAMETER	PAVEMENT DEPTH (D)
1"	8"
1 1/4"	10"
1 1/2"	12"

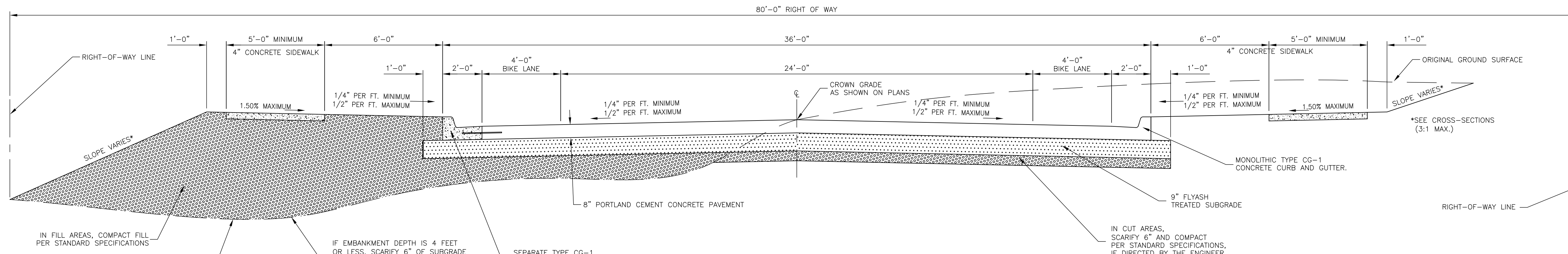
DOWELED CONTRACTION JOINT



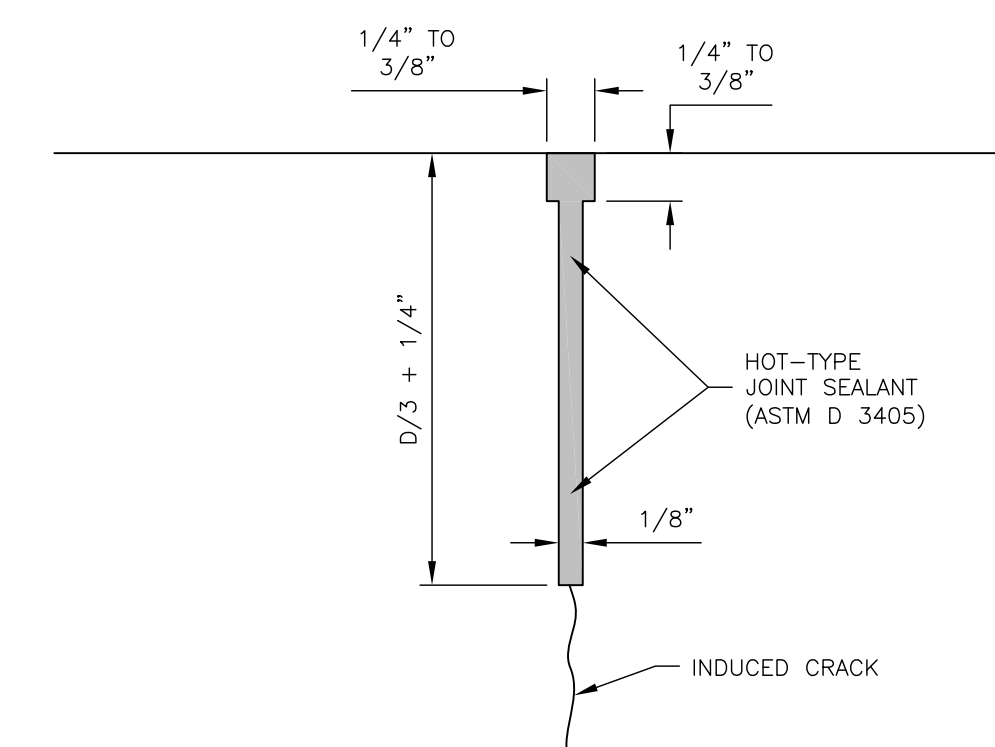
TYPICAL SECTION-27' STREET (RESIDENTIAL)



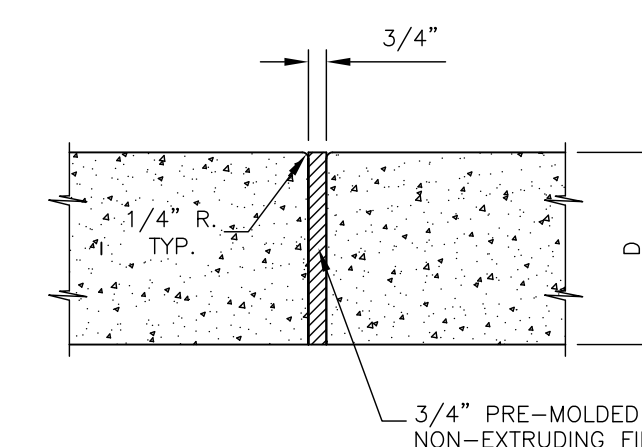
TYPICAL SECTION-31' STREET (COLLECTOR)



TYPICAL SECTION-36' STREET (COLLECTOR)



ENLARGED VIEW OF CONTRACTION JOINT



ISOLATION JOINT

2018 EDITION

SHEET ____ OF ____

DATE	BY	REVISION
03-13-18	LJM	REPLACES ALL PREVIOUS VERSIONS OF CONCRETE STREET DETAILS
12-19-17	LJM	REPLACES ALL PREVIOUS VERSIONS OF CONCRETE STREET DETAILS
03-21-17	LJM	REPLACES ALL PREVIOUS VERSIONS OF CONCRETE STREET DETAILS
02-22-16	LJM	REPLACES ALL PREVIOUS VERSIONS OF CONCRETE STREET DETAILS
03-17-15	LJM	REPLACES ALL PREVIOUS VERSIONS OF CONCRETE STREET DETAILS
03-17-15	LJM	BARS IN "SEPARATE CURB AND GUTTER" DETAIL REVISED



STANDARD DETAILS FOR PORTLAND CEMENT CONCRETE STREETS

DAVID P. CRONIN CITY ENGINEER THOMAS M. MARKUS CITY MANAGER