

# Proposal for Penn Street Lofts Exterior Murals

801 PENNSYLVANIA STREET IN LAWRENCE, KANSAS



stephen t **johnson** + strong hand **steady signs**

# ***Blooming: Roses & Sunflowers***

## Proposal for Exterior Murals for Penn Street Lofts in Lawrence, Kansas

### **Concept Summary**

A sunflower representing the state of Kansas and roses representing the floral plantings around the Warehouse Arts District function as design motifs and intuitive wayfinding, celebrating this burgeoning and blossoming East Lawrence neighborhood. Stylistically, the work reflects the historic nature of the area with simplicity and elegance, and in keeping with the painted typography on the Poehler Lofts across the street.

### **Location**

Penn Lofts North and South Walls located at 801 Pennsylvania Street, Lawrence, Kansas.

### **Approvals from Neighboring Businesses**

A1 Automotive, Art Emergency, East Side Woodshop, Form and Function, Jungle House, Kennedy Glass, 9 Del Lofts, PDS Moving, Poehler Lofts, Seed Co Studios, Slimmer's Automotive, Star Signs and Tallgrass Studios.

### **Designs**

Stephen T. Johnson, 840 Delaware Street, Suite 5, Lawrence, Kansas.

### **Installation**

Strong Hand Steady Signs, 721 East 9th Street, Lawrence, Kansas.

### **Materials**

Nova Colors Artists' Acrylic Paint (water based 100% acrylic polymer medium made specifically for exterior brick, masonry, stucco, etc.). Standard professional procedures will be followed for cleaning and preparing the surface area with power washing and pressurized air, then priming where necessary.

### **Timeline**

Approximately 1 week per mural, weather permitting. Completion by August 15th, 2021.

### **Budget**

Design Fee	\$5,500
Installation	\$12,500
<b>Total</b>	<b>\$18,000</b>



## Street Views and Site Location



View north from 9th and Pennsylvania Streets



View south from 8th and Pennsylvania Streets



A – South Wall location



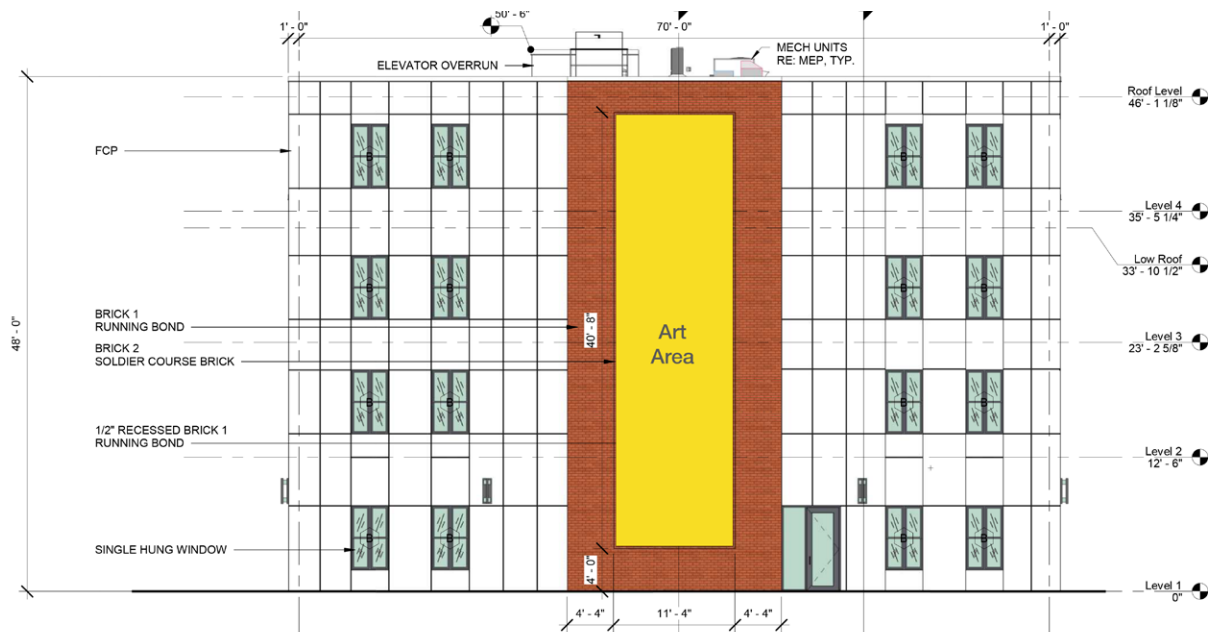
B – North Wall location

## South Wall



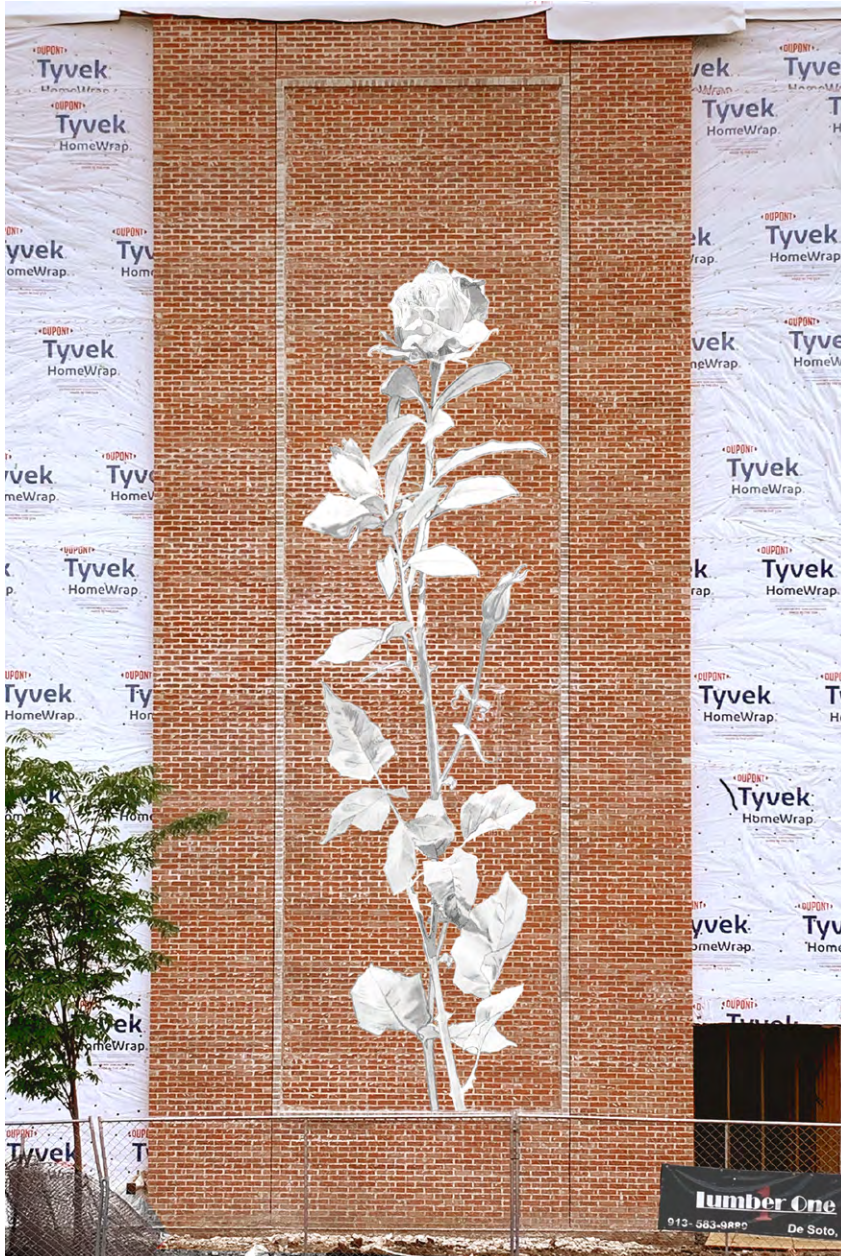
D3 SOUTH ELEVATION  
1/8" = 1'-0"

## North Wall



D5 NORTH ELEVATION  
1/8" = 1'-0"





**Blooming: Roses** – proposed design for North Wall, corner of Pennsylvania and 8th Streets. Art area: 33 x 10 feet.



**Blooming: Sunflowers** – proposed design for South Wall on Pennsylvania Street. Art area: 26 x 10 feet.



## North Wall Context – *Blooming: Roses*





## South Wall Context – ***Blooming: Sunflowers***





## Public Art Commissions by Stephen T. Johnson



### *Interconnections*

Glass mosaic murals created for the Lenexa Public Library in Lenexa, Kansas, 2019.



Detail during mosaic fabrication.



### *DeKalb Improvisation*

Murals created for the south mezzanine at DeKalb Subway Station in Brooklyn, New York, 2001-2004.

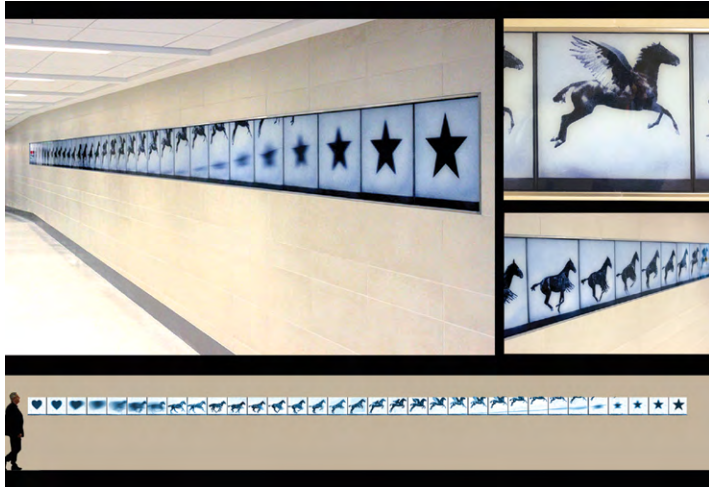


### *Freedom Rings*

Painted steel hoops, historic windmill tower and steel sphere, on main grounds, Wakarusa River Valley Heritage Museum, in Clinton, Kansas, 2009.



## Public Art Commissions by Stephen T. Johnson



### *Giddy-Up!*

Thirty-three glass art panels created for Love Field Airport in Dallas, Texas, 2014.



### *Arrangement in Red, Blue and Gold*

Wall sculpture created for the Lied Center of Kansas at the University of Kansas in Lawrence, Kansas, 2003.



### *Universal Delights*

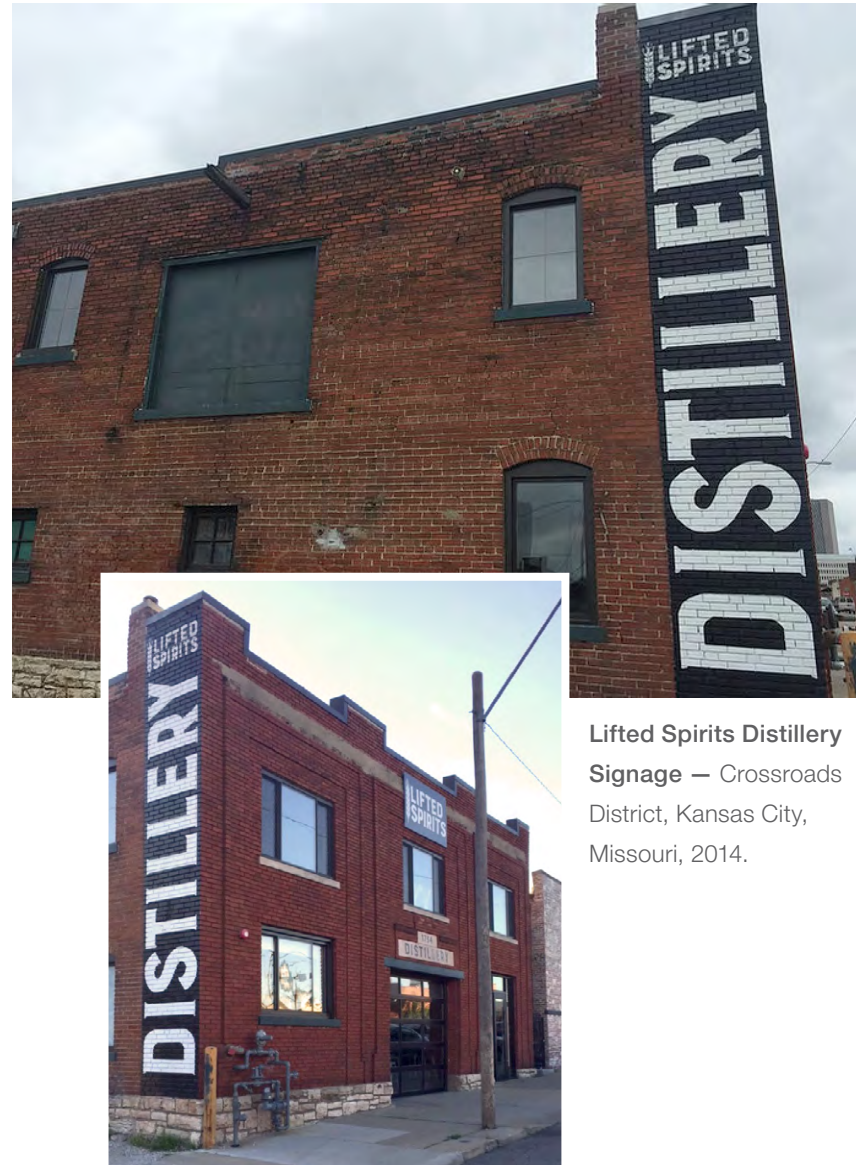
Glass mosaic mural created for the mezzanine level at the Universal City/Studio City Metro Station in Los Angeles, California, 2007-2009.



## Commissioned Signage by Strong Hand Steady Signs



Wonder Fair Storefront Signage — Downtown Lawrence, Kansas, 2016.



Lifted Spirits Distillery Signage — Crossroads District, Kansas City, Missouri, 2014.



## Commissioned Signage by Strong Hand Steady Signs



Freestyle Poké Signage — River Market, Kansas City, Missouri, 2018.



Cottin's Hardware & Rental Christmas Tree Sign — Lawrence, Kansas, 2017.



Jungle House Signage — Delaware Street, Lawrence, Kansas, 2019.



Cottin's Hardware & Rental Farmers Market Sign — Lawrence, Kansas, 2021.





**Stephen T. Johnson's** visually arresting and conceptually rich body of work forges connections between words, objects and ideas. His art spans a broad range of concepts and contexts and can be seen in site-specific public art commissions, gallery and museum exhibitions, and original award-winning children's books such *Alphabet City*, a Caldecott Honor and a *New York Times* Best Illustrated Book of the Year.

His drawings and paintings are in numerous private collections, including those of musician Paul Simon and actress Cherry Jones, and in the permanent collections of Carnegie Mellon University in Pittsburgh Pennsylvania, the New Britain Museum of American Art in Connecticut, and the National Portrait Gallery at the Smithsonian Institution in Washington D.C.

Among his public art is a 70-foot mosaic mural at the DeKalb Avenue Subway Station in Brooklyn New York, a 60-foot mosaic mural at the Universal City Metro Station in North Hollywood, Los Angeles California, and thirty-three glass panels for the Dallas Love Field Airport, in Dallas, Texas. His latest commission was three large glass mosaic murals for the Lenexa City Center Library in metropolitan Kansas City.

To view Stephen's complete catalogue of work, please visit his website at [www.stephentjohnson.com](http://www.stephentjohnson.com).

stephen t **johnson**

785.550.0450

[www.stephentjohnson.com](http://www.stephentjohnson.com)





**Strong Hand Steady Signs** is a side-art-business that was cultivated through the creative efforts of the duo Austin Meyers and Travis Andregg. Midwest-based in Lawrence, Kansas, they specialize in mural work, handpainted signs and lettering. Schooled in design, Travis is skilled with creative ideation and application, while Austin contributes an artistic creativity with a business swagger. For a five-year period, the duo operated Art Emergency, an art studio and gallery in East Lawrence, managing several occupants and curating monthly sows. Their painted creations include storefront windows, menu boards, name plates, murals, large-scale store signage, address plaques and business advertising in schools, businesses, public spaces and private residences throughout Lawrence and Kansas City.

# strong hand **steady signs**

AUSTIN MEYERS & TRAVIS ANDREGG

785.218.0988

[www.stronghandsteadysigns.com](http://www.stronghandsteadysigns.com)