

Memorandum
City of Lawrence
Utilities Department

TO: David L. Corliss – City Manager
Cynthia Wagner - Assistant City Manager
Diane Stoddard - Assistant City Manager
FROM: Mike Lawless – Asst. Director of Utilities
CC: Dave Wagner – Director of Utilities
Ed Mullins – Finance Director
Casey Toomay – Budget Manager
Philip Ciesielski – Asst. Director of Utilities
Jeanette Klamm – Management Analyst
Date: May 29, 2013
RE: 2014 Water and Wastewater Rates

In March of 2013, the City Commission adopted the Water and Wastewater [2013 – 2017 Capital Improvement Program](#) (CIP) for Scenario 5 – Taste, Odor, & Microtoxins, approved the 2013 Water and Wastewater Rates, and approved the Water and Wastewater 2013 – 2017 System Development Charges.

In the months since, staff has prepared and submitted the 2014 Operating and Maintenance Budget request, begun implementation of the 2013 CIP projects, and is in the process of updating the rate model to develop the 2014 water and wastewater rates.

A summary of the 2013 CIP projects currently underway follows.

UT0701: Kaw WTP Transmission Main – Preliminary design is complete and Burns & McDonnell are completing final design. City staff is continuing property acquisition for Phase I. The project is scheduled to be bid during October 2013 with construction completed in May 2014. [Project map](#).

UT1201 & UT1202: Elec/Mech Contract 2 Kaw WTP Electrical and Low Service 2 Improvements; Clinton WTP MCC Replacement, Raw Water Transmission Main Repairs, Filter Influent Pipe and Master Backwash Valve Replacement – Black & Veatch have completed the design and contract documents and the project is out for bid with a June 18, 2013 bid opening. Construction is scheduled to be complete May 2014.

Clinton WTP Concrete Transmission Main Assessments –Staff is negotiating a scope of work with Black & Veatch and Pure Technologies for inspection of the Clinton WTP Raw Water Transmission Main and the Clinton WTP High Service Pumping Transmission Mains. The work is scheduled in conjunction with the Clinton WTP Raw Water Transmission Main Repairs. [Project map](#).

UT1102: Kaw WTP Intake – Black & Veatch have begun the design of the new intake structure and raw water transmission main. The project is scheduled to be bid in October 2013 and construction complete May 2014. [Project map](#).

UT1205: South Lawrence Trafficway Water and Sanitary Sewer Relocations 31st & Haskell – Final design is being completed by HNTB in conjunction with their SLT design work for KDOT. Final plans are to be ready July 2013. The work will be bid and constructed with the KDOT package for the SLT and 31st Street Extension. [Project map](#).

UT1205: South Lawrence Trafficway Water and Sanitary Sewer Relocations 31st & Louisiana – sanitary sewer relocation and watermain extension is under design by HNTB. Final plans are to be completed by July 2013 and the project subsequently bid for construction. Project completion is scheduled for Spring 2014. [Project map](#).

UT1210: K10 and Bob Billings Parkway Interchange Sanitary Sewer Relocations – Preliminary relocation requirements have been identified and laid out by LandPlan. Design will continue pending receipt of updated KDOT plans for the interchange. Construction is proposed in 2 phases with the eastern leg of the sanitary sewer relocated this fall to accommodate the Langston Heights development to the north. The leg crossing K10 to the west is proposed to be constructed with KDOT's interchange project in 2016. [Project map](#).

UT1302: Pump Station PS04 Forcemain – The project is under design by Professional Engineering Consultants to construct a redundant forcemain from Pump Station PS04 in North Lawrence across the Kansas River to the Wastewater Treatment Plant. The project is scheduled to be bid in November 2013 with construction complete April 2014. [Project map](#).

UT1307: Oread Tank Replacement – Staff is currently negotiating scope of services with HDR for the delivery of a design report that would provide operational, construction and cost assessments for replacement of the facilities on three (3) potential sites. Design activities are scheduled through April 2014. The construction period will be dependent on the final alternative selected but would most likely be complete summer 2015. [Project map](#).

UT0919: Miscellaneous Pump Station Reconstruction/Rehabilitation - Projects are substantially complete. City staff is working with the contractor, legal counsel, and contractors insurer to close out the PS15 project including final change order, pay application, and settlement agreement on liquidated damages.

UT1105: 2012-2013 Watermain Rehab Program - Bob Billings Parkway watermain replacement is underway with installation completed from Kasold to just east of Lawrence Avenue. Remaining installation to be completed in two sequences in conjunction with the pavement replacement project and will be complete by August 16, 2013. [Project map](#) for Bob Billings Parkway. Nineteenth Street waterline replacement was awarded to Nowak Construction on May 28, 2013. Anticipated construction start is late June with completion in early October of 2013. [Project map](#) for 19th Street.

The 2012-2013 Watermain Rehab Assessment Report has been reviewed and comments returned to PEC, final document to be delivered the week of May 27, 2013. Immediately following the acceptance of the report, staff will initiate design for replacement of the waterline on North Iowa Street from Riverridge to Lakeview and on 23rd Street from Iowa to Ousdahl and Alabama to Louisiana. Construction of these two projects is planned for late 2013 and early 2014, respectively. [Project maps](#).

UT1206: O'Connell Road Watermain Extension - Installation of the 4" line for RWD#4 is complete with the exception of testing and final connections. Installation of the transmission line down O'Connell Road and under the Wakarusa River will commence the week of June 03, 2013. Fill has been placed and footings/foundation installed for the metering station building. Construction is planned to be complete by July 24, 2013 in advance of construction activities associated with the completion of K-10. [Project map](#).

PW1012: Iowa Street Reconstruction - Waterline installation is ongoing and sanitary sewer work has commenced. Work is being completed in conjunction with the reconstruction of 15th Street and Iowa Street and is planned to be complete no later than August 16, 2013. [Project map](#).

UT1305: Rapid Inflow & Infiltration Reduction Program – The 2012 Wastewater Master Plan and Capital Improvements Program recommends the implementation of a Rapid Inflow and Infiltration (I/I) Reduction Program. The Rapid I/I Program will study, rehabilitate, and monitor the public and private sanitary sewer systems in the identified area. Staff is currently negotiating a scope of services with TREKK Design Group for this project. [Project area map](#).

UT1212: 2013 Cured-In-Place-Pipe (CIPP) - Part of the Utilities Department's efforts at reducing inflow and infiltration (I/I) is to repair/reconstruct existing sewer lines that are a source of I/I. CIPP is one of the methods used. The CIPP method involves lining the inside of vitrified clay pipe sanitary sewer mains without excavation. The 2013 CIPP Project will line approximately 17,400 feet of sanitary sewer main. The project was awarded to Layne Inliner with a pre-construction meeting held on May 30, 2013. The project will begin in mid-July and be complete in early October. [Project map](#).

UT1211: Clinton Filter Media Rehabilitation - The Clinton Reservoir Water Treatment Plant has eight dual media (sand, anthracite) gravity filters. After plant operators observed filter run times and performance decreasing, a study was completed that determined the sand and anthracite media needed to be replaced. RK Hydro-Vac is under contract to perform this work and to date has replaced the sand and anthracite in two filters. Upon beginning the third and fourth filters, it was discovered that the gravel media also needed to be replaced. Gravel was ordered for the remaining six filters and was delivered the week of May 20th. The contractor is completing filters three and four. August 1, 2013 is the project completion date.

UT1209: Taste and Odor Study - The project will evaluate drinking water treatment processes that will enhance the removal of taste and odor compounds, microtoxins, and viruses at the Clinton and Kaw water treatment plants. The

work includes water testing and analysis; evaluation of existing plant processes; evaluation of additional treatment processes, and existing process modifications; estimated capital, and operational and maintenance costs of proposed options; and the present worth value of the proposed options. Burns & McDonnell has begun the water process analysis. Project completion is scheduled for the end of this year.

UT1304 & UT1306: Wakarusa Wastewater Treatment Plant and Conveyance - The 2012 Wastewater Utilities Master Plan and Capital Improvements Program recommend the construction of the Wakarusa Wastewater Treatment Plant (WWTP) and Conveyance Corridor facilities to be online in 2018. These improvements are required to mitigate wet weather surcharging of sanitary sewers along the 31st Street Corridor, provide for relief of wet weather overloading at the existing WWTP, and provide additional organic treatment capacity to provide for future growth of the community. Interviews with consulting firms that submitted proposals are complete. Staff expects to make a recommendation on the selected consultant for each project at a City Commission Meeting in June. [Project map](#).

Once a year the Water and Wastewater Rate Model is updated to reflect the end of the previous year water and wastewater sales, expenditures, revenues, debt service, and depreciation along with other additional data. This is the starting point to develop the water and wastewater rates for the next year. Much of the 2012 end of the year data is in the model but minor adjustments are still in process.

While the adjustments are being finalized, model runs are made to provide a preliminary look at the 2014 water and wastewater rates that will continue implementation of the 2013 – 2017 CIP. The preliminary 2014 rates in the attached [table](#) compare them to the 2014 projected rates prepared for the adopted 2013 – 2017 CIP. The rates shown in black are the projected values and the preliminary 2014 rates are in red. The preliminary 2014 rates reflect the end of the year 2012 data while the projected 2013 to 2017 rates are based on data from end of the year 2011. A comparison of water and wastewater utility bills for existing rates and the preliminary 2014 rates for the different rates classes and volumes is shown on the attached [table](#).

Once the model data is finalized, the recommended 2014 water and wastewater rates will be generated. Staff does not believe there will be significant changes between the preliminary and recommended 2014 rates. An ordinance with the recommended 2014 rates will be submitted for Commission consideration at the July 23rd City Commission Meeting.

No Commission action is necessary for the 2014 System Development Charges. [Ordinance 8847](#) approved the 2013 to 2017 System Development Charges (SDCs). On January 1, 2014, the 2014 SDCs go into effect.

**2013 CIP Scenario 5 - Taste, Odor, & Microtoxins
10/22/2012**

Water CIP

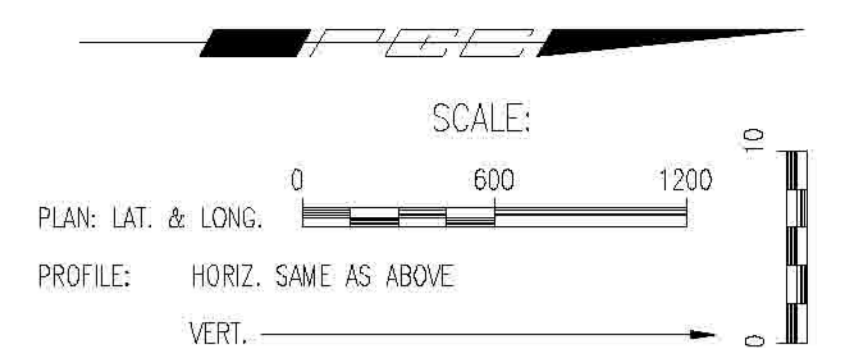
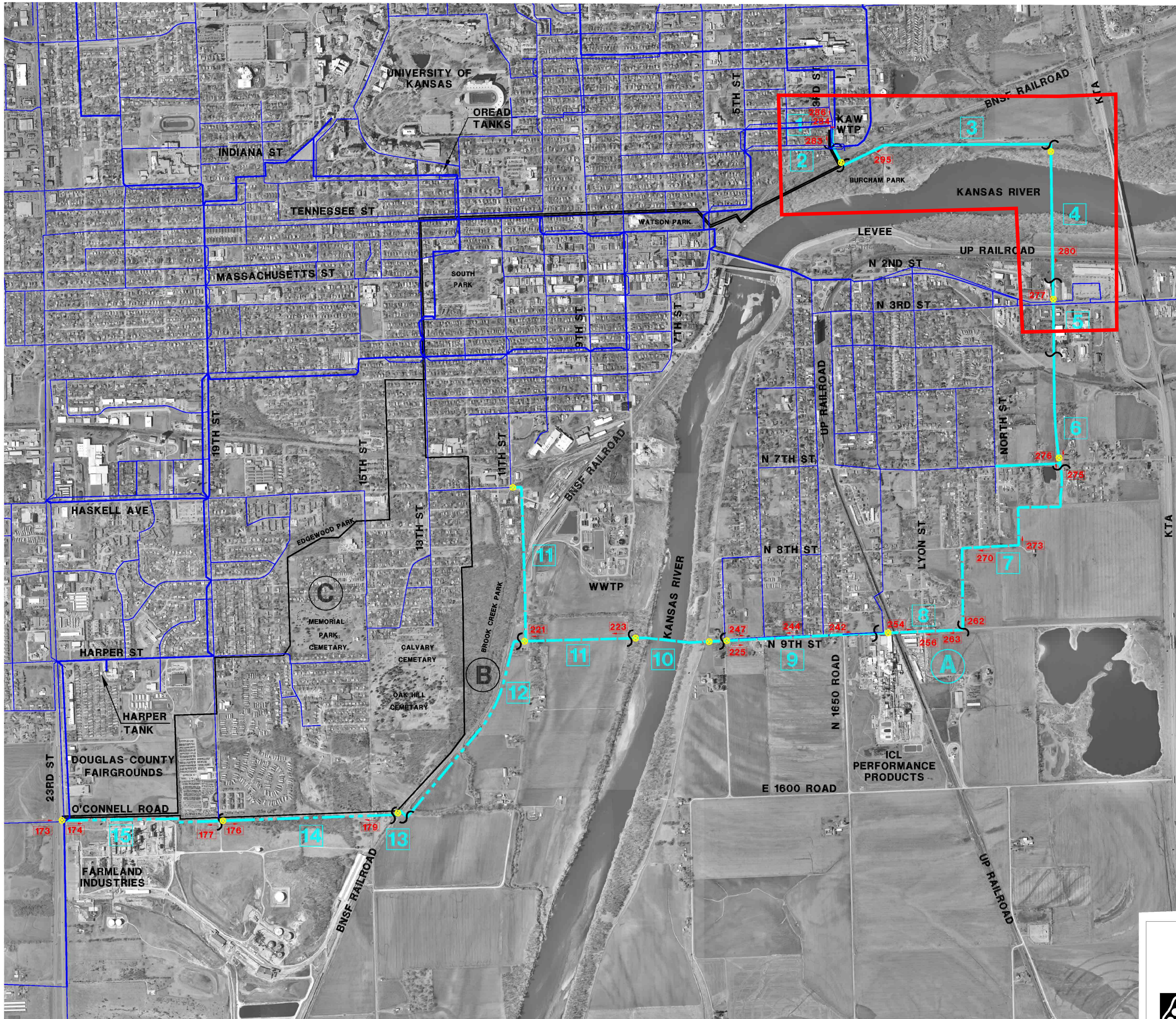
Line No.	Description	2012	2013	2014	2015	2016	2017	Total	2018
		\$	\$	\$	\$	\$	\$	\$	\$
1	Kaw WTP Supply Improvements (a) (c)		4,770,500					4,770,500	
2	Oread Storage & BPS Replacement (c)		1,248,000	2,704,600				3,952,600	
3	19th & Kasold Pump Station (b) (c)			411,000				411,000	
4	Harper Booster Pump Station (b) (c)		624,000					624,000	
5	Tower Protective Coatings (c)		1,040,000			1,684,600	876,000	3,600,600	
6	Kaw 36" WM to North Lawrence (One 30" river crossings) - Phase 1 (a) (c)		7,836,400				0	7,836,400	0
7	Concrete Main Assessment (c)			648,960			0	648,960	0
8	Pipeline Replacement Program (c)	0	2,338,600	2,432,100	2,529,400	2,630,600	2,735,800	12,666,500	2,845,200
9	Water Main Relocation for Road Projects (a)		1,985,000	500,000	520,000	540,800	562,400	4,108,200	584,900
10	Small Water Main Replacement Program (c)	0	968,500	1,007,200	1,047,500	1,089,400	1,133,000	5,245,600	1,178,300
11	Kaw Structural, Electrical, Process (b) (c)		723,800	811,200		166,700		1,701,700	
12	Clinton Intake (a) (c)	0	0	1,297,900	517,400			1,815,300	
13	Clinton Process (b) (c)			108,200		187,200		295,400	
14	Clinton Basin Coatings (c)						1,374,800	1,374,800	
15	Plant Maintenance (c)		150,000	156,000	600,000	624,000	649,000	2,179,000	675,000
16	31st St. - extend 12" to O'Connell (a)		685,400					685,400	
17	31st St. & O'Connell - Extend 16" to WWTP (includes River crossing) (a)		1,852,700					1,852,700	
18	Taste & Odor and Microtoxins at Clinton & Kaw WTPs		1,440,000	17,900,000				19,340,000	
19	Bowersock Dam Improvements (c)		425,000					425,000	
20	Clinton Backup Generator (15MGD) (a) (c)				849,300			849,300	
22	Total	0	26,087,900	27,977,160	6,063,600	6,923,300	7,331,000	74,382,960	5,283,400

- (a) Project required to meet anticipated growth related requirements.
- (b) Project required by EPA and KDHE regulations.
- (c) Project required to improve system reliability or transmission capacity.

Wastewater CIP

Line No.	Description	2012	2013	2014	2015	2016	2017	Total	2018
		\$	\$	\$	\$	\$	\$	\$	\$
Collection System									
1	PS 32 Expansion & Force Main (a)		832,000					832,000	
2	21" Gravity Sewer to Eliminate PS 8 (c)						425,800	425,800	4,002,800
3	KR-5B 12" Relief Sewer (c)		0				973,300	973,300	
	KR-6B 21" Relief Sewer (c)	0	0					0	885,700
4	PS 23 Expansion (a) (c)	0	208,000	0				208,000	
5	Rapid I/I Reduction Program (b) (c)		1,872,000	2,720,200	2,829,000	2,942,200	3,059,900	13,423,300	3,182,300
6	Sewer Rehabilitation, Replacement, CIPP & MHs		416,000	432,600	449,900	467,900	486,700	2,253,100	1,265,300
8	Subtotal	0	3,328,000	3,152,800	3,278,900	3,410,100	4,945,700	18,115,500	9,336,100
Treatment System									
Kansas River WWTP									
9	Co-generation & Backup Power		600,000	481,600				1,081,600	
Wakarusa River WWTP									
10	Wakarusa River WWTP Treatment Plant (a) (b)	0	3,784,000	6,489,600	10,686,200	11,698,600	2,920,000	35,578,400	
11	Wakarusa Peak Flow Storage (a) (b)		499,200		2,249,700	3,509,600	632,700	6,891,200	
12	Roads & Utilities (a) (b)		499,200	2,995,200	3,125,000			6,619,400	
13	Wakarusa PS 5C, 2 - 16" Force Mains (a) (b)		924,600	5,408,000	5,624,300	2,118,600		14,075,500	
15	Subtotal	0	6,307,000	15,374,400	21,685,200	17,326,800	3,552,700	64,246,100	0
Other									
16	General Pumping Station Improvements (c)		100,000	104,000	108,200	112,500	117,000	541,700	121,700
17	General WWTP Improvements (c)		300,000	312,000	324,500	337,500	351,000	1,625,000	365,000
18	Sanitary Sewer Relocations (a)		1,000,000	312,000	500,000	337,500	351,000	2,500,500	365,000
20	Subtotal	0	1,400,000	728,000	932,700	787,500	819,000	4,667,200	851,700
22	Total	0	11,035,000	19,255,200	25,896,800	21,524,400	9,317,400	87,028,800	10,187,800

- (a) Project required to meet anticipated growth related requirements.
- (b) Project required by EPA and KDHE regulations.
- (c) Project required to improve system reliability or transmission capacity.



SEGMENT ID	LENGTH	SIZE	DESCRIPTION	CONST. COST
A1	250'	36"	KAW WTP exit & 3rd Street	\$151,850.00
A2	400'	36"	BNSF RR Crossing by boring @ KAW WTP	\$277,500.00
A3	3,750'	36"	Burcham Park	\$1,087,040.00
A4	2,300'	30"	Kansas River & UP RR Crossing by HDD	\$1,704,600.00
A5	1,200'	36"	N. 2nd Street Commercial Area	\$505,000.00
A6	1,650'	36"	—	\$558,750.00
PHASE I TOTAL	9,550'			\$4,284,740.00
A7	4,480'	36"	—	\$1,234,100.00
A8	1,770'	36"	9th Street & UP RR Crossing by boring	\$559,630.00
A9	2,550'	30"	N 9th Street	\$658,730.00
A10	1,550'	30"	Kansas River Crossing by HDD	\$1,201,050.00
A11	1,840' 2,730'	36" 24"	—	\$935,390.00
PHASE II TOTAL	14,920'			\$4,588,900.00
A12	3,570'	30"	Parallel to BNSF RR	\$919,700.00
A13	200'	30"	BNSF RR Crossing by boring	\$152,700.00
A14	2,800'	30"	Open area of Farmland Industries	\$646,740.00
A15	2,800'	30"	O'Connell RD	\$638,600.00
PHASE III TOTAL	9,370'			\$2,257,740.00
ROUTE A TOTAL	33,840'			\$11,131,380.00

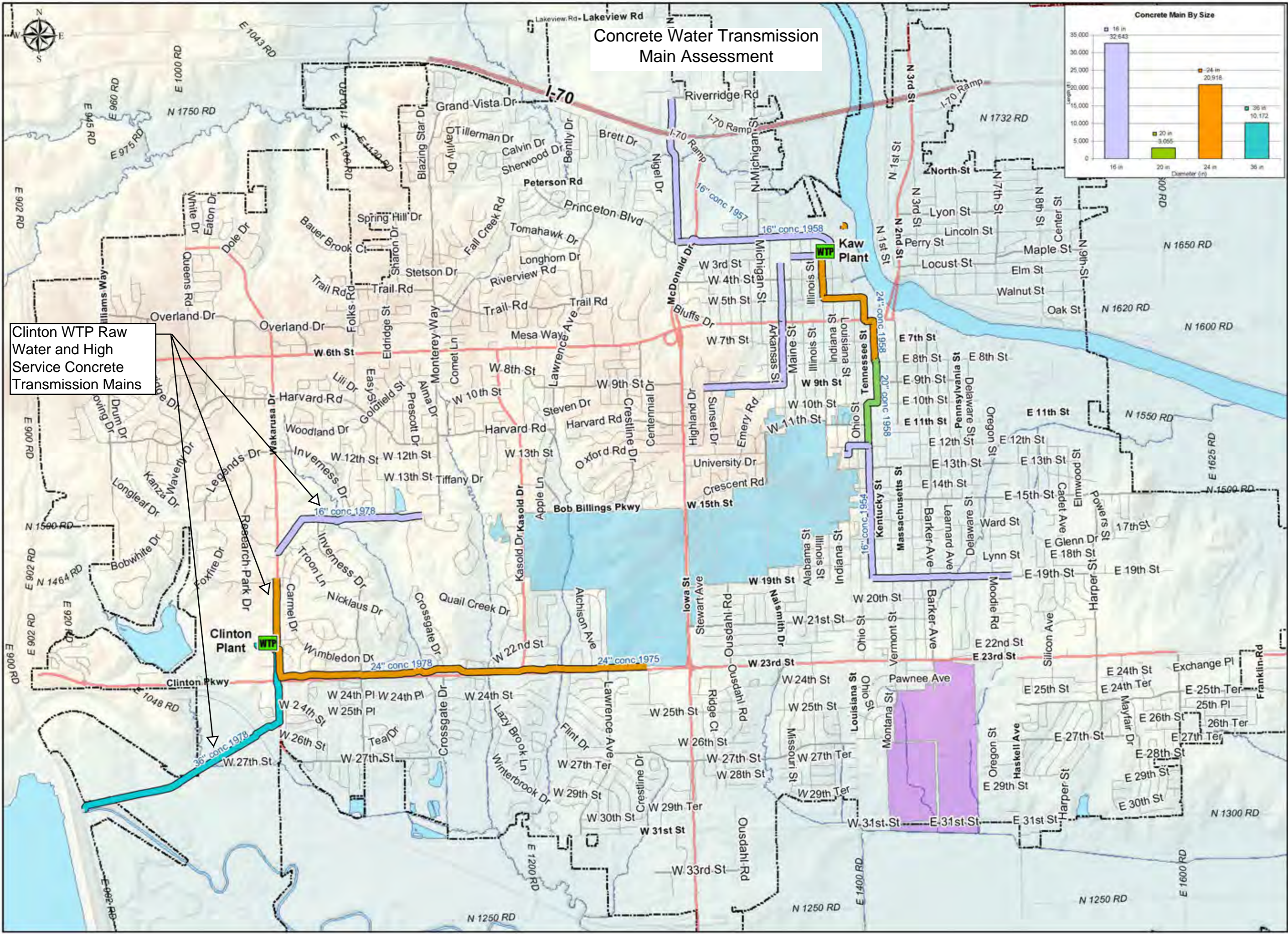
LEGEND

- PHASE I (1-6)
- PHASE II (7-11)
- PHASE III (12-15)
- VALVE & CONNECTION
- ID NO.
- SEGMENT SEPARATOR
- EXISTING DISTRIBUTION SYSTEM (< 14)
- EXISTING DISTRIBUTION SYSTEM (> 16)
- PHOTO ID NO.

EXHIBIT IV-1

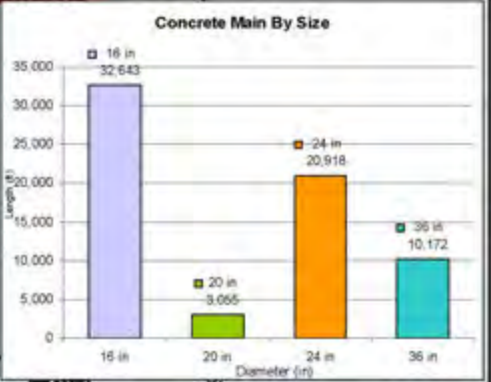
No.	Revision	By	Date
SE WATER TRANSMISSION MAIN ROUTE A ALIGNMENT & DETAILS			
Professional Engineering Consultants, P.A.			
<small>1263 S.W. TOPEKA BLVD. • TOPEKA, KANSAS 66612 785-233-8300 • FAX 785-233-8855</small>			
Designed by	AMD	Job No.	06A01
Drawn by	CT	Date	DEC. 2006
			Shl. 1 of 1

SHEET 02 OF 11
 10/24/06 11:11 AM
 P:\2006\0601\TOPEKA\ROUTE A



Concrete Water Transmission Main Assessment

Clinton WTP Raw Water and High Service Concrete Transmission Mains



Water Distribution System Concrete Transmission Mains

Legend

Concrete Transmission Main Diameter

- 16 inch
- 20 inch
- 24 inch
- 36 inch
- WTP Treatment Plant
- City Limit
- Haskell Indian Nations University
- University of Kansas
- Water Bodies

DISCLAIMER NOTICE

The data is provided "as is" without warranty or any representation of accuracy, timeliness or completeness. The burden for determining accuracy, completeness, timeliness, merchantability and fitness for or the appropriateness for use rests solely on the requester. The City of Lawrence makes no warranties, express or implied, as to the use of the Data. There are no implied warranties of merchantability or fitness for a particular purpose. The requester acknowledges and accepts the limitations of the Data, including the fact that the Data is dynamic and is in a constant state of maintenance, correction and update.



UT1102KA Kaw Water Treatment Plant Raw Water Intake



Approximate Location of New Intake



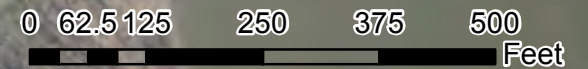
Operational Intake to be Modified

Failed Intakes to be Removed

Kaw Water Treatment Plant

DISCLAIMER NOTICE

The map is provided "as is" without warranty or any representation of accuracy, timeliness or completeness. The burden for determining accuracy, completeness, timeliness, merchantability and fitness for or the appropriateness for use rests solely on the requester. The City of Lawrence makes no warranties, express or implied, as to the use of the map. There are no implied warranties of merchantability or fitness for a particular purpose. The requester acknowledges and accepts the limitations of the map, including the fact that the map is dynamic and is in a constant state of maintenance, correction and update.



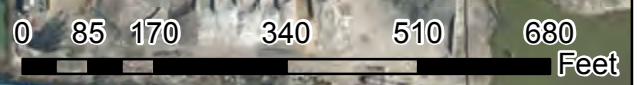
UT1205 South Lawrence Trafficway Water and Sanitary Sewer Relocations



Extents of Potential Sanitary Sewer Relocation

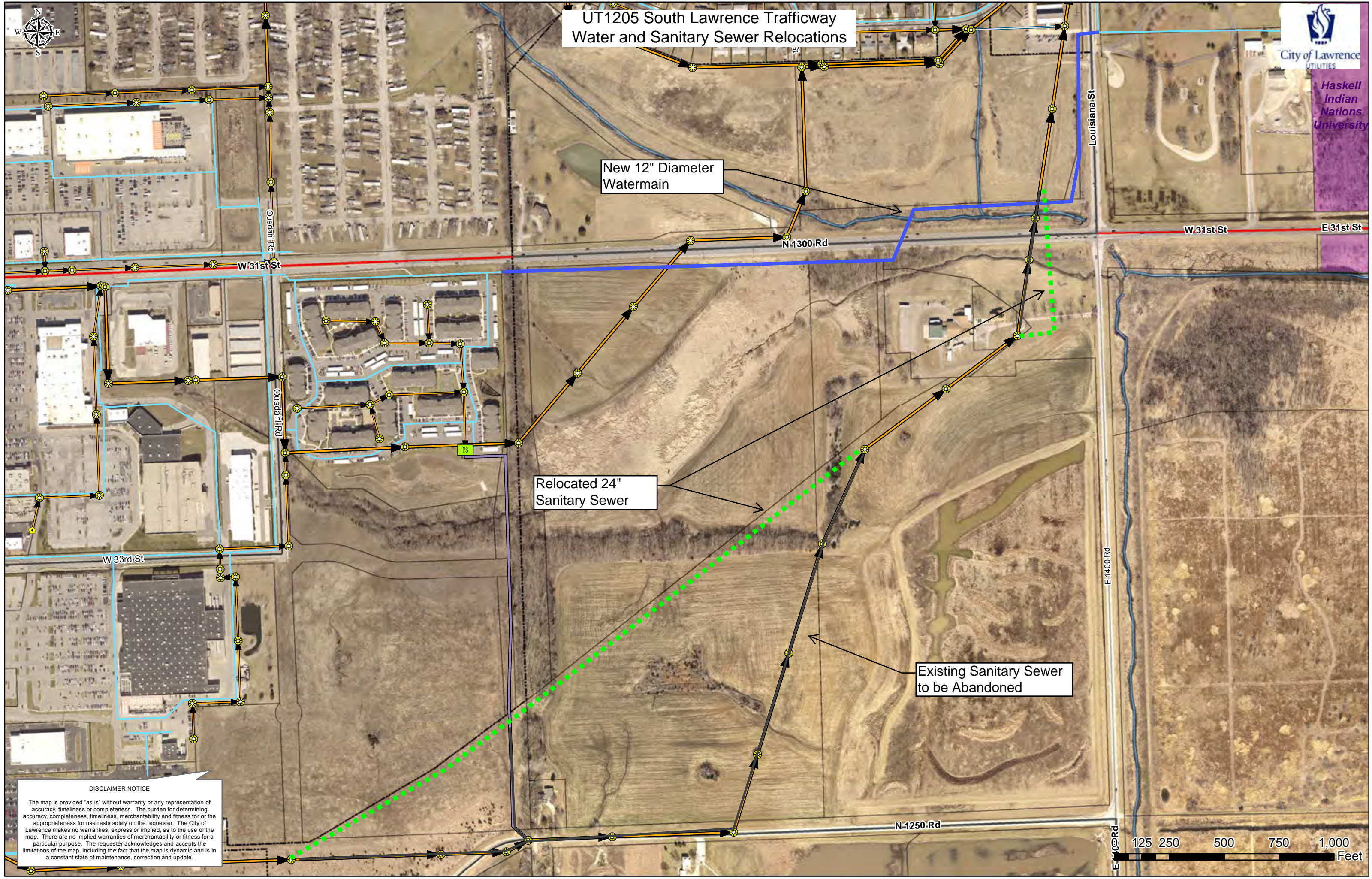
Extents of Potential Watermain Relocation

DISCLAIMER NOTICE
The map is provided "as is" without warranty or any representation of accuracy, timeliness or completeness. The burden for determining accuracy, completeness, timeliness, merchantability and fitness for or the appropriateness for use rests solely on the requester. The City of Lawrence makes no warranties, express or implied, as to the use of the map. There are no implied warranties of merchantability or fitness for a particular purpose. The requester acknowledges and accepts the limitations of the map, including the fact that the map is dynamic and is in a constant state of maintenance, correction and update.





UT1205 South Lawrence Trafficway Water and Sanitary Sewer Relocations

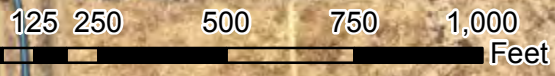


New 12" Diameter
Watermain

Relocated 24"
Sanitary Sewer

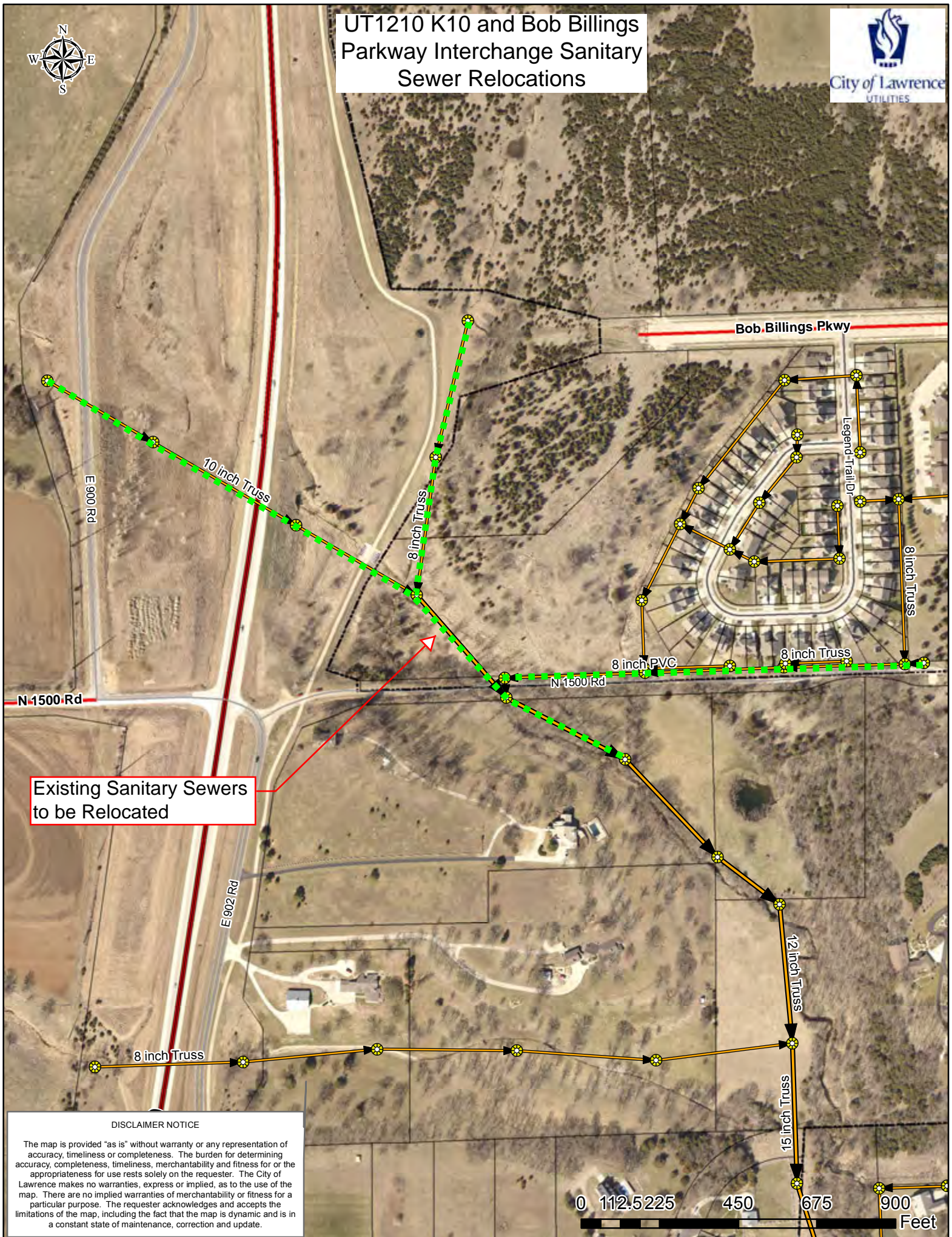
Existing Sanitary Sewer
to be Abandoned

DISCLAIMER NOTICE
The map is provided "as is" without warranty or any representation of accuracy, timeliness or completeness. The burden for determining accuracy, completeness, timeliness, merchantability and fitness for or the appropriateness for use rests solely on the requester. The City of Lawrence makes no warranties, express or implied, as to the use of the map. There are no implied warranties of merchantability or fitness for a particular purpose. The requester acknowledges and accepts the limitations of the map, including the fact that the map is dynamic and is in a constant state of maintenance, correction and update.





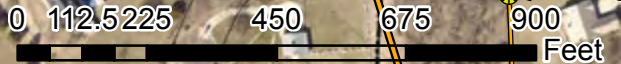
UT1210 K10 and Bob Billings Parkway Interchange Sanitary Sewer Relocations



Existing Sanitary Sewers to be Relocated

DISCLAIMER NOTICE

The map is provided "as is" without warranty or any representation of accuracy, timeliness or completeness. The burden for determining accuracy, completeness, timeliness, merchantability and fitness for or the appropriateness for use rests solely on the requester. The City of Lawrence makes no warranties, express or implied, as to the use of the map. There are no implied warranties of merchantability or fitness for a particular purpose. The requester acknowledges and accepts the limitations of the map, including the fact that the map is dynamic and is in a constant state of maintenance, correction and update.





Project UT1302CS PS04 Redundant Forcemain



Pump Station PS04

**Location of Exposed
8" Forcemain**

8" Forcemain

18" Forcemain

Discharge at WWTP

DISCLAIMER NOTICE
The map is provided "as is" without warranty or any representation of accuracy, timeliness or completeness. The burden for determining accuracy, completeness, timeliness, merchantability and fitness for or the appropriateness for use rests solely on the requester. The City of Lawrence makes no warranties, express or implied, as to the use of the map. There are no implied warranties of merchantability or fitness for a particular purpose. The requester acknowledges and accepts the limitations of the map, including the fact that the map is dynamic and is in a constant state of maintenance, correction and update.

0 62.5 125 250 375 500 Feet



W-12th St



Oread Water Storage Tanks and Booster Pump Station

1954 Tank
1,300,000 Gallons

Oread Ave

Louisiana St

1931 Tank
1,000,000 Gallons

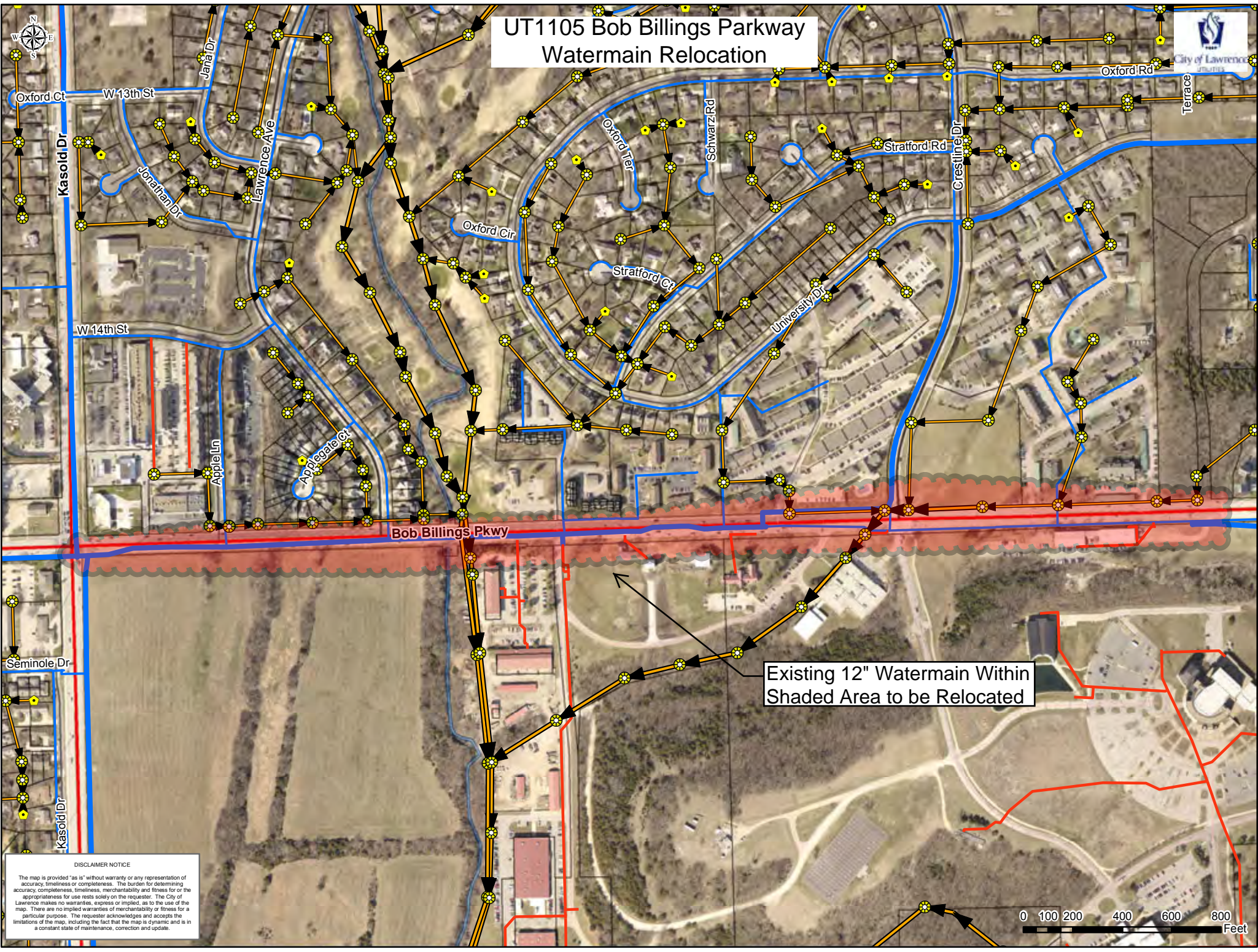
Booster Pump Stn

DISCLAIMER NOTICE

The map is provided "as is" without warranty or any representation of accuracy, timeliness or completeness. The burden for determining accuracy, completeness, timeliness, merchantability and fitness for or the appropriateness for use rests solely on the requester. The City of Lawrence makes no warranties, express or implied, as to the use of the map. There are no implied warranties of merchantability or fitness for a particular purpose. The requester acknowledges and accepts the limitations of the map, including the fact that the map is dynamic and is in a constant state of maintenance, correction and update.



UT1105 Bob Billings Parkway Watermain Relocation



DISCLAIMER NOTICE
The map is provided "as is" without warranty or any representation of accuracy, timeliness or completeness. The burden for determining accuracy, completeness, timeliness, merchantability and fitness for or the appropriateness for use rests solely on the requester. The City of Lawrence makes no warranties, express or implied, as to the use of the map. There are no implied warranties of merchantability or fitness for a particular purpose. The requester acknowledges and accepts the limitations of the map, including the fact that the map is dynamic and is in a constant state of maintenance, correction and updates.

Existing 12" Watermain Within Shaded Area to be Relocated



UT1105 19th Street Watermain Replacement

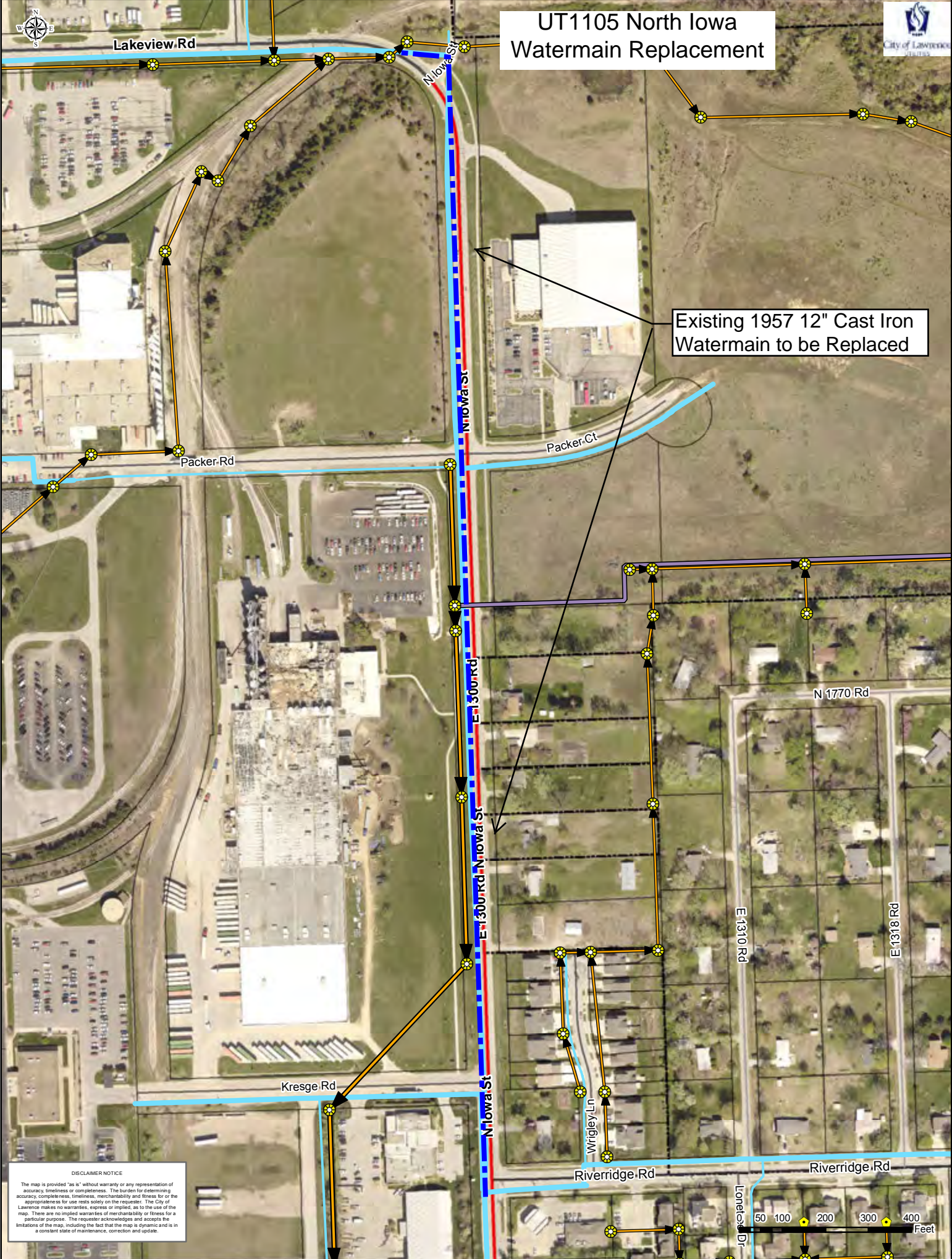
Existing 1954 12" Cast Iron
Watermain to be Replaced



DISCLAIMER NOTICE
The map is provided "as is" without warranty or any representation of accuracy, timeliness or completeness. The burden for determining accuracy, completeness, timeliness, merchantability and fitness for or the appropriateness for use rests solely on the requester. The City of Lawrence makes no warranties, express or implied, as to the use of the map. There are no implied warranties of merchantability or fitness for a particular purpose. The requester acknowledges and accepts the limitations of the map, including the fact that the map is dynamic and is in a constant state of maintenance, correction and update.



UT1105 North Iowa Watermain Replacement



Existing 1957 12" Cast Iron Watermain to be Replaced

DISCLAIMER NOTICE
The map is provided "as is" without warranty or any representation of accuracy, timeliness or completeness. The burden for determining accuracy, completeness, timeliness, merchantability and fitness for or the appropriateness for use rests solely on the requester. The City of Lawrence makes no warranties, express or implied, as to the use of the map. There are no implied warranties of merchantability or fitness for a particular purpose. The requester acknowledges and accepts the limitations of the map, including the fact that the map is dynamic and is in a constant state of maintenance, correction and update.

50 100 200 300 400 Feet



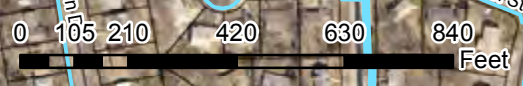
UT1105 23rd Street Watermain Replacement Phase I



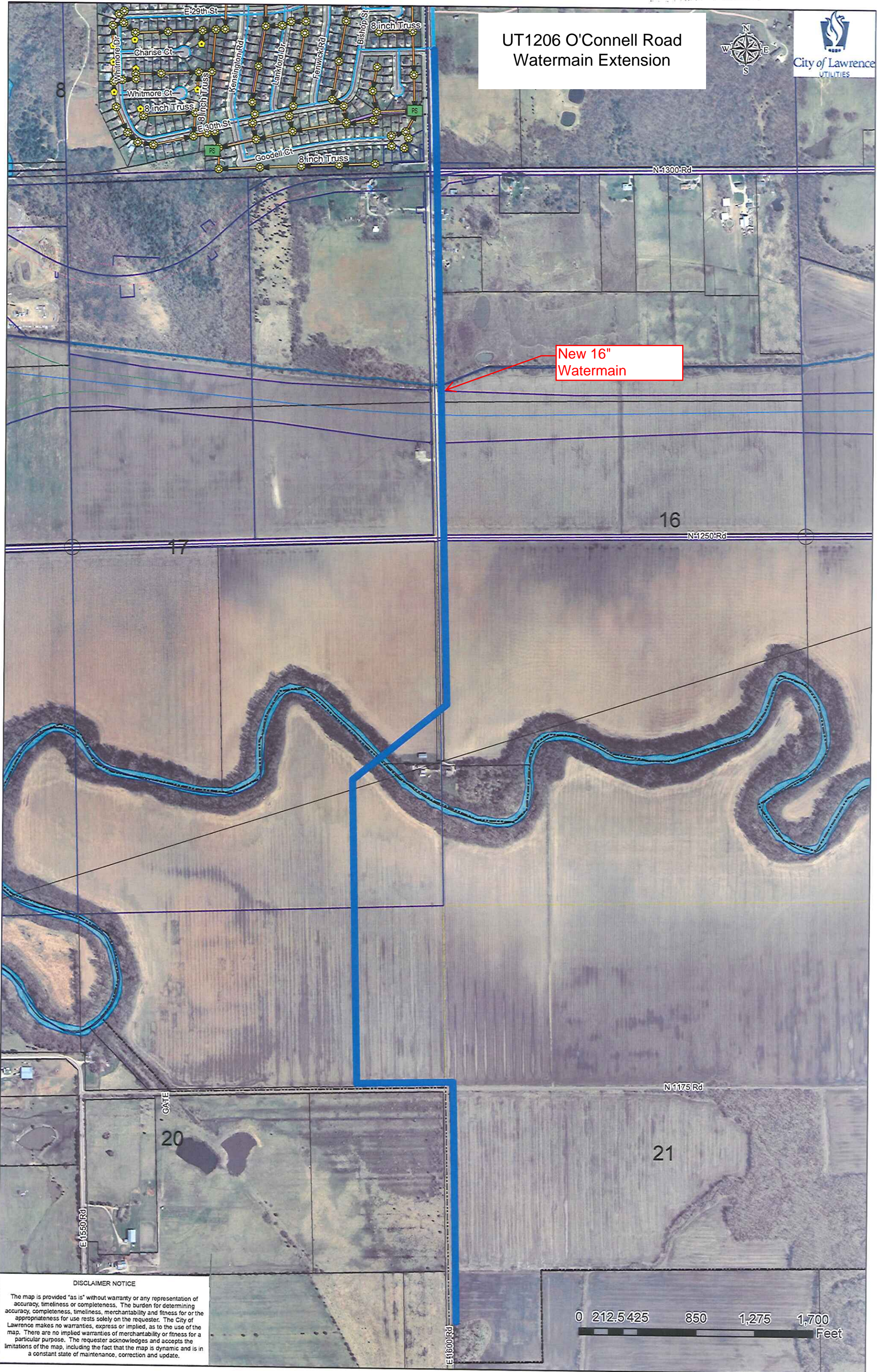
1978 8" PVC Watermain to be Replaced

1954 8" Cast Iron Watermain to be Replaced

DISCLAIMER NOTICE
 The map is provided "as is" without warranty or any representation of accuracy, timeliness or completeness. The burden for determining accuracy, completeness, timeliness, merchantability and fitness for or the appropriateness for use rests solely on the requester. The City of Lawrence makes no warranties, express or implied, as to the use of the map. There are no implied warranties of merchantability or fitness for a particular purpose. The requester acknowledges and accepts the limitations of the map, including the fact that the map is dynamic and is in a constant state of maintenance, correction and update.



UT1206 O'Connell Road
Watermain Extension



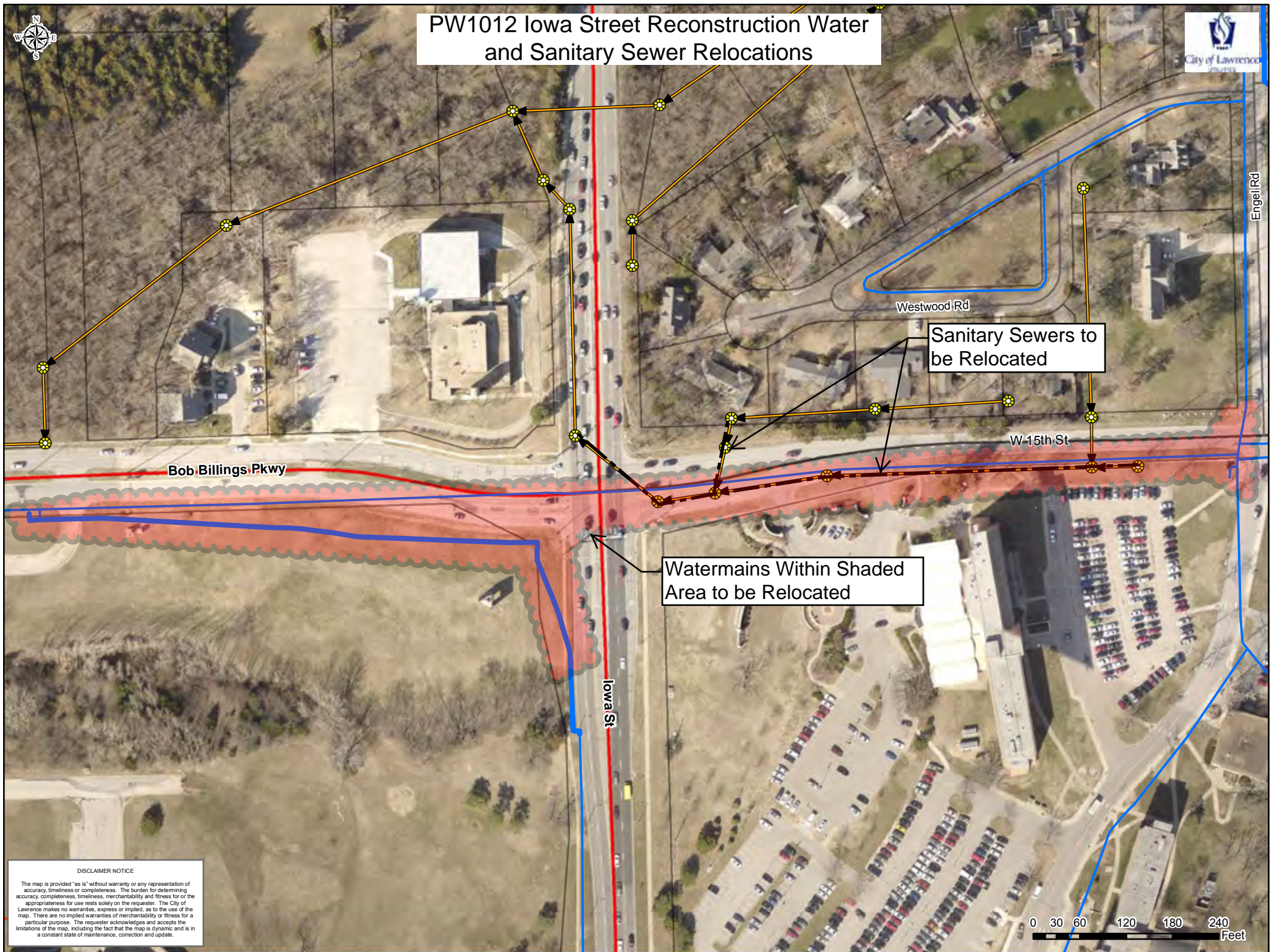
DISCLAIMER NOTICE

The map is provided "as is" without warranty or any representation of accuracy, timeliness or completeness. The burden for determining accuracy, completeness, timeliness, merchantability and fitness for or the appropriateness for use rests solely on the requester. The City of Lawrence makes no warranties, express or implied, as to the use of the map. There are no implied warranties of merchantability or fitness for a particular purpose. The requester acknowledges and accepts the limitations of the map, including the fact that the map is dynamic and is in a constant state of maintenance, correction and update.





PW1012 Iowa Street Reconstruction Water and Sanitary Sewer Relocations



Sanitary Sewers to be Relocated

Watermains Within Shaded Area to be Relocated

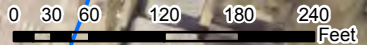
Bob Billings Pkwy

Westwood Rd

W 15th St

Iowa St

Engel Rd



DISCLAIMER NOTICE
 The map is provided "as is" without warranty or any representation of accuracy, timeliness or completeness. The burden for determining accuracy, completeness, timeliness, merchantability and fitness for or the appropriateness for use rests solely on the requester. The City of Lawrence makes no warranties, express or implied, as to the use of the map. There are no implied warranties of merchantability or fitness for a particular purpose. The requester acknowledges and accepts the limitations of the map, including the fact that the map is dynamic and is in a constant state of maintenance, correction and updates.

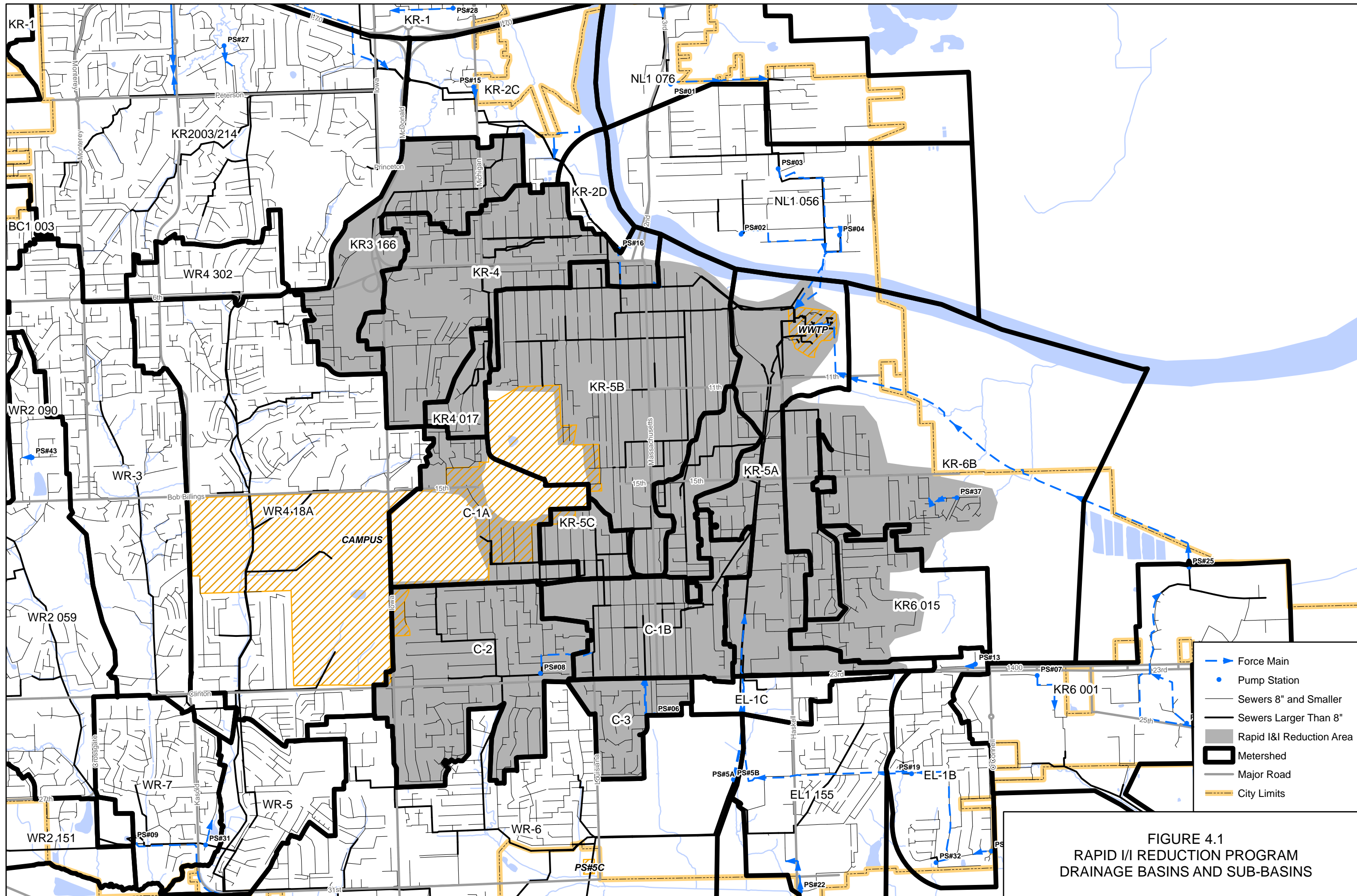
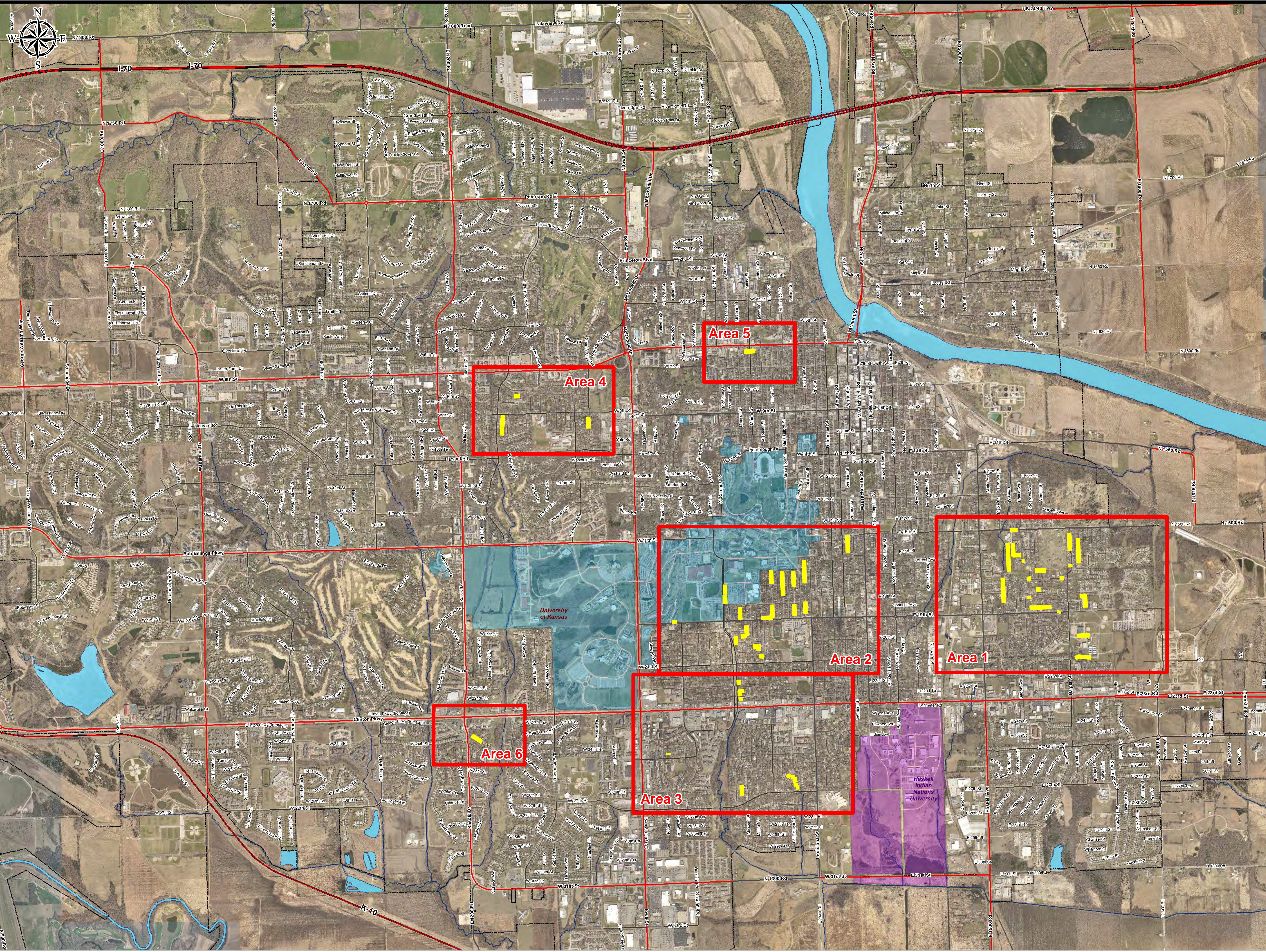


FIGURE 4.1
 RAPID I/I REDUCTION PROGRAM
 DRAINAGE BASINS AND SUB-BASINS



City of Lawrence
UTILITIES

2013 Sanitary CIPP Lining Program

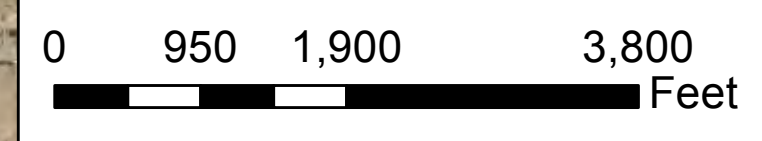
Project 1 Overview

Legend

- 2013 CIPP Project 1
- City Limit

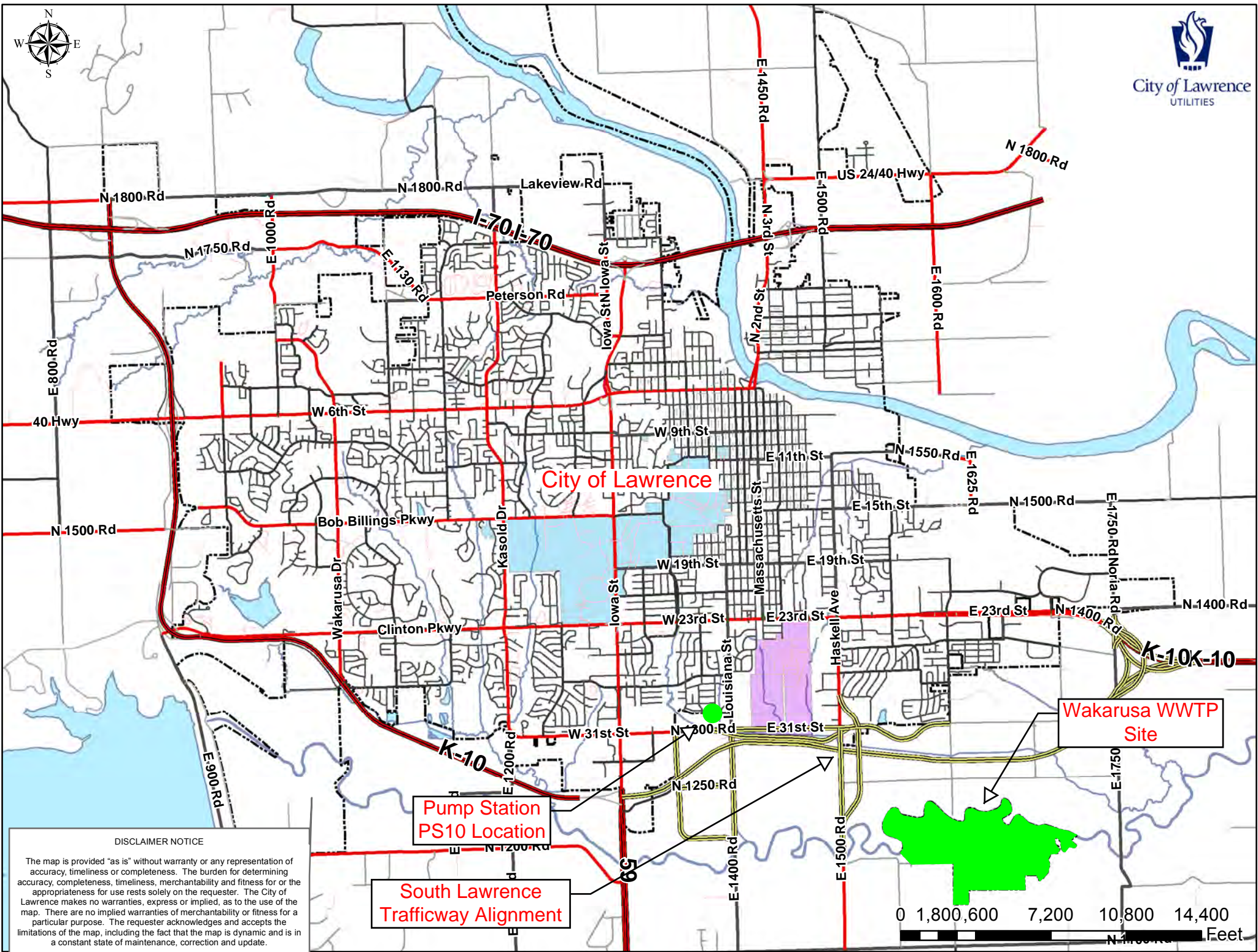
Universities

- Haskell University
- University of Kansas
- Water Bodies



DISCLAIMER NOTICE

The map is provided "as is" without warranty or any representation of accuracy, timeliness or completeness. The burden for determining appropriateness for use rests solely on the requester. The City of Lawrence makes no warranties, express or implied, as to the use of the map. There are no implied warranties of merchantability or fitness for a particular purpose. The requester acknowledges and accepts the limitations of the map, including the fact that the map is dynamic and is in a constant state of maintenance, correction and update.



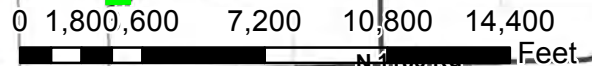
DISCLAIMER NOTICE

The map is provided "as is" without warranty or any representation of accuracy, timeliness or completeness. The burden for determining accuracy, completeness, timeliness, merchantability and fitness for or the appropriateness for use rests solely on the requester. The City of Lawrence makes no warranties, express or implied, as to the use of the map. There are no implied warranties of merchantability or fitness for a particular purpose. The requester acknowledges and accepts the limitations of the map, including the fact that the map is dynamic and is in a constant state of maintenance, correction and update.

**Pump Station
PS10 Location**

**South Lawrence
Trafficway Alignment**

**Wakarusa WWTP
Site**



Scenario 5

Taste, Odor, & Toxins

**Comparison of Typical Monthly Bills
Under Existing and Preliminary 2014 Rates**

Meter Size Inches	Monthly Usage 1,000 gal.	Existing			Preliminary 2014			Total Increase \$	Percent Increase
		Water	Wastewater	Combined	Water	Wastewater	Combined		
		\$	\$	\$	\$	\$	\$		
Residential									
5/8	0	3.15	10.20	13.35	3.25	10.78	14.03	0.68	5.1%
5/8	1	7.33	15.31	22.64	7.78	16.00	23.78	1.14	5.0%
5/8	2	11.51	20.42	31.93	12.31	21.22	33.53	1.60	5.0%
5/8	4	19.87	30.64	50.51	21.37	31.66	53.03	2.52	5.0%
5/8	6	28.23	40.86	69.09	30.43	42.10	72.53	3.44	5.0%
5/8	10	44.95	61.30	106.25	48.55	62.98	111.53	5.28	5.0%
5/8	15	65.85	86.85	152.70	71.20	89.08	160.28	7.58	5.0%
5/8	20	86.75	112.40	199.15	93.85	115.18	209.03	9.88	5.0%
Multifamily									
5/8	0	3.15	10.20	13.35	3.25	10.78	14.03	0.68	5.1%
5/8	1	6.41	15.31	21.72	6.59	16.00	22.59	0.87	4.0%
5/8	2	9.67	20.42	30.09	9.93	21.22	31.15	1.06	3.5%
5/8	4	16.19	30.64	46.83	16.61	31.66	48.27	1.44	3.1%
5/8	6	22.71	40.86	63.57	23.29	42.10	65.39	1.82	2.9%
5/8	10	35.75	61.30	97.05	36.65	62.98	99.63	2.58	2.7%
5/8	15	52.05	86.85	138.90	53.35	89.08	142.43	3.53	2.5%
5/8	20	68.35	112.40	180.75	70.05	115.18	185.23	4.48	2.5%
Commercial									
2	50	172.00	265.70	437.70	186.10	271.78	457.88	20.18	4.6%
2	100	338.50	521.20	859.70	366.10	532.78	898.88	39.18	4.6%
3	200	681.50	1,032.20	1,713.70	738.00	1,054.78	1,792.78	79.08	4.6%
3	300	1,014.50	1,543.20	2,557.70	1,098.00	1,576.78	2,674.78	117.08	4.6%
4	500	1,684.50	2,565.20	4,249.70	1,822.50	2,620.78	4,443.28	193.58	4.6%
4	1000	3,349.50	5,120.20	8,469.70	3,622.50	5,230.78	8,853.28	383.58	4.5%
Industrial									
3	200	583.50	1,032.20	1,615.70	648.00	1,054.78	1,702.78	87.08	5.4%
3	300	867.50	1,543.20	2,410.70	963.00	1,576.78	2,539.78	129.08	5.4%
4	2500	7,119.50	12,785.20	19,904.70	7,897.50	13,060.78	20,958.28	1,053.58	5.3%
6	5000	14,228.00	25,560.20	39,788.20	15,783.00	26,110.78	41,893.78	2,105.58	5.3%

ORDINANCE NO. 8847

AN ORDINANCE OF THE CITY OF LAWRENCE, KANSAS AMENDING SECTIONS 19-902 AND 19-903 OF THE CODE OF THE CITY OF LAWRENCE, KANSAS, 2011 EDITION AND AMENDMENTS THERETO, CONCERNING SYSTEM DEVELOPMENT CHARGES FOR WATER UTILITY AND WASTEWATER UTILITY CONNECTIONS.

BE IT ORDAINED BY THE GOVERNING BODY OF THE CITY OF LAWRENCE, KANSAS:

Section 1. Chapter 19, Article 9, Section 19-902 of the Code of the City of Lawrence, Kansas, 2011 Edition and amendments thereto is hereby amended as follows:

19-902 WATER SYSTEM DEVELOPMENT CHARGE; METER TYPE, SIZE AND CHARGE.

As required in Section 19-901, the water system development charge shall be as follows effective on and after the dates shown for each calendar year.

Size of Water Meter (in inches)	2013 effective May 1, 2013	2014 effective January 1, 2014	2015 effective January 1, 2015	2016 effective January 1, 2016	2017 effective January 1, 2017
RESIDENTIAL					
5/8	1,590	1,580	1,580	1,570	1,560
1	3,980	3,960	3,940	3,920	3,900
1½	7,950	7,910	7,880	7,840	7,800
2	12,720	12,660	12,600	12,540	12,480
ALL OTHER					
5/8	1,590	1,580	1,580	1,570	1,560
1	3,980	3,960	3,940	3,920	3,900
1½	7,950	7,910	7,880	7,840	7,800
2	12,720	12,660	12,600	12,540	12,480
3	23,850	23,740	23,630	23,510	23,400
4	39,750	39,560	39,380	39,190	39,000
6	79,500	79,130	78,750	78,380	78,000
8	159,000	158,250	157,500	156,750	156,000
10	238,500	237,380	236,250	235,130	234,000
12	349,800	348,150	346,500	344,850	343,200
16	874,500	870,380	866,250	862,130	858,000

SECTION 2. Chapter 19, Article 9, Section 19-903 of the Code of the City of Lawrence, Kansas, 2011 Edition and amendments thereto is hereby amended as follows:

19-903 WASTEWATER SYSTEM DEVELOPMENT CHARGE; METER TYPE, SIZE AND CHARGE.

As required in Section 19-901, the wastewater system development charge shall be effective on and after the dates shown for each calendar year.

Size of Water Meter (in inches)	2013 effective May 1, 2013	2014 effective January 1, 2014	2015 effective January 1, 2015	2016 effective January 1, 2016	2017 effective January 1, 2017
RESIDENTIAL					
All Meters	1,680	1,860	2,050	2,230	2,410
ALL OTHER					
5/8	3,510	3,890	4,280	4,660	5,040
1	8,780	9,740	10,690	11,650	12,600
1½	17,550	19,460	21,380	23,290	25,200
2	28,080	31,140	34,200	37,260	40,320
3	52,650	58,390	64,130	69,860	75,600
4	87,750	97,310	106,880	116,440	126,000
6	175,500	194,630	213,750	232,880	252,000
8	351,000	389,250	427,500	465,750	504,000
10	526,500	583,880	641,250	698,630	756,000
12	772,200	856,350	940,500	1,024,650	1,108,800
16	1,930,500	2,140,880	2,351,250	2,561,630	2,772,000

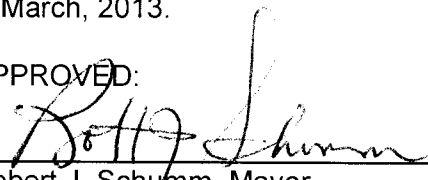
SECTION 3. Severability. If any section, clause, sentence, or phrase of this ordinance is found to be unconstitutional or is otherwise held invalid by any court of competent jurisdiction, it shall not affect the validity of any remaining parts of this ordinance.

SECTION 4. This ordinance shall take effect on and after May 1, 2013 and its publication as provided by law.

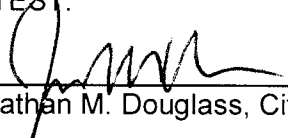
SECTION 5. Chapter 19, Article 9, Sections 19-902 and 19-903 of the Code of the City of Lawrence, Kansas, 2011 Edition and amendments thereto are hereby repealed, it being the intent of this ordinance to supersede the repealed provisions.

Passed by the governing body this 26th day of March, 2013.

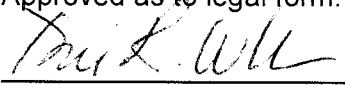
APPROVED:


Robert J. Schumm, Mayor

ATTEST:


Jonathan M. Douglass, City Clerk

Approved as to legal form:


Toni Wheeler, City Attorney