

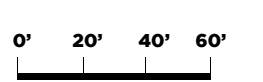
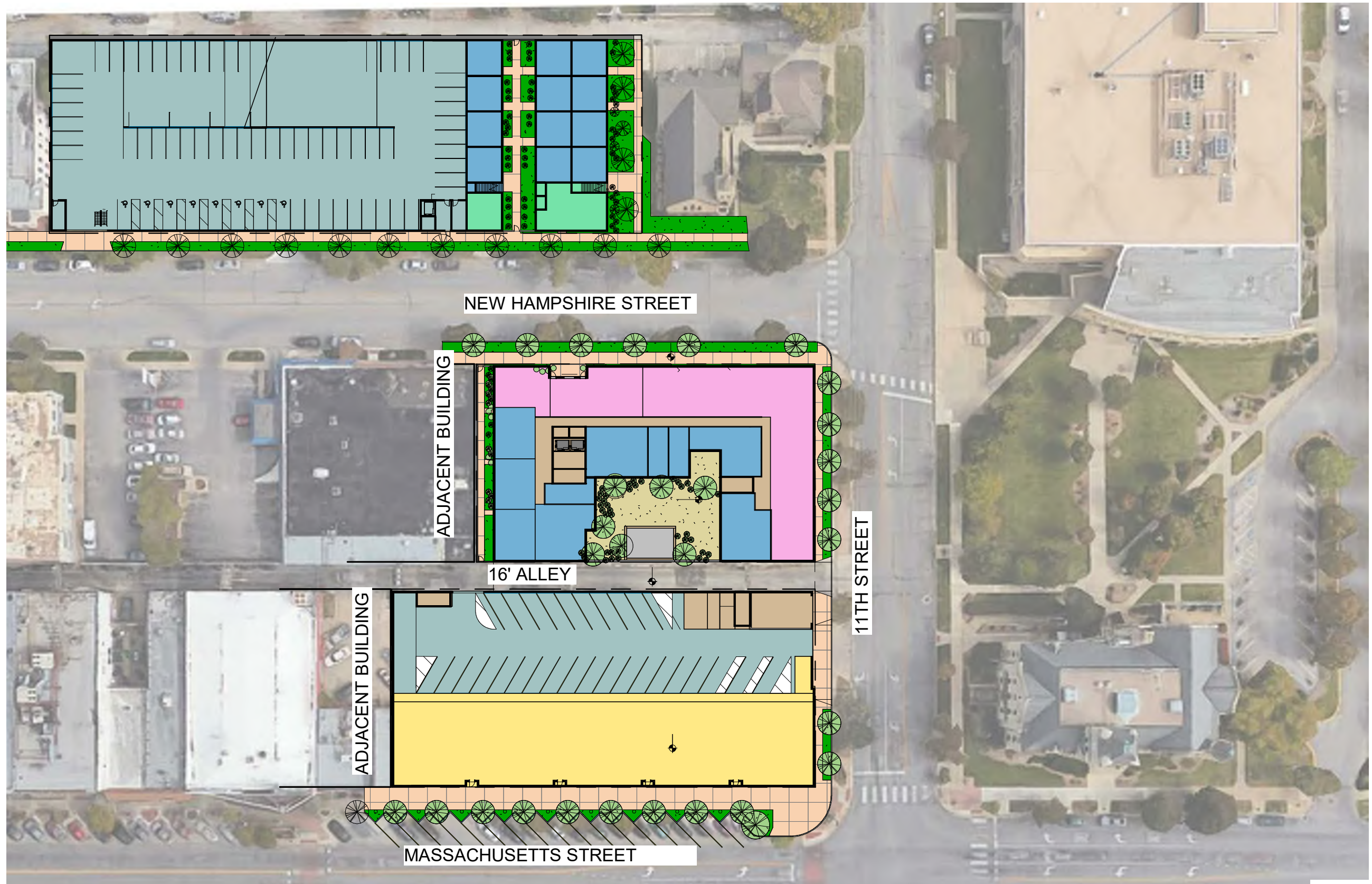


THE HUB AT LAWRENCE

Core Spaces Developer · Antunovich Associates Architecture, Planning, Interior Design[®]

CONCEPTUAL RENDERING

Lawrence, Kansas | February 15, 2019



THE HUB AT LAWRENCE

Core Spaces Developer · Antunovich Associates Architecture, Planning, Interior Design °

OVERALL SITE PLAN

Lawrence, Kansas | February 15, 2019



THE HUB AT LAWRENCE

1ST FLOOR/SITE PLAN



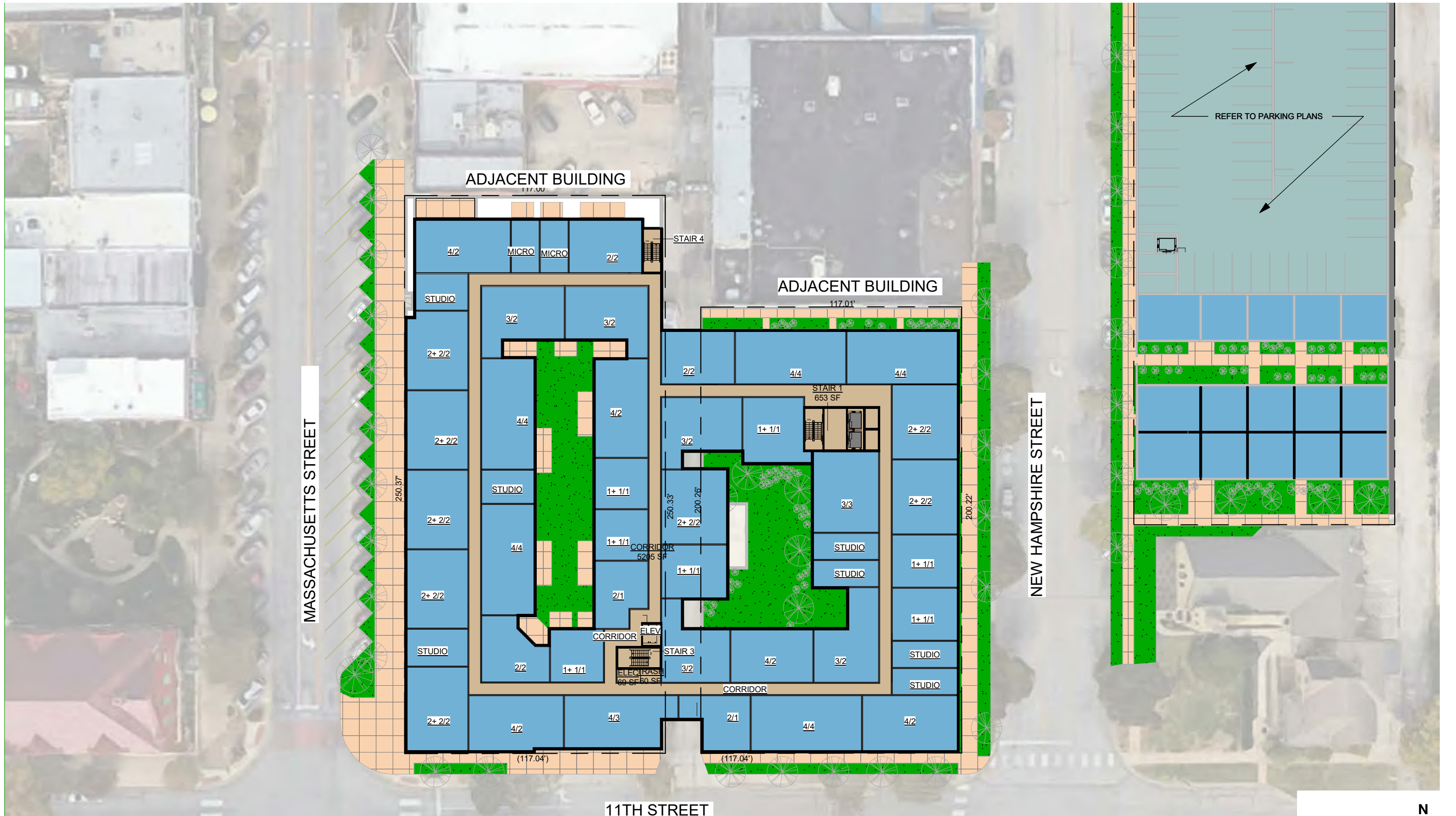
THE HUB AT LAWRENCE

MEZZ FLOOR PLAN



THE HUB AT LAWRENCE

2ND FLOOR PLAN



THE HUB AT LAWRENCE

3RD FLOOR PLAN



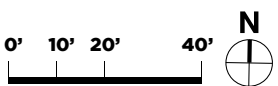
THE HUB AT LAWRENCE

4TH FLOOR PLAN



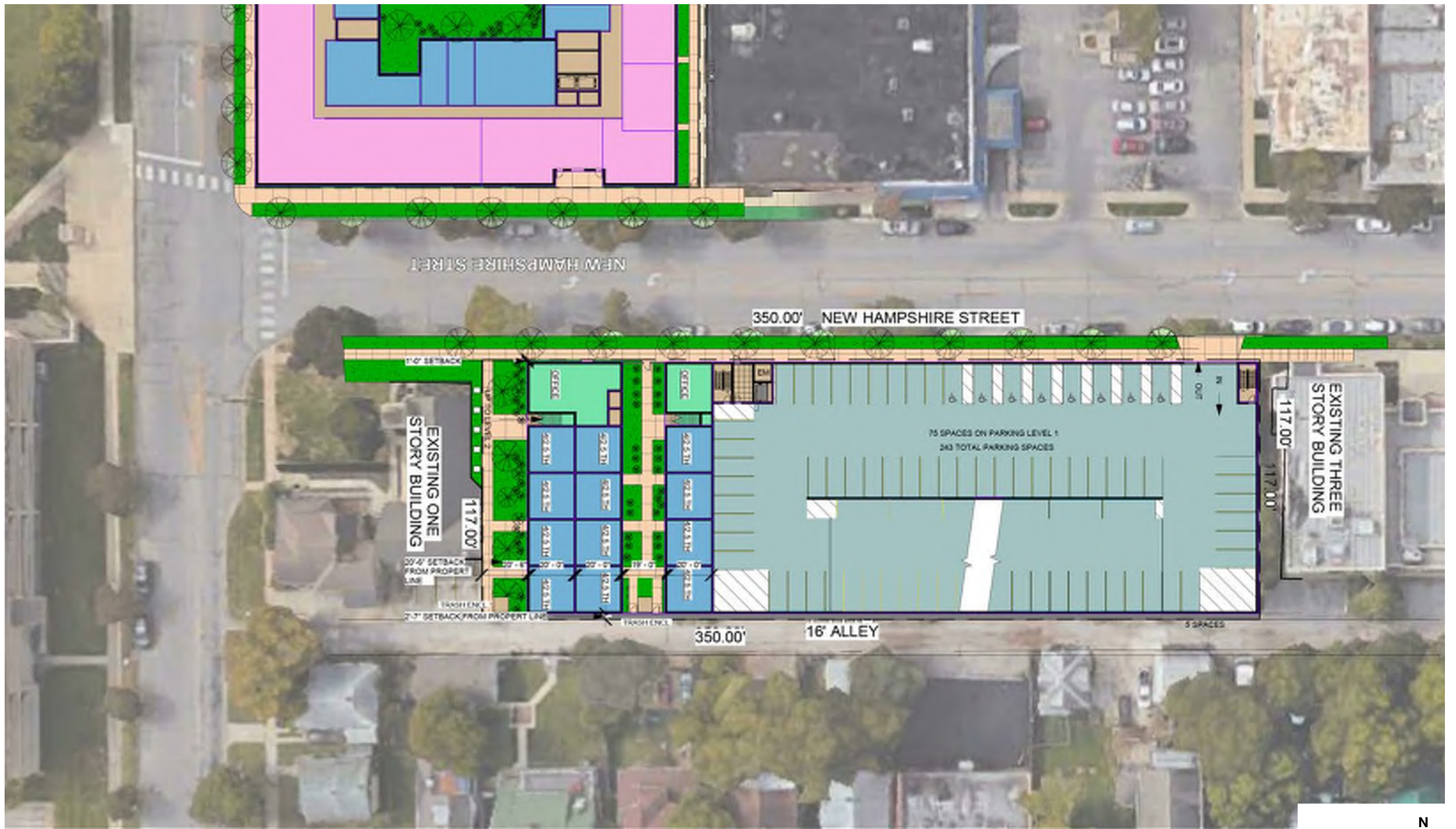
THE HUB AT LAWRENCE

5TH FLOOR PLAN



THE HUB AT LAWRENCE

POOL TERRACE PLAN



THE HUB AT LAWRENCE

PARKING STRUCTURE - LEVEL 1

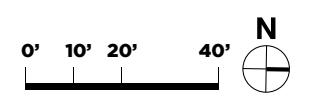


THE HUB AT LAWRENCE

Core Spaces Developer · Antunovich Associates Architecture, Planning, Interior Design °

PARKING STRUCTURE - LEVEL 2

Lawrence, Kansas | February 15, 2019



THE HUB AT LAWRENCE

Core Spaces Developer · Antunovich Associates Architecture, Planning, Interior Design ©

PARKING STRUCTURE - LEVEL 3

Lawrence, Kansas | February 15, 2019

UNIT MATRIX

The Hub at Lawrence, Kansas // Mixed-Use Development FEBRUARY 4, 2019

LEVEL	UNIT COUNT																				BED COUNT													BATHROOM	LEVEL							
	4/4.5TH	4/4TH	4/3TH	4/2.5TH	3/3TH	2/2TH	4 BEDS / 4 BATHS	4 BEDS / 3 BATHS	4BED / 2BATH	3BED / 3BATH	3BED / 2BATH	2+2 / 2	2+1 / 2	2BED / 2BATH	2BED / 1BATH	1+1 / 1	1 BED	STUDIO	MICRO	TOTAL UNITS	4/4.5 TH	4/4 TH	4/3TH	4/2.5TH	3/3TH	2/2TH	4BED / 4BATH	4BED / 3BATH	4BED / 2BATH	3BED / 3BATH	3BED / 2BATH	2+2 / 2	2+1 / 2			2BED / 2BATH	2 BED / 1BATH	1+1 / 1	1 BED	STUDIO	MICRO	TOTAL BEDS
5	0	0	0	0	0	0	3	0	5	1	4	9	0	2	0	7	1	4	1	37	0	0	0	0	0	0	12	0	20	3	12	36	0	4	0	14	1	4	1	107		5
4	0	0	0	0	0	0	5	1	5	1	5	8	0	3	2	7	0	6	3	46	0	0	0	0	0	0	20	4	20	3	15	32	0	6	4	14	0	6	3	127		4
3	0	0	0	0	0	0	5	1	5	1	5	8	0	3	2	7	0	7	2	46	0	0	0	0	0	0	20	4	20	3	15	32	0	6	4	14	0	7	2	127		3
2/P3	0	0	0	0	0	0	5	0	5	1	3	7	0	3	0	3	1	9	2	39	0	0	0	0	0	20	0	20	3	9	28	0	6	0	6	1	9	2	104		2/P3	
MEZ/P2	0	4	0	0	2	3	1	0	3	1	2	1	0	1	0	2	0	5	0	25	0	16	0	0	6	4	0	12	3	6	4	0	2	0	4	0	5	0	68		MEZ/P2	
1/P1	0	3	0	13	0	0	1	0	1	1	1	0	0	0	0	0	0	3	0	23	0	12	0	52	0	4	0	4	3	3	0	0	0	0	0	3	0	81		1		
	0	7	0	13	2	3	20	2	24	6	20	33	0	12	4	26	2	34	8	216	0	28	0	52	6	6	80	104	96	18	60	132	0	24	8	52	2	34	8	614		
%	0%	3%	0%	6%	1%	1%	9%	1%	11%	3%	9%	16%	0%	6%	2%	12%	1%	16%	4%	100%	0%	5%	0%	8%	1%	1%	13%	17%	16%	3%	10%	21%	0%	4%	2%	8%	0%	6%	1%	100%		
CORE MIX DIFFERENCE	0	7	0	13	2	3	15	3	28	6	20	14	0	12	24	17	9	25	47	160	132	160	160	108	154	154	80	160	56	92	24	60	132	0	10	14	22	52	24	10	5	609

UNIT TYPE AND BATHROOM RATIO																				
	4/4.5 TH	4/4 TH	4/3 TH	4/2.5 TH	3/3 TH	2/2 TH	4 BEDS / 4 BATHS	4 BEDS / 3 BATHS	4BED / 2BATH	3BED / 3BATH	3BED / 2BATH	2+1 / 2	2+1 / 2	2BED / 2BATH	2BED / 1BATH	1+1 / 1	1 BED	STUDIO	MICRO	TOTAL BATHROOMS
Bath Per Unit	4.5	4	3	2.5	3	2	4	3	2	3	2	2	2	2	1	1	1	1	1	
Unit Type Count	0	7	0	13	2	3	20	2	24	6	20	33	0	12	4	26	2	34	8	
	0.0	28.0	0.0	32.5	6.0	6.0	80.0	6.0	48.0	18.0	40.0	66.0	0.0	24.0	4.0	26.0	2.0	34.0	8.0	429

* NORTH EAST TOWNHOUSES AT EAST PARCEL INCLUDED IN CALCULATIONS

Bath-to-Bed Ratio 69.8%
Bed-to-Bath Ratio 1.43

UNIT TYPE BY ZONING ORDINANCE	
TYPE	COUNT
TYPE A - 825 SF+	75
TYPE B - 650-824 SF	16
TYPE C - 470-649SF	26
TYPE D - under 470sf	-
Efficiencies under	42

LEVEL	BEDROOM COUNT																			
	4/4.5 TH	4/4TH	4/3 TH	4/2.5 TH	3/3 TH	2/2 TH	4 BEDS / 4 BATHS	4 BEDS / 3 BATHS	4BED / 2BATH	3BED / 3BATH	3BED / 2BATH	2+1 / 2	2+1 / 2	2BED / 2BATH	2BED / 1BATH	1+1 / 1	1 BED	STUDIO	MICRO	TOTAL UNITS
5	0	0	0	0	0	0	12	0	20	3	12	18	0	4	0	7	1	4	1	82
4	0	0	0	0	0	0	20	4	20	3	15	16	0	6	4	7	0	6	3	104
3	0	0	0	0	0	0	20	4	20	3	15	16	0	6	4	7	0	7	2	104
2/P3	0	0	0	0	0	0	20	0	20	3	9	14	0	6	0	3	1	9	2	87
MEZ/P2	0	16	0	0	6	6	4	0	0	0	0	0	0	0	0	0	0	5	0	37
1/P1	0	12	0	52	0	0	4	0	0	0	0	0	0	0	0	0	0	3	0	71
	0	28	0	52	6	6	80	8	80	12	61	64	0	22	8	24	2	34	8	485

PROJECT AREA ANALYSIS 4 - 6 STORY | 49 - 76 FT.

LEVEL	FLOOR HEIGHT	OVERALL HEIGHT	COMMERCIAL - OFFICE								RETAIL / B.O.H.		PARKING/LOADING		Total GSF W/O BALCONIES	Total GSF	FAR area	
			COMMON	AMENITIES	RSF	Public Terrace	Private Terrace / Balcony	OFFICE	BEDS	UNITS	RETAIL /	COMMON/LOADING	AREA	SPACES				
POOL TERRACE/ MECH. PENTHOUSE	15'	80'	1,408		-	5,448							2,500			3,908	9,356	3,908
5	11'	65'	6,204		32,659	6,430	700		107	37						38,863	45,993	38,863
4	11'	54'	6,468		38,850		700		127	46						45,318	46,018	45,318
3	11'	43'	6,448		39,153	-	700		127	46						45,601	46,301	45,601
2	11'	32'	6,453		35,849	4,451	1,200		104	39						42,302	47,953	42,302
MEZ		21'	2,621		20,025				61	22						22,646	22,646	22,646
1	21'	21'	4,897	7,759	8,225	3,296	500		33	11	14,083		-	12,898	29	47,862	51,658	34,964
BUILDING TOTALS	80		34,499	7,759	174,761	19,625	3,800		559	201	14,083		2,500	12,898	29	246,500	269,925	233,602

PARKING - AT EAST PARCEL

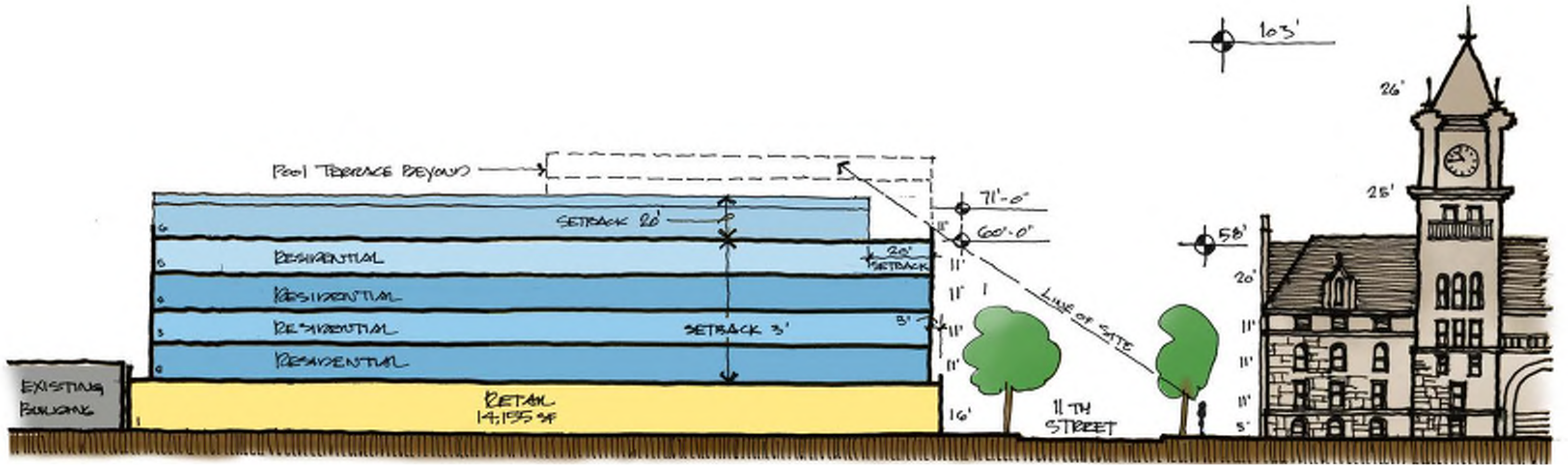
LEVEL	FLOOR HEIGHT	OVERALL HEIGHT	COMMERCIAL - OFFICE								RETAIL / B.O.H.		PARKING/LOADING		Total GSF W/O BALCONIES	Total GSF	FAR area	
			COMMON	AMENITIES	RSF	Public Terrace	Private Terrace / Balcony	OFFICE	BEDS	UNITS	RETAIL /	COMMON/LOADING	AREA	SPACES				
3	10'-0"		691											23,827	79	24,518	24,518	691
2	10'-0"		687											26,712	89	27,399	27,399	687
1	10'-0"	0'-0"	661										-	26,173	75	26,834	26,834	661
BUILDING TOTALS			2,039	-	-	-	-	-	-	-	-	-	-	76,712	243	78,751	78,751	2,039

NORTH EAST TOWNHOUSES - AT EAST PARCEL

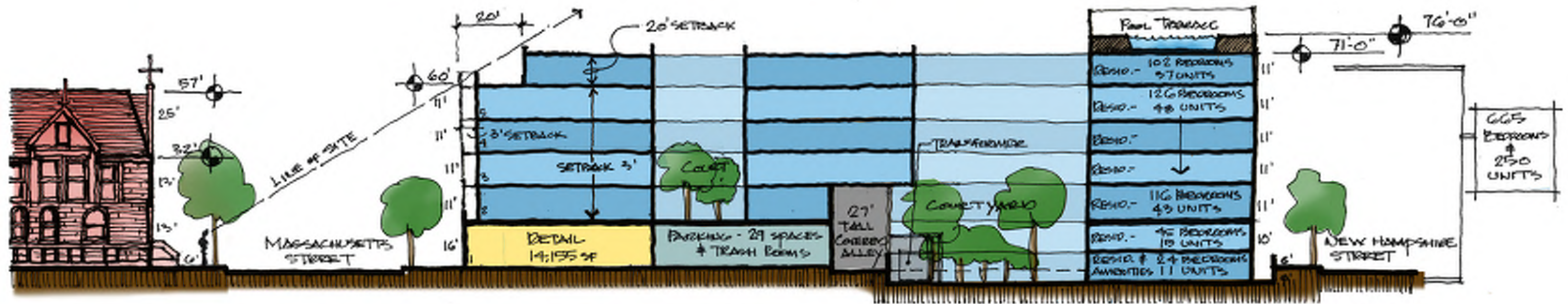
LEVEL	FLOOR HEIGHT	OVERALL HEIGHT	COMMERCIAL - OFFICE								RETAIL / B.O.H.		PARKING/LOADING		Total GSF W/O BALCONIES	Total GSF	FAR area	
			COMMON	AMENITIES	RSF	Public Terrace	Private Terrace / Balcony	OFFICE	BEDS	UNITS	RETAIL /	COMMON/LOADING	AREA	SPACES				
3	10'-0"				7,321											7,321	7,321	7,321
2	10'-0"				7,074				7	3						7,074	7,074	7,074
1	10'-0"	0'-0"	70		5,461			1,756	48	12						7,287	7,287	5,531
BUILDING TOTALS			70	-	19,856	-	-	1,756	55	15	-	-	-	-	-	21,682	21,682	19,926

TOTALS

LEVEL	FLOOR HEIGHT	OVERALL HEIGHT	COMMERCIAL - OFFICE								RETAIL / B.O.H.		PARKING/LOADING		Total GSF W/O BALCONIES	Total GSF	FAR area
			COMMON	AMENITIES	RSF	Public Terrace	Private Terrace / Balcony	OFFICE	BEDS	UNITS	RETAIL /	COMMON/LOADING	AREA	SPACES			
PROJECT TOTALS			36608	7759	194617	19625	3800	1756	614	216	14083	2500	89610	272	346,933	370,358	255,567

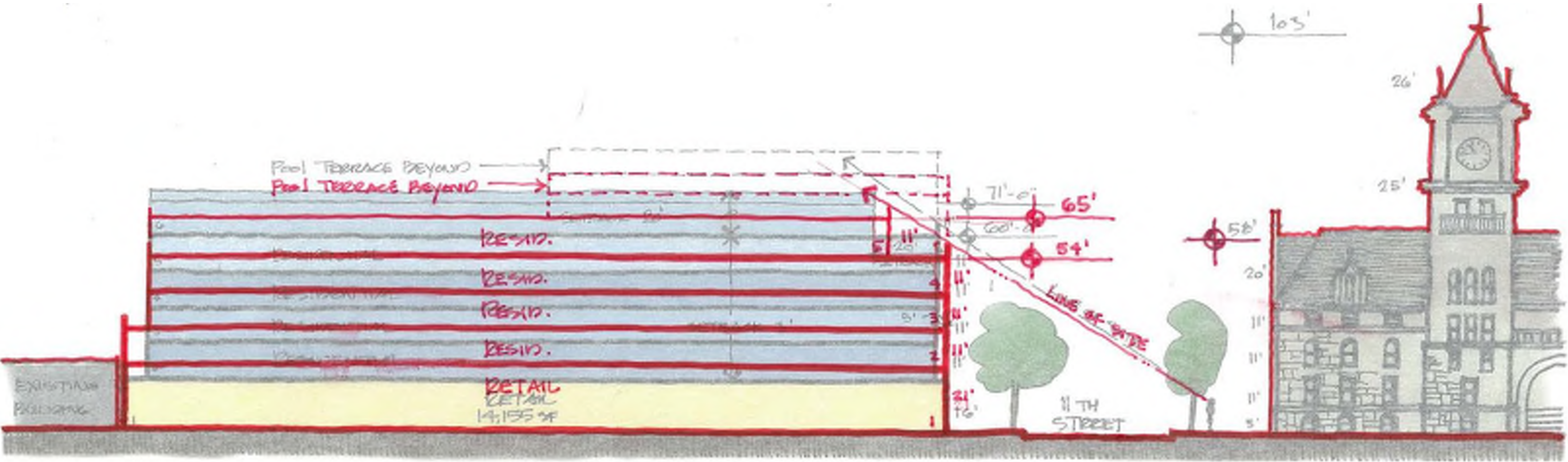


NORTH-SOUTH SECTION

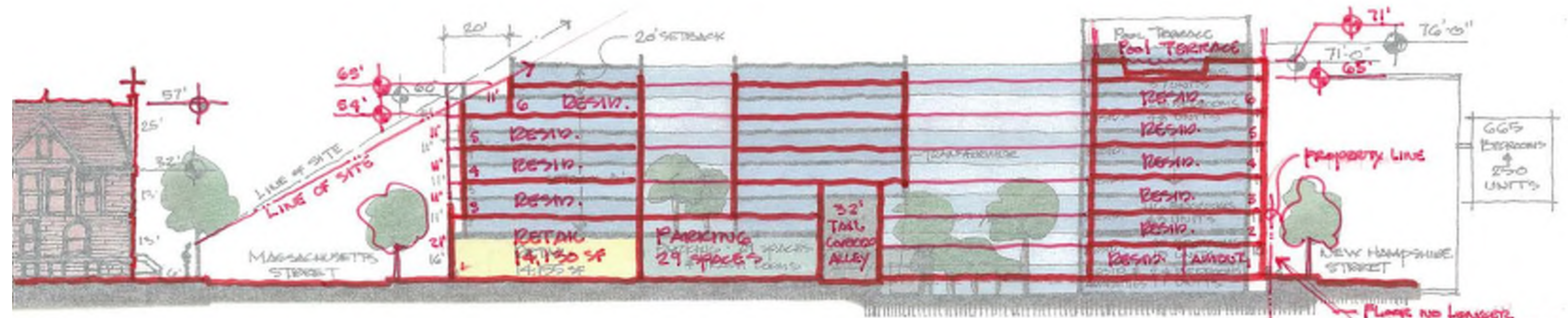


EAST-WEST SECTION

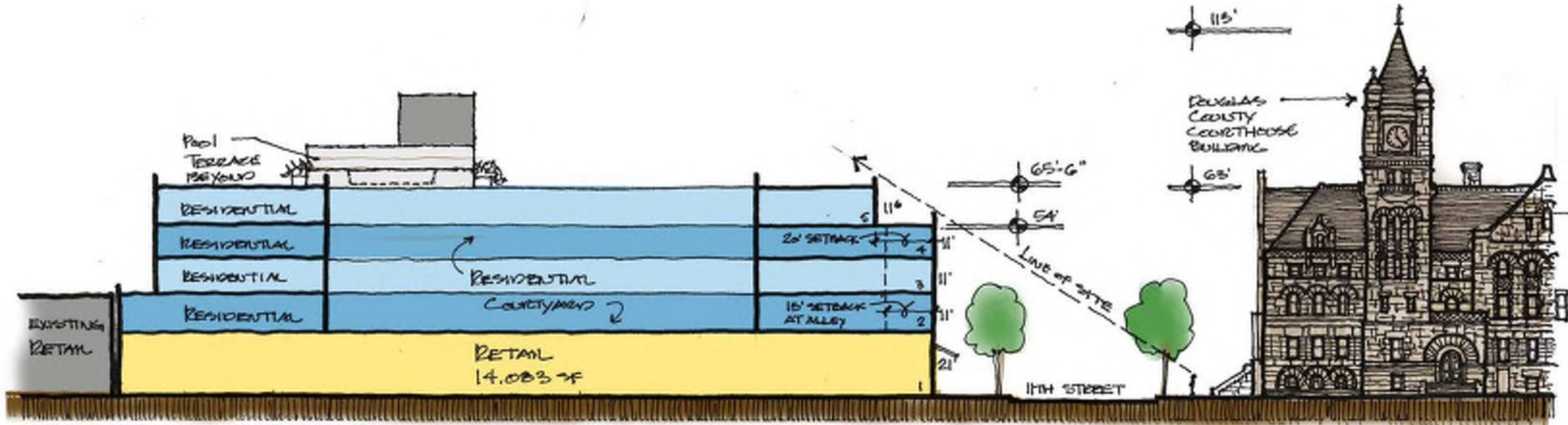




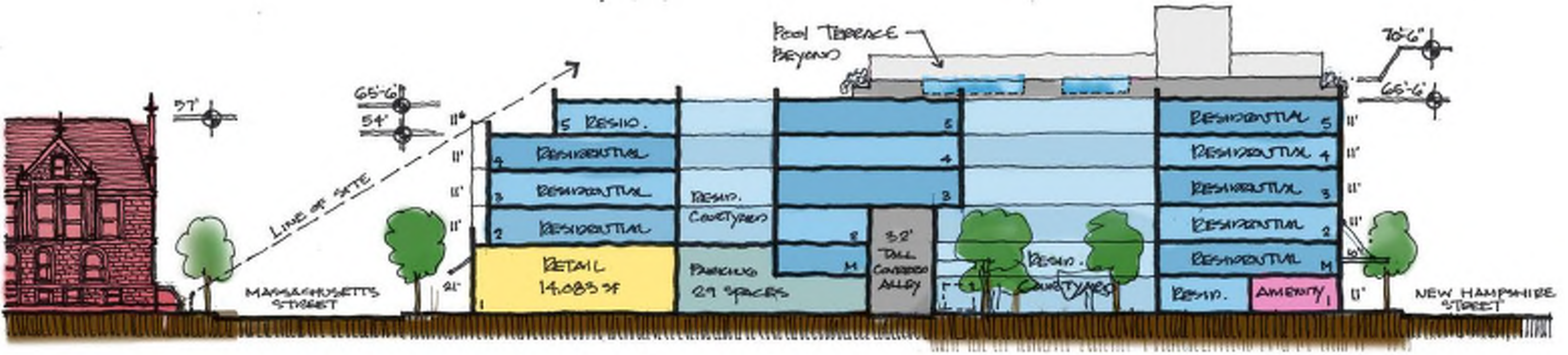
NORTH-SOUTH SECTION 0' 7.5' 15' 30'



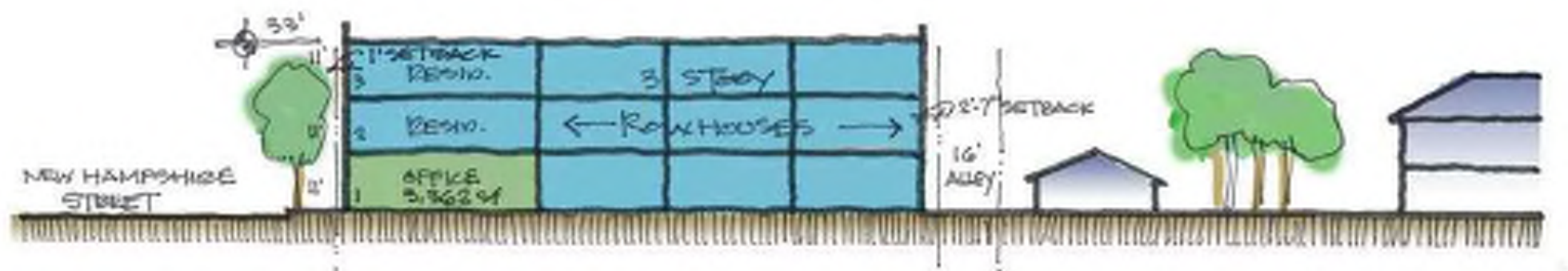
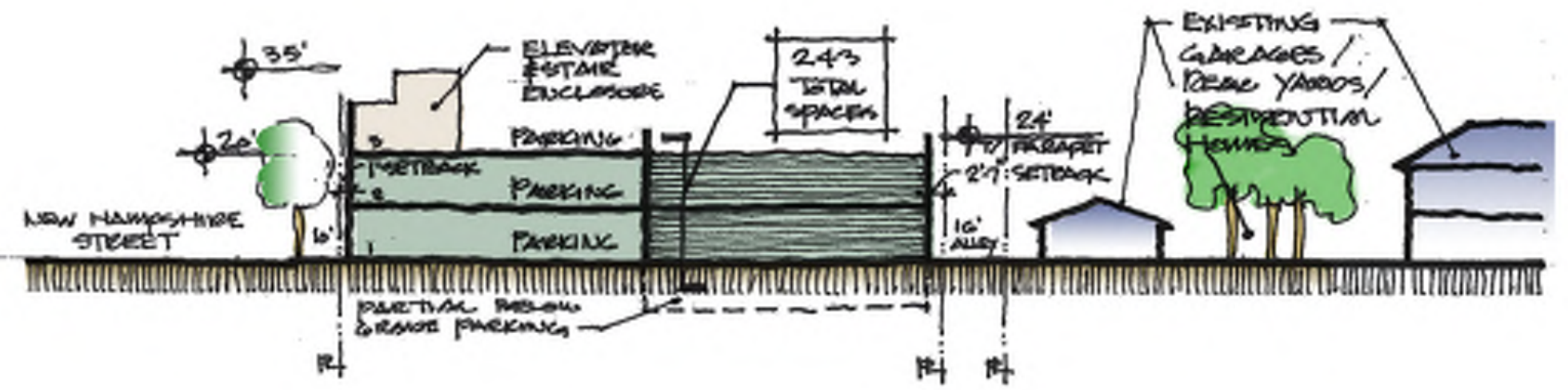
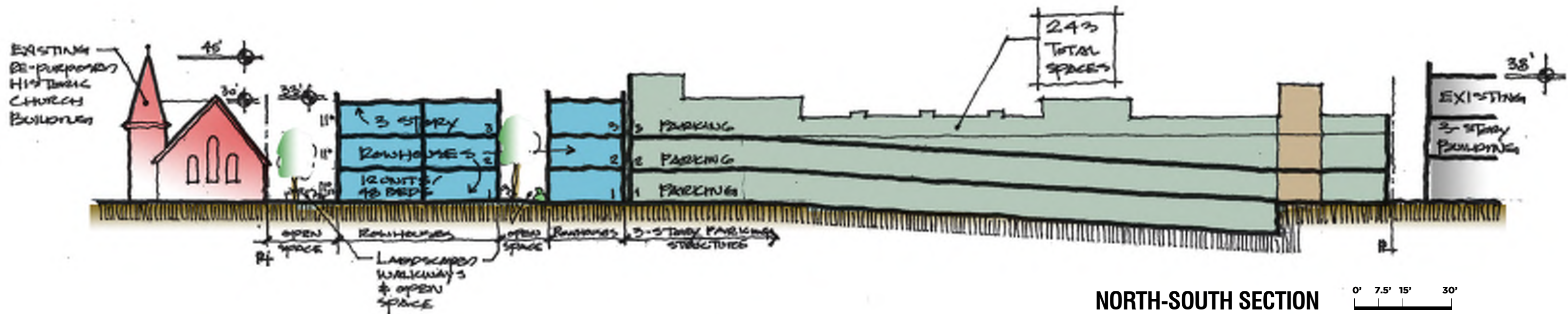
EAST-WEST SECTION 0' 7.5' 15' 30'



NORTH-SOUTH SECTION 0' 7.5' 15' 30'



EAST-WEST SECTION 0' 7.5' 15' 30'







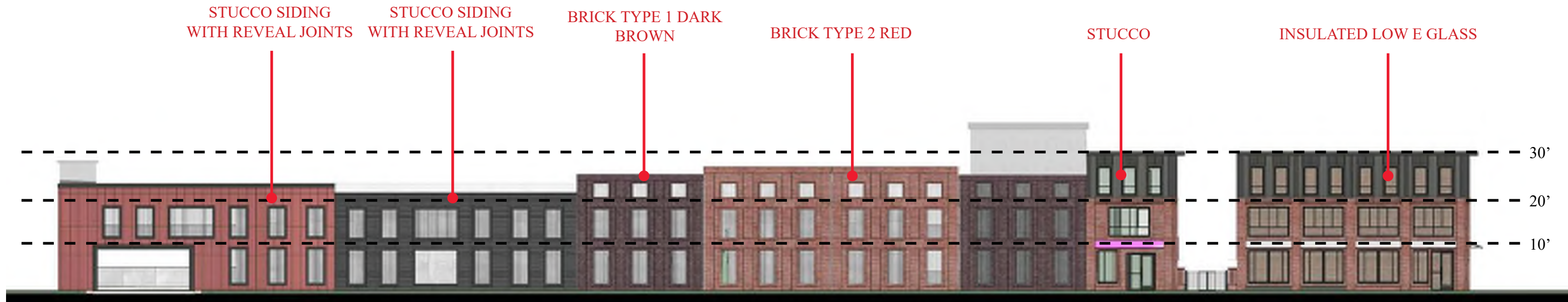


THE HUB AT LAWRENCE

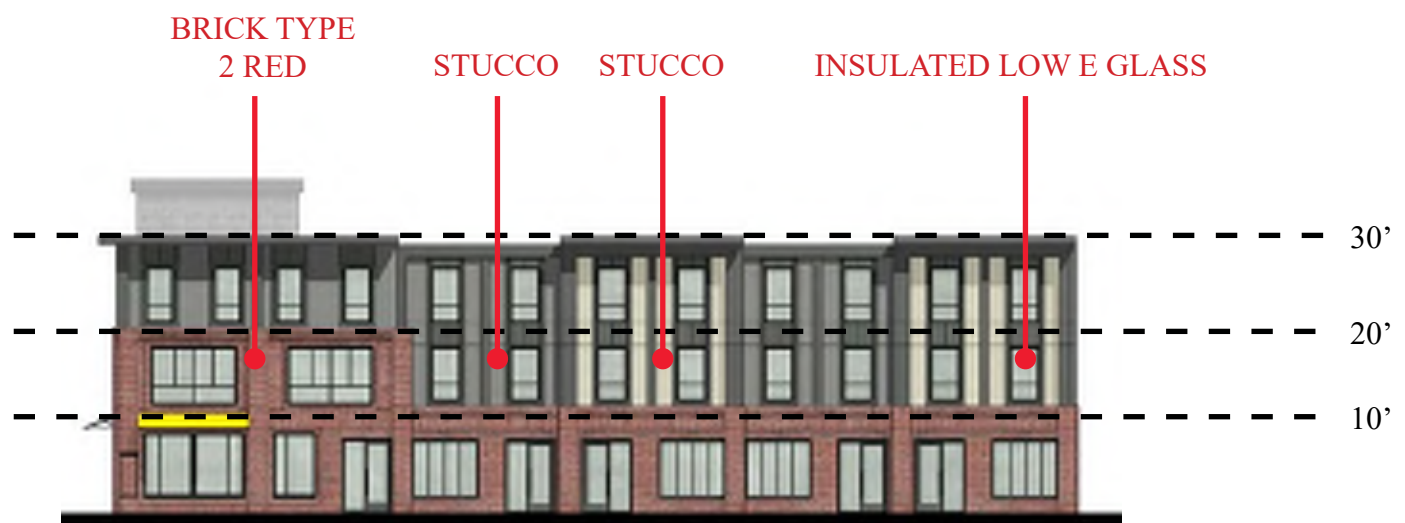


THE HUB AT LAWRENCE

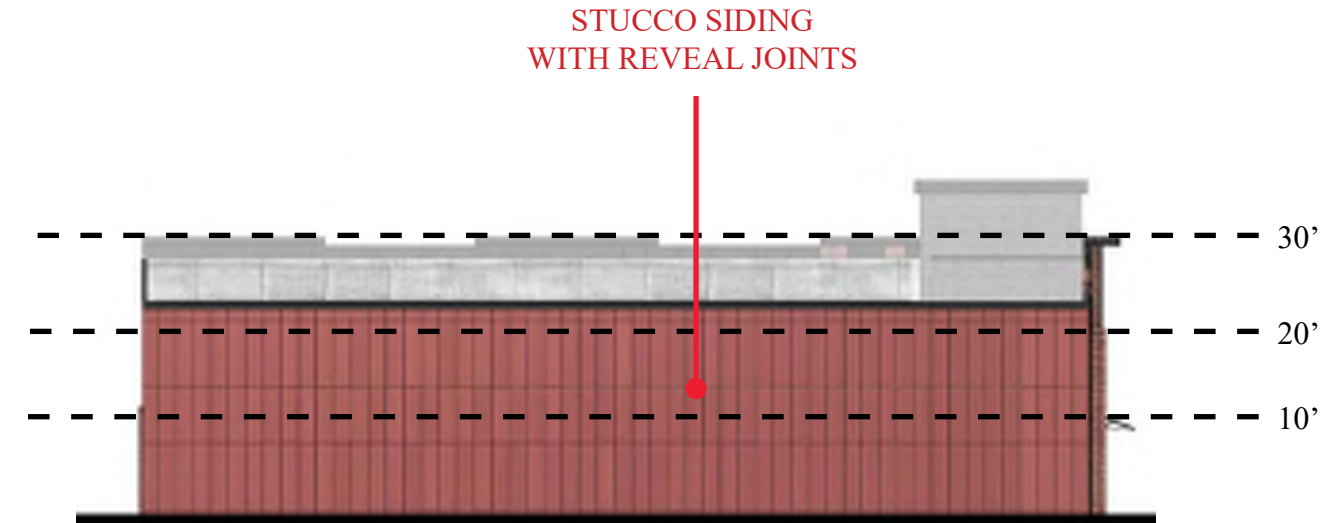
PROPOSED SOUTH ELEVATION



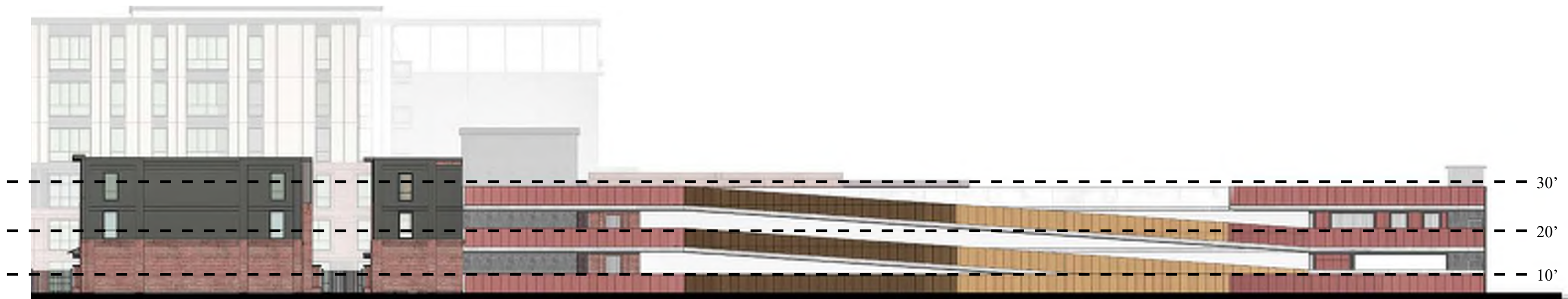
WEST ELEVATION



SOUTH ELEVATION



NORTH ELEVATION



THE HUB AT LAWRENCE



THE HUB AT LAWRENCE

Core Spaces Developer · Antunovich Associates Architecture, Planning, Interior Design °

CONTEXT RENDERINGS

Lawrence, Kansas | February 15, 2019



THE HUB AT LAWRENCE

Core Spaces Developer · Antunovich Associates Architecture, Planning, Interior Design[®]

CONTEXT RENDERINGS

Lawrence, Kansas | February 15, 2019



THE HUB AT LAWRENCE

Core Spaces Developer · Antunovich Associates Architecture, Planning, Interior Design °

CONTEXT RENDERINGS

Lawrence, Kansas | February 15, 2019



THE HUB AT LAWRENCE

Core Spaces Developer • Antunovich Associates Architecture, Planning, Interior Design °

CONTEXT RENDERINGS

Lawrence, Kansas | February 15, 2019

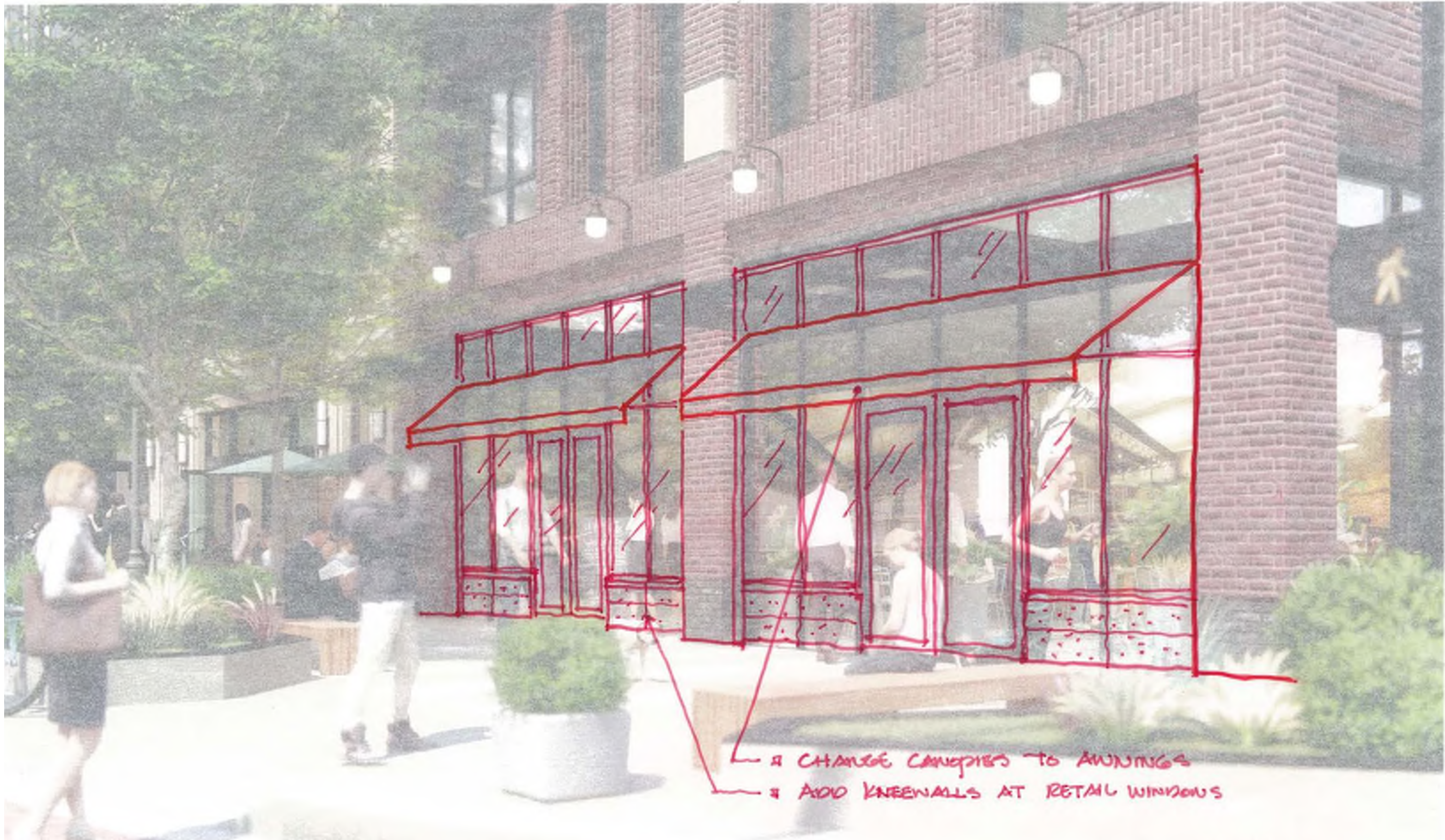


THE HUB AT LAWRENCE

Core Spaces Developer • Antunovich Associates Architecture, Planning, Interior Design[®]

PREVIOUS RENDERING

Lawrence, Kansas | February 15, 2019



THE HUB AT LAWRENCE

Core Spaces Developer • Antunovich Associates Architecture, Planning, Interior Design®

CITY COMMENTS

Lawrence, Kansas | February 15, 2019



THE HUB AT LAWRENCE

Core Spaces Developer • Antunovich Associates Architecture, Planning, Interior Design °

PROPOSED CONCEPTUAL RENDERING

Lawrence, Kansas | February 15, 2019



THE HUB AT LAWRENCE

Core Spaces Developer • Antunovich Associates Architecture, Planning, Interior Design®

PROPOSED CONCEPTUAL RENDERING

Lawrence, Kansas | February 15, 2019



THE HUB AT LAWRENCE

Core Spaces Developer · Antunovich Associates Architecture, Planning, Interior Design °

PROPOSED RENDERING

Lawrence, Kansas | February 15, 2019

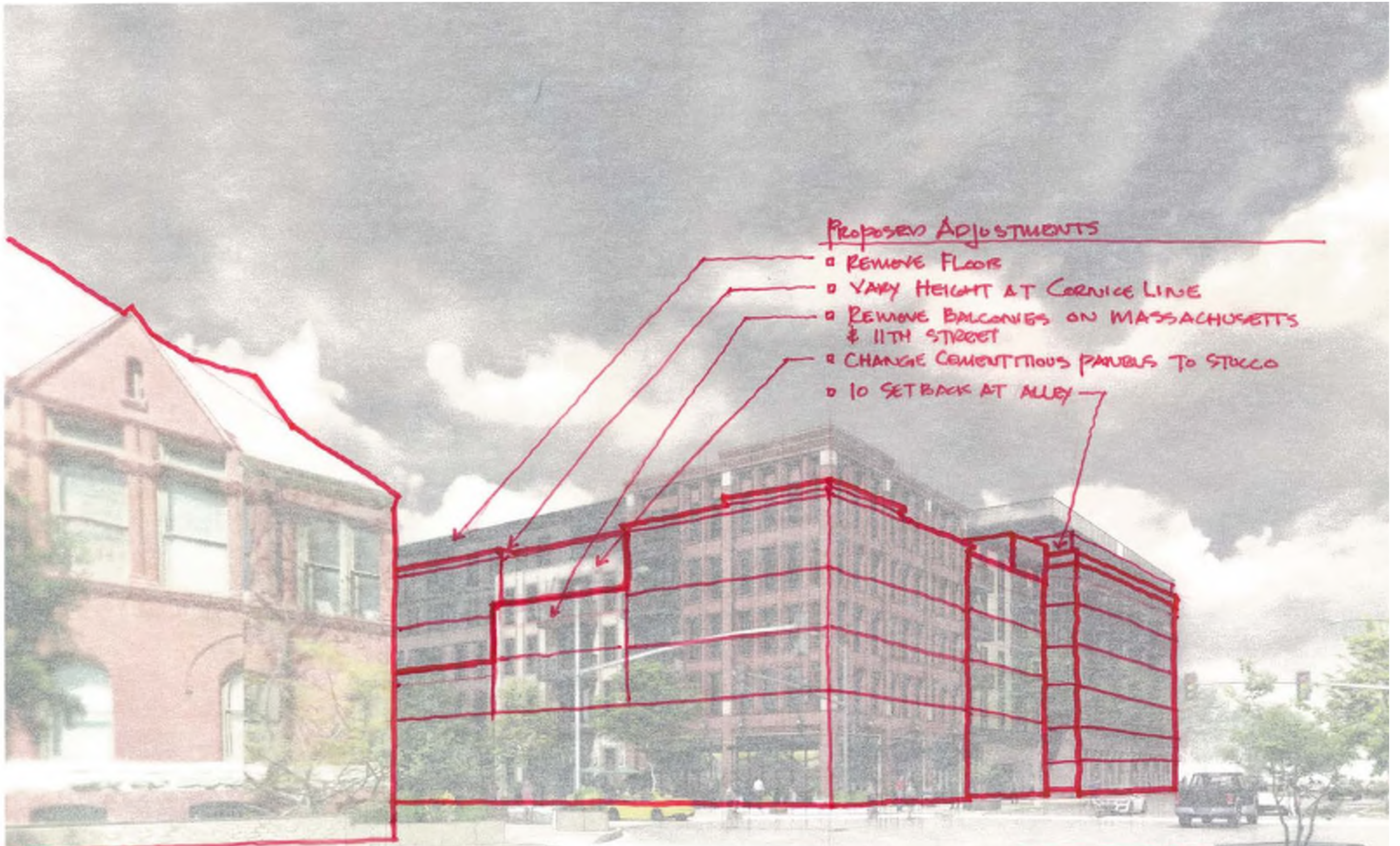


THE HUB AT LAWRENCE

Core Spaces Developer · Antunovich Associates Architecture, Planning, Interior Design[®]

PREVIOUS RENDERING

Lawrence, Kansas | February 15, 2019



PROPOSED ADJUSTMENTS

- REMOVE FLOOR
- VARY HEIGHT AT CORNICE LINE
- REMOVE BALCONIES ON MASSACHUSETTS & 11TH STREET
- CHANGE CEMENTITIOUS PANELS TO STUCCO
- 10 SETBACK AT ALLEY



THE HUB AT LAWRENCE

Core Spaces Developer · Antunovich Associates Architecture, Planning, Interior Design[®]

PROPOSED CONCEPTUAL RENDERING

Lawrence, Kansas | February 15, 2019



THE HUB AT LAWRENCE

PROPOSED CONCEPTUAL RENDERING

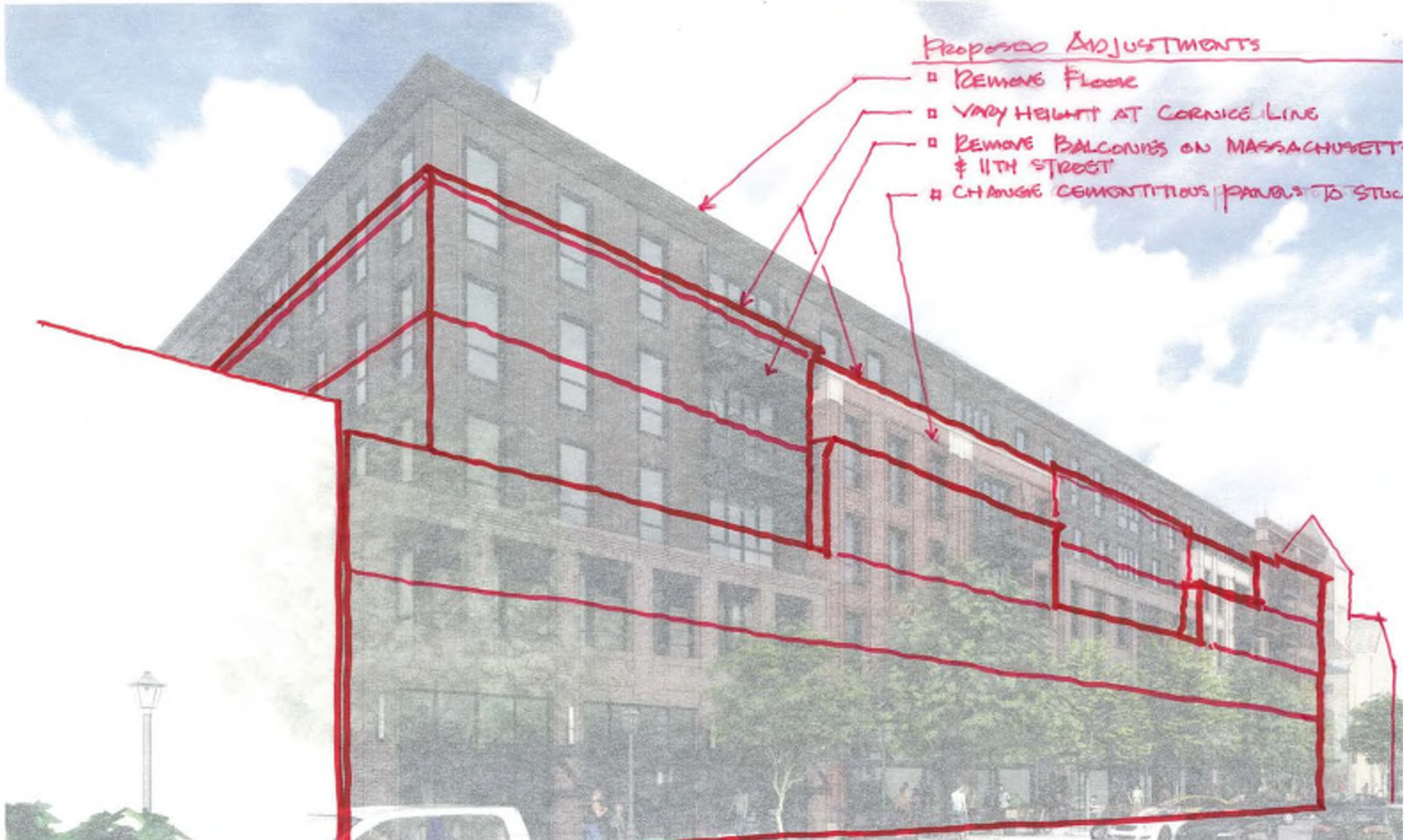


THE HUB AT LAWRENCE

Core Spaces Developer • Antunovich Associates Architecture, Planning, Interior Design ©

PREVIOUS RENDERING

Lawrence, Kansas | February 15, 2019



Proposed Adjustments

- REMOVE FLOOR
- VARY HEIGHT AT CORNICE LINE
- REMOVE BALCONIES ON MASSACHUSETTS & 11TH STREET
- CHANGE CEMENTITIOUS PANELS TO STUCCO



THE HUB AT LAWRENCE

Core Spaces Developer • Antunovich Associates Architecture, Planning, Interior Design[®]

PROPOSED CONCEPTUAL RENDERING

Lawrence, Kansas | February 15, 2019



THE HUB AT LAWRENCE

Core Spaces Developer • Antunovich Associates Architecture, Planning, Interior Design ©

PROPOSED CONCEPTUAL RENDERING

Lawrence, Kansas | February 15, 2019

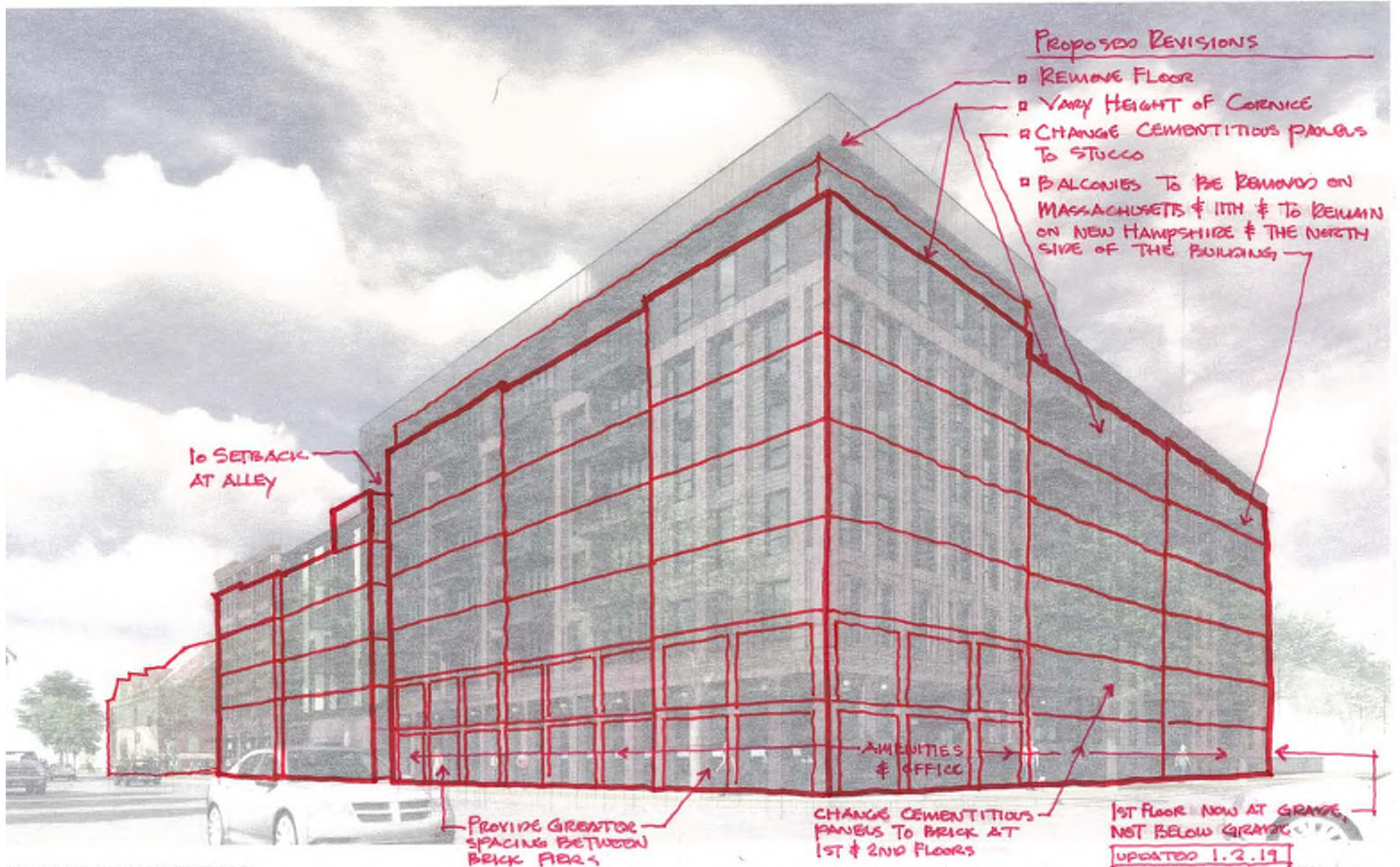


THE HUB AT LAWRENCE

Core Spaces Developer • Antunovich Associates Architecture, Planning, Interior Design ©

PREVIOUS RENDERING

Lawrence, Kansas | February 15, 2019



THE HUB AT LAWRENCE



THE HUB AT LAWRENCE

Core Spaces Developer • Antunovich Associates Architecture, Planning, Interior Design[®]

PROPOSED CONCEPTUAL RENDERING

Lawrence, Kansas | February 15, 2019



THE HUB AT LAWRENCE

Core Spaces Developer • Antunovich Associates Architecture, Planning, Interior Design[®]

PREVIOUS RENDERING

Lawrence, Kansas | February 15, 2019



THE HUB AT LAWRENCE

Core Spaces Developer • Antunovich Associates Architecture, Planning, Interior Design[®]

PROPOSED CONCEPTUAL RENDERING

Lawrence, Kansas | February 15, 2019



THE HUB AT LAWRENCE

Core Spaces Developer • Antunovich Associates Architecture, Planning, Interior Design ©

PREVIOUS RENDERING

Lawrence, Kansas | February 15, 2019



THE HUB AT LAWRENCE

Core Spaces Developer • Antunovich Associates Architecture, Planning, Interior Design ©

PROPOSED CONCEPTUAL RENDERING

Lawrence, Kansas | February 15, 2019



THE HUB AT LAWRENCE

Core Spaces Developer • Antunovich Associates Architecture, Planning, Interior Design ©

PREVIOUS RENDERING

Lawrence, Kansas | February 15, 2019



THE HUB AT LAWRENCE

Core Spaces Developer · Antunovich Associates Architecture, Planning, Interior Design[®]

PROPOSED PARKING GARAGE CONCEPTUAL RENDERING

Lawrence, Kansas | February 15, 2019