



Climate Protection Plan and Sustainability Update

Jasmin Moore

Sustainability Director



City of Lawrence
Douglas County

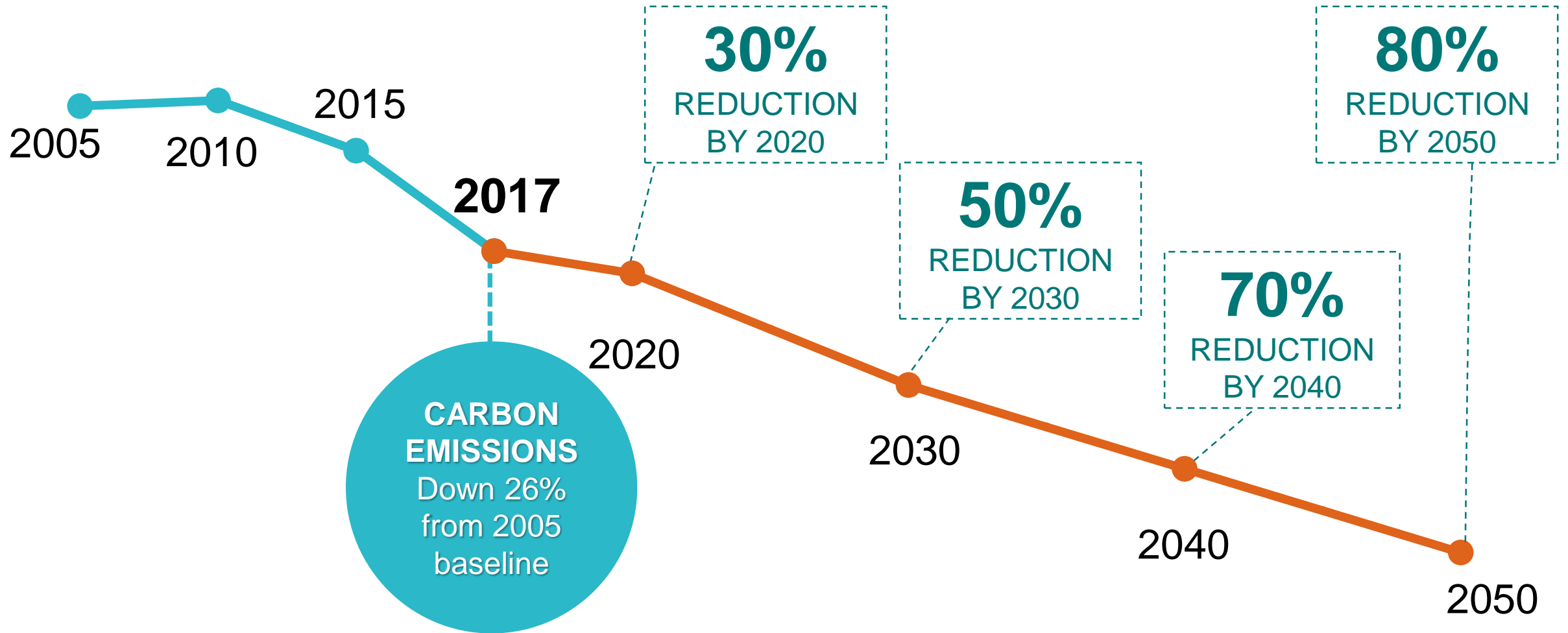


Climate Protection Plan 2009



Peak Oil Report 2011

GHG Reduction Goals for Lawrence





Global, national,
and local context



A Decade of Progress

ection



- Lawrence signed the Mayors Climate Protection Agreement

- Greenhouse Gas Inventory

- Climate Protection Plan

- Peak Oil Taskforce Report

- Environmental Chapter added to Horizon 2020

- STAR Community Rating

- Lawrence signed on to the Paris climate agreement, which aims to strengthen local, regional, and global approach to combating climate change
- Food System Plan

- Plan 2040
- GHG update

Climate Protection Plan Recommendations

Dedicated Staffing &
Funding

Establish Outreach and
Education Programs

Strengthen Energy Conservation
Policies & Building Standards

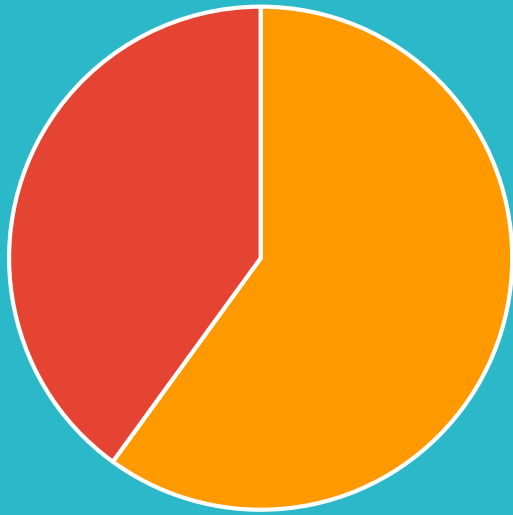
Water and Waste
Reduction

Incorporate reduction of GHG
in to Land Use Planning

Leadership in Municipal
Operations

Improve Transportation
Efficiency

Dedicated Staffing & Funding to Support Climate Protection and Sustainability Initiatives



Joint city and county Sustainability Office created in 2010



2 full-time professional Sustainability Office staff: Director & Food System and Sustainability Planner



Program budget funded from the County and City General Fund

CPP RECOMMENDATIONS	1	2	3	4	5	6	7
---------------------	---	---	---	---	---	---	---

Strengthen Energy Conservation Policies and Building Standards



Enhanced building codes to increase energy efficiency in new constructions and remodeling work



Created economic incentives to encourage construction of energy and water efficient certified buildings



Reduced building permit fees for installing solar PV or solar thermal projects in Lawrence

CPP RECOMMENDATIONS	1	2	3	4	5	6	7

Incorporate reduction of GHG in to Land Use Planning



Adoption of Chapter 16 in Horizon 2020



Complete Streets policy adopted and recently revised



Adopted Countywide Bikeway System Plan and T2040

CPP RECOMMENDATIONS	1	2	3	4	5	6	7

Improve Transportation Efficiency



Recently approved city-wide traffic signal coordination and timing study



Lawrence Transit & KU Wheels partnership



Dedicated funding for pedestrian and bicycle infrastructure

CPP RECOMMENDATIONS	1	2	3	4	5	6	7

Establish Outreach and Education Programs



Ongoing engagement and presentations with school and community groups



Take Charge Challenge against Manhattan



Mayor's Challenge for Water Conservation
MyWaterPledge.com

CPP RECOMMENDATIONS	1	2	3	4	5	6	7
---------------------	---	---	---	---	---	---	---

Water and Waste Reduction



Curbside single-stream recycling



EcoFlow Program



Yard Waste Composting

CPP RECOMMENDATIONS	1	2	3	4	5	6	7
---------------------	---	---	---	---	---	---	---

Leadership in Municipal Operations



Green Bonds



Energy Efficiency in
municipal facilities



Common Ground

CPP RECOMMENDATIONS	1	2	3	4	5	6	7
------------------------	---	---	---	---	---	---	---

Community
greenhouse gas
emissions

↓ 26%

Municipal
greenhouse gas
emissions

↓ 17%

Climate Protection Plan
2009



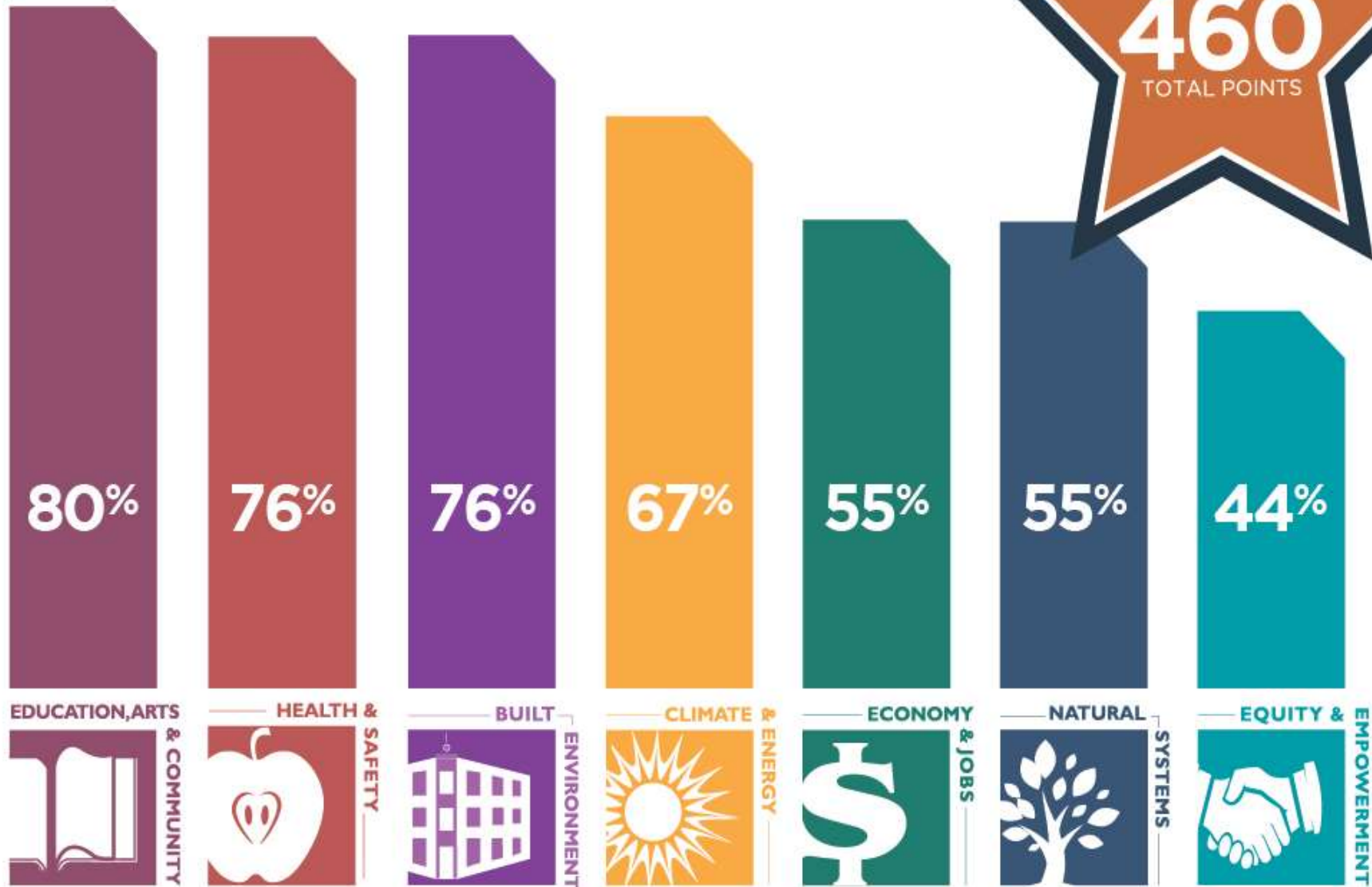
STAR Community Rating
2016

Peak Oil Report
2011

City of Lawrence Score

STAR GOAL AREAS

% OF AVAILABLE POINTS AWARDED



460

TOTAL POINTS

80%

76%

76%

67%

55%

55%

44%



Built Environment	Climate & Energy	Economy & Jobs	Education, Arts, & Community	Equity & Empowerment	Health & Safety	Natural Systems	Innovation & Process
BE-1: Ambient Noise & Light	CE-1: Climate Adaptation	EJ-1: Business Retention & Development	EAC-1: Arts & Culture	EE-1: Civic Engagement	HS-1: Active Living	NS-1: Green Infrastructure	IP-1: Best Practices & Processes
BE-2: Community Water Systems	CE-2: Greenhouse Gas Mitigation	EJ-2: Green Market Development	EAC-2: Community Cohesion	EE-2: Civil & Human Rights	HS-2: Community Health	NS-2: Biodiversity & Invasive Species	IP-2: Exemplary Performance
BE-3: Compact & Complete Communities	CE-3: Greening the Energy Supply	EJ-3: Local Economy	EAC-3: Educational Opportunity & Attainment	EE-3: Environmental Justice	HS-3: Emergency Management & Response	NS-3: Natural Resource Protection	IP-3: Local Innovation
BE-4: Housing Affordability	CE-4: Energy Efficiency	EJ-4: Quality Jobs & Living Wages	EAC-4: Historic Preservation	EE-4: Equitable Services & Access	HS-4: Food Access & Nutrition	NS-4: Outdoor Air Quality	IP-4: Good Governance
BE-5: Infill & Redevelopment	CE-5: Water Efficiency	EJ-5: Targeted Industry Development	EAC-5: Social & Cultural Diversity	EE-5: Human Services	HS-5: Health Systems	NS-5: Water in the Environment	
BE-6: Public Parkland	CE-6: Local Government GHG & Resource Footprint	EJ-6: Workforce Readiness	EAC-6: Aging in the Community	EE-6: Poverty Prevention & Alleviation	HS-6: Hazard Mitigation	NS-6: Working Lands	
BE-7: Transportation Choices	CE-7: Waste Minimization				HS-7: Safe Communities		

*Referenced in previous climate plans

Additional actions steps towards progress



- Housing Affordability
- Public Spaces
- Social & Cultural Diversity
- Civic Engagement
- Voter Turnout Rate

- Community Health & Health System
- Safe Communities
- Green Stormwater Infrastructure
- Natural Resource Protection



STAR Integration

STAR provides opportunity to support current community planning efforts:

- Comprehensive Plan re-write (Plan 2040)
- City Commission Strategic Planning & Metrics
- Community Health Plan
- Food System Plan
- T2040 Transportation Plan





What we've
learned

Flooding prompts closure of county road south of Lawrence

Because of high water, the Douglas County Sheriff's Office closed shortly after 3 p.m. Sunday the roadway from the intersection of East 1000 Road and North 1075 Road to the intersection of North 1200 and East 1135 Road.

Summer storms drench Kansas City with 9 inches of rain

BY ROBERT A. CRONKLETON
bcronkleton@kcstar.com

Rainfall totals
From Aug. 20 - Aug. 21

Summer storms have drowned Kansas City with nearly three times the normal amount of rain since July. The storms dumped as much as 9 inches of rain on Kansas City overnight Monday, causing historic flooding. It was the third time in less than a month where many parts of the metro area saw more than 6 inches of rain, according to the National Weather Service in Pleasant Hill.



Climate report warns of growing risk and terrible costs for US

BY SETH BORENS
Associated Press

WASHINGTON
As people rebuke two major hurricanes in California's catastrophic wildfires recede, a new federal report says that these types of weather disasters are becoming more frequent in the United States. The White House

is increasing occurrence," said report co-author Kristie Ebi, a University of Washington public health professor. She said global warming is already harming people's




Evacuation orders were issued Tuesday for Olathe, a northwest Missouri. According to Mayor Rhonda Harrington, 26 residents decided to stay until they couldn't stay any longer. Lewis and Clark Village was largely evacuated.

Town near Atchison 'self-evacuating' as flooding threatens

Evacuation orders were issued Tuesday for Olathe, a northwest Missouri. According to Mayor Rhonda Harrington, 26 residents decided to stay until they couldn't stay any longer. Lewis and Clark Village was largely evacuated.

Evacuation orders were issued Tuesday for Olathe, a northwest Missouri. According to Mayor Rhonda Harrington, 26 residents decided to stay until they couldn't stay any longer. Lewis and Clark Village was largely evacuated.



What does the
next decade
hold?

Local Governments are taking bolder actions

CLIMATE GENTRIFICATION

Has Climate Gentrification Hit Miami? The City Plans to Find Out

By onEarth | Mar. 11, 2019 11:05AM EST

CLIMATE



Missoula Co. adopts resolution to go carbon-free

by McKayla Haack | Thursday, March 14th 2019



NEXT CITY

Inspiring Better Cities

Kansas City Will Make Its Government 100 Percent Carbon-Free by Next Year



RACHEL KAUFMAN

MARCH 12, 2019



HIGH IMPACT PRACTICES FOR LOCAL GOVERNMENTS TO REDUCE EMISSIONS





CLIMATE RESILIENCE AND ADAPTATION

ACKNOWLEDGEMENTS

- Climate Protection Task Force members
- Peak Oil Task Force members
- Current and past Sustainability Advisory Members
- Current and past City and County Commissioners
- Community Organizations
- Residents of Lawrence
- Community data partners
- Diane Stoddard
- Craig Weinaug & Sarah Plinsky
- Eileen Horn
- Helen Schnoes
- Sustainability interns
- City of Lawrence and Douglas County staff



“I have discovered in life that there are ways of getting almost anywhere you want to go, if you really want to go.”

— Langston Hughes

