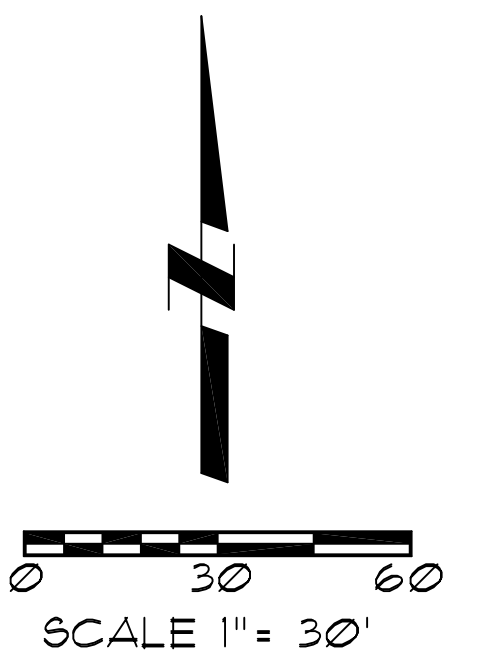


CONCEPT PLANT SCHEDULE

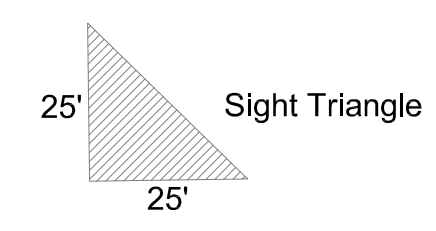
	LARGE SHADE TREES	25
	MEDIUM SHADE TREES	21
	COLUMNAR DECIDUOUS TREES	5
	EVERGREEN TREES	19
	NARROW EVERGREEN TREES	16
	ORNAMENTAL TREE	11
	SPREADER EVERGREEN SHRUB	59
	DECIDUOUS SHRUB 1	26
	LOW SPREADING EVERGREEN	40
	SMALL DECIDUOUS SHRUB	8
	LARGE ORNAMENTAL SHRUB	12
	MEDIUM ORNAMENTAL SHRUB	62

Landscape Note:

Species, sizes and additional details will be provided at time of final plan.



**Preliminary Landscape Plan
South Hills No.3,
Second Replat**
Lawrence, Kansas



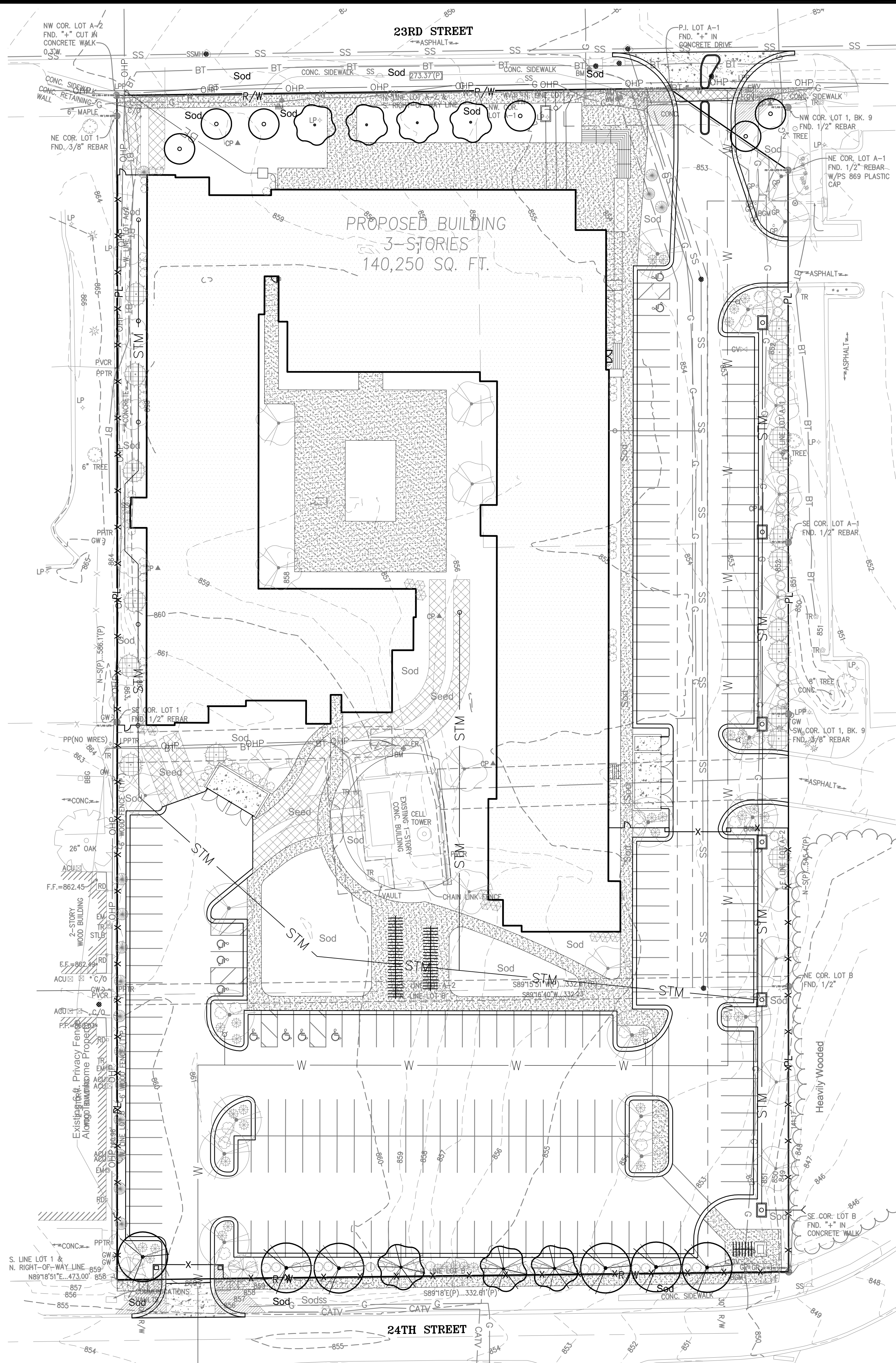
LS-1



Oppermann LandDesign, LLC
Land Planning + Landscape Architecture
18990 West 117th Street
Olathe, Kansas 66061
oppermannlanddesign.com
pete@opperland.com
913.894.9407

12/31/2018

LS-1



PLANT SCHEDULE

TREES	QTY	BOTANICAL NAME / COMMON NAME	CONT	CAL
	4	Acer truncatum 'Warren Red' / Pacific Sunset Maple	B & B	1.5" Cal
	6	Cercis canadensis / Oklahoma Redbud	B & B	1.5" Cal
	6	Quercus bicolor / Swamp White Oak	B & B	2" Cal
	3	Syringa reticulata 'Ivory Silk' / Ivory Silk Japanese Tree Lilac	B & B	2" cal.

General Landscape Notes:

- Contractor shall verify the existence and location of all utilities before starting any work.
- Contractor shall verify all landscape material quantities and shall report any discrepancies to the Landscape Architect prior to installation.
- Contractor shall make no substitutions without the approval of the Landscape Architect.
- Contractor shall stake layout plan in the field and shall have the layout approved by the Landscape Architect before proceeding with the installation.
- All tree dishes shall be treated with the pre-emergent herbicide Pre M 60 DG (granular) or an approved equal in accordance with the manufacturer's instructions.
- All lawn areas as noted shall be fertilized, sodded with a Turf-Type Tall Fescue grass seed blend including public ROW. See plan labels.
- Fertilizer for trees shall be a balanced fertilizer applied at rates per manufacturers recommendations and soil test results.
- Contractor shall warranty all landscape work and plant material for a period of one year from date of acceptance of the work by the Owner.
- Any plant material which dies during the one year warranty period shall be replaced by the Contractor during normal planting seasons.
- Contractor shall be responsible for maintenance of the plants until completion of the job and acceptance by the Owner. After initial acceptance, maintenance shall be by the owner.
- All plant names on the plant list conform to the Standardized Plant Names prepared by the American Joint Committee on Horticultural Nomenclature or to names generally accepted in the nursery trade.
- All plant material shall be specimen quality stock as determined in the "American Standards For Nursery Stock" published by The American Association of Nurseryman, free of plant diseases and pest, of typical growth of the species and having a healthy, normal root system.
- Sizes indicated on the plant list are the minimum, acceptable size. In no case will sizes less than the specified sizes be accepted.
- Plants shall not be pruned prior to delivery to the site or after installation except for those branches that have been damaged in some way.
- Plants shall not have name tags removed prior to final inspection.
- Contractor shall be responsible for weed control on the project during and after construction until the project is turned over to the owner.
- All plantings shall receive a commercial transplant additive per manufacturers recommended rates and instructions for application.

DIRECTION OF TREE STAKES:
ONE SOUTHEAST
ONE SOUTHWEST
ONE NORTH

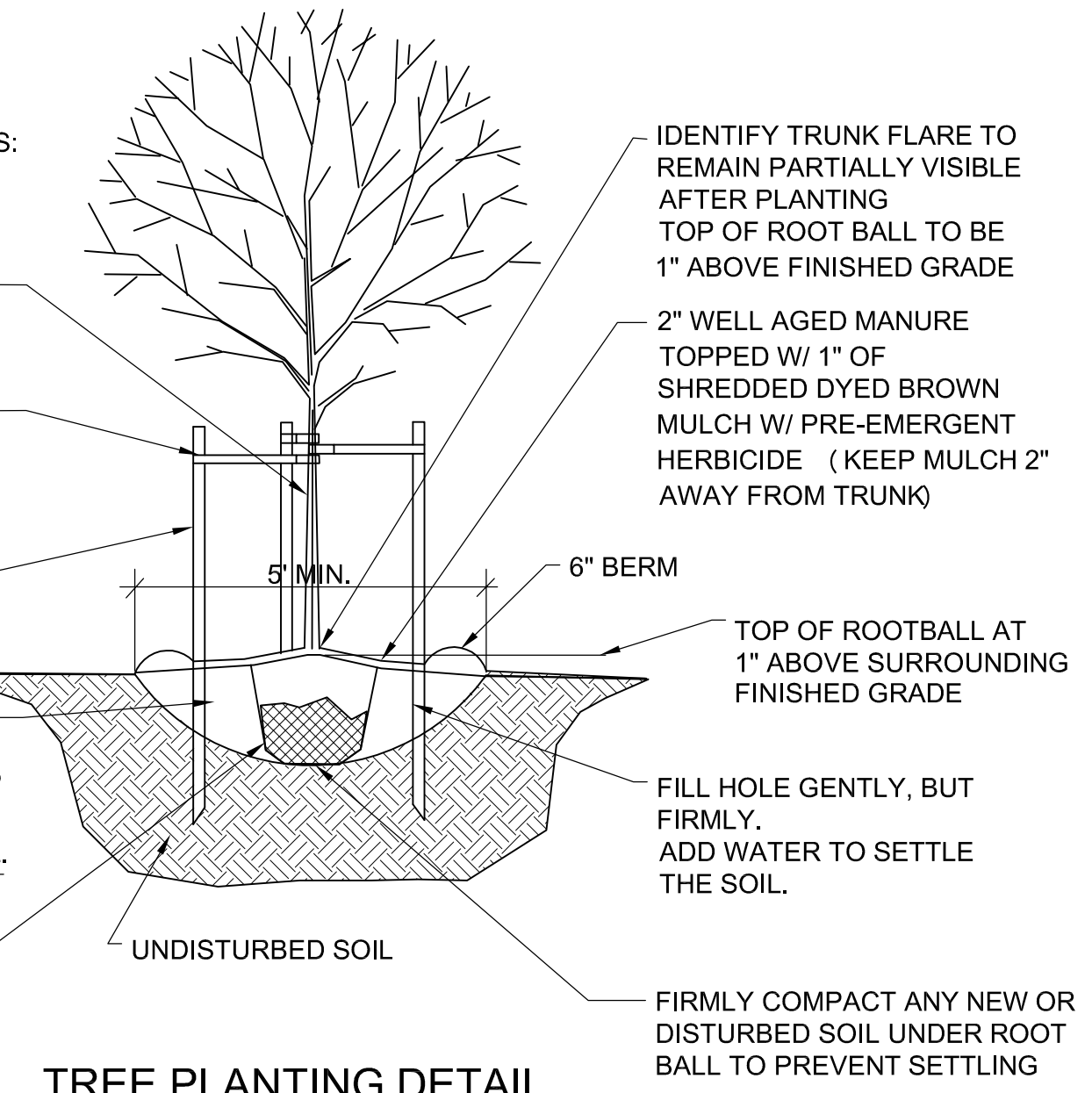
PLASTIC SPIRAL TREE WRAP COIL FROM BASE TO LOWEST BRANCHES

WEBBED ARBOR TIE TAPE LOOP AROUND TREE TO BE 6"-8" LARGER THAN TRUNK DIAMETER

(3) 6" STEEL "T" POSTS

DIG SHALLOW, BROAD HOLE: 3 TIMES THE DIAMETER OF ROOT BALL AND ONLY AS DEEP AS ROOT BALL. BACKFILL WITH 1/2 EXISTING SOIL AND 1/2 TOPSOIL.

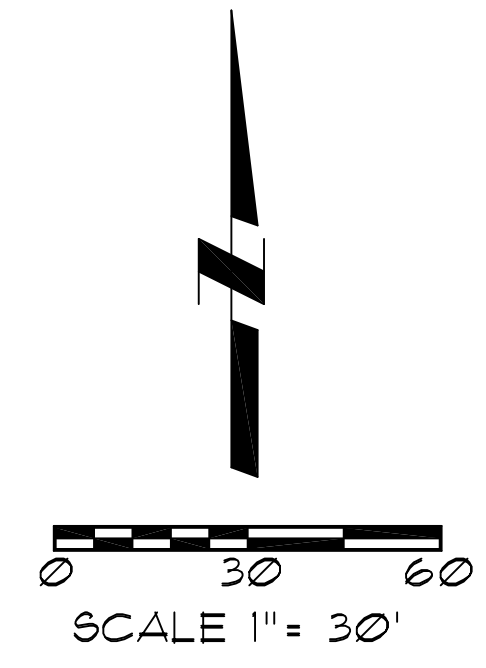
CUT AND REMOVE BURLAP (REMOVE METAL CAGE FROM SIDES AND TOP OF BALL)



TREE PLANTING DETAIL
NO SCALE

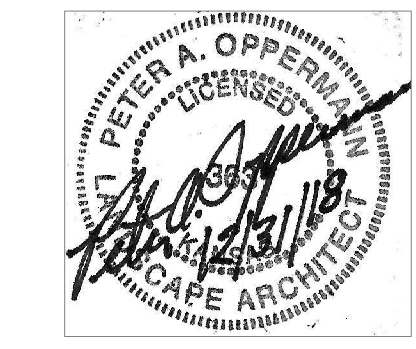
Transplant Additives:

- Apply a commercial transplant additive (approved by the Landscape Architect) to all trees, shrubs and groundcover at rates recommended by the manufacturer during the planting. This item shall be subsidiary to other planting items.
- Transplant additive shall be Plant Health Care Inc., "Mycor Tree Saver" mycorrhizal fungal transplant inoculant or equivalent equal containing the appropriate species of mycorrhizal fungi and bacteria, fungi stimulant, water retaining agents, mineral & organic nutrients and inert ingredients.
- Demonstrate installation of all transplant additives for this project to the Landscape Architect. Provide actual additive product as evidence of sufficient quantity of product. (Empty product bags to be stockpiled for inspection by the Landscape Architect prior to disposal).
- Number of transplant additive packets per tree, shrub or groundcover shall be applied according to the manufacturer's recommended rates and instructions. For all plants the packet mix shall be evenly distributed into the upper approximately 8" of backfill soil next to the rootball. Do not place mix in the bottom of the planting pit.
- Furnishing and application of transplant additive shall be subsidiary to the planting operations.



**Master Street Tree Plan
South Hills No.3,
Second Replat**
Lawrence, Kansas

Utility Note:
Utilities shown on plan are diagrammatic and some may be missing. Before starting any construction call appropriate locating service. In Kansas call 1-800-DIG-SAFE (344-7233) to have utilities located.



LS-2

Oppermann LandDesign, LLC
Land Planning & Landscape Architecture
18990 West 117th Street
Olathe, Kansas 66061
pete@oppermannland.com
913.894.9407

12/31/2018

LS-1