

LAWRENCE CITY CODE AND COMMUNITY CATS

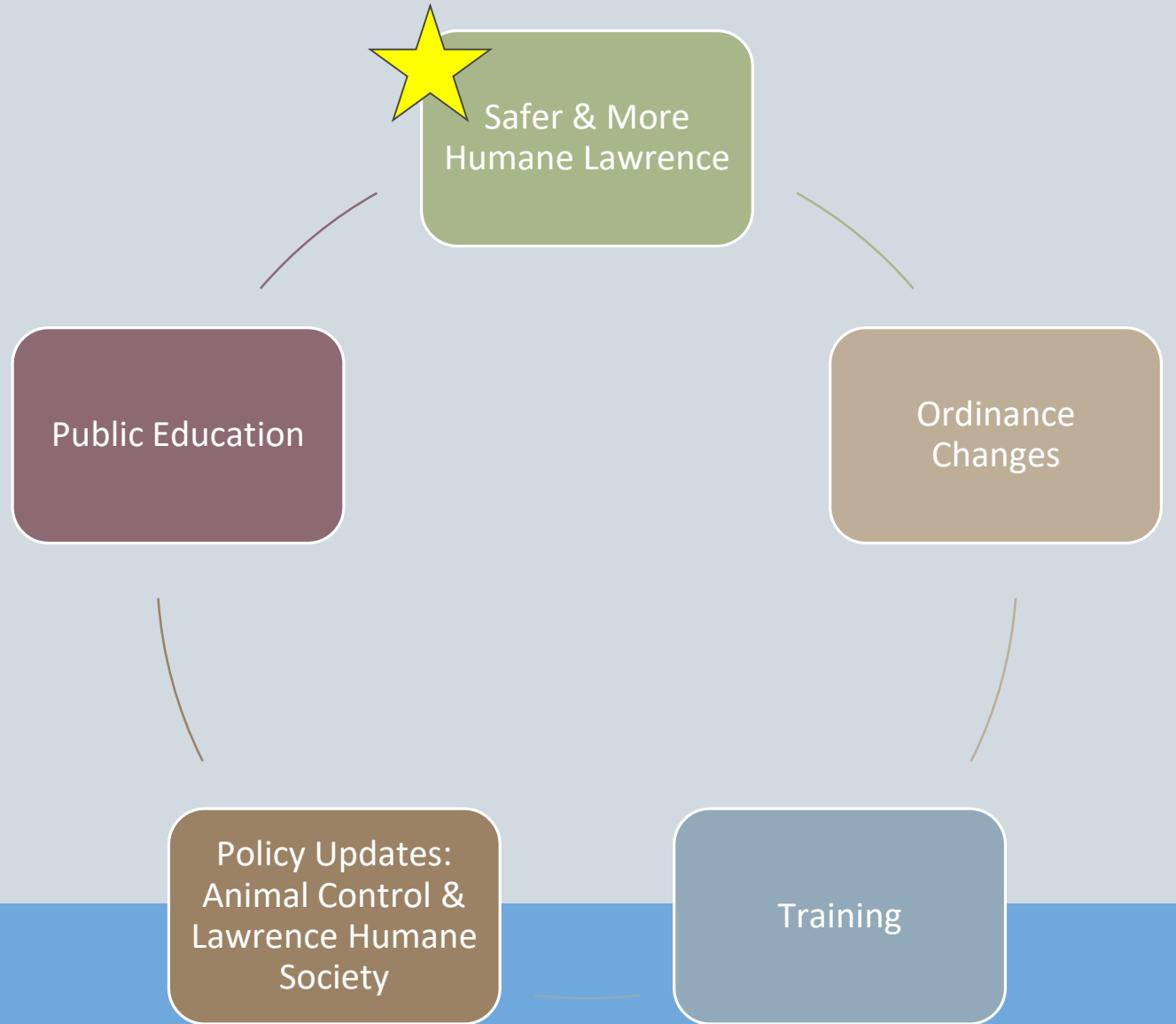


MEGHAN SCHEIBE
INTERIM EXECUTIVE DIRECTOR

KATIE BARNETT
ANIMAL WELFARE COUNSEL



OUR END GOAL



PROGRESS SINCE DECEMBER 11

Community Comment

Collaboration (City staff, Animal Control, and Lawrence Police Department)

Lawrence Listens

Stakeholders

WHAT IS A COMMUNITY CAT?

A cat that is unsocialized to humans and has a temperament of extreme fear or resistance to contact with humans, and that exhibits a straight-line cutting of the tip of its ear to indicate that it has been sterilized. (TNR)

-unowned

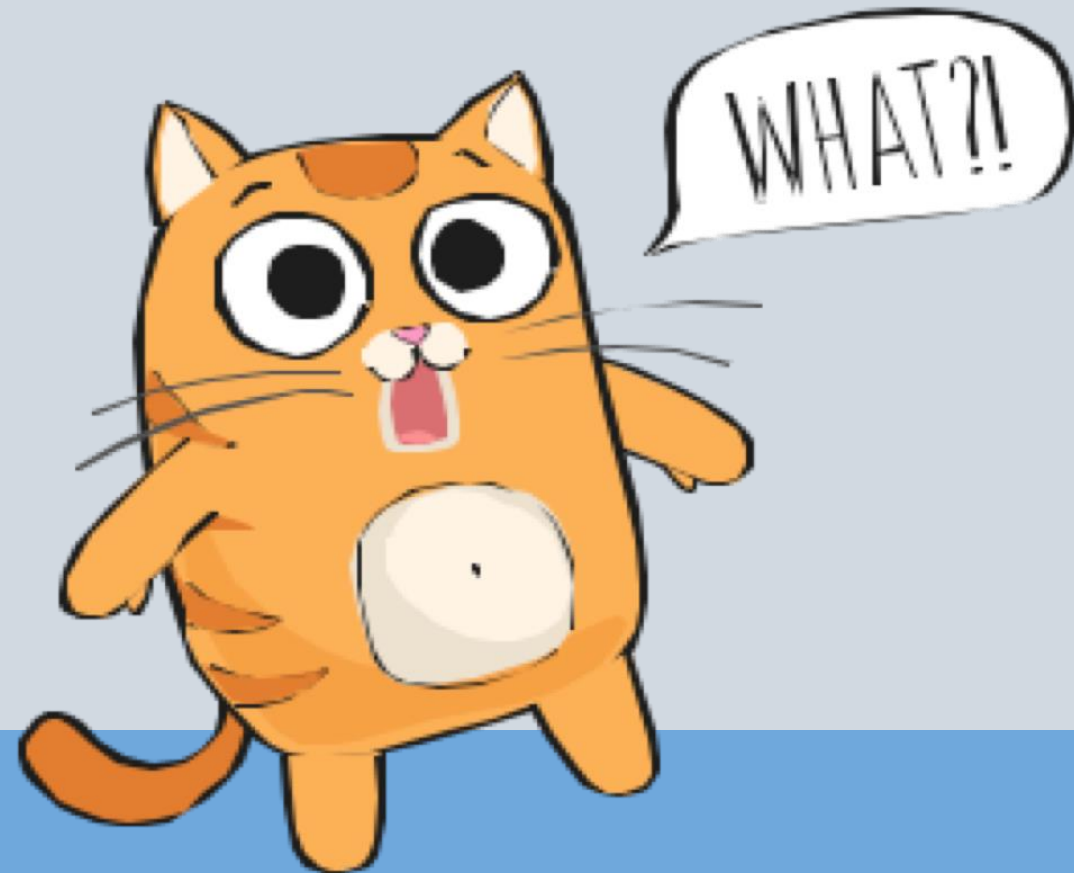
-not impounded



ABOUT TRAP NEUTER RELEASE (TNR)

What is it?

And, what isn't it?



LAWRENCE'S COMMUNITY CAT PROGRAM

A Community-Based Initiative

YAY



PROGRAM IMPLEMENTATION: PHASE 1

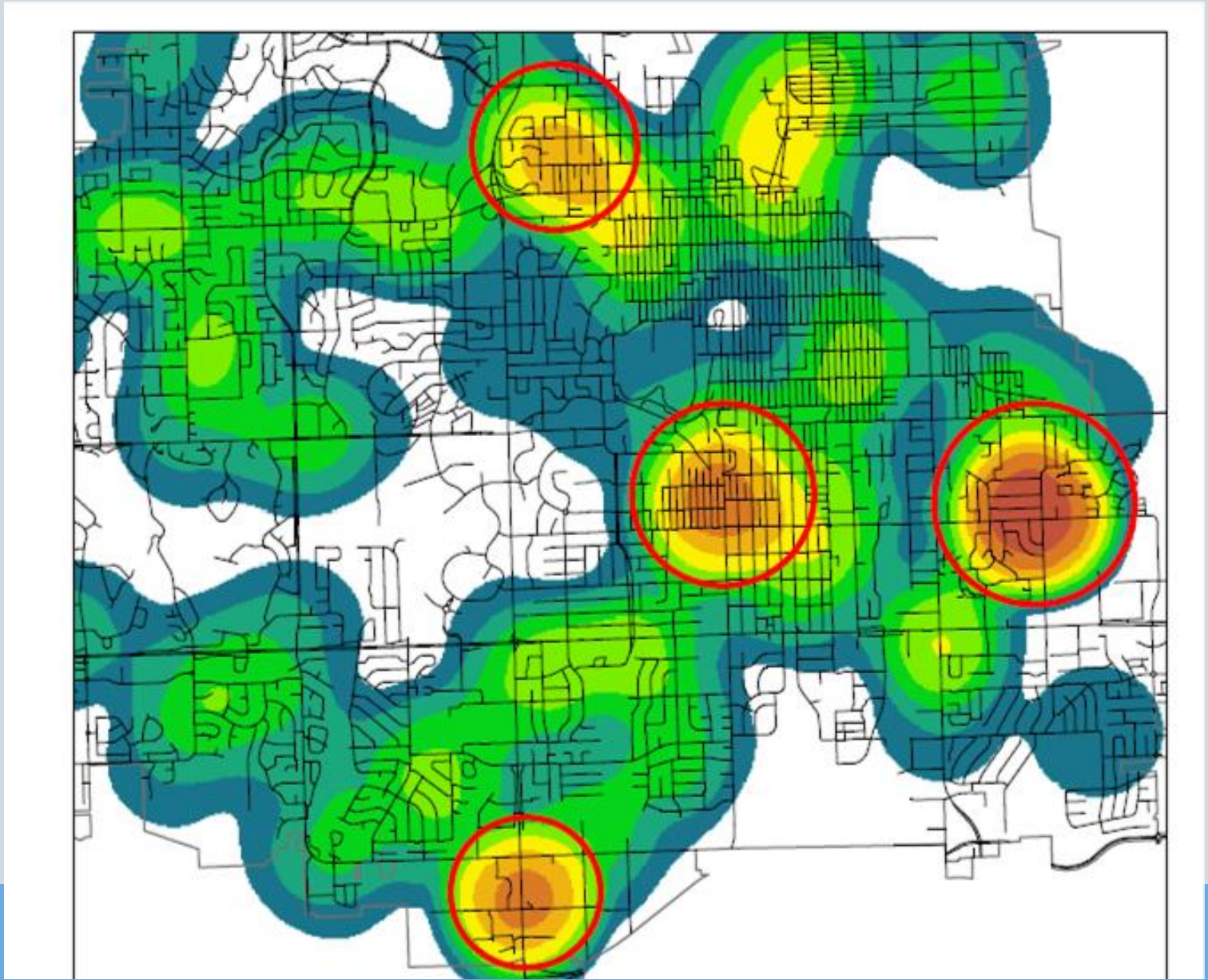
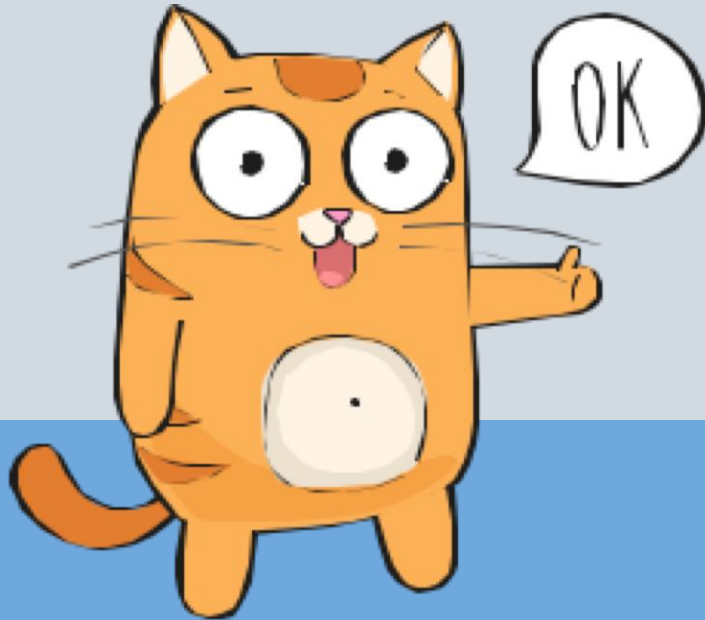
Lawrence Humane Society will:

- Offer traps to the community (Day 1) and community cat TNR services for nominal fee
- Reallocate staff time to assist where needed
- Dedicate a portion of our new community programs manager position (hired February 2019) to program
- Offer, prioritize, and recruit for volunteer opportunities that otherwise were not available
- Design brochures for the City as notices to correct
- Solicit funding via grant applications and seek private financial support
- Proactively target and launch strategic TNR initiatives in known hot spot neighborhoods

Animal Control will:

- Begin referring nuisance complaints and at-large complaints to LHS

COMMUNITY HOTSPOTS



PROGRAM IMPLEMENTATION: PHASE 2

Lawrence Humane Society will:

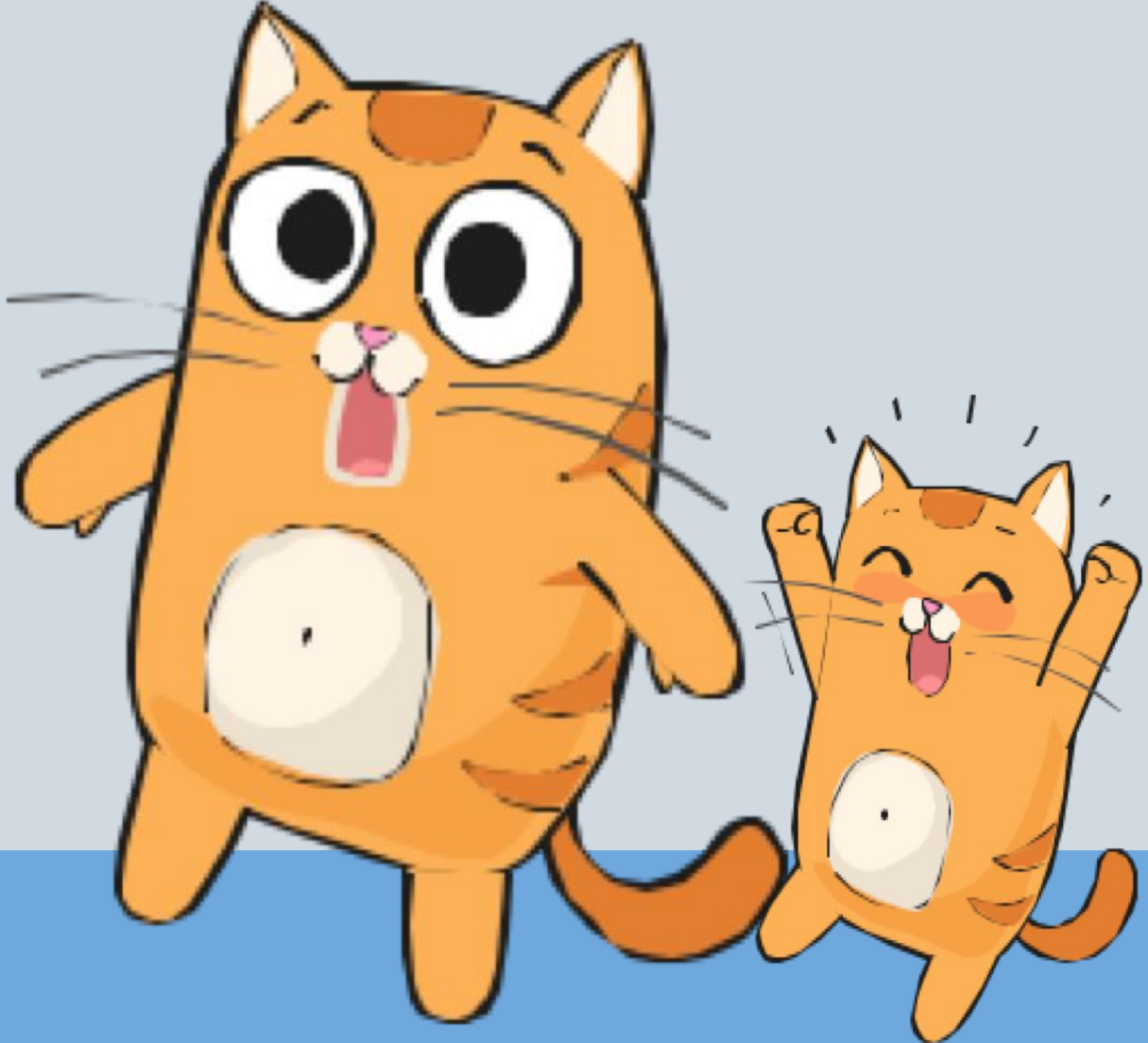
- Offer TNR services as a community service to complainants (funding secured in Phase 1 to subsidize)
- Ongoing offering of TNR services at a minimal fee for colony caretakers
- Upon receipt of grant funding, implement full program
- Partner with Animal Control and the City to further develop mapping of hot spot neighborhoods based on complainant information, if possible (not currently accessible to LHS)

PROGRAM IMPLEMENTATION: PHASE 3

Lawrence Humane Society will have received funding for a robust, LHS-staffed program, which includes:

- Working with Animal Control to collect data
- Utilizing data collected for ongoing mapping to best determine proactive community targeting
- Progress reporting to key community partners and the community at large
- Planning for ongoing sustainability and implementing initiatives to ensure long-term success of program

COLLABORATION



QUESTIONS?



lawrencehumane.org

