

LOUISIANA STREET

Walgreen's
400 W. 23rd Street

OHIO STREET

W. 23rd STREET

Sidewalk Detour

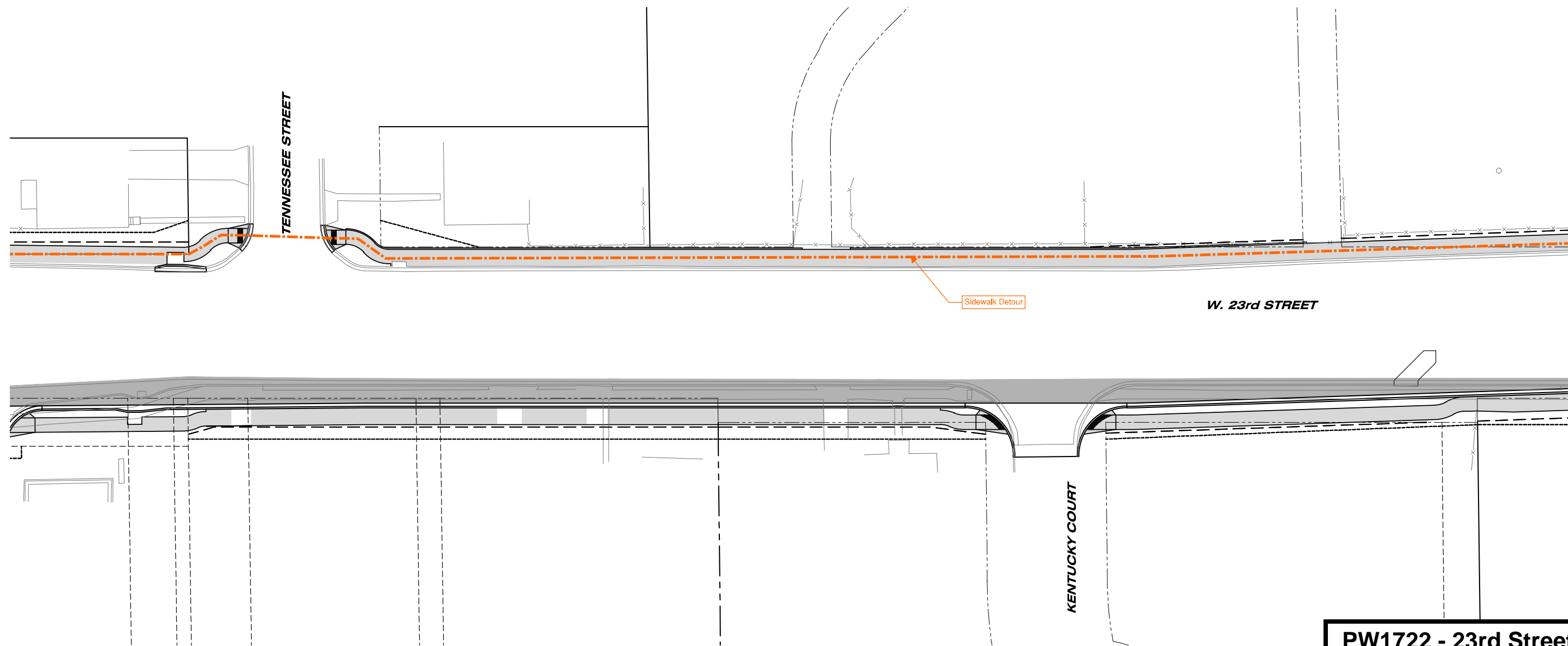
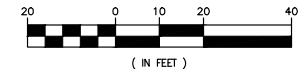
LOUISIANA STREET

SIDEWALK CLOSED
←
CROSS HERE

**PW1722 - 23rd Street
Improvements**
Potential Sidewalk Closure and
Subsequent Detour Exhibit

No.	Revision	By	Date
CONSTRUCTION PLANS FOR THE CITY OF LAWRENCE, KANSAS W. 23RD STREET GEOMETRIC IMPROVEMENTS 23RD STREET CONSTRUCTION PLAN - STA. 50+00.00 TO 56+00.00			
 PEC PROFESSIONAL ENGINEERING CONSULTANTS, P.A. 1263 SW TOPEKA BLVD. TOPEKA, KS 66612 785-233-6300 www.pec1.com			
Designed by	JLF, AMD	Job No.	171385-001
Drawn by	PEC	Date	AUGUST 2018
		Sht No.	CT108
		Sht.	20 of 90

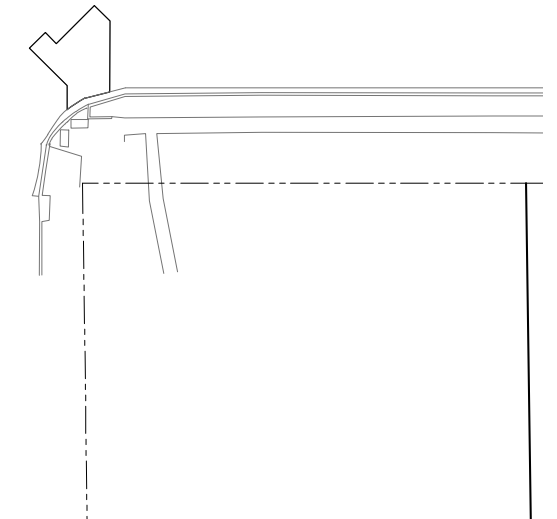
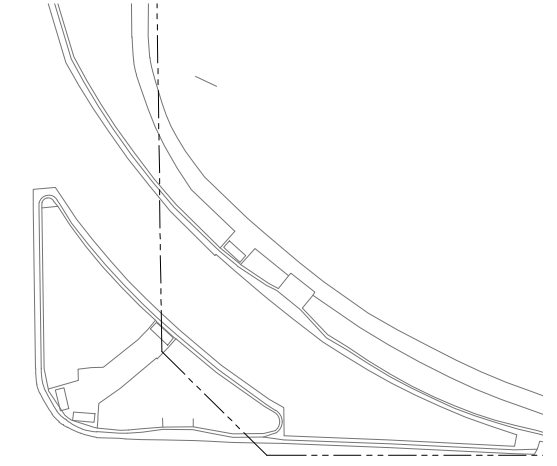
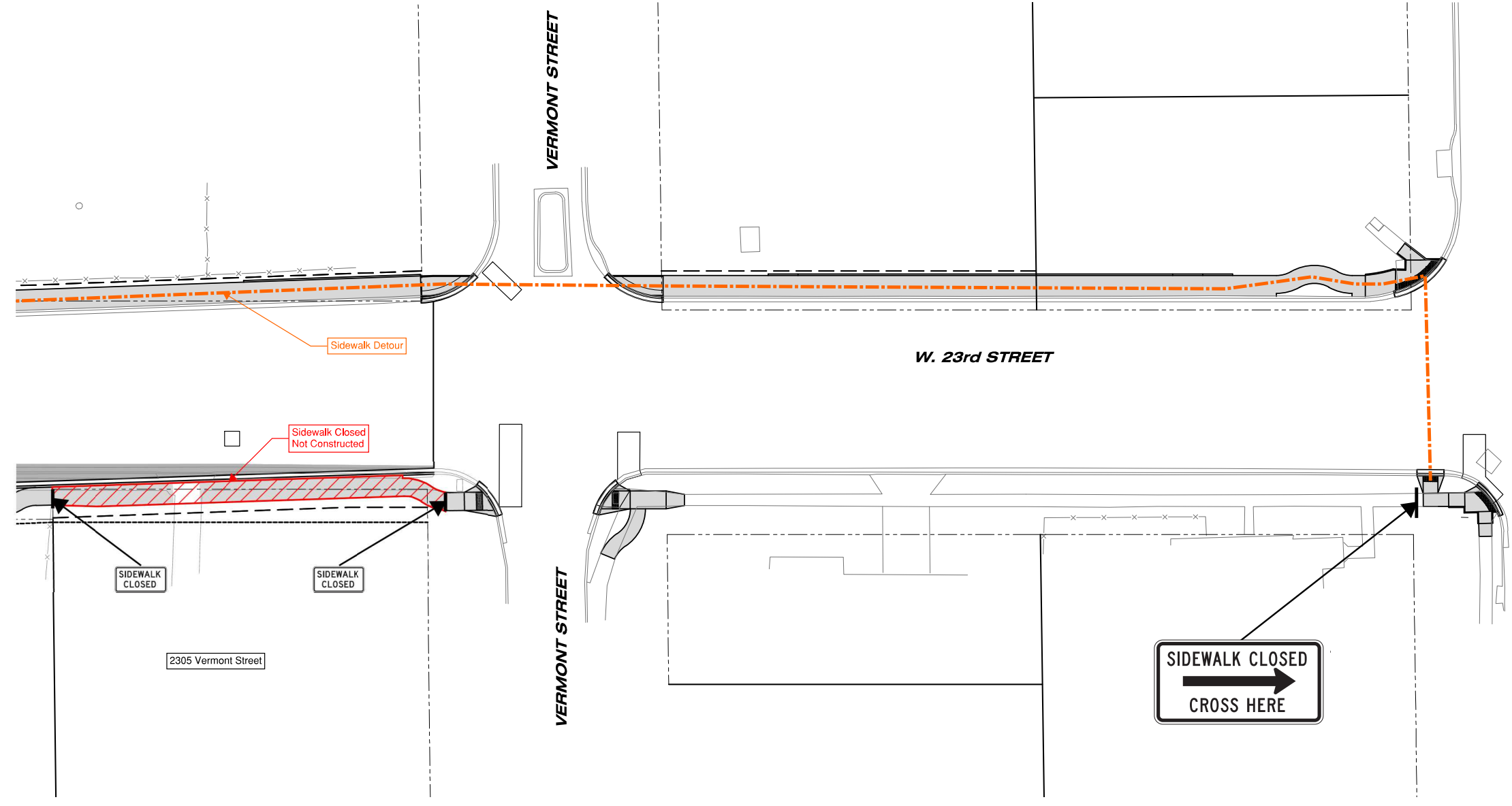
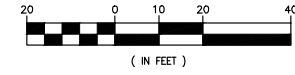
Saved: 08-01-2018 11:56:24 AM by TERRY SANDERS
 Plot Scale: 1/20, 08-27-2018 2:24:27 PM by TERRY SANDERS
 U:\Topeka\2017\171385\001\Main-Trans\Drawings\Plans\07
 STREET CONSTRUCTION PLAN - STA. 50+00.00 TO 56+00.00




Saved: 08-21-2018 9:15:31 AM by JLF
 Plot Scale: 1:20, 08-27-2018 2:25:22 PM by DORY SANDERS
 U:\Topeka\2017\171385\001\Multi-Traffic Drawings\Plans\07 - STREET CONSTRUCTION PLAN - STA. 56+00.00 TO STA. 62+00.00

PW1722 - 23rd Street Improvements
 Potential Sidewalk Closure and Subsequent Detour Exhibit

No.	Revision	By	Date
CONSTRUCTION PLANS FOR THE CITY OF LAWRENCE, KANSAS W. 23RD STREET GEOMETRIC IMPROVEMENTS 23RD STREET CONSTRUCTION PLAN - STA. 56+00.00 TO STA. 62+00.00			
		PROFESSIONAL ENGINEERING CONSULTANTS, P.A. 1263 SW TOPEKA BLVD. TOPEKA, KS 66612 785-233-6300 www.pec1.com	
Designed by	JLF, AMD	Job No.	171385-001
Drawn by	PEC	Date	AUGUST 2018
		Sht No.	CT110
		Sht.	22 of 90



**PW1722 - 23rd Street
Improvements
Potential Sidewalk Closure and
Subsequent Detour Exhibit**

No.	Revision	By	Date
CONSTRUCTION PLANS FOR THE CITY OF LAWRENCE, KANSAS W. 23RD STREET GEOMETRIC IMPROVEMENTS 23RD STREET CONSTRUCTION PLAN - STA. 62+00.0 TO STA. 68+00.00			
 PEC PROFESSIONAL ENGINEERING CONSULTANTS, P.A. 1263 SW TOPEKA BLVD. TOPEKA, KS 66612 785-233-8300 www.pec1.com			
Designed by	JLF, AMD	Job No.	171385-001
Drawn by	PEC	Date	AUGUST 2018
		Sht No.	CT112
		Sht.	24 of 90

Saved: 08-21-2018 9:14:31 AM by JLF
 Plot Scale: 1/20, 08-27-2018 3:20:05 PM by DORY SANDERS
 U:\Topeka\2017\171385\001\Multi-Frame Drawings\Plans\07 - STREET CONSTRUCTION PLAN - STA. 62+00.00 TO STA. 68+00.00