



# South Lawrence Trafficway

---

Lawrence City Commission Meeting  
October 16, 2018

PROJECT #:  
10-23 KA-3634-01

---



- Project Overview
- SEIS Details & Process
- Public Engagement Plan
- Upcoming Events
- Contact Information

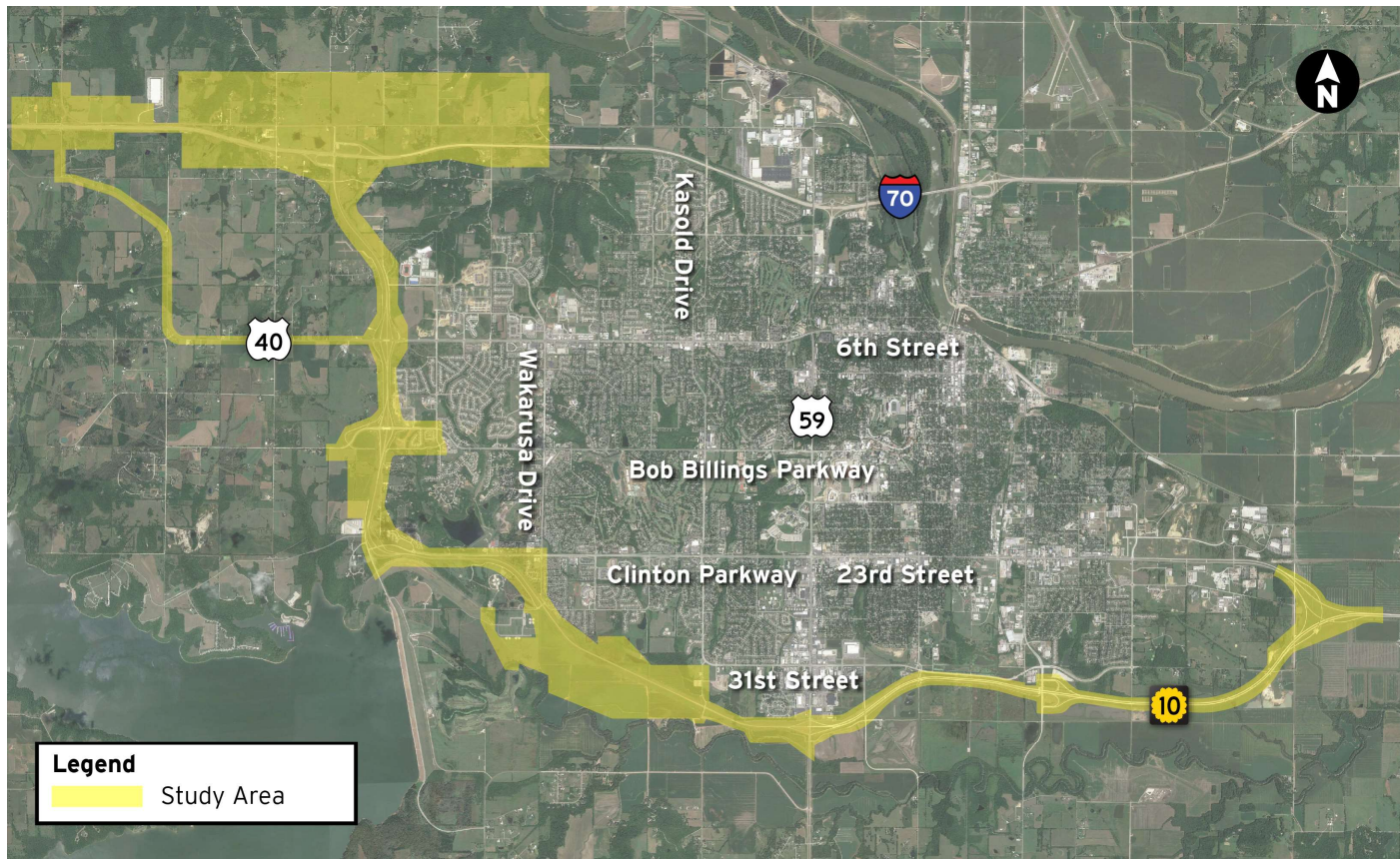
## Project Overview - Why Another Study?

- **2014-2016:** KDOT conducted the K-10 West Leg Concept Study, which included reevaluation of the original EIS.
- **Spring 2016:** the public raised concerns regarding the proposed access at Farmer's Turnpike, which led to KDOT & FHWA proposing the need for additional environmental evaluation through Supplemental Environmental Impact Statement (SEIS).
- **September 2018:** SEIS begins, and will last 3 years

## What is a SEIS?

- An **Environmental Impact Statement** (EIS) is a document required by the Federal Highway Administration to evaluate the impact proposed improvements will have on the natural and manmade environment.
- A **Supplemental Environmental Impact Statement** (SEIS) reviews the findings of an existing EIS. A SEIS considers new or additional environmental impacts based on the introduction of new improvement options and/or major changes in the natural environment or communities.
- The South Lawrence Trafficway SEIS will evaluate if – and how – upgrading the corridor to a four-lane freeway, modifying access, and exploring new funding mechanisms alter the impacts and recommendations previously identified through the 1990 EIS and 2008 East Leg EIS.

# SEIS Study Area




- The West Leg: just north of I-70 at North 1800 Road (Farmer's Turnpike) to US-59/Iowa Street.
- The East Leg: begins at US-59/Iowa Street and continues to the existing K-10/23rd Street system interchange.
- The project study area also includes East 600 Road/Lecompton Road at Interstate 70 and U.S. 40 from K-10 to E 600 Road.

# SEIS Process



# SEIS Public Engagement Activities and Schedule

	2018		2019				2020				2021			
	Q3	Q4	Q1	Q2	Q3	Q4	Q1	Q2	Q3	Q4	Q1	Q2	Q3	Q4
<b>Create Stakeholder Engagement Plan</b>	🕒													
<b>KDOT &amp; FHWA Review Meeting of Stakeholder Engagement plan</b>	🕒													
<b>Stakeholder Coordination</b>														
Advisory Group		▲	▲				▲		▲					
Elected Official Coordination		■	■				■		■					
Stakeholder Meetings	As needed and requested													
Focus Groups			▲											
<b>Public Coordination</b>														
Public Meetings		▲	▲						▲					
Community Presentations	As needed and requested													
Audio/Web Meeting*									●					
Kiosks or Community Displays at Community Events*			●						●					
<b>Surveys</b>			●				●							
<b>Develop Materials/Collateral/Web</b>														
Project Website Launch		🕒												
Informational Fliers Distributed*	●		●				●				●			
Compile Final Public Engagement Report/Log	Ongoing throughout project 													

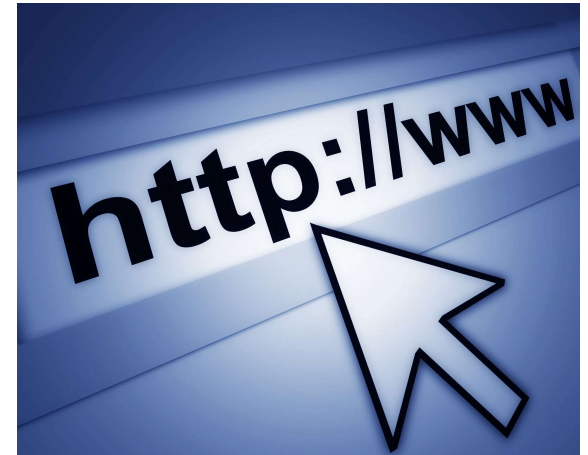
**Legend**

- 🕒 Initial Start-up Activity
- Event / Activity
- ▲ Meeting
- Presentation

\*Dates for these activities are subject to change.

## Upcoming Events

- **Project Website:** still under development, will go live prior to the first public meeting
- **Advisory Group:** First meeting Thursday, October 18th
- **Public Meeting:** Tentatively Scheduled November





## Contact Information

- For any comments and questions, or to request a community presentation: [info@SLT-KS.org](mailto:info@SLT-KS.org)
- Aaron Frits, P.E.  
KDOT Project Manager  
785-296-4139  
[Aaron.Frits@ks.gov](mailto:Aaron.Frits@ks.gov)
- Laurie Arellano  
KDOT Director of Communications  
785-296-3956  
[Laurie.Arellano@ks.gov](mailto:Laurie.Arellano@ks.gov)

SLT | South Lawrence Trafficway