



700 NEW HAMPSHIRE



700 New Hampshire



700 NEW HAMPSHIRE DOWNTOWN LAWRENCE GROCERY STORE

PROJECT DESCRIPTION:

TWO LEVELS OF UNDERGROUND PARKING APPROX. 176 STALLS. 220 STALLS TOTAL

FIRST FLOOR GROCERY STORE WITH GARAGE ACCESS LOCATED IN A “FOOD DESERT”

TWO LEVELS ABOVE WILL HOUSE 69 APARTMENT UNITS

ADDITIONAL 25 STALLS STREET PARKING ALONG NEW HAMPSHIRE

STRENGTHEN THE TAX BASE: Sales tax, property taxes

JOB: ~ 120+ new jobs + 200 construction jobs

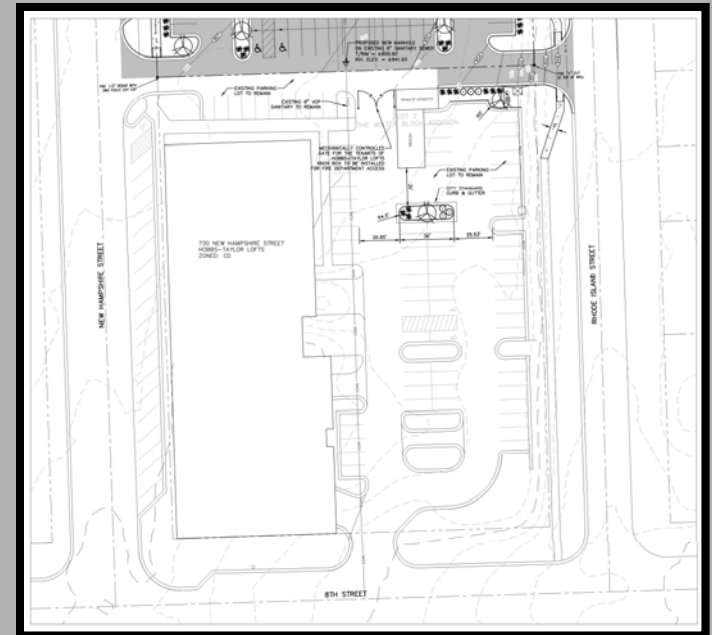
The “EXPERIENCE”



EXISTING SITE PLAN



↑
NORTH

[illegible]

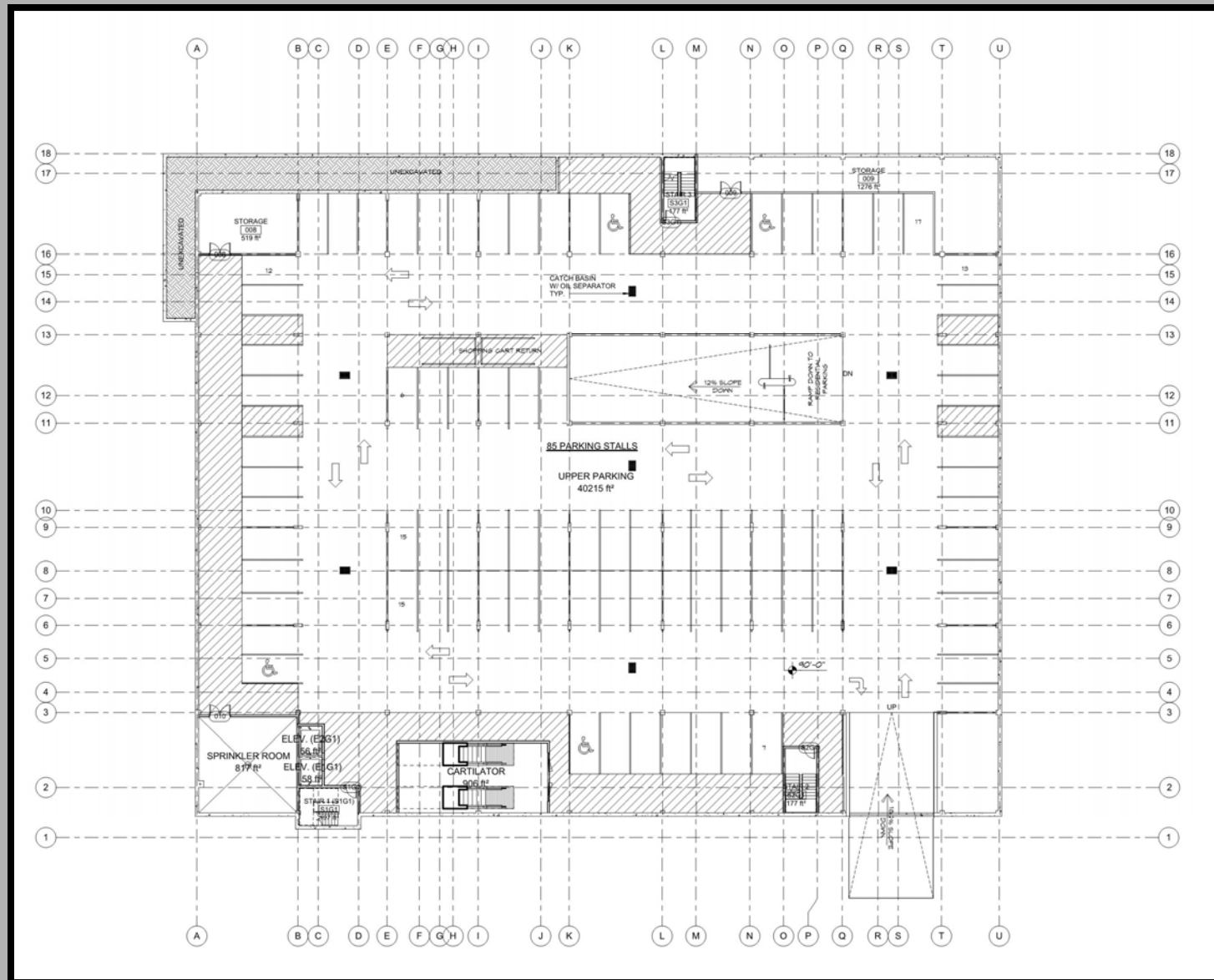
NORTH

This detailed architectural floor plan illustrates the layout of the Lower Parking garage. The plan is bounded by grid lines A through U horizontally and 1 through 18 vertically. Key features include:

- Parking Stalls:** A central area designated for 91 parking stalls, totaling 40,635 square feet.
- Storage Areas:** Two storage rooms are shown: one measuring 1,288 square feet in the upper right and another measuring 667 square feet in the center.
- Mechanical and Electrical Rooms:** A mechanical room (MECH) of 817 square feet and an electrical room (ELEC) of 519 square feet are located in the upper left. A smaller mechanical room (MECH) of 177 square feet is in the lower right.
- Staircase:** Stair 1 (S1G2) is located in the lower left, with an area of 197 square feet.
- Other Features:** The plan includes a catch basin with a width separator, various utility rooms, and areas marked as "UNDEVELOPED".
- Dimensions:** The overall dimensions of the garage are 200'-0" by 285'-0". Individual stall dimensions are typically 8'-0" by 20'-0".
- Grid Lines:** Horizontal grid lines are labeled A through U, and vertical grid lines are labeled 1 through 18.

↑
NORTH

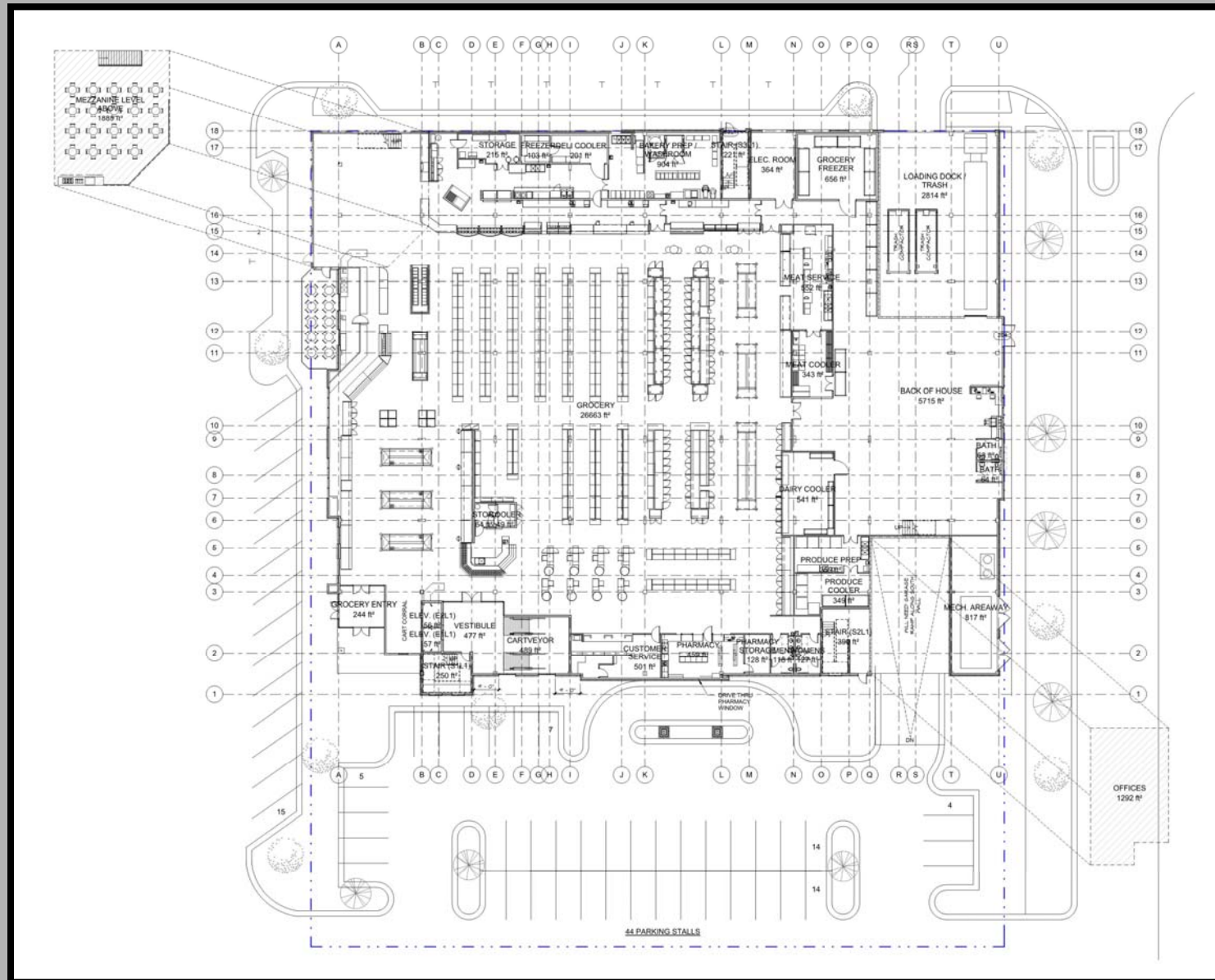
UNDERGROUND PARKING



UPPER LEVEL GROCERY PARKING



FIRST FLOOR GROCERY STORE



↑
NORTH

Architectural floor plan of the 1st floor, showing a central courtyard (10167 sq ft) and surrounding rooms including studios, bedrooms, a lounge, circulation, and stairs. The plan is overlaid with a grid system (A-U horizontally, 1-18 vertically). Dimensions are provided along the top, bottom, and left edges.

Rooms and Areas (sq ft):

- STAIR (S3) 21: 253
- STUDIO: 513
- 2 BED: 828
- 2 BED: 828
- 2 BED: 828
- 2 BED: 990
- 2 BED: 822
- 2 BED: 1039
- 2 BED: 991
- 1 BED: 697
- 1 BED: 699
- STUDIO: 513
- 2 BED: 978
- 1 BED: 704
- 1 BED: 704
- 1 BED: 704
- 1 BED: 704
- 1 BED: 701
- 2 BED: 991
- STUDIO: 513
- 2 BED: 978
- 1 BED: 741
- 1 BED: 741
- 1 BED: 699
- 1 BED: 699
- 1 BED: 697
- STUDIO: 513
- 2 BED: 1042
- ELEV. (E2L2): 59
- ELEV. (E1L2): 59
- STAIR (S1L2): 253
- STUDIO: 513
- 2 BED: 989
- 2 BED: 989
- STAIR (S2L2): 238
- STUDIO: 513
- DATA: 52
- 2 BED: 1027
- LOBBY: 914
- CIRCULATION: 4203
- COURTYARD: 10167
- COVERED WALK ABOVE: 1021

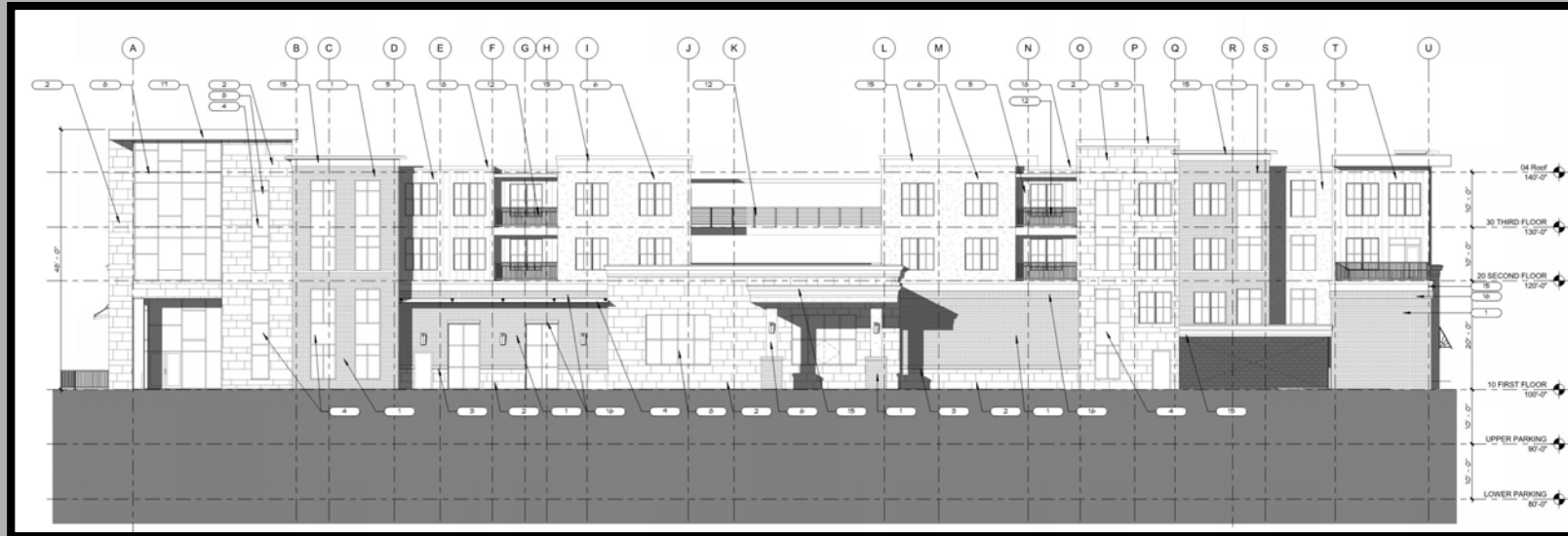
Grid Labels: A, B, C, D, E, F, G, H, I, J, K, L, M, N, O, P, Q, R, S, T, U (Horizontal); 1, 2, 3, 4, 5, 6, 7, 8, 9, 10, 11, 12, 13, 14, 15, 16, 17, 18 (Vertical).

Dimensions:

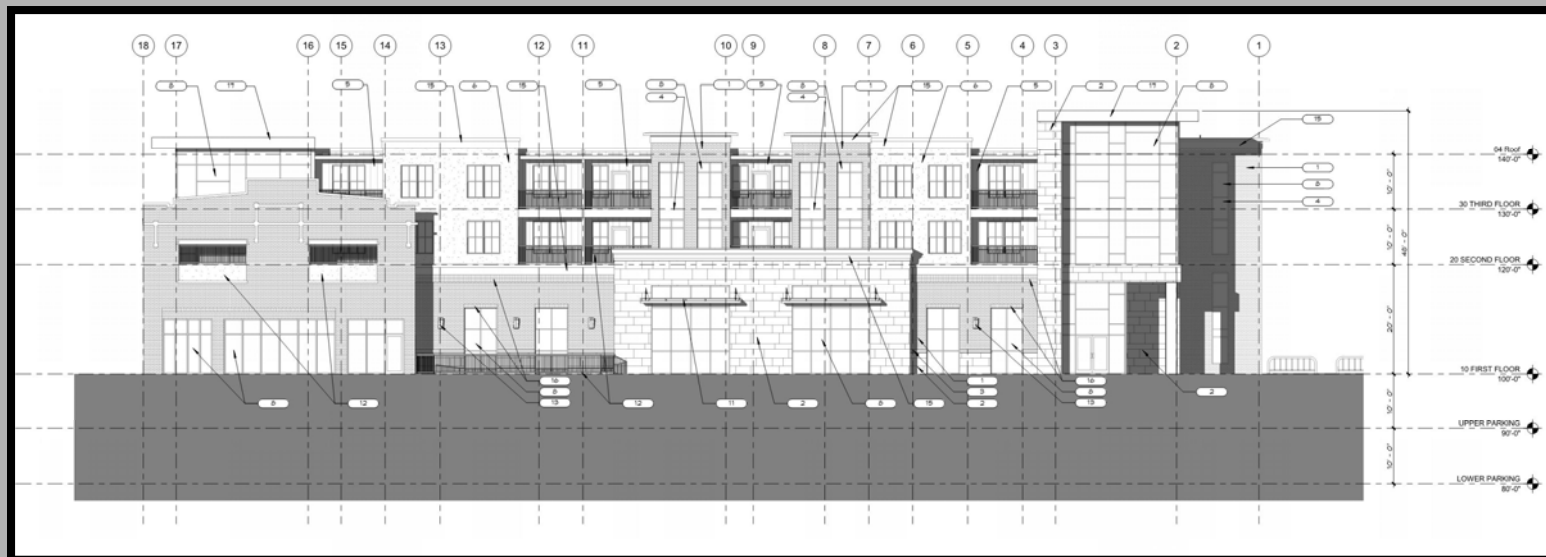
- Top: 302'-0" (Total), 12'-0" (B-C), 8'-5" (C-D), 8'-0" (D-E), 8'-0" (E-F), 8'-0" (F-G), 8'-0" (G-H), 8'-0" (H-I), 19'-0" (I-J), 8'-5" (J-K), 21'-0" (K-L), 12'-0" (L-M), 16'-0" (M-N), 8'-0" (N-O), 10'-0" (O-P), 16'-0" (P-Q), 8'-0" (Q-R), 12'-0" (R-S), 17'-0" (S-T), 17'-0" (T-U).
- Bottom: 302'-0" (Total), 12'-0" (B-C), 8'-5" (C-D), 8'-0" (D-E), 8'-0" (E-F), 8'-0" (F-G), 8'-0" (G-H), 8'-0" (H-I), 19'-0" (I-J), 8'-5" (J-K), 21'-0" (K-L), 12'-0" (L-M), 16'-0" (M-N), 8'-0" (N-O), 10'-0" (O-P), 16'-0" (P-Q), 8'-0" (Q-R), 12'-0" (R-S), 17'-0" (S-T), 17'-0" (T-U).
- Left: 18'-0" (1-2), 22'-0" (2-3), 10'-0" (3-4), 10'-0" (4-5), 10'-0" (5-6), 10'-0" (6-7), 10'-0" (7-8), 10'-0" (8-9), 10'-0" (9-10), 10'-0" (10-11), 10'-0" (11-12), 10'-0" (12-13), 10'-0" (13-14), 10'-0" (14-15), 10'-0" (15-16), 10'-0" (16-17), 10'-0" (17-18).



SOUTH ELEVATION



WEST ELEVATION



NORTH ELEVATION



EAST ELEVATION



NORTHWEST PERSPECTIVE



SOUTH PERSPECTIVE



NORTHEAST PERSPECTIVE



SOUTHWEST PERSPECTIVE



ARIAL VIEWS OF BORDERS AND HOBBS TAYLOR LOFTS

