

# Memorandum

## City of Lawrence

### Parks and Recreation Department

TO: Tom Markus, City Manager  
Diane Stoddard, Assistant City Manager  
Casey Toomay, Assistant City Manager  
Brandon McGuire, Assistant to the City Manager

FROM: Ernie Shaw, Interim Director, Parks and Recreation Department

DATE: Tuesday, March 28, 2017

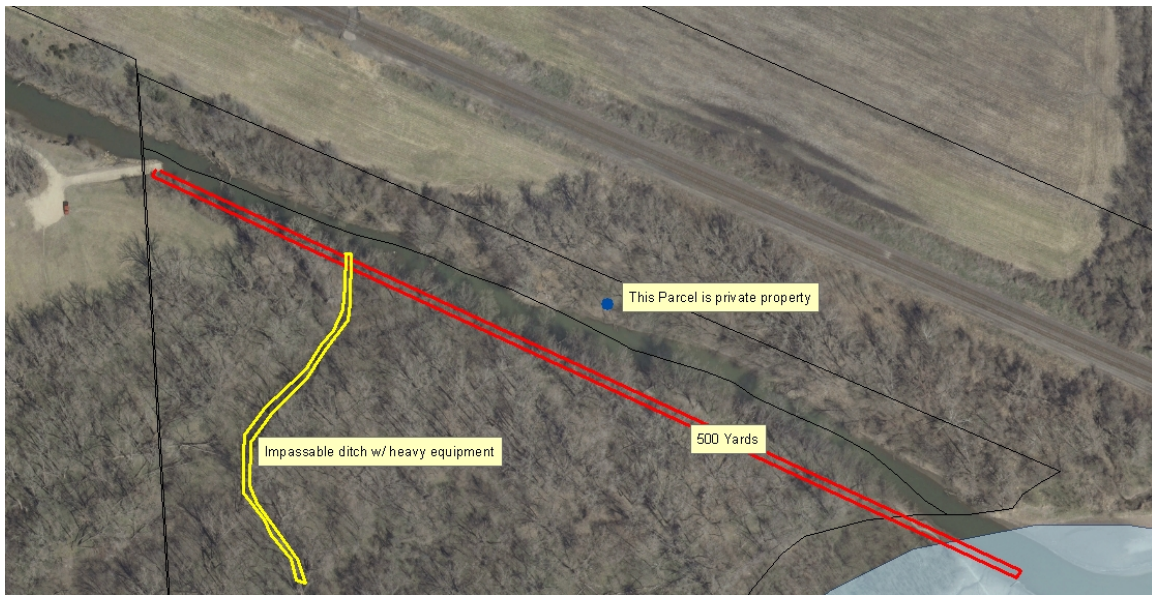
RE: Mud Creek Boat Ramp Closure

With the recent inquiry regarding the Mud Creek Boat Ramp, I wanted to provide you the background of its closure to the public. In 2011, the Mud Creek Boat Ramp, which is located at the northeast end of Riverfront Park in Leavenworth County and provides access to the channel of the Kansas River, was found by staff to be unstable a majority of the time and only marginally accessible approximately one month out of the year during heavy spring rains.

In 2008, we had contracted RD Johnson to provide rip rap along the ramp to prevent further erosion, however by 2011 the rip rap had been washed away. Numerous trees had either fallen into the creek and/or volunteer trees had grown in the area of the low-level water, preventing safe passage through the channel to the river. It had also created a safety concern because the earth below the ramp was deteriorating, undercutting the ramp. With the assistance of the Fire Department, we were able to trim a few of the trees to clear a way down the creek to the main river channel.

By 2016, more trees had fallen and the banks on the opposite side of the creek, which is private property, had also eroded and slid into the water. This narrowed the creek even further, preventing access to the channel. The fallen trees were found to be inaccessible from the banks and would require trees to be cut at the shoreline in hopes they would flow out to the river channel once cut down. This wasn't completed because of the limited access to the area. Plus, the amount of manpower and resources it would take to get into the area to remove trees from the channel far outweighed the usage of the approximate one month it could be accessed throughout the year when water levels were sufficient to get a boat through the channel. Because of the safety concerns by the deteriorating conditions, the limited access due to low-water levels and the minimal number of users, it was decided to close the boat ramp for public use. In January 2017, we issued letters to approximately 250 individuals who had been issued keys to the Mud Creek area, informing them of the ramp's closure effective Feb. 1, 2017. Boulders were placed at the top of the ramp for safety and prevent vehicle access and use of the ramp.

Below are pictures of the boat ramp in 2016 and a map showing the location of the ramp. Also attached the letter sent in January 2017 to those who were issued keys to access the boat ramp, informing them of the ramp's closure.





THOMAS M. MARKUS  
CITY MANAGER

# City of Lawrence

## PARKS AND RECREATION

City Offices  
PO Box 708 66044-0708  
[www.lawrenceks.org](http://www.lawrenceks.org)

6 East 6<sup>th</sup> St  
785-832-3000  
FAX 785-832-3405

### CITY COMMISSION

MAYOR  
MIKE AMYX

COMMISSIONERS  
LESLIE SODEN  
STUART BOLEY  
MATTHEW J. HERBERT  
LISA LARSEN

January 4, 2017

Dear Mud Creek Park Patron:

According to our records, you have checked out a key to the Mud Creek boat ramp in Lawrence Riverfront Park. Due to conditions in the area of the boat ramp, as of February 1st of 2017, the boat ramp itself will be closed. Boulders will be placed at the top of the ramp to prevent vehicular use of the ramp.

The primary intended use of this area has been to provide fishing and boating access to the Mud Creek and the Kansas River. However, due to fallen trees and deterioration of the creek banks leading to the river, this channel is seldom passable by boat. Those individuals wishing to have boating access to the River are encouraged to use the boat ramps at 8<sup>th</sup> and Oak Street.

As in the past, your key will allow access to the lower parking lot for patrons wishing to fish from the bank of the creek. The use of any ATV's, dirt bikes, discharge of firearms, camping or any other such activity is prohibited. We also ask that you observe city park hours, which are 6:00 A.M. to 11:30 P.M.

Please note that this plan is contingent upon the continued cooperation of park users and is subject to change, should the need arise.

Thank you for your cooperation.

Sincerely,

Rowan Green, Park District Manager  
Lawrence Parks and Recreation Department  
785-832-3450

cc: Ernie Shaw Interim Director

