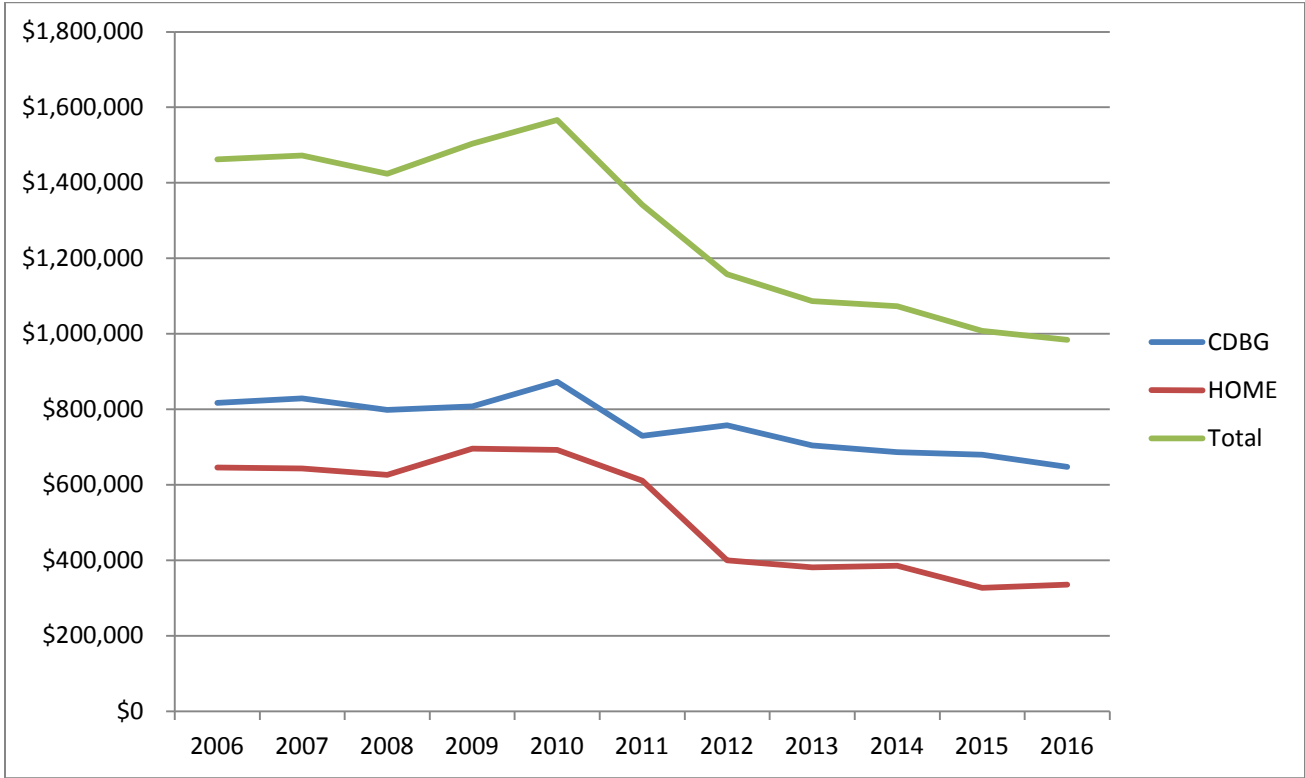


CDBG/HOME Funding Trends



	CDBG	HOME	Total
2006	\$816,981	\$645,694	\$1,462,675
2007	\$828,822	\$643,923	\$1,472,745
2008	\$798,320	\$626,133	\$1,424,453
2009	\$807,774	\$695,905	\$1,503,679
2010	\$873,534	\$692,784	\$1,566,318
2011	\$730,325	\$611,565	\$1,341,890
2012	\$758,284	\$399,876	\$1,158,160
2013	\$704,879	\$381,923	\$1,086,802
2014	\$687,069	\$386,148	\$1,073,217
2015	\$680,090	\$327,666	\$1,007,756
2016	\$647,738	\$336,152	\$983,890