

SNOW REMOVAL & ICE CONTROL PREPAREDNESS

Executive Summary

11/15/2016



City of Lawrence
PUBLIC WORKS

Presented by

Mark Thiel

Assistant Director of Public Works

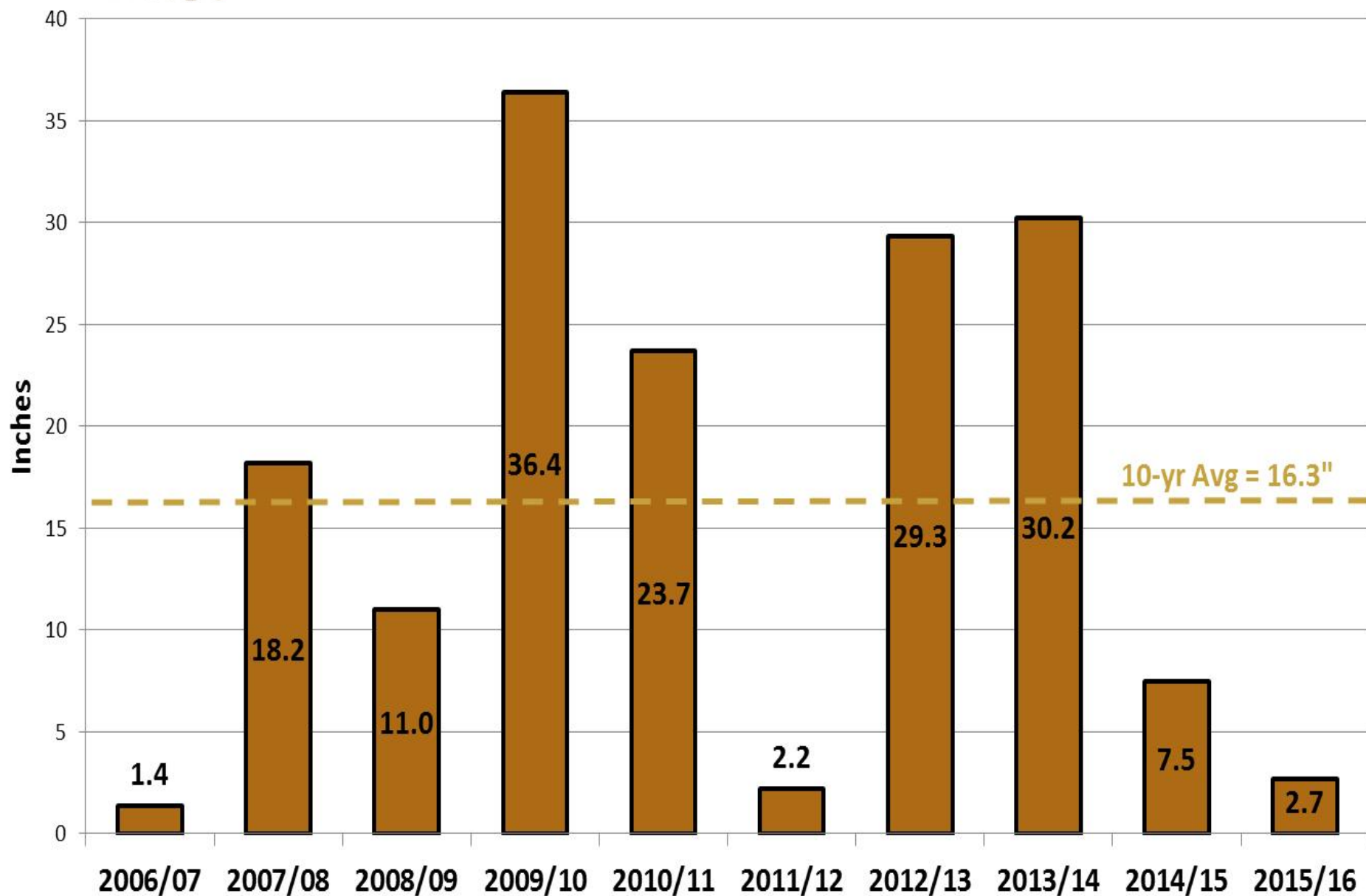
Typical Numbers For Lawrence

- Average Snowfall per year = 21"
- Average number of snow events = 7
- Record monthly snowfall = 21.9" in January 1985
- Record single event = March 23rd 1912 – 20"
- Typical snow months December thru March

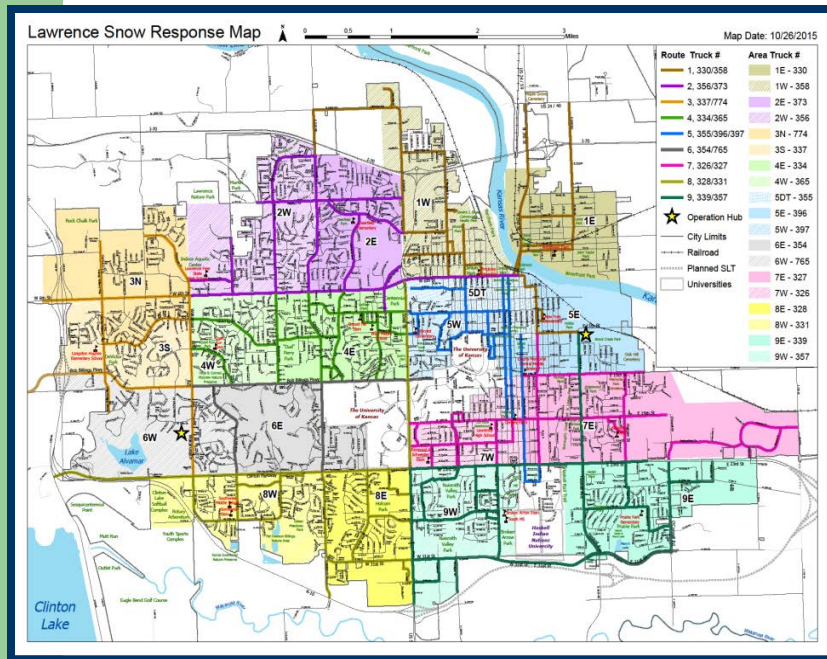


Comparative Snowfall (Past 10 Years)

from Downtown Lawrence



A photograph of a snowy landscape. In the foreground, the words "Good Day" are written in large, faint, light-colored letters in the snow. The background shows a line of bare trees and a small building, possibly a house or shed, under a pale sky. The entire image is framed by a thick blue border.



Plan

Pretreatment

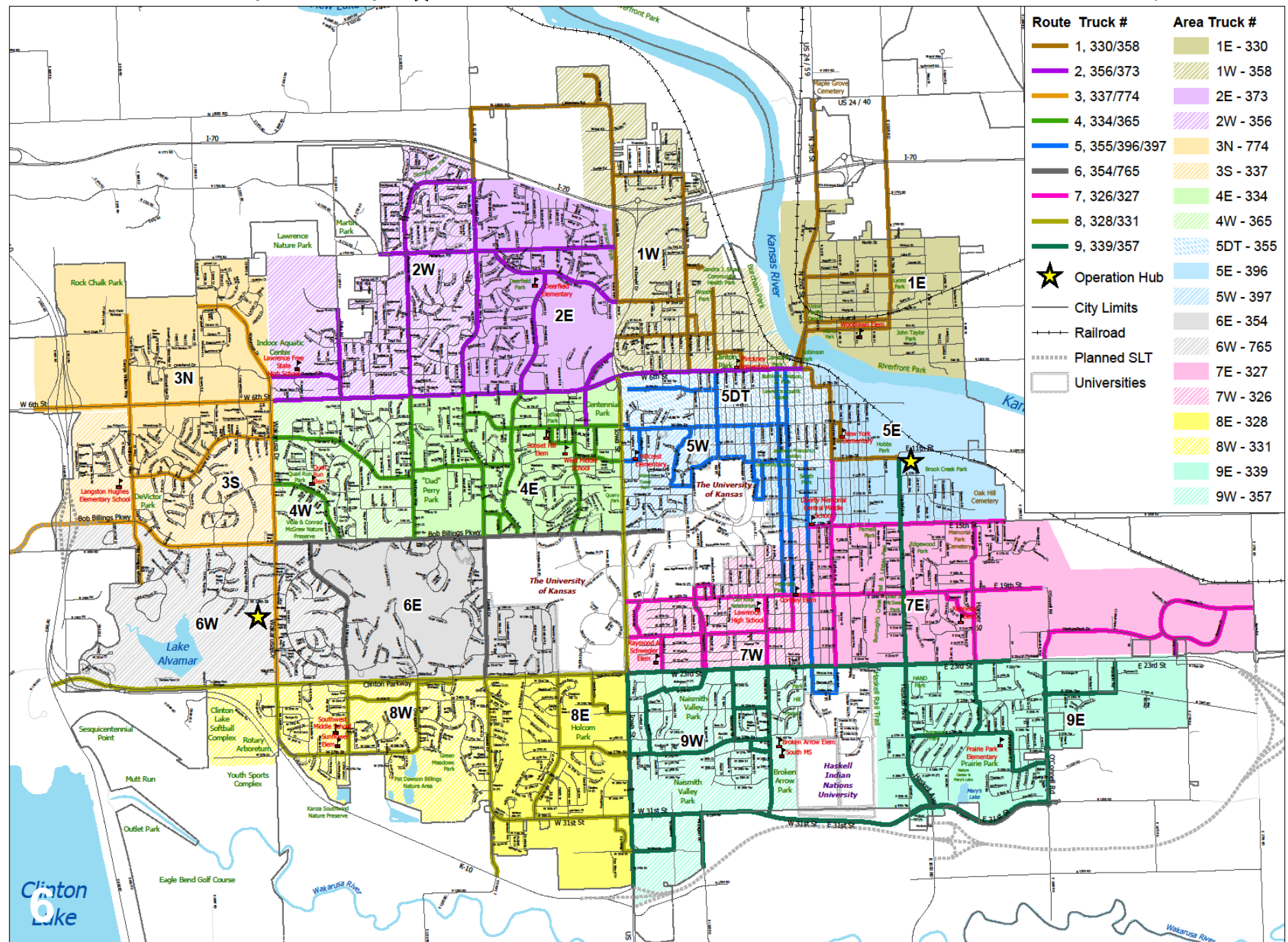
Annual Snow Training Day

The First Tuesday In November Each Year

- The annual practice provides an opportunity to review the plan, incorporate new streets, give equipment one more check and train employees



Map Date: 10/26/2015





Resources

- ❄ Material
- ❄ Equipment
- ❄ Labor



Equipment

- 7 - Tandem axle dump trucks
- 5 - Single axle dump trucks
- 7 – Flatbed 4x4 trucks
- 1 – Wheel loader
- 2 – Motor graders
- 3 – Back-hoe
- 2 – Farm tractors
- 2 – Liquid tank spreader
- 5 - Wing blades
- 2 – 1 Ton 4X4 pickup trucks



Personnel

- **Public Works**
- **Other Dept's**
- **Contracted**



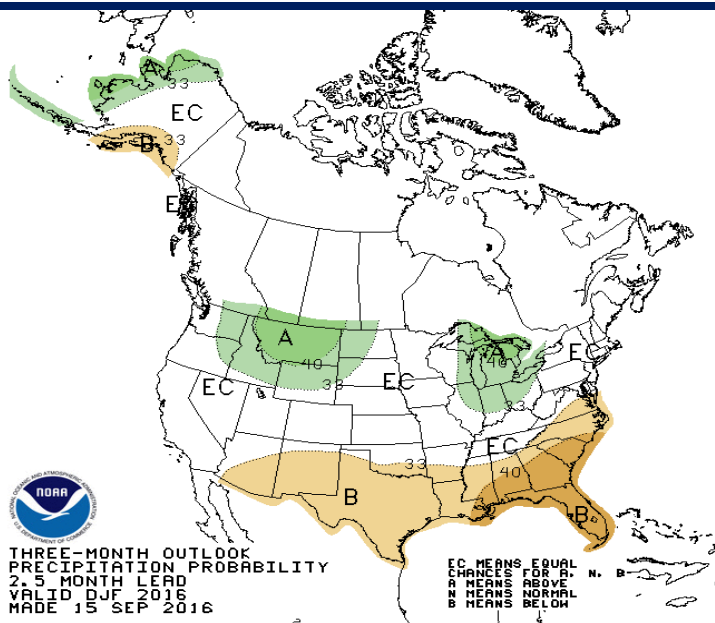
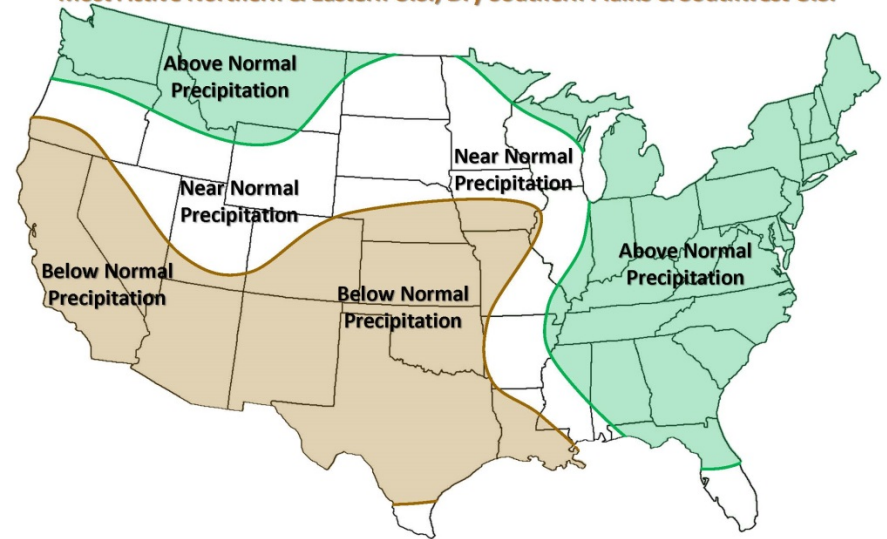
Budget Impact

- No dedicated / specific snow operation budget
- Depends on severity of winter
- Costs are absorbed within existing Street Division Budgets
- Large expenditures could impact street maintenance later in the year

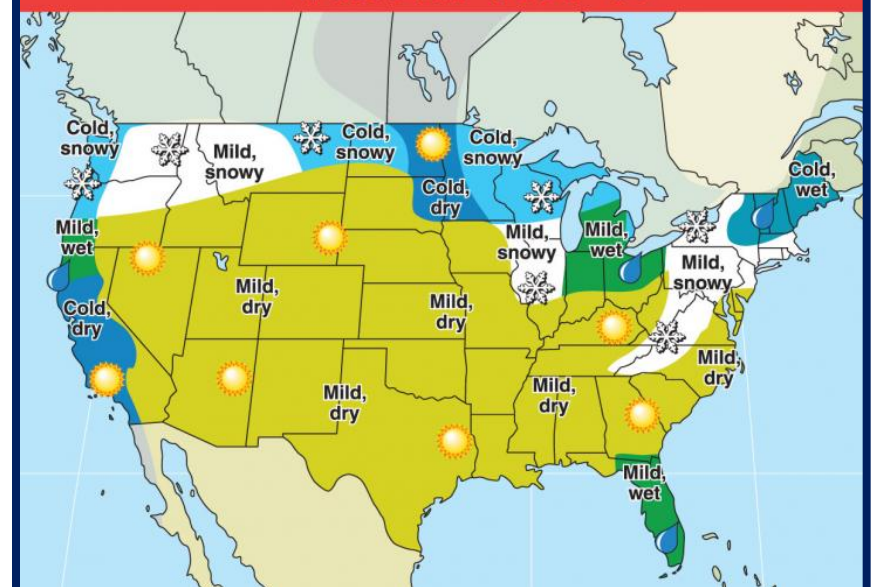
Forecasts

- ❄ NOAA Forecast
- ❄ Farmers Almanac
- ❄ Weather or not

November – March Precipitation Forecast
Most Active Northern & Eastern U.S.; Dry Southern Plains & Southwest U.S.



WINTER 2016-17



A scene from the Disney movie Frozen showing Olaf, the snowman, relaxing on a sandy beach. He is wearing sunglasses and is positioned under a red and white striped beach umbrella. A green and white beach ball is on the sand to his left. In the background, there is a blue ocean with a small sailboat and a bright sun in a blue sky with some clouds.

Questions?