

LAWRENCE - DOUGLAS COUNTY FIRE MEDICAL - STATION No. 1 REMODEL - SITE PLAN

746 KENTUCKY STREET, LAWRENCE KS 66044

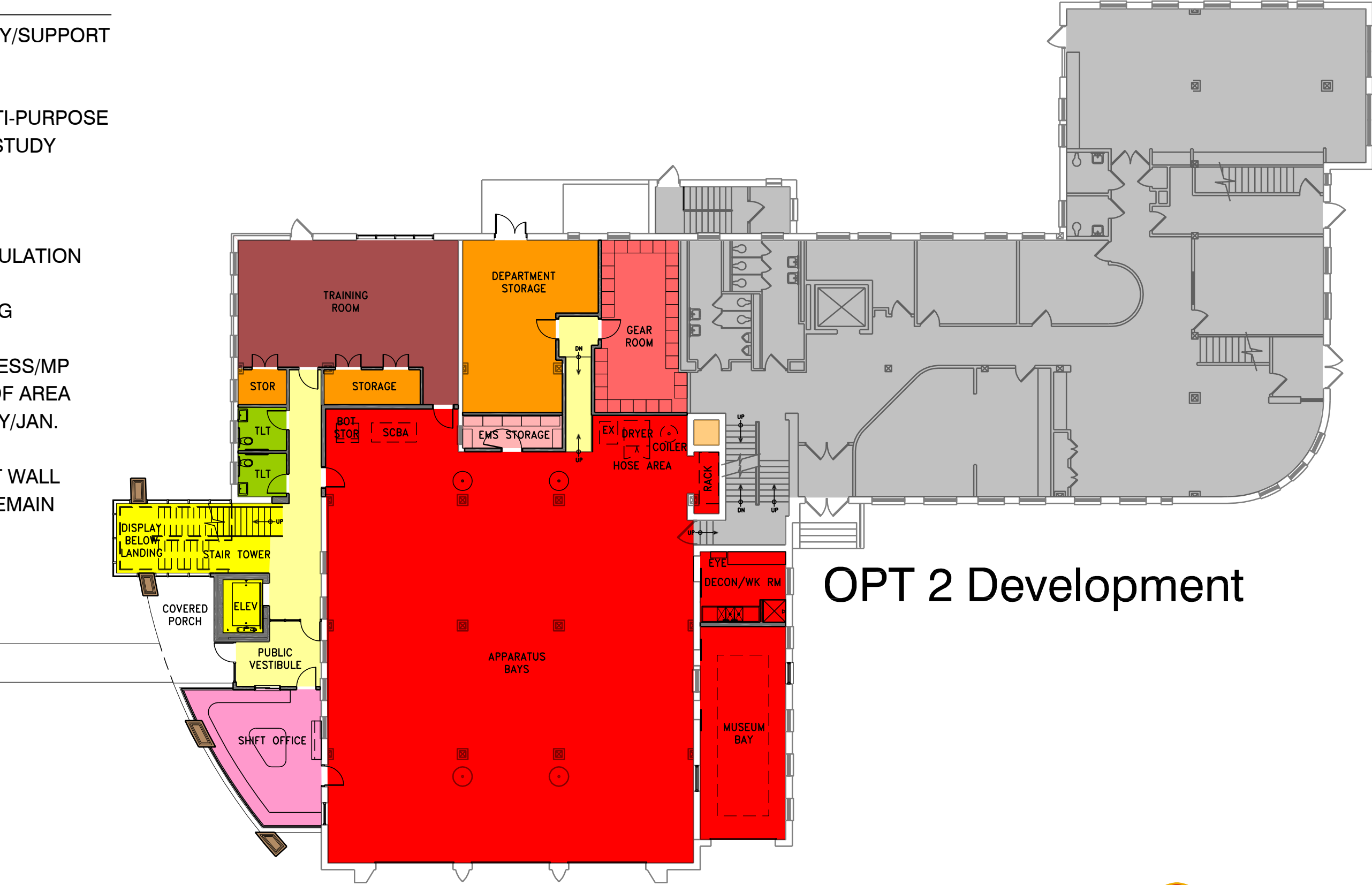


Zimmerschied
ARCHITECTURE

SCALE = 1/8" = 1'-0"
MAY 31, 2016

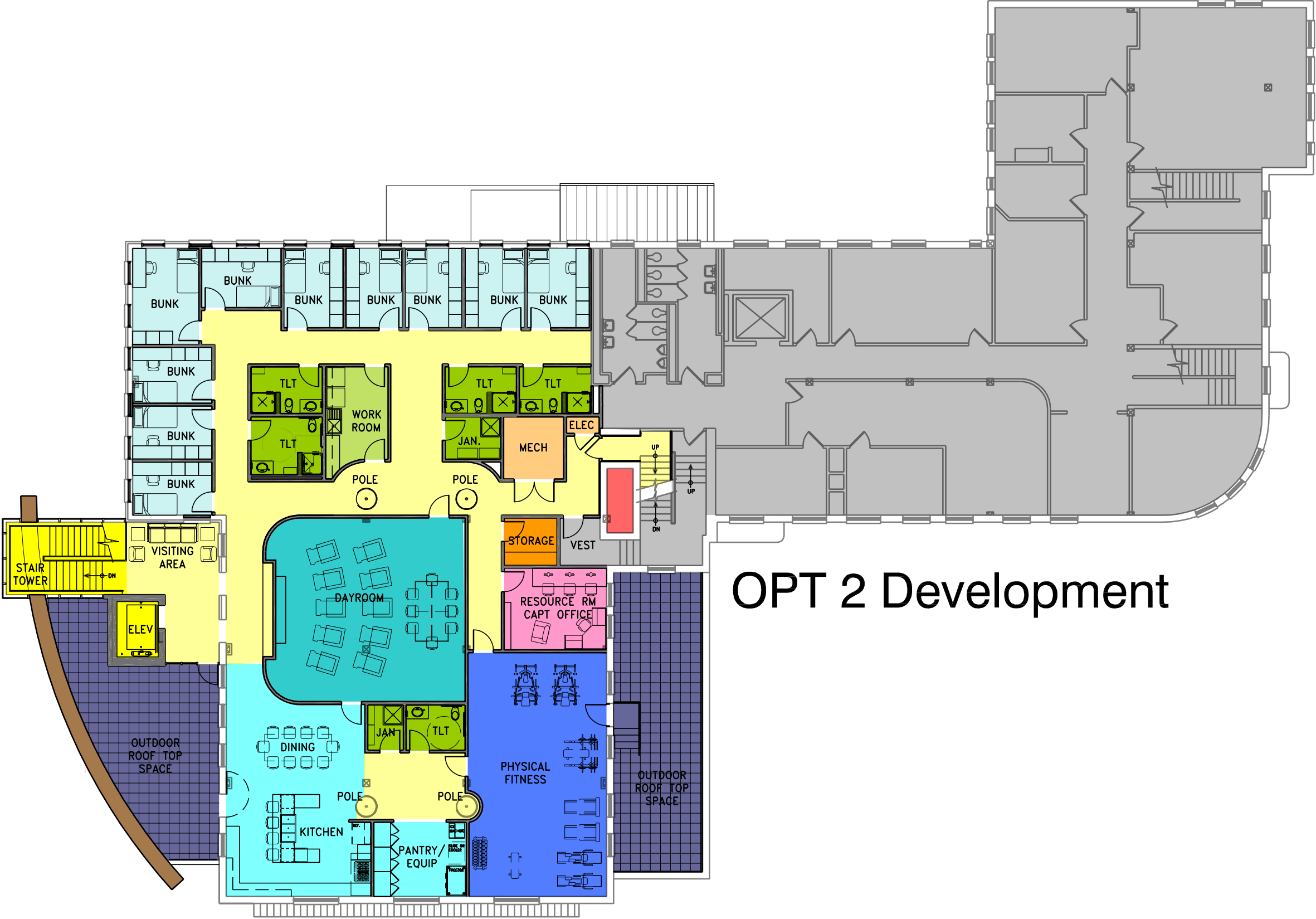
LEGEND

- APPARATUS BAY/SUPPORT
- GEAR ROOM
- EMS STORAGE
- TRAINING/MULTI-PURPOSE
- SHIFT OFFICE/STUDY
- RESTROOMS
- STORAGE
- CIRCULATION
- VERTICAL CIRCULATION
- DAYROOM
- KITCHEN/DINING
- BUNK ROOMS
- PHYSICAL FITNESS/MP
- OUTDOOR ROOF AREA
- WORK/LAUNDRY/JAN.
- MECHANICAL
- ENTRY ACCENT WALL
- EXISTING TO REMAIN



LEGEND

- APPARATUS BAY/SUPPORT
- GEAR ROOM
- EMS STORAGE
- TRAINING/MULTI-PURPOSE
- SHIFT OFFICE/STUDY
- RESTROOMS
- STORAGE
- CIRCULATION
- VERTICAL CIRCULATION
- DAYROOM
- KITCHEN/DINING
- BUNK ROOMS
- PHYSICAL FITNESS
- OUTDOOR ROOF AREA
- WORK/LAUNDRY/JAN.
- MECHANICAL
- ENTRY ACCENT WALL
- EXISTING TO REMAIN



OPT 2 Development

LAWRENCE - DOUGLAS COUNTY FIRE MEDICAL - STATION No. 1 REMODEL - 2nd FLOOR

746 KENTUCKY STREET, LAWRENCE KS 66044



Zimmerschied ARCHITECTURE

SCALE = 1/16" = 1'-0"

May 31, 2016

