



Lawrence Douglas County Fire & Medical Station No. 1 Deferred Maintenance and Remodel Project

October 18, 2016



Existing Facility Information



Existing Facility



■ Facility History

- Construction Complete 1950 - Mid-Century Modern Structure
- Originally Constructed as Public Safety Center
- Interior Remodels in 1979 & 1984
- Building is on the National Register of Historic Places
- Reorganization of LDFM & DCSS Spaces Req'd



City of Lawrence

Functional Deficiencies



City of Lawrence

Program/Needs - Architecture

- Fire Department Program Improvements
 - Existing Square Foot Deficiency vs. New Station Design
 - Continuity of Station Spaces
 - Improved Response Times
 - Create Operational Efficiencies
 - Limit Public Access to Station Areas
 - Improved Security – Station Office Relocation
 - Single Room vs. Bunkroom Sleeping
 - Existing Dayroom & Kitchen Spaces are Undersized
 - Aging Restrooms & Infrastructure



Deferred Maintenance



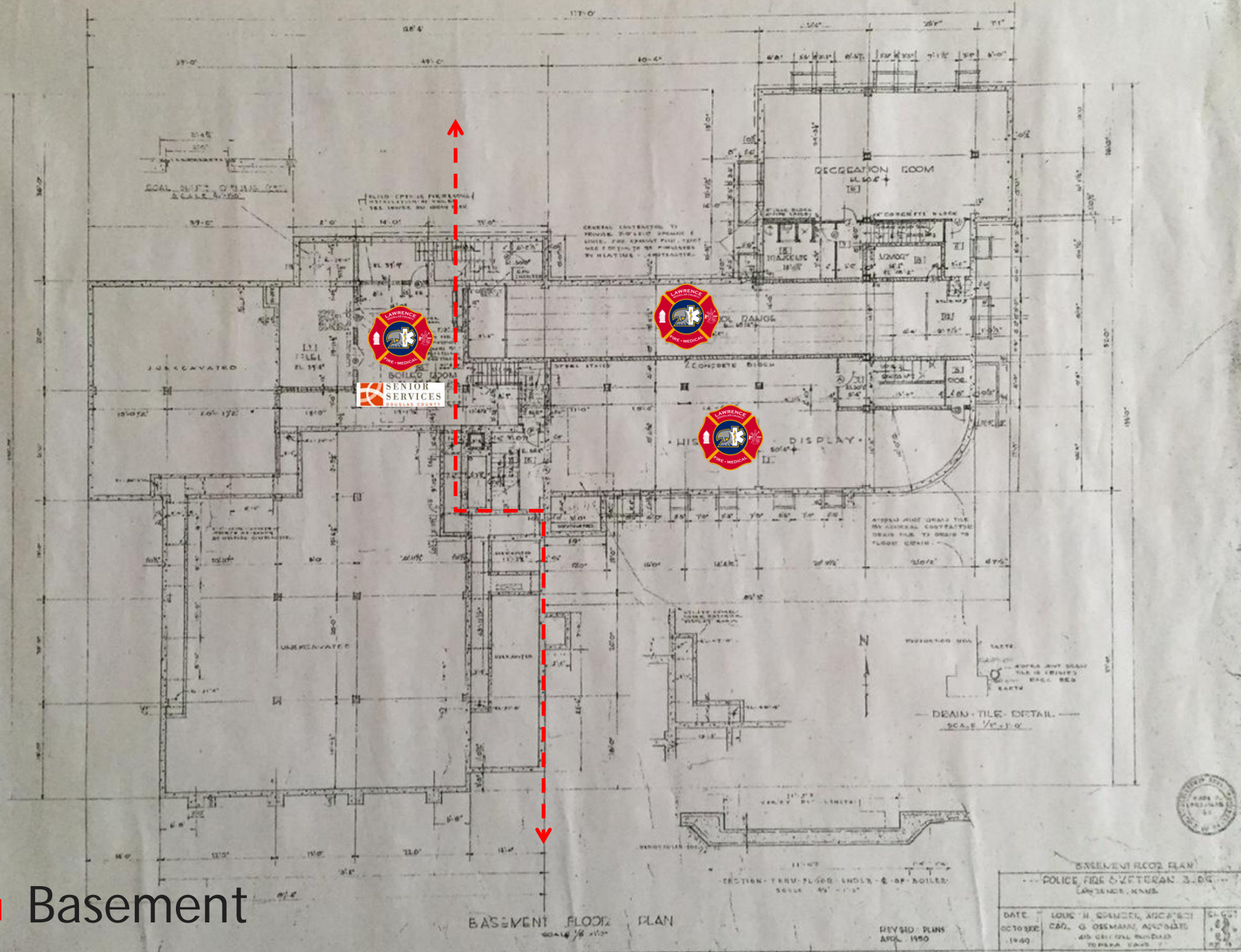
Program/Needs - MEP

■ Fire Department MEP Improvements

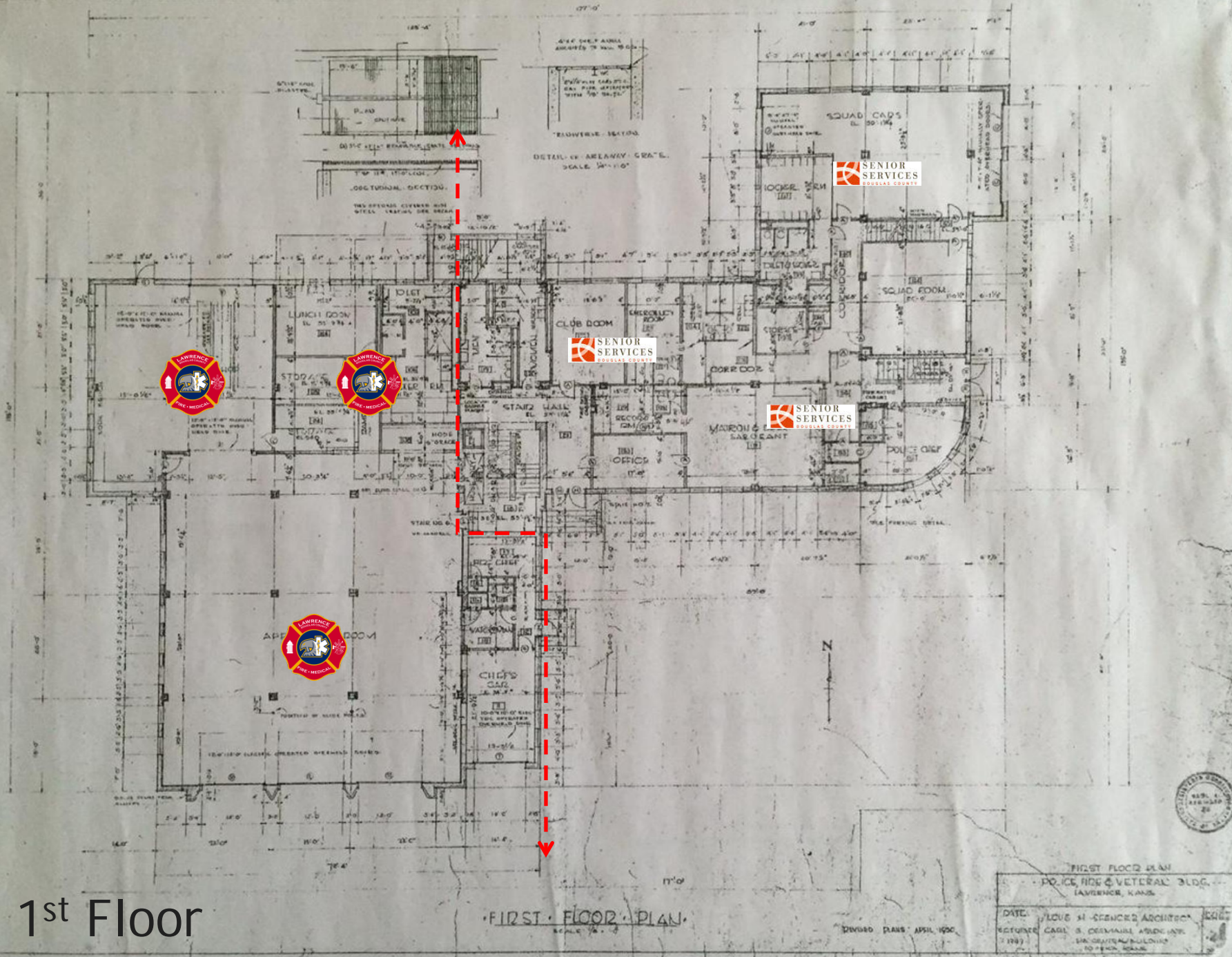
- Entire Bldg vs. Pieces
- Zoning & Control of HVAC Systems
- Energy Efficiency
 - HVAC, Plumbing, Electrical/Lighting
- Bldg Service Improvements
 - Emergency Power, Security, Etc.



Basement



1st Floor



FIRST FLOOR PLAN		
POLICE AND VETERAN BLDG.		
LAWRENCE, KANS.		
DATE	LOVE H. SPENCER ARCHT.	1937
RETURNED	CARL S. DEHAUW ARCHT.	1937
	100 CENTRAL BUILDING	
	100 MAIN, KANS.	



■ 2nd Floor

SECOND FLOOR PLAN

REVISED APRIL 1980

SECOND FLOOR PLAN
POLICE FIRE & VETERANS BLDG.
LAWRENCE, MASS.

DATE: 1984
DESIGNED BY: LOUIS H. SPANGLER, ARCHITECT
DRAWN BY: CAROL S. SPANGLER, ASSOCIATE
CHECKED BY: JIM GIBSON, BUILDING
SUPERVISOR



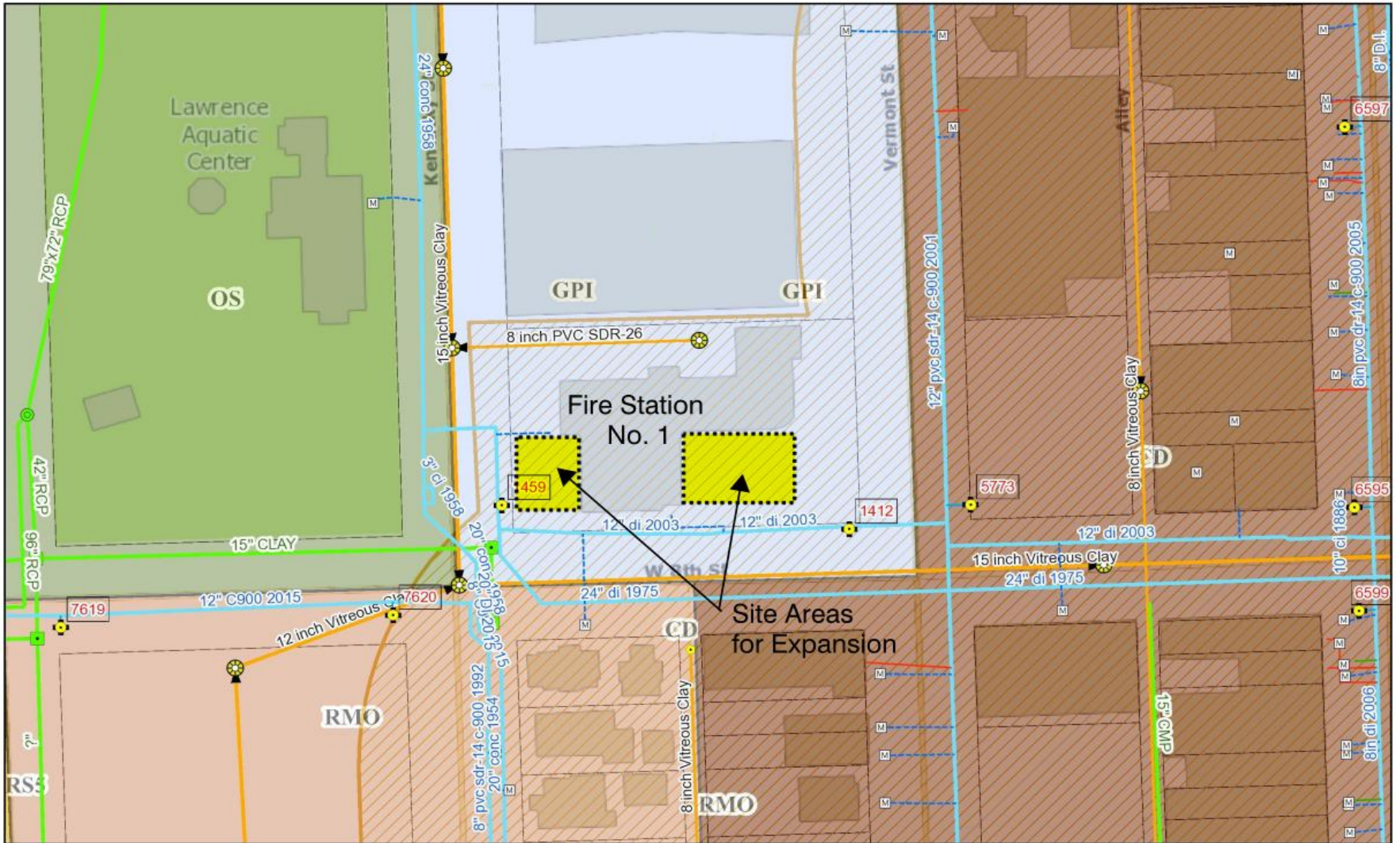
5



Proposed Fire & Medical Facility Modifications



LDCFM1_Site




January 21, 2016

wStructure

WTP TreatmentPlant

 EnclosedStorageFacility

 StorageBasin

 wMeter

wHydrant

 Central Se

wLateralLine

--- Commercial

Don

— Fire

HydrantLaterals

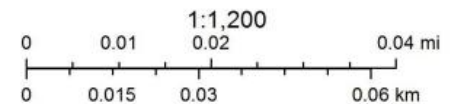
— Industrial

Irrigation

wPressurizedMain

Central Service

— West Hills

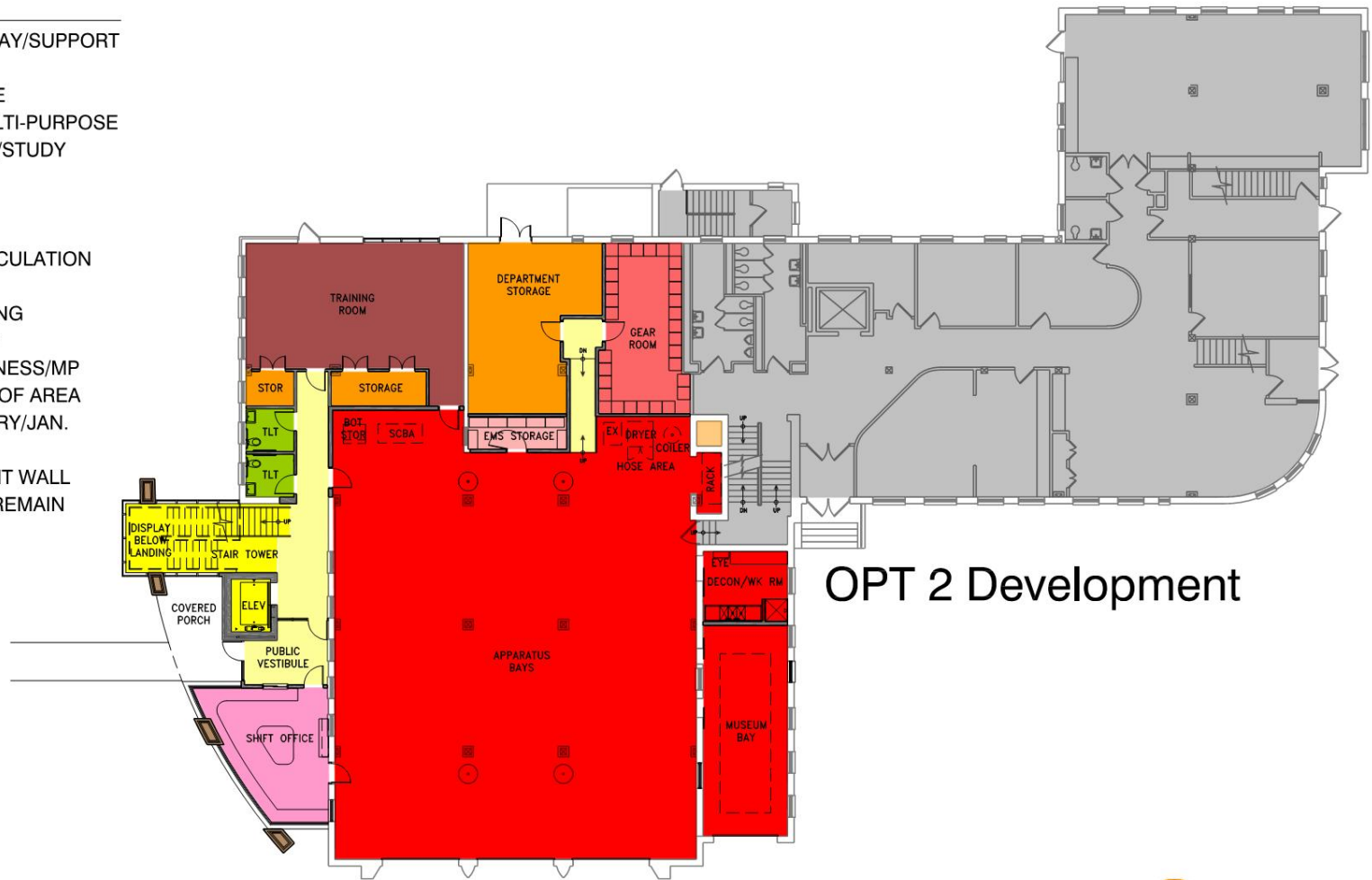


City of Lawrence, Kansas Utilities Department
City of Lawrence GIS staff, Douglas County GIS staff



LEGEND

- APPARATUS BAY/SUPPORT
- GEAR ROOM
- EMS STORAGE
- TRAINING/MULTI-PURPOSE
- SHIFT OFFICE/STUDY
- RESTROOMS
- STORAGE
- CIRCULATION
- VERTICAL CIRCULATION
- DAYROOM
- KITCHEN/DINING
- BUNK ROOMS
- PHYSICAL FITNESS/MP
- OUTDOOR ROOF AREA
- WORK/LAUNDRY/JAN.
- MECHANICAL
- ENTRY ACCENT WALL
- EXISTING TO REMAIN



OPT 2 Development



Zimmerschied 
ARCHITECTURE
SCALE = 1/16" = 1'-0"
May 31, 2016

LAWRENCE - DOUGLAS COUNTY FIRE MEDICAL - STATION No. 1 REMODEL - MAIN

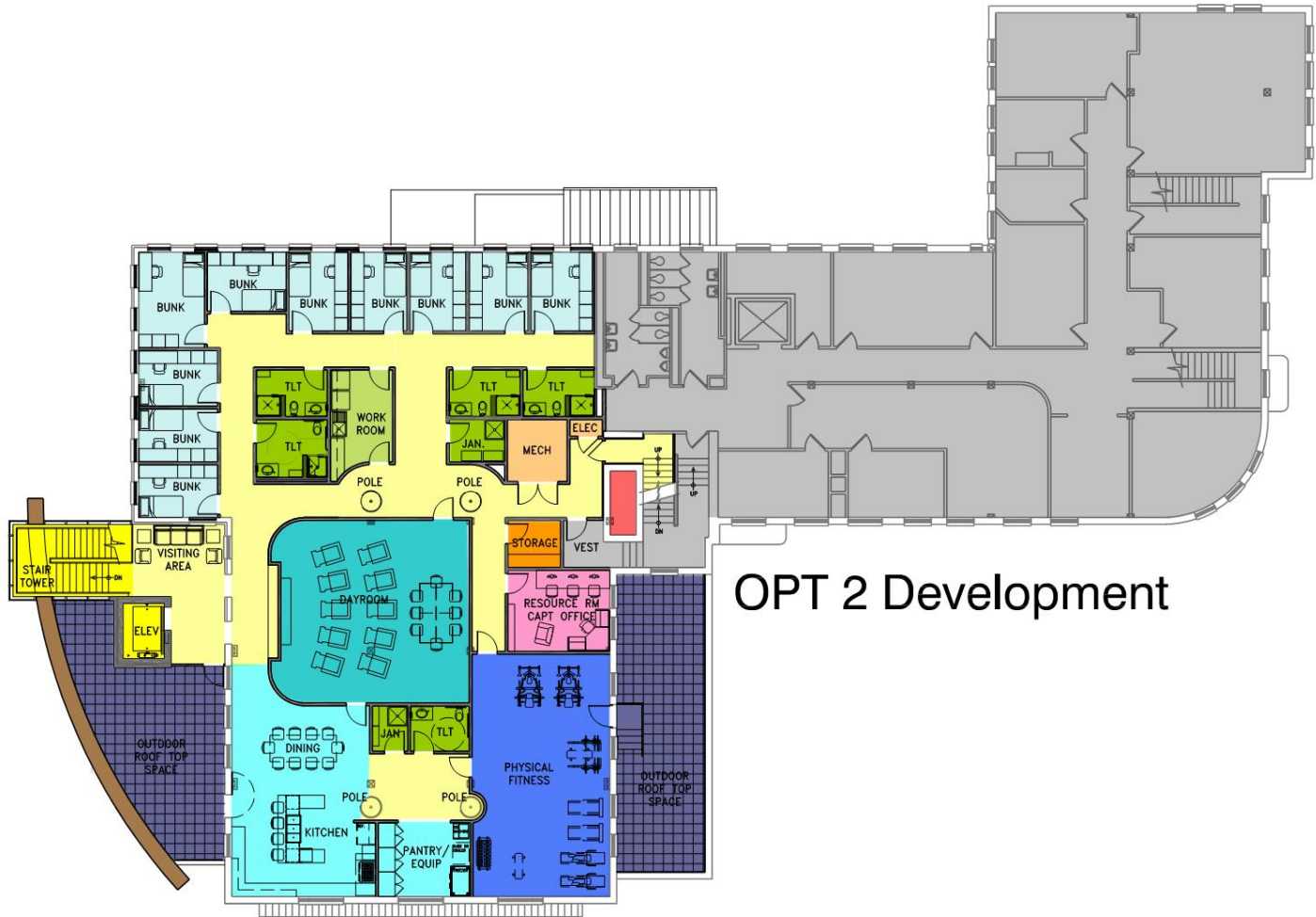
746 KENTUCKY STREET, LAWRENCE KS 66044



City of Lawrence

LEGEND

- APPARATUS BAY/SUPPORT
- GEAR ROOM
- EMS STORAGE
- TRAINING/MULTI-PURPOSE
- SHIFT OFFICE/STUDY
- RESTROOMS
- STORAGE
- CIRCULATION
- VERTICAL CIRCULATION
- DAYROOM
- KITCHEN/DINING
- BUNK ROOMS
- PHYSICAL FITNESS
- OUTDOOR ROOF AREA
- WORK/LAUNDRY/JAN.
- MECHANICAL
- ENTRY ACCENT WALL
- EXISTING TO REMAIN



OPT 2 Development

LAWRENCE - DOUGLAS COUNTY FIRE MEDICAL - STATION No. 1 REMODEL - 2nd FLOOR

746 KENTUCKY STREET, LAWRENCE KS 66044



Zimmerschied 
ARCHITECTURE
SCALE = 1/16" = 1'-0"
May 31, 2016



City of Lawrence



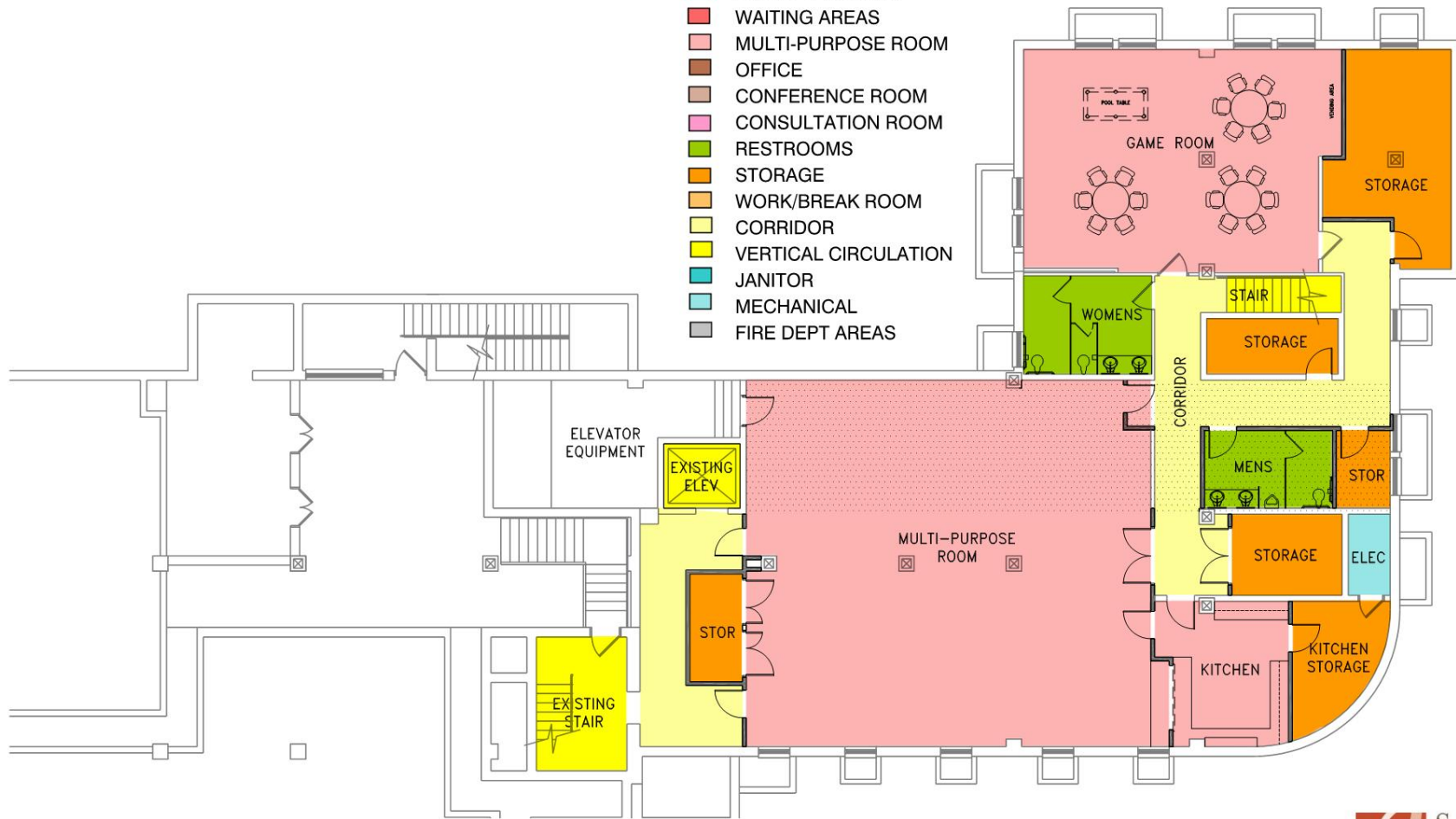
Proposed Douglas County Senior Services - Facility Modifications



City of Lawrence

LEGEND

- ENTRY VESTIBULE
- WAITING AREAS
- MULTI-PURPOSE ROOM
- OFFICE
- CONFERENCE ROOM
- CONSULTATION ROOM
- RESTROOMS
- STORAGE
- WORK/BREAK ROOM
- CORRIDOR
- VERTICAL CIRCULATION
- JANITOR
- MECHANICAL
- FIRE DEPT AREAS



DOUGLAS COUNTY SENIOR SERVICES - LOWER LEVEL

745 VERMONT STREET, LAWRENCE KS 66044



LEGEND

- ENTRY VESTIBULE
- WAITING AREAS
- MULTI-PURPOSE ROOM
- OFFICE
- CONFERENCE ROOM
- CONSULTATION ROOM
- RESTROOMS
- STORAGE
- WORK/BREAK ROOM
- CORRIDOR
- VERTICAL CIRCULATION
- JANITOR
- MECHANICAL
- FIRE DEPT AREAS



DOUGLAS COUNTY SENIOR SERVICES - MAIN LEVEL

745 VERMONT STREET, LAWRENCE KS 66044



City of Lawrence

LEGEND

- ENTRY VESTIBULE
- WAITING AREAS
- MULTI-PURPOSE ROOM
- OFFICE
- CONFERENCE ROOM
- CONSULTATION ROOM
- RESTROOMS
- STORAGE
- WORK/BREAK ROOM
- CORRIDOR
- VERTICAL CIRCULATION
- JANITOR
- MECHANICAL
- FIRE DEPT AREAS



DOUGLAS COUNTY SENIOR SERVICES - PROPOSED 2nd LEVEL

745 VERMONT STREET, LAWRENCE KS 66044



SCALE = 3/32" = 1'-0"
JULY 31, 2016



City of Lawrence

Estimate of Probable Costs

LDCFM-Station 1 Remodel + Addition:

- Project Costs: \$3,857,978.00

DCSS Renovation:

- Construction Value: \$2,156,674.00
- Project Costs: \$2,520,176.00

Project Totals: LDCFM Station1 + DCSS

- Construction Value: \$5,341,198.00
- Total Project Costs: \$6,378,154.00

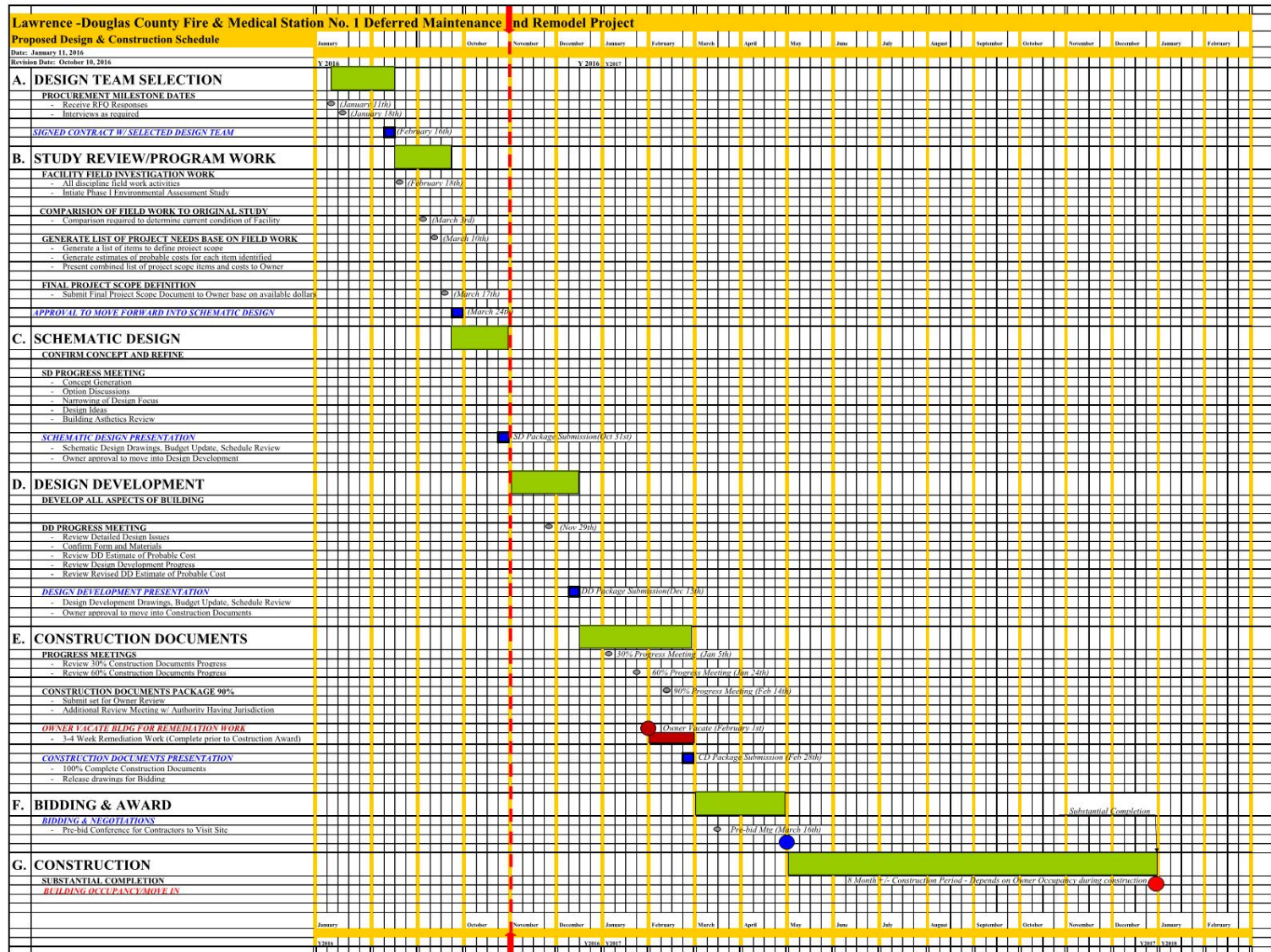




Design/Construction Schedule



City of Lawrence





Question & Answer

October 18, 2016



City of Lawrence